

WELL LOCATION CERTIFICATE: COOK 37N-W3HZ

SECTION 10, TOWNSHIP 2 NORTH, RANGE 65 WEST, 6TH P.M.

NOTES:

BH LOCATION PROVIDED BY CLIENT.
LAND SURFACE USE-IRRIGATION CROP
EXISTING FOOTAGES
SEE ATTACHED MAP FOR ADDITIONAL
IMPROVEMENTS WITHIN 400'.

PDOP=1.5

GPS OPERATOR:OWEN McKEE

SURFACE LOCATION

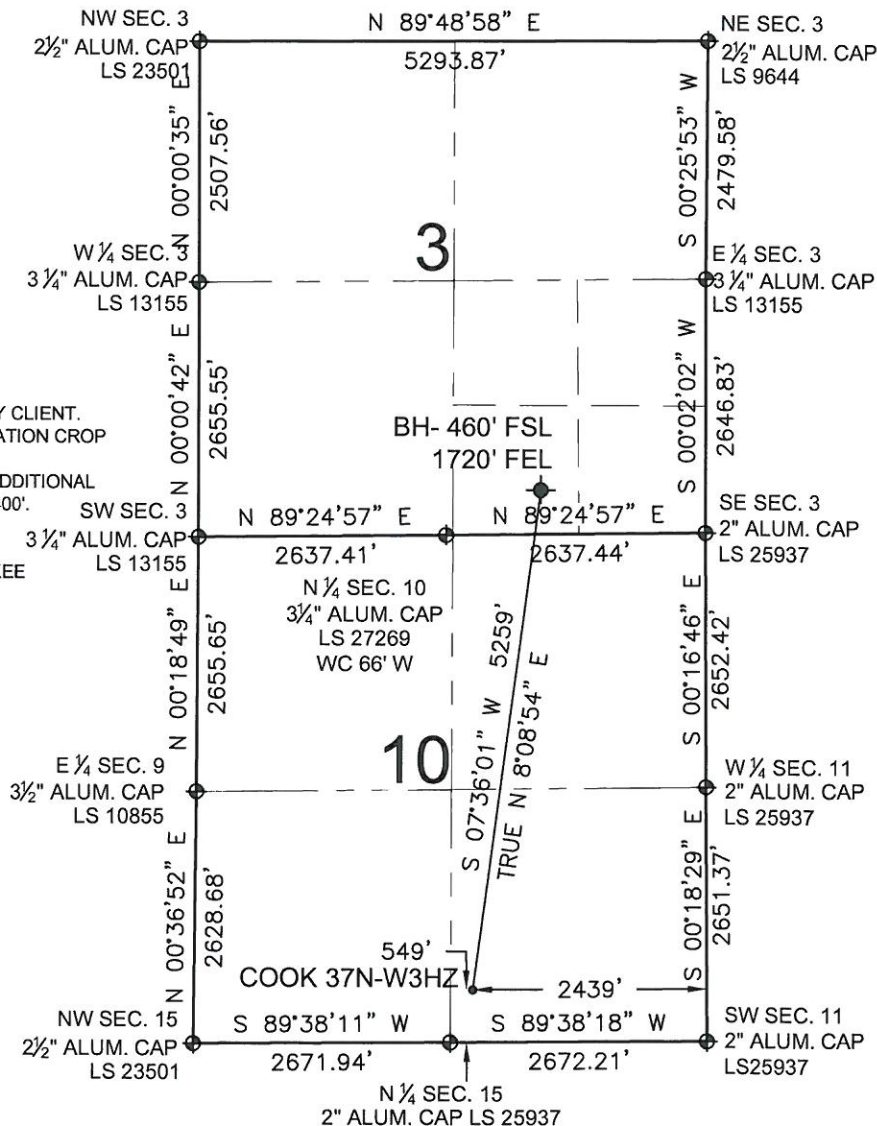
GROUND ELEVATION= 4869'
NAD83
LATITUDE= 40.147467°
LONGITUDE= 104.649253°

LATITUDE= 40°08'50.882"
LONGITUDE= 104°38'57.311"

BOTTOM HOLE LOCATION

NAD83
LATITUDE= 40.161758°
LONGITUDE= 104.646586°

LATITUDE= 40°09'42.327"
LONGITUDE= 104°38'47.708"



LEGEND

- ⊙ = EXISTING MONUMENT ⊙ = BOTTOM HOLE BH = BOTTOM HOLE
● = PROPOSED WELL ◆ = EXISTING WELL

WELL COOK 37N-W3HZ TO BE LOCATED 549' FSL AND 2439' FEL

NOTES:

1. THIS FIELD SURVEY CONFORMS TO THE MINIMUM STANDARDS SET BY THE C.O.G.C.C., RULE NO. 215
2. HORIZONTAL POSITIONS AND ORTHOMETRIC ELEVATIONS SHOWN AT THE WELL HEAD, ARE BASED ON GPS-RTK POSITIONS DERIVED FROM MINIMUM 2-HOUR STATIC OBSERVATIONS CORRECTED BY THE NATIONAL GEODETIC SURVEY ONLINE POSITIONING USER SERVICE, O.P.U.S. DATUM: HORIZONTAL = NAD83/2007, VERTICAL = NAVD88
3. THE BASIS OF BEARINGS ARE STATE PLANE COORDINATE SYSTEM GRID BEARINGS SHOWN HEREON BETWEEN THE DESCRIBED THE MONUMENTS SHOWN HEREON.
4. GRID DISTANCES ARE SHOWN, AS MEASURED IN THE FIELD, WITH TIES TO WELLS MEASURED PERPENDICULAR TO SECTION LINES.

I, L. KELLEY STEVENSON, A LICENSED PROFESSIONAL LAND SURVEYOR IN THE STATE OF COLORADO DO HEREBY CERTIFY TO **KERR-MCGEE OIL & GAS ONSHORE LP**, THAT THE SURVEY AND WELL LOCATION CERTIFICATE SHOWN HEREON WERE DONE BY ME OR UNDER MY DIRECT SUPERVISION AND THAT THE DRAWING SHOWN HEREON ACCURATELY DEPICTS THE PROPOSED LOCATION OF THE WELL. THIS CERTIFICATE DOES NOT REPRESENT A LAND SURVEY PLAT OR IMPROVEMENT SURVEY PLAT AS DEFINED BY C.R.S. 38-51-102 AND CANNOT BE RELIED UPON TO DETERMINE OWNERSHIP.

L. KELLEY STEVENSON, PLS 38231
COLORADO LICENSED PROFESSIONAL LAND SURVEYOR
FOR AND ON BEHALF OF P.F.S., LLC

NOTICE: ACCORDING TO COLORADO LAW YOU MUST COMMENCE ANY LEGAL ACTION BASED UPON ANY DEFECT IN THIS SURVEY WITHIN THREE YEARS AFTER YOU FIRST DISCOVER SUCH DEFECT. IN NO EVENT MAY ANY ACTION BASED UPON ANY DEFECT IN THIS SURVEY BE COMMENCED MORE THAN TEN YEARS FROM THIS SAID DATE OF THIS CERTIFICATION SHOWN HEREON.

PREPARED BY:



FIELD DATE:
11-21-11
DRAWING DATE:
12-07-11
BY:
SDL

SURFACE LOCATION:
SW 1/4 SE 1/4,
SEC.10, T2N, R65W, 6TH P.M.
WELD COUNTY, COLORADO

