



Kerr-McGee Oil & Gas Onshore LP

1099 18th Street, Suite 1800
Denver, CO 80202-1918
P.O. Box 173779
Denver, CO 80217-3779
720-929-6000

March 19, 2012

Department of Natural Resources
Oil and Gas Conservation Commission
The Chancery Building
1120 Lincoln St., Suite 801
Denver, CO 80203

Re: **30 Day Certification Letter - 318A-e**
RAYMOND 16N-29HZ
Township 3 North, Range 66 West, Section 29: NE/4NE/4
Unit Spacing: 03N-66W-29 E/2E/2
Weld County, Colorado

Ladies/Gentlemen:

Kerr-McGee Oil and Gas Onshore LP ("KMG") hereby certifies to the Director that a thirty (30) day notice has been given by certified mail to all owners in the proposed wellbore spacing unit. We have not received any objections to such well location, proposed spacing unit, or additional producing formation. KMG hereby requests the Director to approve the boundary well.

If you have any questions or issues regarding this permit, please contact Cheryl Light at (720) 929-6461.

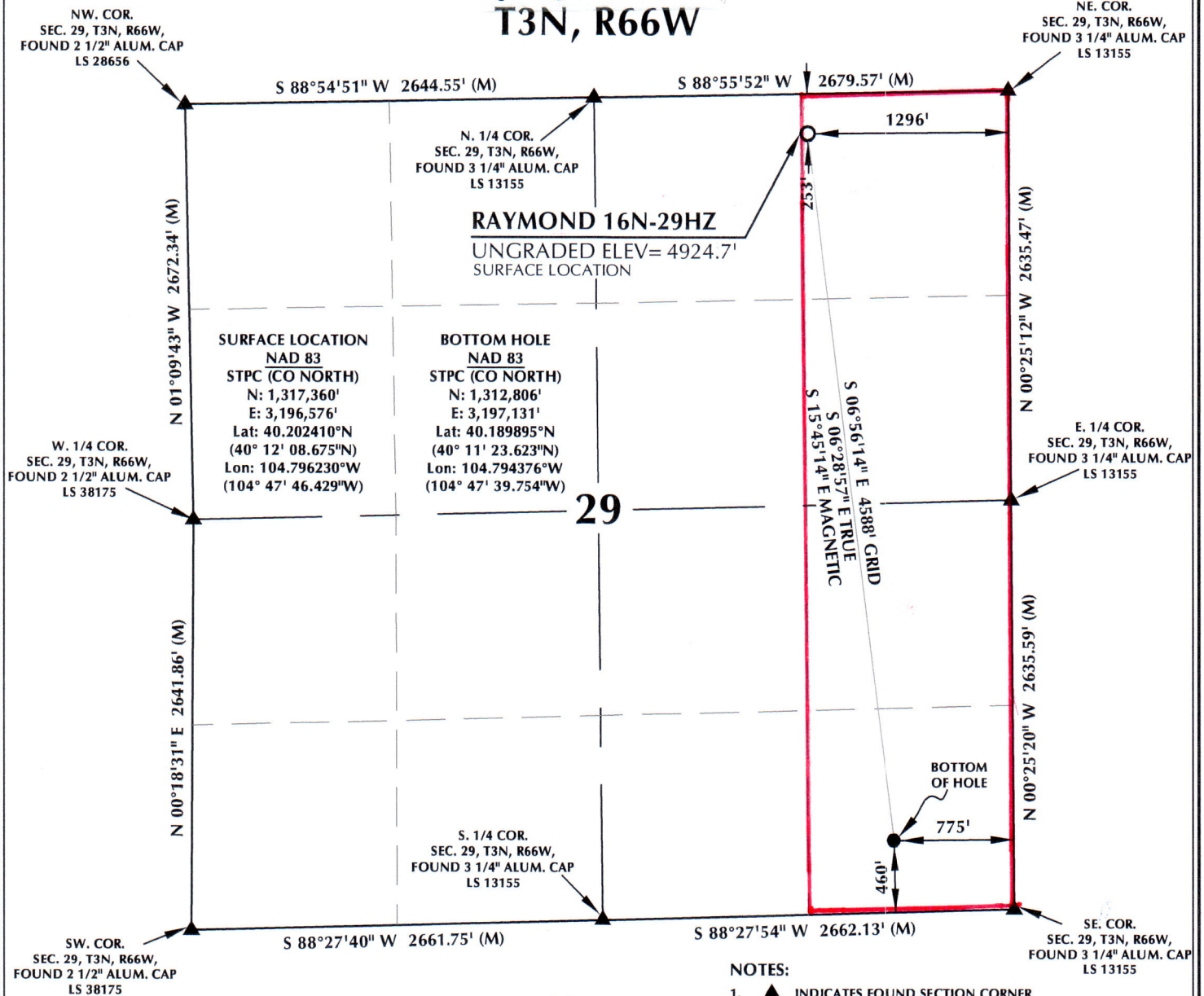
Very truly yours,

Kerr-McGee Oil and Gas Onshore LP

A handwritten signature in blue ink, appearing to read 'Rebecca Heim'.

Rebecca Heim
Regulatory Analyst II

318A Proposed Spacing Unit Plan T3N, R66W



NOTES:

- ▲ INDICATES FOUND SECTION CORNER
- INDICATES CALCULATED CORNER
- ELEVATION BASED ON NAVD88 (GEOID09)
- BASIS OF BEARING DERIVED FROM COLORADO COORDINATE SYSTEM 1983 NORTH ZONE UNLESS OTHERWISE NOTED.
- ALL MEASURED DISTANCES ARE GRID.
COMBINED SCALE FACTOR: .99972326
- OPERATOR: ROB WILSON / PDOP = 1.8
- SURFACE USE OF LOCATION IS RANGELAND.
- SEE ADDENDUM TO WELL LOCATION CERTIFICATE FOR EXISTING IMPROVEMENTS WITHIN 400' OF THE WELL PAD.
- WELL FOOTAGES ARE MEASURED AT RIGHT ANGLES TO THE SECTION LINES.
- THE BOTTOM OF HOLE BEARS S06°56'14"E 4588' FROM THE SURFACE LOCATION.



SCALE: 1" = 1000'

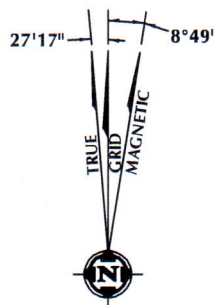
CERTIFICATE OF SURVEYOR:

THIS IS TO CERTIFY THAT THE ABOVE PLAT WAS PREPARED FROM FIELD NOTES OF ACTUAL SURVEYS MADE BY ME OR UNDER MY SUPERVISION AND THAT THE SAME ARE TRUE AND CORRECT TO THE BEST OF MY KNOWLEDGE AND BELIEF. THIS CERTIFICATE DOES NOT REPRESENT A LAND SURVEY PLAT OR IMPROVEMENT SURVEY PLAT AS DEFINED BY C.R.S. 38-51-102 AND CANNOT BE RELIED UPON TO DETERMINE OWNERSHIP.

Benjamin J. Reenders
 BENJAMIN J. REENDERS
 PROFESSIONAL LAND SURVEYOR
 COLORADO REGISTRATION NUMBER 38305

2/22/12

NOTICE:
 ACCORDING TO COLORADO STATE LAW YOU MUST COMMENCE ANY LEGAL ACTION BASED UPON ANY DEFECT IN THIS SURVEY WITHIN THREE YEARS AFTER YOU FIRST DISCOVER SUCH DEFECT. IN NO EVENT MAY ANY ACTION BASED UPON ANY DEFECT IN THIS SURVEY BE COMMENCED MORE THAN TEN YEARS FROM THE DATE ON THE CERTIFICATION SHOWN HEREON.



NOTE:
 MAGNETIC NORTH IS CURRENT AS OF 2/22/2012.
 MAGNETIC NORTH CHANGES WEST 0°08' PER YEAR.

WELL PAD - RAYMOND 4 PAD NENE

RAYMOND 16N-29HZ
 WELL LOCATION CERTIFICATE
 253' FNL & 1296' FEL NENE (SURFACE)
 460' FSL & 775' FEL SESE (BOTTOM)
 LOCATED IN SECTION 29
 T3N, R66W, 6TH P.M.
 WELD COUNTY, COLORADO

Kerr-McGee Oil &
 Gas Onshore L.P.
 1099 18th Street
 Denver, Colorado 80202

CONSULTING, LLC

2155 North Main Street
 Sheridan, Wyoming 82801
 Phone 307-674-0609
 Fax 307-674-0182

DRAFTED BY: APF

CHECKED BY: BJR

DATE DRAFTED: 9/2/11

DATE SURVEYED: 2/21/12

REVISED: 2/22/12

FILE NAME: 11-58

K:\MADAKO\2011\11_58_WATTENBERG_SEC_29_29H2\11_58_WATTENBERG_SEC_29_29H2\11_58_WATTENBERG_SEC_29_29H2.dwg, 2/24/2012 2:02:55 PM, ardy