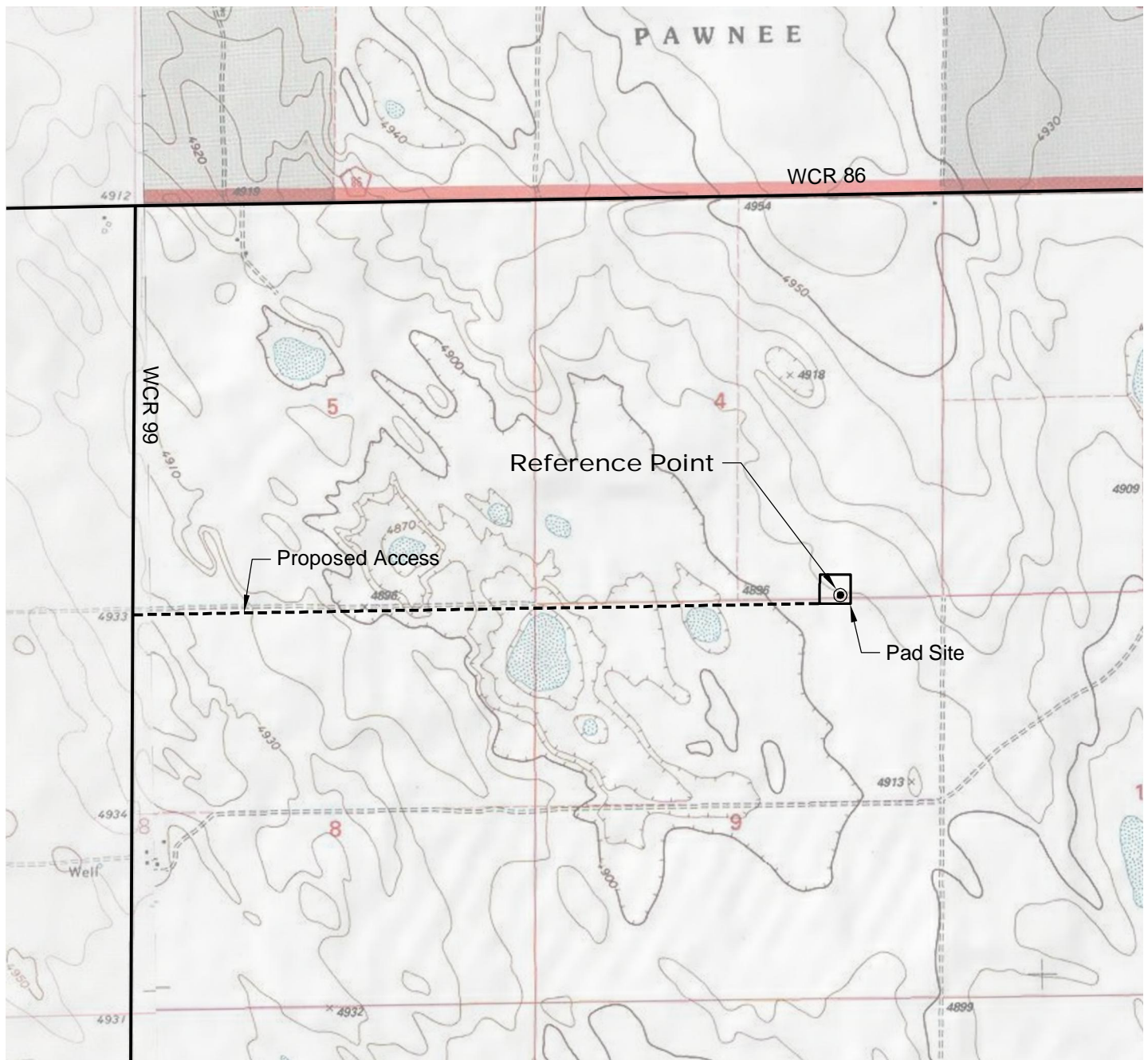


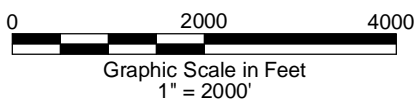
# ACCESS ROAD MAP



## DRIVING DIRECTIONS:

MP 0.0 - Intersection of Highway 14 a.k.a. WCR 90 & Highway 392 a.k.a. WCR 77 in Briggsdale; East on Highway 14  
 MP 10.0 - Right on WCR 97  
 MP 11.9 - Left on WCR 86  
 MP 12.9 - Right on WCR 99  
 MP 13.9 - Left onto access to pad  
 MP 15.6 - Pergamos 4-44-7-60 Pad

6/20/12



**GEO SURV**

LAND SURVEYING AND MAPPING  
 LAFAYETTE - WINTER PARK  
 Ph 303 666 0379 Fx 303 665 6320

**CARRIZO OIL & GAS, INC**  
 PERGAMOS 4-44-7-60 PAD

**SE1/4 SE1/4 SEC. 4 T7N R60W**  
**6th PM WELD COUNTY COLORADO**