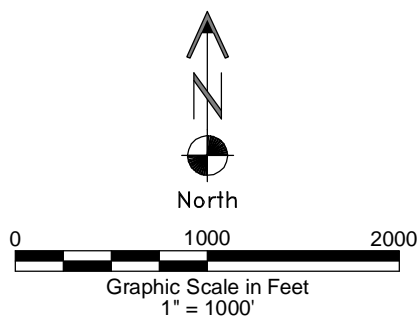
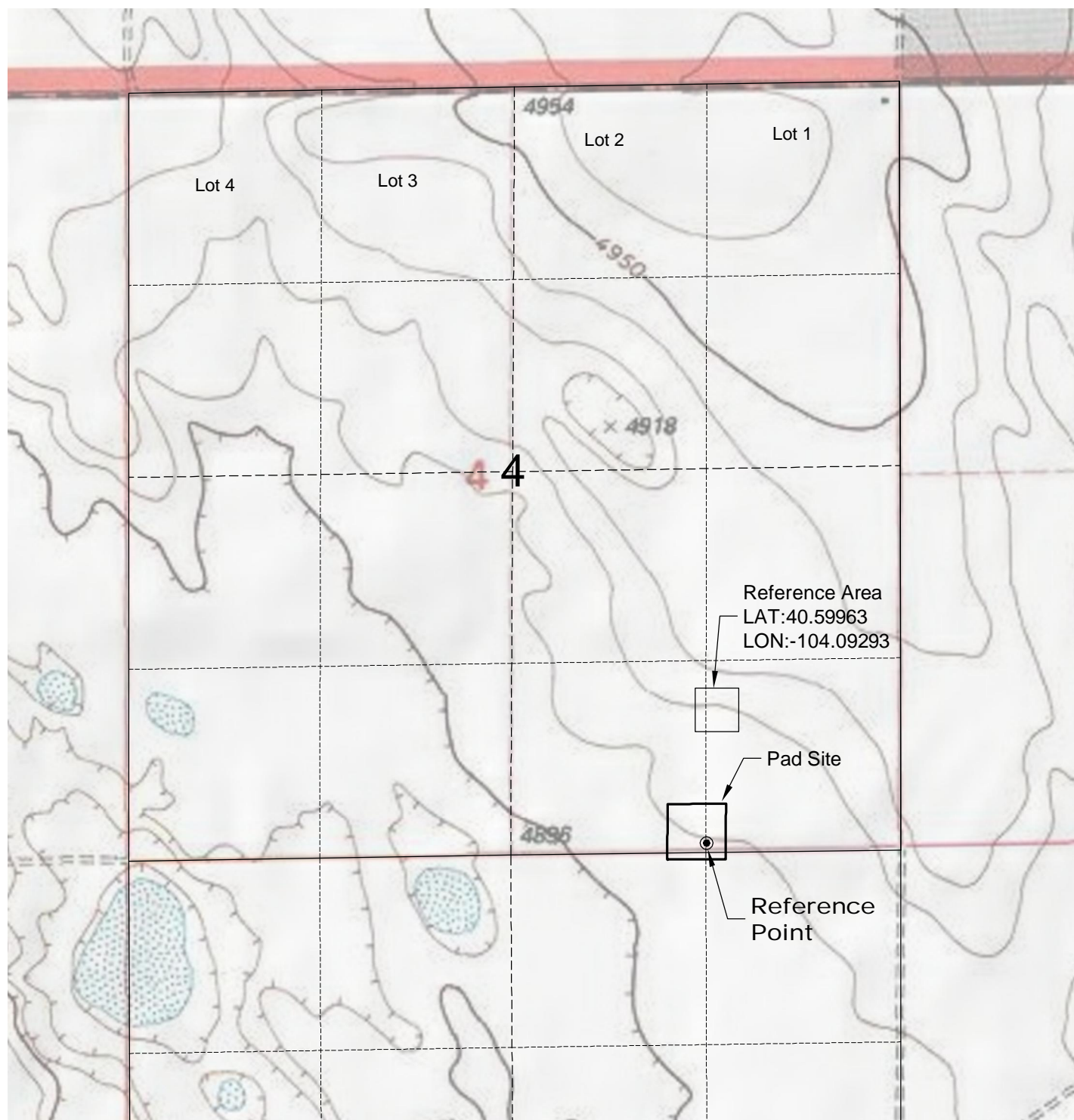


DWG: G:\GEOSURV\WeldzNorth\Carrizo 110004\Wellplats\Pergamos 4-44-7-60 .320\Pergamos 4-44-7-60 F2A R3.dwg USER: MTC DATE: Jun 20, 2012 9:58am



6/20/12



LAND SURVEYING AND MAPPING
LAFAYETTE - WINTER PARK
Ph 303 666 0379 Fx 303 665 6320

CARRIZO OIL & GAS, INC
PERGAMOS 4-44-7-60 PAD

SE1/4 SE1/4 SEC. 4 T7N R60W
6th PM WELD COUNTY COLORADO