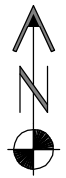
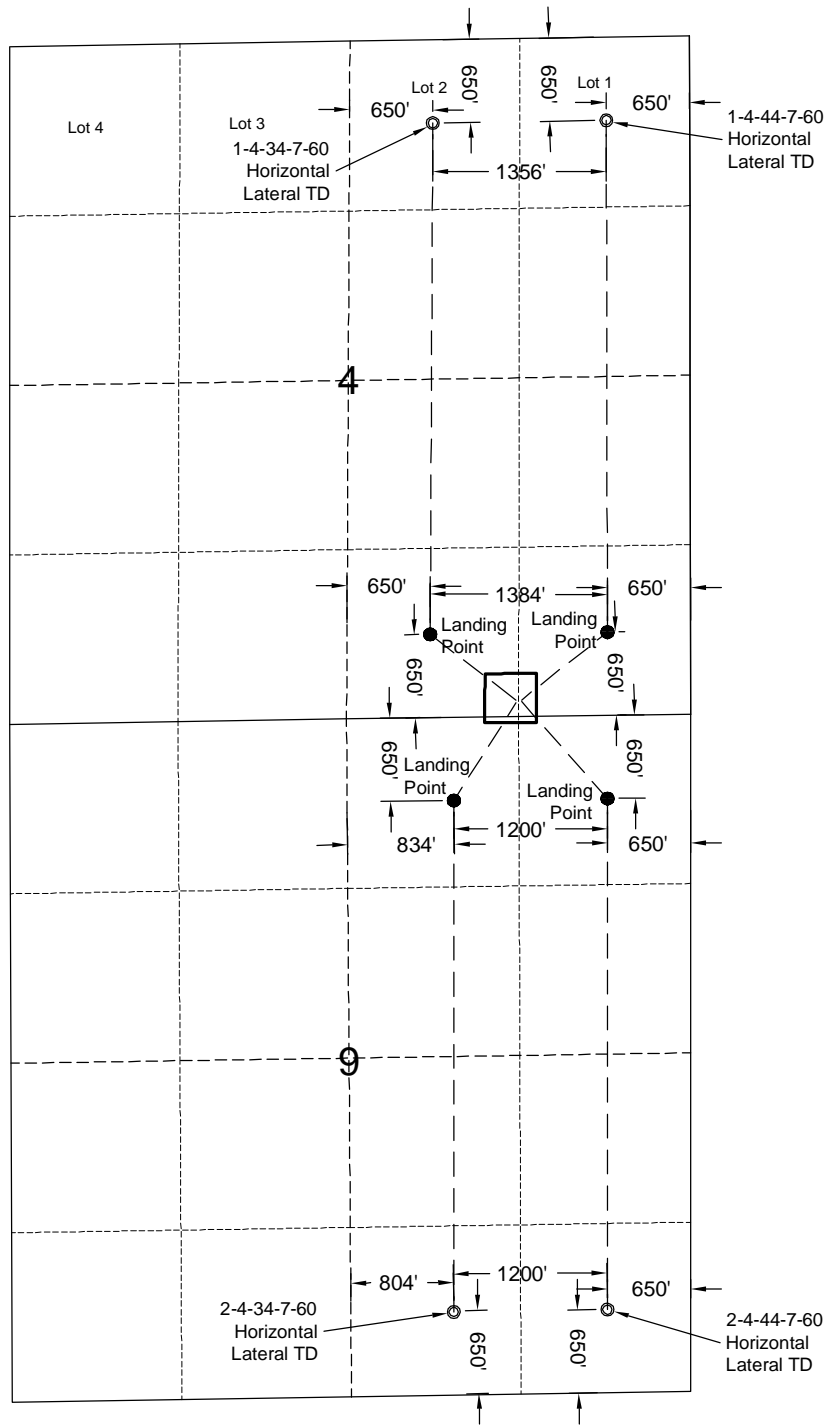


# MULTI-WELL PLAN



North

0 1500 3000

Graphic Scale in Feet  
1" = 1500'



LAND SURVEYING AND MAPPING  
LAFAYETTE - WINTER PARK  
Ph 303 666 0379 Fx 303 665 6320

CARRIZO OIL & GAS, INC  
PERGAMOS 4-44-7-60 PAD

SE1/4 SE1/4 SEC. 4 T7N R60W  
6th PM WELD COUNTY COLORADO

6/20/12