

LOCATION DRAWING

VEGETATION:
PASTURE

SURFACE USE:
GRAZING

REFERENCE POINT

LATITUDE: 40.59731

LONGITUDE: -104.09303

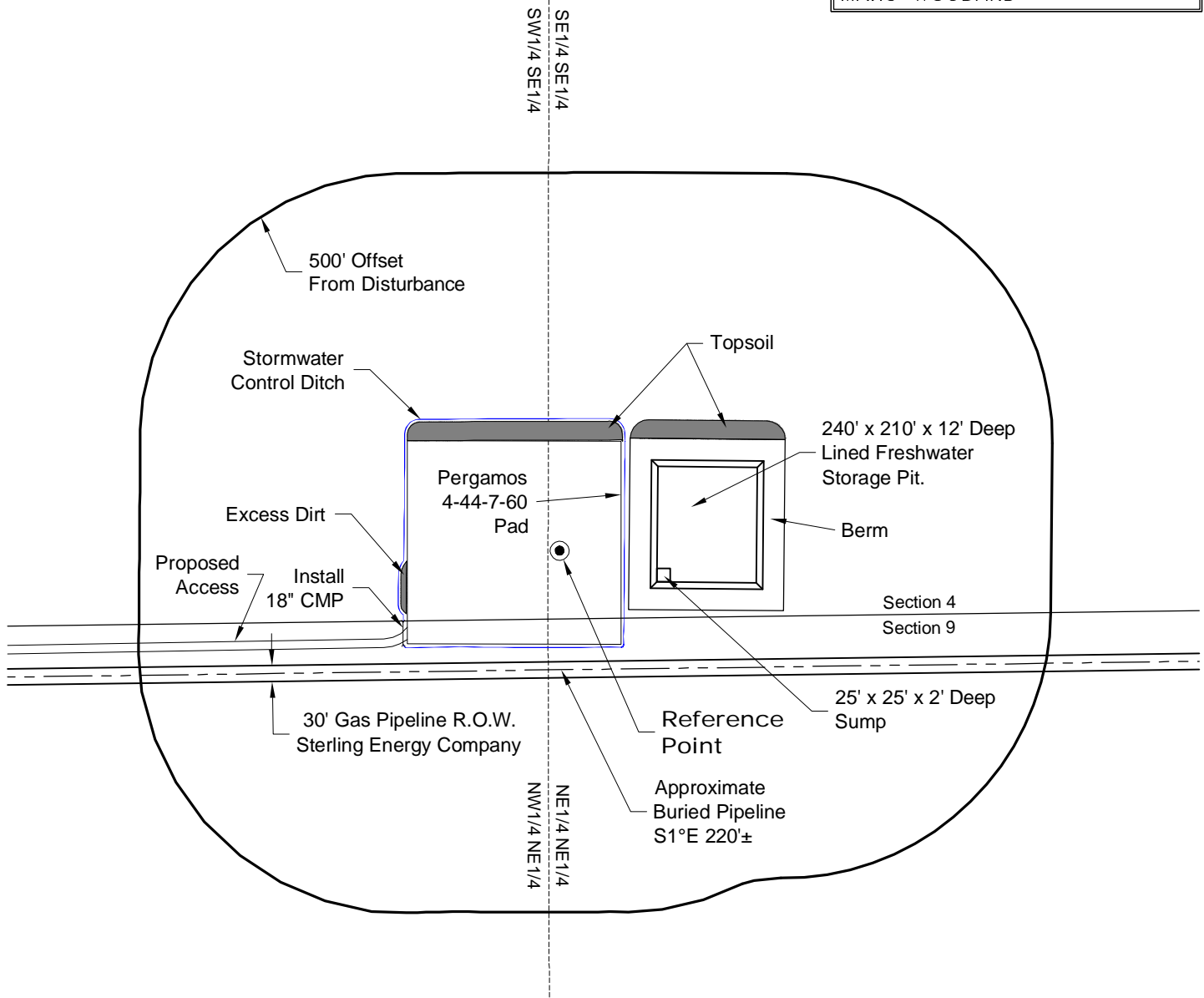
FOOTAGE: 128 FSL 1322 FEL

GROUND ELEVATION: 4910.3

PDOP: 1.8 DATE: 3/19/2012

INSTRUMENT OPERATOR:

MARC WOODARD



NOTE:

ALL PRODUCTION FACILITIES WILL BE ON PAD.

DISTURBANCE ACREAGE:
4.3± DRILLING OPERATIONS
2.3± FRESHWATER PIT
1.0± INTERIM RECLAIM

6/20/12



0 300 600
Graphic Scale in Feet
1" = 300'



LAND SURVEYING AND MAPPING
LAFAYETTE - WINTER PARK
Ph 303 666 0379 Fx 303 665 6320

CARRIZO OIL & GAS, INC
PERGAMOS 4-44-7-60 PAD

SE1/4 SE1/4 SEC. 4 T7N R60W
6th PM WELD COUNTY COLORADO