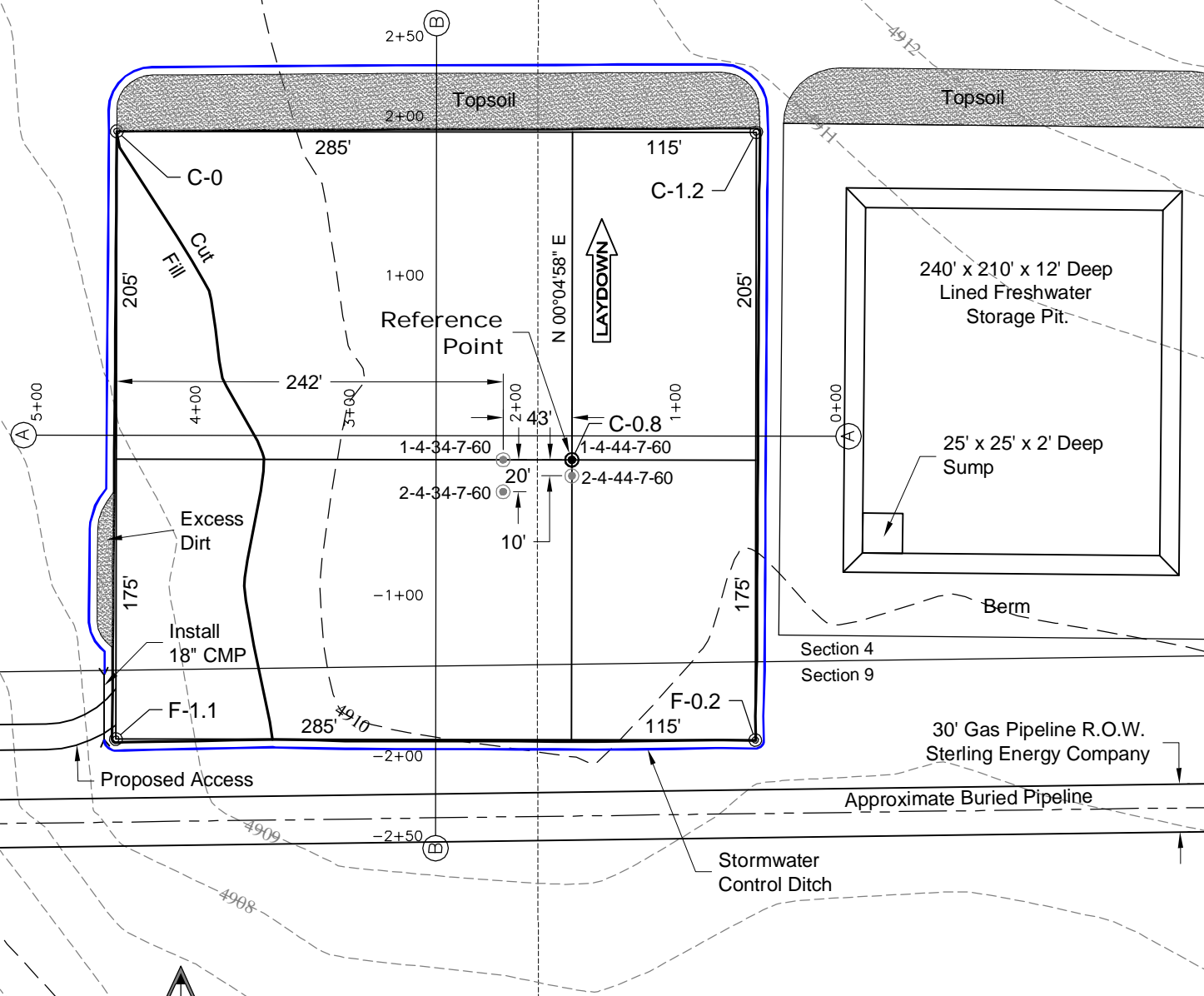


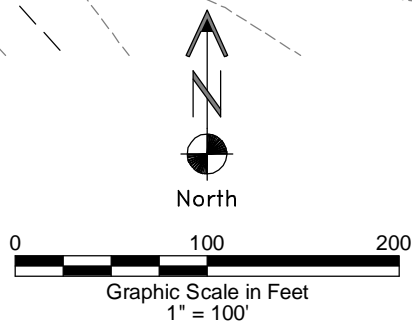
1 of 2

SURFACE USE:
GRAZING

PAD 380'X400' ELEV= 4909.5'			
DISTURBED AREA=4.3± ACRES			
ESTIMATED DIRT QUANTITIES			
CUTx10%	FILL	TOPSOIL	EXCESS
3,150	320	2,800	30
NOTE: VOLUMES IN CUBIC YARDS. TOPSOIL INCLUDED IN VOLUMES AT A DEPTH OF 6". PIT NOT INCLUDED IN TOTAL EXCESS.			



NOTE:
10% ALLOWANCE IS MADE FOR SOIL EXPANSION.



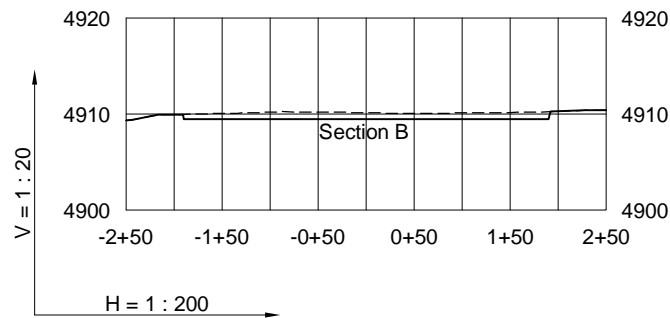
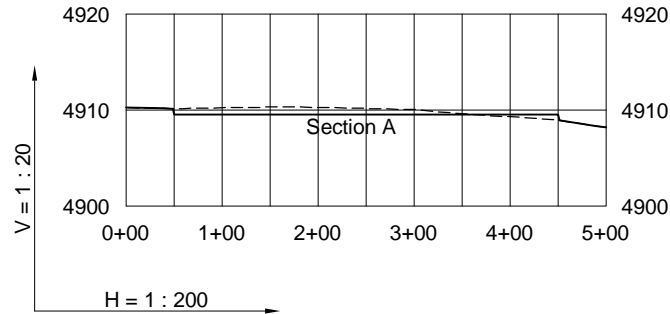
LAND SURVEYING AND MAPPING
LAFAYETTE - WINTER PARK
Ph 303 666 0379 Fx 303 665 6320

CARRIZO OIL & GAS, INC
PERGAMOS 4-44-7-60 PAD

SE1/4 SE1/4 SEC. 4 T7N R60W
6th PM WELD COUNTY COLORADO

CONSTRUCTION LAYOUT DRAWING

2 of 2



6/20/12

----- Existing Ground
 _____ Proposed Grade



LAND SURVEYING AND MAPPING
LAFAYETTE - WINTER PARK
 Ph 303 666 0379 Fx 303 665 6320

CARRIZO OIL & GAS, INC
PERGAMOS 4-44-7-60 PAD

SE1/4 SE1/4 SEC. 4 T7N R60W
6th PM WELD COUNTY COLORADO