

# Frac Wellbore Schematic Report

Well Name: UPRC 07-16G

VERTICAL - ORIGINAL HOLE, 6/20/2012 10:35:06 AM

## Well Header

API 05-123-15175	Business Unit WATTENBERG	District 15	Well Config VERTICAL
Original KB Elevation (ft) 4,708.00	KB - GL / MSL (ftKB) 9.00	Spud Date 9/22/1991	P & A Date
Comment			

Directions To Well  
WCR 39 & 46, NORTH 0.2, WEST 0.1, SOUTH 0.1 INTO.

Current PBTD (ftKB)  
ORIGINAL HOLE - 7,214.2

## Surface Location (Congressional)

Quarter 1	Quarter 2	Quarter 3	Quarter 4	Section	Township	Twnshp N...	Range	Rng E/W Dir
		SE	SE	7	4	N	65	W

## Bottom Hole Location

North-South Distance (ft)	From N or S Line	East-West Distance (ft)	From E or W Line

## Plug Back Total Depths

Date	Depth (ftKB)	Method	Com
9/30/1991	7,198.0	CASED HOLE LOG	DEPTH LOGGER
1/31/2008	7,183.0	TAG	FILL

## Wellbore Sections

Section Des	Size (in)	Act Top (ftKB)	Act Btm (ftKB)
Surface	12 1/4	9.0	515.0
Production	7 7/8	515.0	7,266.0

## Zone Statuses

Zone Name	Status Date	Status	Job
CODELL	10/18/1991	PR	DRILLING/COMPLETION - ORIGINAL, 9/22/1991 00:00
CODELL	12/21/2000	PR	RE-FRAC, 12/15/2000 00:00
CODELL	3/19/2008	PR	TRI-FRAC, 1/30/2008 00:00
CODELL	1/10/2012	SI	RE-FRAC, 1/10/2012 06:00
CODELL	2/27/2012	PR	COMMINGLE ZONES, 2/21/2012 00:00
NIOBRARA	10/18/1991	PR	DRILLING/COMPLETION - ORIGINAL, 9/22/1991 00:00
NIOBRARA	12/21/2000	PR	RE-FRAC, 12/15/2000 00:00
NIOBRARA	3/19/2008	PR	TRI-FRAC, 1/30/2008 00:00
NIOBRARA	1/18/2012	PR	RE-FRAC, 1/10/2012 06:00
NIOBRARA	2/27/2012	PR	COMMINGLE ZONES, 2/21/2012 00:00

## Casing Strings

Csg Des	Run Date	OD (in)	Wt/Len (lb/ft)	Grade	Top (ftKB)	Set Depth (ftKB)
Surface Casing	9/22/1991	8 5/8	23.00	WC-50	9.0	515.0
Production	9/27/1991	4 1/2	11.60	L-80	9.0	7,261.0

## Cement

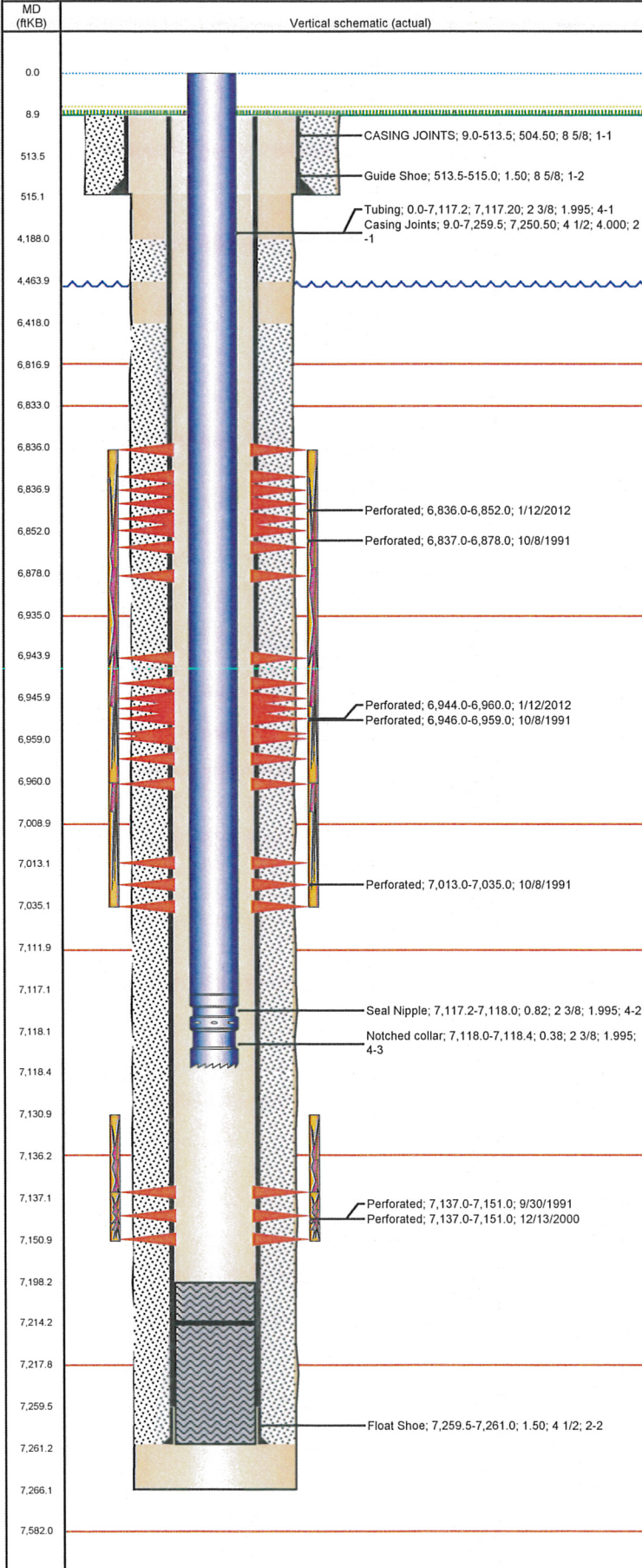
Des	Top (ftKB)	Btm (ftKB)
SURFACE CASING CEMENT	9.0	515.0
PRODUCTION CASING CEMENT	4,188.0	4,464.0
PRODUCTION CASING CEMENT	6,418.0	7,261.0

## Tubing Components

Item Des	OD (in)	Wt (lb/ft)	Grade	Jts	Len (ft)
Tubing	2 3/8	4.70	J-55	230	7,117.20
Seal Nipple	2 3/8	4.70	J-55	1	0.82
Notched collar	2 3/8	4.70	J-55	1	0.38

## Perforation Data

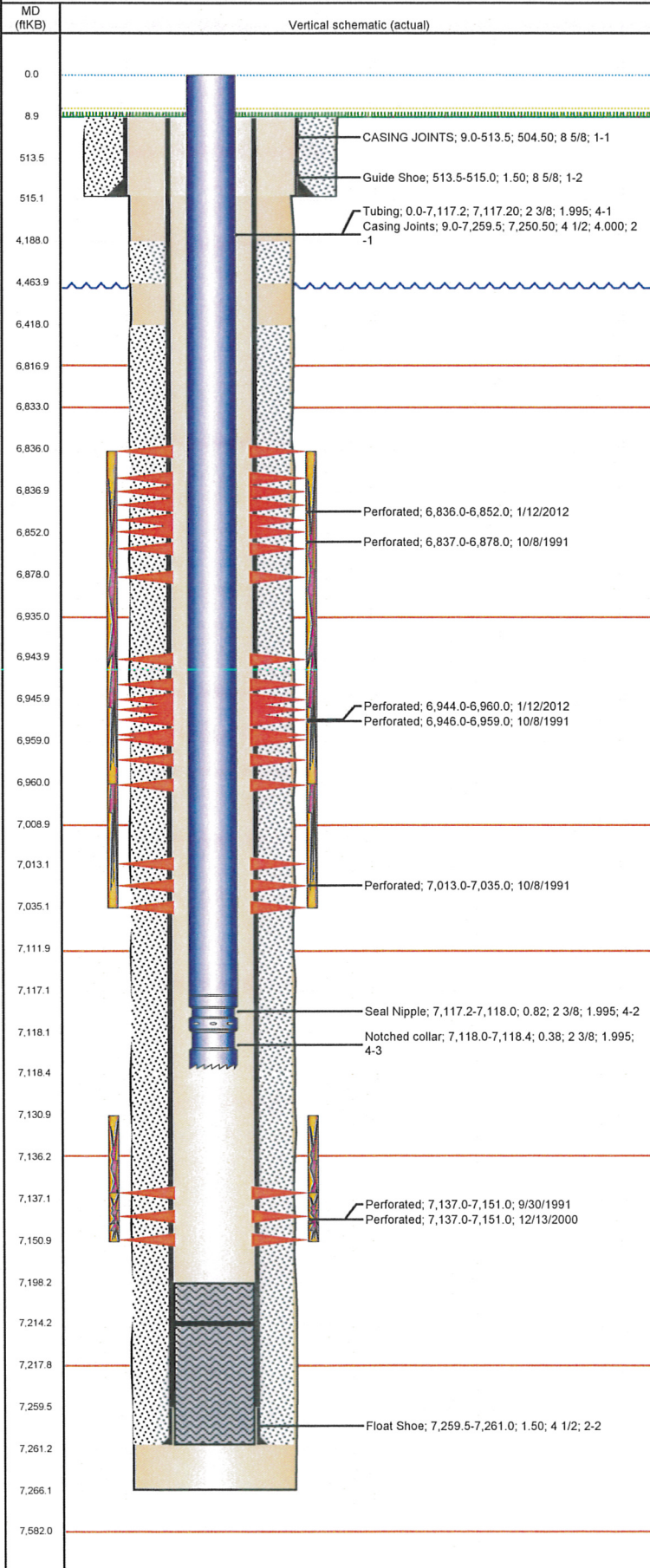
Zone	Bnch/St g	Entered Shot Total	Top (ftKB)	Btm (ftKB)	Date
NIOBRARA, ORIGINAL HOLE	A	32	6,836.0	6,852.0	1/12/2012
NIOBRARA, ORIGINAL HOLE	A	12	6,837.0	6,878.0	10/8/1991
NIOBRARA, ORIGINAL HOLE	B	32	6,944.0	6,960.0	1/12/2012
NIOBRARA, ORIGINAL HOLE	B	12	6,946.0	6,959.0	10/8/1991
NIOBRARA, ORIGINAL HOLE	C	10	7,013.0	7,035.0	10/8/1991
CODELL, ORIGINAL HOLE		56	7,137.0	7,151.0	12/13/2000
CODELL, ORIGINAL HOLE		56	7,137.0	7,151.0	9/30/1991





Well Name: UPRC 07-16G

VERTICAL - ORIGINAL HOLE, 6/20/2012 10:35:07 AM



Stimulations & Treatments			
Bnch/Stg	Date	Zone	Primary Job Type
	10/1/1991	CODELL, ORIGINAL HOLE	DRILLING/COMPLETION - ORIGINAL
Comment CODELL FRAC			
Total Add Amount Proppant 250500 lb; Proppant 100 MESH 10000 lb		Total Clean Volume... 84710.01	Vol Slurry Tot (gal) Vol Gas Tot (MCF)
Avg Treat Pressure (psi)	Max Treat Pressure (psi)	Avg Treat Rate (bbl/min)	Max Treat Rate (bbl/min)
3,500.0	4,000.0	16.00	18.00
Bnch/Stg	Date	Zone	Primary Job Type
	10/8/1991	NIOBRARA, ORIGINAL HOLE	DRILLING/COMPLETION - ORIGINAL
Comment NIOBRARA FRAC - CLOSE TO SCREENING OUT FROM 6TH STAGE THRU FLUSH			
Total Add Amount Proppant 163000 lb; Proppant 100 MESH 10000 lb		Total Clean Volume... 70020.00	Vol Slurry Tot (gal) Vol Gas Tot (MCF)
Avg Treat Pressure (psi)	Max Treat Pressure (psi)	Avg Treat Rate (bbl/min)	Max Treat Rate (bbl/min)
5,900.0	5,980.0	12.00	12.80
Bnch/Stg	Date	Zone	Primary Job Type
	12/13/2000	CODELL, ORIGINAL HOLE	RE-FRAC
Comment CODELL REFRAC			
Total Add Amount Proppant 245800 lb		Total Clean Volume... 135240.01	Vol Slurry Tot (gal) Vol Gas Tot (MCF)
Avg Treat Pressure (psi)	Max Treat Pressure (psi)	Avg Treat Rate (bbl/min)	Max Treat Rate (bbl/min)
6,143.0	6,775.0	13.90	14.30
Bnch/Stg	Date	Zone	Primary Job Type
	2/12/2008	CODELL, ORIGINAL HOLE	TRI-FRAC
Comment (CODELL TRIFRAC) TREATMENT WENT WELL RAN 3PSA STAGE AS A 2-4 PSA RAMP			
Total Add Amount Proppant Ottawa 245973 lb		Total Clean Volume... 131670.00	Vol Slurry Tot (gal) Vol Gas Tot (MCF)
Avg Treat Pressure (psi)	Max Treat Pressure (psi)	Avg Treat Rate (bbl/min)	Max Treat Rate (bbl/min)
5,617.0	5,749.0	18.09	18.34
Bnch/Stg	Date	Zone	Primary Job Type
	1/17/2012	NIOBRARA, ORIGINAL HOLE	DRILLING/COMPLETION - ORIGINAL
Comment NO ISSUES TO REPORT. AVERAGE VISC 16.57, PH 10.16, TEMP 66.5, POST 5 MIN 3408.			
Total Add Amount Proppant Ottawa 251541 lb		Total Clean Volume... 156689.40	Vol Slurry Tot (gal) Vol Gas Tot (MCF)
Avg Treat Pressure (psi)	Max Treat Pressure (psi)	Avg Treat Rate (bbl/min)	Max Treat Rate (bbl/min)
4,309.0	4,581.0	36.00	40.40
Other In Hole			
Run Date	Des	OD (in)	Top (ftKB) Btm (ftKB)
Logs			
Date	Type	Top (ftKB)	Btm (ftKB)
9/26/1991	Compensated Density	3,600.0	7,230.0
9/26/1991	Induction	514.0	7,258.0
9/30/1991	Cement Bond	3,900.0	5,000.0
9/30/1991	Cement Bond	6,200.0	7,196.0
12/10/2010	GYRO	9.0	7,090.0