

**HALLIBURTON**

---

# **WILLIAMS PRODUCTION RMT INC - EBUS**

---

**GM 13-23  
GRAND VALLEY  
Garfield County , Colorado**

## **Cement Surface Casing**

**18-Jun-2011**

### **Post Job Summary**

*The Road to Excellence Starts with Safety*

Sold To #: 300721		Ship To #: 2856187		Quote #:		Sales Order #: 8202295	
Customer: WILLIAMS PRODUCTION RMT INC - EBUS				Customer Rep: HARTL, AL			
Well Name: GM		Well #: 13-23		API/UWI #: 05-045-20474			
Field: GRAND VALLEY		City (SAP): PARACHUTE		County/Parish: Garfield		State: Colorado	
Lat: N 39.506 deg. OR N 39 deg. 30 min. 22.691 secs.				Long: W 108.083 deg. OR W -109 deg. 55 min. 0.278 secs.			
Contractor: NABORS 576		Rig/Platform Name/Num: NABORS 576					
Job Purpose: Cement Surface Casing							
Well Type: Development Well				Job Type: Cement Surface Casing			
Sales Person: SCOTT, KYLE				Srv Supervisor: ANGLESTEIN, TROY		MBU ID Emp #: 436099	
Job Personnel							
HES Emp Name	Exp Hrs	Emp #	HES Emp Name	Exp Hrs	Emp #	HES Emp Name	Exp Hrs
ANGLESTEIN, TROY Edward WM		436099	JENSEN, JESSE Robert		478774	KEANE, JOHN Donovan	486519
Equipment							
HES Unit #	Distance-1 way	HES Unit #	Distance-1 way	HES Unit #	Distance-1 way	HES Unit #	Distance-1 way
10296152C	60 mile	10867423	60 mile	10897797	60 mile	10897887	60 mile
10951250	60 mile						
Job Hours							
Date	On Location Hours	Operating Hours	Date	On Location Hours	Operating Hours	Date	On Location Hours
6/18/2011	5	1					
TOTAL		Total is the sum of each column separately					
Job				Job Times			
Formation Name				Date	Time	Time Zone	
Formation Depth (MD)	Top	Bottom		Called Out	18 - Jun - 2011	07:00	MST
Form Type	BHST			On Location	18 - Jun - 2011	11:30	MST
Job depth MD	785. ft	Job Depth TVD	785. ft	Job Started	18 - Jun - 2011	13:46	MST
Water Depth		Wk Ht Above Floor	4. ft	Job Completed	18 - Jun - 2011	14:21	MST
Perforation Depth (MD)	From	To		Departed Loc	18 - Jun - 2011	15:30	MST
Well Data							
Description	New / Used	Max pressure psig	Size in	ID in	Weight lbm/ft	Thread	Grade
OPEN HOLE SECTION				13.5			
SURFACE CASING	Unknow n		9.625	9.001	32.3		H-40
Sales/Rental/3 <sup>rd</sup> Party (HES)							
Description				Qty	Qty uom	Depth	Supplier
PLUG,CMTG,TOP,9 5/8,HWE,8.16 MIN/9.06 MA				1	EA		
Tools and Accessories							
Type	Size	Qty	Make	Depth	Type	Size	Qty
Guide Shoe					Packer		
Float Shoe					Bridge Plug		
Float Collar					Retainer		
Insert Float							
Stage Tool							
Miscellaneous Materials							
Gelling Agt		Conc		Surfactant		Conc	
Treatment Fld		Conc		Inhibitor		Conc	
Fluid Data							
Stage/Plug #: 1							

Fluid #	Stage Type	Fluid Name	Qty	Qty uom	Mixing Density lbm/gal	Yield ft <sup>3</sup> /sk	Mix Fluid Gal/sk	Rate bbl/min	Total Mix Fluid Gal/sk
1	Spacer			bbl	8.33	.0	.0	6	
2	Tail Cement	VERSACEM (TM) SYSTEM (452010)		sacks	12.8	2.11	11.75	8	11.75
		11.75 Gal	FRESH WATER						
3	Displacement Fluid			bbl	8.34	.0	.0	10	
<b>Calculated Values</b>		<b>Pressures</b>		<b>Volumes</b>					
Displacement	57.4	Shut In: Instant		Lost Returns	0	Cement Slurry	75.2	Pad	
Top Of Cement	SURFACE	5 Min		Cement Returns	12	Actual Displacement	57.4	Treatment	
Frac Gradient		15 Min		Spacers	20	Load and Breakdown		Total Job	153
<b>Rates</b>									
Circulating	10	Mixing	8	Displacement	10	Avg. Job	8		
Cement Left In Pipe	Amount	45 ft	Reason	Shoe Joint					
Frac Ring # 1 @	ID	Frac ring # 2 @	ID	Frac Ring # 3 @	ID	Frac Ring # 4 @	ID		
The Information Stated Herein Is Correct				Customer Representative Signature					



*The Road to Excellence Starts with Safety*

Sold To #: 300721	Ship To #: 2856187	Quote #:	Sales Order #: 8202295
Customer: WILLIAMS PRODUCTION RMT INC - EBUS	Customer Rep: HARTL, AL		
Well Name: GM	Well #: 13-23	API/UWI #: 05-045-20474	
Field: GRAND VALLEY	City (SAP): PARACHUTE	County/Parish: Garfield	State: Colorado
Legal Description:			
Lat: N 39.506 deg. OR N 39 deg. 30 min. 22.691 secs.		Long: W 108.083 deg. OR W -109 deg. 55 min. 0.278 secs.	
Contractor: NABORS 576	Rig/Platform Name/Num: NABORS 576		
Job Purpose: Cement Surface Casing	Ticket Amount:		
Well Type: Development Well	Job Type: Cement Surface Casing		
Sales Person: SCOTT, KYLE	Srv Supervisor: ANGLESTEIN, TROY	MBU ID Emp #: 436099	

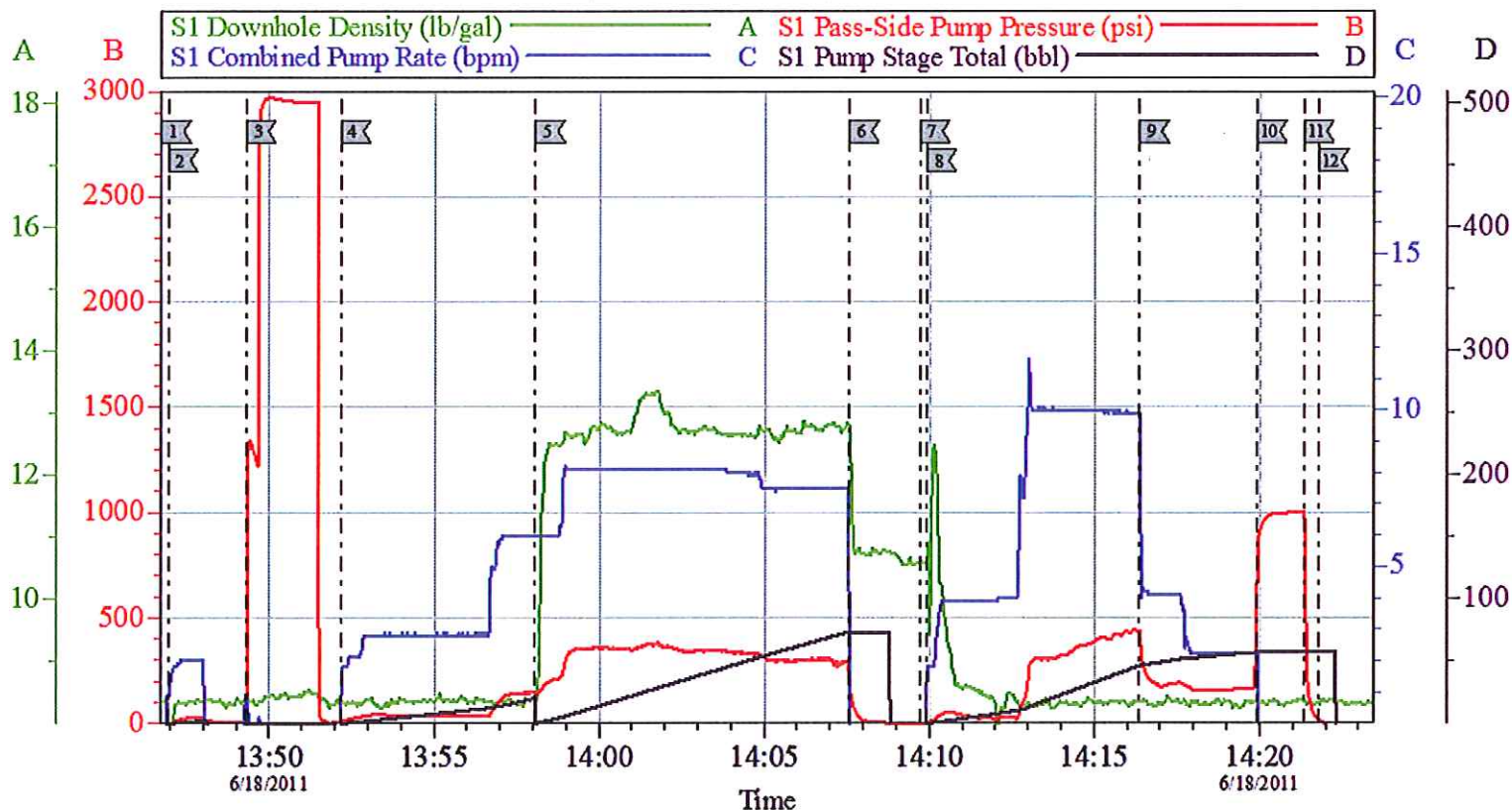
Activity Description	Date/Time	Cht #	Rate bbl/ min	Volume bbl		Pressure psig		Comments
				Stage	Total	Tubing	Casing	
Call Out	06/18/2011 07:00							
Pre-Convoy Safety Meeting	06/18/2011 10:00							ALL HES EMPLOYEES
Arrive At Loc	06/18/2011 11:30							RIG STILL RUNNING CASING CIRCULATED FOR 1 HOUR
Assessment Of Location Safety Meeting	06/18/2011 11:45							ALL HES EMPLOYEES
Rig-Up Equipment	06/18/2011 12:00							1 HT 400 PUMP TRUCK, 1 660 BULK TRUCK, 1 9.625 QUICK LATCH PLUG CONTAINER, 1 F 450 P/U
Pre-Job Safety Meeting	06/18/2011 13:30							ALL HES EMPLOYEES, RIG CREW, CO REP.
Start Job	06/18/2011 13:46							9.625 CASING SET AT 744.56', FC 729.56', TD: 785, OPEN HOLE 13.5", MUD WT 10 PPG, 600 BBLs OF H2O ON LOCATION, WATER SAMPLE SUBMITTED.
Pump Water	06/18/2011 13:46		2	2			30.0	FILL LINES
Pressure Test	06/18/2011 13:49		0.5	0.5		4945. 0		NO LEAKS
Pump Spacer 1	06/18/2011 13:52		6	20			150.0	FRESH WATER
Activity Description	Date/Time	Cht #	Rate bbl/ min	Volume bbl		Pressure psig		Comments
				Stage	Total	Tubing	Casing	

## Cementing Job Log

Pump Tail Cement	06/18/2011 13:58		8	75.2			350.0	200 SKS VERSACEM CMT TO BE MIXED AT 12.8 PPG, 2.11 YIELD, 11.75 GAL/SK, CMT TO BE WEIGHED VIA PRESSURE BALANCED MUD SCALES. WET AND DRY SAMPLES SUBMITTED.
Shutdown	06/18/2011 14:07							FOR NO MORE THEN 5 MINUTES,
Drop Plug	06/18/2011 14:09							PLUG LAUNCHED
Pump Displacement	06/18/2011 14:09		10	57.4			360.0	FRESHWATER
Cement Returns to Surface	06/18/2011 14:15		10	45			367.0	12 BBLS OF CEMENT TO SURFACE.
Slow Rate	06/18/2011 14:16		2	47			160.0	10 BBLS PRIOR TO CALCULATED DISPLACEMENT
Bump Plug	06/18/2011 14:19		2	57.4			168.0	PLUG LANDED AT 910 HELD FOR TWO MINUTES
Check Floats	06/18/2011 14:21							FLOATS HOLDING, NO ANNULAR FLOW AT SHAKERS NOTED
End Job	06/18/2011 14:21							THANK YOU FOR USING HES FROM TROY ANGLESTEIN AND CREW.
Post-Job Safety Meeting (Pre Rig-Down)	06/18/2011 14:30							ALL HES EMPLOYEES
Rig-Down Equipment	06/18/2011 15:00							SAFELY
Pre-Convoy Safety Meeting	06/18/2011 15:20							ALL HES EMPLOYEES
Crew Leave Location	06/18/2011 15:30							SITE WAS AS CLEAN AS WHEN WE ARRIVED



# WILLIAMS GM 13-23 SURFACE

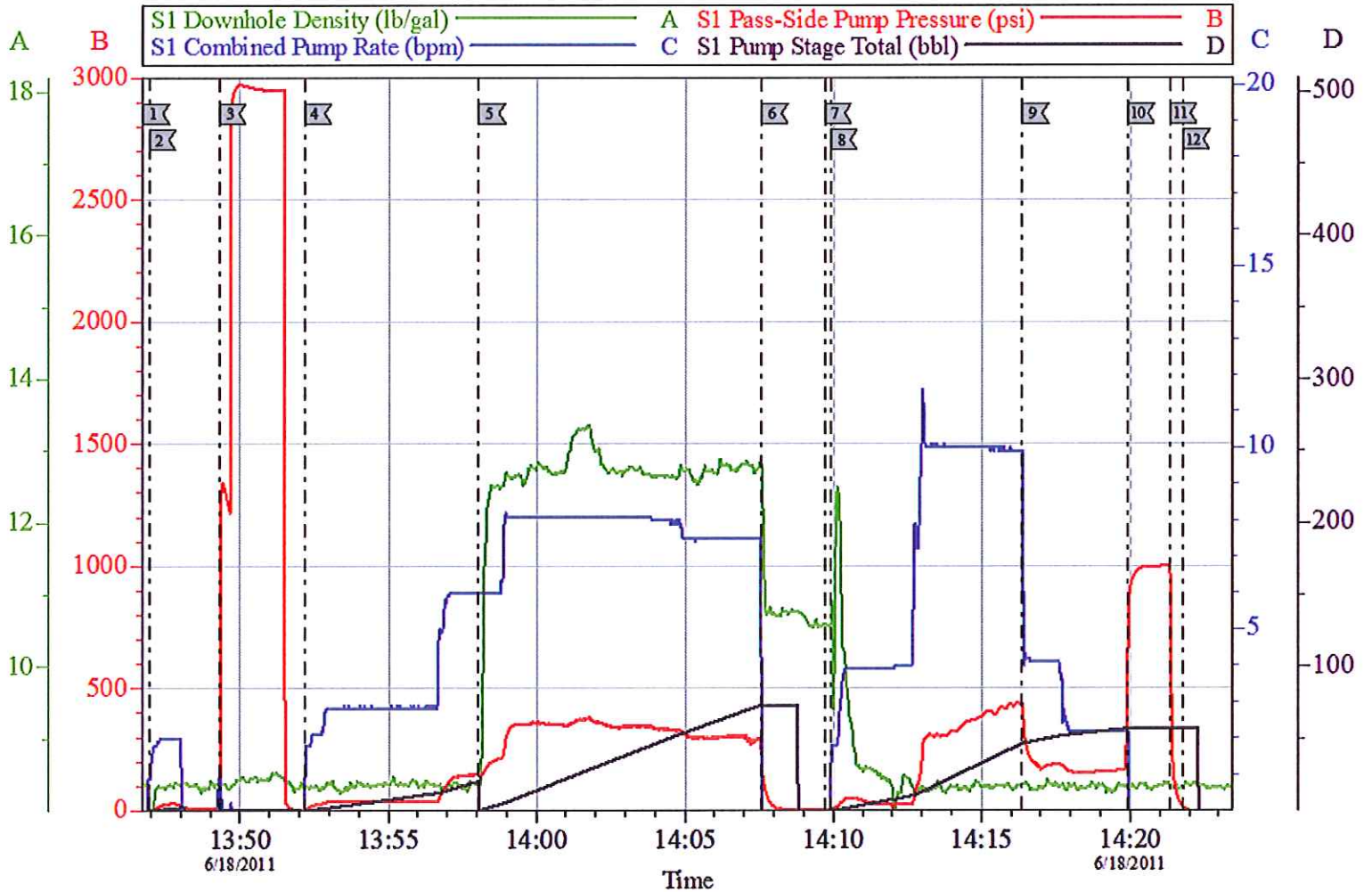


LocalEventLog			
1 START JOB	13:46:44	2 FILL LINES	13:46:56
3 TEST LINES	13:49:18	4 PUMP H2O SPACER	13:52:11
5 PUMP TAIL CEMENT	13:58:04	6 SHUTDOWN	14:07:34
7 DROP PLUG	14:09:43	8 PUMP DE PLACEMENT	14:09:55
9 SLOW RATE	14:16:22	10 BUMP PLUG	14:19:55
11 CHECK FLOATS	14:21:22	12 END JOB	14:21:48

Customer: WILLIAMS	Job Date: 18-Jun-2011	Sales Order #: 8202295
Well Description: GM13-23	Job Type: SURFACE	ADC Used: YES
Company Rep: AL HARTL	Cement Supervisor: TROY ANGLESTEIN	Elite #: 9 JESSE JENSEN

OptiCem v6.4.10  
18-Jun-11 14:45

# WILLIAMS GM 13-23 SURFACE



Customer: WILLIAMS	Job Date: 18-Jun-2011	Sales Order #: S202295	OptiCem v6.4.10 18-Jun-11 14:45
Well Description: GM13-23	Job Type: SURFACE	ADC Used: YES	
Company Rep: AL HARTL	Cement Supervisor: TROY ANGLESTEIN	Elite #: 9 JESSE JENSEN	