

QUICKSILVER RESOURCES, INC.

WELKER #34-11

LOCATED IN MOFFAT COUNTY, COLORADO

SECTION 11, T6N, R92W, 6th P.M.

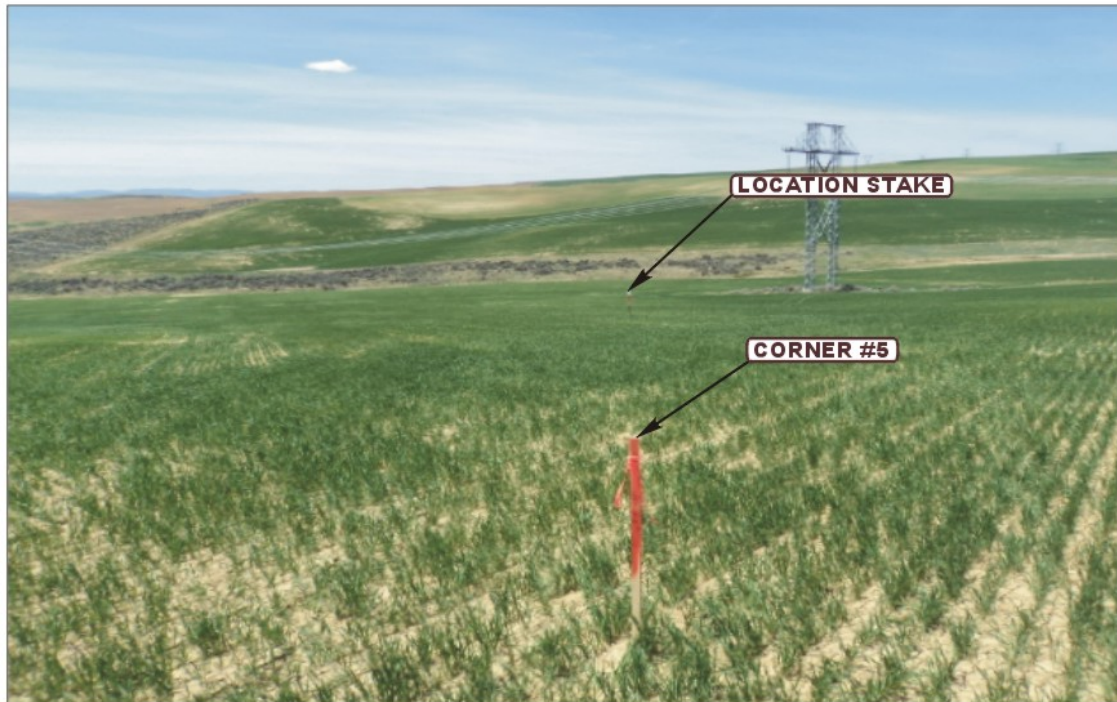


PHOTO: VIEW FROM CORNER #5 TO LOCATION STAKE

CAMERA ANGLE: WESTERLY



PHOTO: VIEW FROM BEGINNING OF PROPOSED ACCESS

CAMERA ANGLE: NORTHERLY



UELS

Uintah Engineering & Land Surveying

85 South 200 East Vernal, Utah 84078
435-789-1017 FAX (435) 789-1813

LOCATION PHOTOS

05 24 12
MONTH DAY YEAR

PHOTO
P1

TAKEN BY: G.M.

DRAWN BY: A.T.

REVISED: 00-00-00

QUICKSILVER RESOURCES, INC.

WELKER #34-11

LOCATED IN MOFFAT COUNTY, COLORADO

SECTION 11, T6N, R92W, 6th P.M.



PHOTO: VIEW OF LOCATION STAKE

CAMERA ANGLE: NORTHERLY



PHOTO: VIEW OF LOCATION STAKE

CAMERA ANGLE: EASTERLY



- Since 1964 -

UELS

Uintah Engineering & Land Surveying
85 South 200 East Vernal, Utah 84078
(435) 789-1017 * FAX (435) 789-1813

LOCATION PHOTOS

05 24 12
MONTH DAY YEAR

PHOTO
P2

TAKEN BY: G.M.

DRAWN BY: A.T.

REVISED: 00-00-00

QUICKSILVER RESOURCES, INC.

WELKER #34-11

LOCATED IN MOFFAT COUNTY, COLORADO
SECTION 11, T6N, R92W, 6th P.M.



PHOTO: VIEW OF LOCATION STAKE

CAMERA ANGLE: SOUTHERLY



PHOTO: VIEW OF LOCATION STAKE

CAMERA ANGLE: WESTERLY



- Since 1964 -

UELS

Uintah Engineering & Land Surveying
85 South 200 East Vernal, Utah 84078
(435) 789-1017 * FAX (435) 789-1813

LOCATION PHOTOS

05 24 12
MONTH DAY YEAR

PHOTO
P3

TAKEN BY: G.M.

DRAWN BY: A.T.

REVISED: 00-00-00