

LEGEND:

PROPOSED LOCATION

QUICKSILVER RESOURCES, INC.

WELKER #34-11

SECTION 11, T6N, R92W, 6th P.M.
660' FSL 1898' FEL



Uintah Engineering & Land Surveying
85 South 200 East Vernal, Utah 84078
(435) 789-1017 * FAX (435) 789-1813

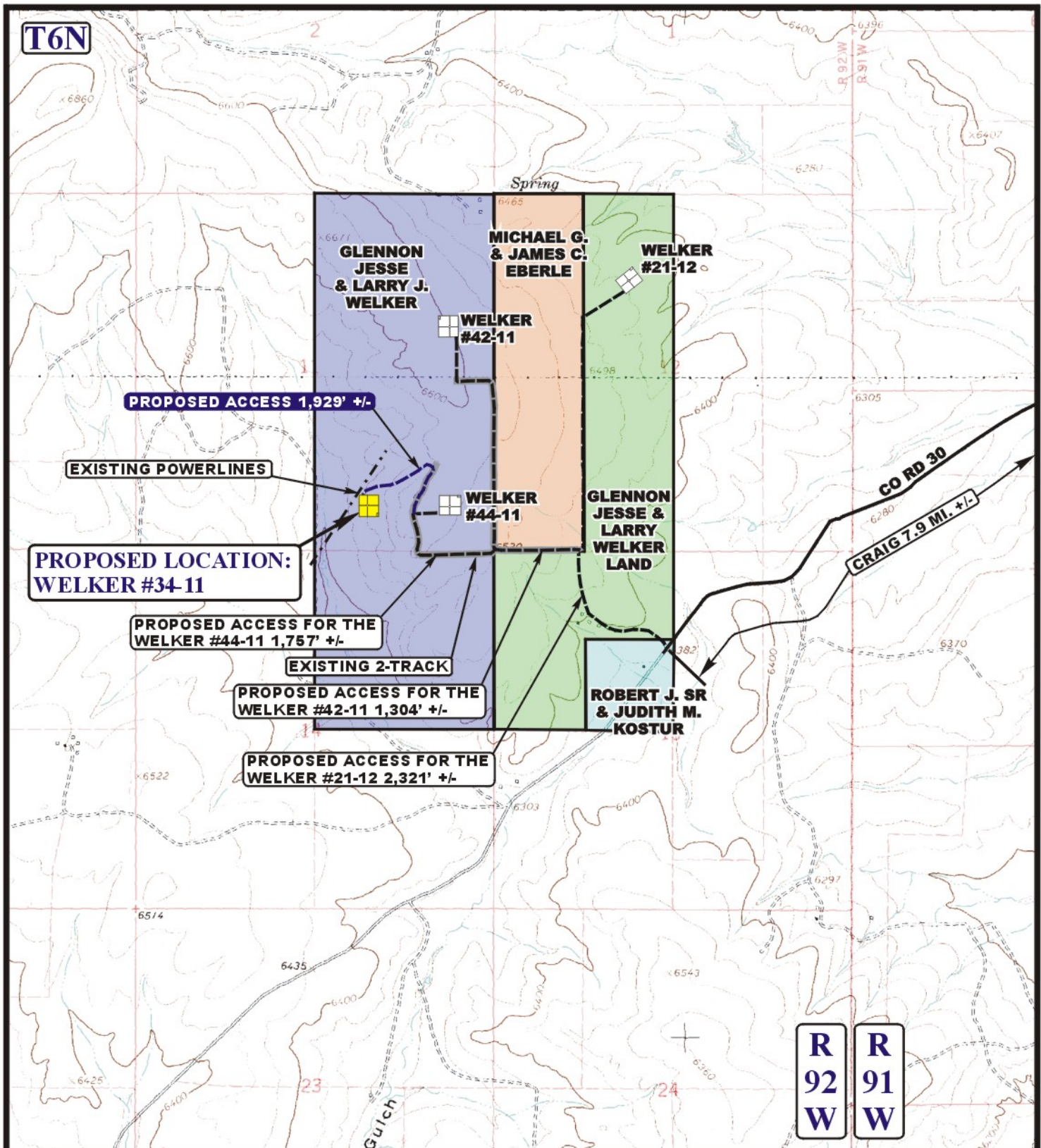


ACCESS ROAD
MAP

05 24 12
MONTH DAY YEAR

SCALE: 1:100,000 DRAWN BY: A.T. REVISED: 00-00-00

A
TOPO



LEGEND:

- EXISTING ROAD
- PROPOSED ACCESS ROAD
- EXISTING POWERLINE
- EXISTING 2-TRACK



Utah Engineering & Land Surveying
 85 South 200 East Vernal, Utah 84078
 (435) 789-1017 * FAX (435) 789-1813



QUICKSILVER RESOURCES, INC.

WELKER #34-11
SECTION 11, T6N, R92W, 6th P.M.
660' FSL 1898' FEL

ACCESS ROAD
M A P

05 24 12
 MONTH DAY YEAR

SCALE: 1" = 2000' DRAWN BY: A.T. REVISED: 00-00-00

B
TOPO