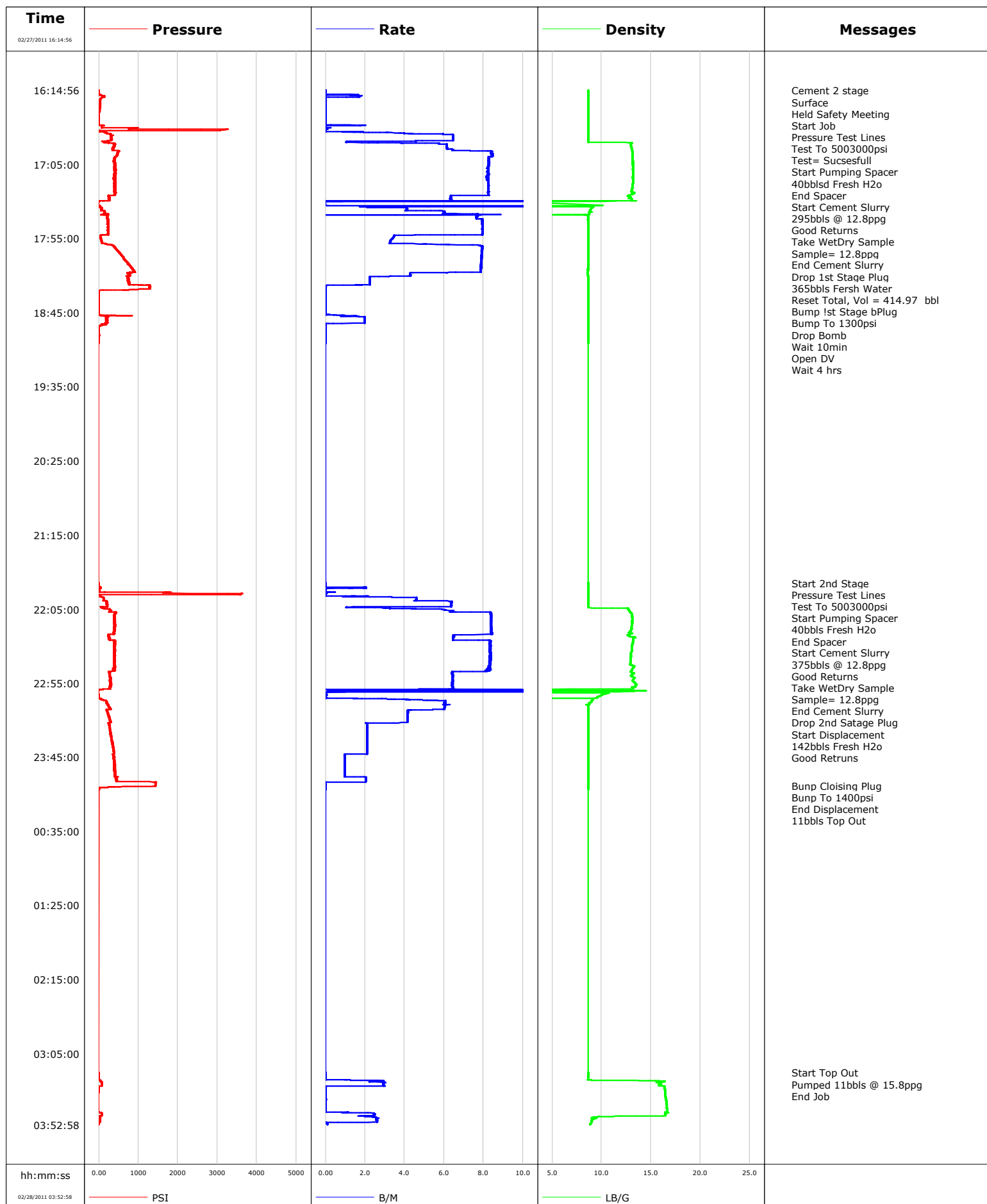


Well	RGU 344-24-198	Client	WILLIAMS
Field	RYAN GULCH	SIR No.	B708-00372
Engineer		Job Type	2 STAGE SURFACE
Country	United States	Job Date	02-27-2011





Cementing Service Report

				Customer WILLIAMS			Job Number B708-00372								
Well RGU 344-24-198			Location (legal) RYAN GULCH			Schlumberger Location		Job Start Feb/27/2011							
Field RYAN GULCH		Formation Name/Type		Deviation		Bit Size		Well MD		Well TVD					
County RIO BLANCO		State/Province Colorado		BHP		BHST		BHCT		Pore Press. Gradient					
Well Master 0631256554		API/UWI													
Rig Name CYCLONE 29		Drilled For Gas		Service Via Land		Casing/Liner									
						Depth,		Size,		Weight,		Grade		Thread	
Offshore Zone		Well Class New		Well Type Development											
Drilling Fluid Type		Max. Density		Plastic Viscosity		Tubing/Drill Pipe									
						Depth,		Size,		Weight,		Grade		Thread	
Service Line Cementing		Job Type 2 STAGE SURFACE													
Max. Allowed Tubing Press		Max. Allowed Ann. Press		WellHead Connection Single Cement head		Perforations/Open Hole									
						Top,		Bottom,				No. of Shots		Total Interval	
Service Instructions 970sks 1st stage @ 12.8ppg 1232sks 2nd stage @ 12.8ppg														Diameter	
Treat Down Casing				Displacement 325.0 bbl				Packer Type				Packer Depth			
Tubing Vol.				Casing Vol. 357.0 bbl				Annular Vol. 206.0 bbl				Openhole Vol. 554.0 bbl			
Casing/Tubing Secured <input type="checkbox"/>		1 Hole Volume Circulated prior to Cement <input type="checkbox"/>		Casing Tools				Squeeze Job							
Lift Pressure 2144 psi				Shoe Type Guide				Squeeze Type							
Pipe Rotated <input type="checkbox"/>		Pipe Reciprocated <input type="checkbox"/>		Shoe Depth 4262.0 ft				Tool Type							
No. Centralizers		Top Plugs		Bottom Plugs		Stage Tool Type				Tool Depth					
Cement Head Type				Stage Tool Depth 1891.0 ft				Tail Pipe Size							
Job Scheduled For Feb/27/2011		Arrived on Location Feb/27/2011		Leave Location Feb/27/2011		Collar Type Diff-Fill				Tail Pipe Depth					
						Collar Depth 4219.0 ft				Sqz. Total Vol.					
Date	Time 24-hr clock	Treating Pressure PSI	Flow Rate B/M	Density LB/G	Volume BBL	Message									
02/27/2011	15:02:20					Started Acquisition									
02/27/2011	16:14:56					Cement 2 stage									
02/27/2011	16:14:56					Surface									
02/27/2011	16:14:56					Held Safety Meeting									
02/27/2011	16:14:56	-6	0.0	8.64	0.0										
02/27/2011	16:14:59					Start Job									
02/27/2011	16:14:59	-6	0.0	8.64	0.0										
02/27/2011	16:15:00					Pressure Test Lines									
02/27/2011	16:15:00	-6	0.0	8.64	0.0										
02/27/2011	16:15:01					Test To 500&3000psi									
02/27/2011	16:15:01					Test= Sucsesfull									
02/27/2011	16:15:01	-6	0.0	8.64	0.0										
02/27/2011	16:16:20	-6	0.0	8.64	0.0										
02/27/2011	16:18:20	20	0.0	8.65	0.5										
02/27/2011	16:20:20	53	0.0	8.65	2.6										
02/27/2011	16:22:20	32	0.0	8.65	2.6										
02/27/2011	16:24:20	30	0.0	8.65	2.6										
02/27/2011	16:26:20	28	0.0	8.65	2.6										
02/27/2011	16:28:20	20	0.0	8.65	2.6										
02/27/2011	16:30:20	-6	0.0	8.65	2.6										
02/27/2011	16:32:20	-7	0.0	8.65	2.6										
02/27/2011	16:34:20	-7	0.0	8.65	2.6										

Well			Field		Job Start	Customer		Job Number
RGU 344-24-198			RYAN GULCH		Feb/27/2011	WILLIAMS		B708-00372
Date	Time 24-hr clock	Treating Pressure PSI	Flow Rate B/M	Density LB/G	Volume BBL	Message		
02/27/2011	16:36:20	-7	0.0	8.65	2.6			
02/27/2011	16:38:20	-6	0.0	8.65	2.6			
02/27/2011	16:40:20	106	0.0	8.65	3.3			
02/27/2011	16:42:20	32	0.0	8.65	3.4			
02/27/2011	16:44:20	222	4.4	8.64	7.6			
02/27/2011	16:46:20	322	6.4	8.65	20.1			
02/27/2011	16:46:41					Start Pumping Spacer		
02/27/2011	16:46:41	326	6.5	8.65	22.4			
02/27/2011	16:46:42					40bbld Fresh H2o		
02/27/2011	16:46:42	301	6.5	8.65	22.5			
02/27/2011	16:48:20	306	6.4	8.65	33.0			
02/27/2011	16:50:20	173	2.4	13.01	40.6			
02/27/2011	16:52:20	379	6.1	12.97	51.5			
02/27/2011	16:53:10					End Spacer		
02/27/2011	16:53:10	393	6.1	13.01	56.6			
02/27/2011	16:53:25					Start Cement Slurry		
02/27/2011	16:53:25	370	6.2	13.01	58.1			
02/27/2011	16:53:27					295bbls @ 12.8ppg		
02/27/2011	16:53:27					Good Returns		
02/27/2011	16:53:27					Take Wet&Dry Sample		
02/27/2011	16:53:27					Sample= 12.8ppg		
02/27/2011	16:53:27	367	6.1	13.02	58.3			
02/27/2011	16:54:20	353	6.2	13.08	63.7			
02/27/2011	16:56:20	496	8.4	13.11	77.5			
02/27/2011	16:58:20	471	8.4	13.11	94.3			
02/27/2011	17:00:20	410	8.3	13.11	111.1			
02/27/2011	17:02:20	376	8.3	13.12	127.6			
02/27/2011	17:04:20	397	8.3	13.14	144.1			
02/27/2011	17:06:20	422	8.2	13.16	160.7			
02/27/2011	17:08:20	433	8.2	13.14	177.1			
02/27/2011	17:10:20	416	8.2	13.19	193.6			
02/27/2011	17:12:20	392	8.2	13.16	210.0			
02/27/2011	17:14:20	383	8.2	13.14	226.4			
02/27/2011	17:16:20	406	8.2	13.17	242.8			
02/27/2011	17:18:20	407	8.2	13.13	259.3			
02/27/2011	17:20:20	391	8.2	13.10	275.8			
02/27/2011	17:22:20	418	8.2	13.06	292.2			
02/27/2011	17:24:20	424	8.2	13.32	308.7			
02/27/2011	17:26:20	254	6.3	12.64	324.8			
02/27/2011	17:27:11					End Cement Slurry		
02/27/2011	17:27:11	261	6.3	12.94	330.2			
02/27/2011	17:27:14					Drop 1st Stage Plug		
02/27/2011	17:27:14	258	6.3	12.97	330.5			
02/27/2011	17:28:20	261	6.4	13.02	337.5			
02/27/2011	17:34:20	62	4.1	9.04	360.2			
02/27/2011	17:36:20	135	5.8	8.82	368.6			
02/27/2011	17:37:19					365bbls Fersh Water		
02/27/2011	17:37:19	139	6.0	8.77	374.4			
02/27/2011	17:38:20	192	6.6	8.76	380.6			
02/27/2011	17:40:20	208	7.6	8.63	395.6			
02/27/2011	17:42:20	218	7.9	8.62	411.0			
02/27/2011	17:42:50					Reset Total, Vol = 414.97 bbl		
02/27/2011	17:42:50	230	7.9	8.64	415.0			
02/27/2011	17:44:20	234	7.9	8.64	426.8			
02/27/2011	17:46:20	234	7.9	8.65	442.7			

Well			Field		Job Start	Customer	Job Number
RGU 344-24-198			RYAN GULCH		Feb/27/2011	WILLIAMS	B708-00372
Date	Time 24-hr clock	Treating Pressure PSI	Flow Rate B/M	Density LB/G	Volume BBL	Message	
02/27/2011	17:48:20	229	7.9	8.65	458.5		
02/27/2011	17:50:20	237	7.9	8.65	474.4		
02/27/2011	17:52:20	236	7.9	8.65	490.2		
02/27/2011	17:54:20	46	3.4	8.65	498.7		
02/27/2011	17:56:20	58	3.3	8.65	505.4		
02/27/2011	17:58:20	85	3.3	8.65	512.0		
02/27/2011	18:00:20	383	7.9	8.65	524.8		
02/27/2011	18:02:20	446	7.9	8.65	540.6		
02/27/2011	18:04:20	503	7.9	8.65	556.4		
02/27/2011	18:06:20	583	7.9	8.65	572.2		
02/27/2011	18:08:20	619	7.9	8.65	588.0		
02/27/2011	18:10:20	680	7.9	8.65	603.8		
02/27/2011	18:12:20	758	7.9	8.64	619.5		
02/27/2011	18:14:20	813	7.9	8.63	635.3		
02/27/2011	18:16:20	879	7.9	8.63	651.0		
02/27/2011	18:18:20	780	4.3	8.61	665.7		
02/27/2011	18:20:20	775	4.3	8.63	674.2		
02/27/2011	18:22:20	723	2.2	8.63	679.2		
02/27/2011	18:24:20	758	2.2	8.64	683.7		
02/27/2011	18:26:20	870	2.1	8.64	688.2		
02/27/2011	18:28:01					Bump 1st Stage bPlug	
02/27/2011	18:28:01					Bump To 1300psi	
02/27/2011	18:28:01	1291	0.0	8.64	688.8		
02/27/2011	18:28:20	1296	0.0	8.64	688.8		
02/27/2011	18:30:20	-11	0.0	8.64	688.8		
02/27/2011	18:32:20	-8	0.0	8.64	688.8		
02/27/2011	18:34:20	-7	0.0	8.64	688.8		
02/27/2011	18:35:32					Drop Bomb	
02/27/2011	18:35:32					Wait 10min	
02/27/2011	18:35:32	-7	0.0	8.64	688.8		
02/27/2011	18:36:20	-7	0.0	8.64	688.8		
02/27/2011	18:38:20	-7	0.0	8.64	688.8		
02/27/2011	18:40:20	-8	0.0	8.64	688.8		
02/27/2011	18:42:20	-7	0.0	8.64	688.8		
02/27/2011	18:44:20	-8	0.0	8.64	688.8		
02/27/2011	18:46:20	-5	0.0	8.64	688.8		
02/27/2011	18:48:20	202	2.0	8.64	691.2		
02/27/2011	18:50:20	200	2.0	8.64	695.1		
02/27/2011	18:52:20	170	0.2	8.64	699.0		
02/27/2011	18:54:20	-5	0.0	8.64	699.0		
02/27/2011	18:56:20	-9	0.0	8.64	699.0		
02/27/2011	18:58:20	-11	0.0	8.64	699.0		
02/27/2011	19:00:20	15	0.0	8.64	699.0		
02/27/2011	19:02:20	-11	0.0	8.64	699.0		
02/27/2011	19:03:06					Open DV	
02/27/2011	19:03:06	-11	0.0	8.64	699.0		
02/27/2011	19:03:08					Wait 4 hrs	
02/27/2011	19:03:08	-11	0.0	8.64	699.0		
02/27/2011	19:04:20	-11	0.0	8.64	699.0		
02/27/2011	21:47:18					Start 2nd Stage	
02/27/2011	21:47:18	-5	0.0	8.65	699.0		
02/27/2011	21:47:33					Pressure Test Lines	
02/27/2011	21:47:33	-5	0.0	8.65	699.0		
02/27/2011	21:47:34					Test To 500&3000psi	
02/27/2011	21:47:34	-5	0.0	8.65	699.0		

Well			Field		Job Start	Customer		Job Number
RGU 344-24-198			RYAN GULCH		Feb/27/2011	WILLIAMS		B708-00372
Date	Time 24-hr clock	Treating Pressure PSI	Flow Rate B/M	Density LB/G	Volume BBL	Message		
02/27/2011	21:48:20	-5	0.0	8.65	699.0			
02/27/2011	21:50:20	42	2.0	8.65	699.0			
02/27/2011	21:52:20	8	0.0	8.65	700.6			
02/27/2011	21:54:20	1629	0.0	8.65	700.7			
02/27/2011	21:56:20	31	1.9	8.64	700.8			
02/27/2011	21:57:38					Start Pumping Spacer		
02/27/2011	21:57:38	120	4.6	8.64	704.9			
02/27/2011	21:57:39					40bbls Fresh H2o		
02/27/2011	21:57:39	117	4.6	8.64	705.0			
02/27/2011	21:58:20	120	4.6	8.64	708.1			
02/27/2011	22:00:20	201	6.4	8.64	718.7			
02/27/2011	22:02:20	213	6.4	8.63	731.4			
02/27/2011	22:03:57					End Spacer		
02/27/2011	22:03:57	54	1.1	8.64	739.6			
02/27/2011	22:04:20	89	3.0	9.73	740.2			
02/27/2011	22:04:37					Start Cement Slurry		
02/27/2011	22:04:37	121	3.3	12.65	741.1			
02/27/2011	22:04:38					375bbls @ 12.8ppg		
02/27/2011	22:04:38					Good Returns		
02/27/2011	22:04:38					Take Wet&Dry Sample		
02/27/2011	22:04:38					Sample= 12.8ppg		
02/27/2011	22:04:38	134	3.3	12.64	741.1			
02/27/2011	22:06:20	314	6.5	12.78	750.5			
02/27/2011	22:08:20	411	8.4	13.04	765.7			
02/27/2011	22:10:20	391	8.4	13.08	782.5			
02/27/2011	22:12:20	385	8.4	13.11	799.2			
02/27/2011	22:14:20	389	8.4	13.10	816.0			
02/27/2011	22:16:20	415	8.4	13.08	832.7			
02/27/2011	22:18:20	397	8.4	13.05	849.4			
02/27/2011	22:20:20	387	8.4	12.89	866.2			
02/27/2011	22:22:20	248	6.6	12.64	882.9			
02/27/2011	22:24:20	266	6.4	13.42	895.9			
02/27/2011	22:26:20	401	8.3	13.18	909.3			
02/27/2011	22:28:20	407	8.3	13.13	926.0			
02/27/2011	22:30:20	387	8.3	13.09	942.6			
02/27/2011	22:32:20	382	8.3	13.07	959.3			
02/27/2011	22:34:20	394	8.3	13.00	975.9			
02/27/2011	22:36:20	395	8.3	12.97	992.6			
02/27/2011	22:38:20	403	8.3	12.93	1009.3			
02/27/2011	22:40:20	393	8.3	12.92	1025.9			
02/27/2011	22:42:20	384	8.3	12.89	1042.5			
02/27/2011	22:44:20	395	8.3	13.23	1059.2			
02/27/2011	22:46:20	373	8.2	13.04	1075.7			
02/27/2011	22:48:20	278	6.4	13.26	1090.0			
02/27/2011	22:50:20	269	6.4	12.98	1102.9			
02/27/2011	22:52:20	284	6.4	13.24	1115.7			
02/27/2011	22:54:03					End Cement Slurry		
02/27/2011	22:54:03	283	6.4	13.21	1126.7			
02/27/2011	22:54:04					Drop 2nd Satage Plug		
02/27/2011	22:54:04	293	6.4	13.21	1126.8			
02/27/2011	22:54:20	296	6.4	13.26	1128.6			
02/27/2011	22:56:20	302	6.4	13.50	1141.4			
02/27/2011	22:58:20	266	6.4	13.18	1154.2			
02/27/2011	23:00:20	-14	0.6	14.10	1179.6			
02/27/2011	23:02:20	-13	0.0	10.32	1180.2			

Well			Field		Job Start	Customer	Job Number
RGU 344-24-198			RYAN GULCH		Feb/27/2011	WILLIAMS	B708-00372
Date	Time 24-hr clock	Treating Pressure PSI	Flow Rate B/M	Density LB/G	Volume BBL	Message	
02/27/2011	23:04:20	-7	0.0	9.62	1180.2		
02/27/2011	23:06:20	94	4.3	9.12	1183.3		
02/27/2011	23:06:25					Start Displacement	
02/27/2011	23:06:25	105	4.9	9.10	1183.7		
02/27/2011	23:06:26					142bbls Fresh H2o	
02/27/2011	23:06:26					Good Retrurns	
02/27/2011	23:06:26	118	4.9	9.09	1183.8		
02/27/2011	23:08:20	201	6.0	8.87	1195.1		
02/27/2011	23:10:20	237	6.0	8.65	1207.1		
02/27/2011	23:12:20	279	6.0	8.65	1219.2		
02/27/2011	23:14:20	212	4.1	8.65	1228.8		
02/27/2011	23:16:20	239	4.1	8.65	1237.0		
02/27/2011	23:18:20	255	4.1	8.65	1245.3		
02/27/2011	23:20:20	280	4.1	8.65	1253.6		
02/27/2011	23:22:20	253	2.1	8.65	1260.9		
02/27/2011	23:24:20	265	2.1	8.65	1265.1		
02/27/2011	23:26:20	280	2.1	8.65	1269.3		
02/27/2011	23:28:20	287	2.1	8.65	1273.5		
02/27/2011	23:30:20	302	2.1	8.65	1277.7		
02/27/2011	23:32:20	321	2.1	8.65	1281.9		
02/27/2011	23:34:20	332	2.1	8.65	1286.1		
02/27/2011	23:36:20	341	2.1	8.65	1290.3		
02/27/2011	23:38:20	362	2.1	8.65	1294.5		
02/27/2011	23:40:20	375	2.1	8.65	1298.7		
02/27/2011	23:42:20	377	2.1	8.65	1302.9		
02/27/2011	23:44:20	362	1.0	8.65	1305.5		
02/27/2011	23:46:20	398	1.0	8.65	1307.4		
02/27/2011	23:48:20	404	1.0	8.65	1309.4		
02/27/2011	23:50:20	409	1.0	8.65	1311.3		
02/27/2011	23:52:20	388	1.0	8.65	1313.2		
02/27/2011	23:54:20	395	1.0	8.65	1315.1		
02/27/2011	23:56:20	401	1.0	8.65	1317.1		
02/27/2011	23:58:20	484	1.0	8.65	1319.0		
02/28/2011	00:00:20	433	2.0	8.65	1323.0		
02/28/2011	00:02:20	1434	0.0	8.65	1326.1		
02/28/2011	00:04:05					Bunp Cloising Plug	
02/28/2011	00:04:05	1429	0.0	8.65	1326.1		
02/28/2011	00:04:19					Bunp To 1400psi	
02/28/2011	00:04:19	1429	0.0	8.65	1326.1		
02/28/2011	00:04:20	1429	0.0	8.65	1326.1		
02/28/2011	00:06:20	-0	0.0	8.65	1326.1		
02/28/2011	00:06:41					End Displacement	
02/28/2011	00:06:41	3	0.0	8.65	1326.1		
02/28/2011	00:06:44					11bbls Top Out	
02/28/2011	00:06:44	2	0.0	8.65	1326.1		
02/28/2011	03:17:51					Start Top Out	
02/28/2011	03:17:51					Pumped 11bbls @ 15.8ppg	
02/28/2011	03:17:51	-1	0.0	8.64	1326.1		
02/28/2011	03:18:20	-1	0.0	8.63	1326.1		
02/28/2011	03:20:20	-6	0.0	8.63	1326.1		
02/28/2011	03:22:20	-6	0.0	8.63	1326.1		
02/28/2011	03:24:20	68	2.9	15.55	1329.8		
02/28/2011	03:26:20	69	2.9	15.77	1335.7		
02/28/2011	03:28:20	-12	0.0	16.35	1337.5		
02/28/2011	03:30:20	-12	0.0	16.39	1337.5		

Well			Field		Job Start	Customer		Job Number
RGU 344-24-198			RYAN GULCH		Feb/27/2011	WILLIAMS		B708-00372
Date	Time 24-hr clock	Treating Pressure PSI	Flow Rate B/M	Density LB/G	Volume BBL	Message		
02/28/2011	03:32:20	-13	0.0	16.43	1337.5			
02/28/2011	03:34:20	-13	0.0	16.47	1337.5			
02/28/2011	03:36:20	-13	0.0	16.52	1337.5			
02/28/2011	03:38:20	-13	0.0	16.56	1337.5			
02/28/2011	03:40:20	-13	0.0	16.59	1337.5			
02/28/2011	03:42:20	-13	0.0	16.62	1337.5			
02/28/2011	03:44:20	-14	0.0	16.65	1337.5			
02/28/2011	03:46:20	66	2.5	16.46	1341.1			
02/28/2011	03:48:20	31	2.5	9.03	1345.7			
02/28/2011	03:50:20	30	2.6	8.98	1350.9			
02/28/2011	03:52:20	-13	0.1	8.88	1353.6			
02/28/2011	03:53:24					End Job		

Post Job Summary

Average Pump Rates, bbl/min					Volume of Fluid Injected, bbl				
Slurry 5.0	N2	Mud 0.0	Maximum Rate 25.0		Total Slurry 1353.7	Mud 0.0	Spacer 91.2	N2	
Treating Pressure Summary, psi					Breakdown Fluid				
Maximum 3627	Final 156	Average 323	Bump Plug to	Breakdown	Type		Volume	Density	
Avg. N2 Percent		Designed Slurry Volume 670.0 bbl		Displacement 142.4 bbl		Mix Water Temp 55 degF		Cement Circulated to Surface? <input checked="" type="checkbox"/>	Volume
								Washed Thru Perfs <input type="checkbox"/>	
Customer or Authorized Representative ANDREW BRUNK				Schlumberger Supervisor JASON CRICK				Circulation Lost <input type="checkbox"/>	Job Completed <input checked="" type="checkbox"/>
								-	