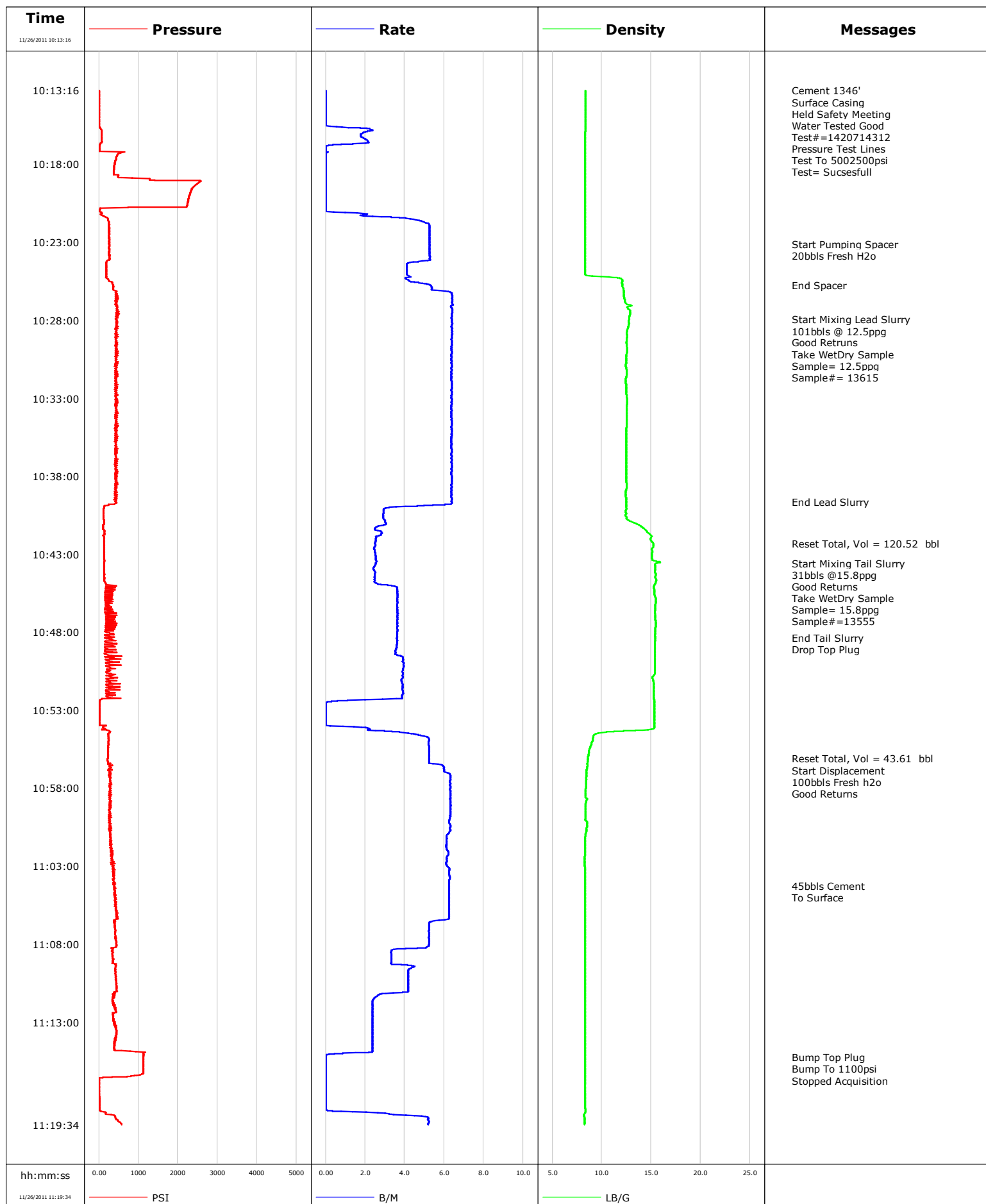


Well FEE 19-10B K19
Field S PARACHUTE
Engineer
Country United States

Client ENCANA
SIR No. BUNM-00362
Job Type SURFACE
Job Date 11-26-2011

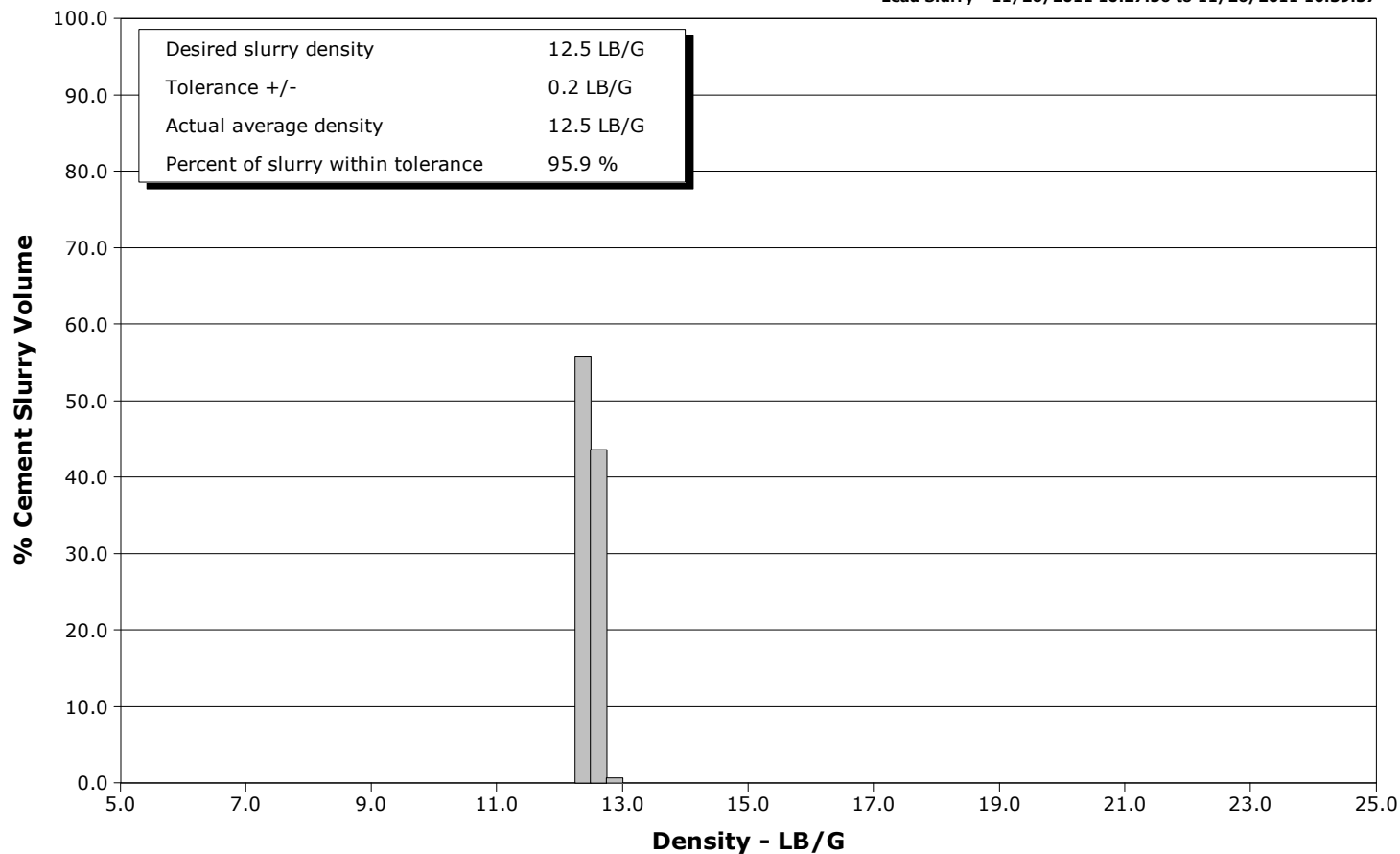


Schlumberger Cementing Qa/Qc Density Report

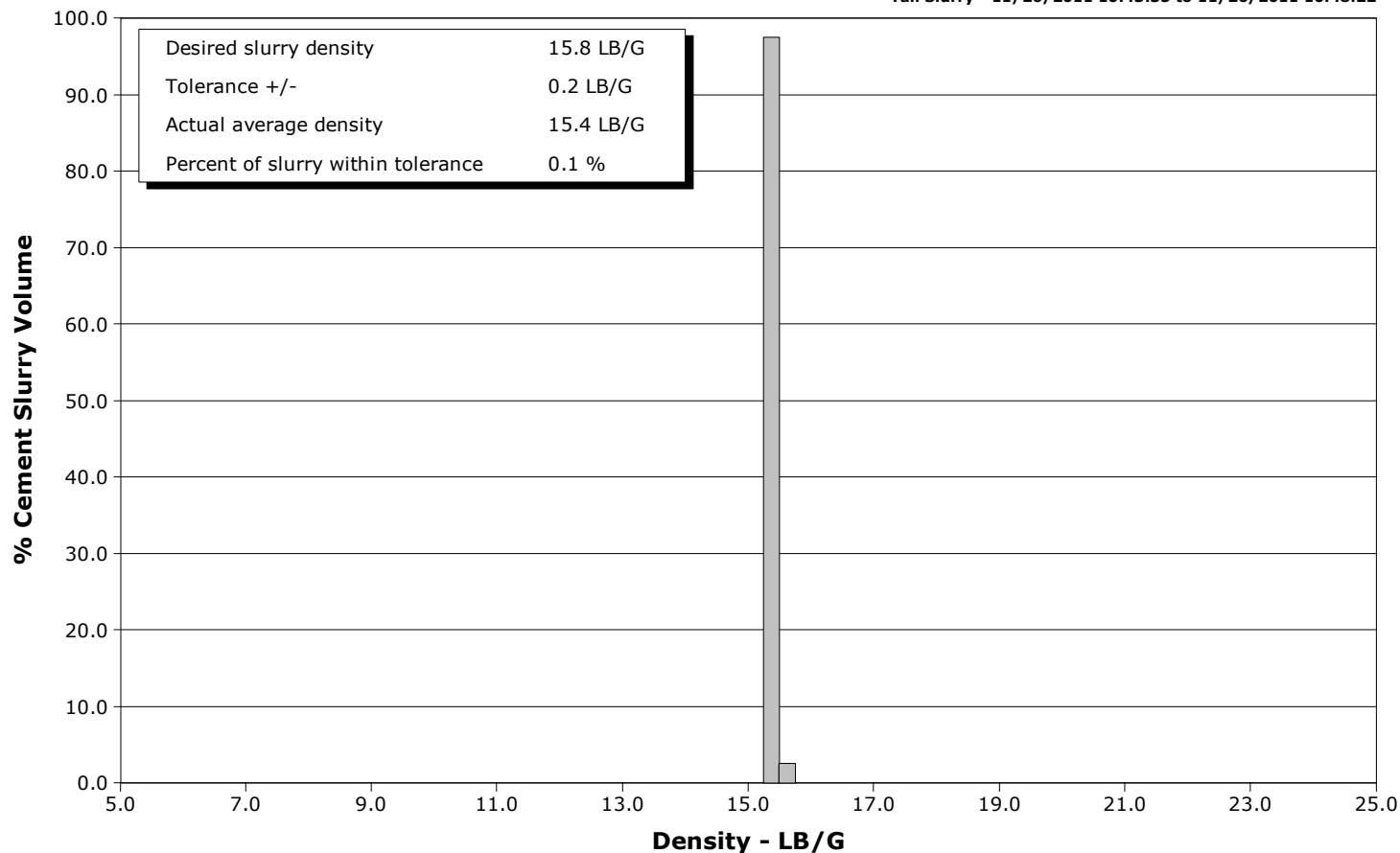
Well FEE 19-10B K19
Field S PARACHUTE
Engineer
Country United States

Client ENCANA
SIR No. BUNM-00362
Job Type SURFACE
Job Date 11-26-2011

Lead Slurry - 11/26/2011 10:27:56 to 11/26/2011 10:39:37



Tail Slurry - 11/26/2011 10:43:35 to 11/26/2011 10:48:22





Cementing Service Report

				Customer ENCANA			Job Number BUNM-00362								
Well FEE 19-10B K19			Location (legal) HUNTER NESA			Schlumberger Location GCO			Job Start Nov/26/2011						
Field S PARACHUTE		Formation Name/Type			Deviation		Bit Size		Well MD		Well TVD				
County GARFIELD		State/Province Colorado			BHP		BHST		BHCT		Pore Press. Gradient				
Well Master 0631286871		API/UWI													
Rig Name NABORS M-13		Drilled For Gas		Service Via Land		Casing/Liner									
Offshore Zone		Well Class New		Well Type		Depth,		Size,		Weight,		Grade		Thread	
Drilling Fluid Type			Max. Density		Plastic Viscosity		Tubing/Drill Pipe								
Service Line Cementing		Job Type SURFACE				Depth,		Size,		Weight,		Grade		Thread	
Max. Allowed Tub. Press		Max. Allowed Ann. Press		WH Connection Single Cement head		Perforations/Open Hole									
Service Instructions 270skts 12.5ppg lead 2.11ft3/sk 150skts 15.8ppg tail 1.17ft3/sk						Top,		Bottom,				No. of Shots		Total Interval	
						Treat Down Casing		Displacement 100.0 bbl		Packer Type		Packer Depth			
						Tubing Vol.		Casing Vol. 104.0 bbl		Annular Vol. 75.0 bbl		Openhole Vol. 179.0 bbl			
Casing/Tubing Secured <input checked="" type="checkbox"/>		1 Hole Vol. Circulated prior to Cement <input checked="" type="checkbox"/>				Casing Tools				Squeeze Job					
Lift Pressure 666 psi				Shoe Type Guide				Squeeze Type							
Pipe Rotated <input type="checkbox"/>		Pipe Reciprocated <input type="checkbox"/>		Shoe Depth 1346.0 ft				Tool Type							
No. Centralizers		Top Plugs 1		Bottom Plugs		Stage Tool Type				Tool Depth					
Cement Head Type				Stage Tool Depth				Tail Pipe Size							
Job Scheduled For Nov/26/2011		Arrived on Location Nov/26/2011		Leave Location Nov/26/2011		Collar Type Diff-Fill				Tail Pipe Depth					
						Collar Depth 1300.0 ft				Sqz. Total Vol.					
Date	Time 24-hr clock	Treating Pressure PSI	Flow Rate B/M	Density LB/G	Volume BBL	Message									
11/26/2011	08:52:42					Started Acquisition									
11/26/2011	10:13:16					Cement 1346'									
11/26/2011	10:13:16					Surface Casing									
11/26/2011	10:13:16					Held Safety Meeting									
11/26/2011	10:13:16					Water Tested Good									
11/26/2011	10:13:16					Test#=1420714312									
11/26/2011	10:13:16	4	0.0	8.33	0.0										
11/26/2011	10:13:20					Pressure Test Lines									
11/26/2011	10:13:20	4	0.0	8.34	0.0										
11/26/2011	10:13:21					Test To 5002500psi									
11/26/2011	10:13:21	4	0.0	8.34	0.0										
11/26/2011	10:13:22					Test= Sucsesfull									
11/26/2011	10:13:22	4	0.0	8.34	0.0										
11/26/2011	10:13:42	4	0.0	8.34	0.0										
11/26/2011	10:14:12	2	0.0	8.34	0.0										
11/26/2011	10:14:42	2	0.0	8.34	0.0										
11/26/2011	10:15:12	2	0.0	8.33	0.0										
11/26/2011	10:15:42	35	1.8	8.34	0.1										
11/26/2011	10:16:12	71	1.8	8.33	1.1										
11/26/2011	10:16:42	43	1.4	8.32	2.1										
11/26/2011	10:17:12	16	0.0	8.33	2.2										

Well			Field		Job Start	Customer		Job Number
FEE 19-10B K19			S PARACHUTE		Nov/26/2011	ENCANA		BUNM-00362
Date	Time 24-hr clock	Treating Pressure PSI	Flow Rate B/M	Density LB/G	Volume BBL	Message		
11/26/2011	10:18:12	386	0.0	8.33	2.2			
11/26/2011	10:18:42	498	0.0	8.33	2.2			
11/26/2011	10:19:12	2530	0.0	8.33	2.2			
11/26/2011	10:19:42	2333	0.0	8.33	2.2			
11/26/2011	10:20:12	2268	0.0	8.33	2.2			
11/26/2011	10:20:42	2225	0.0	8.33	2.2			
11/26/2011	10:21:12	83	2.1	8.33	2.4			
11/26/2011	10:21:42	253	4.9	8.33	4.1			
11/26/2011	10:22:12	262	5.3	8.32	6.7			
11/26/2011	10:22:42	262	5.3	8.32	9.4			
11/26/2011	10:23:08					Start Pumping Spacer		
11/26/2011	10:23:08	264	5.3	8.33	11.6			
11/26/2011	10:23:09					20bbls Fresh H2o		
11/26/2011	10:23:09	264	5.3	8.33	11.7			
11/26/2011	10:23:12	266	5.3	8.33	12.0			
11/26/2011	10:23:42	266	5.3	8.32	14.6			
11/26/2011	10:24:12	213	5.2	8.32	17.3			
11/26/2011	10:24:42	189	4.1	8.32	19.4			
11/26/2011	10:25:12	190	4.3	9.94	21.4			
11/26/2011	10:25:42	343	5.1	12.09	23.6			
11/26/2011	10:25:44					End Spacer		
11/26/2011	10:25:44	364	5.2	12.09	23.8			
11/26/2011	10:26:12	445	6.3	12.24	26.4			
11/26/2011	10:26:42	467	6.4	12.32	29.6			
11/26/2011	10:27:12	463	6.4	12.59	32.8			
11/26/2011	10:27:42	492	6.4	12.83	36.0			
11/26/2011	10:27:56					Start Mixing Lead Slurry		
11/26/2011	10:27:56	426	6.4	12.76	37.4			
11/26/2011	10:27:57					101bbls @ 12.5ppg		
11/26/2011	10:27:57					Good Retruns		
11/26/2011	10:27:57					Take WetDry Sample		
11/26/2011	10:27:57					Sample= 12.5ppg		
11/26/2011	10:27:57					Sample#= 13615		
11/26/2011	10:27:57	442	6.4	12.76	37.6			
11/26/2011	10:28:12	443	6.4	12.75	39.2			
11/26/2011	10:28:42	440	6.4	12.57	42.3			
11/26/2011	10:29:12	425	6.4	12.53	45.5			
11/26/2011	10:29:42	463	6.4	12.55	48.7			
11/26/2011	10:30:12	417	6.4	12.51	51.9			
11/26/2011	10:30:42	446	6.4	12.46	55.1			
11/26/2011	10:31:12	452	6.4	12.52	58.3			
11/26/2011	10:31:42	453	6.4	12.45	61.5			
11/26/2011	10:32:12	418	6.4	12.47	64.7			
11/26/2011	10:32:42	428	6.4	12.48	67.8			
11/26/2011	10:33:12	472	6.4	12.56	71.0			
11/26/2011	10:33:42	451	6.4	12.54	74.2			
11/26/2011	10:34:12	413	6.4	12.52	77.4			
11/26/2011	10:34:42	418	6.4	12.50	80.6			
11/26/2011	10:35:12	425	6.4	12.47	83.8			
11/26/2011	10:35:42	459	6.4	12.47	86.9			
11/26/2011	10:36:12	426	6.4	12.47	90.1			
11/26/2011	10:36:42	425	6.4	12.47	93.3			
11/26/2011	10:37:12	463	6.4	12.48	96.5			
11/26/2011	10:37:42	417	6.4	12.49	99.7			

Well			Field		Job Start	Customer	Job Number
FEE 19-10B K19			S PARACHUTE		Nov/26/2011	ENCANA	BUNM-00362
Date	Time 24-hr clock	Treating Pressure PSI	Flow Rate B/M	Density LB/G	Volume BBL	Message	
11/26/2011	10:38:42	405	6.4	12.53	106.1		
11/26/2011	10:39:12	461	6.4	12.44	109.2		
11/26/2011	10:39:37					End Lead Slurry	
11/26/2011	10:39:37	407	6.4	12.47	111.9		
11/26/2011	10:39:42	430	6.4	12.47	112.4		
11/26/2011	10:40:12	120	2.9	12.43	114.6		
11/26/2011	10:40:42	121	2.9	12.50	116.1		
11/26/2011	10:41:12	104	2.7	13.95	117.6		
11/26/2011	10:41:42	143	2.8	14.84	118.9		
11/26/2011	10:42:12	130	2.5	15.03	120.2		
11/26/2011	10:42:19					Reset Total, Vol = 120.52 bbl	
11/26/2011	10:42:19	128	2.5	15.22	120.5		
11/26/2011	10:42:42	131	2.5	15.02	121.5		
11/26/2011	10:43:12	130	2.5	15.07	122.7		
11/26/2011	10:43:35					Start Mixing Tail Slurry	
11/26/2011	10:43:35	132	2.5	15.63	123.7		
11/26/2011	10:43:40					31bbls @15.8ppg	
11/26/2011	10:43:40					Good Returns	
11/26/2011	10:43:40					Take WetDry Sample	
11/26/2011	10:43:40	134	2.5	15.39	123.9		
11/26/2011	10:43:41					Sample= 15.8ppg	
11/26/2011	10:43:41					Sample#=13555	
11/26/2011	10:43:41	134	2.5	15.39	124.0		
11/26/2011	10:43:42	134	2.5	15.39	124.0		
11/26/2011	10:44:12	132	2.5	15.43	125.2		
11/26/2011	10:44:42	135	2.5	15.51	126.5		
11/26/2011	10:45:12	163	3.6	15.29	128.0		
11/26/2011	10:45:42	153	3.7	15.40	129.8		
11/26/2011	10:46:12	161	3.6	15.45	131.6		
11/26/2011	10:46:42	158	3.6	15.39	133.4		
11/26/2011	10:47:12	322	3.6	15.43	135.2		
11/26/2011	10:47:42	421	3.6	15.44	137.0		
11/26/2011	10:48:12	152	3.6	15.39	138.9		
11/26/2011	10:48:22					End Tail Slurry	
11/26/2011	10:48:22	157	3.6	15.39	139.5		
11/26/2011	10:48:25					Drop Top Plug	
11/26/2011	10:48:25	194	3.6	15.40	139.6		
11/26/2011	10:48:42	341	3.6	15.39	140.7		
11/26/2011	10:49:12	148	3.5	15.38	142.5		
11/26/2011	10:49:42	383	3.9	15.37	144.3		
11/26/2011	10:50:12	213	3.9	15.36	146.3		
11/26/2011	10:50:42	261	3.9	15.35	148.2		
11/26/2011	10:51:12	283	3.9	15.24	150.2		
11/26/2011	10:51:42	528	3.9	15.27	152.1		
11/26/2011	10:52:12	282	3.9	15.26	154.0		
11/26/2011	10:52:42	23	0.0	15.34	154.6		
11/26/2011	10:53:12	23	0.0	15.33	154.6		
11/26/2011	10:53:42	22	0.0	15.32	154.6		
11/26/2011	10:54:12	162	2.2	15.25	154.9		
11/26/2011	10:54:42	236	5.1	9.17	156.8		
11/26/2011	10:55:12	245	5.2	8.94	159.4		
11/26/2011	10:55:42	229	5.2	8.71	162.0		
11/26/2011	10:56:06					Reset Total, Vol = 43.61 bbl	
11/26/2011	10:56:06	221	5.2	8.59	164.1		

Well			Field		Job Start	Customer		Job Number
FEE 19-10B K19			S PARACHUTE		Nov/26/2011	ENCANA		BUNM-00362
Date	Time 24-hr clock	Treating Pressure PSI	Flow Rate B/M	Density LB/G	Volume BBL	Message		
11/26/2011	10:56:10	218	5.2	8.60	164.5			
11/26/2011	10:56:11					100bbls Fresh h2o		
11/26/2011	10:56:11					Good Returns		
11/26/2011	10:56:11	218	5.2	8.58	164.6			
11/26/2011	10:56:12	224	5.2	8.58	164.7			
11/26/2011	10:56:42	299	6.0	8.52	167.4			
11/26/2011	10:57:12	285	6.3	8.44	170.5			
11/26/2011	10:57:42	273	6.3	8.40	173.6			
11/26/2011	10:58:12	264	6.3	8.37	176.8			
11/26/2011	10:58:42	290	6.3	8.50	180.0			
11/26/2011	10:59:12	296	6.3	8.37	183.1			
11/26/2011	10:59:42	263	6.3	8.35	186.3			
11/26/2011	11:00:12	257	6.2	8.50	189.4			
11/26/2011	11:00:42	312	6.3	8.44	192.6			
11/26/2011	11:01:12	298	6.1	8.33	195.7			
11/26/2011	11:01:42	320	6.1	8.29	198.7			
11/26/2011	11:02:12	320	6.2	8.30	201.8			
11/26/2011	11:02:42	342	6.1	8.28	204.9			
11/26/2011	11:03:12	366	6.3	8.33	207.9			
11/26/2011	11:03:42	383	6.3	8.32	211.1			
11/26/2011	11:04:12	383	6.2	8.32	214.2			
11/26/2011	11:04:16					45bbls Cement		
11/26/2011	11:04:16	380	6.2	8.32	214.6			
11/26/2011	11:04:26					To Surface		
11/26/2011	11:04:26	420	6.2	8.32	215.6			
11/26/2011	11:04:42	390	6.2	8.32	217.3			
11/26/2011	11:05:12	404	6.2	8.32	220.4			
11/26/2011	11:05:42	419	6.2	8.32	223.5			
11/26/2011	11:06:12	432	6.2	8.32	226.7			
11/26/2011	11:06:42	396	5.2	8.32	229.6			
11/26/2011	11:07:12	414	5.2	8.32	232.2			
11/26/2011	11:07:42	437	5.2	8.32	234.8			
11/26/2011	11:08:12	423	5.1	8.32	237.4			
11/26/2011	11:08:42	338	3.3	8.32	239.2			
11/26/2011	11:09:12	348	3.3	8.32	240.9			
11/26/2011	11:09:42	416	4.2	8.32	242.9			
11/26/2011	11:10:12	430	4.2	8.33	245.0			
11/26/2011	11:10:42	445	4.2	8.33	247.1			
11/26/2011	11:11:12	355	2.8	8.33	249.1			
11/26/2011	11:11:42	365	2.4	8.33	250.3			
11/26/2011	11:12:12	428	2.4	8.33	251.5			
11/26/2011	11:12:42	362	2.4	8.33	252.7			
11/26/2011	11:13:12	431	2.4	8.33	253.9			
11/26/2011	11:13:42	441	2.4	8.33	255.1			
11/26/2011	11:14:12	394	2.4	8.33	256.3			
11/26/2011	11:14:42	387	2.4	8.33	257.4			
11/26/2011	11:15:12	1126	0.0	8.33	258.1			
11/26/2011	11:15:14					Bump Top Plug		
11/26/2011	11:15:14	1123	0.0	8.33	258.1			
11/26/2011	11:15:15					Bump To 1100psi		
11/26/2011	11:15:15	1124	0.0	8.33	258.1			
11/26/2011	11:15:42	1122	0.0	8.33	258.1			
11/26/2011	11:16:12	1118	0.0	8.33	258.1			
11/26/2011	11:16:42	8	0.0	8.33	258.1			

Well			Field		Job Start	Customer		Job Number
FEE 19-10B K19			S PARACHUTE		Nov/26/2011	ENCANA		BUNM-00362
Date	Time 24-hr clock	Treating Pressure PSI	Flow Rate B/M	Density LB/G	Volume BBL	Message		
11/26/2011	11:17:42	11	0.0	8.33	258.1			
11/26/2011	11:18:12	15	0.0	8.33	258.1			
11/26/2011	11:18:42	60	0.3	8.34	258.1			
11/26/2011	11:19:12	445	5.2	8.26	260.0			

Post Job Summary

Average Pump Rates, bbl/min					Volume of Fluid Injected, bbl				
Slurry 4.7	N2	Mud 0.0	Maximum Rate 6.4		Total Slurry 261.9	Mud 0.0	Spacer 23.8	N2	
Treating Pressure Summary, psi					Breakdown Fluid				
Maximum 2593	Final 601	Average 368	Bump Plug to 1100	Breakdown	Type		Volume		Density
Avg. N2 Percent		Designed Slurry Volume 133.0 bbl		Displacement 118.5 bbl	Mix Water Temp 69 degF	Cement Circulated to Surface? <input checked="" type="checkbox"/>		Volume 45.0 bbl	
						Washed Thru Perfs <input type="checkbox"/>		To	
Customer or Authorized Representative				Schlumberger Supervisor			Circulation Lost <input type="checkbox"/>		Job Completed <input checked="" type="checkbox"/>
CHARLIE BROWN				JASON CRICK			-		-



Service Order #:	
Date:	Nov/26/2011
Operating Time:	0.0
Client Rep:	ENCANA
Schlumberger Engineer:	JASON CRICK
Schlumberger FSM:	

To be completed by Company Rep. Please answer Y (Yes) or N (No) and add any comments below.

4	Evaluation						
4a	Main job objective achieved with no consequential non-productive time	10	yes	<input type="checkbox"/>	no	<input checked="" type="checkbox"/>	0
Sub-total							0%

Comments: (Please include a brief explanation for a "NO" response and summarize any innovations attempted on this well.)

Client:	Schlumberger:
Client Signature:	Schlumberger Signature: