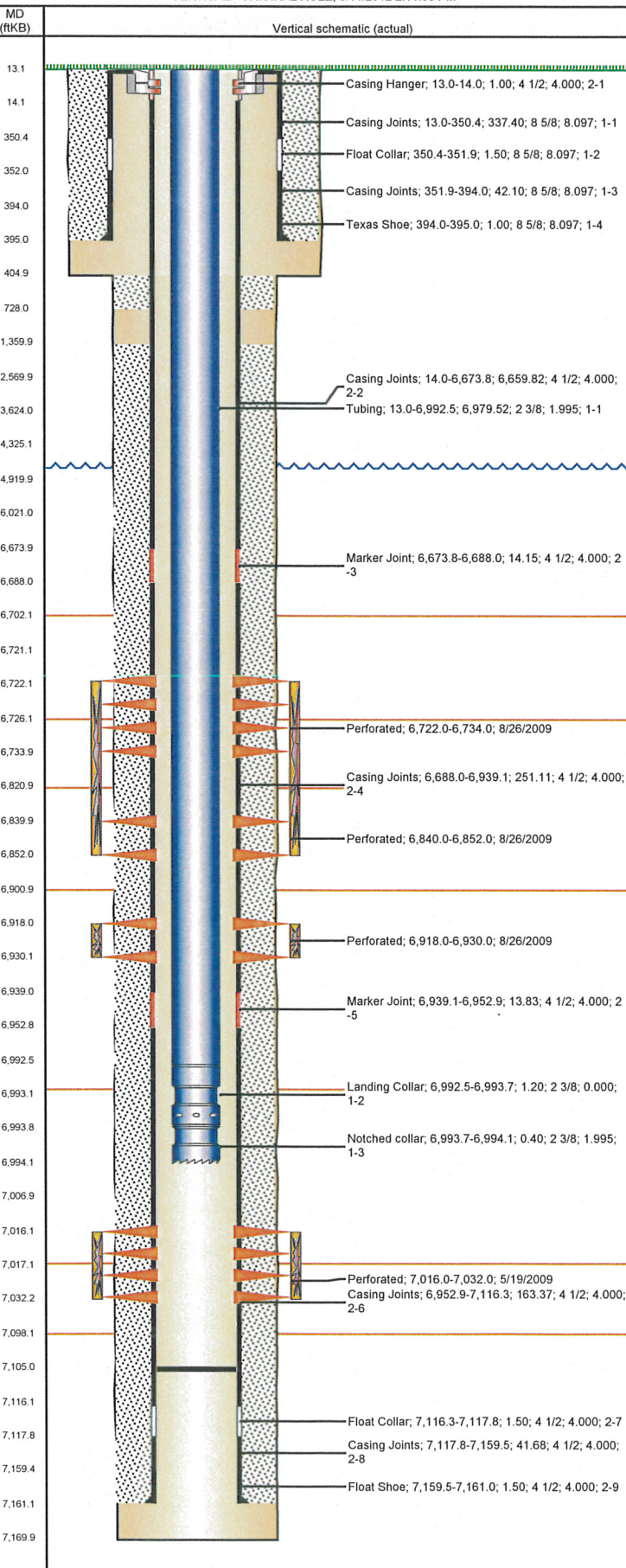


Well Name: CONAGRA B30-31D

VERTICAL - ORIGINAL HOLE, 6/11/2012 2:11:38 PM



Well Header

API 05-123-26997	Business Unit WATTENBERG	District 15	Well Config VERTICAL
Original KB Elevation (ft) 4,697.00	KB - GL / MSL (ftKB) 13.00	Spud Date 5/7/2009	P & A Date

Comment

Directions To Well

WCR 49, SOUTH 0.4THS MILE SOUTH OF WCR 54, EAST 200' YARDS

Surface Location (Congressional)

Quarter 1	Quarter 2	Quarter 3 SW	Quarter 4 NW	Section 30	Township 5 N	Range 64 W	Rng E/W...
-----------	-----------	-----------------	-----------------	---------------	-----------------	---------------	------------

Bottom Hole Location

North-South Distance (ft) 1,500.0	From N or S Line FNL	East-West Distance (ft) 75.0	From E or W Line FWL
--------------------------------------	-------------------------	---------------------------------	-------------------------

Plug Back Total Depths

Date	Depth (ftKB)	Method	Com
5/10/2009	7,125.0	CASING TALLY	
9/16/2009	7,105.0	TAG	C/O TO 7105' KB

Wellbore Sections

Section Des	Size (in)	Act Top (ftKB)	Act Btm (ftKB)
SURFACE	12 1/4	13.0	405.0
PRODUCTION	7 7/8	405.0	7,170.0

Zone Statuses

Zone Name	Status Date	Status	Job
CODELL	8/28/2009	PR	DRILLING/COMPLETION - ORIGINAL, 5/6/2009 13:30
NIOBRARA	8/28/2009	PR	DRILLING/COMPLETION - ORIGINAL, 5/6/2009 13:30

Casing Strings

Surface, 395.0ftKB

Casing Description	Run Date	OD (in)	Wt/Len (lb/ft)	Grade	Top (ftKB)	Set Depth...
Surface	5/7/2009	8 5/8	24.00	J-55	13.0	395.0

Production, 7,161.0ftKB

Casing Description	Run Date	OD (in)	Wt/Len (lb/ft)	Grade	Top (ftKB)	Set Depth...
Production	5/10/2009	4 1/2	11.60	M-80	13.0	7,161.0

Cement

Description	Top Depth (ftKB)	Bottom Depth (ftKB)
Surface Casing Cement	13.0	395.0
Production Casing Cement	1,360.0	7,161.0
Production Casing Cement	405.0	728.0

Tubing Components

Item Des	OD (in)	Wt (lb/ft)	Grade	Jts	Len (ft)	Btm (ftKB)	Btm (TVD) (ftKB)
Tubing	2 3/8	4.70	J-55	226	6,979.52	6,992.5	
Landing Collar	2 3/8	4.70	N-80		1.20	6,993.7	6,913.9
Notched collar	2 3/8	4.70	J-55		0.40	6,994.1	6,914.3

Perforation Data

Zone	Bnch/St g	Entered Shot Total	Top (ftKB)	Btm (ftKB)	Date
NIOBRARA, ORIGINAL HOLE	A	24	6,722.0	6,734.0	8/26/2009
NIOBRARA, ORIGINAL HOLE	B	24	6,840.0	6,852.0	8/26/2009
NIOBRARA, ORIGINAL HOLE	C	24	6,918.0	6,930.0	8/26/2009
CODELL, ORIGINAL HOLE		64	7,016.0	7,032.0	5/19/2009

Stimulations & Treatments

Date	Zone	Primary Job Type
8/25/2009	CODELL, ORIGINAL HOLE	DRILLING/COMPLETION - ORIGINAL
Technical Result	Tech Result Details	Tech Result Note
Success	According to Plan	

Comment

11 OF 64 PERFS OPEN, 738 NWB FRICTION, 328 PSI PERF FRICTION, AND 1278 PSI TOTAL FRICTION. BRAVO'S NEW BLENDER (ECHO'S OLD BLENDER REBUILT) HAD EARLY pH PROBE READING ISSUES. ALSO, CAT PUMP ISSUES IN THE 3.0 PPG SAND STAGE WERE FIXED. POST JOB ISIP = 3108 PSI, 5-MIN = 2354 PSI.