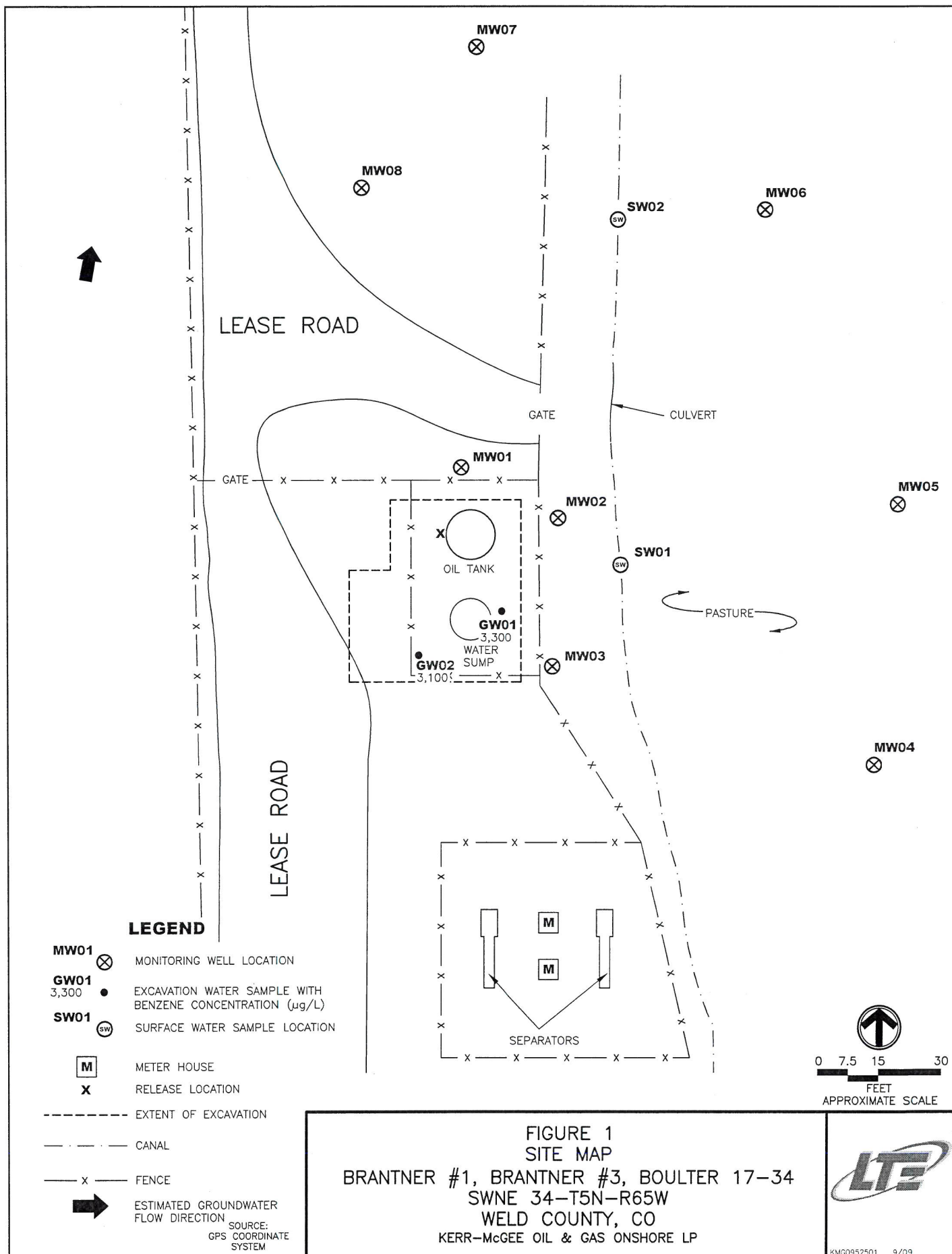


2011 ANNUAL PROJECT SUMMARY TABLE

Incident Date	Remediation No.	Well Name	API	Status	NFA Proposed	NFA Approved Date	2011 Site Summary (monitoring/remediation/ wells installed or destroyed)	Wells Sampled (Last Quarter) 2011	Wells Exceeding 5 ug/L Benzene (Last Quarter Sampled 2011)	Benzene Range (Last Quarter Sampled 2011)	POC Reached	2012 Recommendations	Well Reduction Request
7/17/2009	4856	Brantner #1, Brantner #3, Boulder 17-34	05-123-11019	Monitoring	NO	N/A	Quarterly groundwater monitoring since Sept-2009.	MW01-MW08	MW01-MW03	ND - 4,500	NO	Pending landowner approval, additional wells will be installed downgradient of MW07 in order to establish POC. Remediation alternatives are being evaluated. Quarterly groundwater and surface water monitoring will continue.	N/A



**TABLE 1**  
**GROUNDWATER ANALYTICAL AND FIELD RESULTS**  
**BRANTNER #1, BRANTNER #3, BOULTER 17-34**  
**WELD COUNTY, COLORADO**  
**KERR-McGEE OIL & GAS ONSHORE LP**

Well Name	Date	Benzene (ug/L)	Toluene (ug/L)	Ethylbenzene (ug/L)	Xylenes (ug/L)	Depth Water/ (Depth Product) (ft bgs)
GW01	07/20/2009	3300	3900	1100	2100	NM
GW02	08/03/2009	3100	4200	75	870	NM
MW01	09/25/2009	4100	12000	490	7600	1.31
	12/15/2009	11000	2700	390	6000	3.50
	03/08/2010	2400	1700	1800	2600	4.22
	06/23/2010	4200	1200	23	490	3.64
	09/13/2010	6100	4100	83	1900	2.17
	12/14/2010	8300	610	230	3800	3.77
	03/09/2011	8400	880	180	3300	4.65
	06/23/2011	3100	120	19	1000	3.70
	09/12/2011	6200	110	70	2800	.80
	12/19/2011	4500	<1.0	<1.0	1800	3.70
MW02	09/25/2009	9200	10000	390	5500	1.47
	12/15/2009	8200	8500	300	4800	3.35
	03/08/2010	2900	2300	240	3200	4.12
	06/23/2010	5300	3000	180	2300	3.60
	09/13/2010	6500	580	150	2900	2.22
	12/14/2010	3900	69	130	3200	3.70
	03/09/2011	Insufficient Water - Not Sampled				4.98
	06/23/2011	Dry - Not Sampled				Dry
	09/12/2011	4000	6.7	69	1800	1.58
	12/19/2011	2300	3.1	80	1500	3.62
MW03	09/25/2009	3200	230	170	640	1.14
	12/15/2009	1800	1200	260	4400	3.34
	03/08/2010	870	170	210	2600	4.03
	06/23/2010	78	2.4	140	1300	3.45
	09/13/2010	2800	1.1	2500	23000	1.96
	12/14/2010	130	<1.0	170	4000	3.51
	03/09/2011	80	<1.0	200	2100	4.38
	06/23/2011	31	<1.0	150	1800	3.42
	09/12/2011	31	<1.0	190	1600	1.38
	12/19/2011	26	4.9	140	2200	3.48



TABLE 1 (Continued)  
GROUNDWATER ANALYTICAL AND FIELD RESULTS  
BRANTNER #1, BRANTNER #3, BOULTER 17-34  
WELD COUNTY, COLORADO  
KERR-McGEE OIL & GAS ONSHORE LP

Well Name	Date	Benzene (ug/L)	Toluene (ug/L)	Ethylbenzene (ug/L)	Xylenes (ug/L)	Depth Water/ (Depth Product) (ft bgs)
MW04	01/29/2010	<1.0	<1.0	<1.0	<1.0	3.86
	03/08/2010	<1.0	<1.0	<1.0	<1.0	4.00
	06/23/2010	<1.0	<1.0	<1.0	<1.0	3.41
	09/13/2010	<1.0	<1.0	<1.0	<1.0	2.16
	12/14/2010	3.9	<1.0	<1.0	<1.0	3.53
	03/09/2011	<1.0	<1.0	<1.0	<1.0	4.34
	06/23/2011	<1.0	<1.0	<1.0	<1.0	3.40
	09/12/2011	<1.0	<1.0	<1.0	<1.0	1.56
	12/19/2011	<1.0	<1.0	<1.0	<1.0	3.44
MW05	01/29/2010	<1.0	<1.0	<1.0	<1.0	3.56
	03/08/2010	<1.0	<1.0	<1.0	<1.0	3.69
	06/23/2010	<1.0	<1.0	<1.0	<1.0	3.14
	09/13/2010	<1.0	<1.0	<1.0	<1.0	1.81
	12/14/2010	<1.0	<1.0	<1.0	<1.0	3.21
	03/09/2011	<1.0	<1.0	<1.0	<1.0	4.01
	06/23/2011	<b>19</b>	<1.0	<1.0	<1.0	3.11
	09/12/2011	<1.0	<1.0	<1.0	<1.0	1.20
	12/19/2011	<1.0	<1.0	<1.0	<1.0	3.15
MW06	01/29/2010	1.3	<1.0	<1.0	<1.0	3.92
	03/08/2010	1.1	<1.0	<1.0	<1.0	4.07
	06/23/2010	<b>15</b>	<1.0	<1.0	<1.0	3.48
	09/13/2010	<1.0	<1.0	<1.0	<1.0	2.03
	12/14/2010	<1.0	<1.0	<1.0	<1.0	3.52
	03/09/2011	<1.0	<1.0	<1.0	<1.0	4.36
	06/23/2011	<1.0	<1.0	<1.0	<1.0	3.43
	09/12/2011	<1.0	<1.0	<1.0	<1.0	1.45
	12/19/2011	<1.0	<1.0	<1.0	<1.0	3.45
MW07	01/29/2010	<b>58</b>	13	<1.0	1.0	4.44
	03/08/2010	<b>1300</b>	<1.0	<1.0	5.0	4.67
	06/23/2010	<b>70</b>	<1.0	<1.0	<1.0	3.96
	09/13/2010	<1.0	<1.0	<1.0	<1.0	2.37
	12/14/2010	<1.0	<1.0	<1.0	<1.0	3.98
	03/09/2011	<b>650</b>	<1.0	<1.0	<1.0	4.92
	06/23/2011	<b>84</b>	<1.0	<1.0	<1.0	3.95
	09/12/2011	<1.0	<1.0	<1.0	<1.0	1.65
	12/19/2011	<1.0	<1.0	<1.0	<1.0	3.88



TABLE 1 (Continued)  
GROUNDWATER ANALYTICAL AND FIELD RESULTS  
BRANTNER #1, BRANTNER #3, BOULTER 17-34  
WELD COUNTY, COLORADO  
KERR-McGEE OIL & GAS ONSHORE LP

Well Name	Date	Benzene (ug/L)	Toluene (ug/L)	Ethylbenzene (ug/L)	Xylenes (ug/L)	Depth Water/ (Depth Product) (ft bgs)
MW08	01/05/2011	<1.0	<1.0	<1.0	<1.0	3.36
	03/09/2011	<b>20</b>	<1.0	<1.0	<1.0	4.00
	06/23/2011	<1.0	<1.0	<1.0	<1.0	3.01
	09/12/2011	<1.0	<1.0	<1.0	<1.0	.72
	12/19/2011	<1.0	<1.0	<1.0	<1.0	2.97
Colo GW Quality Standards		5	1000	700	1400	

Notes: NM - Not Measured  
ug/L - micrograms per Liter  
NA - Not Analyzed/Not Available

GW - Groundwater      ft bgs - feet below ground surface  
< - less than laboratory reporting limit  
Bold numbers indicate result equaled or exceeded standard.



**TABLE 2**  
**SURFACE WATER ANALYTICAL RESULTS**  
**BRANTNER #1, BRANTNER #3, BOULTER 17-34**  
**WELD COUNTY, COLORADO**  
**KERR-McGEE OIL & GAS ONSHORE LP**

Sample Name	Date	Benzene (ug/L)	Toluene (ug/L)	Ethyl-benzene (ug/L)	Xylenes (ug/L)
SW01	09/30/2009	<1.0	<1.0	<1.0	<1.0
	12/15/2009	Dry - Not Sampled			NA
	03/08/2010	Dry - Not Sampled			NA
	09/13/2010	<1.0	<1.0	<1.0	<1.0
	12/14/2010	Dry - Not Sampled			NA
	03/09/2011	Dry - Not Sampled			NA
	06/23/2011	Dry - Not Sampled			NA
	09/12/2011	1.0	<1.0	<1.0	<1.0
	12/19/2011	Dry - Not Sampled			NA
SW02	09/30/2009	<1.0	<1.0	<1.0	<1.0
	12/15/2009	Dry - Not Sampled			NA
	03/08/2010	Dry - Not Sampled			NA
	09/13/2010	<1.0	<1.0	<1.0	<1.0
	12/14/2010	Dry - Not Sampled			NA
	03/09/2011	Dry - Not Sampled			NA
	06/23/2011	Dry - Not Sampled			NA
	09/12/2011	<1.0	<1.0	<1.0	<1.0
	12/19/2011	Dry - Not Sampled			NA

Notes: < - less than  
ug/L - micrograms per Liter  
NA - Not Analyzed/Not Available

