





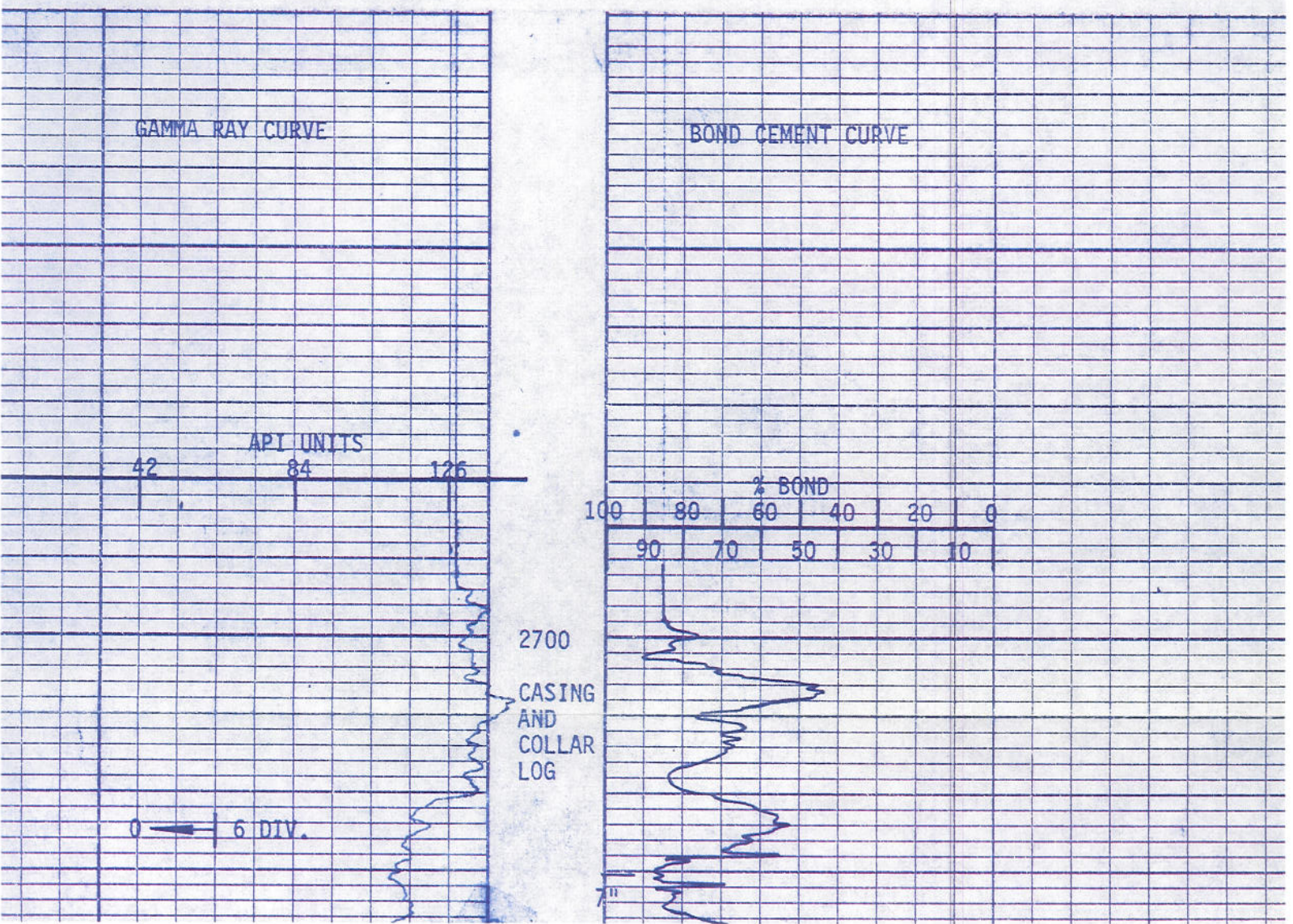
DATE RECORDED	9-21-77	TOOL MODEL NO.	5547-0-0
TIME STARTED		DIAMETER	3.5" x 1.75"
TIME FINISHED		LENGTH	17' (4' SPACING)
LOGGED INTERVAL	6082'-2700'		
LOGGED CEMENT TOP			

CEMENTING DATA					
	1	2	SQUEEZE NO. 1	SQUEEZE NO. 2	SQUEEZE NO. 3
DATE AND HOUR SET					
SETTING TIME (HRS.)					
TYPE CEMENT					
SACKS USED					
PRECEDING FLUID					
% ADDITIVE					
% RETARDER					
SLURRY WEIGHT					
BREAKDOWN PRESSURE					
SURFACE MAX. PRESS.					
BOTTOM MAX. PRESS.					

GAMMA RAY				NEUTRON			
RUN NO.	ONE			RUN NO.			
TOOL MODEL NO.	5547-0-0			LOG TYPE			
DIAM.	3.5"			TOOL MODEL NO.			
DETECT. MODEL NO.	5547-18			DIAM.			
TYPE	SCINT.			DETECT. MODEL NO.			
LENGTH	3"			TYPE			
DIST. TO N. SOURCE				LENGTH			
				SOURCE MODEL NO.			
				SERIAL NO.			
				SPACING			
				TYPE			
				STRENGTH			

LOGGING DATA											
GENERAL				GAMMA RAY				NEUTRON			
RUN NO.	DEPTHS		SPEED FT./MIN.	T. C. SEC.	SENS. SETTINGS	ZERO DIV. L. OR R.	API GR. UNITS PER LOG DIV.	T. C. SEC.	SENS. SETTINGS	ZERO DIV. L. OR R.	AF PE
	FROM	TO									
1	6078'	2700'	30	3	G-230 D-400 R-5	3L	10.5				
REMARKS											

REMARKS:





COLLAR  
LOG

0 — 6 DIV.

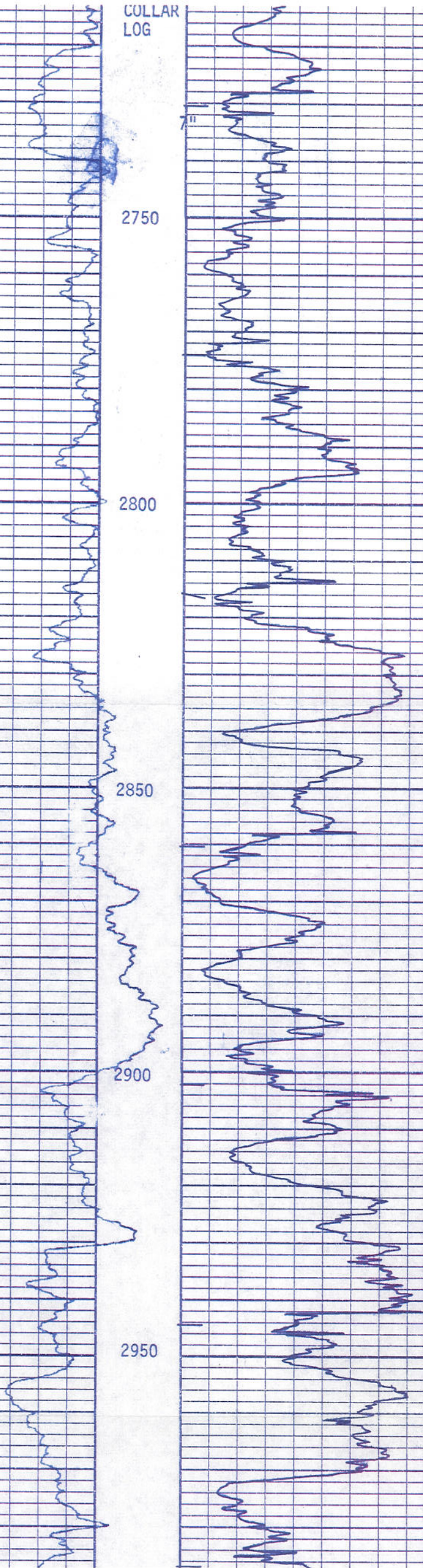
2750

2800

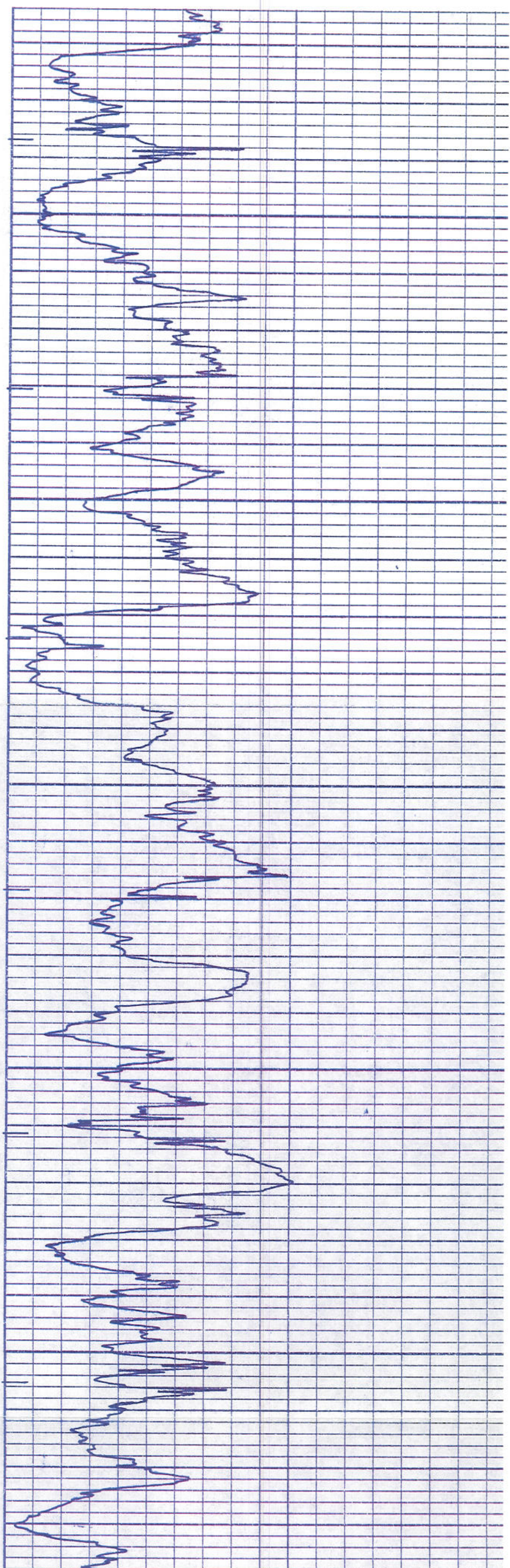
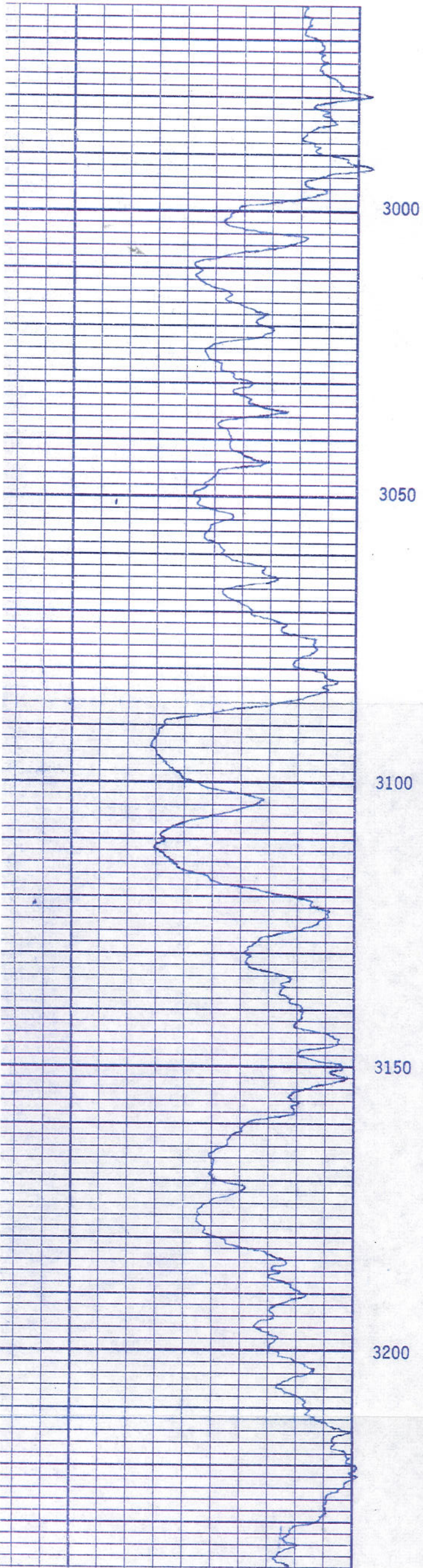
2850

2900

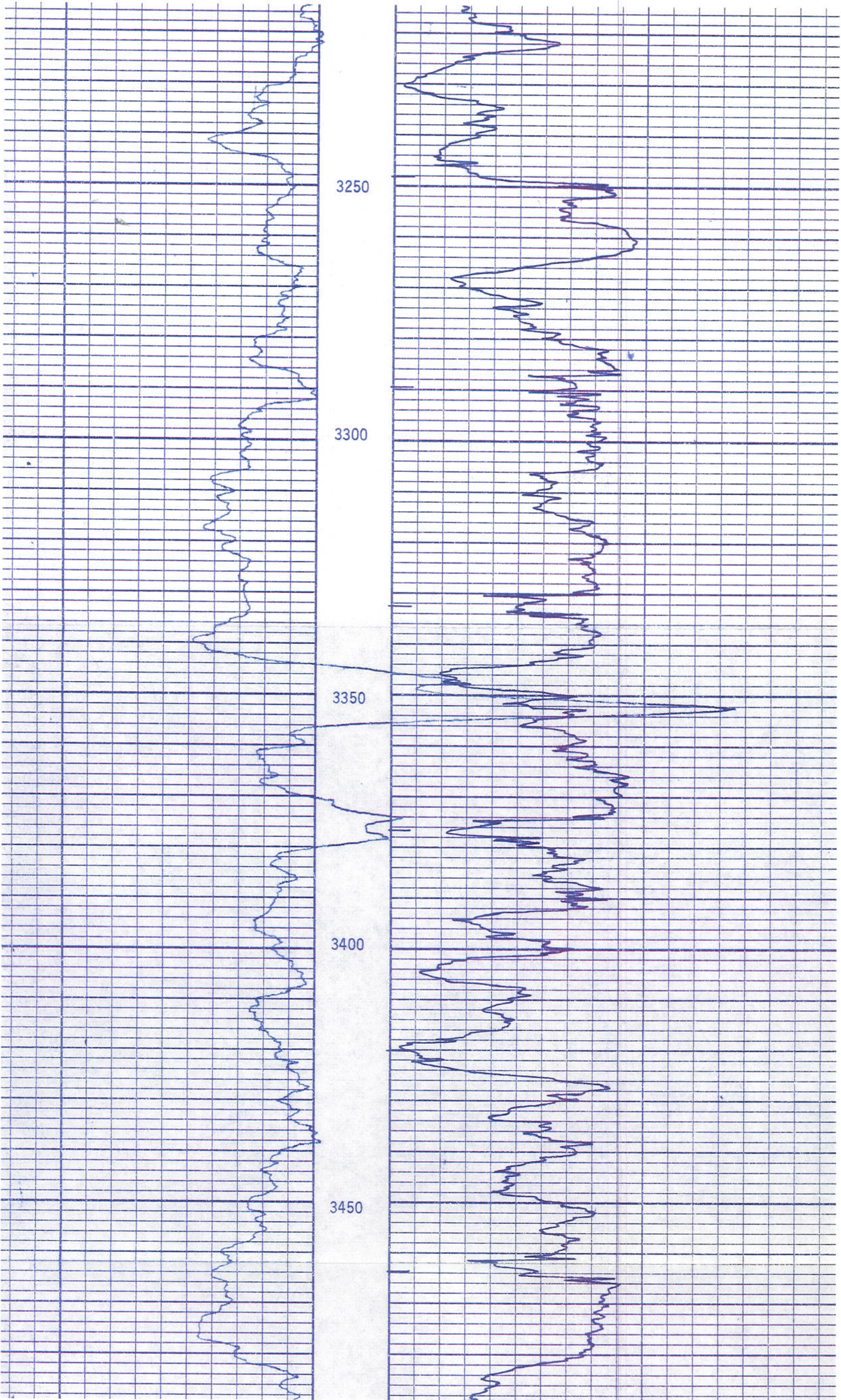
2950



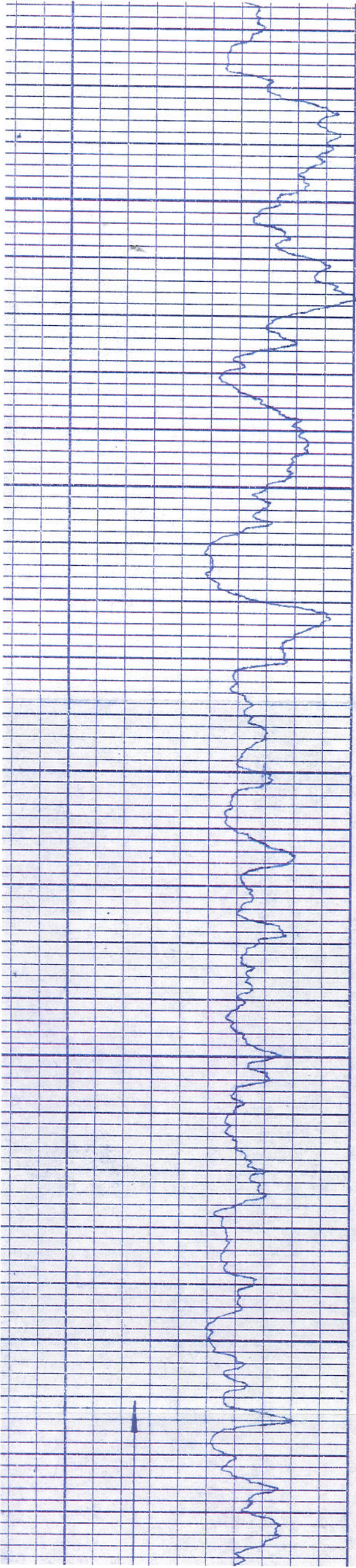












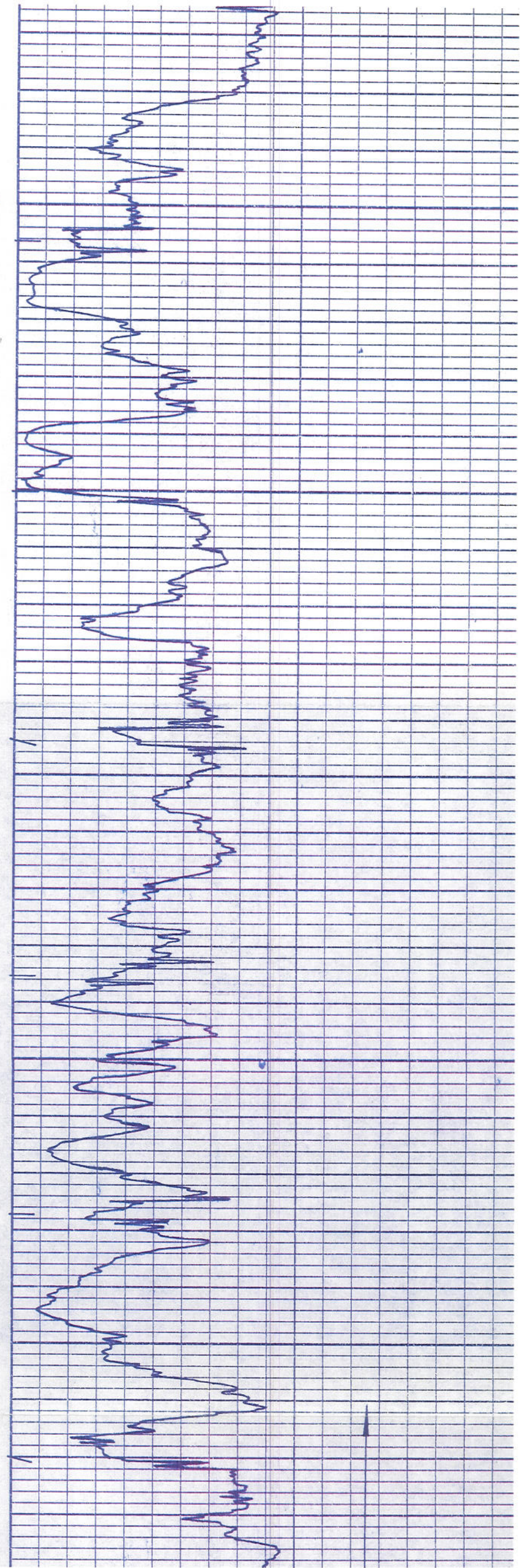
3500

3550

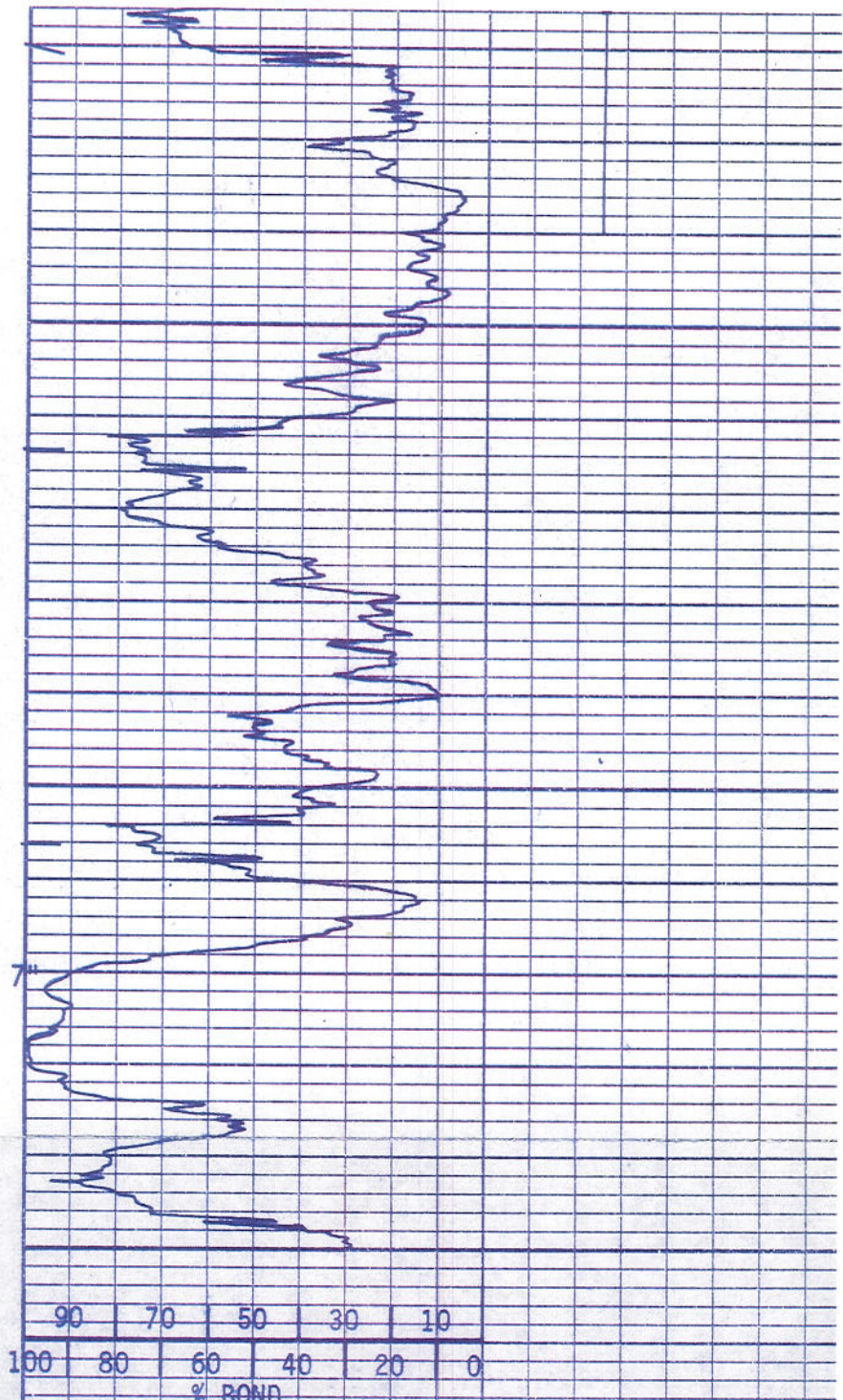
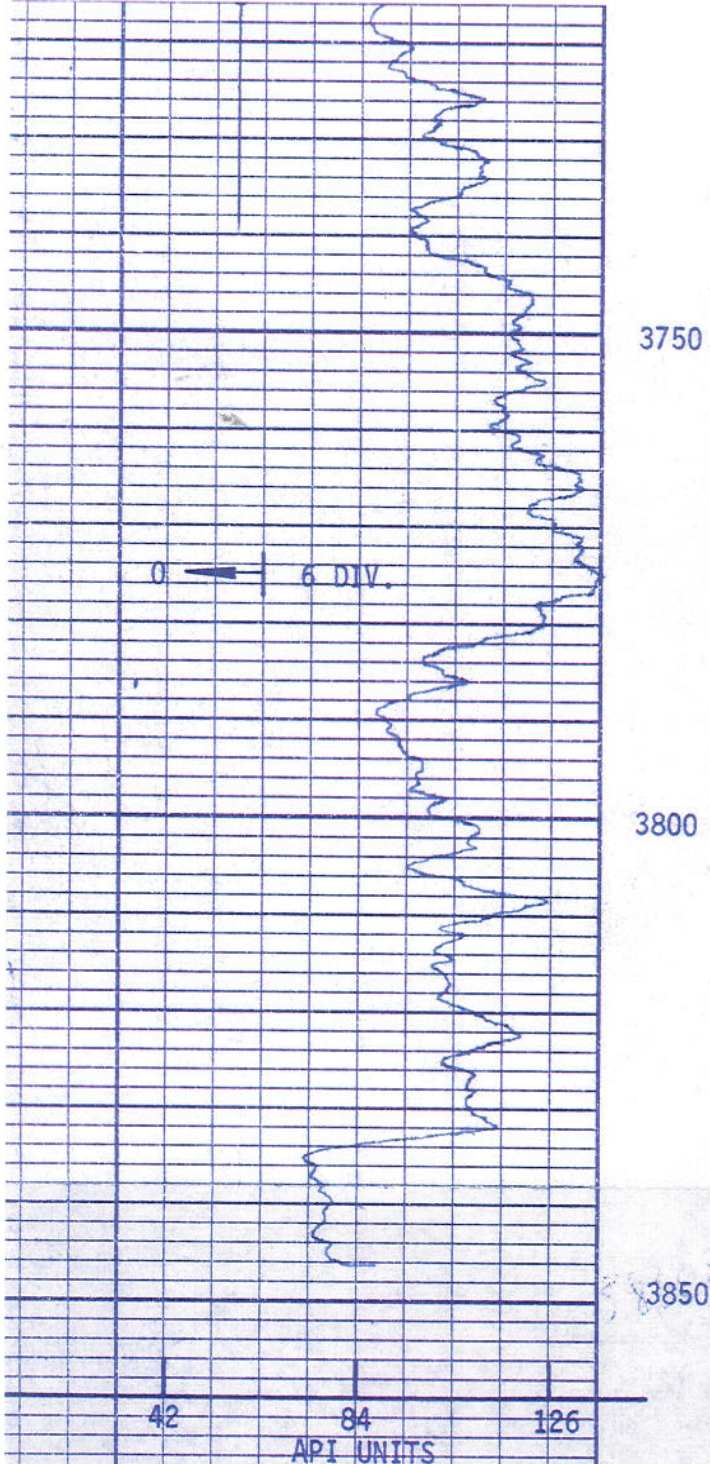
3600

3650

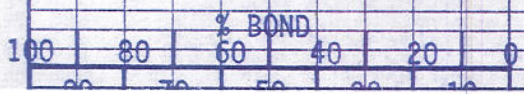
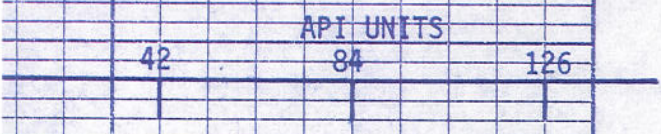
3700







DID NOT LOG THIS INTERVAL





API UNITS

42

84

126

100 80 60 40 20 0  
90 70 50 30 10

4400

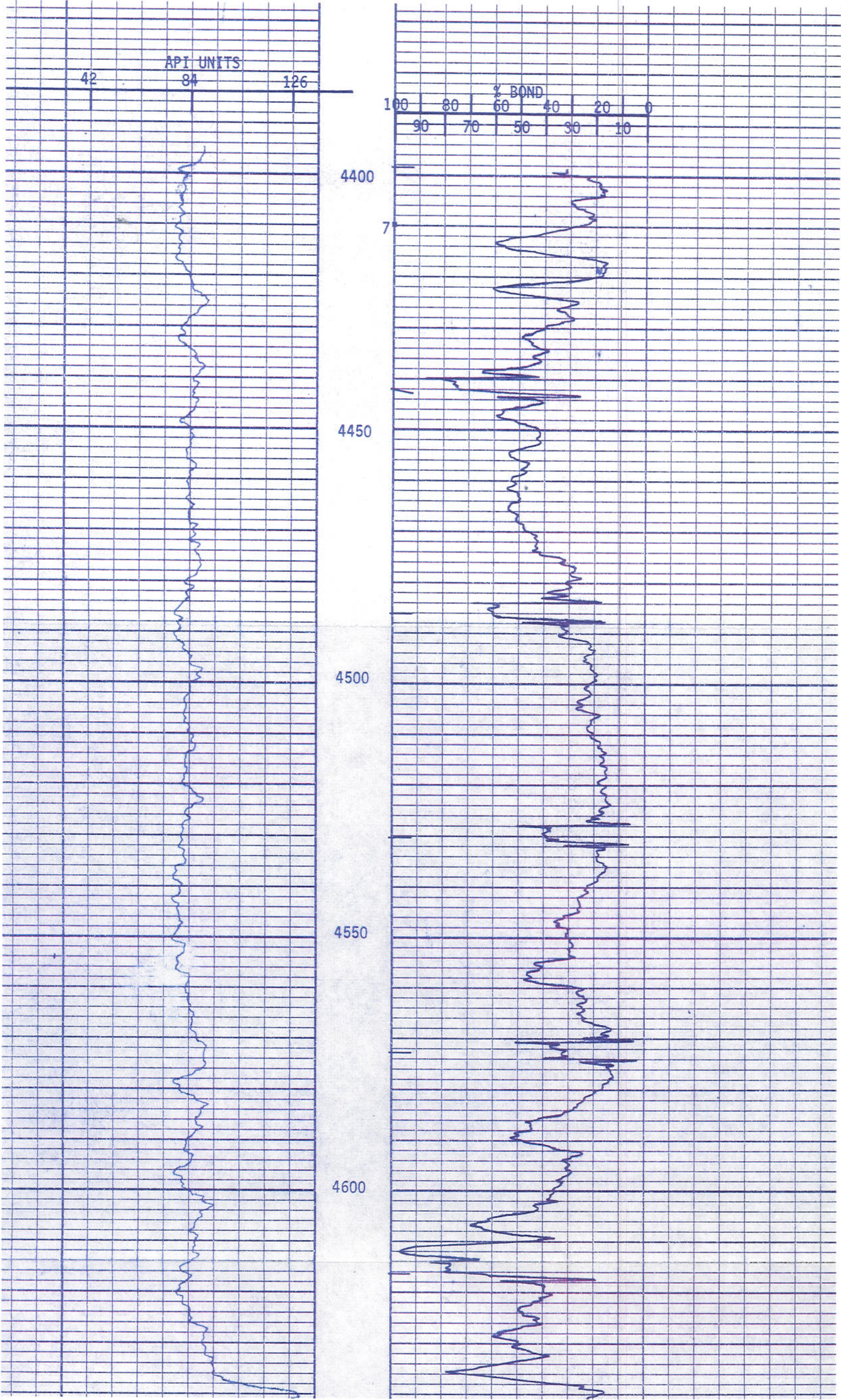
7

4450

4500

4550

4600





0 — 7 DIV.

4650

4700

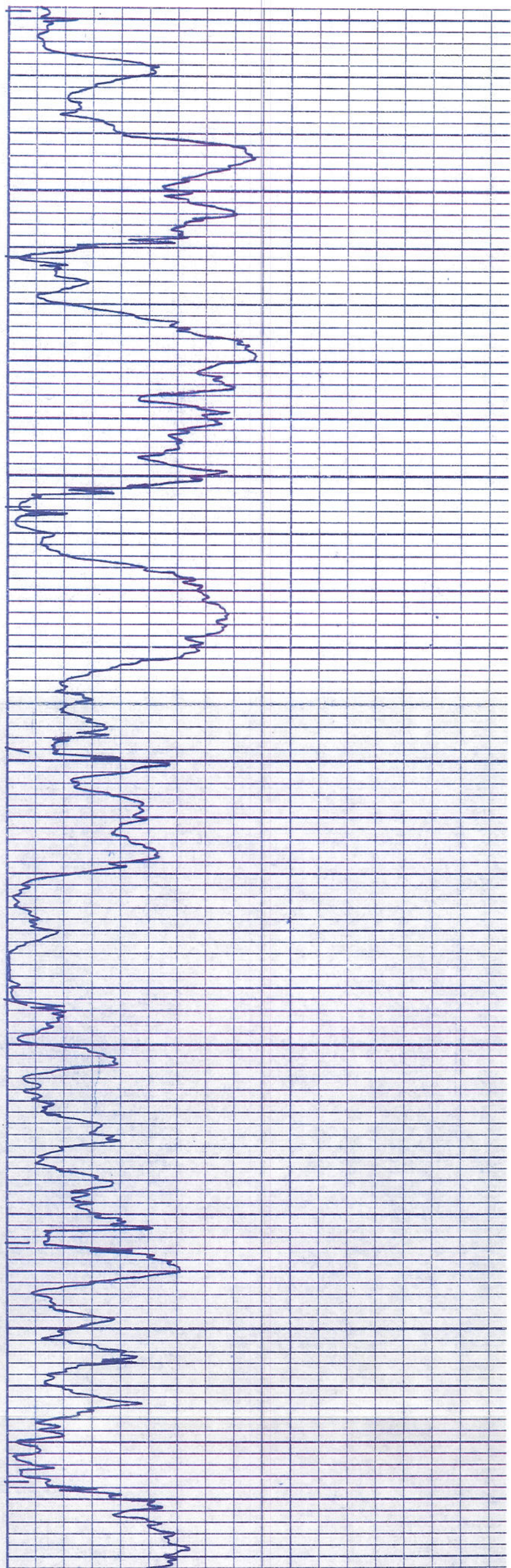
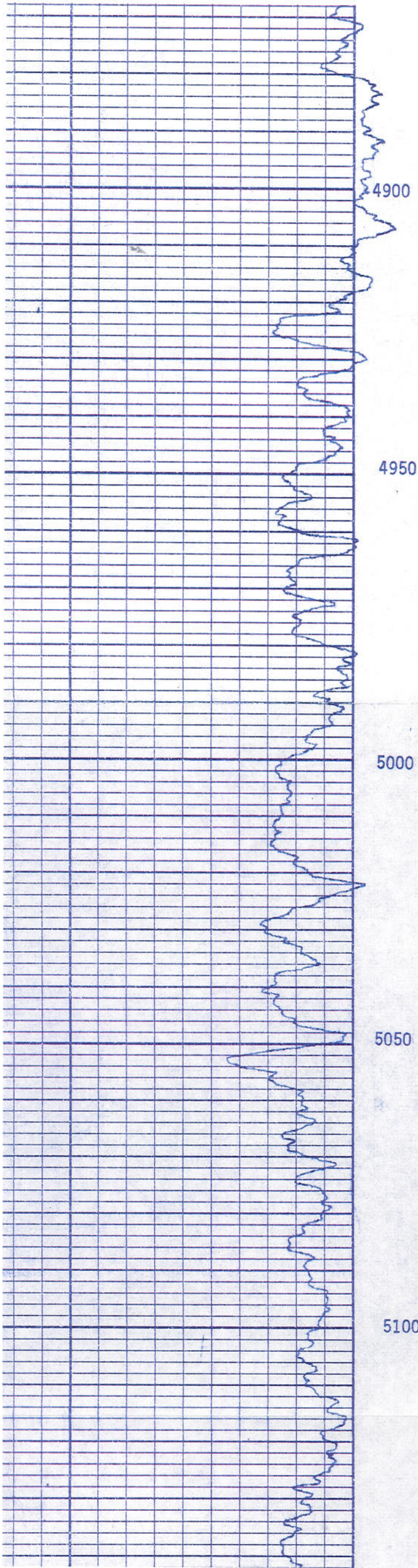
4750

4800

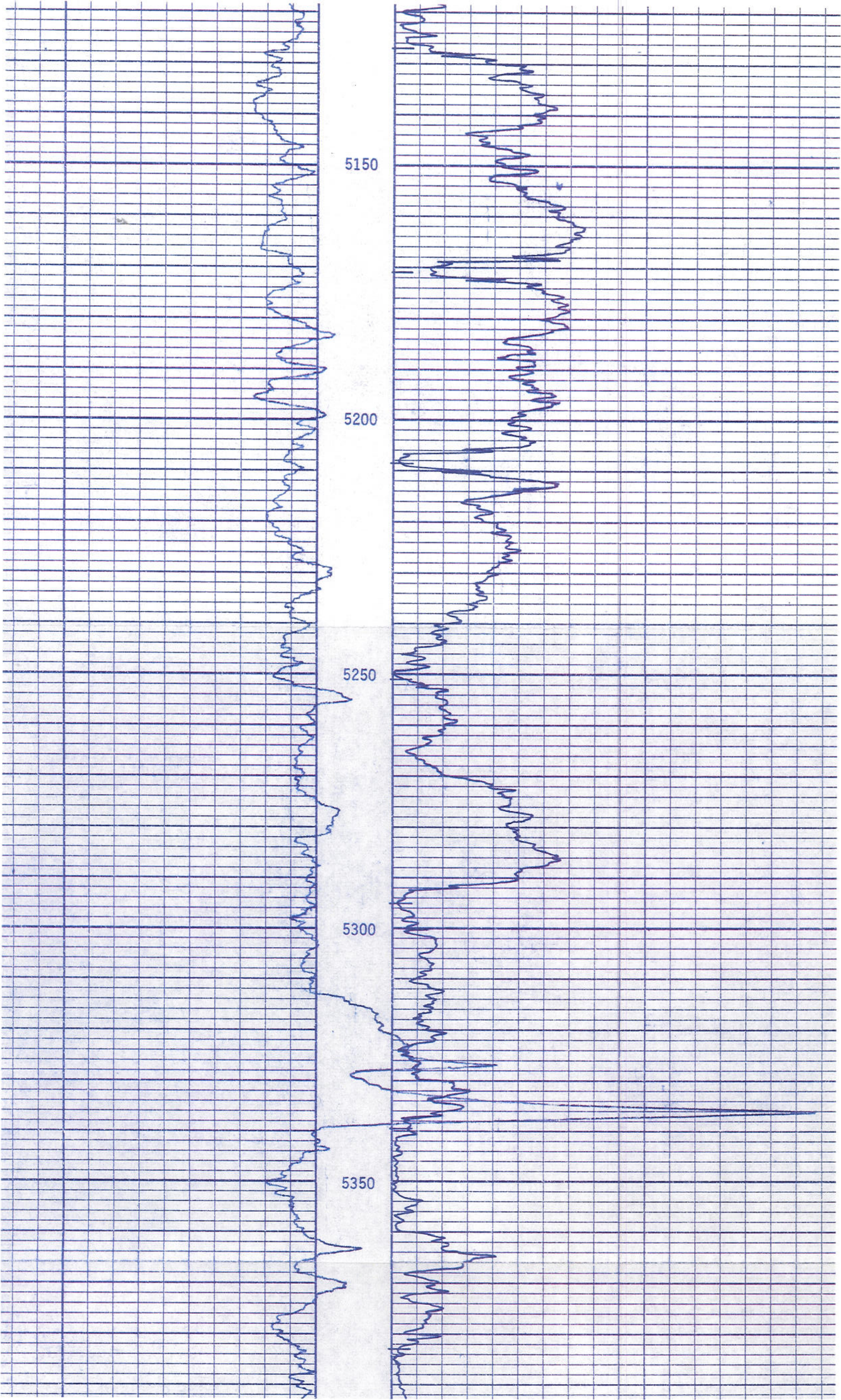
4850



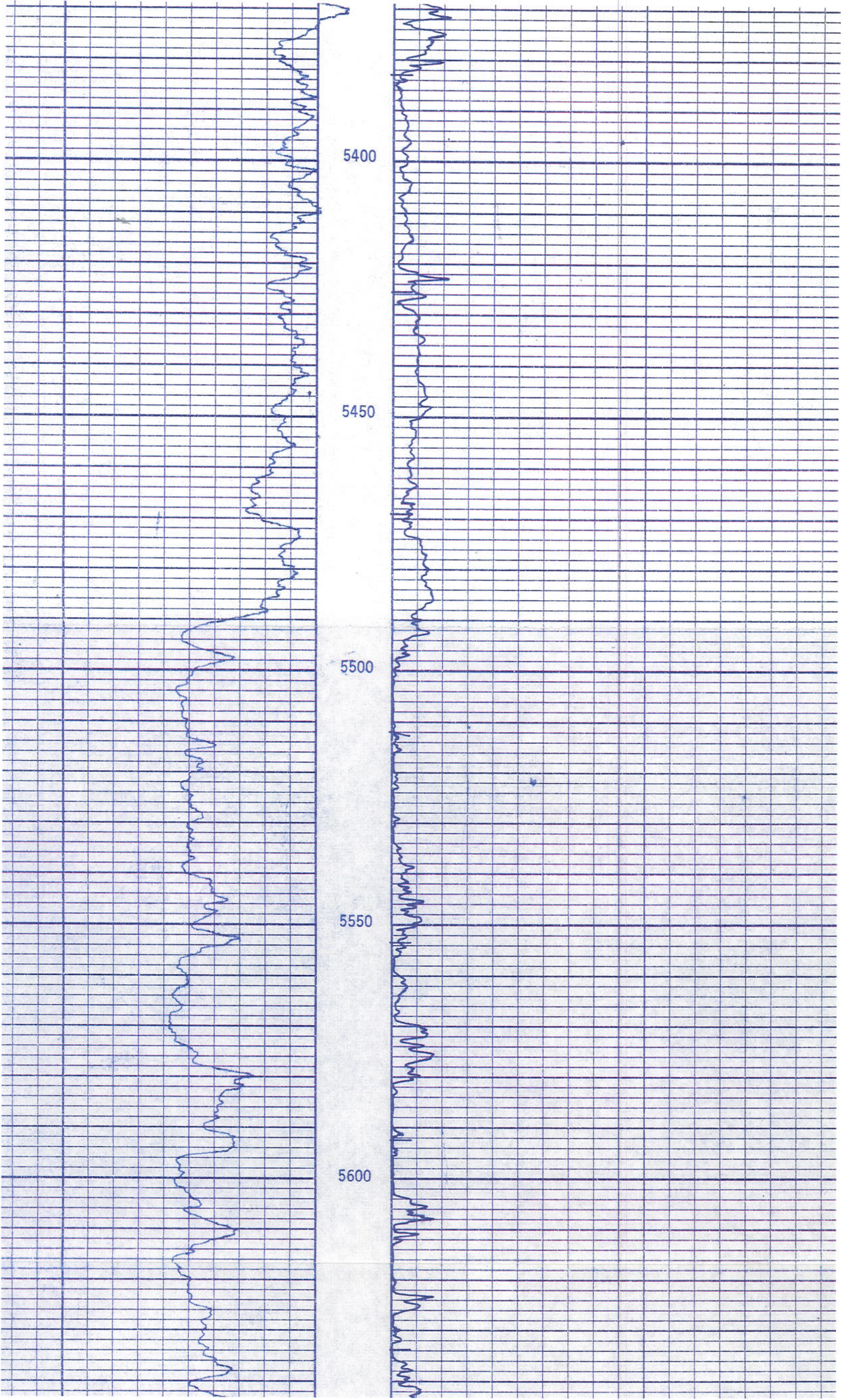




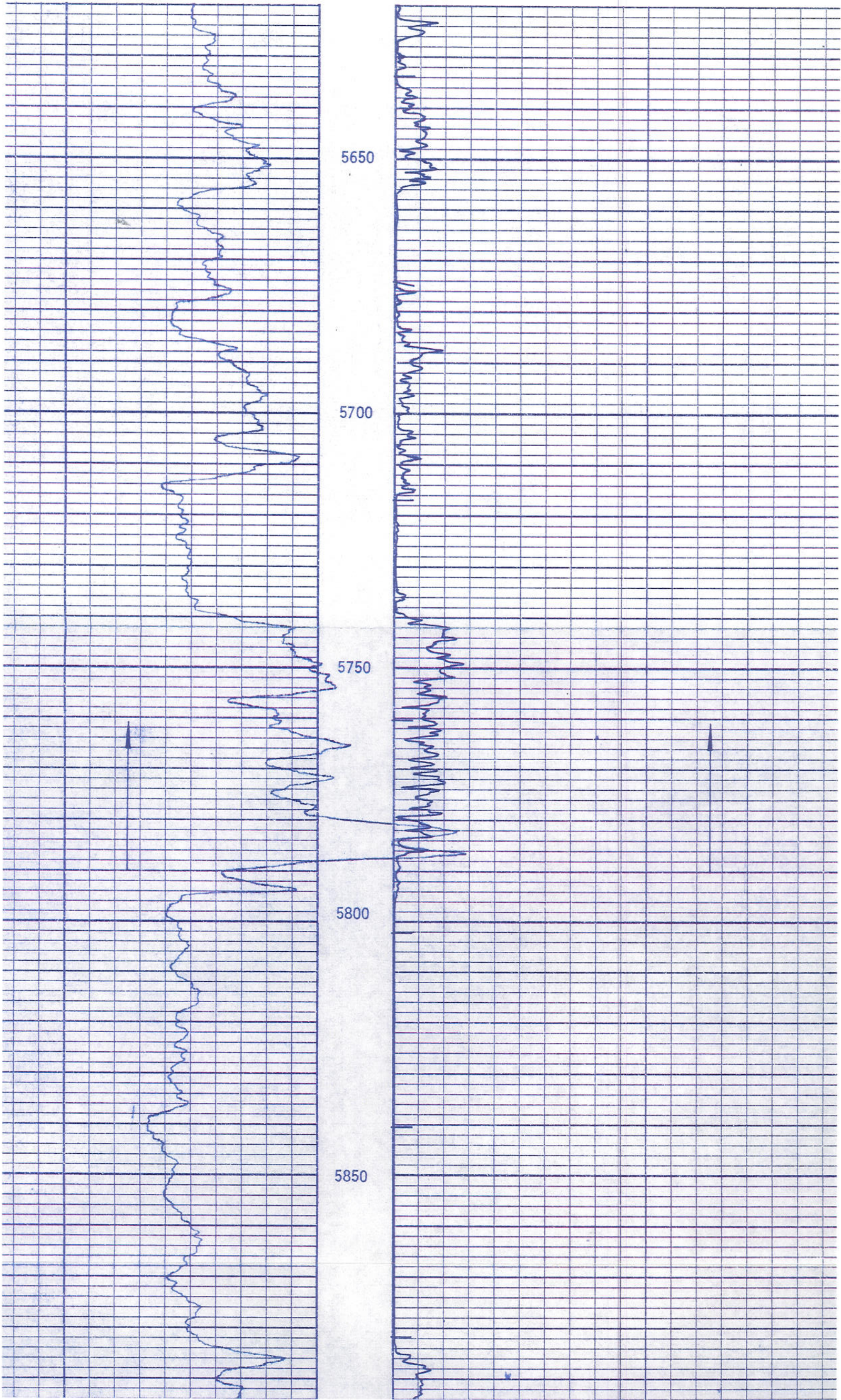




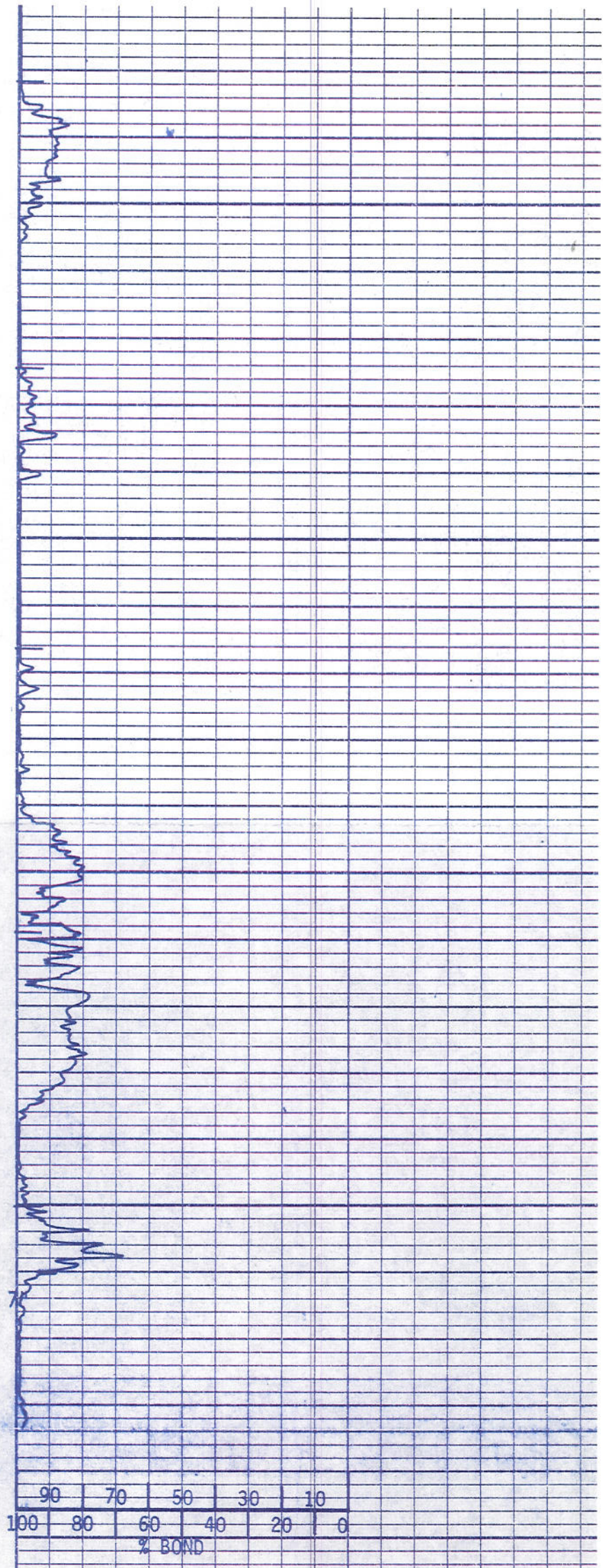
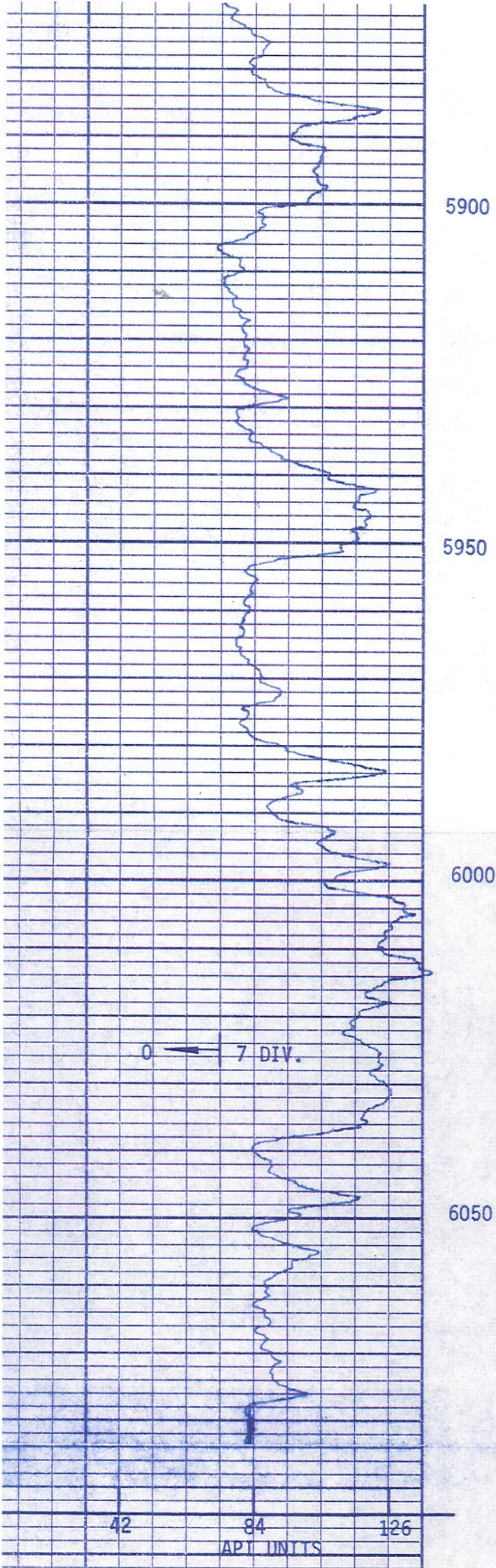












LOG BOTTOM - 6082'

CHEVRON USA, INCORPORATED

Mc LAUGHLIN A-7X

RANGELY FIELD

RIO BLANCO COUNTY, COLORADO



MC LAUGHLIN 7-77  
RANGELY FIELD  
RIO BLANCO COUNTY, COLORADO

REPEAT SECTION - BEFORE CORRELATION

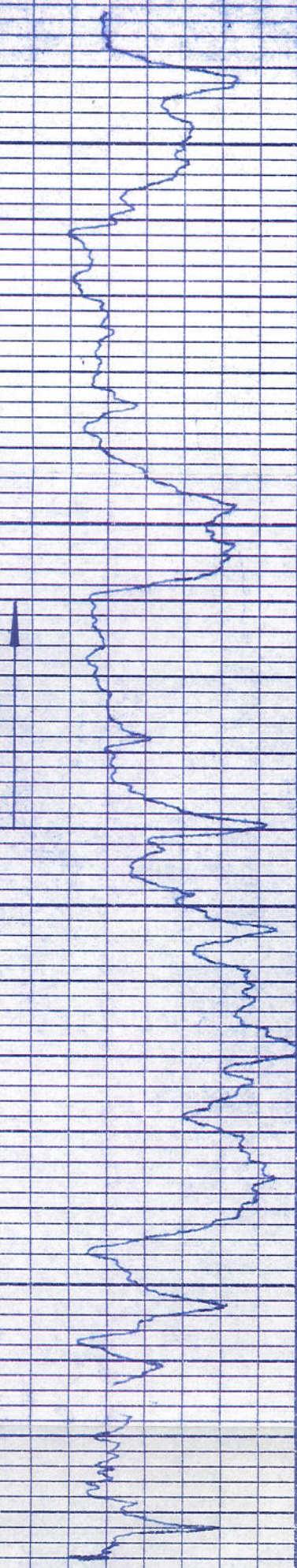
5900

7

5950

6000

6050





RECEIVED

NOV 21 1977

CHEVRON U. S. A. INC.  
RANGELY FIELD

BOND CEMENT AND/OR SONIC SEISMOGRAM LOG

GAMMA RAY LOG

FILING NO.

**CHEVRON USA, INC.**

HBC-GR-88513

WELL S.W. McLAUGHLIN A-7\* 7X

FIELD RANGELY

COUNTY RIO BLANCO STATE COLORADO

### LOCATION

### OTHER SERVICES:

SEC. TWP. RGE.

## ELEVATIONS:

PERMANENT DATUM	ELEV.
61	

LOG MEASURED FROM KPR

DRILLING MEASURED FROM KB

DATE	9-21-77
------	---------

RUN NO.	ONE
---------	-----

TYPE LOG	ONE	BOND CEMENT	GAMMA RAY
----------	-----	-------------	-----------

DEPTH - DRILLER

DEPTH	LOGGED
1000	

BOTTOM OCCUR INTERVAL	6086
DEPTH - FEET	6089

DOWN LOADED INTERVAL	6082
TOP LOADED INTERVAL	6082

LOGGED INTERVAL	2/00
TYPE ELEMENT	

WATER	WATER
-------	-------

	SALINITY PPM·CL.	
--	------------------	--

DENSITY LB./GAL.	

LEVEL	150'
-------	------

MAX. REC. TEMP. DEG. F.	

OPR. RIG TIME

RECORDED BY	WASON
-------------	-------

WITNESSED BY	MR. R
--------------	-------

RUN	BORE HOLE RECORD
-----	------------------

### CASING RECORD

NO.	BIT	FROM	TO
1	1	1	1
2	2	2	2
3	3	3	3
4	4	4	4
5	5	5	5
6	6	6	6
7	7	7	7
8	8	8	8
9	9	9	9
10	10	10	10
11	11	11	11
12	12	12	12
13	13	13	13
14	14	14	14
15	15	15	15
16	16	16	16
17	17	17	17
18	18	18	18
19	19	19	19
20	20	20	20
21	21	21	21
22	22	22	22
23	23	23	23
24	24	24	24
25	25	25	25
26	26	26	26
27	27	27	27
28	28	28	28
29	29	29	29
30	30	30	30
31	31	31	31
32	32	32	32
33	33	33	33
34	34	34	34
35	35	35	35
36	36	36	36
37	37	37	37
38	38	38	38
39	39	39	39
40	40	40	40
41	41	41	41
42	42	42	42
43	43	43	43
44	44	44	44
45	45	45	45
46	46	46	46
47	47	47	47
48	48	48	48
49	49	49	49
50	50	50	50
51	51	51	51
52	52	52	52
53	53	53	53
54	54	54	54
55	55	55	55
56	56	56	56
57	57	57	57
58	58	58	58
59	59	59	59
60	60	60	60
61	61	61	61
62	62	62	62
63	63	63	63
64	64	64	64
65	65	65	65
66	66	66	66
67	67	67	67
68	68	68	68
69	69	69	69
70	70	70	70
71	71	71	71
72	72	72	72
73	73	73	73
74	74	74	74
75	75	75	75
76	76	76	76
77	77	77	77
78	78	78	78
79	79	79	79
80	80	80	80
81	81	81	81
82	82	82	82
83	83	83	83
84	84	84	84
85	85	85	85
86	86	86	86
87	87	87	87
88	88	88	88
89	89	89	89
90	90	90	90
91	91	91	91
92	92	92	92
93	93	93	93
94	94	94	94
95	95	95	95
96	96	96	96
97	97	97	97
98	98	98	98
99	99	99	99
100	100	100	100

SIZE	WGT.
------	------

FROM

To

[illegible]

7"	23#
----	-----

0

TD

SCANNED  
INTO EWE

FOLD HERE

THIS HEADING AND LOG CONFORMS TO API RECOMMENDED STANDARD PRACTICE RP-33 (P)