

Houston, TX

Main (281) 774-5600 / Support (866) 433-4345
www.myWells.com

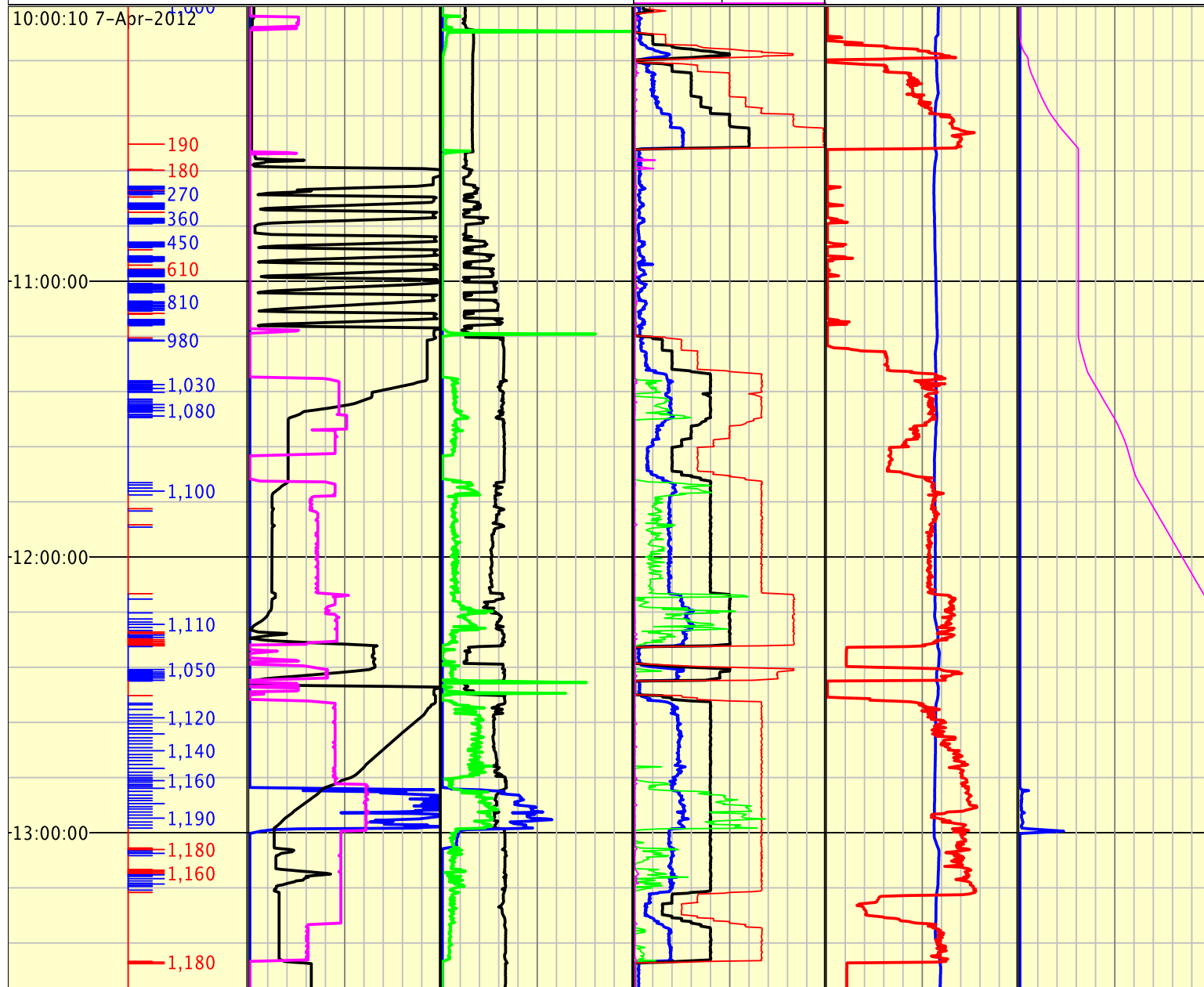
Operator
Well
Field
State
County
Rig Number
Spud Date
API Number
Contractor

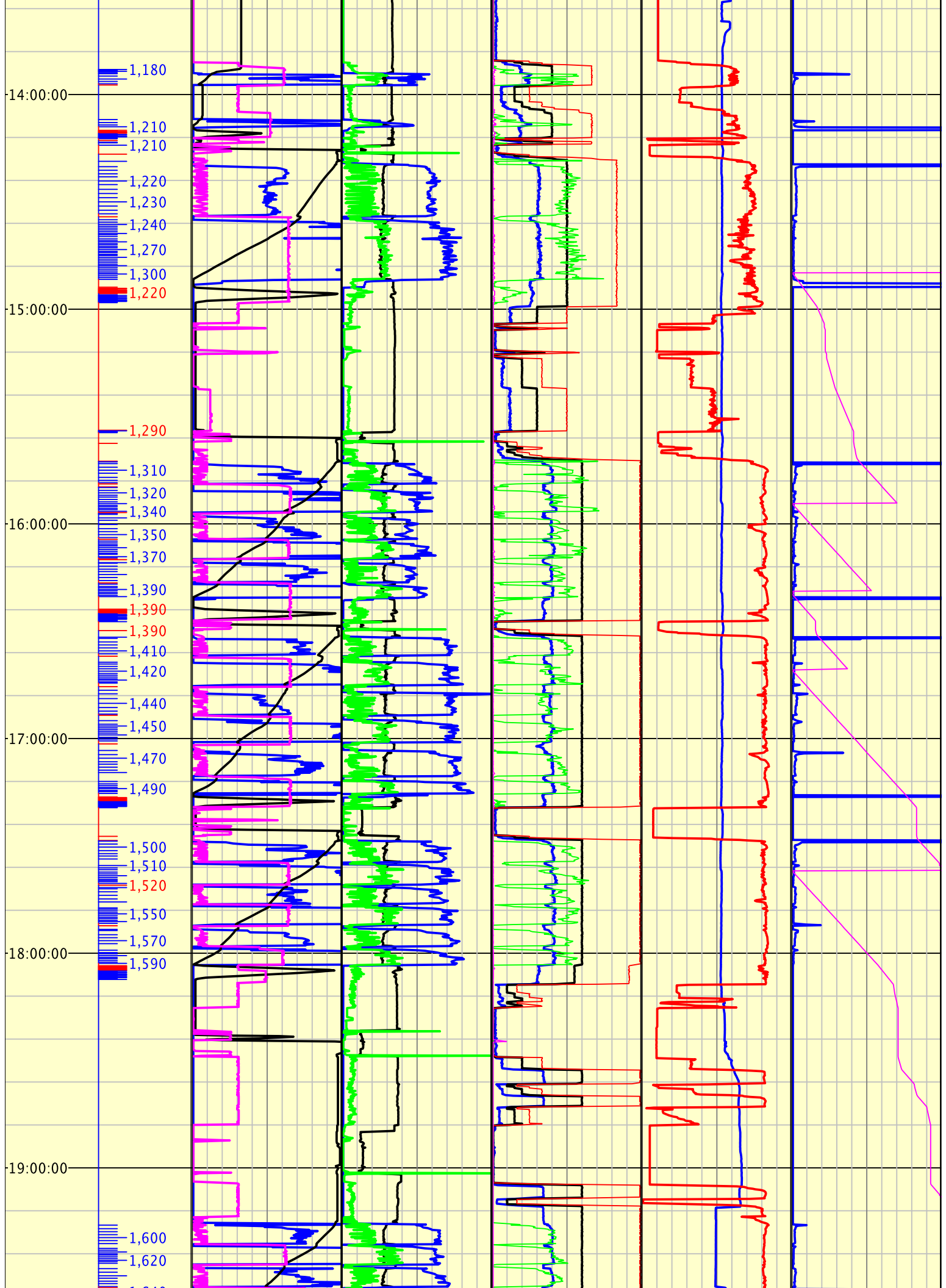
ENCANA CORPORATION
00M15-TWIN CREEK 12-6A1
TWIN CREEK
COLORADO
GARFIELD
M15
2012-01-18
NABORS DRILLING USA, LP

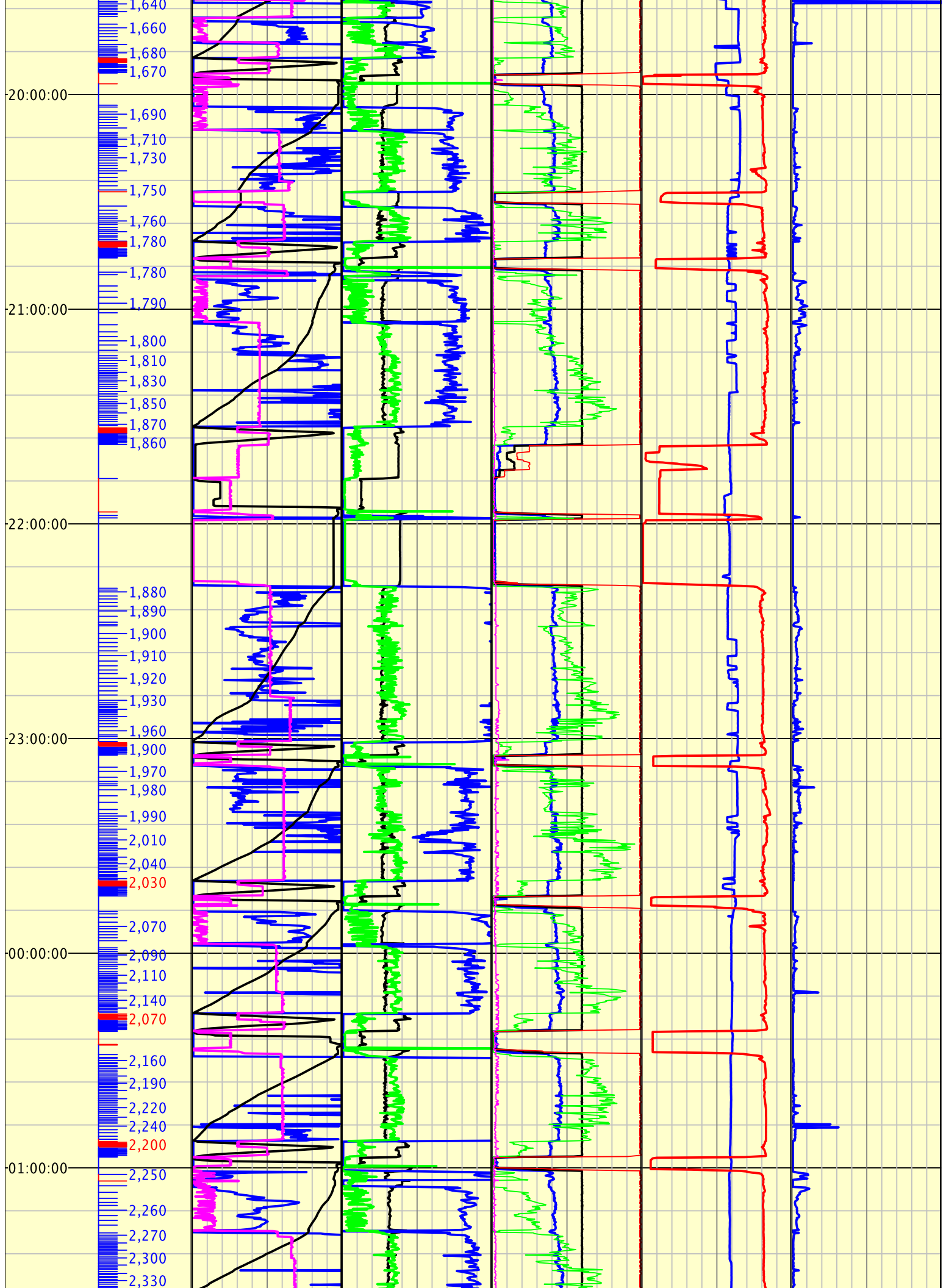
DATES: 10:00:10 7-Apr-2012 TO 13:30:00 12-Apr-2012

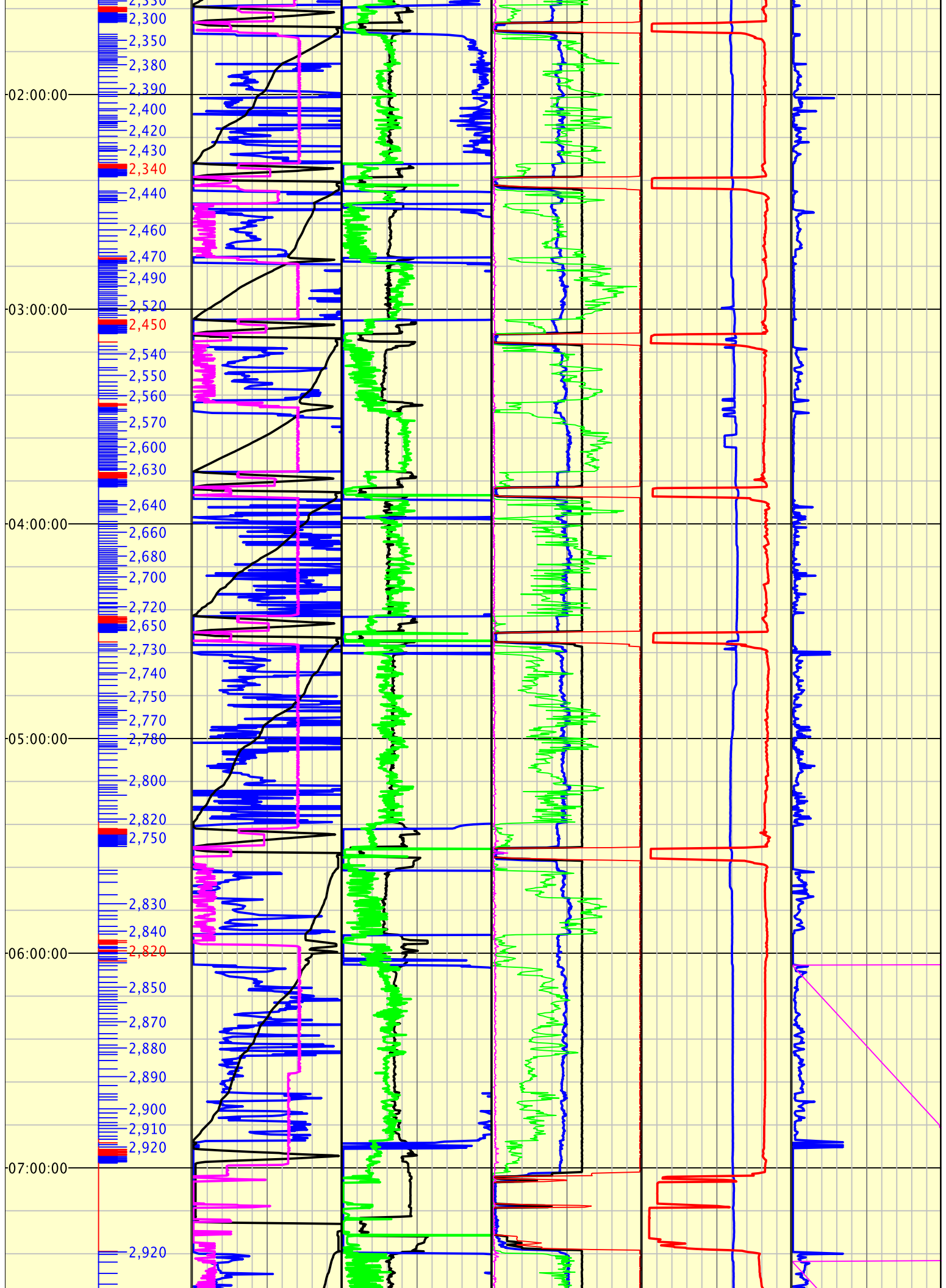
SCALE: 6 hrs per page

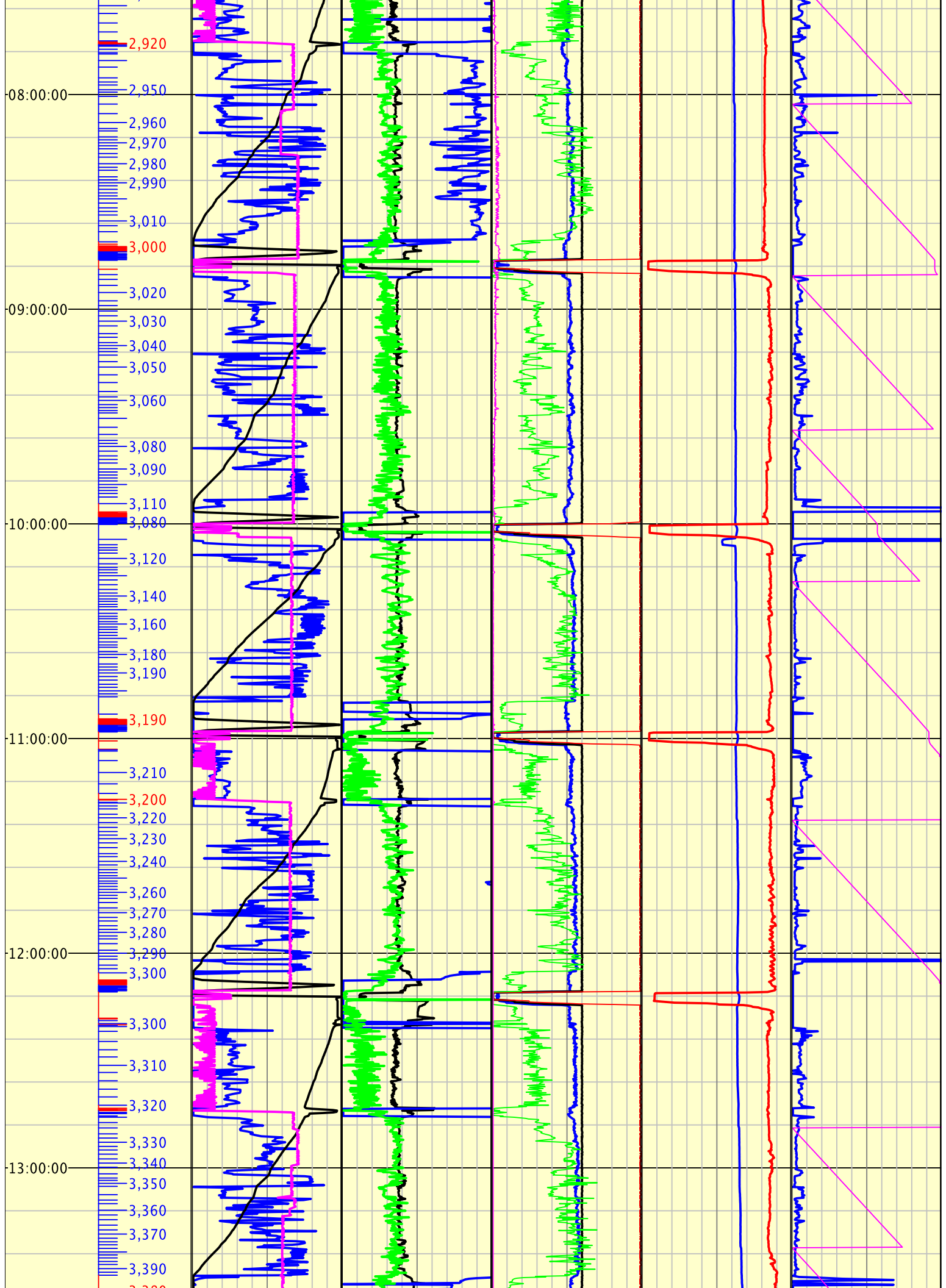
Time/Depth track	Track 1	Track 2	Track 3	Track 4	Track 5
Date: 00:20:40 3-May-2012	ROP Depth/Hour <0 0 ft/hr 200>	Hookload <0 24.2 klbs 200>	Pump Pressure <0 0 psi 4000>	Pit Volume Active <0 568.9 bbls 1000>	Gas Total - units <0 N/A units 2000>
Depth-Bit: 5,646.93	Block Position <0 7.85 ft 100>	Weight on Bit <0 0 klbs 30>	SPM Total <0 0 spm 200>	Return Flow <0 0 % 100>	ROP Minute/Depth <0 0 min/ft 20>
Depth-Hole: 5,670	Rotary RPM < N/A >	Rotary Torque < N/A >	Flow In <0 0.08 gal/min 500>		MWD Gamma (API) < N/A >
Rig # M15	Top Drive RPM <0 0 rpm 100>	Top Drive Torque (ft-lbs) <0 0 ft-lbs 20000>	AD Differential Pressure A <0 0 psi 500>		Strokes Total <0 1,355 stks 5000>
NABORS DRILLING USA, LP			Casing Pressure <0 0 psi 500>		
ENCANA CORPORATION					

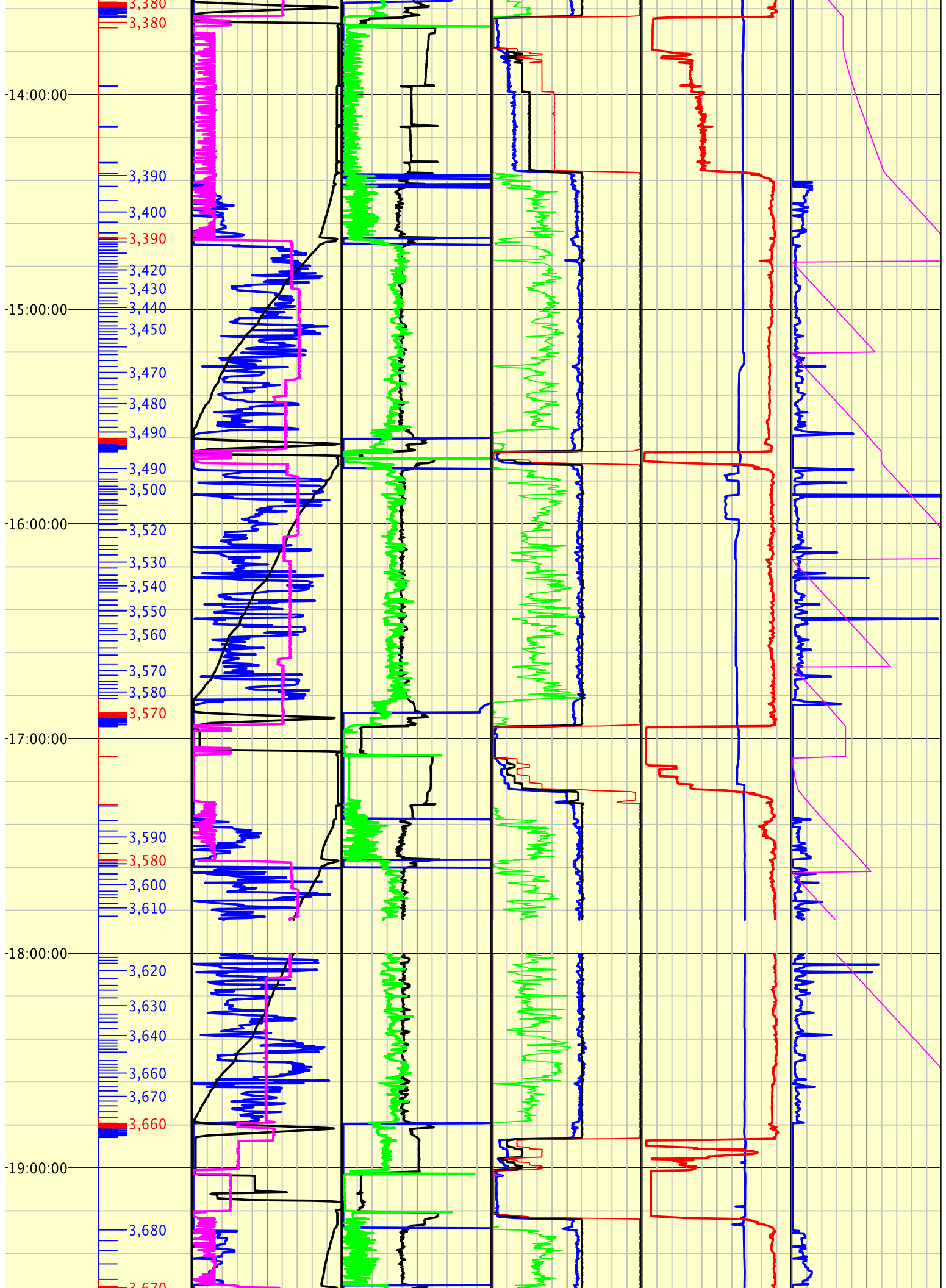


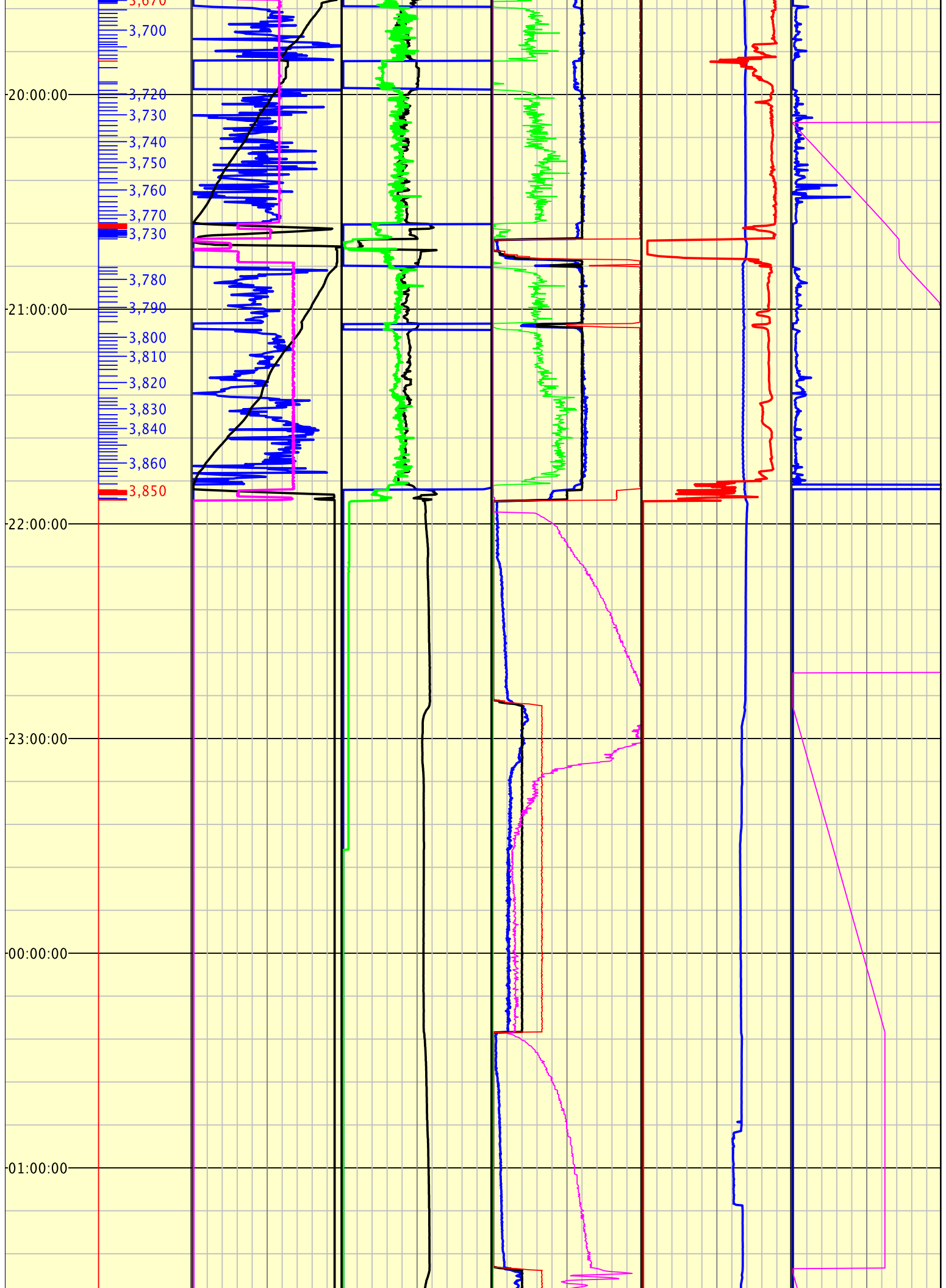


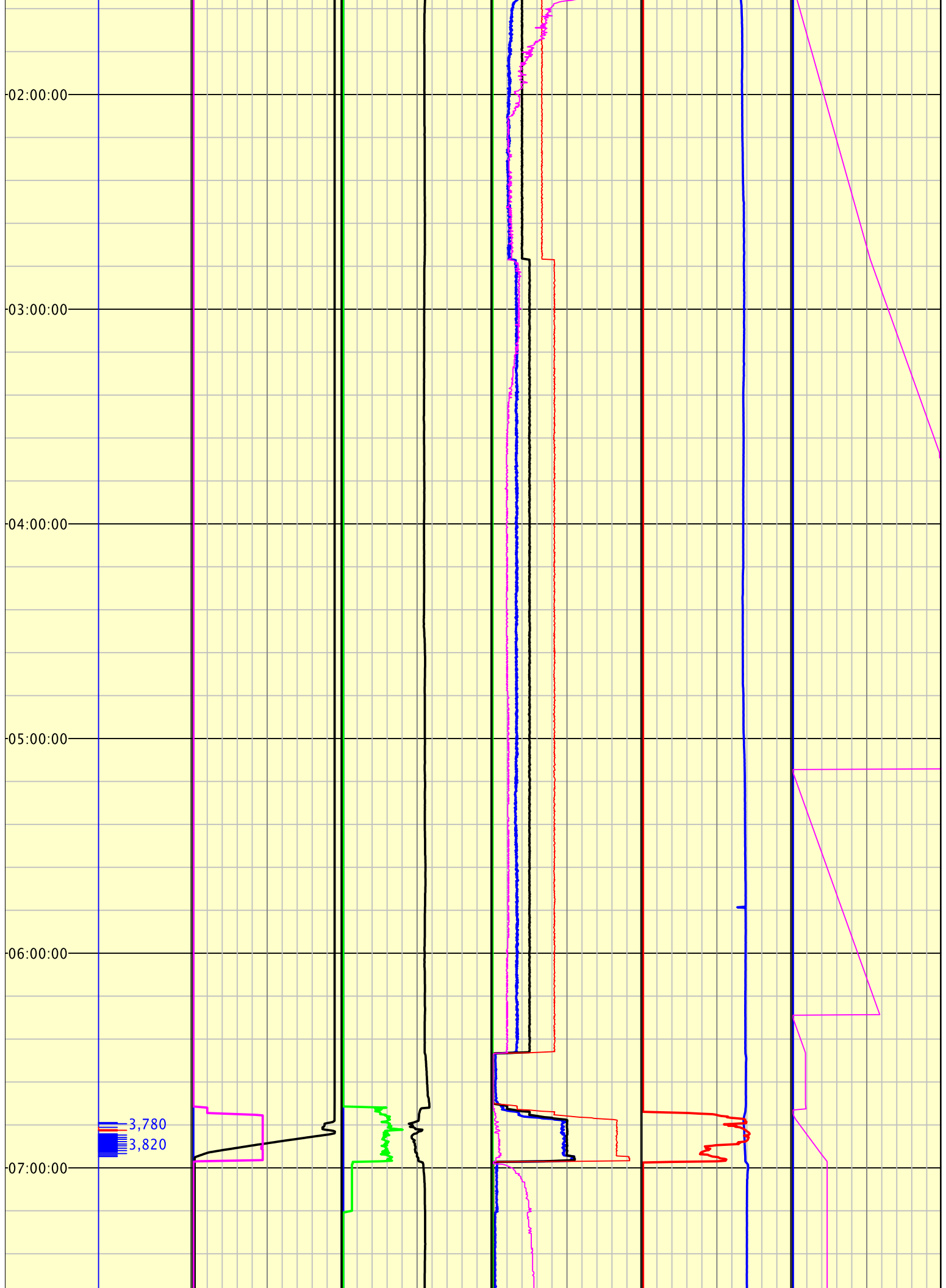


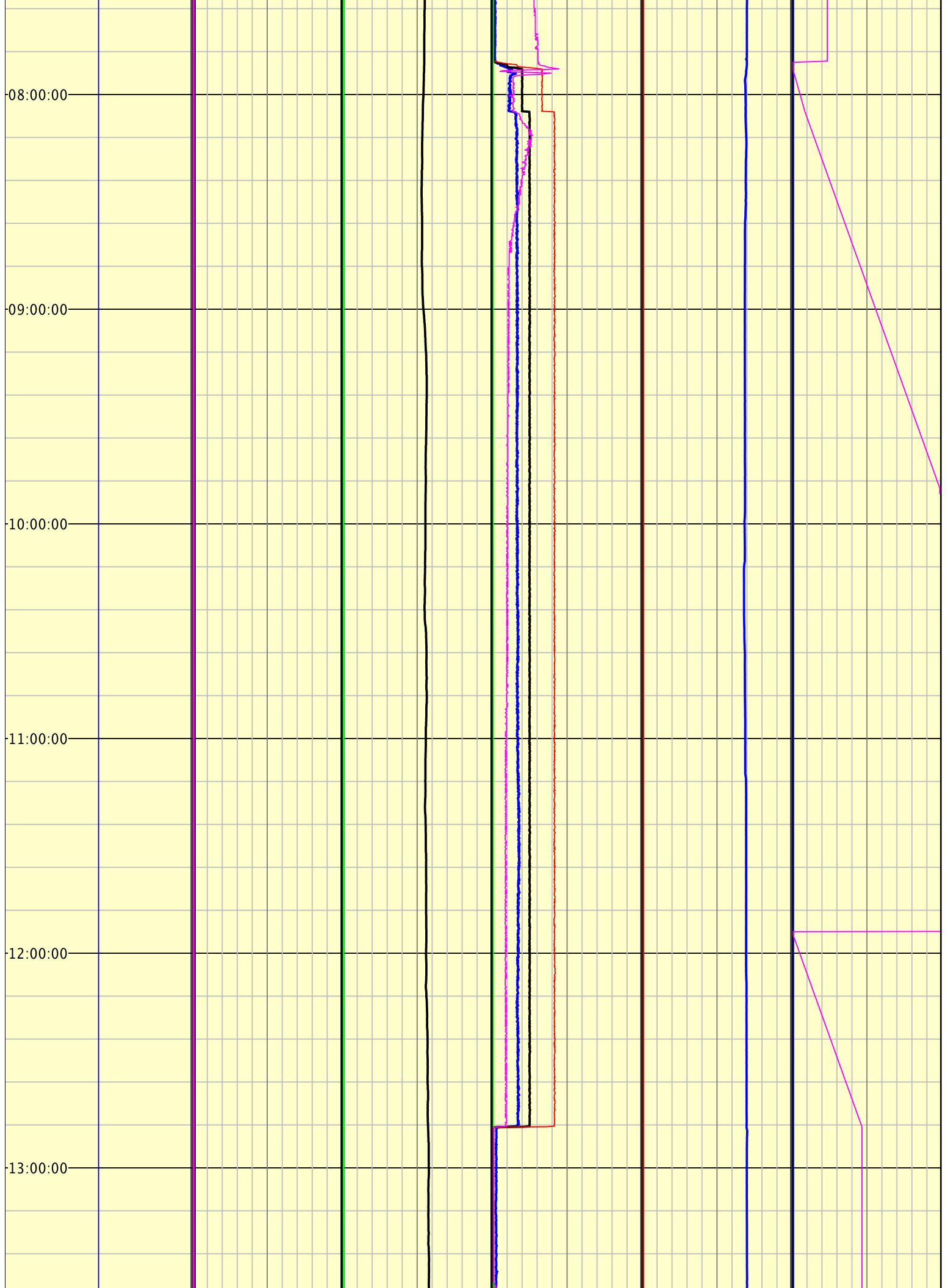


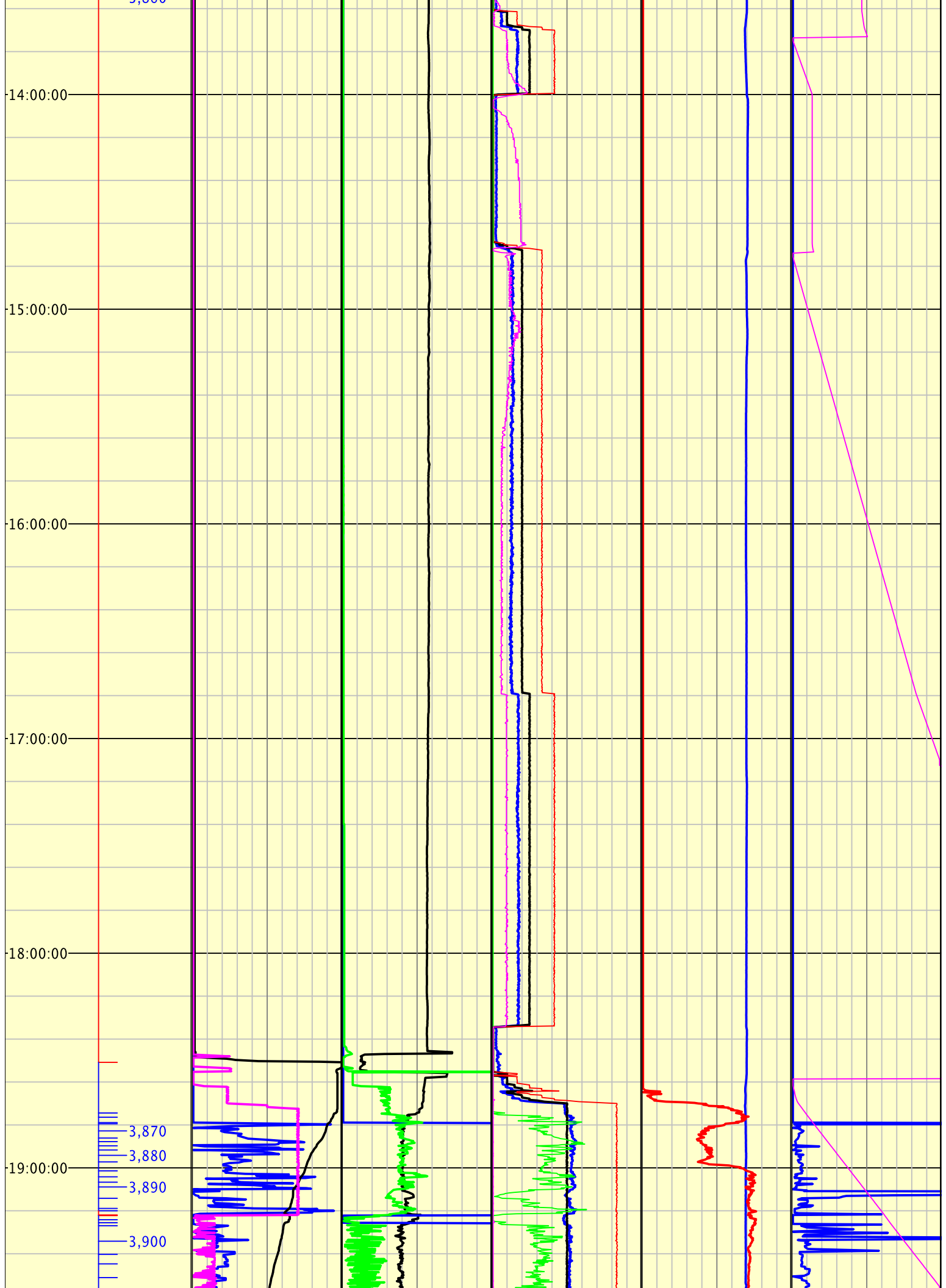


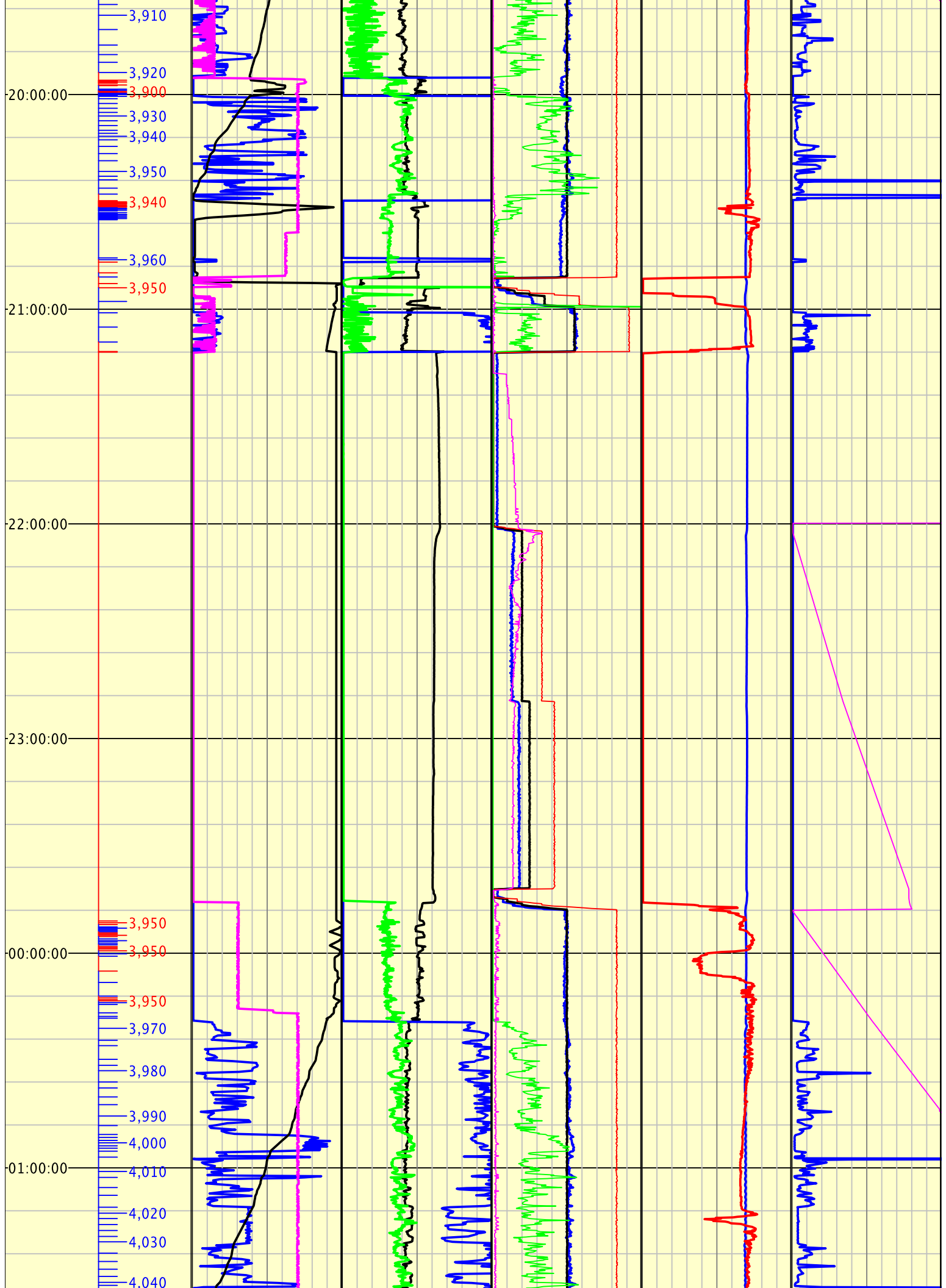


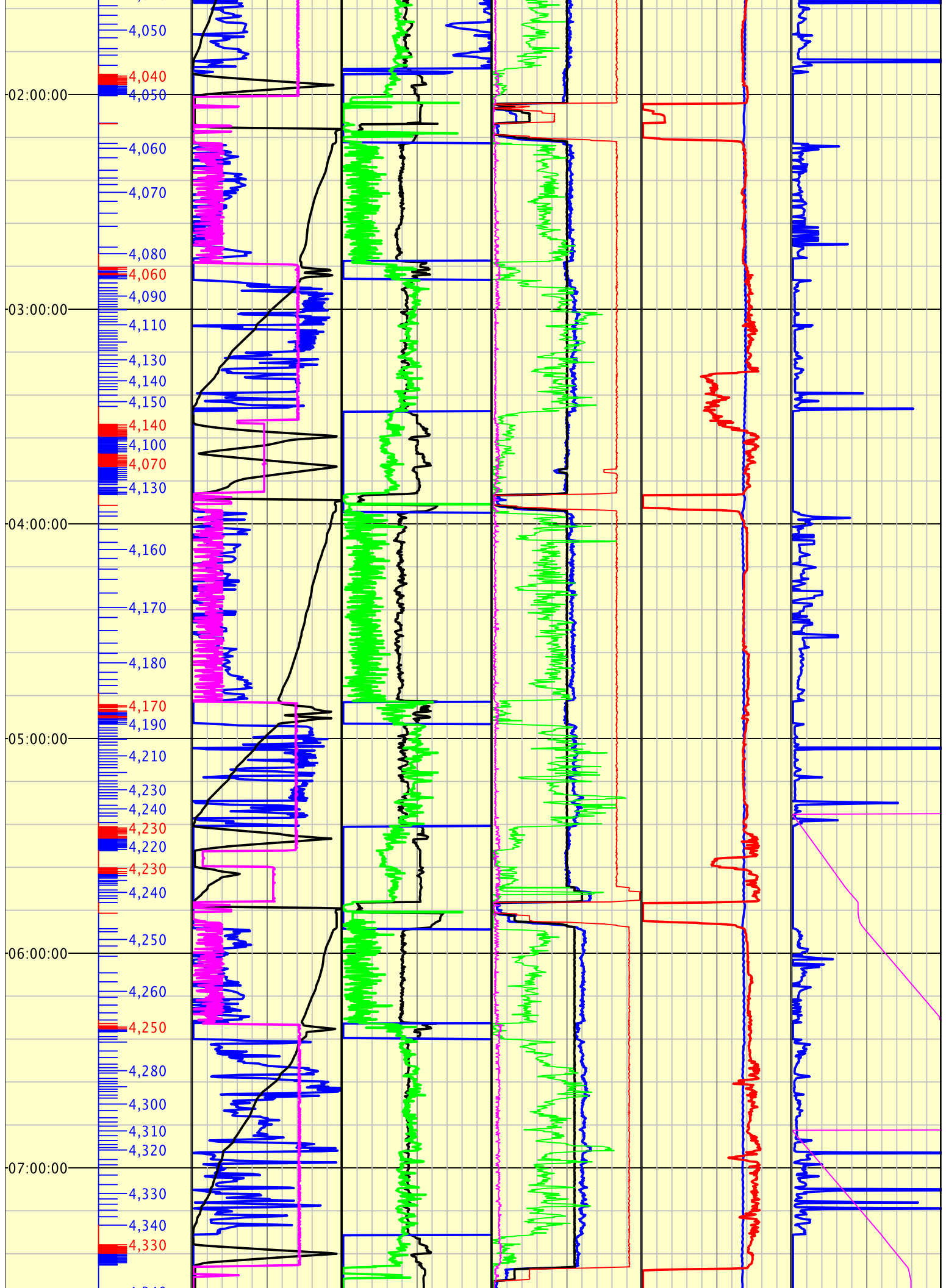


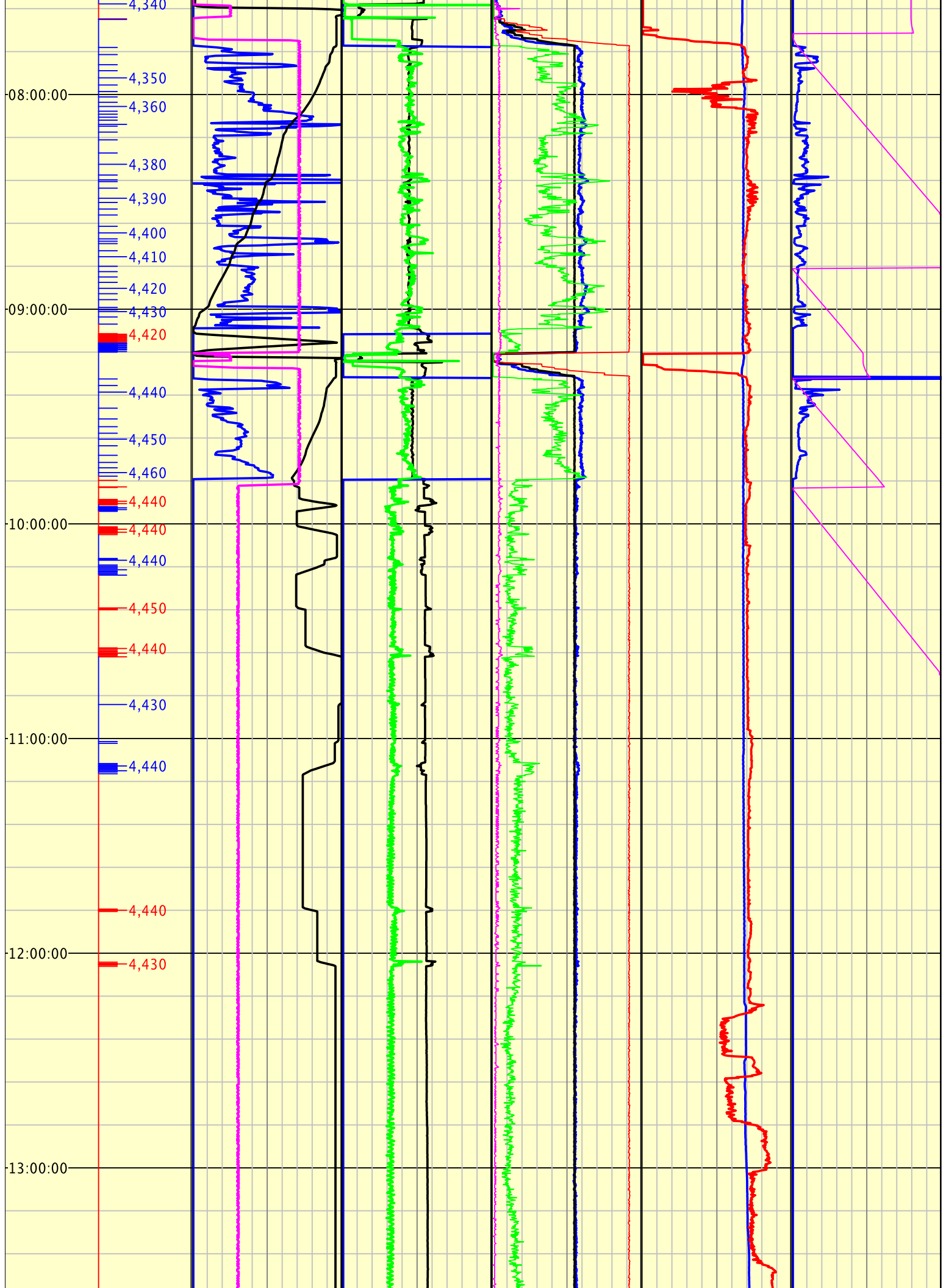


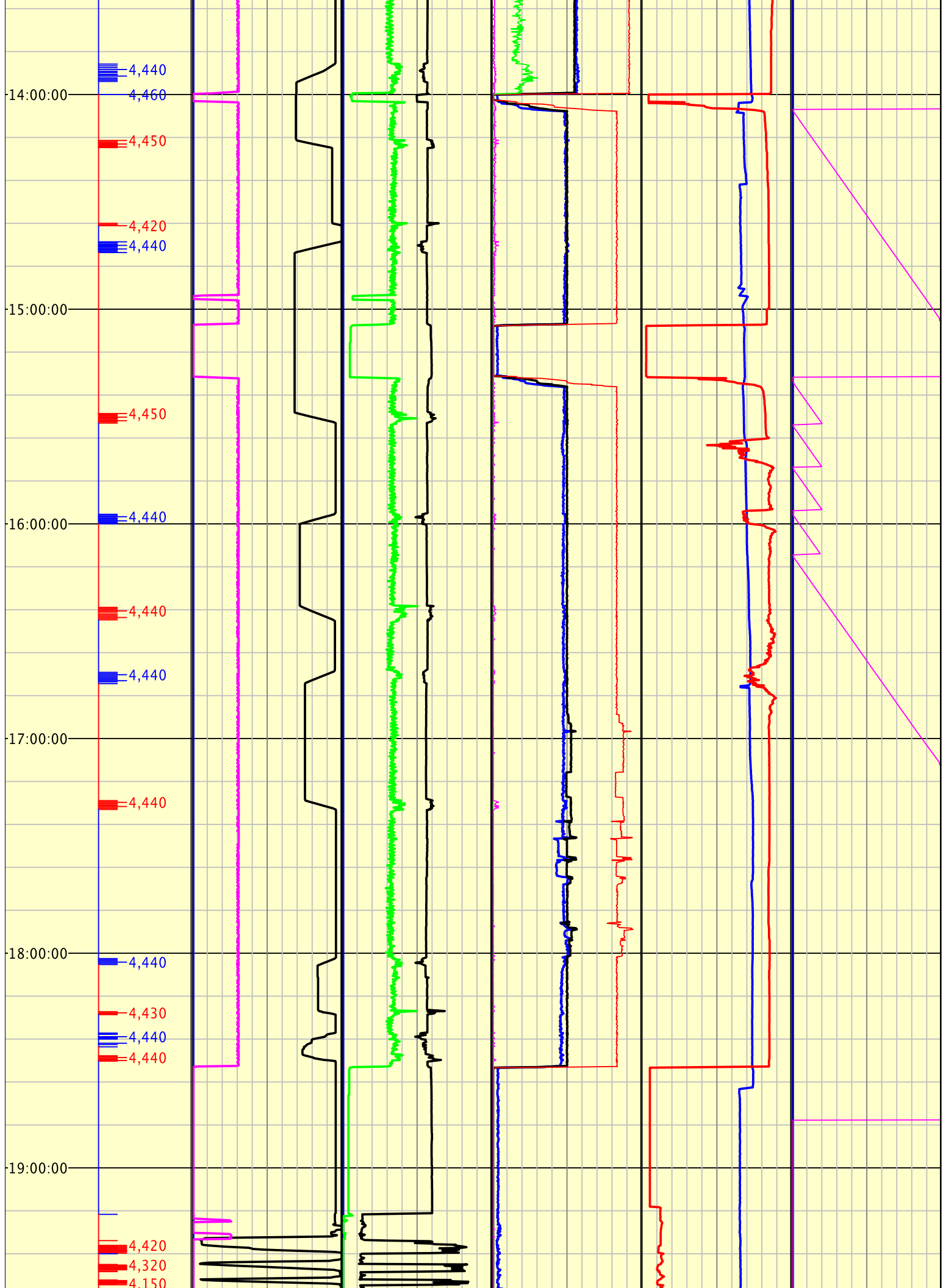


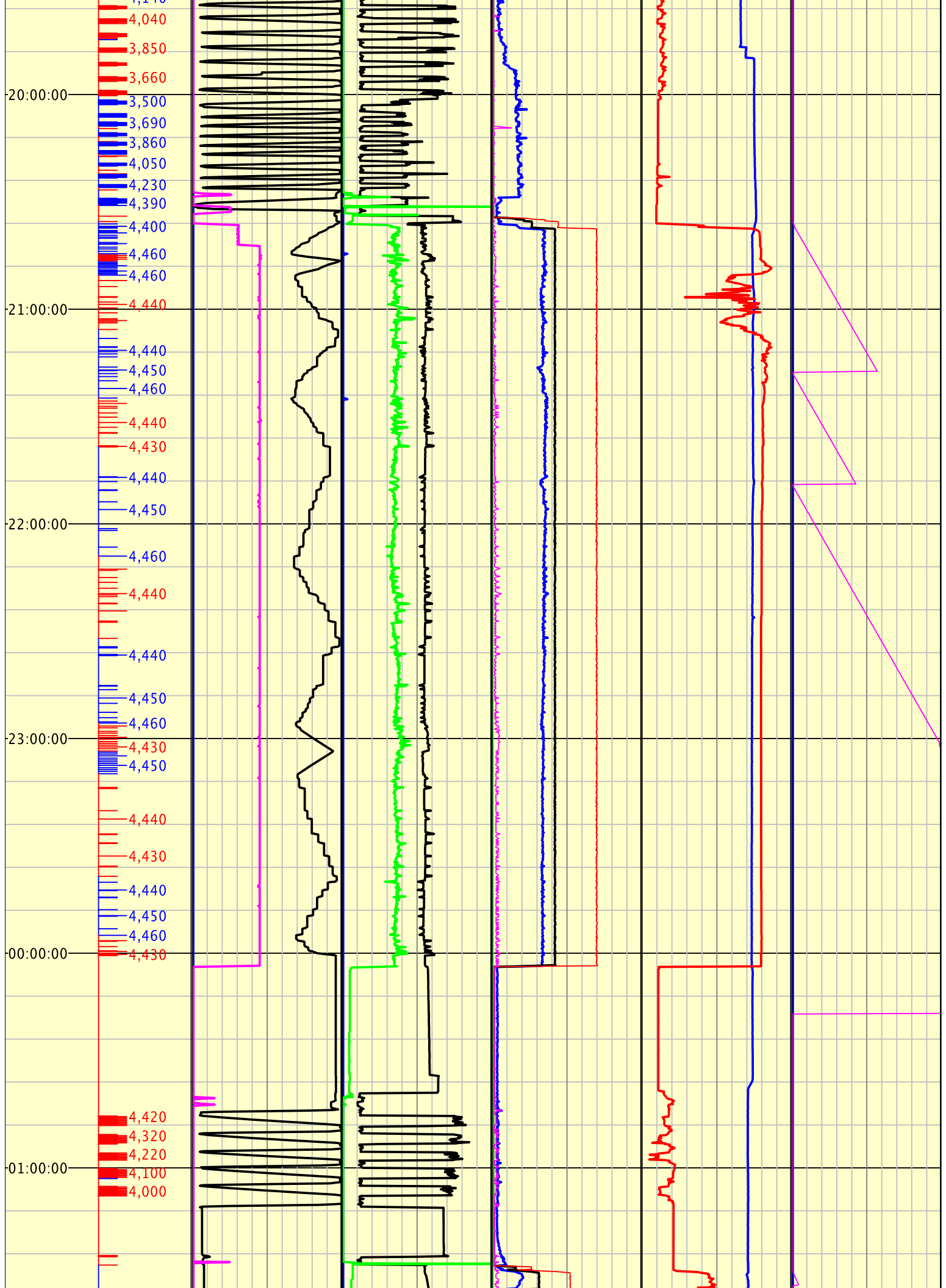


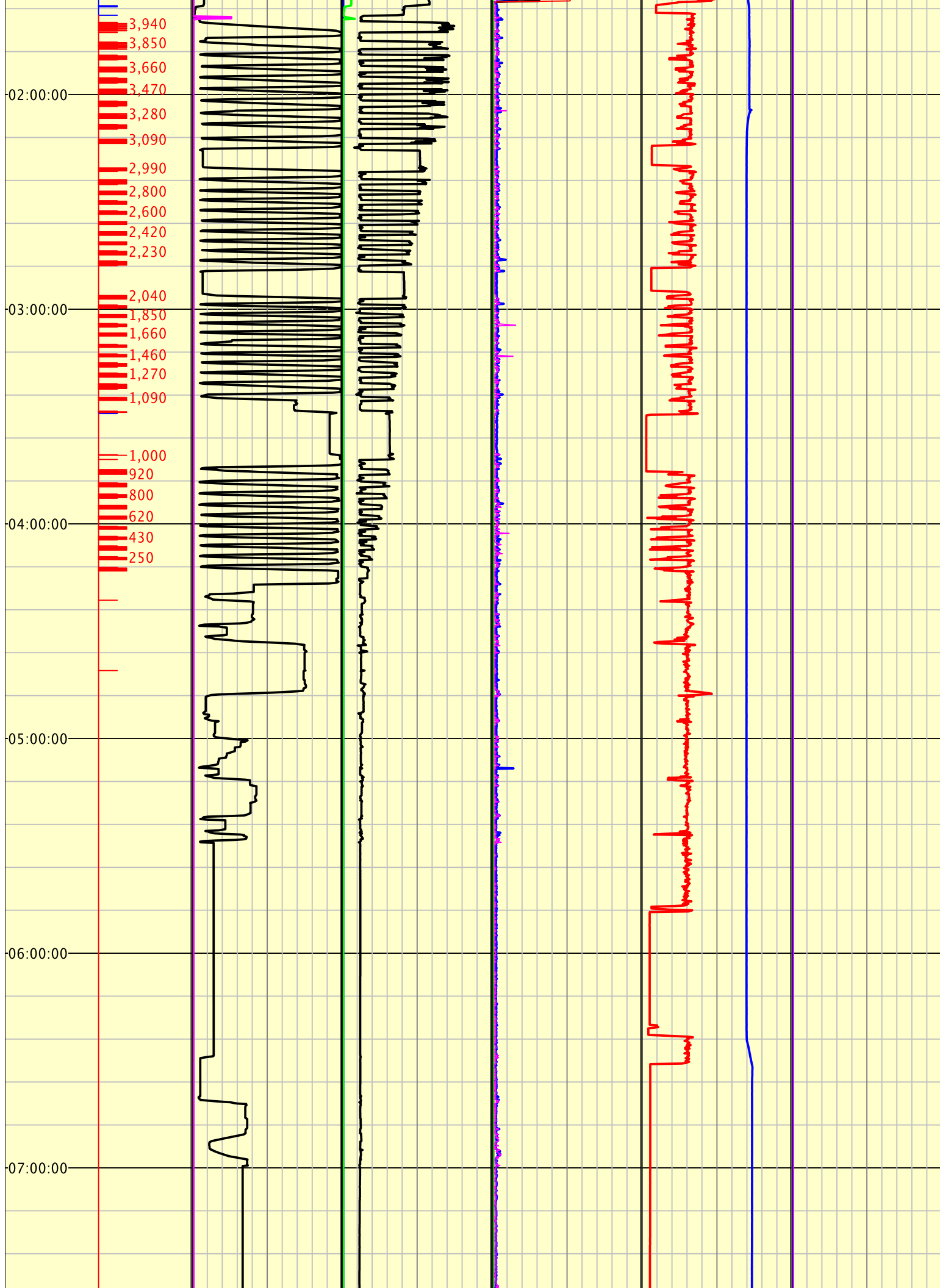


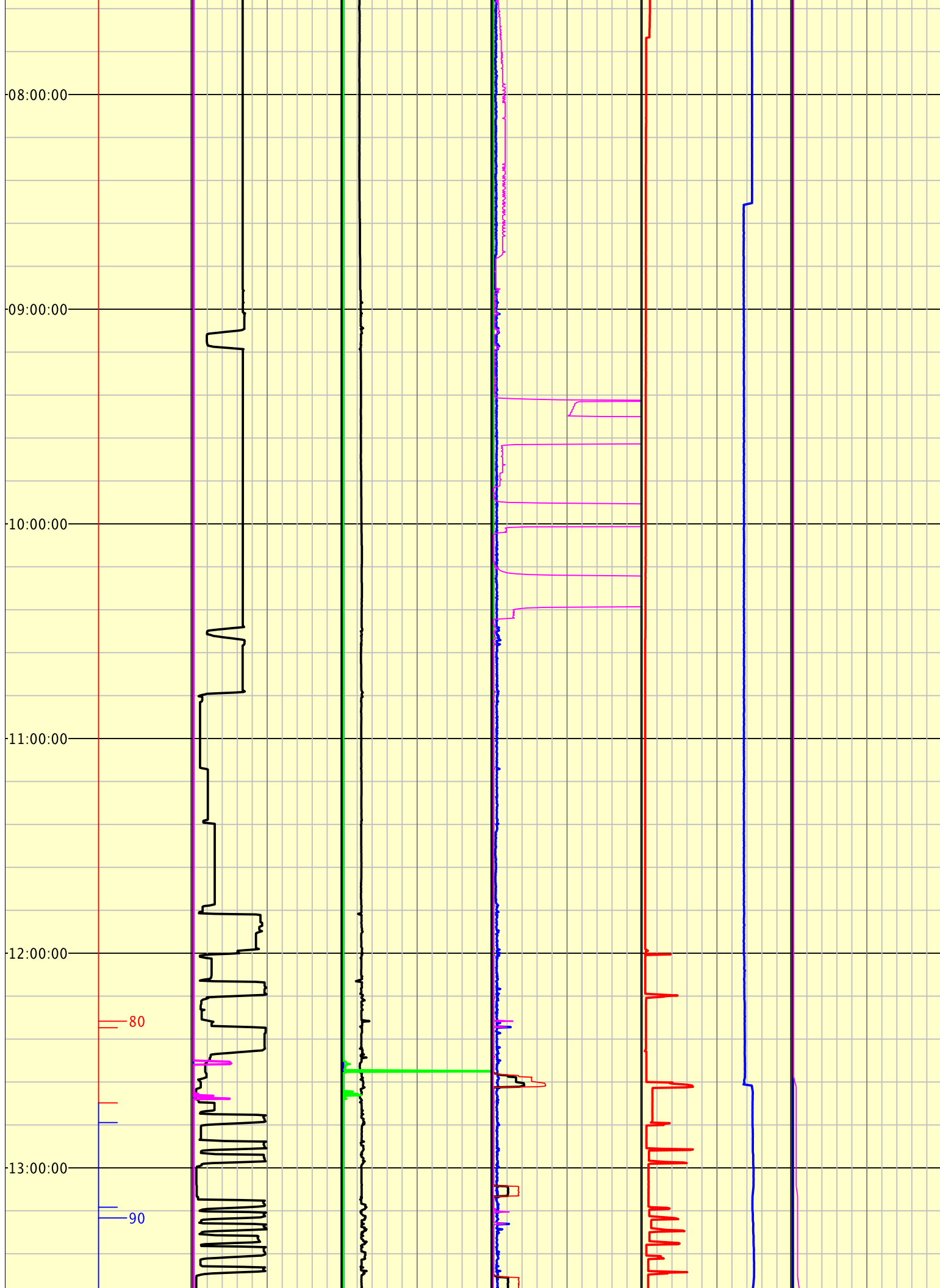


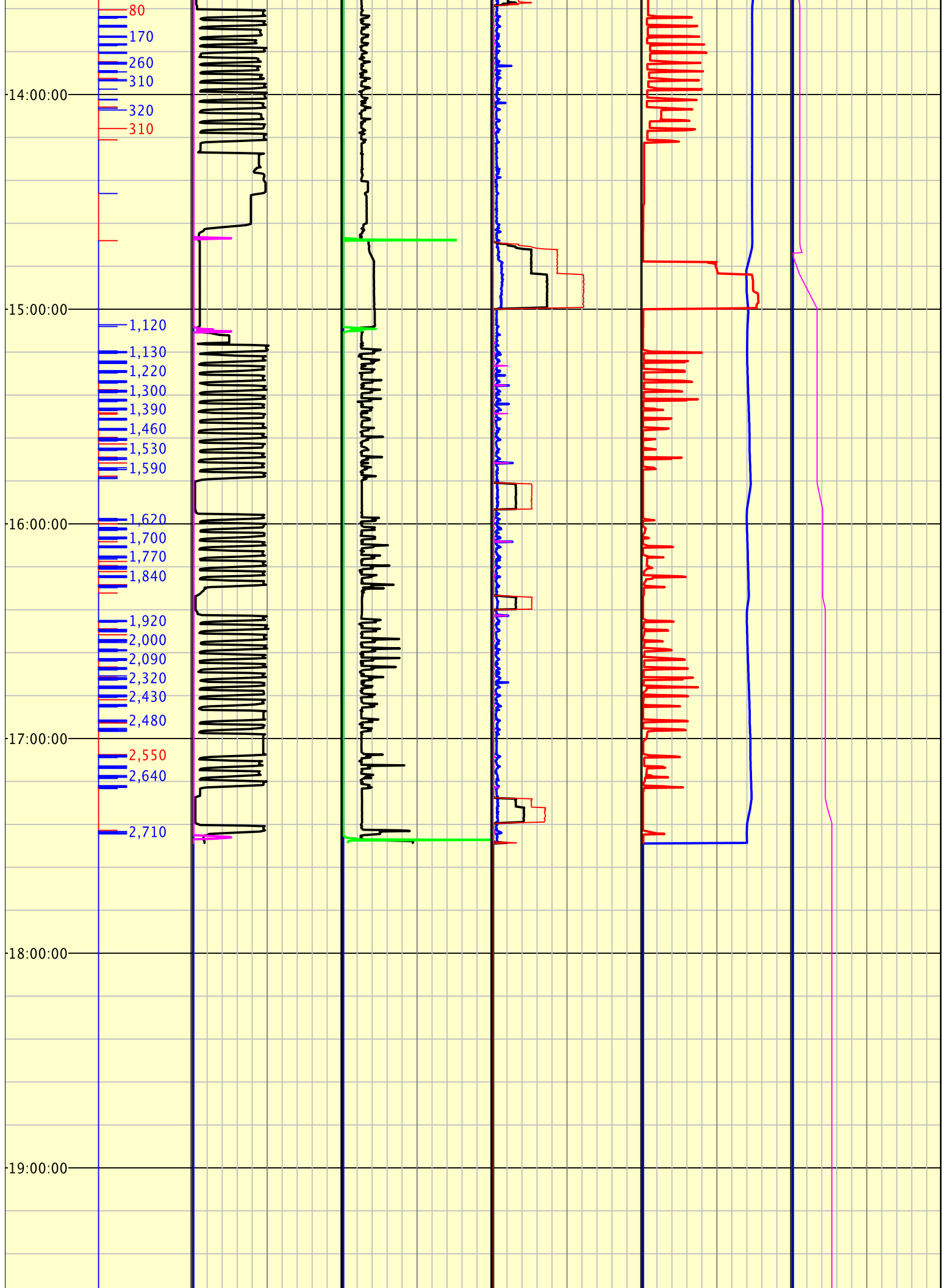


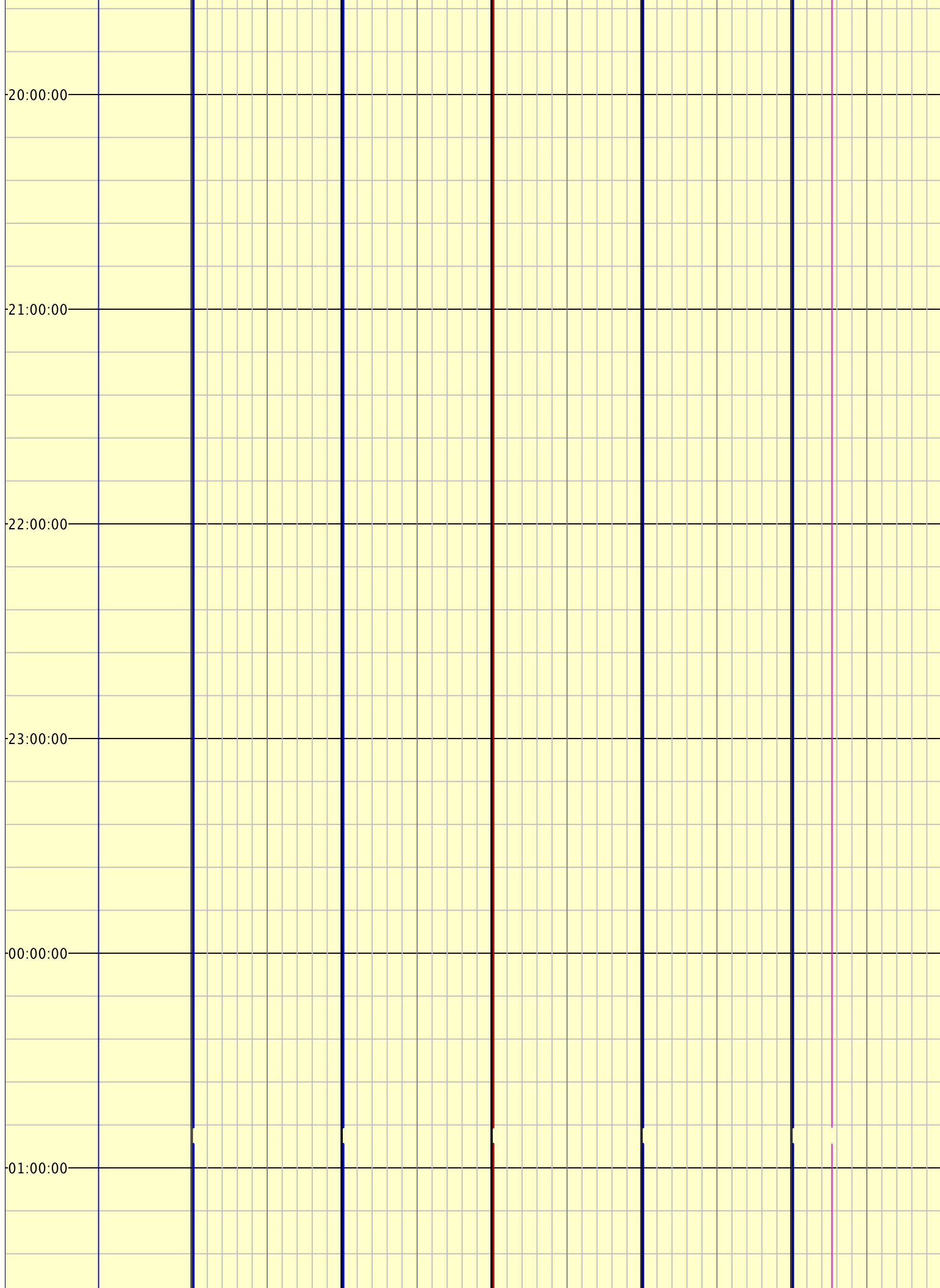












02:00:00

03:00:00

04:00:00

05:00:00

06:00:00

07:00:00

08:00:00

09:00:00

10:00:00

11:00:00

12:00:00

13:00:00

13:30:00 12-Apr-2012

The log data, interpretations and recommendations provided by Canrig are inferences and assumptions based on measurements of drilling fluids. Such inferences and assumptions are not infallible and reasonable professionals may differ. Canrig does not represent or warrant the accuracy, correctness or completeness of any log data, interpretations, recommendations or information provided by Canrig, its officers, agents or employees. Canrig does not and cannot guarantee the accuracy of any such interpretation of the log data, interpretations or recommendations and ENCANA CORPORATION is fully responsible for all decisions and actions it takes based on such log data, interpretations and recommendations.