



**WIRELINE**  
SERVICES

**CEMENT BOND  
GAMMA RAY  
CCL /TEMP  
LOG**

Company ENCANA OIL AND GAS USA INC  
Well TWIN CREEK 12-6A1 (F12E)  
Field MAMM CREEK  
County GARFIELD State COLORADO

Location: API # : 05-045-20394-0000  
SHL: 2515' FNL & 1615' FWL

Other Services  
NONE

Permanent Datum SEC 12 TWP 7S RGE 92W  
Log Measured From G.L. Elevation 6144.8'  
Drilling Measured From KELLY BUSHING 24' K.B.  
Elevation K.B. 6168.4'  
D.F. 6167.4'  
G.L. 6144.8'

Date 06-APR-12

Run Number	ONE	
Depth Driller	1145'	
Depth Logger	1034'	
Bottom Logged Interval	1034'	
Top Log Interval	SURFACE	
Open Hole Size	N/A	
Type Fluid	WATER	
Density / Viscosity	8.3#	
Max. Recorded Temp.	68.5 DEG F	
Estimated Cement Top	SEE LOG	
Time Well Ready	14:00	
Time Logger on Bottom	14:30	
Equipment Number	P-74	
Location	GRAND JUNCTION	
Recorded By	MATT BROWN	
Witnessed By	TONY KETTERLING	

Borehole Record				Tubing Record			
Bit	From	To	Size	Weight	From	To	

Casing Record	Size	Wgt/Ft	Top	Bottom
Surface String	9 5/8"	36#	SURFACE	1145'
Prot. String				
Production String				
Liner				

<<< Fold Here >>>

All interpretations are opinions based on inferences from electrical or other measurements and we cannot and do not guarantee the accuracy or correctness of any interpretation, and we shall not, except in the case of gross or willful negligence on our part, be liable or responsible for any loss, costs, damages, or expenses incurred or sustained by anyone resulting from any interpretation made by any of our officers, agents or employees. These interpretations are also subject to our general terms and conditions set out in our current Price Schedule.

Comments

NO LOG AVAILABLE FOR CORRELATION

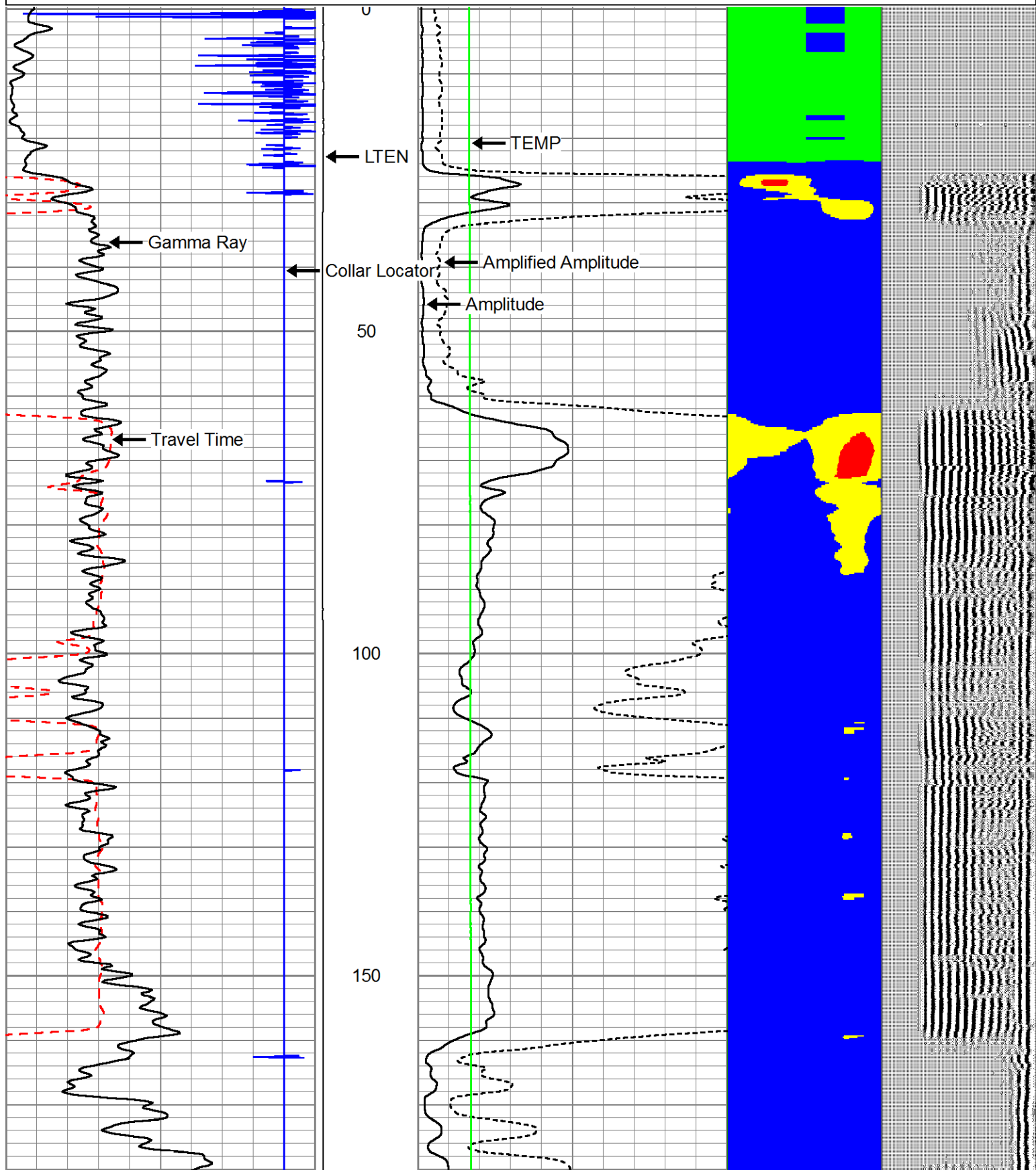
THANK YOU FOR USING E & P WIRELINE SERVICES  
(970) 245-5563

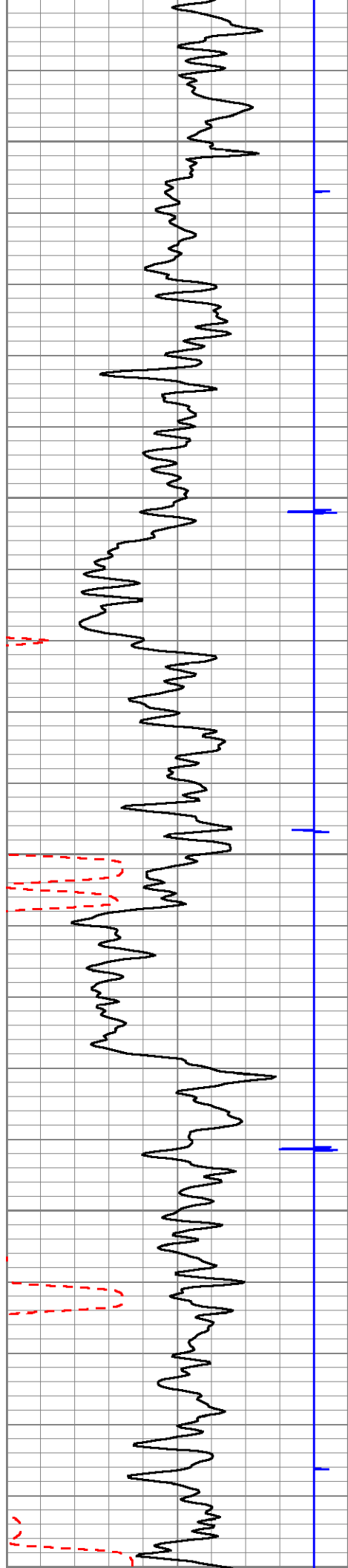
MAIN PASS



Database File: twincreek\_12-6a1.db  
Dataset Pathname: pass4  
Presentation Format: sectorma  
Dataset Creation: Fri Apr 06 14:30:00 2012 by Log SCH 110722  
Charted by: Depth in Feet scaled 1:240

350	Travel Time (usec)	250	LTEN	0	Amplified Amplitude (mV)	20	Cement Map	VDL
-9	Collar Locator	1		0	Amplitude (mV)	100	0 100	
0	Gamma Ray (cps)	150		0	TEMP (degF)	300		





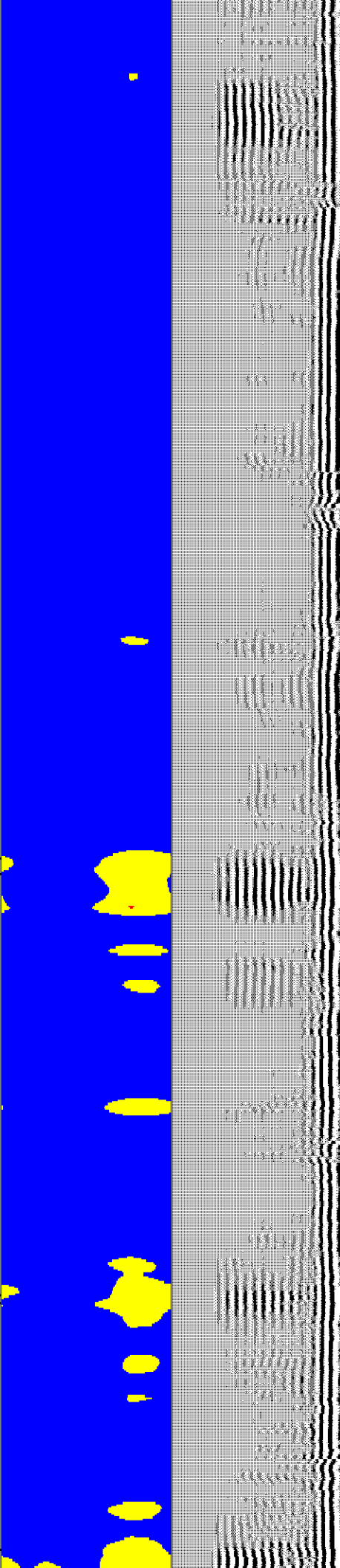
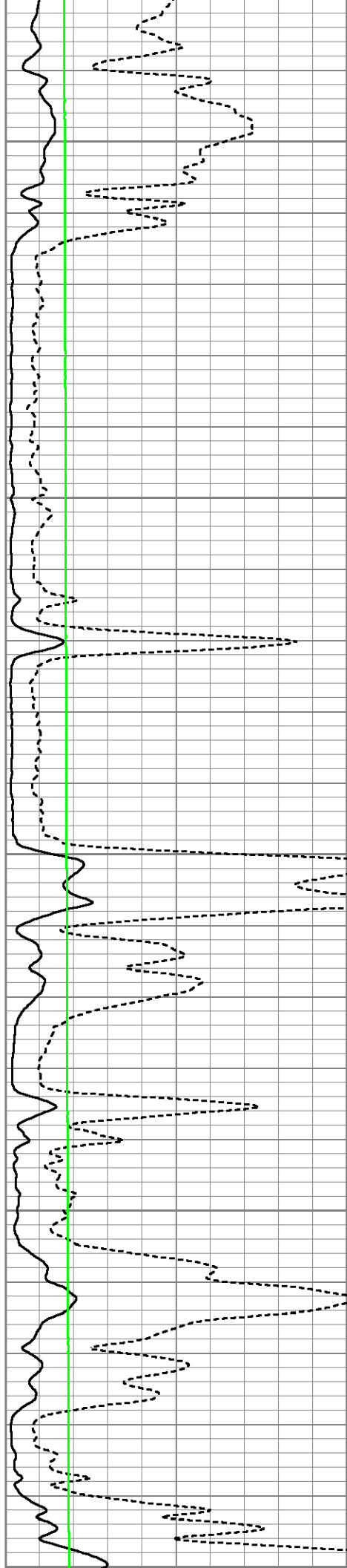
200

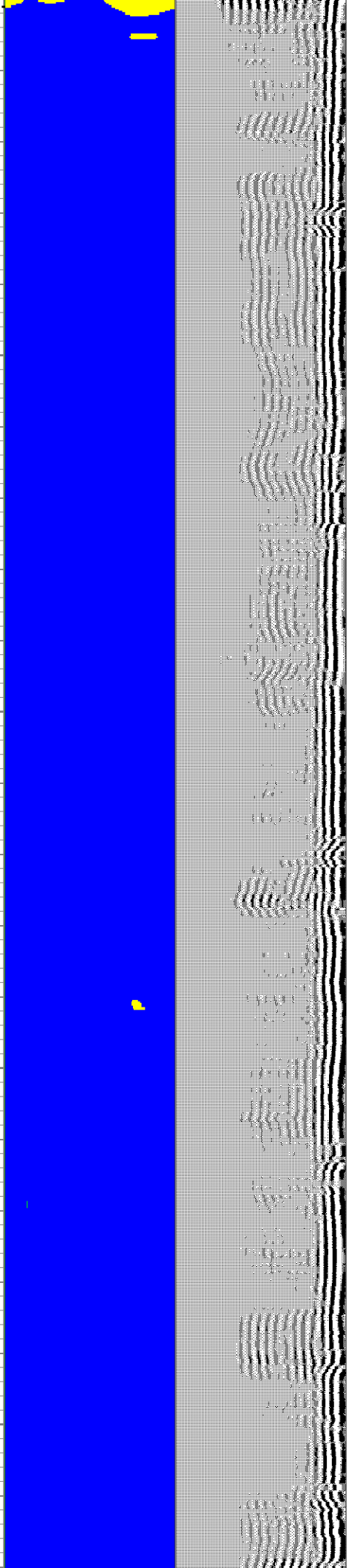
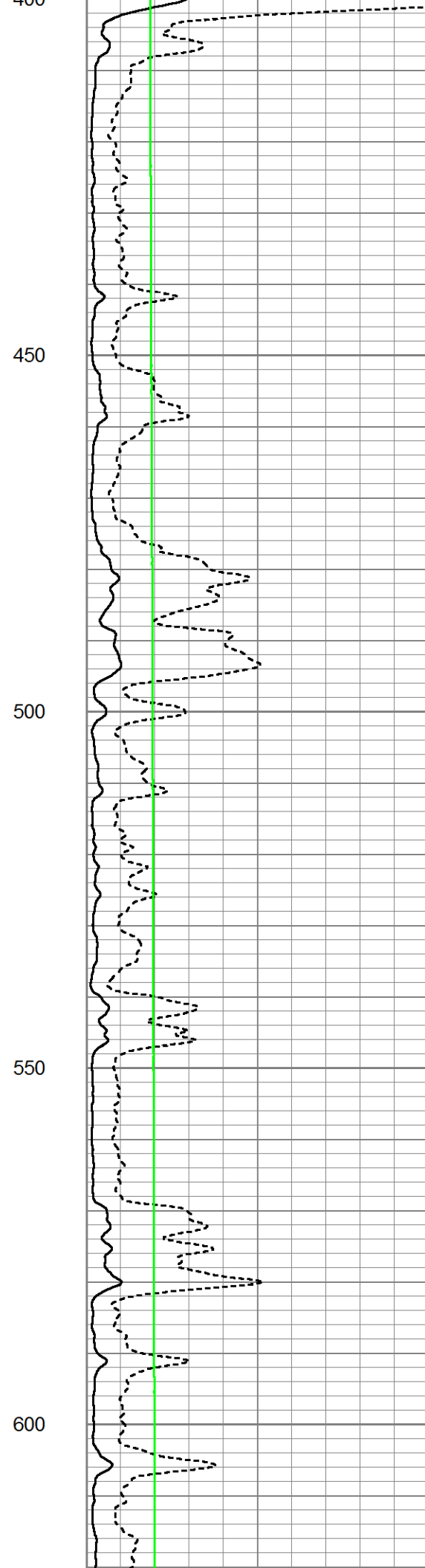
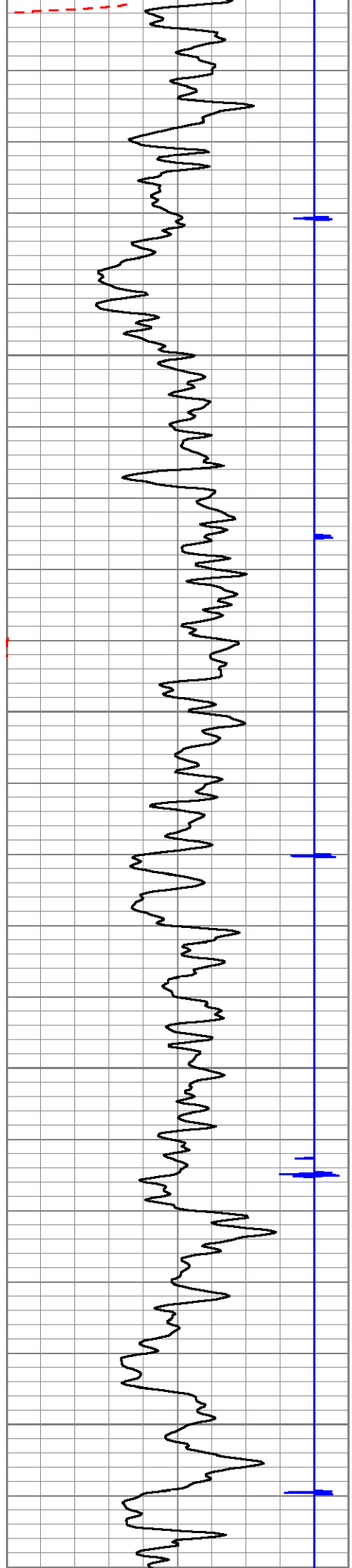
250

300

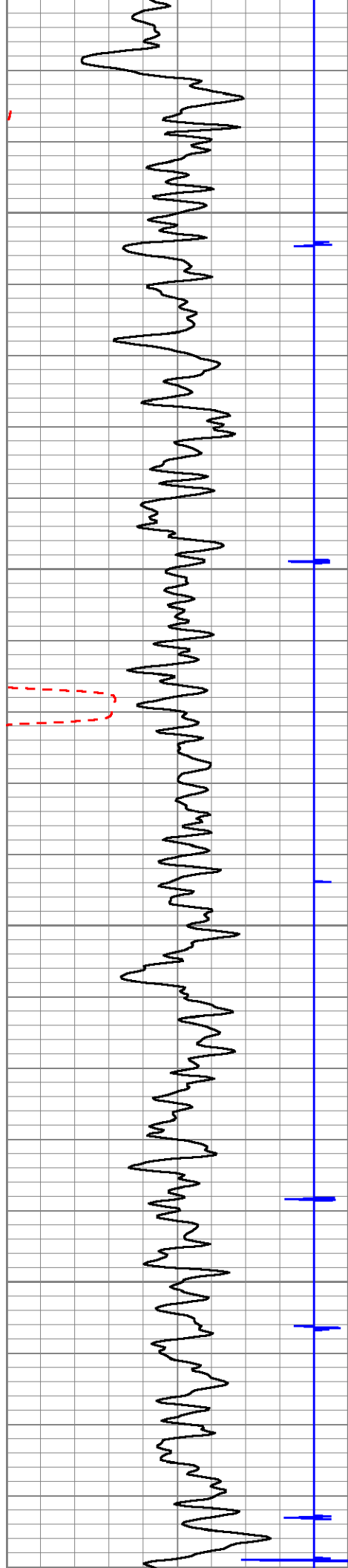
350

400







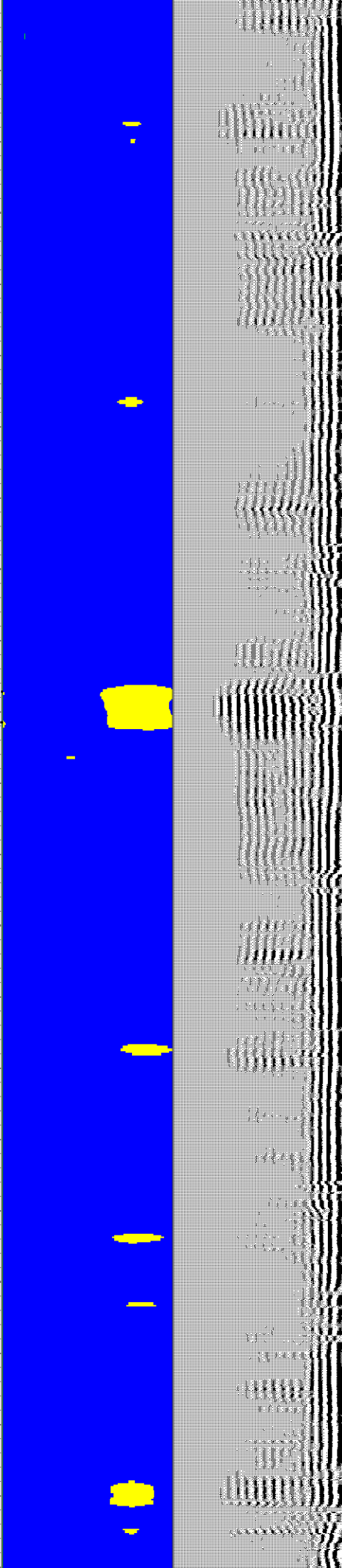
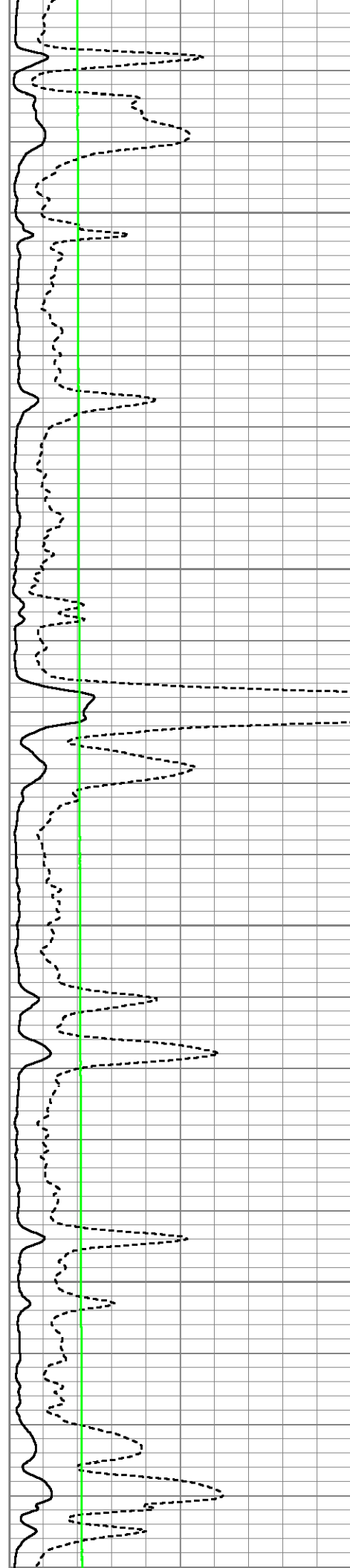


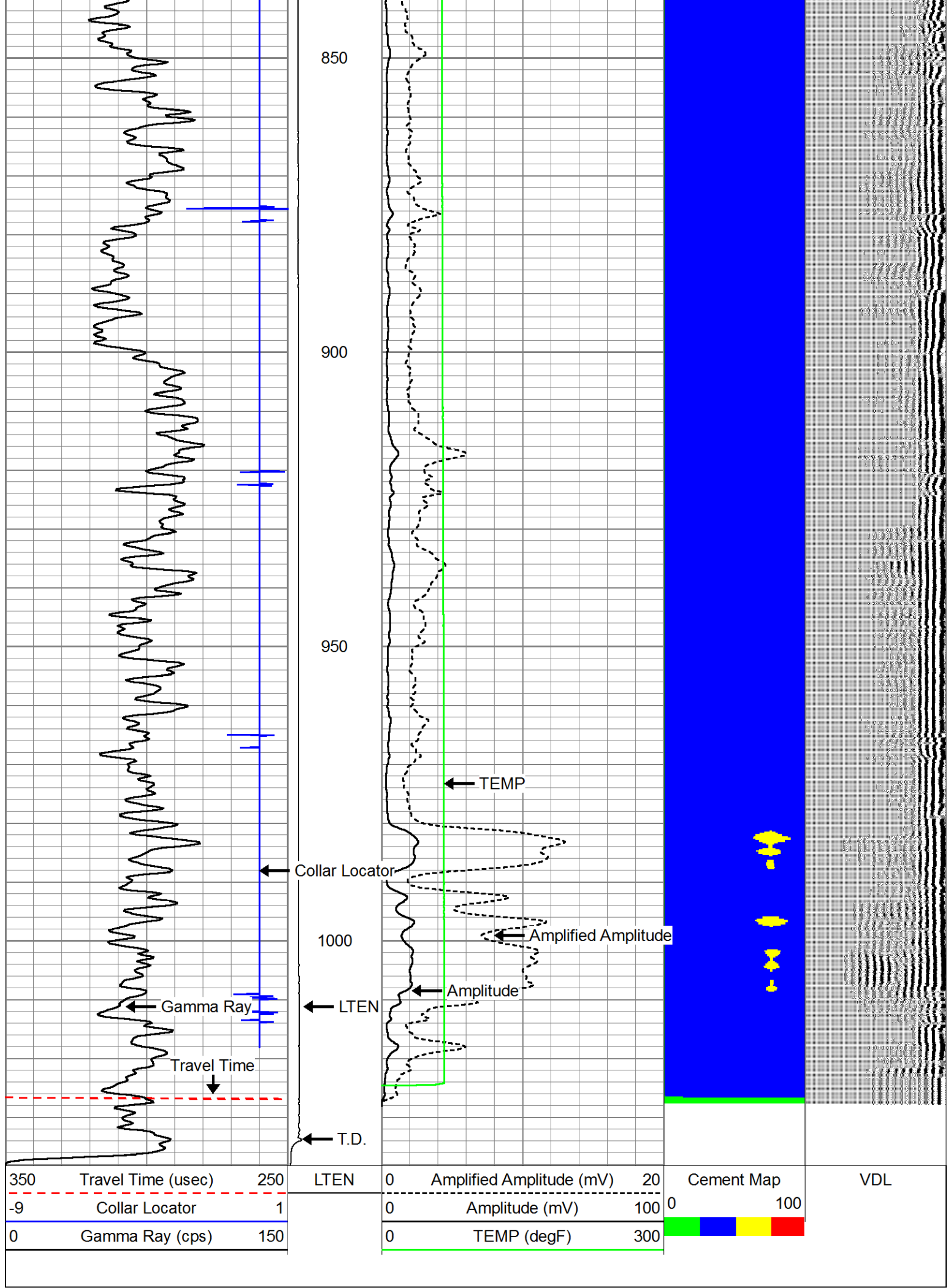
650

700

750

800



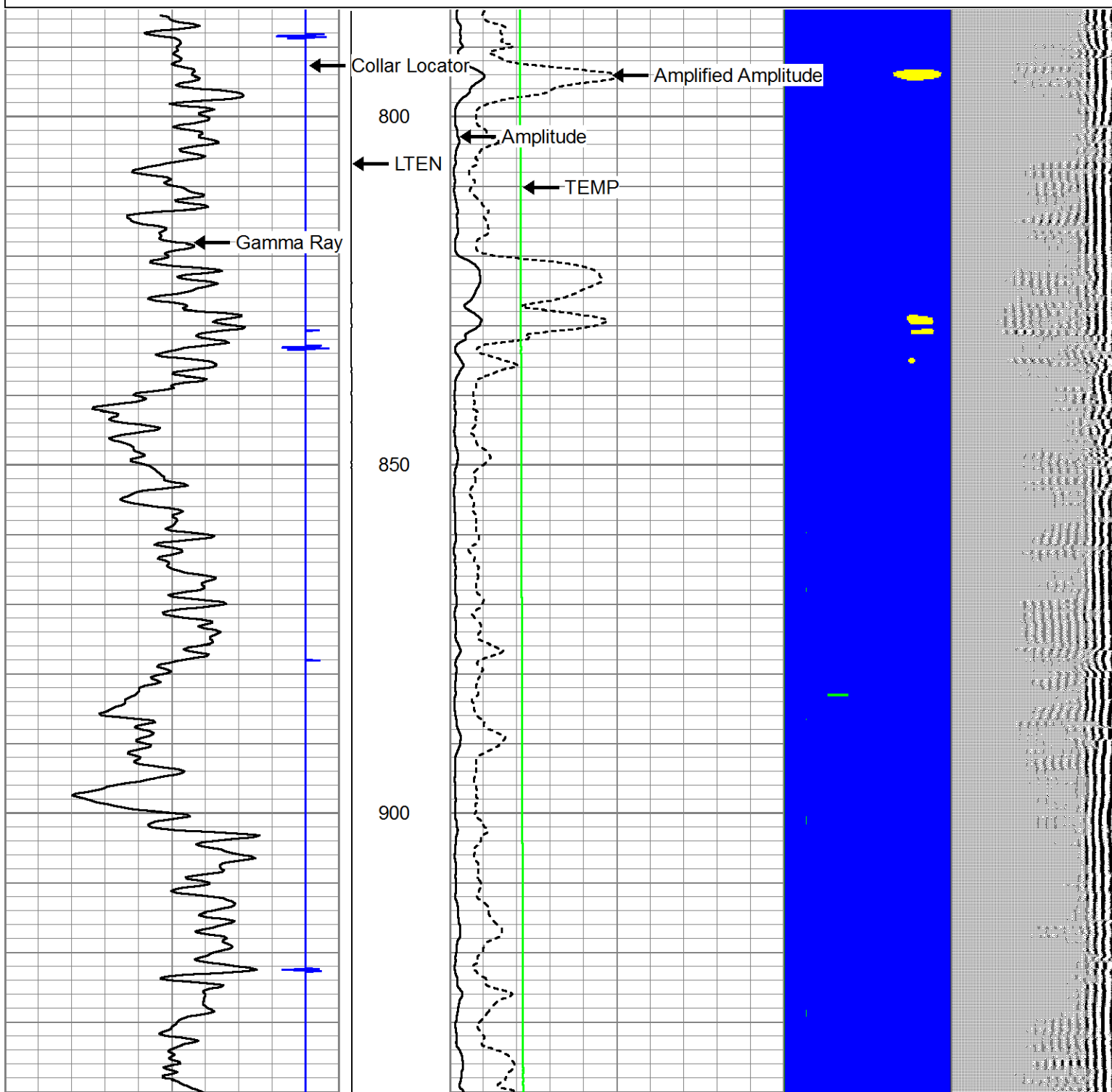


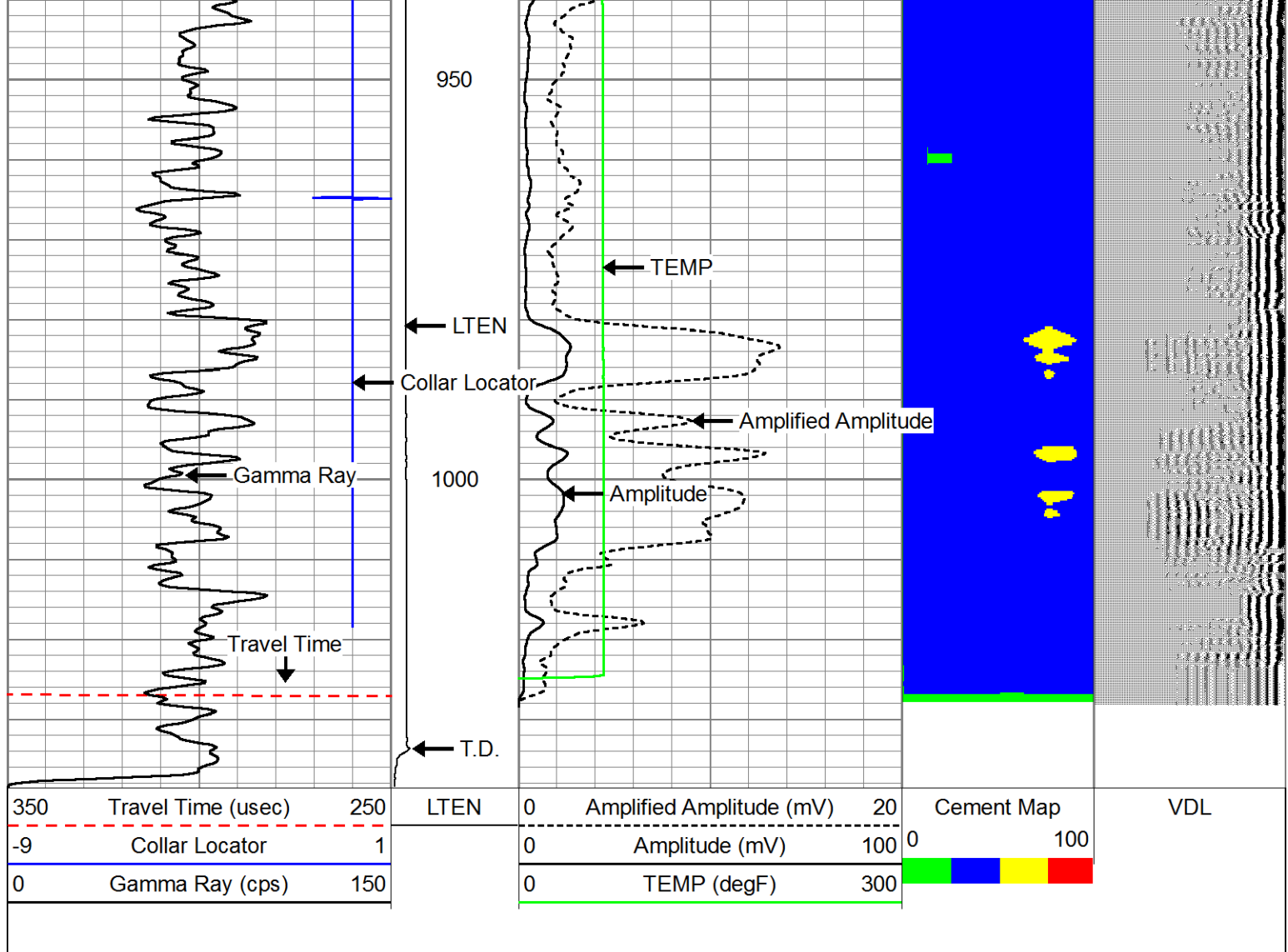


# REPEAT PASS

Database File: twincreek\_12-6a1.db  
Dataset Pathname: pass3  
Presentation Format: sectorma  
Dataset Creation: Fri Apr 06 14:23:05 2012 by Log SCH 110722  
Charted by: Depth in Feet scaled 1:240

350	Travel Time (usec)	250	LTEN	0	Amplified Amplitude (mV)	20	Cement Map	VDL
-9	Collar Locator	1		0	Amplitude (mV)	100	0 100	
0	Gamma Ray (cps)	150		0	TEMP (degF)	300		





Sensor	Offset (ft)	Schematic	Description	Len (ft)	OD (in)	Wt (lb)
CCL	19.94		CCL-MTEKCOHT (11) 2 3/4 TEKCO HI TEMP LOGGING CCL	1.83	2.75	15.00
			TITAN 2 3/4\" TITAN BOW SPRING	2.92	2.75	15.00
TEMP	13.65					
WVFS1	12.23					
WVFS2	12.23					
WVES3	12.23					
			SCBL-TEKSECTEMP (SCBLTEMP) TEKCO 2 3/4\" SECTOR/TEMP TOOL	9.04	2.75	90.00



