

**WIRELINE**
SERVICES**CEMENT BOND
GAMMA RAY
CCL /TEMP
LOG****Company** ENCANA OIL AND GAS USA INC
Well TWIN CREEK 12-3D1 (F12E)
Field MAMM CREEK
County GARFIELD **State** COLORADO**Location:** API # : 05-045-20386-0000
SHL: 2527' FNL & 1614' FWL**Other Services**
SET PLUG

SEC 12 TWP 7S RGE 92W

Elevation**Permanent Datum** G.L. **Elevation** 6145'
Log Measured From KELLY BUSHING 24'
Drilling Measured From K.B.K.B. 6169'
D.F. 6168'
G.L. 6145'**Date** 06-APR-12

Run Number	ONE		
Depth Driller	6008'		
Depth Logger	2974'		
Bottom Logged Interval	2974'		
Top Log Interval	SURFACE		
Open Hole Size	N/A		
Type Fluid	WATER		
Density / Viscosity	8.3#		
Max. Recorded Temp.	127 DEG F		
Estimated Cement Top	SEE LOG		
Time Well Ready	05:30		
Time Logger on Bottom	06:15		
Equipment Number	P-74		
Location	GRAND JUNCTION		
Recorded By	MATT BROWN		
Witnessed By	TONY KETTERLING		

Borehole Record				Tubing Record			
Bit	From	To	Size	Weight	From	To	

Casing Record	Size	Wgt/Ft	Top	Bottom
Surface String	9 5/8"	36#	SURFACE	1149'
Prot. String				
Production String	4.5"	11.6#	SURFACE	5990'
Liner				

<<< Fold Here >>>

All interpretations are opinions based on inferences from electrical or other measurements and we cannot and do not guarantee the accuracy or correctness of any interpretation, and we shall not, except in the case of gross or willful negligence on our part, be liable or responsible for any loss, costs, damages, or expenses incurred or sustained by anyone resulting from any interpretation made by any of our officers, agents or employees. These interpretations are also subject to our general terms and conditions set out in our current Price Schedule.

Comments

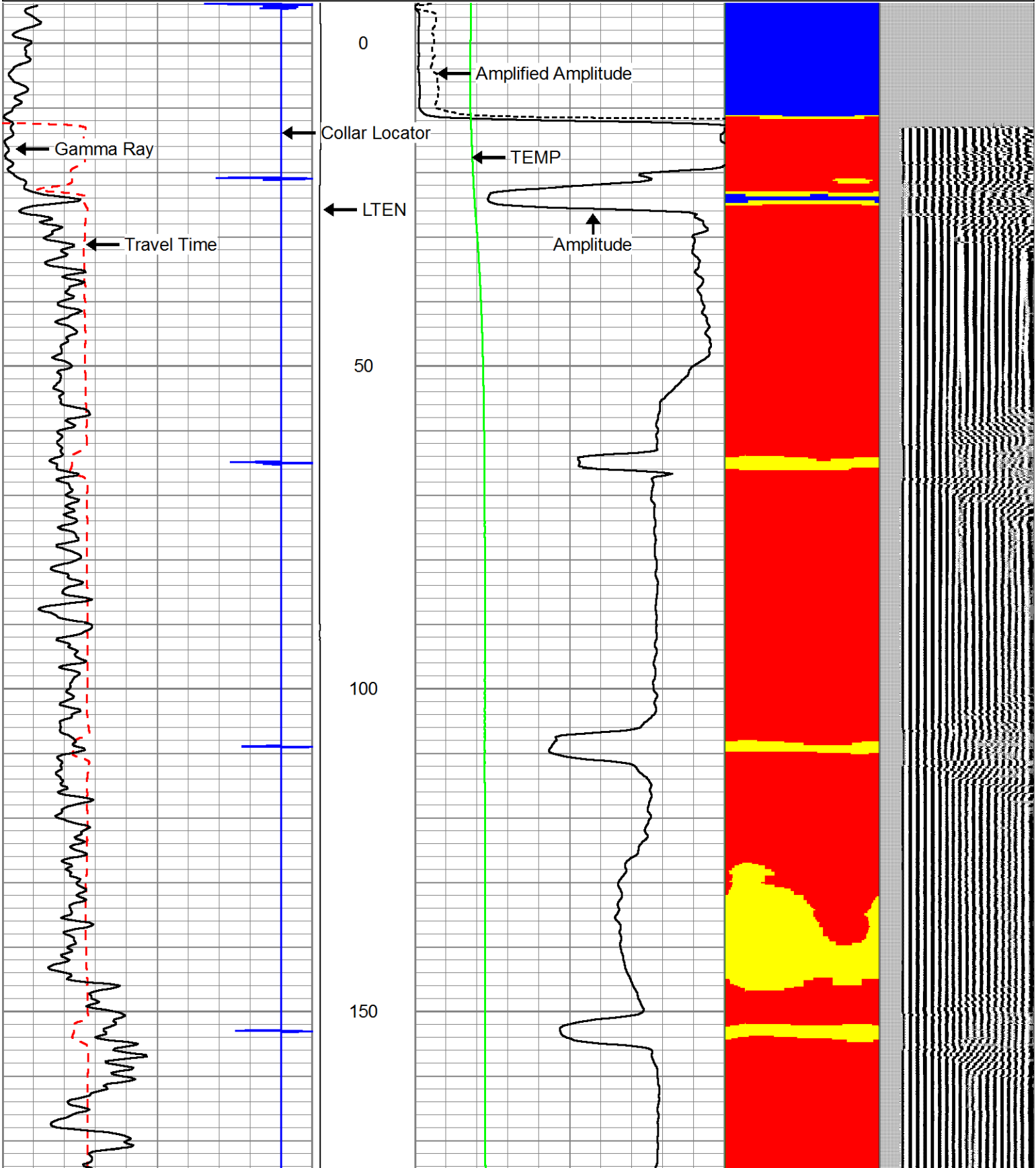
LOG CORRELATED TO MESA WIRELINE CEMENT BOND LOG DATED 27 MAR 2012

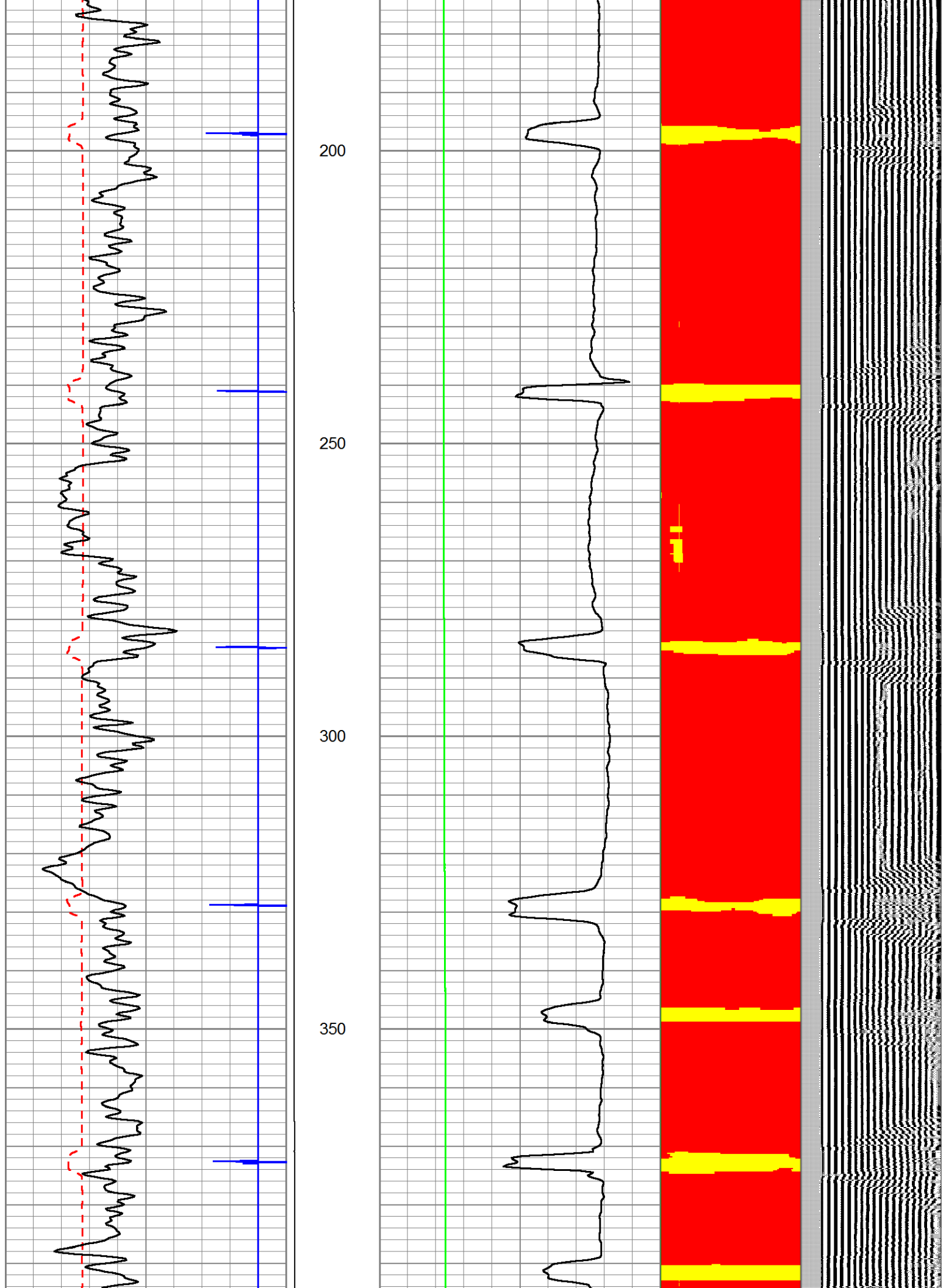
THANK YOU FOR USING E & P WIRELINE SERVICES
(970) 245-5563

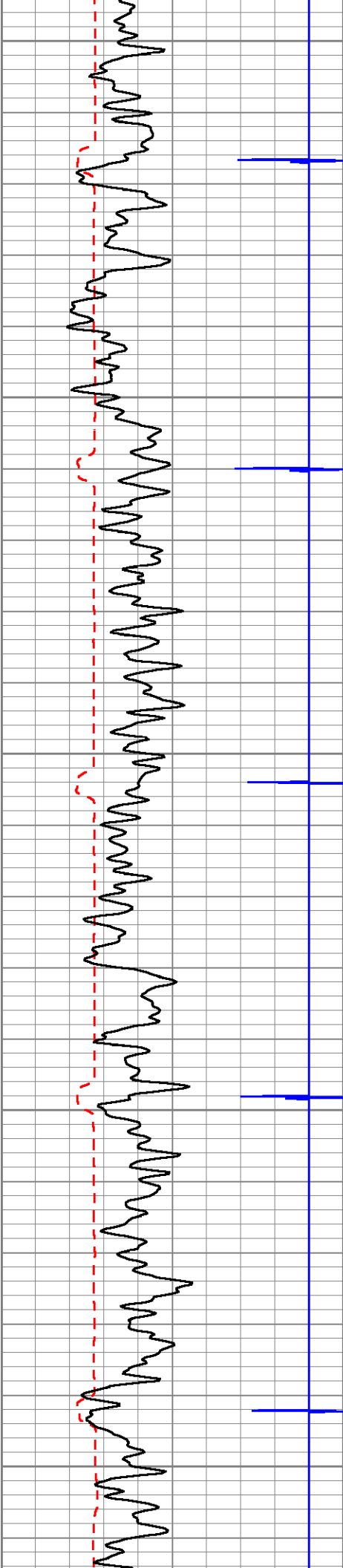
MAIN PASS



250	Travel Time (usec)	150	LTEN	0	Amplified Amplitude (mV)	20	Cement Map	VDL
-9	Collar Locator	1		0	Amplitude (mV)	100	0100	
0	Gamma Ray (cps)	150		0	TEMP (degF)	300		







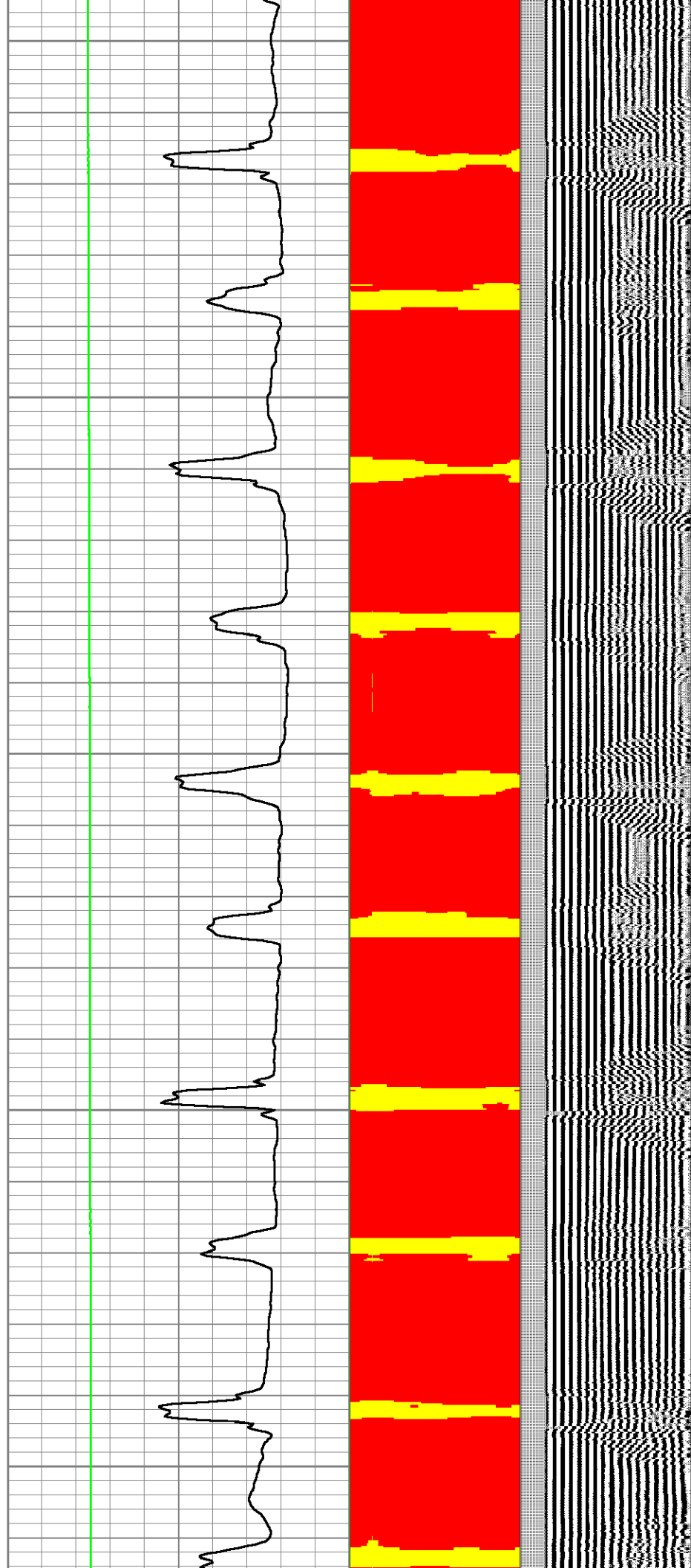
400

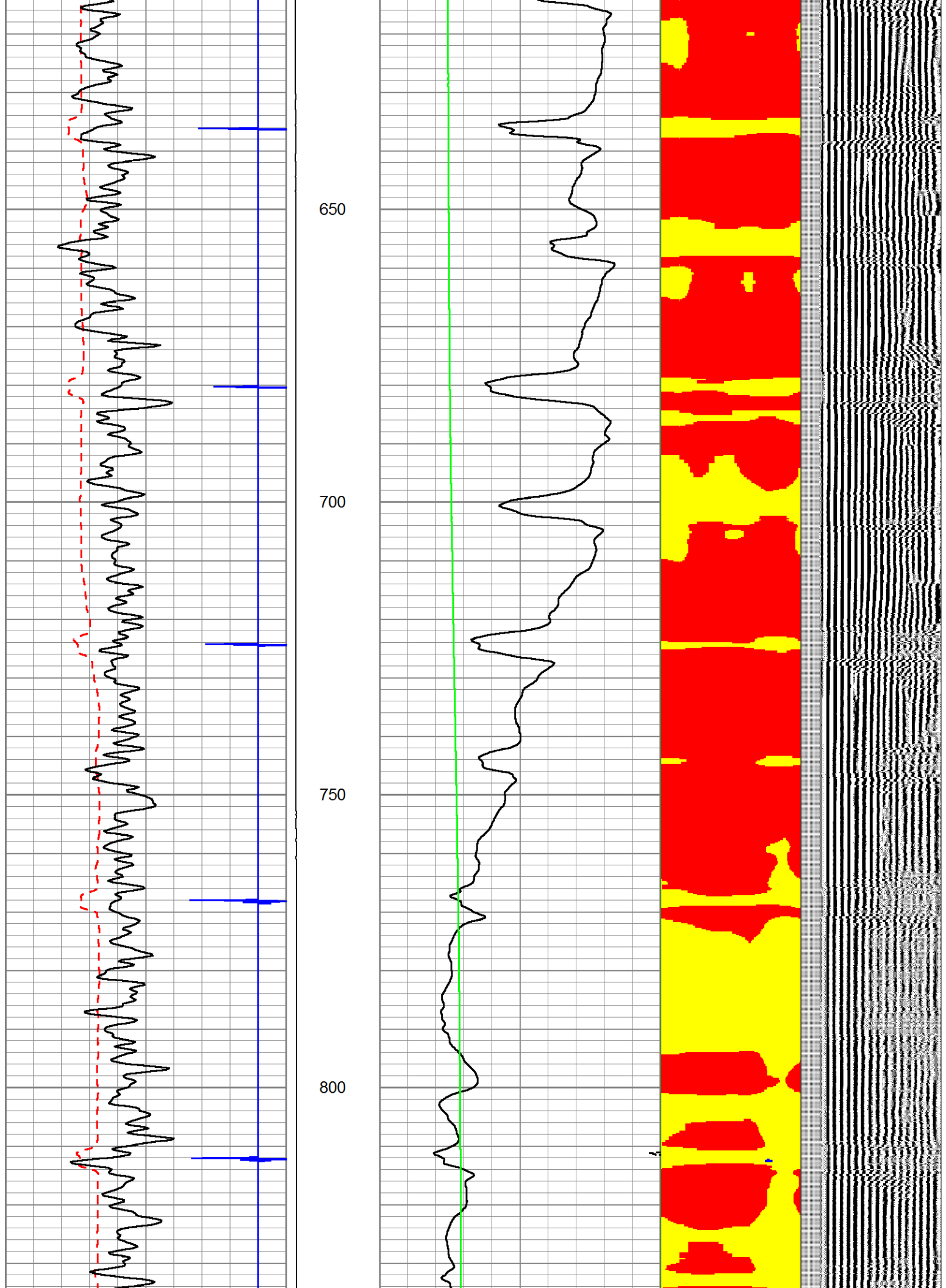
450

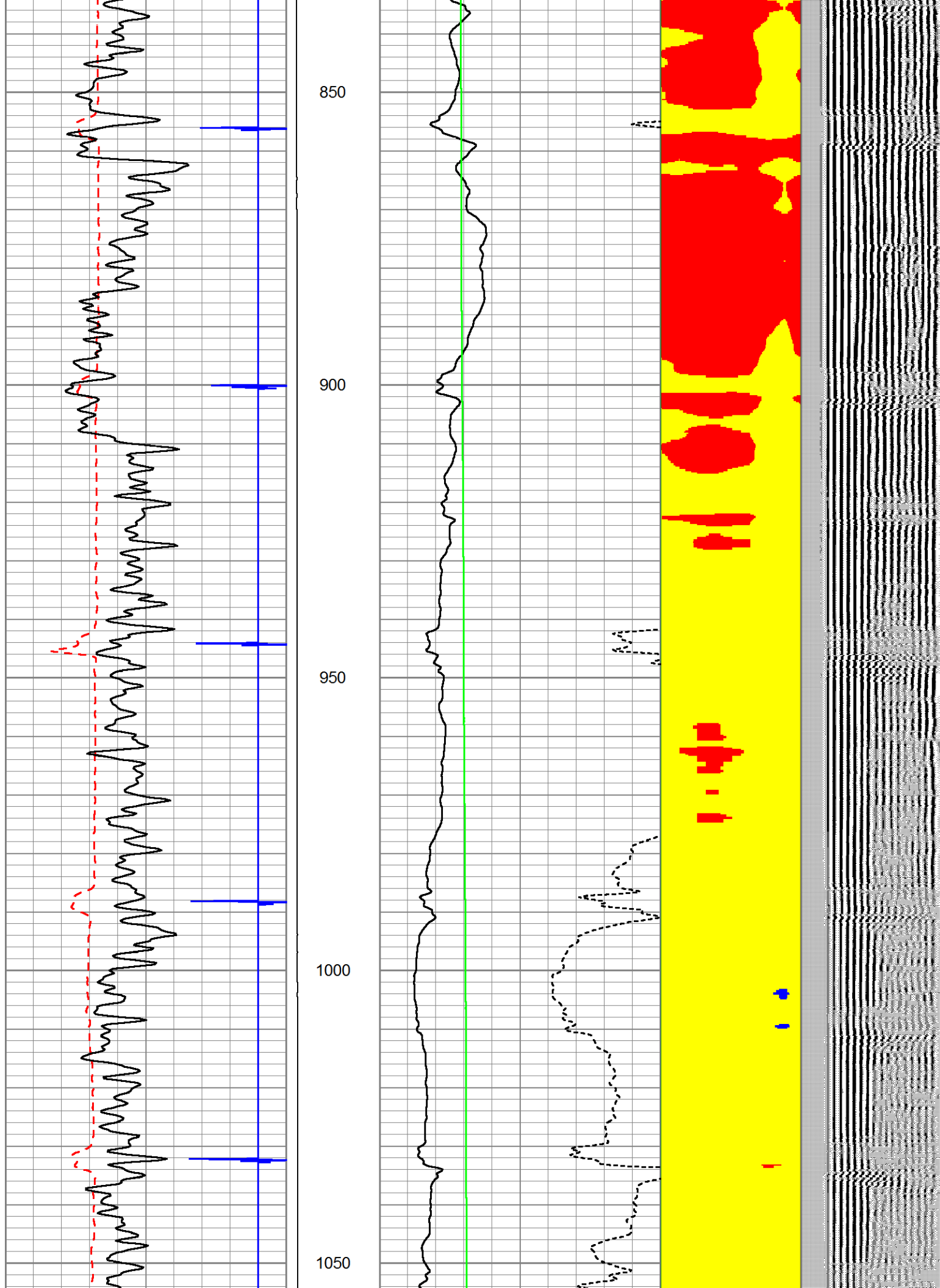
500

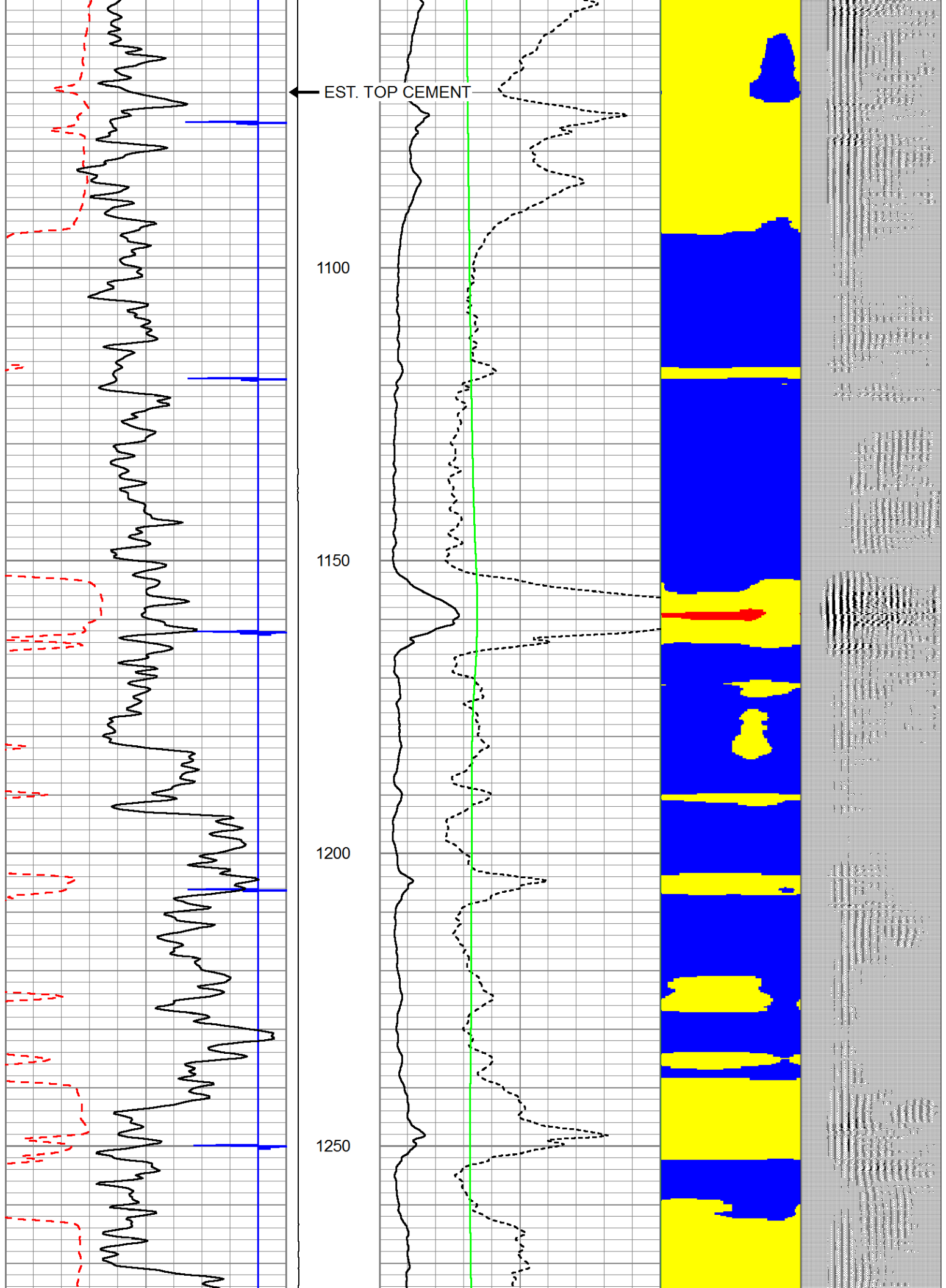
550

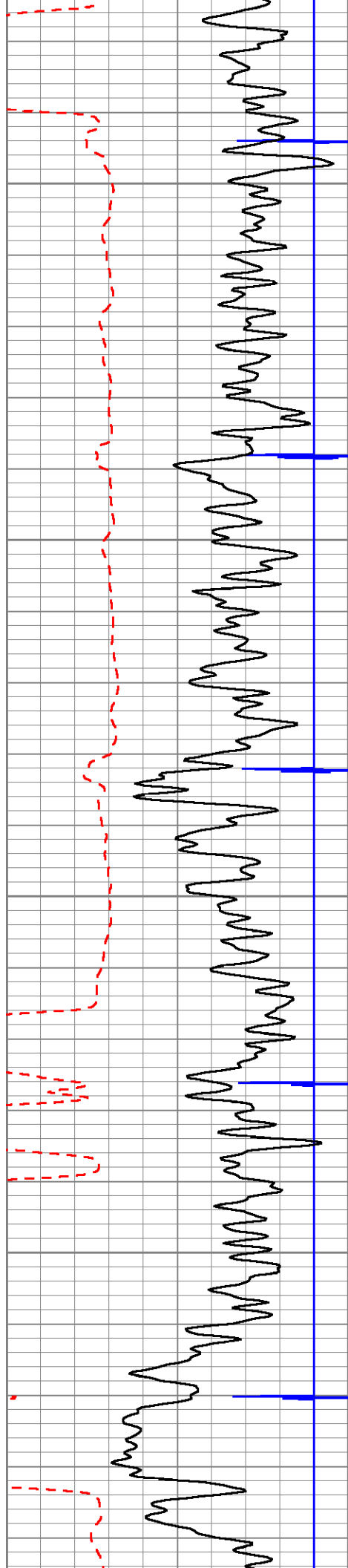
600









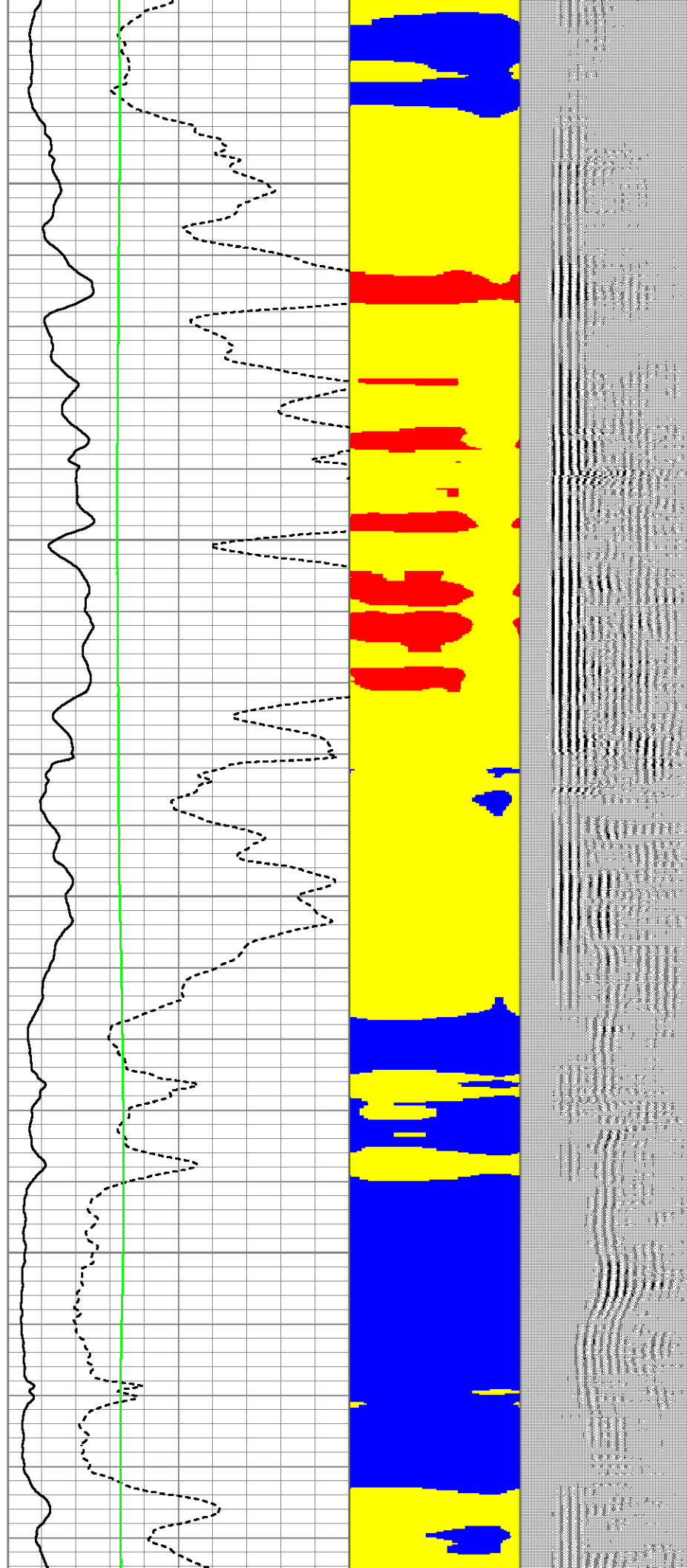


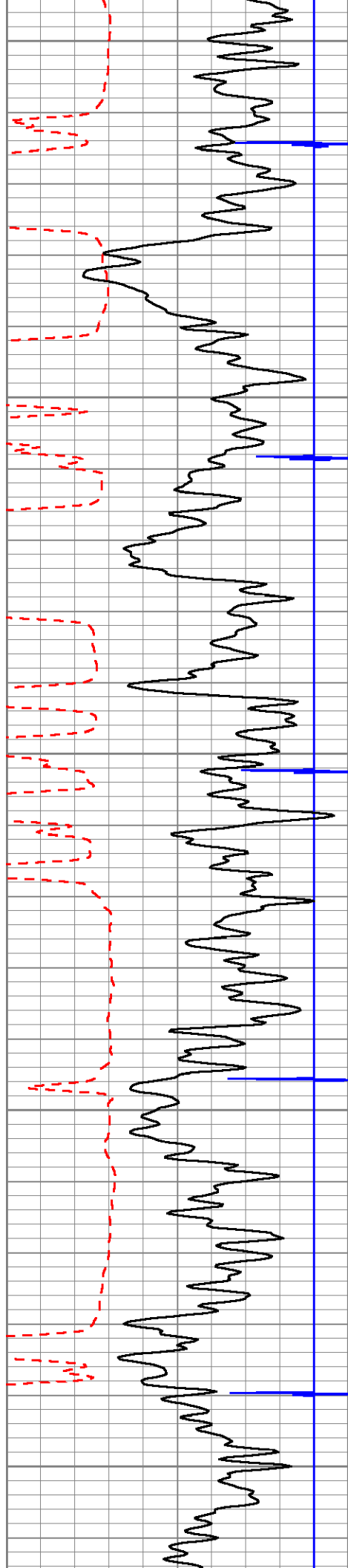
1300

1350

1400

1450





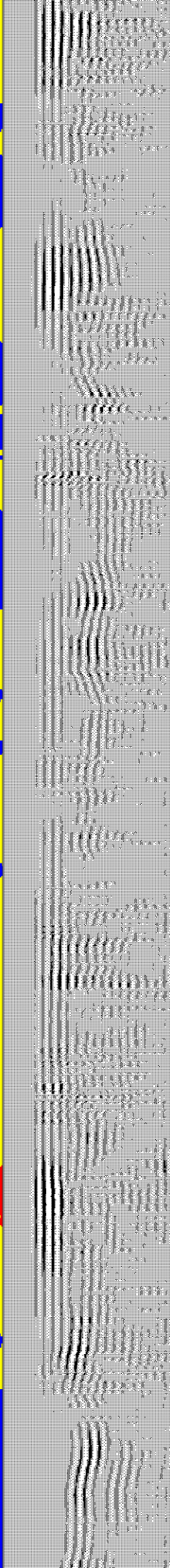
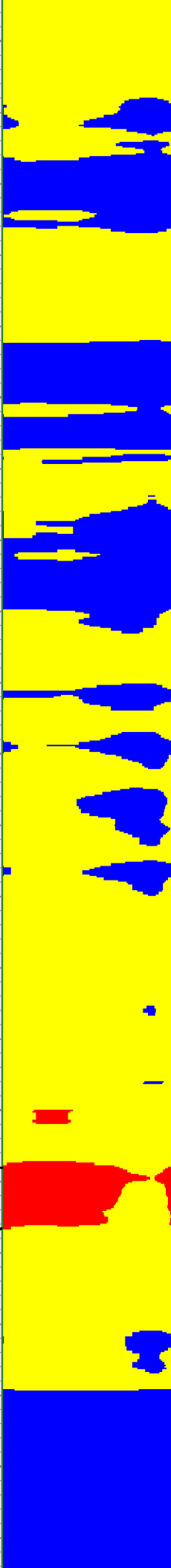
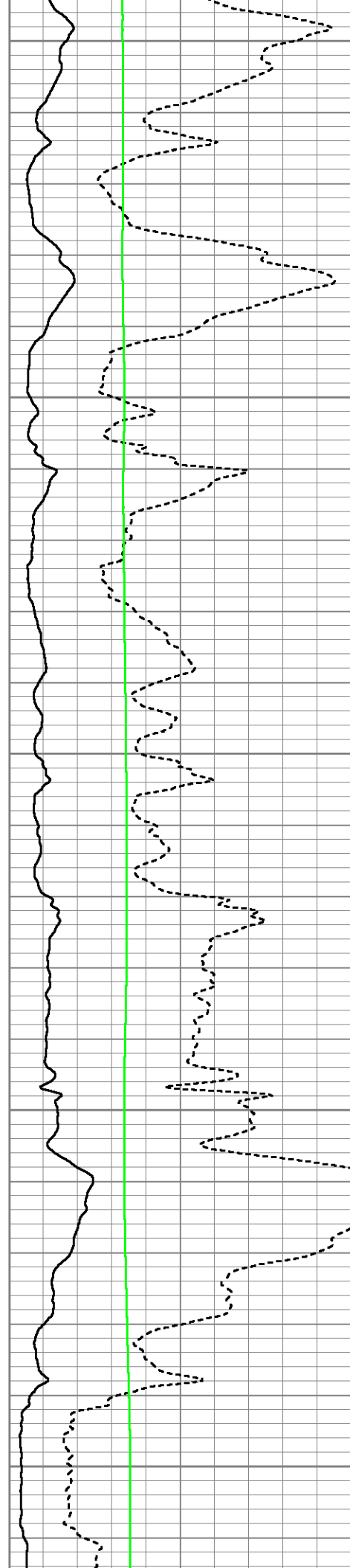
1500

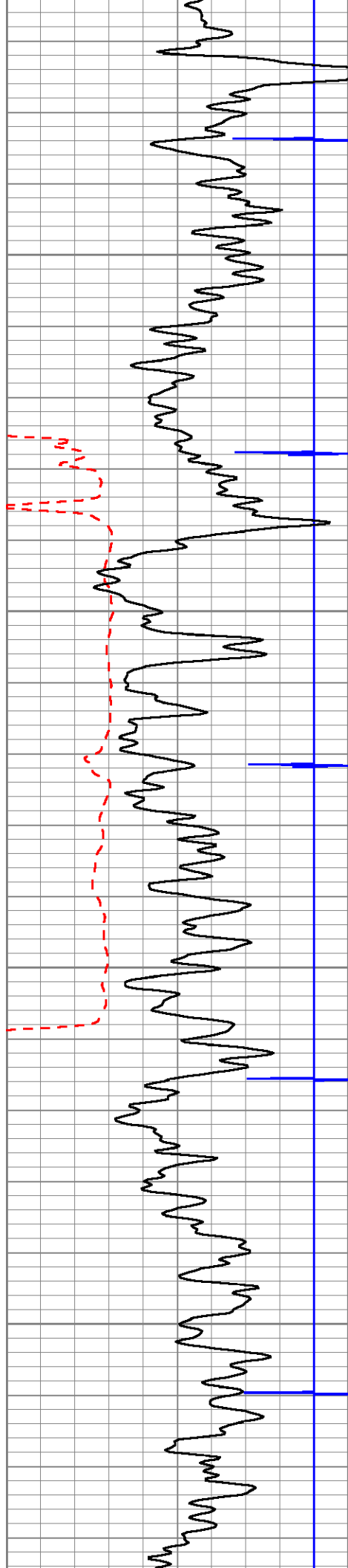
1550

1600

1650

1700



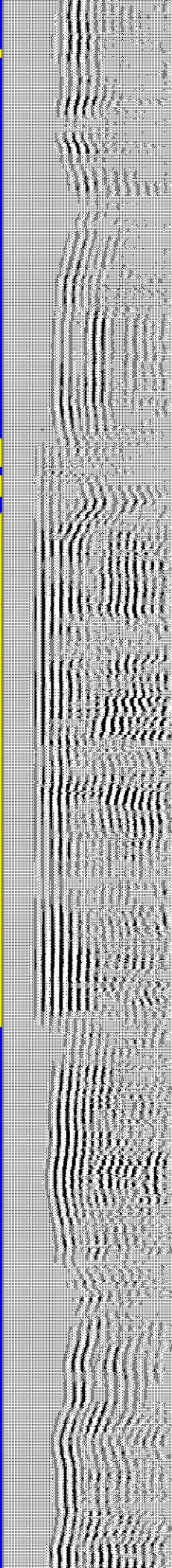
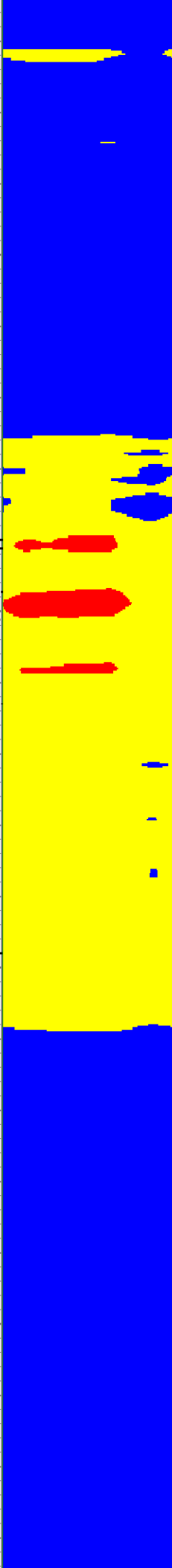
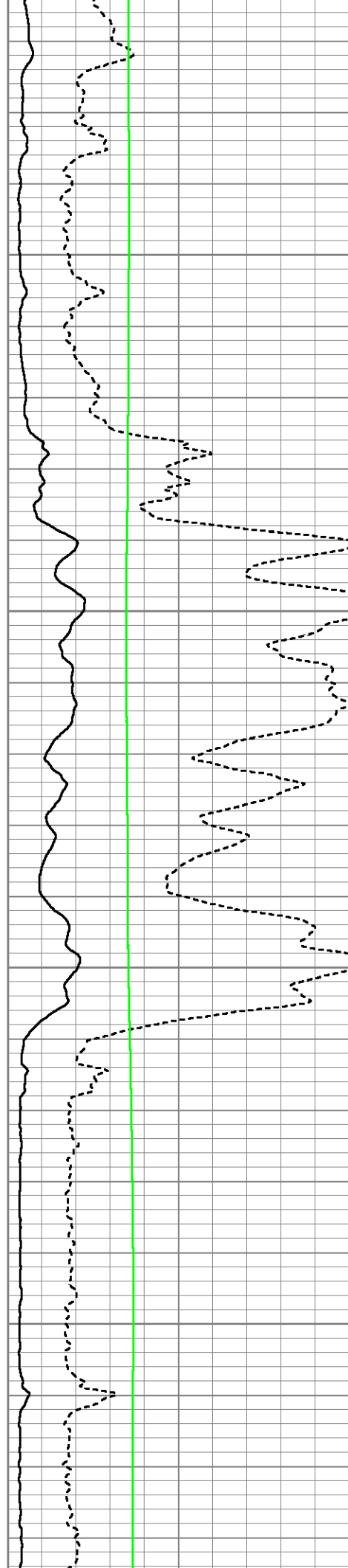


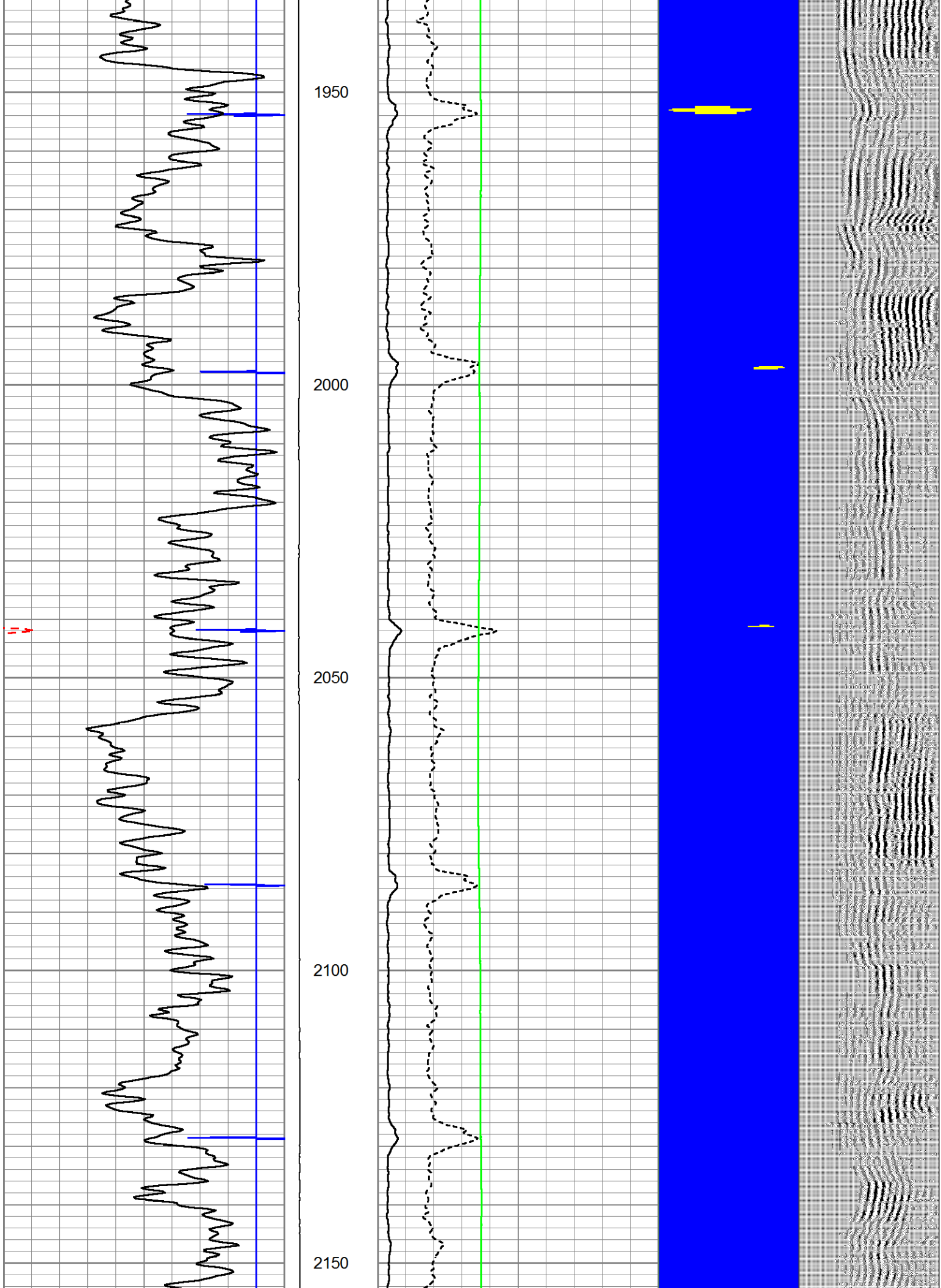
1750

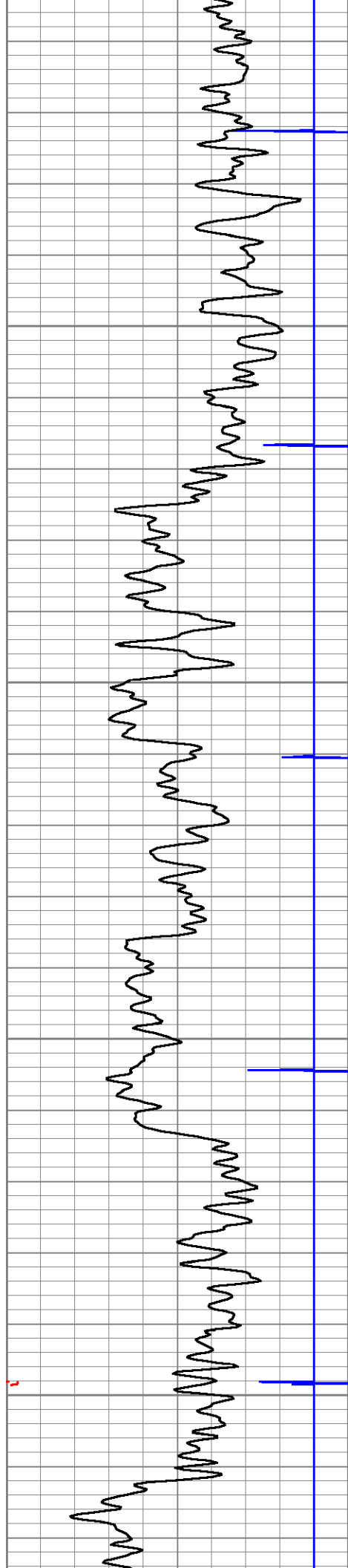
1800

1850

1900





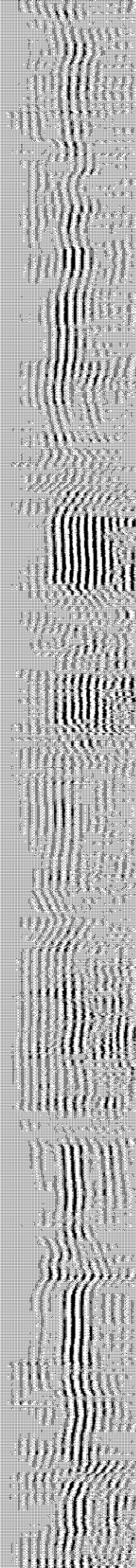
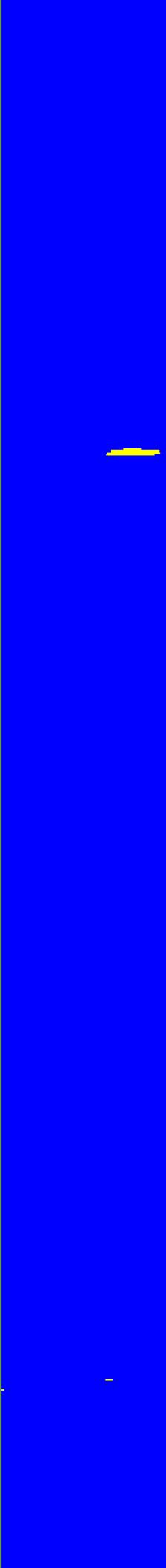
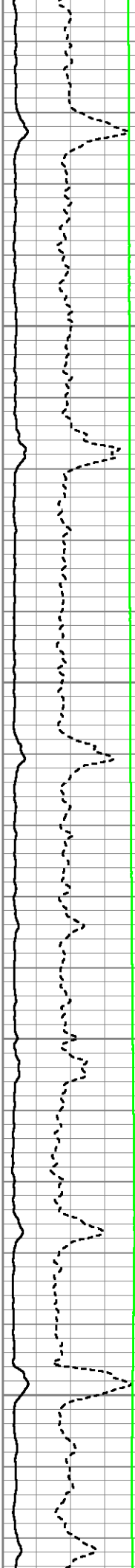


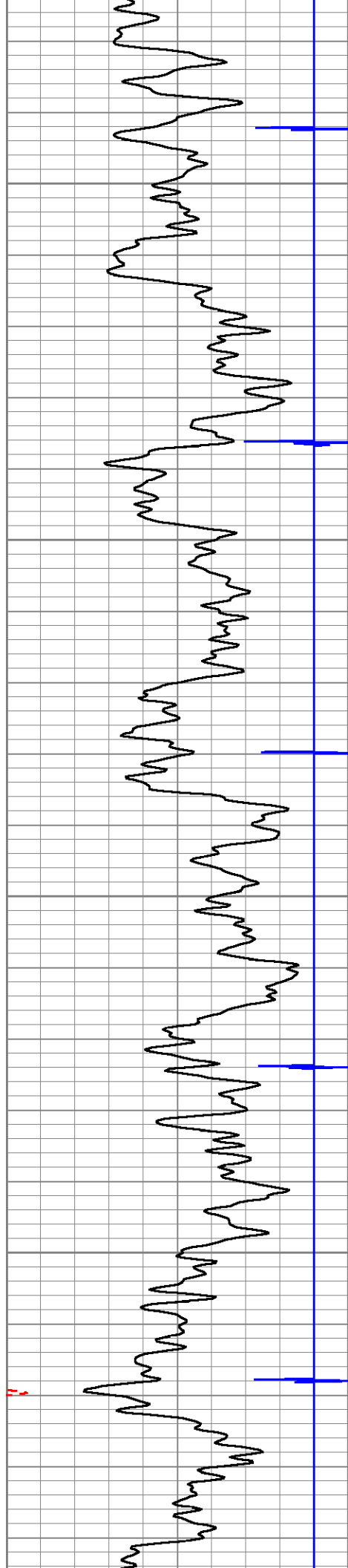
2200

2250

2300

2350



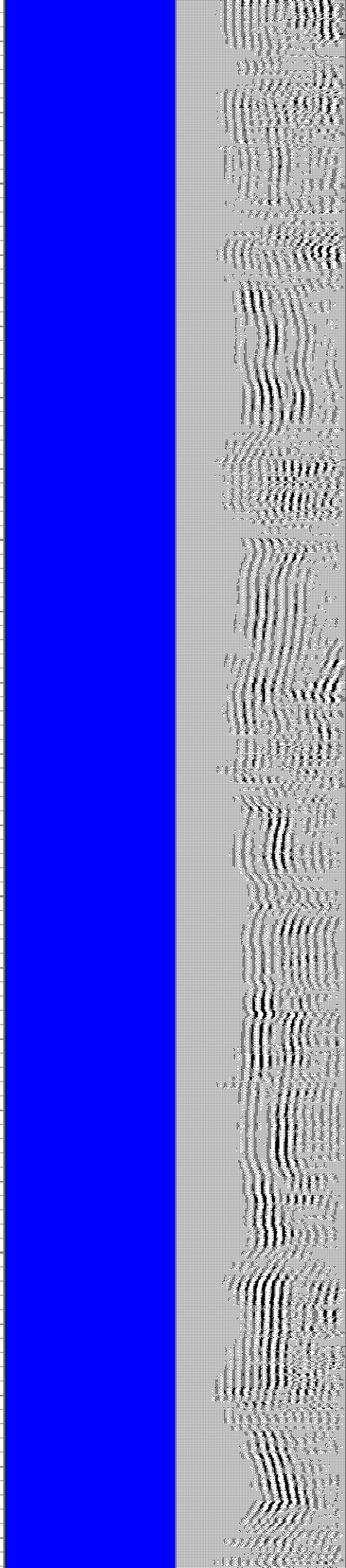
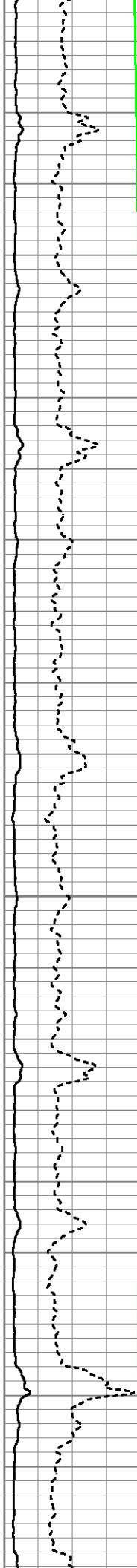


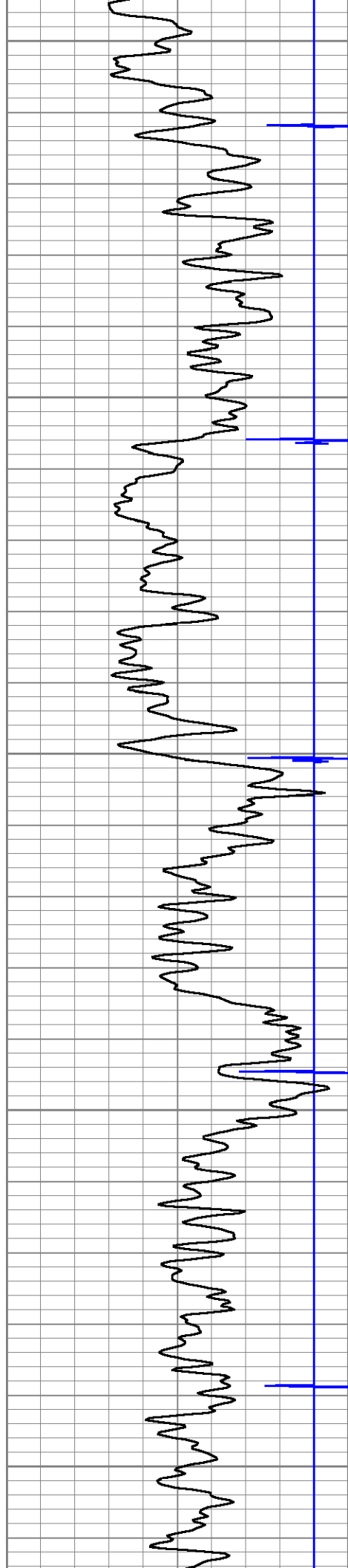
2400

2450

2500

2550





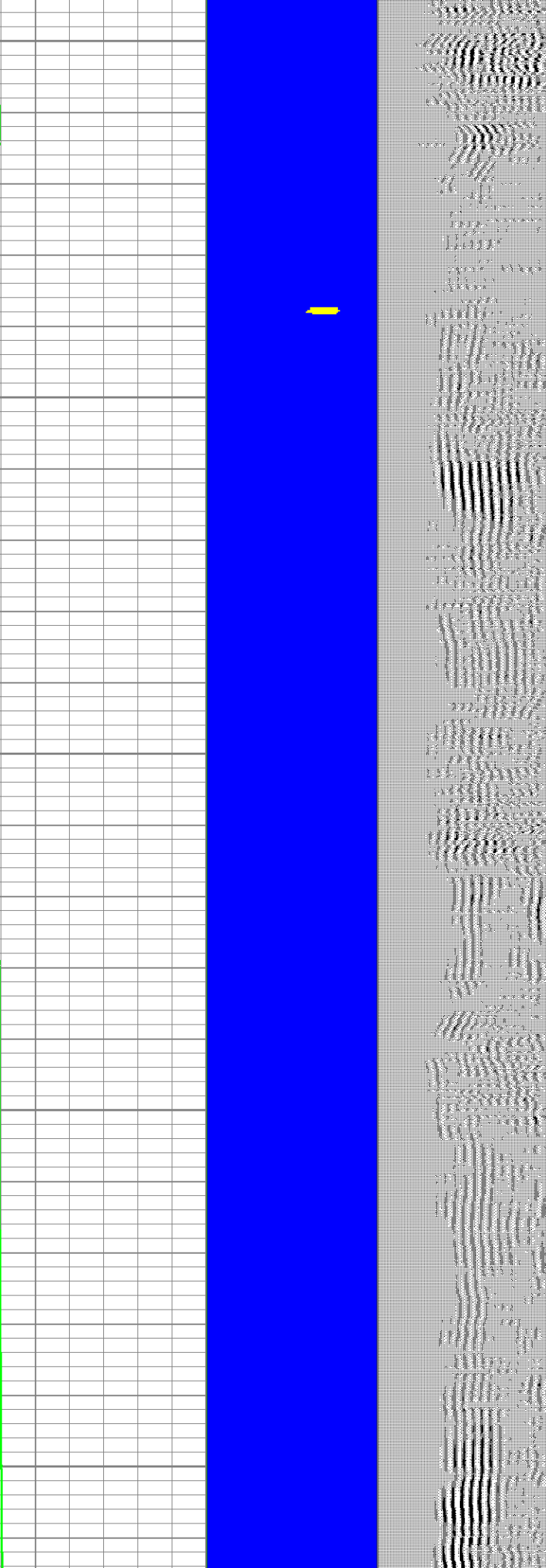
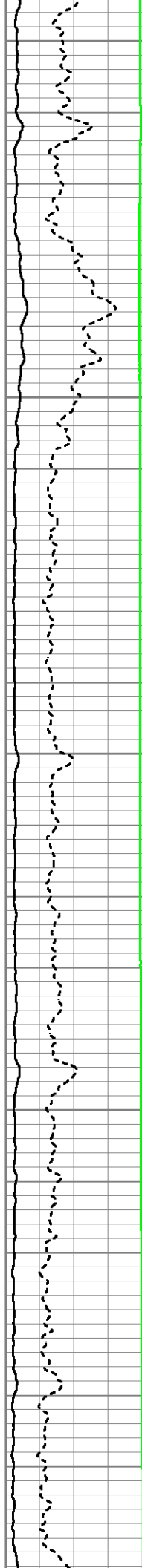
2600

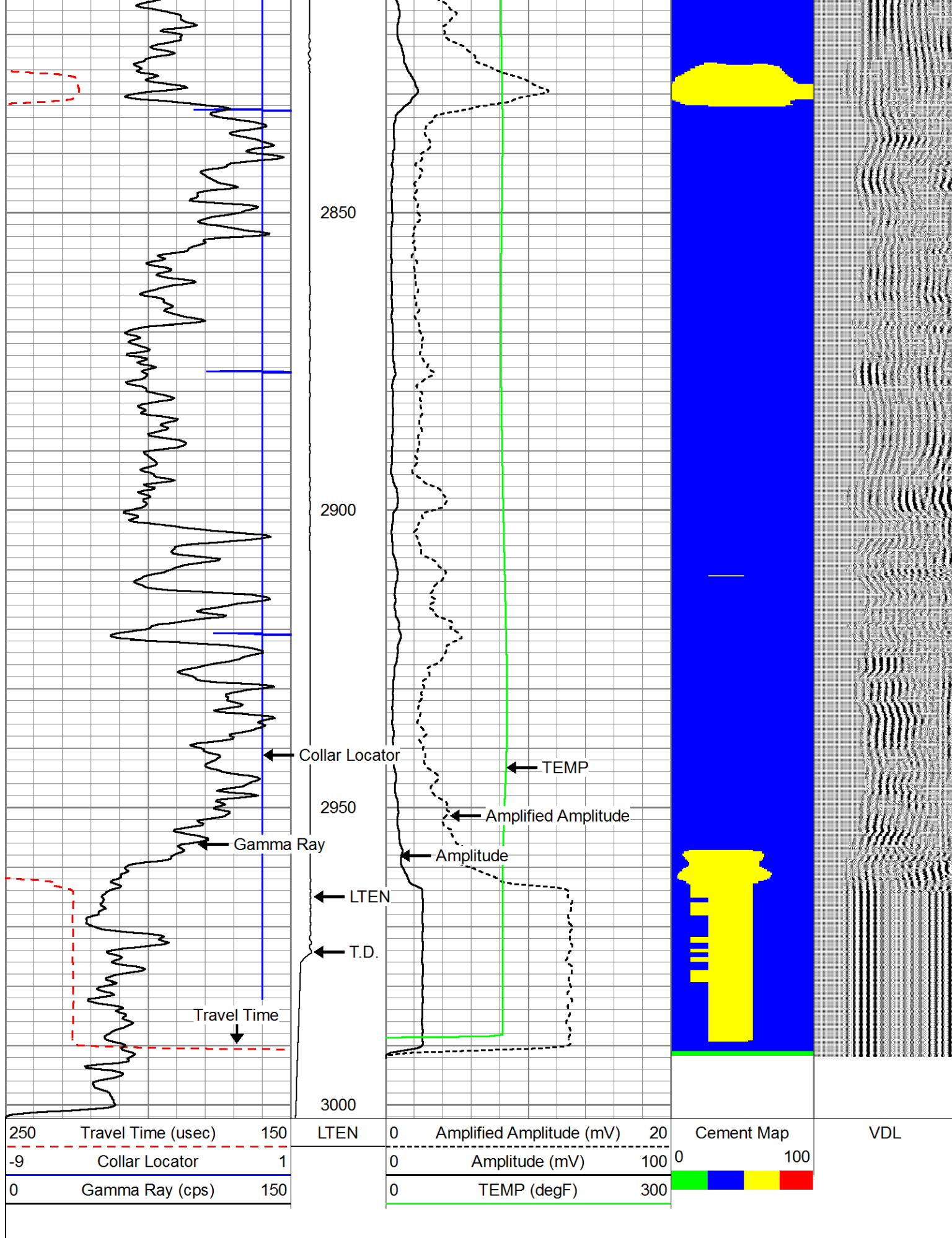
2650

2700

2750


2800

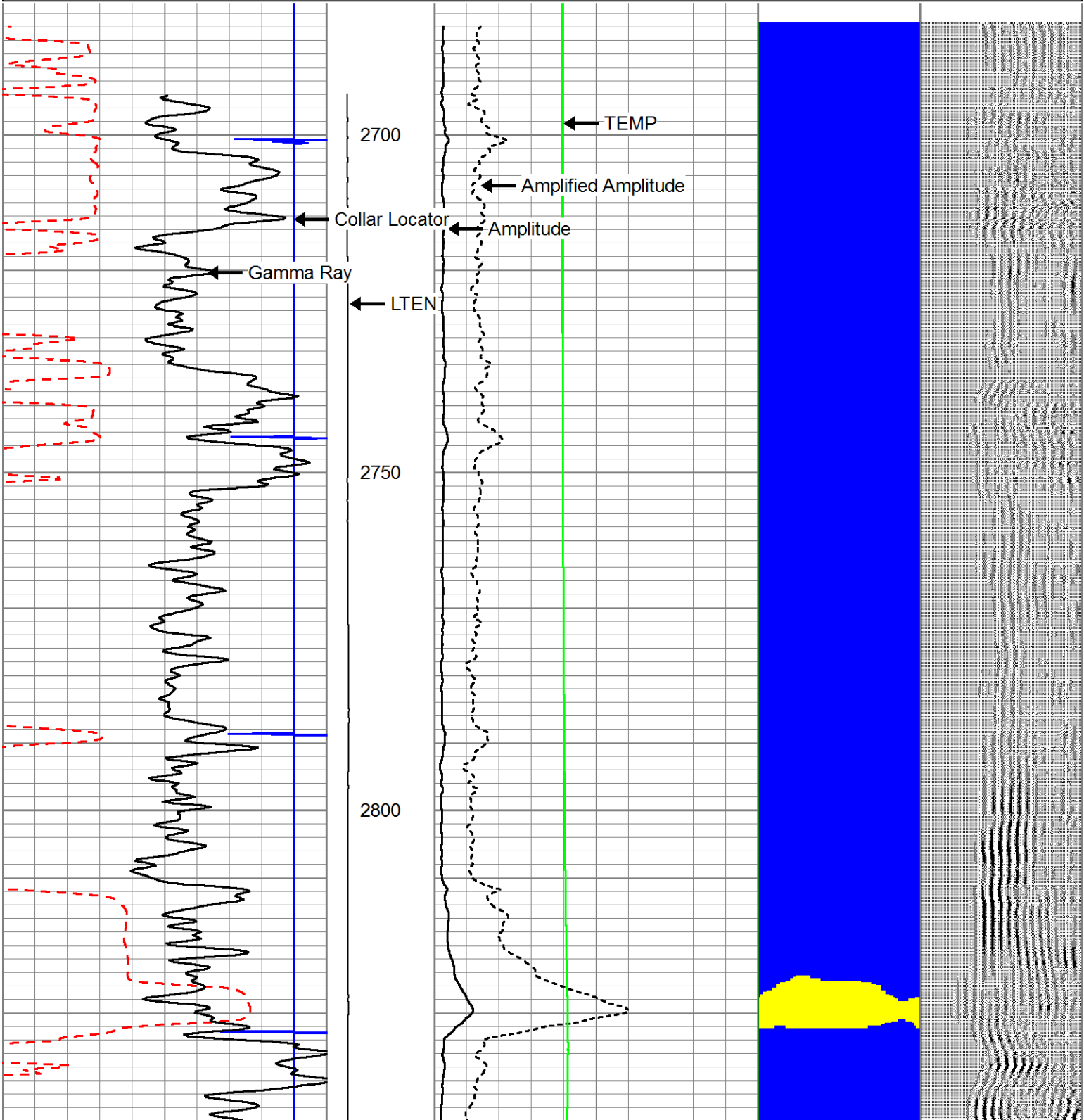


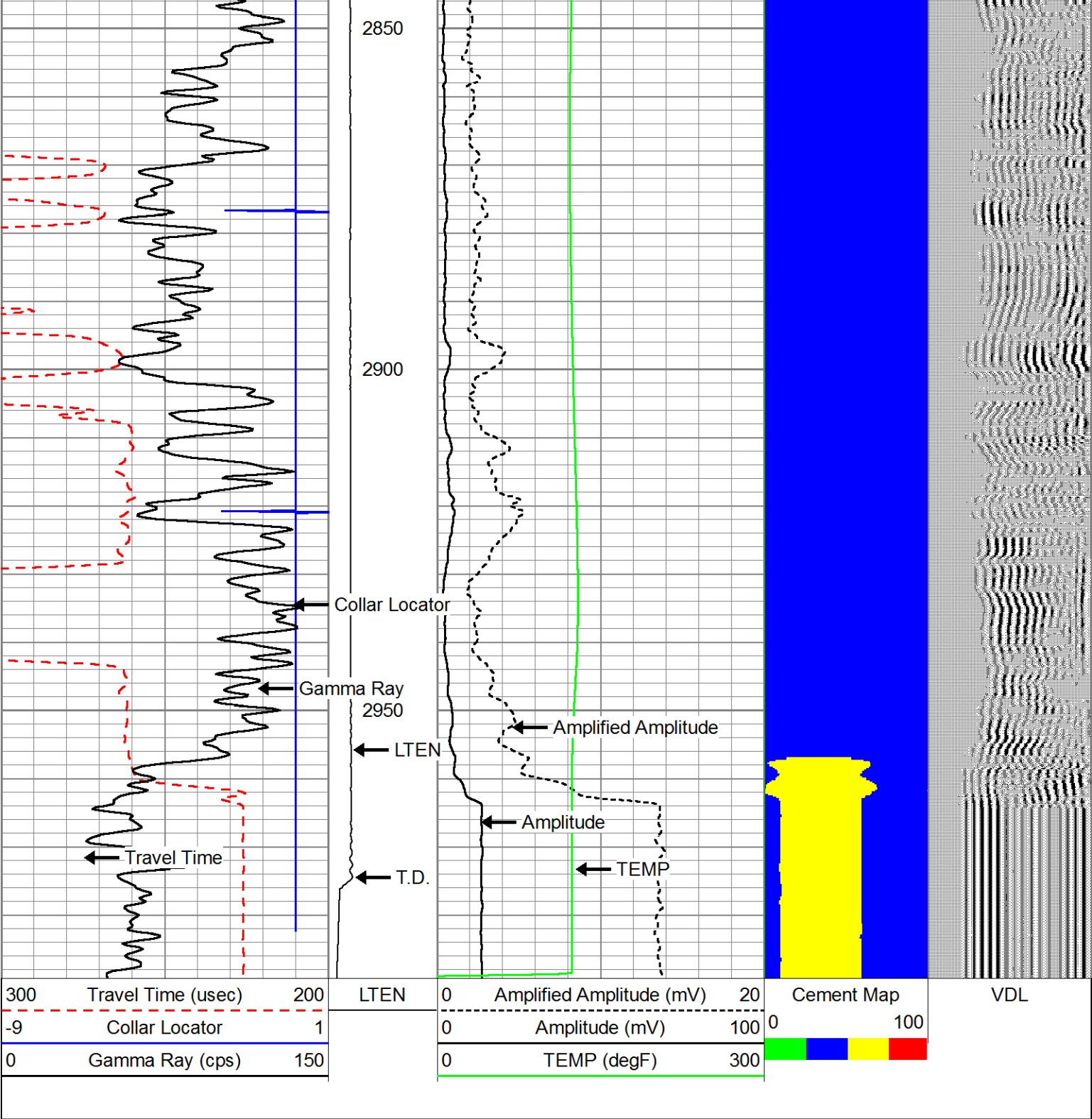


REPEAT PASS

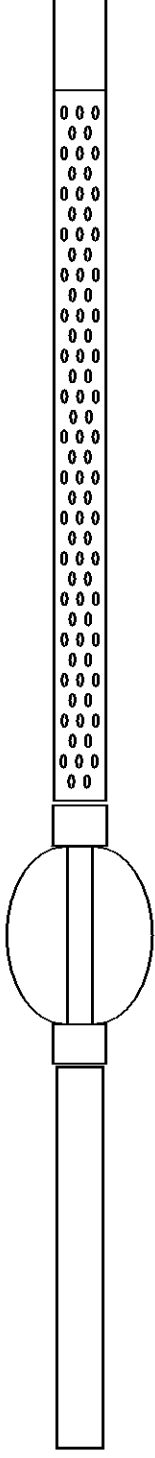
Database File: twincreek _12-3d1.db
 Dataset Pathname: pass7.1
 Presentation Format: sectorma
 Dataset Creation: Fri Apr 06 07:41:15 2012 by Calc SCH 110722
 Charted by: Depth in Feet scaled 1:240

300	Travel Time (usec)	200	LTEN	0	Amplified Amplitude (mV)	20	Cement Map	VDL
-9	Collar Locator	1		0	Amplitude (mV)	100	0 100	
0	Gamma Ray (cps)	150		0	TEMP (degF)	300		





Sensor	Offset (ft)	Schematic	Description	Len (ft)	OD (in)	Wt (lb)
CCL	19.94		CCL-MTEKCOHT (11) 2 3/4 TEKCO HI TEMP LOGGING CCL	1.83	2.75	15.00
			TITAN 2 3/4" TITAN BOW SPRING	2.92	2.75	15.00

TEMP	13.65		SCBL-TEKSECTEMP (SCBLTEMP) TEKCO 2 3/4" SECTOR/TEMP TOOL	9.04	2.75	90.00
WVFS1	12.23					
WVFS2	12.23					
WVFS3	12.23					
WVFS4	12.23					
WVFS5	12.23					
WVFS6	12.23					
WVFS7	12.23					
WVFS8	12.23					
WVF3FT	11.48					
WVF5FT	10.48					
WVFCAL	7.19					
WVFTEMP	7.19	TITAN 2 3/4" TITAN BOW SPRING	2.92	2.75	15.00	
		GR-MTEKCOHT (11) 2 3/4 TEKCO HI TEMP GAMMA RAY	4.27	2.75	40.00	
GR	1.08					
Dataset: twincreek _12-3d1.db: field/well/run1/pass12 Total Length: 20.98 ft Total Weight: 175.00 lb O.D. 2.75 in						



Company ENCANA OIL AND GAS USA INC
 Well TWIN CREEK 12-3D1 (F12E)
 Field MAMM CREEK
 County GARFIELD
 State COLORADO