



Mesa Wireline

CEMENT BOND LOG

Company	ENCANA OIL & GAS (USA) INC.	Company	ENCANA OIL & GAS (USA) INC.
Well	TWIN CREEK 12-3D1	Well	TWIN CREEK 12-3D1
Field	MAMM CREEK	Field	MAMM CREEK
County	GARFIELD	County	GARFIELD
State	COLORADO	State	COLORADO
Location:		API # : 05-045-20386-0000	Other Services
SEC: 12 TWP: 7S RGE: 92W		SHL: 2527 FNL & 1614' FWL	NONE
Permanent Datum	GROUND LEVEL	Elevation	6145'
Log Measured From	KELLY BUSHING = 24FT	K.B. 6169'	
Drilling Measured From	KELLY BUSHING	D.F. 6168'	
		G.L. 6145'	

Date	27 MAR 2012
Run Number	ONE
Depth Driller	1149'
Depth Logger	1026'
Bottom Logged Interval	1026'
Top Log Interval	SURFACE
Open Hole Size	12.25"
Type Fluid	WATER
Density / Viscosity	~8.34 LBS/GAL
Max. Recorded Temp.	60 DEG F
Estimated Cement Top	SEE LOG
Time Well Ready	N/A
Time Logger on Bottom	1830
Equipment Number	FL0601
Location	GRAND JUNCTION
Recorded By	M.BERNATCHEZ
Witnessed By	T. PHILLIPS
Borehole Record	
Run Number	Bit From To Size Weight From To
ONE	24" SURFACE 40'
TWO	12.25" 40' 1149'
Tubing Record	
Casing Record	Size Weight Top Bottom
Surface String	9.625" 36 SURFACE 1149'
Prot. String	
Production String	
Liner	

<<< Fold Here >>>

All interpretations are opinions based on inferences from electrical or other measurements and we cannot and do not guarantee the accuracy or correctness of any interpretation, and we shall not, except in the case of gross or willful negligence on our part, be liable or responsible for any loss, costs, damages, or expenses incurred or sustained by anyone resulting from any interpretation made by any of our officers, agents or employees. These interpretations are also subject to our general terms and conditions set out in our current Price Schedule.

Comments

NO LOG AVAILABLE FOR CORRELATION.

WE APPRECIATE YOUR BUSINESS, MESA WIRELINE LLC, GRAND JUNCTION CO. (970) 257-0458



MAIN LOG PASS

SCALE 5" = 100'

Mesa Wireline

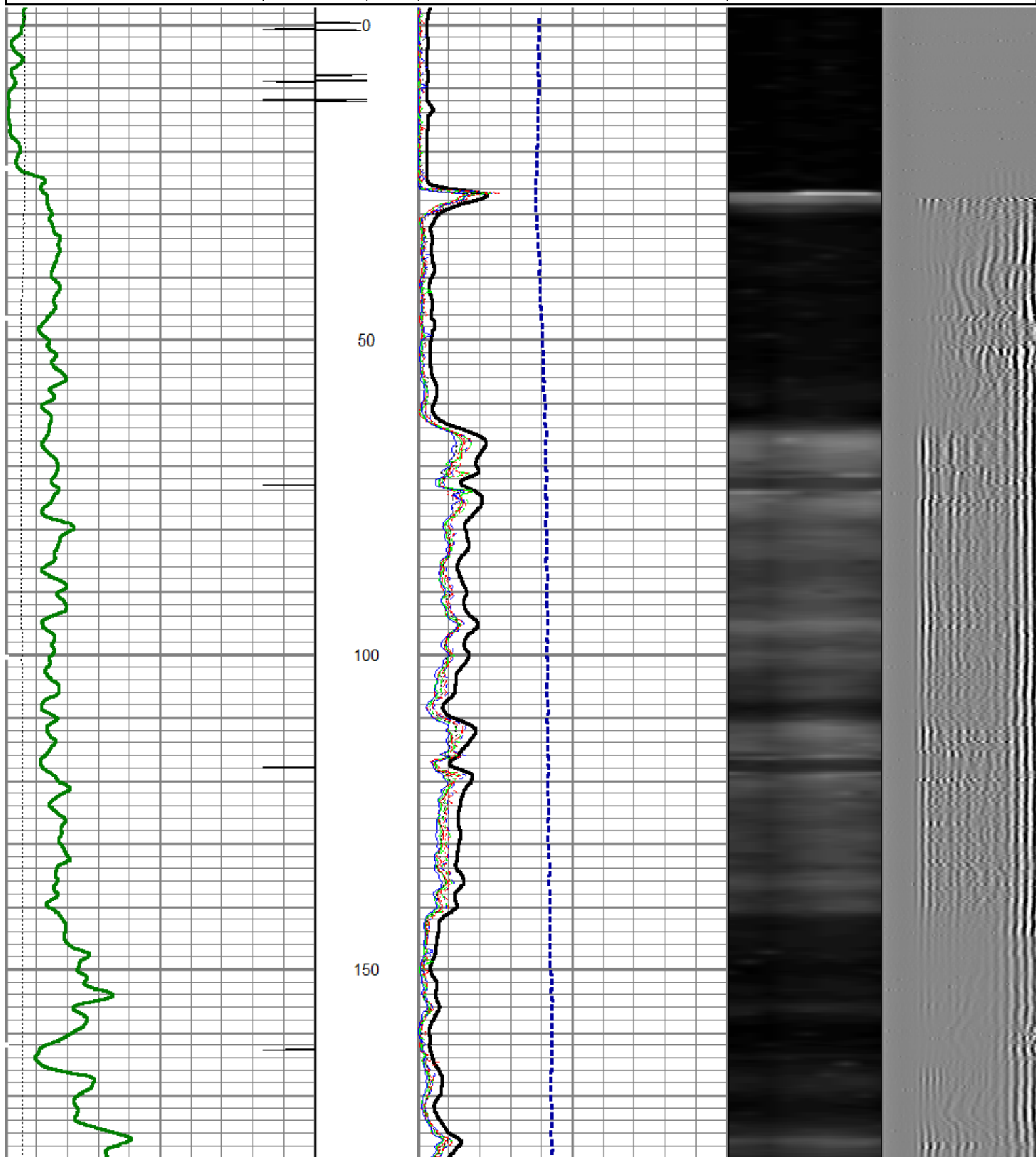
Database File: 12-3d1.db
Dataset Pathname: pass8.2
Presentation Format: rbt_fin
Dataset Creation: Tue Mar 27 18:54:38 2012 by Calc SCH 110930
Charted by: Depth in Feet scaled 1:240

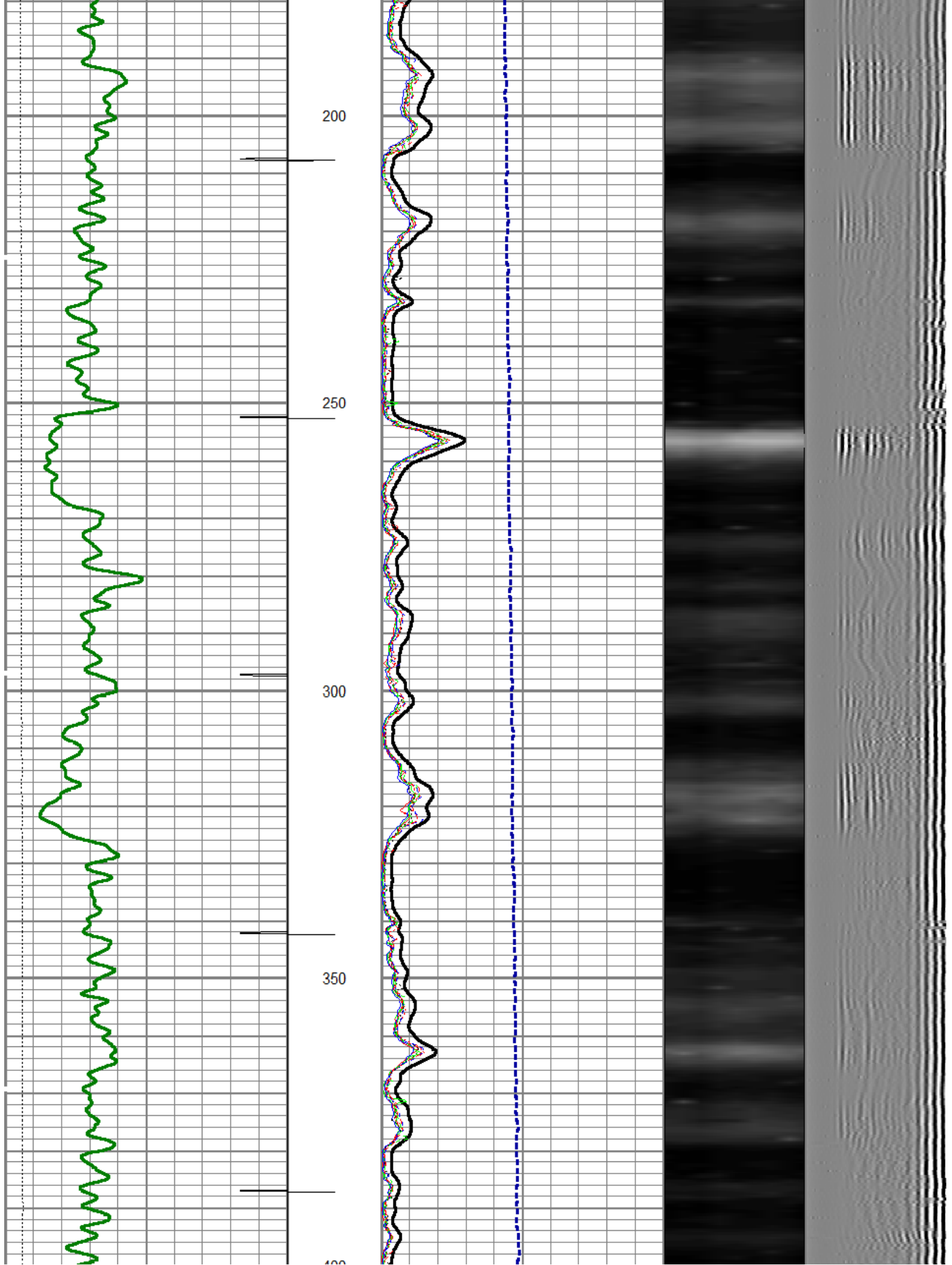
0 Gamma Ray (GAPI) 200
0 LTEN (lb) 4000

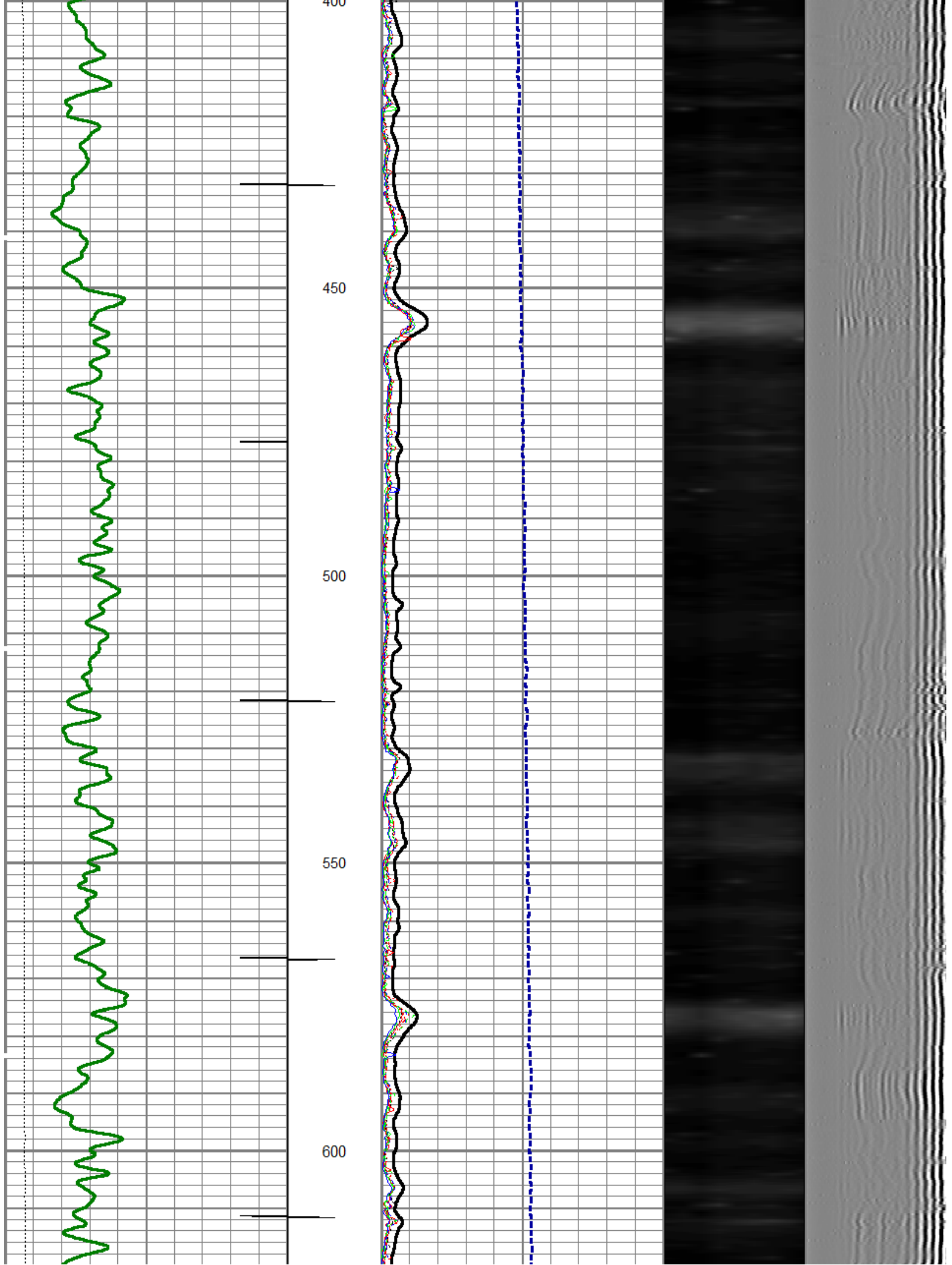
CCL

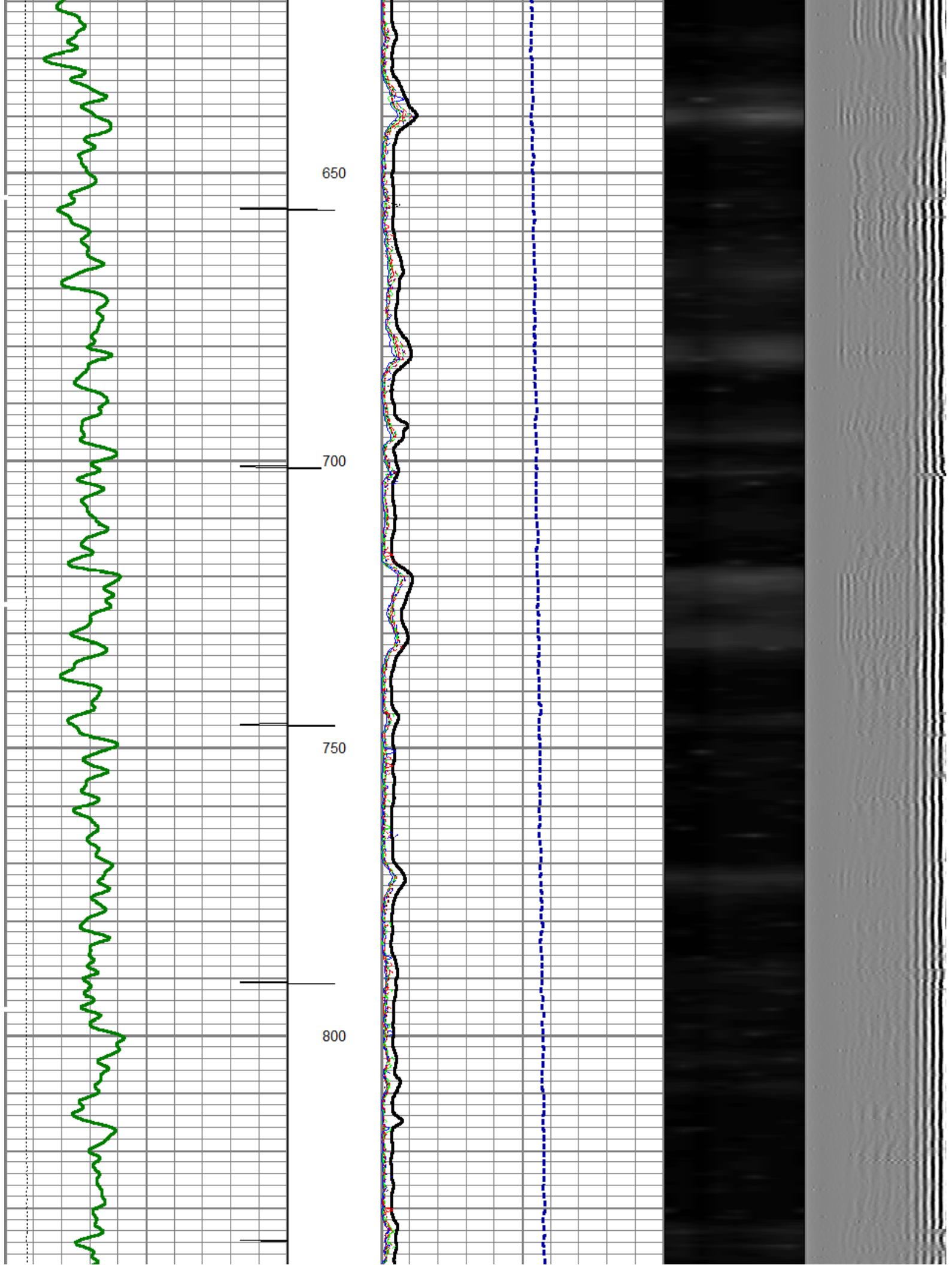
0 Amplitude (mV) 100
0 temp (degF) 100
0 TT3FT (usec) 208

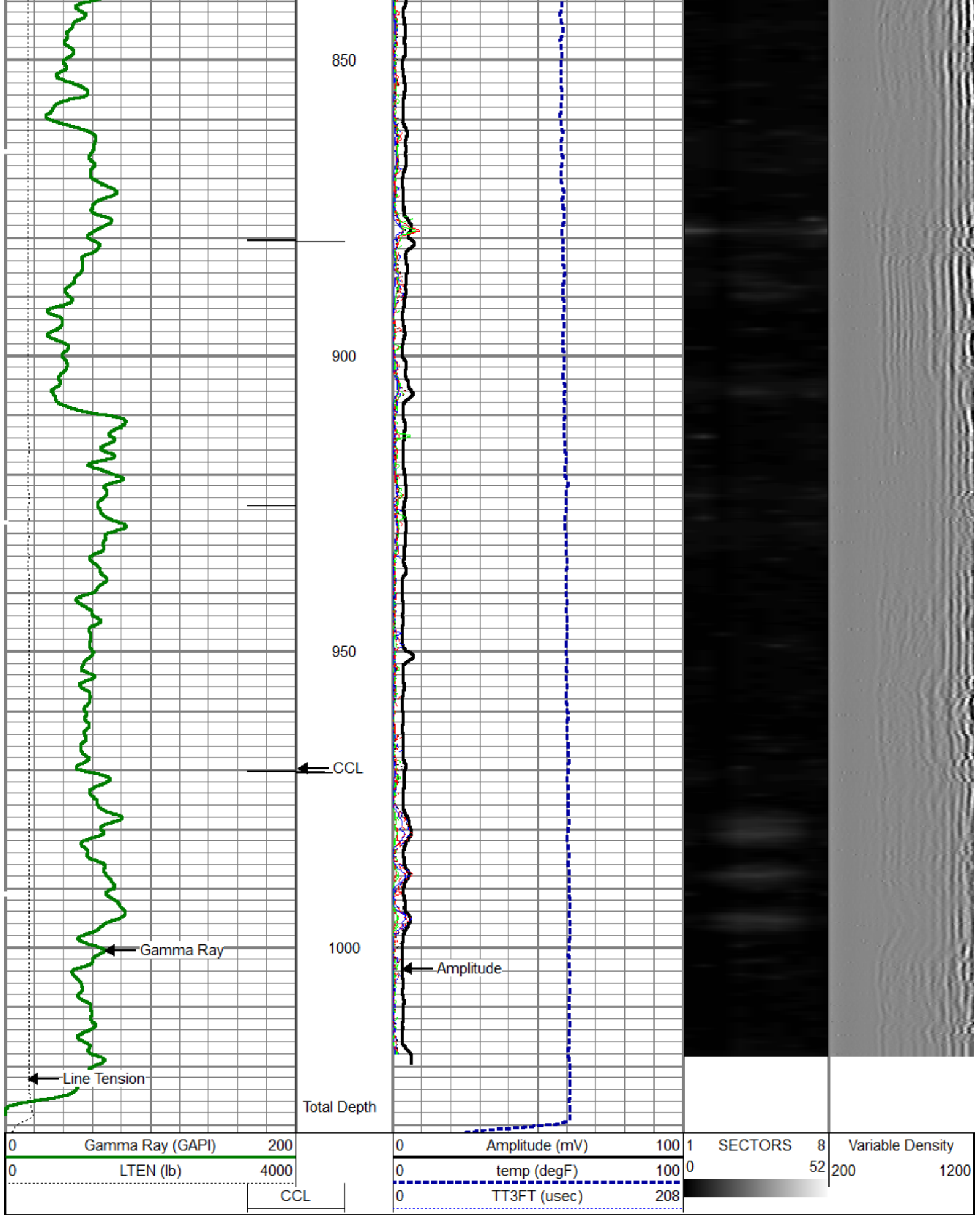
1 SECTORS 8
0 52 200 1200
Variable Density



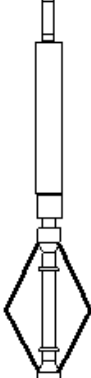








Sensor	Offset (ft)	Schematic	Description	Len (ft)	OD (in)	Wt (lb)

					1.00	1.69	2.00
CCL	21.68			SNDX_CCL-SNDX_3_13_CCL (000001) CSS Gamma Ray/CCL (CCL Section)	1.92	3.13	11.02
				SONDEX	2.71	2.75	32.00





Company	ENCANA OIL & GAS (USA) INC.
Well	TWIN CREEK 12-3D1
Field	MAMM CREEK
County	GARFIELD
State	COLORADO