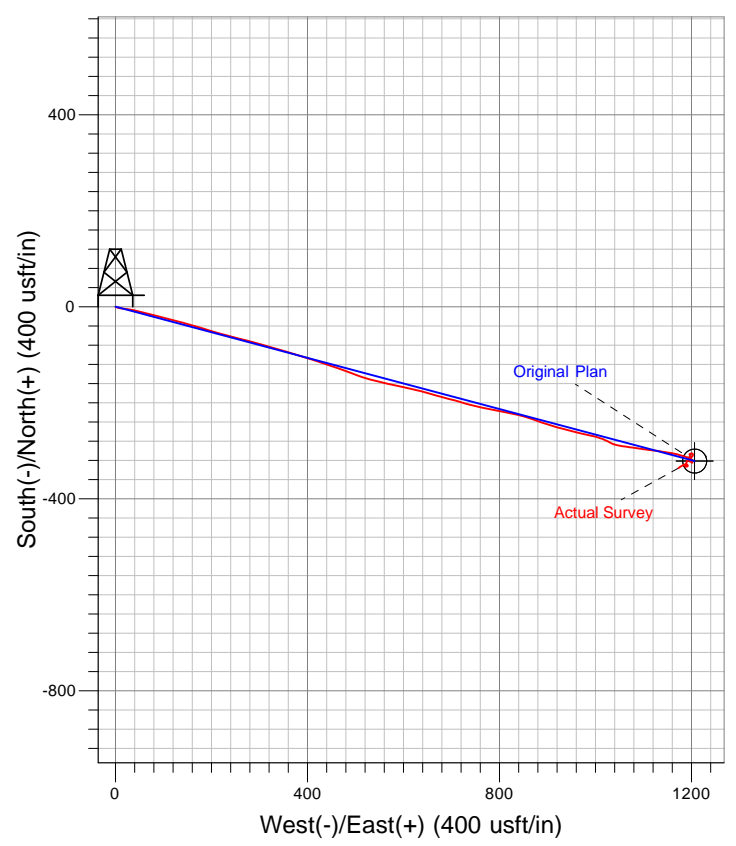
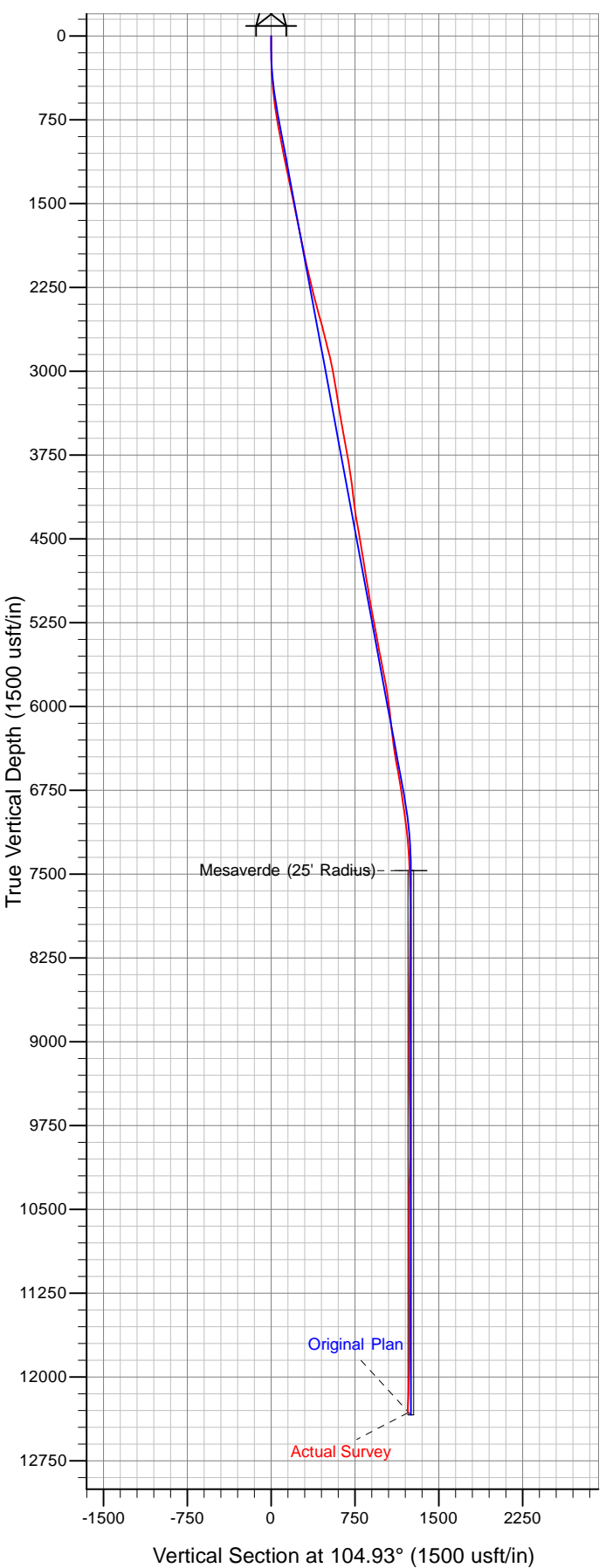




Well Name: Federal RGU 33-35-198
 Surface Location: RGU 23-35-198 Pad
 North American Datum 1983 , US State Plane 1983 Colorado Central Zone
 Ground Elevation: 6778.0

| +N/-S | +E/-W | Northing | Easting | Latitude | Longitude | Slot |
|-------|-------|------------|------------|-----------------|-------------------|------|
| 0.0 | 0.0 | 1772352.70 | 2197208.30 | 39° 55' 9.122 N | 108° 21' 44.783 W | A11 |

KELLY BUSHING @ 6799.0usft (Cyclone 29 (21' RKB) jib)



Azimuths to True North
 Magnetic North: 10.57°

Magnetic Field
 Strength: 52420.7snT
 Dip Angle: 66.02°
 Date: 7/1/2011
 Model: IGRF2010