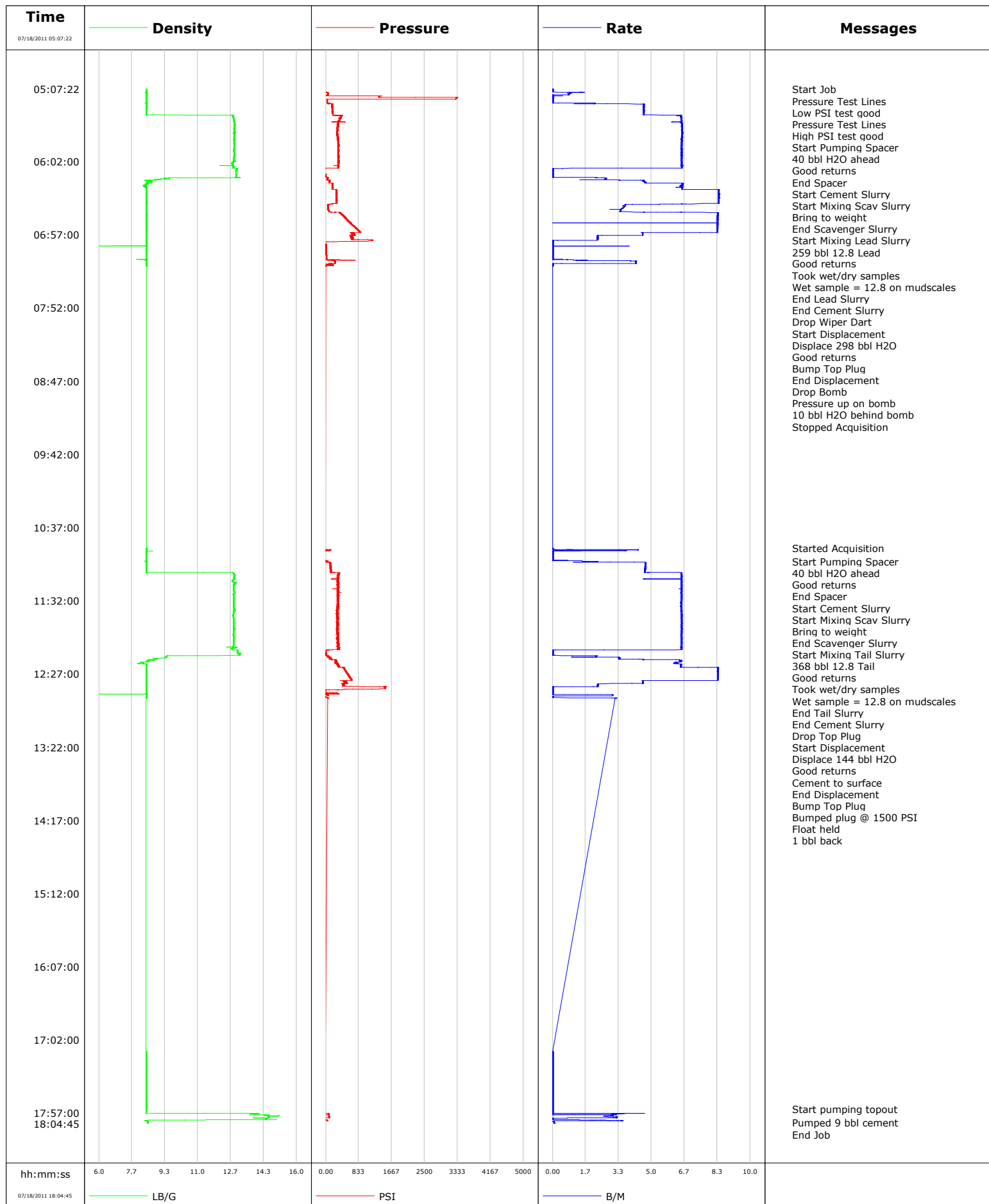


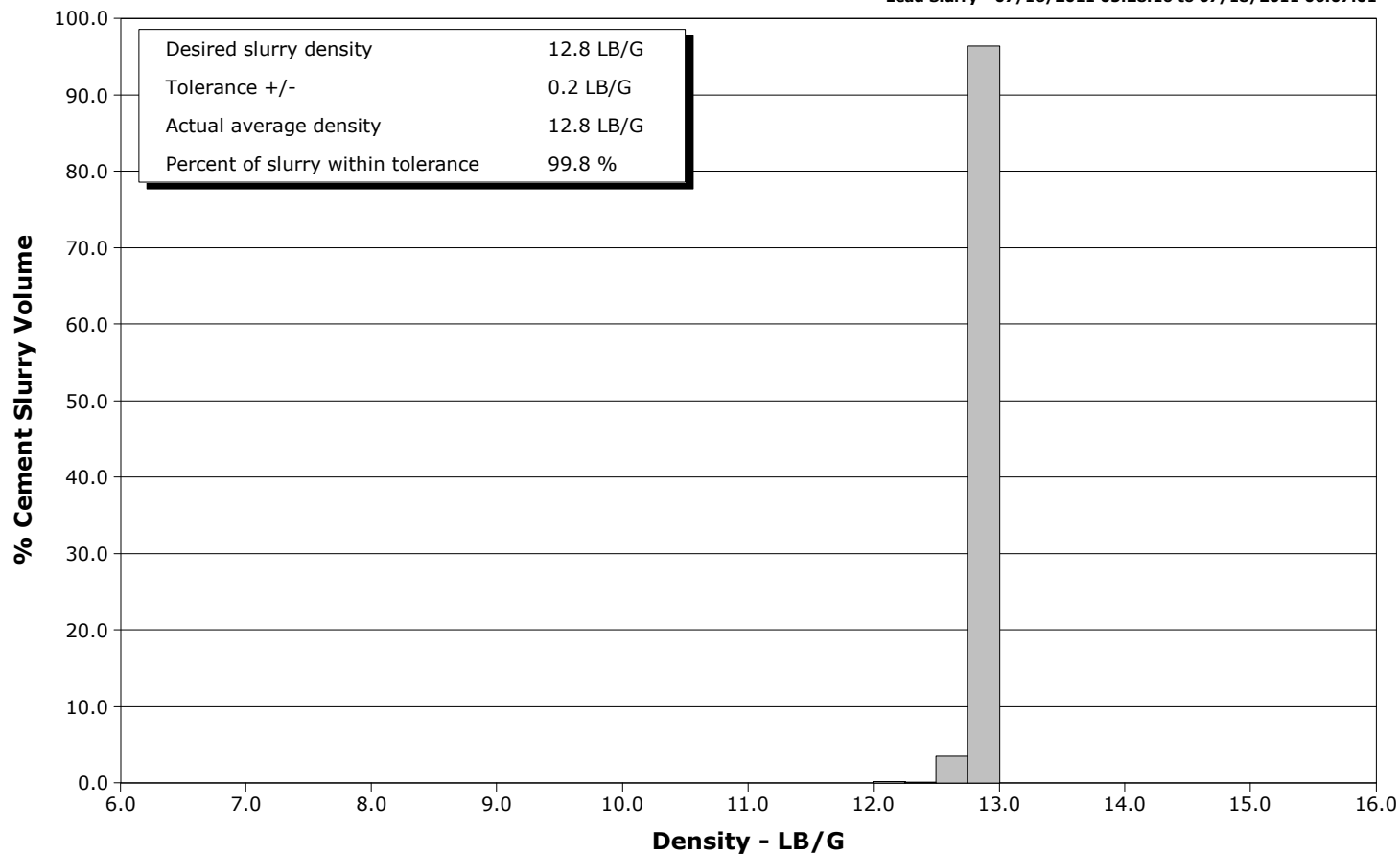
Well	RGU-33-35-198	Client	Williams
Field	Ryan Gulch	SIR No.	BP3Z-00174
Engineer	Matt Fair	Job Type	2 stage surface
Country	United States	Job Date	07-18-2011



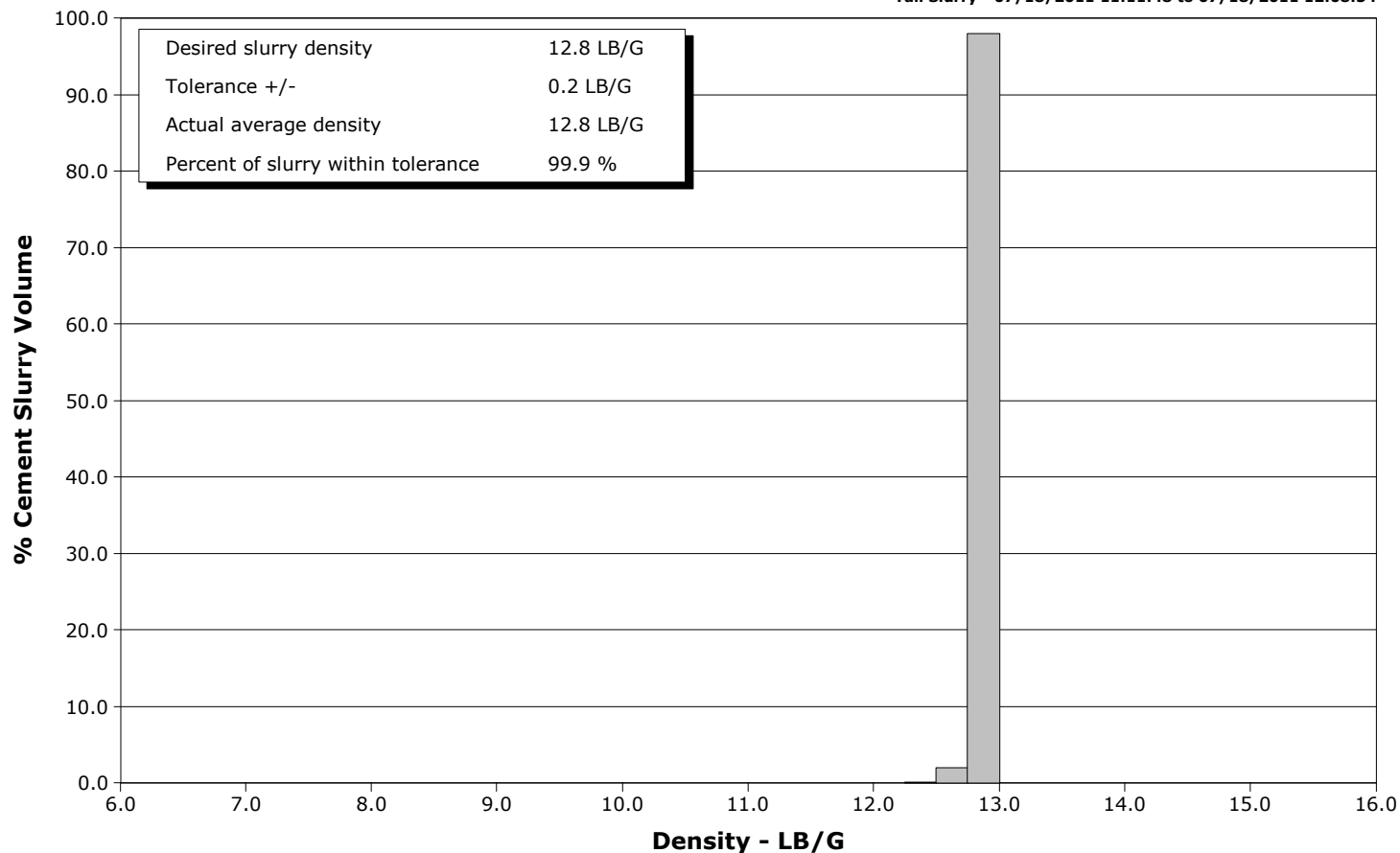
Well RGU-33-35-198
Field Ryan Gulch
Engineer Matt Fair
Country United States

Client Williams
SIR No. BP3Z-00174
Job Type 2 stage surface
Job Date 07-18-2011

Lead Slurry - 07/18/2011 05:28:16 to 07/18/2011 06:07:01



Tail Slurry - 07/18/2011 11:11:48 to 07/18/2011 12:08:54



				Customer Williams				Job Number BP3Z-00174			
Well RGU-33-35-198			Location (legal)			Schlumberger Location			Job Start Jul/18/2011		
Field Ryan Gulch		Formation Name/Type Shale		Deviation deg		Bit Size 13.5 in		Well MD 3894.0 ft		Well TVD 3894.0 ft	
County Rio Blanco		State/Province Colorado		BHP psi		BHST 121 degF		BHCT 89 degF		Pore Press. Gradient lb/gal	
Well Master 0631296284		API/UWI									
Rig Name Cyclone 29		Drilled For Gas		Service Via Land		Casing/Liner					
						Depth, ft		Size, in		Weight, lb/ft	
Offshore Zone		Well Class New		Well Type Development		80.0		18.0		94.0	
						3894.0		9.6		36.0	
Drilling Fluid Type Bentonite		Max. Density lb/gal		Plastic Viscosity cP		Tubing/Drill Pipe					
						T/D		Depth, ft		Size, in	
Service Line Cementing		Job Type 2 stage surface									
Max. Allowed Tub. Press 2030 psi		Max. Allowed Ann. Press 3520 psi		WH Connection 9 5/8		Perforations/Open Hole					
						Top, ft		Bottom, ft		shot/ft	
										No. of Shots	
										Total Interval ft	
										Diameter in	
						Treat Down Casing		Displacement 298.0 bbl		Packer Type	
										Packer Depth ft	
						Tubing Vol. bbl		Casing Vol. 301.0 bbl		Annular Vol. 177.0 bbl	
										Openhole Vol. 507.0 bbl	
Casing/Tubing Secured <input checked="" type="checkbox"/>		1 Hole Vol. Circulated prior to Cement <input checked="" type="checkbox"/>		Casing Tools				Squeeze Job			
Lift Pressure 1927 psi				Shoe Type Float				Squeeze Type			
Pipe Rotated <input type="checkbox"/>		Pipe Reciprocated <input type="checkbox"/>		Shoe Depth 3894.0 ft				Tool Type			
No. Centralizers 10		Top Plugs 1		Bottom Plugs 0		Stage Tool Type DV				Tool Depth ft	
Cement Head Type Single				Stage Tool Depth 1860.0 ft				Tail Pipe Size in			
Job Scheduled For Jul/18/2011 02:00		Arrived on Location Jul/18/2011 02:00		Leave Location Jul/18/2011 13:00		Collar Type Float				Tail Pipe Depth ft	
						Collar Depth 3855.0 ft				Sqz. Total Vol. bbl	
Date	Time 24-hr clock	CPF1_DENSITY LB/G	CPF1_PRESS PSI	CPF1_TTL_RATE B/M	Message						
07/18/2011	05:07:22	8.41	-6	0.0	Started Acquisition						
07/18/2011	05:07:29	8.41	-6	0.0	Start Job						
07/18/2011	05:09:02	8.41	-9	0.0							
07/18/2011	05:10:42	8.41	52	0.9							
07/18/2011	05:12:10	8.40	29	0.0	Pressure Test Lines						
07/18/2011	05:12:11	8.40	29	0.0	Low PSI test good						
07/18/2011	05:12:22	8.40	29	0.0							
07/18/2011	05:14:02	8.40	3310	0.0							
07/18/2011	05:14:15	8.40	3302	0.0	Pressure Test Lines						
07/18/2011	05:14:16	8.40	3301	0.0	High PSI test good						
07/18/2011	05:15:42	8.40	31	0.0							
07/18/2011	05:17:22	8.40	29	0.0							
07/18/2011	05:18:05	8.38	109	1.5	Start Pumping Spacer						
07/18/2011	05:18:07	8.35	93	1.8	40 bbl H2O ahead						
07/18/2011	05:19:02	8.41	162	4.6							
07/18/2011	05:19:30	8.41	166	4.6	Good returns						
07/18/2011	05:20:42	8.40	162	4.6							
07/18/2011	05:22:22	8.40	162	4.6							
07/18/2011	05:24:02	8.40	170	4.6							
07/18/2011	05:25:42	8.40	171	4.6							
07/18/2011	05:26:54	8.40	183	4.6	End Spacer						

Well			Field	Job Start	Customer	Job Number
RGU-33-35-198			Ryan Gulch	Jul/18/2011	Williams	BP3Z-00174
Date	Time 24-hr clock	CPF1_DENSITY LB/G	CPF1_PRESS PSI	CPF1_TTL_RATE B/M	Message	
07/18/2011	05:26:57	8.40	177	4.6	Start Mixing Scav Slurry	
07/18/2011	05:27:11	12.77	378	6.5	Bring to weight	
07/18/2011	05:27:22	12.77	410	6.5		
07/18/2011	05:28:14	12.77	381	6.5	End Scavenger Slurry	
07/18/2011	05:28:16	12.77	389	6.5	Start Mixing Lead Slurry	
07/18/2011	05:28:19	12.77	389	6.5	259 bbl 12.8 Lead	
07/18/2011	05:29:02	12.80	374	6.5		
07/18/2011	05:29:06	12.80	351	6.5	Took wet/dry samples	
07/18/2011	05:29:09	12.80	371	6.5	Wet sample = 12.8 on mudscales	
07/18/2011	05:30:42	12.83	349	6.5		
07/18/2011	05:32:22	12.84	284	6.1		
07/18/2011	05:34:02	12.86	307	6.5		
07/18/2011	05:35:42	12.85	312	6.5		
07/18/2011	05:37:22	12.83	306	6.5		
07/18/2011	05:39:02	12.85	311	6.5		
07/18/2011	05:40:42	12.82	285	6.6		
07/18/2011	05:42:22	12.85	301	6.6		
07/18/2011	05:44:02	12.84	291	6.5		
07/18/2011	05:45:42	12.84	301	6.5		
07/18/2011	05:47:22	12.84	322	6.5		
07/18/2011	05:49:02	12.83	304	6.5		
07/18/2011	05:50:42	12.85	311	6.5		
07/18/2011	05:52:22	12.84	321	6.5		
07/18/2011	05:54:02	12.83	318	6.5		
07/18/2011	05:55:42	12.86	315	6.5		
07/18/2011	05:57:22	12.85	316	6.5		
07/18/2011	05:59:02	12.83	319	6.5		
07/18/2011	06:00:42	12.82	328	6.5		
07/18/2011	06:02:22	12.75	330	6.5		
07/18/2011	06:04:02	12.75	318	6.5		
07/18/2011	06:05:42	12.77	312	6.5		
07/18/2011	06:07:01	12.78	319	6.5	End Lead Slurry	
07/18/2011	06:07:03	12.78	10	3.5	End Cement Slurry	
07/18/2011	06:07:22	12.99	-5	0.0		
07/18/2011	06:09:02	12.93	-4	0.0		
07/18/2011	06:10:42	12.93	-0	0.0		
07/18/2011	06:11:38	12.93	-0	0.0	Drop Wiper Dart	
07/18/2011	06:12:22	12.94	1	0.0		
07/18/2011	06:13:41	12.96	-1	0.0	Start Displacement	
07/18/2011	06:14:02	13.14	57	2.2		
07/18/2011	06:15:42	9.13	13	2.1		
07/18/2011	06:16:57	8.54	88	4.6	Displace 298 bbl H2O	
07/18/2011	06:17:22	8.64	93	4.7		
07/18/2011	06:17:24	8.65	94	4.7	Good returns	
07/18/2011	06:19:02	8.36	173	6.5		
07/18/2011	06:20:42	8.34	174	6.5		
07/18/2011	06:22:22	8.40	171	6.5		
07/18/2011	06:24:02	8.40	264	8.4		
07/18/2011	06:25:42	8.40	264	8.4		
07/18/2011	06:27:22	8.40	272	8.4		
07/18/2011	06:29:02	8.40	272	8.4		
07/18/2011	06:30:42	8.40	277	8.4		
07/18/2011	06:32:22	8.40	277	8.4		
07/18/2011	06:34:02	8.40	105	5.7		

Well			Field	Job Start	Customer	Job Number
RGU-33-35-198			Ryan Gulch	Jul/18/2011	Williams	BP3Z-00174
Date	Time 24-hr clock	CPF1_DENSITY LB/G	CPF1_PRESS PSI	CPF1_TTL_RATE B/M	Message	
07/18/2011	06:37:22	8.40	54	3.5		
07/18/2011	06:39:02	8.40	76	3.4		
07/18/2011	06:40:42	8.40	355	8.4		
07/18/2011	06:42:22	8.40	420	8.3		
07/18/2011	06:44:02	8.40	487	8.3		
07/18/2011	06:45:42	8.40	543	8.3		
07/18/2011	06:47:22	8.40	602	8.4		
07/18/2011	06:49:02	8.40	663	8.3		
07/18/2011	06:50:42	8.40	727	8.3		
07/18/2011	06:52:22	8.40	787	8.3		
07/18/2011	06:54:02	8.40	841	8.3		
07/18/2011	06:55:42	8.40	656	4.6		
07/18/2011	06:57:22	8.40	688	4.6		
07/18/2011	06:59:02	8.40	656	2.3		
07/18/2011	07:00:42	8.40	671	2.3		
07/18/2011	07:01:10	8.40	1179	0.0	Bump Top Plug	
07/18/2011	07:01:34	8.40	1180	0.0	Drop Bomb	
07/18/2011	07:02:22	8.40	-1	0.0		
07/18/2011	07:04:02	8.40	1	0.0		
07/18/2011	07:05:42	8.40	4	0.0		
07/18/2011	07:07:22	8.40	4	0.0		
07/18/2011	07:09:02	8.40	6	0.0		
07/18/2011	07:10:42	8.40	9	0.0		
07/18/2011	07:12:22	8.40	13	0.0		
07/18/2011	07:14:02	8.40	17	0.0		
07/18/2011	07:15:42	8.39	11	0.0		
07/18/2011	07:15:55	8.41	295	1.0	Pressure up on bomb	
07/18/2011	07:16:24	8.40	185	2.3	10 bbl H2O behind bomb	
07/18/2011	07:17:22	8.40	243	4.2		
07/18/2011	07:19:02	8.40	192	0.0		
07/18/2011	07:20:33	8.40	3	0.0	Stopped Acquisition	
07/18/2011	10:54:02	8.40	1	1.1		
07/18/2011	10:55:42	8.40	-2	0.0		
07/18/2011	10:57:22	8.40	-2	0.0		
07/18/2011	10:59:02	8.40	-1	0.0		
07/18/2011	11:00:42	8.40	-2	0.0		
07/18/2011	11:02:22	8.39	29	2.3		
07/18/2011	11:02:32	8.34	40	2.3	Start Pumping Spacer	
07/18/2011	11:02:34	8.37	45	2.3	40 bbl H2O ahead	
07/18/2011	11:04:02	8.40	113	4.7		
07/18/2011	11:05:39	8.40	107	4.7	Good returns	
07/18/2011	11:05:42	8.40	112	4.7		
07/18/2011	11:07:22	8.40	112	4.7		
07/18/2011	11:09:02	8.40	133	4.7		
07/18/2011	11:10:42	8.40	118	4.7		
07/18/2011	11:10:45	8.40	141	4.7	End Spacer	
07/18/2011	11:10:51	12.07	217	5.0	Start Cement Slurry	
07/18/2011	11:10:53	12.65	175	6.3	Start Mixing Scav Slurry	
07/18/2011	11:10:55	12.75	268	6.5	Bring to weight	
07/18/2011	11:11:47	12.81	324	6.5	End Scavenger Slurry	
07/18/2011	11:11:48	12.81	324	6.5	Start Mixing Tail Slurry	
07/18/2011	11:12:00	12.82	312	6.5	368 bbl 12.8 Tail	
07/18/2011	11:12:22	12.84	315	6.5		
07/18/2011	11:13:02	12.87	325	6.5	Took wet/dry samples	

Well			Field	Job Start	Customer	Job Number
RGU-33-35-198			Ryan Gulch	Jul/18/2011	Williams	BP3Z-00174
Date	Time 24-hr clock	CPF1_DENSITY LB/G	CPF1_PRESS PSI	CPF1_TTL_RATE B/M	Message	
07/18/2011	11:14:02	12.85	313	6.5		
07/18/2011	11:15:42	12.84	157	4.6		
07/18/2011	11:17:22	12.76	285	6.5		
07/18/2011	11:19:02	12.89	285	6.5		
07/18/2011	11:20:42	12.81	287	6.5		
07/18/2011	11:22:22	12.81	319	6.5		
07/18/2011	11:24:02	12.81	328	6.5		
07/18/2011	11:25:42	12.85	324	6.5		
07/18/2011	11:27:22	12.80	333	6.5		
07/18/2011	11:29:02	12.82	312	6.5		
07/18/2011	11:30:42	12.82	325	6.5		
07/18/2011	11:32:22	12.82	315	6.5		
07/18/2011	11:34:02	12.81	299	6.5		
07/18/2011	11:35:42	12.83	310	6.5		
07/18/2011	11:37:22	12.83	325	6.5		
07/18/2011	11:39:02	12.82	281	6.5		
07/18/2011	11:40:42	12.81	297	6.5		
07/18/2011	11:42:22	12.80	314	6.5		
07/18/2011	11:44:02	12.79	290	6.5		
07/18/2011	11:45:42	12.82	316	6.5		
07/18/2011	11:47:22	12.82	292	6.5		
07/18/2011	11:49:02	12.82	284	6.5		
07/18/2011	11:50:42	12.83	312	6.5		
07/18/2011	11:52:22	12.82	300	6.5		
07/18/2011	11:54:02	12.83	304	6.5		
07/18/2011	11:55:42	12.80	279	6.5		
07/18/2011	11:57:22	12.79	299	6.5		
07/18/2011	11:59:02	12.83	303	6.5		
07/18/2011	12:00:42	12.82	285	6.5		
07/18/2011	12:02:22	12.82	318	6.5		
07/18/2011	12:04:02	12.82	302	6.5		
07/18/2011	12:05:42	12.80	318	6.5		
07/18/2011	12:07:22	12.89	327	6.5		
07/18/2011	12:08:54	12.80	-14	2.6	End Tail Slurry	
07/18/2011	12:08:55	12.88	-14	1.0	End Cement Slurry	
07/18/2011	12:09:02	12.99	108	0.0		
07/18/2011	12:09:09	12.99	5	0.0	Drop Top Plug	
07/18/2011	12:09:12	13.00	-1	0.0	Start Displacement	
07/18/2011	12:10:42	13.00	-1	0.0		
07/18/2011	12:12:22	13.08	7	0.0		
07/18/2011	12:14:02	9.41	84	2.2		
07/18/2011	12:15:42	8.89	94	3.4		
07/18/2011	12:16:32	8.74	247	6.5	Displace 144 bbl H2O	
07/18/2011	12:16:48	8.50	227	6.5	Good returns	
07/18/2011	12:17:22	8.56	263	6.5		
07/18/2011	12:19:02	8.05	243	6.2		
07/18/2011	12:20:42	8.40	334	6.5		
07/18/2011	12:21:49	8.39	331	6.5	Cement to surface	
07/18/2011	12:22:22	8.40	445	8.4		
07/18/2011	12:24:02	8.40	485	8.3		
07/18/2011	12:25:42	8.40	525	8.4		
07/18/2011	12:27:22	8.40	562	8.4		
07/18/2011	12:29:02	8.40	599	8.4		
07/18/2011	12:30:42	8.40	645	8.4		

Well			Field	Job Start	Customer	Job Number
RGU-33-35-198			Ryan Gulch	Jul/18/2011	Williams	BP3Z-00174
Date	Time 24-hr clock	CPF1_DENSITY LB/G	CPF1_PRESS PSI	CPF1_TTL_RATE B/M	Message	
07/18/2011	12:34:02	8.40	488	4.6		
07/18/2011	12:35:42	8.40	442	2.3		
07/18/2011	12:36:54	8.40	1471	0.0	End Displacement	
07/18/2011	12:36:55	8.40	1509	0.0	Bump Top Plug	
07/18/2011	12:36:59	8.40	1502	0.0	Bumped plug @ 1500 PSI	
07/18/2011	12:37:22	8.40	1497	0.0		
07/18/2011	12:38:02	8.40	1497	0.0	Float held	
07/18/2011	12:39:02	8.40	-1	0.0		
07/18/2011	12:39:52	8.40	-0	0.0	1 bbl back	
07/18/2011	12:40:42	8.40	-1	0.0		
07/18/2011	12:42:22	8.40	5	0.0		
07/18/2011	12:44:02	8.40	-0	0.0		
07/18/2011	17:12:22	8.39	-2	0.0		
07/18/2011	17:14:02	8.39	-2	0.0		
07/18/2011	17:15:42	8.39	-2	0.0		
07/18/2011	17:17:22	8.39	-1	0.0		
07/18/2011	17:19:02	8.39	-1	0.0		
07/18/2011	17:20:42	8.39	-1	0.0		
07/18/2011	17:22:22	8.39	-2	0.0		
07/18/2011	17:24:02	8.39	-1	0.0		
07/18/2011	17:25:42	8.39	-2	0.0		
07/18/2011	17:27:22	8.39	-2	0.0		
07/18/2011	17:29:02	8.39	-1	0.0		
07/18/2011	17:30:42	8.39	-1	0.0		
07/18/2011	17:32:22	8.39	-2	0.0		
07/18/2011	17:34:02	8.39	-1	0.0		
07/18/2011	17:35:42	8.39	-1	0.0		
07/18/2011	17:37:22	8.39	-1	0.0		
07/18/2011	17:39:02	8.39	-1	0.0		
07/18/2011	17:40:42	8.39	-1	0.0		
07/18/2011	17:42:22	8.39	-1	0.0		
07/18/2011	17:44:02	8.39	-2	0.0		
07/18/2011	17:45:42	8.39	-3	0.0		
07/18/2011	17:47:22	8.39	-2	0.0		
07/18/2011	17:49:02	8.39	-2	0.0		
07/18/2011	17:50:42	8.39	-2	0.0		
07/18/2011	17:52:22	8.39	-7	0.0		
07/18/2011	17:53:41	8.39	-7	0.0	Start pumping topout	
07/18/2011	17:54:02	8.39	-6	0.0		
07/18/2011	17:55:42	8.39	-6	0.0		
07/18/2011	17:57:22	13.75	68	4.6		
07/18/2011	17:59:02	14.92	78	3.0		
07/18/2011	18:00:42	13.85	-10	2.6		
07/18/2011	18:02:22	9.22	30	2.1		
07/18/2011	18:04:02	8.46	-7	0.1		
07/18/2011	18:04:18	8.46	-7	0.1	Pumped 9 bbl cement	

Well RGU-33-35-198	Field Ryan Gulch	Job Start Jul/18/2011	Customer Williams	Job Number BP3Z-00174
------------------------------	----------------------------	---------------------------------	-----------------------------	---------------------------------

Post Job Summary

Average Pump Rates, bbl/min					Volume of Fluid Injected, bbl			
Slurry 0.2	N2	Mud	Maximum Rate 4.7		Total Slurry 267.0	Mud 0.0	Spacer 40.0	N2
Treating Pressure Summary, psi					Breakdown Fluid			
Maximum 88	Final -8	Average 68	Bump Plug to 1500	Breakdown	Type	Volume bbl	Density lb/gal	
Avg. N2 Percent %		Designed Slurry Volume 627.0 bbl	Displacement 144.0 bbl	Mix Water Temp 77 degF	Cement Circulated to Surface? <input checked="" type="checkbox"/>		Volume 100.0 bbl	
					Washed Thru Perfs <input type="checkbox"/>		To ft	
Customer or Authorized Representative Andrew Brunk			Schlumberger Supervisor Matt Fair			Circulation Lost <input type="checkbox"/>		Job Completed <input checked="" type="checkbox"/>
						-		-



Service Quality Evaluation

Client:	Williams
Field:	Ryan Gulch
Rig:	Cyclone 29
Well:	RGU-33-35-198
Service Line:	Cementing
Job Type:	2 stage surface

Service Order #:	
Date:	Jul/18/2011
Operating Time (hh:mm):	00:00
Client Rep:	Andrew Brunk
Schlumberger Engineer:	Matt Fair
Schlumberger FSM:	

Main Objective:

To be completed by Company Rep. Please answer Y (Yes) or N (No) and add any comments below.

		Score	Yes / No		Result
1	HSE				
1a	Free of lost time injury and compliance with SLB and loc. spec. HSE practice	5	yes <input checked="" type="checkbox"/>	no <input type="checkbox"/>	5
1b	Free of environmental spill or non-compliant discharge	5	yes <input checked="" type="checkbox"/>	no <input type="checkbox"/>	5
1c	Wellsite left clean	4	yes <input checked="" type="checkbox"/>	no <input type="checkbox"/>	4
Sub-total					100%

2	Design / Preparation				
2a	Program incl. job simulation (CemCADE) & pump schedule / tool hydraulic calcs	3	yes <input checked="" type="checkbox"/>	no <input type="checkbox"/>	3
2b	Equipment maintenance schedule completed / Green tagged	2	yes <input checked="" type="checkbox"/>	no <input type="checkbox"/>	2
2c	All materials and equipment required for job/contingency checked & on location	2	yes <input checked="" type="checkbox"/>	no <input type="checkbox"/>	2
2d	Safety / pre-job meeting conducted with all involved present	2	yes <input checked="" type="checkbox"/>	no <input type="checkbox"/>	2
Sub-total					100%

3	Execution				
3a	Lost time < 30 mins	3	yes <input checked="" type="checkbox"/>	no <input type="checkbox"/>	3
3b	Equipment pressure tested succesfully	3	yes <input checked="" type="checkbox"/>	no <input type="checkbox"/>	3
3c	All key parameters monitored and recorded accurately (Pressure, Rate, Density)	2	yes <input checked="" type="checkbox"/>	no <input type="checkbox"/>	2
3d	Plugs / darts released and tested succesfully	2	yes <input checked="" type="checkbox"/>	no <input type="checkbox"/>	2
3e	Density variation met expectations	2	yes <input checked="" type="checkbox"/>	no <input type="checkbox"/>	2
3f	Personnel performed as per expectations	2	yes <input checked="" type="checkbox"/>	no <input type="checkbox"/>	2
3g	Equipment performed as per expectations	2	yes <input checked="" type="checkbox"/>	no <input type="checkbox"/>	2
3h	Job pumped as per design	3	yes <input checked="" type="checkbox"/>	no <input type="checkbox"/>	3
3i	Did job start on time	2	yes <input checked="" type="checkbox"/>	no <input type="checkbox"/>	2
3j	Free of Operational failures (screen out, Cementing Example, etc.)	3	yes <input checked="" type="checkbox"/>	no <input type="checkbox"/>	3
Sub-total					100%

4	Evaluation				
4a	Main job objective achieved with no consequential non-productive time	10	yes <input checked="" type="checkbox"/>	no <input type="checkbox"/>	10
Sub-total					100%

Total 100%

Comments: (Please include a brief explanation for a "NO" response and summarize any innovations attempted on this well.)

Client:	Schlumberger:
Client Signature:	Schlumberger Signature: