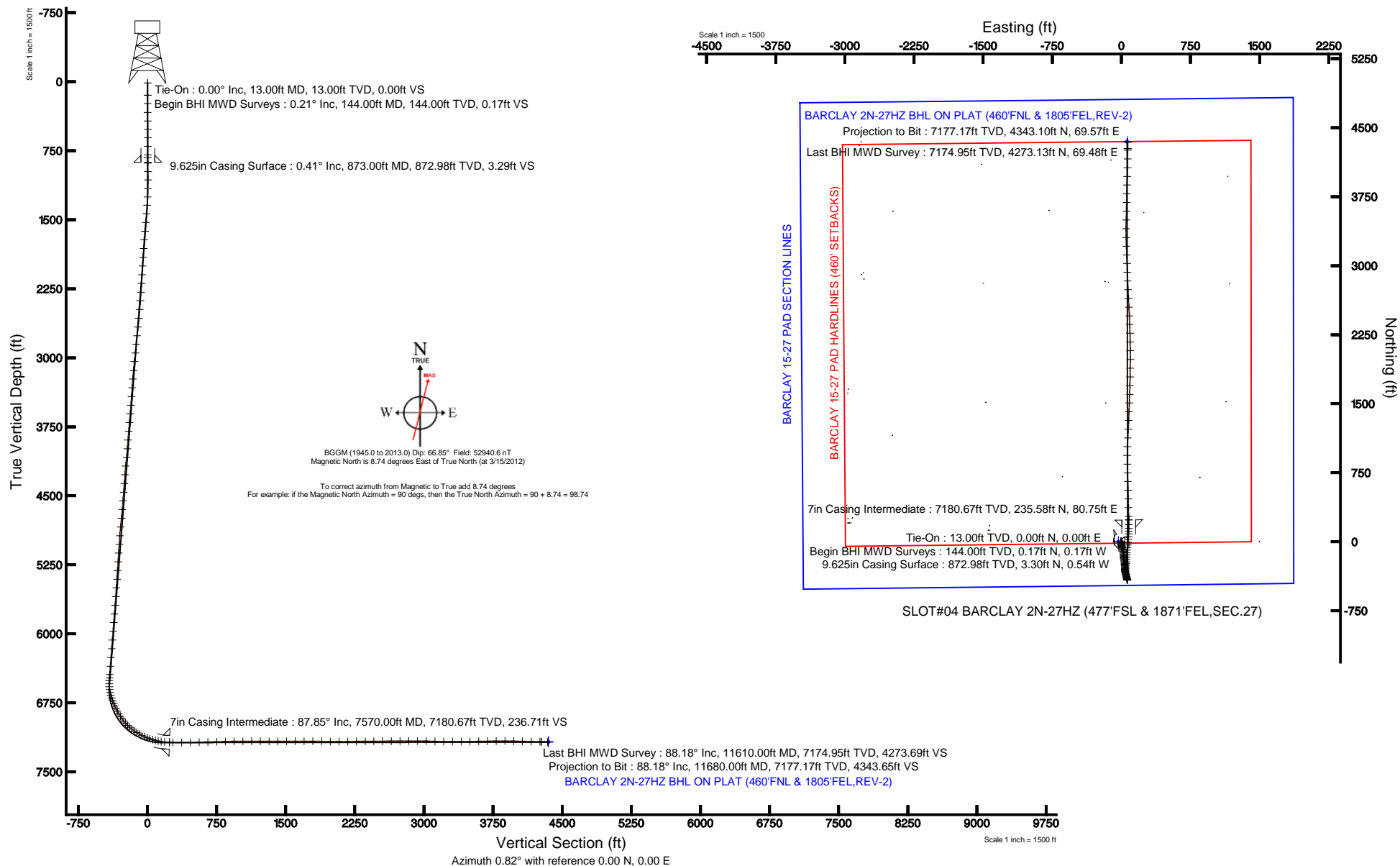


# KERR-MCGEE OIL & GAS ONSHORE LP

Location: COLORADO Slot: SLOT#04 BARCLAY 2N-27HZ (477'FSL & 1871'FEL,SEC.27)  
 Field: WELD COUNTY (KERR MCGEE) Well: BARCLAY 2N-27HZ  
 Facility: SEC.27-T3N-R66W Wellbore: BARCLAY 2N-27HZ PWB

Plot reference wellpath is BARCLAY 2N-27HZ (REV-A.0) PWP	
True vertical depths are referenced to ENSIGN 145 (RKB)	Grid System: NAD83 / Lambert Colorado SP, Northern Zone (501), US feet
Measured depths are referenced to ENSIGN 145 (RKB)	North Reference: True north
ENSIGN 145 (RKB) to Mean Sea Level: 4969 feet	Scale: True distance
Mean Sea Level to Mud line (At Slot: SLOT#04 BARCLAY 2N-27HZ (477'FSL & 1871'FEL,SEC.27)): 0 feet	Depths are in feet
Coordinates are in feet referenced to Slot	Created by: willjet02 on 3/20/2012





# Actual Wellpath Report

BARCLAY 2N-27HZ AWP

Page 1 of 6



REFERENCE WELLPATH IDENTIFICATION			
Operator	KERR-MCGEE OIL & GAS ONSHORE LP	Slot	SLOT#04 BARCLAY 2N-27HZ (477'FSL & 1871'FEL,SEC.27)
Area	COLORADO	Well	BARCLAY 2N-27HZ
Field	WELD COUNTY (KERR MCGEE)	Wellbore	BARCLAY 2N-27HZ AWP
Facility	SEC.27-T3N-R66W		

REPORT SETUP INFORMATION			
Projection System	NAD83 / Lambert Colorado SP, Northern Zone (501), US feet	Software System	WellArchitect® 3.0.2
North Reference	True	User	Wilsjef02
Scale	0.999957	Report Generated	3/19/2012 at 12:37:14
Convergence at slot	0.48° East	Database/Source file	WellArchitectDB\BARCLAY_2N-27HZ_AWP.xml

WELLPATH LOCATION						
	Local coordinates		Grid coordinates		Geographic coordinates	
	North[ft]	East[ft]	Easting[US ft]	Northing[US ft]	Latitude	Longitude
Slot Location	-4347.35	2825.67	3206602.83	1312996.24	40°11'24.742"N	104°45'37.678"W
Facility Reference Pt			3203741.63	1317320.00	40°12'07.704"N	104°46'14.088"W
Field Reference Pt			3197771.84	1268891.29	40°04'09.600"N	104°47'36.000"W

WELLPATH DATUM			
Calculation method	Minimum curvature	ENSIGN 145 (RKB) to Facility Vertical Datum	4969.00ft
Horizontal Reference Pt	Slot	ENSIGN 145 (RKB) to Mean Sea Level	4969.00ft
Vertical Reference Pt	ENSIGN 145 (RKB)	ENSIGN 145 (RKB) to Mud Line at Slot (SLOT#04 BARCLAY 2N-27HZ (477'FSL & 1871'FEL,SEC.27))	4969.00ft
MD Reference Pt	ENSIGN 145 (RKB)	Section Origin	N 0.00, E 0.00 ft
Field Vertical Reference	Mean Sea Level	Section Azimuth	0.82°



# Actual Wellpath Report

BARCLAY 2N-27HZ AWP

Page 2 of 6



## REFERENCE WELLPATH IDENTIFICATION

Operator	KERR-MCGEE OIL & GAS ONSHORE LP	Slot	SLOT#04 BARCLAY 2N-27HZ (477'FSL & 1871'FEL,SEC.27)
Area	COLORADO	Well	BARCLAY 2N-27HZ
Field	WELD COUNTY (KERR MCGEE)	Wellbore	BARCLAY 2N-27HZ AWP
Facility	SEC.27-T3N-R66W		

## WELLPATH DATA (150 stations) † = interpolated/extrapolated station

MD [ft]	Inclination [°]	Azimuth [°]	TVD [ft]	Vert Sect [ft]	North [ft]	East [ft]	Latitude	Longitude	DLS [°/100ft]	Comments
0.00†	0.000	315.460	0.00	0.00	0.00	0.00	40°11'24.742"N	104°45'37.678"W	0.00	
13.00	0.000	315.460	13.00	0.00	0.00	0.00	40°11'24.742"N	104°45'37.678"W	0.00	Tie-On
144.00	0.210	315.460	144.00	0.17	0.17	-0.17	40°11'24.744"N	104°45'37.680"W	0.16	Begin BHI MWD Surveys
236.00	0.150	341.660	236.00	0.40	0.41	-0.32	40°11'24.746"N	104°45'37.682"W	0.11	
332.00	0.310	316.610	332.00	0.71	0.71	-0.54	40°11'24.749"N	104°45'37.685"W	0.19	
424.00	0.470	322.520	424.00	1.18	1.19	-0.94	40°11'24.754"N	104°45'37.690"W	0.18	
516.00	0.340	305.130	515.99	1.63	1.65	-1.40	40°11'24.758"N	104°45'37.696"W	0.19	
608.00	0.500	285.210	607.99	1.88	1.91	-2.01	40°11'24.761"N	104°45'37.704"W	0.23	
700.00	0.630	53.700	699.99	2.29	2.32	-1.99	40°11'24.765"N	104°45'37.704"W	1.11	
792.00	0.580	57.840	791.98	2.85	2.86	-1.18	40°11'24.770"N	104°45'37.693"W	0.07	
823.00	0.620	58.510	822.98	3.02	3.04	-0.91	40°11'24.772"N	104°45'37.690"W	0.13	
883.00	0.370	45.140	882.98	3.33	3.34	-0.49	40°11'24.775"N	104°45'37.684"W	0.46	
975.00	0.340	63.150	974.98	3.67	3.68	-0.04	40°11'24.778"N	104°45'37.679"W	0.13	
1067.00	0.190	52.620	1066.98	3.90	3.89	0.32	40°11'24.780"N	104°45'37.674"W	0.17	
1159.00	1.110	163.030	1158.97	3.14	3.13	0.71	40°11'24.773"N	104°45'37.669"W	1.29	
1251.00	2.220	185.280	1250.93	0.52	0.50	0.80	40°11'24.747"N	104°45'37.668"W	1.37	
1342.00	4.390	187.120	1341.78	-4.70	-4.71	0.21	40°11'24.695"N	104°45'37.675"W	2.39	
1434.00	5.060	195.560	1433.46	-12.13	-12.11	-1.32	40°11'24.622"N	104°45'37.695"W	1.05	
1529.00	5.030	175.580	1528.10	-20.33	-20.30	-2.12	40°11'24.541"N	104°45'37.705"W	1.84	
1624.00	5.480	172.520	1622.70	-28.96	-28.95	-1.21	40°11'24.456"N	104°45'37.694"W	0.56	
1719.00	3.950	175.730	1717.38	-36.71	-36.71	-0.37	40°11'24.379"N	104°45'37.683"W	1.63	
1814.00	3.830	173.230	1812.16	-43.12	-43.12	0.24	40°11'24.316"N	104°45'37.675"W	0.22	
1909.00	3.440	173.010	1906.97	-49.08	-49.10	0.96	40°11'24.257"N	104°45'37.666"W	0.41	
2004.00	3.380	152.200	2001.80	-54.37	-54.41	2.62	40°11'24.204"N	104°45'37.644"W	1.30	
2099.00	3.620	171.470	2096.63	-59.78	-59.85	4.37	40°11'24.151"N	104°45'37.622"W	1.26	
2194.00	4.040	163.430	2191.42	-65.94	-66.03	5.77	40°11'24.090"N	104°45'37.604"W	0.72	
2289.00	4.320	149.350	2286.17	-72.18	-72.31	8.55	40°11'24.027"N	104°45'37.568"W	1.12	
2384.00	4.700	153.870	2380.87	-78.70	-78.88	12.08	40°11'23.962"N	104°45'37.522"W	0.55	
2479.00	5.340	157.520	2475.51	-86.23	-86.46	15.49	40°11'23.888"N	104°45'37.478"W	0.75	
2574.00	5.580	169.830	2570.08	-94.83	-95.09	17.99	40°11'23.802"N	104°45'37.446"W	1.26	
2669.00	6.220	168.460	2664.58	-104.39	-104.68	19.84	40°11'23.708"N	104°45'37.422"W	0.69	
2764.00	6.010	168.460	2759.04	-114.27	-114.60	21.86	40°11'23.610"N	104°45'37.396"W	0.22	
2859.00	5.940	174.100	2853.52	-124.01	-124.36	23.36	40°11'23.513"N	104°45'37.377"W	0.62	
2953.00	5.890	177.700	2947.02	-133.66	-134.02	24.06	40°11'23.418"N	104°45'37.368"W	0.40	
3048.00	5.930	179.370	3041.52	-143.43	-143.80	24.31	40°11'23.321"N	104°45'37.365"W	0.19	
3144.00	5.460	174.430	3137.04	-152.93	-153.30	24.81	40°11'23.227"N	104°45'37.358"W	0.71	
3239.00	4.140	180.700	3231.71	-160.85	-161.23	25.20	40°11'23.149"N	104°45'37.353"W	1.49	
3333.00	3.980	184.760	3325.47	-167.50	-167.87	24.89	40°11'23.083"N	104°45'37.357"W	0.35	
3428.00	4.070	171.220	3420.24	-174.11	-174.49	25.13	40°11'23.018"N	104°45'37.354"W	1.00	
3523.00	4.380	167.460	3514.98	-180.97	-181.36	26.43	40°11'22.950"N	104°45'37.337"W	0.44	
3618.00	5.040	163.930	3609.66	-188.49	-188.91	28.38	40°11'22.875"N	104°45'37.312"W	0.76	
3713.00	5.170	167.370	3704.29	-196.64	-197.10	30.47	40°11'22.794"N	104°45'37.285"W	0.35	
3808.00	4.330	171.170	3798.96	-204.34	-204.82	31.95	40°11'22.718"N	104°45'37.266"W	0.94	
3903.00	4.480	170.540	3893.68	-211.53	-212.02	33.11	40°11'22.647"N	104°45'37.251"W	0.17	
3998.00	4.890	176.630	3988.36	-219.22	-219.73	33.96	40°11'22.571"N	104°45'37.240"W	0.68	
4093.00	5.720	174.000	4082.95	-227.96	-228.48	34.69	40°11'22.484"N	104°45'37.231"W	0.91	
4188.00	5.900	171.960	4177.47	-237.48	-238.02	35.87	40°11'22.390"N	104°45'37.216"W	0.29	
4283.00	4.340	180.360	4272.09	-245.90	-246.45	36.53	40°11'22.307"N	104°45'37.207"W	1.82	
4378.00	4.070	181.140	4366.83	-252.87	-253.41	36.44	40°11'22.238"N	104°45'37.208"W	0.29	
4472.00	3.920	169.780	4460.60	-259.36	-259.91	36.95	40°11'22.174"N	104°45'37.202"W	0.86	
4567.00	4.740	172.850	4555.33	-266.43	-267.00	38.01	40°11'22.103"N	104°45'37.188"W	0.90	
4662.00	5.240	177.340	4649.97	-274.65	-275.23	38.70	40°11'22.022"N	104°45'37.179"W	0.67	
4757.00	5.780	183.440	4744.53	-283.76	-284.34	38.62	40°11'21.932"N	104°45'37.180"W	0.84	
4852.00	5.560	181.630	4839.07	-293.14	-293.71	38.20	40°11'21.840"N	104°45'37.186"W	0.30	
4947.00	4.090	173.230	4933.73	-301.10	-301.68	38.47	40°11'21.761"N	104°45'37.182"W	1.71	
5042.00	3.870	174.570	5028.50	-307.64	-308.24	39.17	40°11'21.696"N	104°45'37.173"W	0.25	
5136.00	3.860	177.320	5122.29	-313.95	-314.55	39.62	40°11'21.634"N	104°45'37.168"W	0.20	
5231.00	4.030	167.110	5217.06	-320.39	-321.00	40.51	40°11'21.570"N	104°45'37.156"W	0.76	
5326.00	3.570	163.070	5311.85	-326.45	-327.09	42.12	40°11'21.510"N	104°45'37.135"W	0.56	
5421.00	3.960	163.930	5406.65	-332.41	-333.07	43.89	40°11'21.451"N	104°45'37.113"W	0.41	



# Actual Wellpath Report

BARCLAY 2N-27HZ AWP

Page 3 of 6



## REFERENCE WELLPATH IDENTIFICATION

Operator	KERR-MCGEE OIL & GAS ONSHORE LP	Slot	SLOT#04 BARCLAY 2N-27HZ (477'FSL & 1871'FEL,SEC.27)
Area	COLORADO	Well	BARCLAY 2N-27HZ
Field	WELD COUNTY (KERR MCGEE)	Wellbore	BARCLAY 2N-27HZ AWP
Facility	SEC.27-T3N-R66W		

## WELLPATH DATA (150 stations) † = interpolated/extrapolated station

MD [ft]	Inclination [°]	Azimuth [°]	TVD [ft]	Vert Sect [ft]	North [ft]	East [ft]	Latitude	Longitude	DLS [°/100ft]	Comments
5516.00	4.380	157.560	5501.40	-338.88	-339.57	46.18	40°11'21.386"N	104°45'37.083"W	0.66	
5611.00	4.220	161.000	5596.13	-345.50	-346.23	48.70	40°11'21.321"N	104°45'37.050"W	0.32	
5706.00	4.340	164.180	5690.87	-352.23	-352.99	50.82	40°11'21.254"N	104°45'37.023"W	0.28	
5801.00	4.530	166.620	5785.58	-359.31	-360.10	52.67	40°11'21.183"N	104°45'36.999"W	0.28	
5895.00	5.040	169.720	5879.25	-366.96	-367.78	54.26	40°11'21.108"N	104°45'36.979"W	0.61	
5990.00	4.520	164.970	5973.92	-374.66	-375.50	55.98	40°11'21.031"N	104°45'36.957"W	0.69	
6085.00	4.710	169.640	6068.61	-382.08	-382.95	57.65	40°11'20.958"N	104°45'36.935"W	0.44	
6180.00	4.260	167.600	6163.32	-389.35	-390.23	59.11	40°11'20.886"N	104°45'36.916"W	0.50	
6275.00	4.650	168.840	6258.04	-396.55	-397.46	60.61	40°11'20.814"N	104°45'36.897"W	0.42	
6370.00	4.920	167.790	6352.71	-404.28	-405.22	62.22	40°11'20.738"N	104°45'36.876"W	0.30	
6461.00	4.500	167.040	6443.40	-411.55	-412.51	63.85	40°11'20.666"N	104°45'36.855"W	0.47	
6499.00	4.310	166.160	6481.29	-414.38	-415.35	64.52	40°11'20.638"N	104°45'36.847"W	0.53	
6530.00	3.140	168.200	6512.22	-416.34	-417.31	64.97	40°11'20.618"N	104°45'36.841"W	3.80	
6562.00	0.780	259.700	6544.20	-417.24	-418.21	64.94	40°11'20.609"N	104°45'36.841"W	10.17	
6594.00	4.450	328.590	6576.17	-416.23	-417.19	64.08	40°11'20.619"N	104°45'36.852"W	13.22	
6625.00	8.720	341.890	6606.96	-412.98	-413.93	62.72	40°11'20.652"N	104°45'36.870"W	14.54	
6657.00	12.360	341.960	6638.41	-407.45	-408.36	60.91	40°11'20.707"N	104°45'36.893"W	11.38	
6689.00	16.440	341.190	6669.40	-399.94	-400.82	58.38	40°11'20.781"N	104°45'36.926"W	12.76	
6720.00	19.650	340.440	6698.87	-390.92	-391.75	55.22	40°11'20.871"N	104°45'36.966"W	10.38	
6752.00	22.580	342.930	6728.72	-380.03	-380.80	51.62	40°11'20.979"N	104°45'37.013"W	9.57	
6784.00	23.570	345.760	6758.16	-368.00	-368.73	48.24	40°11'21.098"N	104°45'37.056"W	4.65	
6815.00	24.470	348.880	6786.48	-355.73	-356.42	45.48	40°11'21.220"N	104°45'37.092"W	5.02	
6847.00	26.550	356.670	6815.36	-342.11	-342.77	43.78	40°11'21.355"N	104°45'37.114"W	12.32	
6878.00	28.410	3.340	6842.87	-327.83	-328.49	43.81	40°11'21.496"N	104°45'37.113"W	11.59	
6910.00	29.720	5.900	6870.84	-312.32	-313.00	45.07	40°11'21.649"N	104°45'37.097"W	5.64	
6942.00	33.060	6.570	6898.16	-295.73	-296.43	46.88	40°11'21.813"N	104°45'37.074"W	10.49	
6973.00	36.130	7.120	6923.67	-278.23	-278.96	48.98	40°11'21.985"N	104°45'37.047"W	9.95	
7005.00	38.290	5.750	6949.16	-258.97	-259.73	51.15	40°11'22.175"N	104°45'37.019"W	7.23	
7036.00	41.550	5.420	6972.93	-239.15	-239.94	53.08	40°11'22.371"N	104°45'36.994"W	10.54	
7068.00	45.050	4.050	6996.21	-217.26	-218.07	54.88	40°11'22.587"N	104°45'36.971"W	11.32	
7100.00	48.680	3.050	7018.09	-193.94	-194.77	56.32	40°11'22.817"N	104°45'36.952"W	11.57	
7131.00	52.700	3.220	7037.72	-169.98	-170.82	57.64	40°11'23.054"N	104°45'36.935"W	12.97	
7163.00	56.410	3.700	7056.28	-143.94	-144.80	59.21	40°11'23.311"N	104°45'36.915"W	11.66	
7195.00	58.270	4.840	7073.55	-117.05	-117.94	61.22	40°11'23.577"N	104°45'36.889"W	6.54	
7226.00	61.280	6.710	7089.15	-90.37	-91.30	63.92	40°11'23.840"N	104°45'36.854"W	11.02	
7258.00	61.930	7.240	7104.37	-62.38	-63.35	67.34	40°11'24.116"N	104°45'36.810"W	2.50	
7290.00	63.770	6.400	7118.97	-34.07	-35.08	70.72	40°11'24.395"N	104°45'36.767"W	6.21	
7321.00	67.550	4.730	7131.75	-5.92	-6.98	73.45	40°11'24.673"N	104°45'36.732"W	13.14	
7353.00	72.290	3.920	7142.73	24.07	22.98	75.71	40°11'24.969"N	104°45'36.702"W	15.00	
7384.00	74.960	3.140	7151.47	53.77	52.67	77.54	40°11'25.262"N	104°45'36.679"W	8.94	
7416.00	75.130	2.810	7159.73	84.67	83.54	79.15	40°11'25.568"N	104°45'36.658"W	1.13	
7448.00	76.800	2.460	7167.49	115.69	114.55	80.58	40°11'25.874"N	104°45'36.640"W	5.33	
7479.00	80.540	0.950	7173.58	146.08	144.93	81.48	40°11'26.174"N	104°45'36.628"W	12.98	
7519.00	86.410	359.190	7178.12	185.80	184.65	81.52	40°11'26.567"N	104°45'36.628"W	15.31	
7570.00†	87.848	359.075	7180.67	236.71	235.58	80.75	40°11'27.070"N	104°45'36.637"W	2.83	7" Casing Point
7608.00	88.920	358.990	7181.75	274.68	273.56	80.11	40°11'27.445"N	104°45'36.646"W	2.83	
7703.00	89.390	358.410	7183.15	369.60	368.52	77.95	40°11'28.384"N	104°45'36.674"W	0.79	
7798.00	91.570	358.950	7182.35	464.53	463.49	75.77	40°11'29.322"N	104°45'36.702"W	2.36	
7893.00	91.570	358.530	7179.75	559.43	558.43	73.68	40°11'30.260"N	104°45'36.729"W	0.44	
7988.00	91.940	358.120	7176.84	654.29	653.34	70.90	40°11'31.198"N	104°45'36.764"W	0.58	
8083.00	90.980	357.850	7174.42	749.14	748.25	67.56	40°11'32.136"N	104°45'36.807"W	1.05	
8178.00	91.360	359.280	7172.48	844.05	843.20	65.18	40°11'33.074"N	104°45'36.838"W	1.56	
8273.00	91.260	0.160	7170.31	939.00	938.17	64.72	40°11'34.013"N	104°45'36.844"W	0.93	
8368.00	90.550	1.730	7168.81	1033.99	1033.14	66.29	40°11'34.952"N	104°45'36.824"W	1.81	
8463.00	90.030	3.140	7168.33	1128.95	1128.06	70.32	40°11'35.889"N	104°45'36.772"W	1.58	
8558.00	89.410	2.960	7168.79	1223.87	1222.92	75.38	40°11'36.827"N	104°45'36.707"W	0.68	
8653.00	89.810	2.610	7169.44	1318.81	1317.80	79.99	40°11'37.765"N	104°45'36.647"W	0.56	
8748.00	90.120	2.020	7169.49	1413.78	1412.73	83.83	40°11'38.703"N	104°45'36.598"W	0.70	
8843.00	90.760	1.810	7168.76	1508.76	1507.67	87.01	40°11'39.641"N	104°45'36.557"W	0.71	
8937.00	89.630	2.030	7168.44	1602.74	1601.61	90.16	40°11'40.569"N	104°45'36.516"W	1.22	



# Actual Wellpath Report

BARCLAY 2N-27HZ AWP

Page 4 of 6



## REFERENCE WELLPATH IDENTIFICATION

Operator	KERR-MCGEE OIL & GAS ONSHORE LP	Slot	SLOT#04 BARCLAY 2N-27HZ (477'FSL & 1871'FEL,SEC.27)
Area	COLORADO	Well	BARCLAY 2N-27HZ
Field	WELD COUNTY (KERR MCGEE)	Wellbore	BARCLAY 2N-27HZ AWP
Facility	SEC.27-T3N-R66W		

## WELLPATH DATA (150 stations)

MD [ft]	Inclination [°]	Azimuth [°]	TVD [ft]	Vert Sect [ft]	North [ft]	East [ft]	Latitude	Longitude	DLS [°/100ft]	Comments
9032.00	90.030	1.500	7168.73	1697.73	1696.57	93.08	40°11'41.507"N	104°45'36.479"W	0.70	
9127.00	88.950	1.270	7169.57	1792.72	1791.54	95.38	40°11'42.446"N	104°45'36.449"W	1.16	
9222.00	89.290	0.580	7171.03	1887.71	1886.51	96.91	40°11'43.384"N	104°45'36.429"W	0.81	
9317.00	89.530	0.010	7172.01	1982.70	1981.50	97.40	40°11'44.323"N	104°45'36.423"W	0.65	
9412.00	90.090	359.720	7172.32	2077.68	2076.50	97.18	40°11'45.262"N	104°45'36.426"W	0.66	
9507.00	90.500	359.140	7171.84	2172.65	2171.50	96.23	40°11'46.201"N	104°45'36.438"W	0.75	
9601.00	90.760	358.540	7170.80	2266.59	2265.47	94.33	40°11'47.129"N	104°45'36.462"W	0.70	
9696.00	90.430	357.910	7169.82	2361.49	2360.42	91.39	40°11'48.068"N	104°45'36.500"W	0.75	
9791.00	90.430	357.300	7169.10	2456.33	2455.33	87.42	40°11'49.006"N	104°45'36.551"W	0.64	
9886.00	90.400	356.860	7168.41	2551.13	2550.21	82.58	40°11'49.943"N	104°45'36.614"W	0.46	
9981.00	90.060	357.480	7168.03	2645.94	2645.09	77.89	40°11'50.881"N	104°45'36.674"W	0.74	
10076.00	90.340	357.040	7167.70	2740.75	2739.98	73.34	40°11'51.818"N	104°45'36.733"W	0.55	
10171.00	90.490	357.560	7167.01	2835.57	2834.87	68.87	40°11'52.756"N	104°45'36.790"W	0.57	
10266.00	90.090	358.000	7166.53	2930.43	2929.80	65.19	40°11'53.694"N	104°45'36.838"W	0.63	
10361.00	88.430	358.130	7167.76	3025.31	3024.73	61.98	40°11'54.632"N	104°45'36.879"W	1.75	
10455.00	88.240	357.770	7170.49	3119.15	3118.63	58.62	40°11'55.560"N	104°45'36.923"W	0.43	
10550.00	89.190	357.910	7172.62	3214.00	3213.54	55.04	40°11'56.498"N	104°45'36.969"W	1.01	
10645.00	90.400	358.440	7172.96	3308.90	3308.49	52.02	40°11'57.436"N	104°45'37.008"W	1.39	
10740.00	90.300	0.460	7172.38	3403.86	3403.48	51.10	40°11'58.375"N	104°45'37.019"W	2.13	
10835.00	90.580	1.720	7171.65	3498.86	3498.46	52.91	40°11'59.314"N	104°45'36.996"W	1.36	
10930.00	91.050	1.450	7170.30	3593.84	3593.41	55.54	40°12'00.252"N	104°45'36.962"W	0.57	
11025.00	91.170	0.890	7168.46	3688.82	3688.37	57.48	40°12'01.190"N	104°45'36.937"W	0.60	
11120.00	90.520	1.070	7167.06	3783.81	3783.35	59.10	40°12'02.129"N	104°45'36.916"W	0.71	
11215.00	89.510	2.080	7167.03	3878.80	3878.31	61.71	40°12'03.067"N	104°45'36.883"W	1.50	
11309.00	89.040	1.560	7168.22	3972.77	3972.26	64.70	40°12'03.996"N	104°45'36.844"W	0.75	
11404.00	88.860	1.330	7169.96	4067.75	4067.21	67.09	40°12'04.934"N	104°45'36.813"W	0.31	
11499.00	88.640	0.530	7172.04	4162.73	4162.17	68.64	40°12'05.873"N	104°45'36.793"W	0.87	
11594.00	88.420	0.410	7174.47	4257.70	4257.14	69.42	40°12'06.811"N	104°45'36.783"W	0.26	
11610.00	88.180	0.070	7174.95	4273.69	4273.13	69.48	40°12'06.969"N	104°45'36.783"W	2.60	Last BHI MWD Survey
11680.00	88.180	0.070	7177.17	4343.65	4343.10	69.57	40°12'07.660"N	104°45'36.781"W	0.00	Projection to Bit

## HOLE & CASING SECTIONS - Ref Wellbore: BARCLAY 2N-27HZ AWP Ref Wellpath: BARCLAY 2N-27HZ AWP

String/Diameter	Start MD [ft]	End MD [ft]	Interval [ft]	Start TVD [ft]	End TVD [ft]	Start N/S [ft]	Start E/W [ft]	End N/S [ft]	End E/W [ft]
13.5in Open Hole	13.00	873.00	860.00	13.00	872.98	0.00	0.00	3.30	-0.54
9.625in Casing Surface	13.00	873.00	860.00	13.00	872.98	0.00	0.00	3.30	-0.54
8.75in Open Hole	873.00	7577.00	6704.00	872.98	7180.93	3.30	-0.54	242.57	80.64
7in Casing Intermediate	13.00	7570.00	7557.00	13.00	7180.67	0.00	0.00	235.58	80.75
6.125in Open Hole	7570.00	11680.00	4110.00	7180.67	7177.17	235.58	80.75	4343.10	69.57



# Actual Wellpath Report

BARCLAY 2N-27HZ AWP

Page 5 of 6



REFERENCE WELLPATH IDENTIFICATION			
Operator	KERR-MCGEE OIL & GAS ONSHORE LP	Slot	SLOT#04 BARCLAY 2N-27HZ (477'FSL & 1871'FEL,SEC.27)
Area	COLORADO	Well	BARCLAY 2N-27HZ
Field	WELD COUNTY (KERR MCGEE)	Wellbore	BARCLAY 2N-27HZ AWP
Facility	SEC.27-T3N-R66W		

TARGETS									
Name	MD [ft]	TVD [ft]	North [ft]	East [ft]	Grid East [US ft]	Grid North [US ft]	Latitude	Longitude	Shape
BARCLAY 15-27 PAD SECTION LINES		-5.00	0.32	-32.10	3206570.73	1312996.29	40°11'24.745"N	104°45'38.092"W	polygon
BARCLAY 2N-27HZ BHL ON PLAT (460'FNL & 1805'FEL,REV-1)		7172.00	4349.73	62.31	3206628.86	1317346.14	40°12'07.726"N	104°45'36.875"W	point
BARCLAY 2N-27HZ BHL ON PLAT (460'FNL & 1805'FEL,REV-2)		7179.00	4349.73	62.31	3206628.86	1317346.14	40°12'07.726"N	104°45'36.875"W	point
BARCLAY 15-27 PAD HARDLINES (460' SETBACKS)		7417.00	0.32	-32.10	3206570.73	1312996.29	40°11'24.745"N	104°45'38.092"W	polygon

WELLPATH COMPOSITION - Ref Wellbore: BARCLAY 2N-27HZ AWP					Ref Wellpath: BARCLAY 2N-27HZ AWP	
Start MD [ft]	End MD [ft]	Positional Uncertainty Model	Log Name/Comment		Wellbore	
13.00	823.00	NaviTrak (Standard)	BHI MWD SURVEYS 13 1/2" HOLE <144-823>		BARCLAY 2N-27HZ AWP	
823.00	7519.00	NaviTrak (Standard)	BHI MWD SURVEYS 8 3/4" HOLE <883-7519>		BARCLAY 2N-27HZ AWP	
7519.00	11610.00	OnTrak (Standard)	BHI MWD SURVEYS 6 1/8" HOLE <7608-11610>		BARCLAY 2N-27HZ AWP	
11610.00	11680.00	Blind Drilling (std)	Projection to bit		BARCLAY 2N-27HZ AWP	



# Actual Wellpath Report

BARCLAY 2N-27HZ AWP

Page 6 of 6



REFERENCE WELLPATH IDENTIFICATION			
Operator	KERR-MCGEE OIL & GAS ONSHORE LP	Slot	SLOT#04 BARCLAY 2N-27HZ (477'FSL & 1871'FEL,SEC.27)
Area	COLORADO	Well	BARCLAY 2N-27HZ
Field	WELD COUNTY (KERR MCGEE)	Wellbore	BARCLAY 2N-27HZ AWP
Facility	SEC.27-T3N-R66W		

WELLPATH COMMENTS				
MD [ft]	Inclination [°]	Azimuth [°]	TVD [ft]	Comment
13.00	0.000	315.460	13.00	Tie-On
144.00	0.210	315.460	144.00	Begin BHI MWD Surveys
7570.00	87.848	359.075	7180.67	7" Casing Point
11610.00	88.180	0.070	7174.95	Last BHI MWD Survey
11680.00	88.180	0.070	7177.17	Projection to Bit