

# KERR-MCGEE OIL & GAS ONSHORE LP

Location: COLORADO Slot: SLOT#33 BARCLAY 29N-27HZ (714'FSL & 520'FWL, SEC.27)  
Field: WELD COUNTY (KERR MCGEE) Well: BARCLAY 29N-27HZ  
Facility: SEC.27-T3N-R66W Wellbore: BARCLAY 29N-27HZ PWB

Plot reference wellpath is BARCLAY 29N-27HZ (REV-8.0) PWP

True vertical depths are referenced to XTREME 8 (RKB)

Grid System: NAD83 / Lambert Colorado SP, Northern Zone (501), US feet

Measured depths are referenced to XTREME 8 (RKB)

North Reference: True north

XTREME 8 (RKB) to Mean Sea Level: 4981 feet

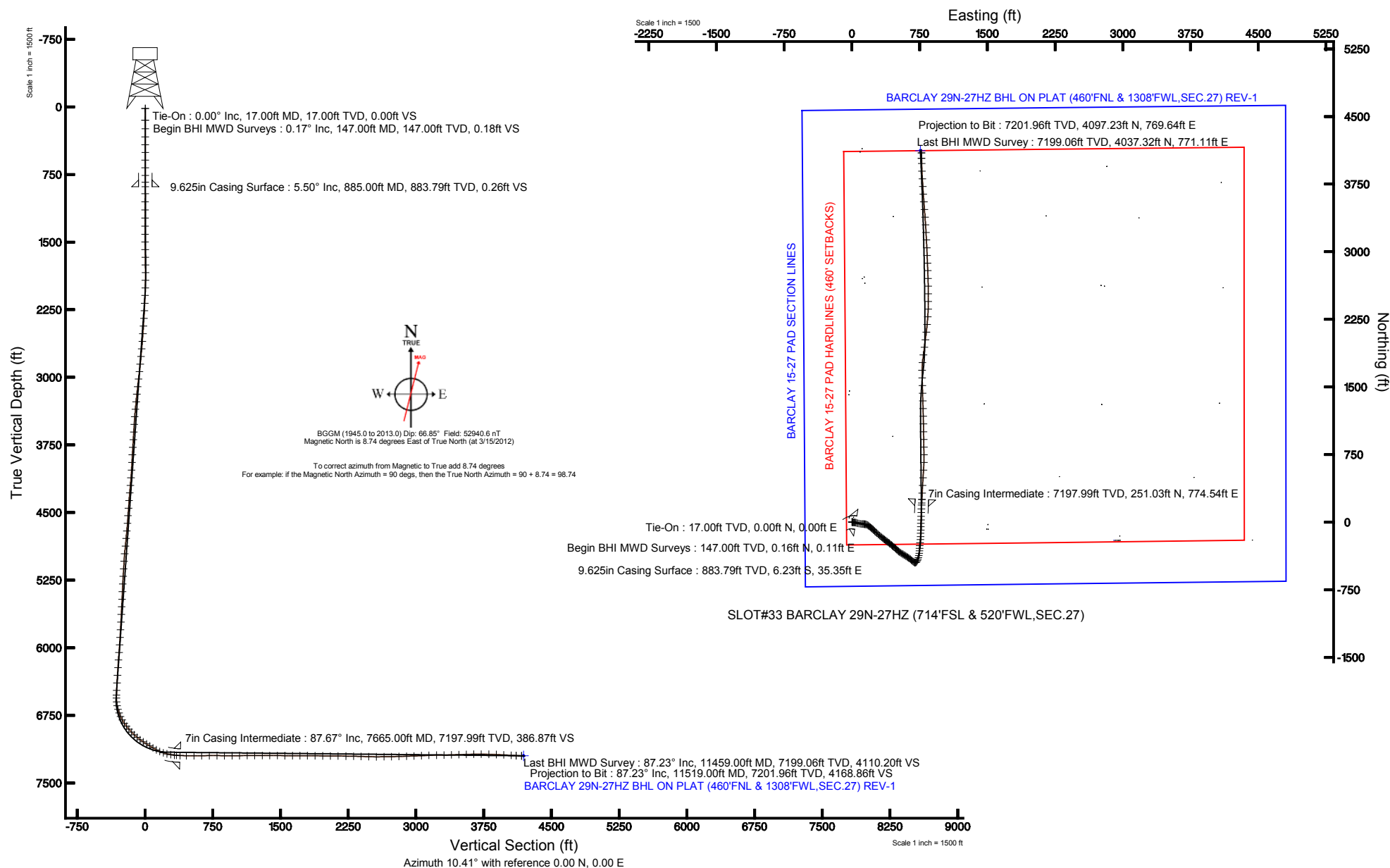
Scale: True distance

Mean Sea Level to Mud line (At Slot: SLOT#33 BARCLAY 29N-27HZ (714'FSL & 520'FWL, SEC.27)): 0 feet

Depths are in feet

Coordinates are in feet referenced to Slot

Created by: wilsjef02 on 3/29/2012





# Actual Wellpath Report

BARCLAY 29N-27HZ AWP

Page 1 of 6



## REFERENCE WELLPATH IDENTIFICATION

Operator	KERR-MCGEE OIL & GAS ONSHORE LP	Slot	SLOT#33 BARCLAY 29N-27HZ (714'FSL & 520'FWL,SEC.27)
Area	COLORADO	Well	BARCLAY 29N-27HZ
Field	WELD COUNTY (KERR MCGEE)	Wellbore	BARCLAY 29N-27HZ AWB
Facility	SEC.27-T3N-R66W		

## REPORT SETUP INFORMATION

Projection System	NAD83 / Lambert Colorado SP, Northern Zone (501), US feet	Software System	WellArchitect@ 3.0.2
North Reference	True	User	Wilsjef02
Scale	0.999957	Report Generated	3/29/2012 at 13:26:46
Convergence at slot	0.47° East	Database/Source file	WellArchitectDB/BARCLAY_29N-27HZ_AWB.xml

## WELLPATH LOCATION

	Local coordinates		Grid coordinates		Geographic coordinates	
	North[ft]	East[ft]	Easting[US ft]	Northing[US ft]	Latitude	Longitude
Slot Location	-4144.61	-111.44	3203664.28	1313174.79	40°11'26.747"N	104°46'15.524"W
Facility Reference Pt			3203741.63	1317320.00	40°12'07.704"N	104°46'14.088"W
Field Reference Pt			3197771.84	1268891.29	40°04'09.600"N	104°47'36.000"W

## WELLPATH DATUM

Calculation method	Minimum curvature	XTREME 8 (RKB) to Facility Vertical Datum	4981.00ft
Horizontal Reference Pt	Slot	XTREME 8 (RKB) to Mean Sea Level	4981.00ft
Vertical Reference Pt	XTREME 8 (RKB)	XTREME 8 (RKB) to Mud Line at Slot (SLOT#33 BARCLAY 29N-27HZ (714'FSL & 520'FWL,SEC.27))	4981.00ft
MD Reference Pt	XTREME 8 (RKB)	Section Origin	N 0.00, E 0.00 ft
Field Vertical Reference	Mean Sea Level	Section Azimuth	10.41°



# Actual Wellpath Report

BARCLAY 29N-27HZ AWP

Page 2 of 6



## REFERENCE WELLPATH IDENTIFICATION

Operator	KERR-MCGEE OIL & GAS ONSHORE LP	Slot	SLOT#33 BARCLAY 29N-27HZ (714'FSL & 520'FWL,SEC.27)
Area	COLORADO	Well	BARCLAY 29N-27HZ
Field	WELD COUNTY (KERR MCGEE)	Wellbore	BARCLAY 29N-27HZ AWB
Facility	SEC.27-T3N-R66W		

## WELLPATH DATA (150 stations) † = interpolated/extrapolated station

MD [ft]	Inclination [°]	Azimuth [°]	TVD [ft]	Vert Sect [ft]	North [ft]	East [ft]	Latitude	Longitude	DLS [°/100ft]	Comments
0.00†	0.000	35.050	0.00	0.00	0.00	0.00	40°11'26.747"N	104°46'15.524"W	0.00	
17.00	0.000	35.050	17.00	0.00	0.00	0.00	40°11'26.747"N	104°46'15.524"W	0.00	Tie-On
147.00	0.170	35.050	147.00	0.18	0.16	0.11	40°11'26.749"N	104°46'15.523"W	0.13	Begin BHI MWD Surveys
240.00	0.700	105.230	240.00	0.25	0.12	0.74	40°11'26.748"N	104°46'15.514"W	0.71	
332.00	0.990	102.670	331.99	0.17	-0.20	2.06	40°11'26.745"N	104°46'15.498"W	0.32	
420.00	1.640	98.560	419.96	0.19	-0.55	4.04	40°11'26.742"N	104°46'15.472"W	0.75	
505.00	2.730	101.450	504.90	0.19	-1.14	7.23	40°11'26.736"N	104°46'15.431"W	1.29	
590.00	3.640	99.880	589.77	0.18	-2.00	11.87	40°11'26.727"N	104°46'15.371"W	1.08	
675.00	4.130	101.010	674.57	0.17	-3.05	17.53	40°11'26.717"N	104°46'15.298"W	0.58	
761.00	5.240	97.880	760.28	0.31	-4.18	24.46	40°11'26.706"N	104°46'15.209"W	1.32	
836.00	4.910	101.960	834.99	0.37	-5.31	31.00	40°11'26.694"N	104°46'15.125"W	0.65	
963.00	6.440	101.610	961.36	0.08	-7.87	43.29	40°11'26.669"N	104°46'14.966"W	1.21	
1054.00	7.910	105.010	1051.65	-0.53	-10.52	54.34	40°11'26.643"N	104°46'14.824"W	1.68	
1145.00	8.260	102.840	1141.74	-1.31	-13.60	66.76	40°11'26.613"N	104°46'14.664"W	0.51	
1236.00	8.260	102.050	1231.80	-1.77	-16.41	79.53	40°11'26.585"N	104°46'14.499"W	0.12	
1327.00	8.400	100.710	1321.84	-1.99	-19.01	92.45	40°11'26.559"N	104°46'14.333"W	0.26	
1418.00	7.640	100.090	1411.95	-1.99	-21.31	104.94	40°11'26.536"N	104°46'14.172"W	0.84	
1504.00	6.570	92.740	1497.29	-1.31	-22.55	115.48	40°11'26.524"N	104°46'14.036"W	1.63	
1589.00	5.760	91.540	1581.80	0.00	-22.89	124.60	40°11'26.521"N	104°46'13.918"W	0.96	
1675.00	5.150	94.360	1667.41	1.07	-23.30	132.76	40°11'26.517"N	104°46'13.813"W	0.77	
1760.00	4.830	91.220	1752.09	2.05	-23.67	140.15	40°11'26.513"N	104°46'13.718"W	0.49	
1845.00	4.600	95.450	1836.80	2.91	-24.07	147.12	40°11'26.509"N	104°46'13.628"W	0.49	
1931.00	5.320	108.900	1922.48	2.62	-25.69	154.32	40°11'26.493"N	104°46'13.535"W	1.58	
2016.00	5.740	113.260	2007.08	1.10	-28.64	161.96	40°11'26.464"N	104°46'13.437"W	0.70	
2101.00	6.590	120.460	2091.59	-1.52	-32.79	170.06	40°11'26.423"N	104°46'13.333"W	1.35	
2187.00	6.750	123.930	2177.01	-5.23	-38.12	178.51	40°11'26.370"N	104°46'13.224"W	0.50	
2272.00	6.310	129.590	2261.46	-9.50	-43.88	186.26	40°11'26.313"N	104°46'13.124"W	0.92	
2358.00	7.420	127.170	2346.84	-14.30	-50.25	194.32	40°11'26.250"N	104°46'13.020"W	1.33	
2443.00	8.430	126.710	2431.03	-19.54	-57.29	203.69	40°11'26.181"N	104°46'12.899"W	1.19	
2528.00	8.190	128.640	2515.14	-25.16	-64.80	213.42	40°11'26.107"N	104°46'12.774"W	0.43	
2614.00	8.800	132.520	2600.19	-31.55	-73.07	223.05	40°11'26.025"N	104°46'12.650"W	0.97	
2699.00	9.640	136.890	2684.10	-39.24	-82.66	232.71	40°11'25.930"N	104°46'12.525"W	1.29	
2784.00	8.190	138.510	2768.07	-47.21	-92.39	241.58	40°11'25.834"N	104°46'12.411"W	1.73	
2870.00	9.880	135.950	2853.00	-55.28	-102.28	250.77	40°11'25.736"N	104°46'12.293"W	2.02	
2955.00	11.950	129.800	2936.46	-63.83	-113.16	262.60	40°11'25.629"N	104°46'12.140"W	2.79	
3040.00	13.220	131.630	3019.41	-73.19	-125.25	276.63	40°11'25.509"N	104°46'11.960"W	1.57	
3126.00	13.640	130.880	3103.06	-83.43	-138.42	291.65	40°11'25.379"N	104°46'11.766"W	0.53	
3211.00	11.160	129.740	3186.07	-92.54	-150.24	305.55	40°11'25.262"N	104°46'11.587"W	2.93	
3297.00	10.600	128.670	3270.53	-100.36	-160.50	318.13	40°11'25.161"N	104°46'11.425"W	0.69	
3382.00	10.430	132.000	3354.10	-108.10	-170.53	329.95	40°11'25.062"N	104°46'11.272"W	0.74	
3467.00	9.510	131.010	3437.82	-115.70	-180.29	340.97	40°11'24.965"N	104°46'11.131"W	1.10	
3553.00	7.930	127.730	3522.82	-122.04	-188.58	351.02	40°11'24.883"N	104°46'11.001"W	1.93	
3638.00	7.740	124.740	3607.03	-127.09	-195.43	360.36	40°11'24.816"N	104°46'10.881"W	0.53	
3723.00	7.620	127.790	3691.26	-132.04	-202.15	369.52	40°11'24.749"N	104°46'10.763"W	0.50	
3809.00	7.810	128.830	3776.49	-137.44	-209.30	378.57	40°11'24.679"N	104°46'10.646"W	0.27	
3894.00	7.380	125.090	3860.74	-142.47	-216.06	387.54	40°11'24.612"N	104°46'10.530"W	0.77	
3979.00	7.190	126.880	3945.05	-147.12	-222.39	396.26	40°11'24.549"N	104°46'10.418"W	0.35	
4065.00	7.690	123.930	4030.33	-151.81	-228.84	405.34	40°11'24.486"N	104°46'10.301"W	0.73	
4150.00	9.250	127.870	4114.40	-157.23	-236.20	415.45	40°11'24.413"N	104°46'10.171"W	1.96	
4236.00	10.210	129.620	4199.16	-164.14	-245.31	426.78	40°11'24.323"N	104°46'10.025"W	1.17	
4321.00	9.020	133.820	4282.97	-171.49	-254.73	437.39	40°11'24.230"N	104°46'09.888"W	1.62	
4406.00	7.760	136.310	4367.06	-178.52	-263.49	446.16	40°11'24.143"N	104°46'09.775"W	1.54	
4492.00	8.000	129.890	4452.25	-184.87	-271.53	454.77	40°11'24.064"N	104°46'09.664"W	1.06	
4577.00	8.660	125.060	4536.35	-190.45	-278.99	464.54	40°11'23.990"N	104°46'09.538"W	1.13	
4662.00	9.240	128.330	4620.32	-196.31	-286.90	475.14	40°11'23.912"N	104°46'09.402"W	0.91	
4748.00	10.000	130.850	4705.11	-203.33	-296.07	486.20	40°11'23.821"N	104°46'09.259"W	1.01	
4833.00	9.580	135.920	4788.87	-211.18	-305.98	496.70	40°11'23.723"N	104°46'09.124"W	1.13	
4918.00	9.040	138.890	4872.75	-219.44	-316.09	506.01	40°11'23.623"N	104°46'09.004"W	0.85	
5004.00	9.220	135.520	4957.66	-227.60	-326.10	515.28	40°11'23.524"N	104°46'08.884"W	0.66	
5089.00	9.700	122.420	5041.52	-234.21	-334.80	526.10	40°11'23.438"N	104°46'08.745"W	2.59	



# Actual Wellpath Report

BARCLAY 29N-27HZ AWP

Page 3 of 6



## REFERENCE WELLPATH IDENTIFICATION

Operator	KERR-MCGEE OIL & GAS ONSHORE LP	Slot	SLOT#33 BARCLAY 29N-27HZ (714'FSL & 520'FWL,SEC.27)
Area	COLORADO	Well	BARCLAY 29N-27HZ
Field	WELD COUNTY (KERR MCGEE)	Wellbore	BARCLAY 29N-27HZ AWB
Facility	SEC.27-T3N-R66W		

## WELLPATH DATA (150 stations) † = interpolated/extrapolated station

MD [ft]	Inclination [°]	Azimuth [°]	TVD [ft]	Vert Sect [ft]	North [ft]	East [ft]	Latitude	Longitude	DLS [°/100ft]	Comments
5174.00	9.690	120.800	5125.30	-239.38	-342.30	538.29	40°11'23.364"N	104°46'08.588"W	0.32	
5259.00	8.520	122.170	5209.23	-244.21	-349.31	549.77	40°11'23.295"N	104°46'08.440"W	1.40	
5345.00	7.000	122.220	5294.44	-248.52	-355.50	559.59	40°11'23.234"N	104°46'08.313"W	1.77	
5430.00	7.790	118.170	5378.73	-252.20	-360.98	569.05	40°11'23.180"N	104°46'08.192"W	1.11	
5515.00	8.130	120.300	5462.91	-256.00	-366.73	579.32	40°11'23.123"N	104°46'08.059"W	0.53	
5600.00	8.190	124.270	5547.05	-260.49	-373.17	589.51	40°11'23.059"N	104°46'07.928"W	0.67	
5686.00	7.260	121.050	5632.27	-264.89	-379.43	599.23	40°11'22.997"N	104°46'07.803"W	1.19	
5771.00	7.700	121.180	5716.55	-268.80	-385.14	608.70	40°11'22.941"N	104°46'07.681"W	0.52	
5856.00	8.180	126.380	5800.74	-273.46	-391.68	618.44	40°11'22.876"N	104°46'07.555"W	1.02	
5942.00	8.050	122.640	5885.87	-278.42	-398.56	628.44	40°11'22.808"N	104°46'07.426"W	0.63	
6027.00	8.480	128.110	5969.99	-283.59	-405.63	638.38	40°11'22.738"N	104°46'07.298"W	1.05	
6112.00	9.470	128.890	6053.95	-289.83	-413.89	648.76	40°11'22.657"N	104°46'07.165"W	1.17	
6197.00	7.250	133.300	6138.04	-296.08	-421.96	658.11	40°11'22.577"N	104°46'07.044"W	2.72	
6283.00	7.430	129.690	6223.34	-301.75	-429.24	666.33	40°11'22.505"N	104°46'06.938"W	0.58	
6368.00	7.730	129.020	6307.60	-307.17	-436.34	675.00	40°11'22.435"N	104°46'06.826"W	0.37	
6453.00	6.540	127.880	6391.94	-312.14	-442.92	683.27	40°11'22.370"N	104°46'06.720"W	1.41	
6536.00	5.770	122.390	6474.46	-315.88	-448.05	690.52	40°11'22.319"N	104°46'06.626"W	1.17	
6590.00	5.800	117.480	6528.18	-317.70	-450.77	695.23	40°11'22.292"N	104°46'06.566"W	0.92	
6621.00	6.420	98.970	6559.01	-318.12	-451.76	698.33	40°11'22.283"N	104°46'06.526"W	6.63	
6664.00	9.340	68.890	6601.62	-316.23	-450.88	703.97	40°11'22.291"N	104°46'06.453"W	11.53	
6707.00	12.990	52.110	6643.81	-310.80	-446.65	711.04	40°11'22.333"N	104°46'06.362"W	11.28	
6749.00	16.800	36.070	6684.41	-301.79	-438.84	718.35	40°11'22.410"N	104°46'06.268"W	13.29	
6792.00	19.830	22.440	6725.24	-289.05	-427.07	724.79	40°11'22.527"N	104°46'06.185"W	12.16	
6834.00	24.360	17.960	6764.15	-273.49	-412.23	730.19	40°11'22.673"N	104°46'06.115"W	11.50	
6877.00	29.150	15.260	6802.54	-254.25	-393.68	735.68	40°11'22.857"N	104°46'06.044"W	11.49	
6920.00	34.170	12.120	6839.13	-231.73	-371.76	740.98	40°11'23.073"N	104°46'05.976"W	12.28	
6962.00	37.860	5.960	6873.11	-207.07	-347.39	744.79	40°11'23.314"N	104°46'05.927"W	12.30	
7005.00	40.160	3.580	6906.52	-180.14	-320.42	747.03	40°11'23.580"N	104°46'05.898"W	6.38	
7047.00	44.270	3.790	6937.62	-152.12	-292.27	748.85	40°11'23.859"N	104°46'05.875"W	9.79	
7090.00	46.980	5.290	6967.69	-121.55	-261.63	751.29	40°11'24.161"N	104°46'05.843"W	6.78	
7133.00	50.290	5.720	6996.10	-89.40	-229.51	754.39	40°11'24.479"N	104°46'05.803"W	7.73	
7176.00	54.110	4.290	7022.45	-55.59	-195.67	757.34	40°11'24.813"N	104°46'05.765"W	9.26	
7218.00	57.290	2.810	7046.12	-21.14	-161.05	759.48	40°11'25.155"N	104°46'05.738"W	8.11	
7261.00	58.030	2.200	7069.12	14.84	-124.75	761.07	40°11'25.514"N	104°46'05.717"W	2.10	
7303.00	58.240	1.310	7091.29	50.10	-89.10	762.16	40°11'25.866"N	104°46'05.703"W	1.87	
7346.00	59.240	0.990	7113.61	86.38	-52.35	762.89	40°11'26.230"N	104°46'05.694"W	2.41	
7389.00	62.500	1.570	7134.54	123.46	-14.81	763.74	40°11'26.601"N	104°46'05.683"W	7.67	
7431.00	67.020	1.540	7152.44	160.99	23.16	764.77	40°11'26.976"N	104°46'05.670"W	10.76	
7474.00	71.930	2.060	7167.51	200.79	63.40	766.03	40°11'27.373"N	104°46'05.653"W	11.47	
7517.00	75.780	2.170	7179.47	241.66	104.67	767.56	40°11'27.781"N	104°46'05.634"W	8.96	
7559.00	80.310	2.700	7188.16	282.34	145.71	769.31	40°11'28.187"N	104°46'05.611"W	10.86	
7602.00	83.980	2.690	7194.04	324.54	188.25	771.31	40°11'28.607"N	104°46'05.585"W	8.53	
7624.00	86.420	3.010	7195.88	346.27	210.14	772.40	40°11'28.824"N	104°46'05.571"W	11.19	
7665.00†	87.672	2.980	7197.99	386.87	251.03	774.54	40°11'29.228"N	104°46'05.544"W	3.06	7" Casing Point
7734.00	89.780	2.930	7199.53	455.27	319.92	778.09	40°11'29.908"N	104°46'05.498"W	3.06	
7820.00	89.480	3.610	7200.08	540.60	405.78	783.00	40°11'30.757"N	104°46'05.434"W	0.86	
7905.00	90.520	3.610	7200.08	625.00	490.61	788.35	40°11'31.595"N	104°46'05.365"W	1.22	
7990.00	90.830	3.210	7199.08	709.36	575.45	793.41	40°11'32.433"N	104°46'05.300"W	0.60	
8076.00	89.260	1.280	7199.01	794.48	661.38	796.78	40°11'33.283"N	104°46'05.257"W	2.89	
8161.00	89.230	359.570	7200.13	878.18	746.37	797.41	40°11'34.122"N	104°46'05.249"W	2.01	
8247.00	90.370	358.980	7200.43	962.56	832.36	796.32	40°11'34.972"N	104°46'05.263"W	1.49	
8332.00	90.980	358.950	7199.43	1045.87	917.34	794.78	40°11'35.812"N	104°46'05.282"W	0.72	
8417.00	90.220	359.110	7198.54	1129.19	1002.32	793.34	40°11'36.652"N	104°46'05.301"W	0.91	
8503.00	90.860	358.670	7197.73	1213.45	1088.30	791.68	40°11'37.501"N	104°46'05.322"W	0.90	
8588.00	89.820	358.700	7197.23	1296.67	1173.27	789.73	40°11'38.341"N	104°46'05.347"W	1.22	
8673.00	89.110	358.210	7198.02	1379.83	1258.24	787.44	40°11'39.181"N	104°46'05.377"W	1.01	
8759.00	89.630	358.460	7198.97	1463.92	1344.20	784.94	40°11'40.030"N	104°46'05.409"W	0.67	
8844.00	89.780	358.620	7199.41	1547.10	1429.17	782.77	40°11'40.870"N	104°46'05.437"W	0.26	
8930.00	89.970	358.140	7199.59	1631.21	1515.13	780.34	40°11'41.719"N	104°46'05.468"W	0.60	
9015.00	90.180	358.440	7199.48	1714.31	1600.09	777.80	40°11'42.559"N	104°46'05.501"W	0.43	



# Actual Wellpath Report

BARCLAY 29N-27HZ AWP

Page 4 of 6



## REFERENCE WELLPATH IDENTIFICATION

Operator	KERR-MCGEE OIL & GAS ONSHORE LP	Slot	SLOT#33 BARCLAY 29N-27HZ (714'FSL & 520'FWL,SEC.27)
Area	COLORADO	Well	BARCLAY 29N-27HZ
Field	WELD COUNTY (KERR MCGEE)	Wellbore	BARCLAY 29N-27HZ AWB
Facility	SEC.27-T3N-R66W		

## WELLPATH DATA (150 stations)

MD [ft]	Inclination [°]	Azimuth [°]	TVD [ft]	Vert Sect [ft]	North [ft]	East [ft]	Latitude	Longitude	DLS [°/100ft]	Comments
9100.00	89.970	0.290	7199.37	1797.73	1685.08	776.86	40°11'43.399"N	104°46'05.513"W	2.19	
9185.00	89.320	5.320	7199.90	1881.96	1769.95	781.02	40°11'44.238"N	104°46'05.459"W	5.97	
9271.00	87.910	8.620	7201.98	1967.76	1855.28	791.45	40°11'45.081"N	104°46'05.325"W	4.17	
9356.00	89.720	7.420	7203.73	2052.67	1939.42	803.31	40°11'45.912"N	104°46'05.172"W	2.55	
9441.00	90.120	6.980	7203.85	2137.53	2023.75	813.96	40°11'46.746"N	104°46'05.035"W	0.70	
9527.00	89.230	6.160	7204.34	2223.34	2109.19	823.80	40°11'47.590"N	104°46'04.908"W	1.41	
9612.00	88.610	5.590	7205.94	2308.05	2193.72	832.50	40°11'48.425"N	104°46'04.796"W	0.99	
9697.00	88.030	3.980	7208.44	2392.60	2278.39	839.58	40°11'49.262"N	104°46'04.704"W	2.01	
9782.00	88.740	2.080	7210.83	2476.86	2363.23	844.08	40°11'50.100"N	104°46'04.647"W	2.39	
9868.00	89.850	0.450	7211.89	2561.76	2449.20	845.97	40°11'50.950"N	104°46'04.622"W	2.29	
9953.00	90.830	359.400	7211.38	2645.33	2534.20	845.86	40°11'51.790"N	104°46'04.623"W	1.69	
10038.00	90.920	358.920	7210.09	2728.69	2619.18	844.62	40°11'52.630"N	104°46'04.639"W	0.57	
10123.00	91.390	358.220	7208.37	2811.86	2704.13	842.50	40°11'53.469"N	104°46'04.667"W	0.99	
10209.00	91.880	357.920	7205.92	2895.84	2790.05	839.60	40°11'54.318"N	104°46'04.704"W	0.67	
10294.00	92.190	357.860	7202.90	2978.77	2874.94	836.47	40°11'55.157"N	104°46'04.744"W	0.37	
10379.00	92.620	357.630	7199.33	3061.63	2959.80	833.13	40°11'55.996"N	104°46'04.787"W	0.57	
10464.00	91.970	357.010	7195.93	3144.35	3044.63	829.16	40°11'56.834"N	104°46'04.838"W	1.06	
10550.00	90.500	356.880	7194.08	3227.96	3130.49	824.58	40°11'57.682"N	104°46'04.898"W	1.72	
10635.00	91.110	357.250	7192.88	3310.66	3215.37	820.23	40°11'58.521"N	104°46'04.954"W	0.84	
10720.00	91.600	356.190	7190.87	3393.22	3300.20	815.36	40°11'59.359"N	104°46'05.016"W	1.37	
10805.00	91.630	355.890	7188.48	3475.53	3384.97	809.50	40°12'00.197"N	104°46'05.092"W	0.35	
10891.00	92.060	355.420	7185.71	3558.64	3470.68	802.98	40°12'01.044"N	104°46'05.176"W	0.74	
10976.00	90.340	356.290	7183.93	3640.89	3555.43	796.84	40°12'01.882"N	104°46'05.255"W	2.27	
11061.00	89.940	355.590	7183.72	3723.20	3640.22	790.82	40°12'02.719"N	104°46'05.332"W	0.95	
11147.00	88.980	356.500	7184.53	3806.50	3726.01	784.89	40°12'03.567"N	104°46'05.409"W	1.54	
11232.00	87.880	356.860	7186.86	3889.04	3810.83	779.97	40°12'04.405"N	104°46'05.472"W	1.36	
11317.00	86.640	357.890	7190.92	3971.75	3895.64	776.08	40°12'05.244"N	104°46'05.522"W	1.90	
11402.00	86.550	357.810	7195.97	4054.57	3980.43	772.90	40°12'06.081"N	104°46'05.563"W	0.14	
11459.00	87.230	358.590	7199.06	4110.20	4037.32	771.11	40°12'06.644"N	104°46'05.586"W	1.81	Last BHI MWD Survey
11519.00	87.230	358.590	7201.96	4168.86	4097.23	769.64	40°12'07.236"N	104°46'05.605"W	0.00	Projection to Bit

## HOLE & CASING SECTIONS - Ref Wellbore: BARCLAY 29N-27HZ AWB Ref Wellpath: BARCLAY 29N-27HZ AWP

String/Diameter	Start MD [ft]	End MD [ft]	Interval [ft]	Start TVD [ft]	End TVD [ft]	Start N/S [ft]	Start E/W [ft]	End N/S [ft]	End E/W [ft]
13.5in Open Hole	17.00	885.00	868.00	17.00	883.79	0.00	0.00	-6.23	35.35
9.625in Casing Surface	17.00	885.00	868.00	17.00	883.79	0.00	0.00	-6.23	35.35
8.75in Open Hole	885.00	7670.00	6785.00	883.79	7198.19	-6.23	35.35	256.02	774.80
7in Casing Intermediate	17.00	7665.00	7648.00	17.00	7197.99	0.00	0.00	251.03	774.54
6.125in Open Hole	7665.00	11519.00	3854.00	7197.99	7201.96	251.03	774.54	4097.23	769.64



# Actual Wellpath Report

BARCLAY 29N-27HZ AWP

Page 5 of 6



## REFERENCE WELLPATH IDENTIFICATION

Operator	KERR-MCGEE OIL & GAS ONSHORE LP	Slot	SLOT#33 BARCLAY 29N-27HZ (714'FSL & 520'FWL,SEC.27)
Area	COLORADO	Well	BARCLAY 29N-27HZ
Field	WELD COUNTY (KERR MCGEE)	Wellbore	BARCLAY 29N-27HZ AWB
Facility	SEC.27-T3N-R66W		

## TARGETS

Name	MD [ft]	TVD [ft]	North [ft]	East [ft]	Grid East [US ft]	Grid North [US ft]	Latitude	Longitude	Shape
BARCLAY 15-27 PAD SECTION LINES		12.00	-202.40	2905.01	3206570.73	1312996.29	40°11'24.745"N	104°45'38.092"W	polygon
BARCLAY 29N-27HZ BHL ON PLAT (460'FNL & 1308'FWL,SEC.27) REV-1		7201.00	4122.77	757.54	3204387.88	1317303.46	40°12'07.488"N	104°46'05.761"W	point
BARCLAY 15-27 PAD HARDLINES (460' SETBACKS)		7429.00	-202.40	2905.01	3206570.73	1312996.29	40°11'24.745"N	104°45'38.092"W	polygon

## WELLPATH COMPOSITION - Ref Wellbore: BARCLAY 29N-27HZ AWB Ref Wellpath: BARCLAY 29N-27HZ AWP

Start MD [ft]	End MD [ft]	Positional Uncertainty Model	Log Name/Comment	Wellbore
17.00	836.00	NaviTrak (Standard)	BHI MWD SURVEYS 13 1/2" HOLE <147-836>	BARCLAY 29N-27HZ AWB
836.00	7624.00	NaviTrak (Standard)	BHI MWD SURVEYS 8 3/4" HOLE <963-7624>	BARCLAY 29N-27HZ AWB
7624.00	11459.00	OnTrak (Standard)	BHI MWD SURVEYS 6 1/8" HOLE <7734-11459>	BARCLAY 29N-27HZ AWB
11459.00	11519.00	Blind Drilling (std)	Projection to bit	BARCLAY 29N-27HZ AWB



# Actual Wellpath Report

BARCLAY 29N-27HZ AWP

Page 6 of 6



## REFERENCE WELLPATH IDENTIFICATION

Operator	KERR-MCGEE OIL & GAS ONSHORE LP	Slot	SLOT#33 BARCLAY 29N-27HZ (714'FSL & 520'FWL,SEC.27)
Area	COLORADO	Well	BARCLAY 29N-27HZ
Field	WELD COUNTY (KERR MCGEE)	Wellbore	BARCLAY 29N-27HZ AWB
Facility	SEC.27-T3N-R66W		

## WELLPATH COMMENTS

MD [ft]	Inclination [°]	Azimuth [°]	TVD [ft]	Comment
17.00	0.000	35.050	17.00	Tie-On
147.00	0.170	35.050	147.00	Begin BHI MWD Surveys
7665.00	87.672	2.980	7197.99	7" Casing Point
11459.00	87.230	358.590	7199.06	Last BHI MWD Survey
11519.00	87.230	358.590	7201.96	Projection to Bit