

KERR-MCGEE OIL & GAS ONSHORE LP

Location:	COLORADO	Slot:	SLOT#37 BARCLAY 4C-27HZ (714'FSL & 504'FWL,SEC27)
Field:	WELD COUNTY (KERR MCGEE)	Well:	BARCLAY 4C-27HZ
Facility:	SEC.27-T3N-R66W	Wellbore:	BARCLAY 4C-27HZ PWB

Plot reference wellpath is BARCLAY 4C-27HZ (REV-B.0) PWP

True vertical depths are referenced to XTREME 8 (RKB)

Measured depths are referenced to XTREME 8 (RKB)

XTREME 8 (RKR) to Mean Sea Level: 4981 feet

Mean Sea Level to Mud line (At Slot: SLOTH#37 BARCLAY 4C-27HZ (714'ESI & 504'EW) SEC27): 0 feet

Coordinates are in feet referenced to Slot

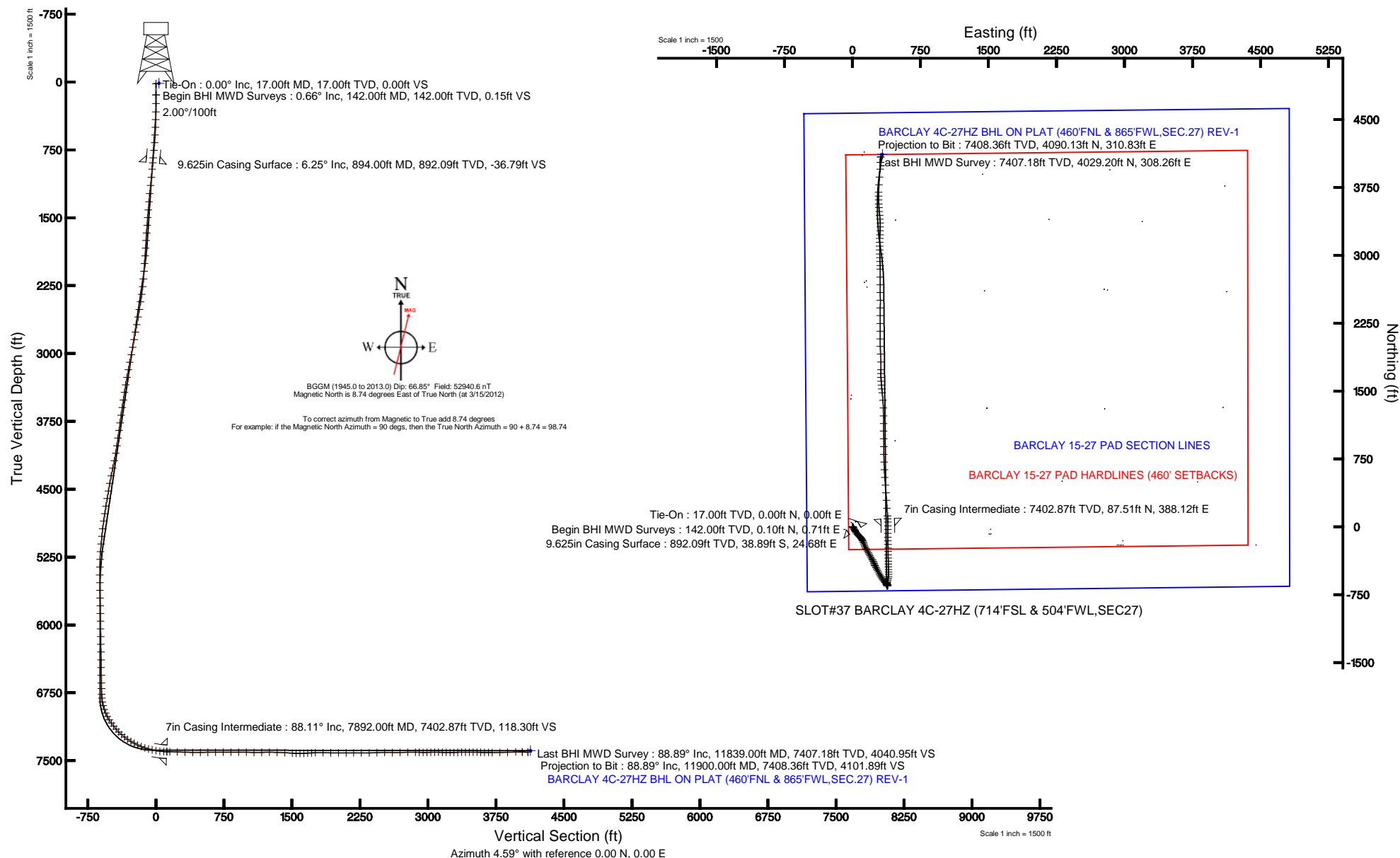
Grid System: NAD83 / Lambert Colorado SP, Northern Zone (501), US feet

North Reference: True north

Scale: True distance

Depths are in feet

Created by: wilsief02 on 4/19/2012





Actual Wellpath Report

BARCLAY 4C-27HZ AWP

Page 1 of 7



REFERENCE WELLPATH IDENTIFICATION			
Operator	KERR-MCGEE OIL & GAS ONSHORE LP	Slot	SLOT#37 BARCLAY 4C-27HZ (714'FSL & 504'FWL,SEC27)
Area	COLORADO	Well	BARCLAY 4C-27HZ
Field	WELD COUNTY (KERR MCGEE)	Wellbore	BARCLAY 4C-27HZ AWB
Facility	SEC.27-T3N-R66W		

REPORT SETUP INFORMATION			
Projection System	NAD83 / Lambert Colorado SP, Northern Zone (501), US feet	Software System	WellArchitect® 3.0.2
North Reference	True	User	Wilsjef02
Scale	0.999957	Report Generated	4/19/2012 at 13:53:27
Convergence at slot	0.47° East	Database/Source file	WellArchitectDB/BARCLAY_4C-27HZ_AWB.xml

WELLPATH LOCATION						
	Local coordinates		Grid coordinates		Geographic coordinates	
	North[ft]	East[ft]	Easting[US ft]	Northing[US ft]	Latitude	Longitude
Slot Location	-4144.31	-127.68	3203648.05	1313174.96	40°11'26.750"N	104°46'15.733"W
Facility Reference Pt			3203741.63	1317320.00	40°12'07.704"N	104°46'14.088"W
Field Reference Pt			3197771.84	1268891.29	40°04'09.600"N	104°47'36.000"W

WELLPATH DATUM			
Calculation method	Minimum curvature	XTREME 8 (RKB) to Facility Vertical Datum	4981.00ft
Horizontal Reference Pt	Slot	XTREME 8 (RKB) to Mean Sea Level	4981.00ft
Vertical Reference Pt	XTREME 8 (RKB)	XTREME 8 (RKB) to Mud Line at Slot (SLOT#37 BARCLAY 4C-27HZ (714'FSL & 504'FWL,SEC27))	4981.00ft
MD Reference Pt	XTREME 8 (RKB)	Section Origin	N 0.00, E 0.00 ft
Field Vertical Reference	Mean Sea Level	Section Azimuth	4.59°



Actual Wellpath Report

BARCLAY 4C-27HZ AWP

Page 2 of 7



REFERENCE WELLPATH IDENTIFICATION			
Operator	KERR-MCGEE OIL & GAS ONSHORE LP	Slot	SLOT#37 BARCLAY 4C-27HZ (714'FSL & 504'FWL,SEC27)
Area	COLORADO	Well	BARCLAY 4C-27HZ
Field	WELD COUNTY (KERR MCGEE)	Wellbore	BARCLAY 4C-27HZ AWB
Facility	SEC.27-T3N-R66W		

WELLPATH DATA (167 stations) † = interpolated/extrapolated station										
MD [ft]	Inclination [°]	Azimuth [°]	TVD [ft]	Vert Sect [ft]	North [ft]	East [ft]	Latitude	Longitude	DLS [°/100ft]	Comments
0.00†	0.000	82.290	0.00	0.00	0.00	0.00	40°11'26.750"N	104°46'15.733"W	0.00	
17.00	0.000	82.290	17.00	0.00	0.00	0.00	40°11'26.750"N	104°46'15.733"W	0.00	Tie-On
142.00	0.660	82.290	142.00	0.15	0.10	0.71	40°11'26.751"N	104°46'15.724"W	0.53	Begin BHI MWD Surveys
235.00	1.150	144.870	234.99	-0.45	-0.59	1.78	40°11'26.744"N	104°46'15.710"W	1.11	
328.00	1.690	145.880	327.96	-2.24	-2.49	3.09	40°11'26.725"N	104°46'15.693"W	0.58	
413.00	1.900	143.690	412.92	-4.28	-4.67	4.63	40°11'26.704"N	104°46'15.674"W	0.26	
498.00	2.720	145.900	497.85	-6.92	-7.47	6.59	40°11'26.676"N	104°46'15.648"W	0.97	
583.00	3.850	149.900	582.71	-10.84	-11.61	9.15	40°11'26.635"N	104°46'15.615"W	1.36	
669.00	5.580	148.340	668.41	-16.59	-17.67	12.79	40°11'26.575"N	104°46'15.568"W	2.02	
754.00	6.500	152.850	752.94	-24.01	-25.47	17.16	40°11'26.498"N	104°46'15.512"W	1.22	
839.00	6.220	149.470	837.42	-31.87	-33.71	21.69	40°11'26.417"N	104°46'15.454"W	0.55	
963.00	6.300	151.910	960.68	-43.09	-45.50	28.31	40°11'26.300"N	104°46'15.368"W	0.22	
1054.00	6.650	150.970	1051.10	-51.68	-54.51	33.22	40°11'26.211"N	104°46'15.305"W	0.40	
1145.00	6.910	151.820	1141.46	-60.67	-63.95	38.36	40°11'26.118"N	104°46'15.239"W	0.31	
1236.00	7.500	145.800	1231.74	-69.90	-73.68	44.28	40°11'26.022"N	104°46'15.163"W	1.05	
1327.00	7.520	133.860	1321.97	-78.30	-82.72	51.92	40°11'25.933"N	104°46'15.064"W	1.71	
1418.00	8.110	132.720	1412.12	-86.03	-91.20	60.93	40°11'25.849"N	104°46'14.948"W	0.67	
1503.00	7.050	129.810	1496.38	-92.74	-98.61	69.34	40°11'25.776"N	104°46'14.840"W	1.33	
1589.00	6.060	136.160	1581.82	-98.80	-105.26	76.54	40°11'25.710"N	104°46'14.747"W	1.43	
1674.00	5.580	139.710	1666.38	-104.70	-111.65	82.32	40°11'25.647"N	104°46'14.673"W	0.71	
1759.00	5.160	140.640	1751.00	-110.38	-117.76	87.41	40°11'25.586"N	104°46'14.607"W	0.50	
1844.00	4.990	139.490	1835.67	-115.75	-123.53	92.24	40°11'25.529"N	104°46'14.545"W	0.23	
1930.00	5.010	146.910	1921.35	-121.36	-129.52	96.72	40°11'25.470"N	104°46'14.487"W	0.75	
2015.00	4.660	155.960	2006.04	-127.33	-135.78	100.15	40°11'25.408"N	104°46'14.443"W	0.99	
2100.00	4.620	153.360	2090.77	-133.28	-141.99	103.09	40°11'25.347"N	104°46'14.405"W	0.25	
2185.00	5.380	145.680	2175.44	-139.31	-148.34	106.87	40°11'25.284"N	104°46'14.356"W	1.19	
2270.00	7.220	152.410	2259.93	-146.93	-156.37	111.59	40°11'25.205"N	104°46'14.295"W	2.33	
2356.00	9.050	157.940	2345.06	-157.55	-167.43	116.64	40°11'25.095"N	104°46'14.230"W	2.31	
2441.00	10.510	158.790	2428.82	-170.51	-180.85	121.95	40°11'24.963"N	104°46'14.162"W	1.73	
2526.00	10.530	157.220	2512.39	-184.39	-195.24	127.77	40°11'24.821"N	104°46'14.087"W	0.34	
2612.00	10.840	160.750	2596.90	-198.76	-210.12	133.48	40°11'24.674"N	104°46'14.013"W	0.84	
2697.00	11.210	157.890	2680.33	-213.45	-225.32	139.22	40°11'24.523"N	104°46'13.939"W	0.78	
2782.00	11.180	151.330	2763.72	-227.73	-240.21	146.28	40°11'24.376"N	104°46'13.848"W	1.50	
2867.00	12.470	149.640	2846.91	-242.14	-255.36	154.88	40°11'24.227"N	104°46'13.738"W	1.57	
2953.00	13.140	149.260	2930.78	-257.72	-271.77	164.57	40°11'24.064"N	104°46'13.613"W	0.79	
3038.00	13.310	149.530	3013.52	-273.61	-288.51	174.47	40°11'23.899"N	104°46'13.485"W	0.21	
3123.00	13.490	151.220	3096.21	-289.90	-305.63	184.20	40°11'23.730"N	104°46'13.360"W	0.51	
3208.00	12.000	152.720	3179.11	-305.69	-322.17	193.02	40°11'23.566"N	104°46'13.246"W	1.80	
3294.00	11.720	151.320	3263.28	-320.58	-337.78	201.31	40°11'23.412"N	104°46'13.139"W	0.47	
3379.00	11.540	148.810	3346.53	-334.70	-352.63	209.86	40°11'23.265"N	104°46'13.029"W	0.63	
3464.00	11.180	146.890	3429.87	-348.11	-366.81	218.76	40°11'23.125"N	104°46'12.914"W	0.61	
3549.00	9.940	151.560	3513.43	-360.79	-380.16	226.76	40°11'22.993"N	104°46'12.811"W	1.77	
3635.00	9.340	159.440	3598.22	-373.33	-393.22	232.75	40°11'22.864"N	104°46'12.734"W	1.68	
3720.00	8.440	162.560	3682.19	-385.35	-405.63	237.04	40°11'22.742"N	104°46'12.679"W	1.20	
3805.00	8.690	159.270	3766.25	-396.94	-417.59	241.18	40°11'22.623"N	104°46'12.626"W	0.65	



Actual Wellpath Report

BARCLAY 4C-27HZ AWP

Page 3 of 7



REFERENCE WELLPATH IDENTIFICATION			
Operator	KERR-MCGEE OIL & GAS ONSHORE LP	Slot	SLOT#37 BARCLAY 4C-27HZ (714'FSL & 504'FWL,SEC27)
Area	COLORADO	Well	BARCLAY 4C-27HZ
Field	WELD COUNTY (KERR MCGEE)	Wellbore	BARCLAY 4C-27HZ AWB
Facility	SEC.27-T3N-R66W		

WELLPATH DATA (167 stations)										
MD [ft]	Inclination [°]	Azimuth [°]	TVD [ft]	Vert Sect [ft]	North [ft]	East [ft]	Latitude	Longitude	DLS [°/100ft]	Comments
3891.00	8.810	151.480	3851.25	-408.33	-429.45	246.62	40°11'22.506"N	104°46'12.555"W	1.38	
3976.00	9.520	152.700	3935.16	-419.75	-441.42	252.96	40°11'22.388"N	104°46'12.474"W	0.87	
4062.00	9.750	152.410	4019.95	-431.95	-454.19	259.59	40°11'22.262"N	104°46'12.388"W	0.27	
4147.00	11.820	153.360	4103.44	-445.49	-468.35	266.83	40°11'22.122"N	104°46'12.295"W	2.44	
4232.00	13.400	150.240	4186.39	-461.06	-484.69	275.62	40°11'21.960"N	104°46'12.182"W	2.02	
4317.00	14.550	150.460	4268.87	-478.03	-502.53	285.77	40°11'21.784"N	104°46'12.051"W	1.35	
4403.00	12.740	153.110	4352.44	-495.06	-520.38	295.39	40°11'21.608"N	104°46'11.927"W	2.23	
4488.00	11.760	153.320	4435.51	-510.46	-536.48	303.52	40°11'21.448"N	104°46'11.822"W	1.15	
4574.00	11.520	151.400	4519.74	-525.14	-551.85	311.56	40°11'21.297"N	104°46'11.719"W	0.53	
4659.00	11.420	147.370	4603.04	-538.94	-566.39	320.17	40°11'21.153"N	104°46'11.608"W	0.95	
4745.00	11.940	144.090	4687.26	-552.49	-580.77	329.97	40°11'21.011"N	104°46'11.481"W	0.98	
4830.00	11.980	143.600	4770.42	-565.83	-594.99	340.37	40°11'20.870"N	104°46'11.347"W	0.13	
4915.00	10.290	143.170	4853.82	-578.18	-608.17	350.15	40°11'20.740"N	104°46'11.221"W	1.99	
5001.00	9.660	140.340	4938.52	-589.11	-619.87	359.36	40°11'20.624"N	104°46'11.103"W	0.93	
5086.00	7.440	143.990	5022.57	-598.40	-629.81	367.15	40°11'20.526"N	104°46'11.002"W	2.69	
5171.00	6.170	147.890	5106.97	-606.24	-638.14	372.81	40°11'20.444"N	104°46'10.929"W	1.59	
5257.00	4.880	149.260	5192.56	-612.93	-645.19	377.14	40°11'20.374"N	104°46'10.874"W	1.51	
5342.00	2.990	158.270	5277.36	-617.87	-650.36	379.81	40°11'20.323"N	104°46'10.839"W	2.33	
5427.00	1.860	130.810	5362.29	-620.67	-653.32	381.67	40°11'20.294"N	104°46'10.815"W	1.87	
5513.00	1.370	91.770	5448.25	-621.44	-654.27	383.76	40°11'20.285"N	104°46'10.788"W	1.36	
5598.00	1.130	52.890	5533.24	-620.84	-653.79	385.44	40°11'20.289"N	104°46'10.767"W	1.01	
5684.00	1.220	32.290	5619.22	-619.46	-652.51	386.61	40°11'20.302"N	104°46'10.752"W	0.50	
5769.00	1.360	8.070	5704.20	-617.65	-650.74	387.23	40°11'20.319"N	104°46'10.744"W	0.66	
5854.00	1.210	356.330	5789.18	-615.76	-648.85	387.32	40°11'20.338"N	104°46'10.743"W	0.36	
5940.00	1.010	353.120	5875.16	-614.12	-647.19	387.17	40°11'20.354"N	104°46'10.744"W	0.24	
6025.00	0.880	341.350	5960.15	-612.78	-645.83	386.87	40°11'20.368"N	104°46'10.748"W	0.27	
6110.00	0.730	316.630	6045.14	-611.82	-644.82	386.29	40°11'20.378"N	104°46'10.756"W	0.44	
6196.00	1.330	307.370	6131.13	-610.91	-643.81	385.12	40°11'20.388"N	104°46'10.771"W	0.72	
6281.00	1.420	316.700	6216.10	-609.67	-642.45	383.61	40°11'20.401"N	104°46'10.790"W	0.28	
6366.00	1.470	324.630	6301.07	-608.13	-640.79	382.26	40°11'20.418"N	104°46'10.808"W	0.24	
6452.00	1.470	328.490	6387.05	-606.39	-638.95	381.05	40°11'20.436"N	104°46'10.823"W	0.12	
6537.00	0.670	346.020	6472.03	-605.04	-637.54	380.36	40°11'20.450"N	104°46'10.832"W	1.01	
6623.00	0.870	338.860	6558.02	-603.98	-636.44	380.00	40°11'20.461"N	104°46'10.837"W	0.26	
6708.00	0.950	332.320	6643.01	-602.80	-635.22	379.44	40°11'20.473"N	104°46'10.844"W	0.15	
6772.00	1.120	336.110	6707.00	-601.80	-634.17	378.94	40°11'20.483"N	104°46'10.850"W	0.29	
6834.00	2.260	348.700	6768.97	-600.09	-632.42	378.45	40°11'20.500"N	104°46'10.857"W	1.92	
6876.00	4.740	9.040	6810.89	-597.57	-629.90	378.56	40°11'20.525"N	104°46'10.855"W	6.51	
6919.00	9.980	12.200	6853.52	-592.10	-624.49	379.63	40°11'20.579"N	104°46'10.842"W	12.22	
6961.00	14.570	13.730	6894.55	-583.27	-615.80	381.66	40°11'20.665"N	104°46'10.815"W	10.96	
7004.00	19.340	17.060	6935.67	-570.97	-603.73	385.03	40°11'20.784"N	104°46'10.772"W	11.32	
7047.00	22.830	14.150	6975.79	-555.79	-588.83	389.16	40°11'20.931"N	104°46'10.719"W	8.47	
7089.00	27.700	11.120	7013.76	-538.04	-571.34	393.04	40°11'21.104"N	104°46'10.669"W	11.99	
7132.00	31.660	5.820	7051.12	-516.82	-550.30	396.11	40°11'21.312"N	104°46'10.629"W	11.04	
7175.00	36.150	1.530	7086.80	-492.86	-526.38	397.59	40°11'21.548"N	104°46'10.610"W	11.83	
7217.00	38.950	358.640	7120.10	-467.35	-500.79	397.61	40°11'21.801"N	104°46'10.610"W	7.87	



Actual Wellpath Report

BARCLAY 4C-27HZ AWP

Page 4 of 7



REFERENCE WELLPATH IDENTIFICATION

Operator	KERR-MCGEE OIL & GAS ONSHORE LP	Slot	SLOT#37 BARCLAY 4C-27HZ (714'FSL & 504'FWL,SEC27)
Area	COLORADO	Well	BARCLAY 4C-27HZ
Field	WELD COUNTY (KERR MCGEE)	Wellbore	BARCLAY 4C-27HZ AWB
Facility	SEC.27-T3N-R66W		

WELLPATH DATA (167 stations) † = interpolated/extrapolated station

MD [ft]	Inclination [°]	Azimuth [°]	TVD [ft]	Vert Sect [ft]	North [ft]	East [ft]	Latitude	Longitude	DLS [°/100ft]	Comments
7260.00	39.890	357.770	7153.32	-440.21	-473.50	396.75	40°11'22.071"N	104°46'10.621"W	2.54	
7303.00	43.860	357.840	7185.33	-411.72	-444.82	395.66	40°11'22.354"N	104°46'10.635"W	9.23	
7345.00	48.490	358.790	7214.41	-381.61	-414.54	394.77	40°11'22.653"N	104°46'10.646"W	11.14	
7388.00	52.930	359.340	7241.63	-348.49	-381.27	394.24	40°11'22.982"N	104°46'10.653"W	10.37	
7430.00	55.830	359.050	7266.09	-314.50	-347.14	393.76	40°11'23.320"N	104°46'10.660"W	6.93	
7473.00	59.110	359.190	7289.21	-278.42	-310.90	393.20	40°11'23.678"N	104°46'10.667"W	7.63	
7516.00	62.850	358.930	7310.06	-241.00	-273.31	392.58	40°11'24.049"N	104°46'10.675"W	8.71	
7558.00	64.970	358.770	7328.53	-203.47	-235.59	391.82	40°11'24.422"N	104°46'10.684"W	5.06	
7601.00	67.440	359.260	7345.88	-164.31	-196.26	391.15	40°11'24.811"N	104°46'10.693"W	5.84	
7644.00	71.380	359.110	7361.00	-124.25	-156.02	390.58	40°11'25.208"N	104°46'10.700"W	9.17	
7686.00	75.330	359.700	7373.03	-84.18	-115.79	390.16	40°11'25.606"N	104°46'10.706"W	9.50	
7729.00	78.070	359.720	7382.92	-42.49	-73.95	389.95	40°11'26.019"N	104°46'10.709"W	6.37	
7772.00	79.540	0.480	7391.27	-0.44	-31.77	390.02	40°11'26.436"N	104°46'10.708"W	3.83	
7814.00	83.190	359.970	7397.57	40.96	9.75	390.19	40°11'26.846"N	104°46'10.705"W	8.77	
7857.00	86.820	358.160	7401.32	83.59	52.57	389.48	40°11'27.269"N	104°46'10.714"W	9.43	
7892.00†	88.107	357.367	7402.87	118.30	87.51	388.12	40°11'27.615"N	104°46'10.732"W	4.32	7" Casing Point
7925.00	89.320	356.620	7403.61	151.00	120.46	386.39	40°11'27.940"N	104°46'10.754"W	4.32	
8010.00	87.900	355.980	7405.67	235.09	205.25	380.91	40°11'28.778"N	104°46'10.825"W	1.83	
8096.00	87.810	356.320	7408.89	320.10	291.00	375.14	40°11'29.626"N	104°46'10.899"W	0.41	
8181.00	89.630	355.490	7410.79	404.10	375.75	369.07	40°11'30.463"N	104°46'10.977"W	2.35	
8266.00	90.250	354.600	7410.88	487.92	460.44	361.73	40°11'31.300"N	104°46'11.072"W	1.28	
8351.00	90.770	357.160	7410.12	571.93	545.21	355.62	40°11'32.138"N	104°46'11.151"W	3.07	
8436.00	90.650	356.800	7409.07	656.17	630.08	351.14	40°11'32.976"N	104°46'11.208"W	0.45	
8522.00	90.120	358.980	7408.49	741.57	716.01	347.98	40°11'33.826"N	104°46'11.249"W	2.61	
8607.00	89.940	358.180	7408.44	826.11	800.99	345.87	40°11'34.665"N	104°46'11.276"W	0.96	
8692.00	89.600	0.230	7408.78	910.73	885.97	344.69	40°11'35.505"N	104°46'11.292"W	2.44	
8778.00	88.980	358.830	7409.85	996.38	971.96	343.98	40°11'36.355"N	104°46'11.301"W	1.78	
8863.00	89.880	0.350	7410.70	1081.05	1056.95	343.38	40°11'37.195"N	104°46'11.308"W	2.08	
8948.00	90.520	359.470	7410.40	1165.76	1141.95	343.24	40°11'38.035"N	104°46'11.310"W	1.28	
9033.00	90.150	358.870	7409.90	1250.38	1226.94	342.01	40°11'38.875"N	104°46'11.326"W	0.83	
9119.00	88.740	358.010	7410.74	1335.88	1312.90	339.67	40°11'39.724"N	104°46'11.356"W	1.92	
9204.00	86.730	355.370	7414.10	1420.00	1397.68	334.77	40°11'40.562"N	104°46'11.419"W	3.90	
9289.00	85.870	354.750	7419.58	1503.65	1482.19	327.47	40°11'41.397"N	104°46'11.513"W	1.25	
9332.00	87.990	355.230	7421.88	1545.98	1524.96	323.72	40°11'41.820"N	104°46'11.562"W	5.05	
9374.00	91.690	355.610	7422.00	1587.44	1566.82	320.36	40°11'42.233"N	104°46'11.605"W	8.86	
9417.00	92.420	354.430	7420.46	1629.81	1609.63	316.63	40°11'42.656"N	104°46'11.653"W	3.23	
9460.00	92.770	357.750	7418.51	1672.29	1652.48	313.70	40°11'43.080"N	104°46'11.691"W	7.76	
9502.00	92.740	0.290	7416.49	1714.04	1694.42	312.99	40°11'43.494"N	104°46'11.700"W	6.04	
9545.00	92.670	0.580	7414.46	1756.88	1737.37	313.31	40°11'43.919"N	104°46'11.696"W	0.69	
9630.00	88.700	358.530	7413.45	1841.52	1822.34	312.65	40°11'44.758"N	104°46'11.704"W	5.26	
9716.00	88.390	357.480	7415.63	1926.92	1908.26	309.66	40°11'45.607"N	104°46'11.743"W	1.27	
9801.00	90.030	358.020	7416.80	2011.31	1993.18	306.32	40°11'46.447"N	104°46'11.786"W	2.03	
9886.00	90.210	0.680	7416.62	2095.94	2078.17	305.36	40°11'47.286"N	104°46'11.798"W	3.14	
9971.00	90.740	0.430	7415.92	2180.73	2163.16	306.18	40°11'48.126"N	104°46'11.788"W	0.69	
10056.00	89.200	358.820	7415.96	2265.40	2248.15	305.63	40°11'48.966"N	104°46'11.795"W	2.62	



Actual Wellpath Report

BARCLAY 4C-27HZ AWP

Page 5 of 7



REFERENCE WELLPATH IDENTIFICATION			
Operator	KERR-MCGEE OIL & GAS ONSHORE LP	Slot	SLOT#37 BARCLAY 4C-27HZ (714'FSL & 504'FWL,SEC27)
Area	COLORADO	Well	BARCLAY 4C-27HZ
Field	WELD COUNTY (KERR MCGEE)	Wellbore	BARCLAY 4C-27HZ AWB
Facility	SEC.27-T3N-R66W		

WELLPATH DATA (167 stations)										
MD [ft]	Inclination [°]	Azimuth [°]	TVD [ft]	Vert Sect [ft]	North [ft]	East [ft]	Latitude	Longitude	DLS [°/100ft]	Comments
10142.00	90.830	0.040	7415.94	2351.05	2334.14	304.77	40°11'49.816"N	104°46'11.806"W	2.37	
10229.00	92.930	1.580	7413.09	2437.81	2421.08	306.00	40°11'50.675"N	104°46'11.790"W	2.99	
10314.00	89.260	359.240	7411.46	2522.55	2506.04	306.60	40°11'51.515"N	104°46'11.782"W	5.12	
10399.00	88.980	359.910	7412.77	2607.21	2591.03	305.97	40°11'52.355"N	104°46'11.790"W	0.85	
10484.00	91.450	359.180	7412.45	2691.87	2676.02	305.30	40°11'53.194"N	104°46'11.799"W	3.03	
10569.00	92.250	1.010	7409.71	2776.56	2760.97	305.44	40°11'54.034"N	104°46'11.797"W	2.35	
10655.00	88.770	359.150	7408.94	2862.28	2846.95	305.56	40°11'54.884"N	104°46'11.795"W	4.59	
10697.00	87.990	358.560	7410.13	2904.05	2888.93	304.72	40°11'55.298"N	104°46'11.806"W	2.33	
10740.00	89.540	358.090	7411.05	2946.78	2931.90	303.46	40°11'55.723"N	104°46'11.822"W	3.77	
10783.00	90.890	358.190	7410.89	2989.51	2974.87	302.07	40°11'56.148"N	104°46'11.840"W	3.15	
10825.00	91.640	359.580	7409.97	3031.29	3016.85	301.25	40°11'56.562"N	104°46'11.851"W	3.76	
10868.00	90.180	357.400	7409.28	3074.03	3059.83	300.12	40°11'56.987"N	104°46'11.866"W	6.10	
10911.00	88.800	359.730	7409.67	3116.79	3102.81	299.04	40°11'57.412"N	104°46'11.879"W	6.30	
10953.00	89.010	1.630	7410.47	3158.68	3144.80	299.54	40°11'57.827"N	104°46'11.873"W	4.55	
10996.00	89.010	3.010	7411.21	3201.64	3187.75	301.28	40°11'58.251"N	104°46'11.851"W	3.21	
11038.00	90.610	3.360	7411.35	3243.63	3229.69	303.61	40°11'58.666"N	104°46'11.820"W	3.90	
11081.00	90.770	1.760	7410.83	3286.60	3272.64	305.53	40°11'59.090"N	104°46'11.796"W	3.74	
11124.00	90.640	359.440	7410.30	3329.48	3315.63	305.98	40°11'59.515"N	104°46'11.790"W	5.40	
11166.00	90.460	357.260	7409.90	3371.23	3357.61	304.78	40°11'59.930"N	104°46'11.805"W	5.21	
11209.00	91.260	356.000	7409.25	3413.81	3400.53	302.25	40°12'00.354"N	104°46'11.838"W	3.47	
11252.00	90.400	355.520	7408.63	3456.30	3443.41	299.07	40°12'00.778"N	104°46'11.879"W	2.29	
11294.00	89.170	353.790	7408.79	3497.66	3485.22	295.16	40°12'01.191"N	104°46'11.929"W	5.05	
11337.00	88.760	356.240	7409.57	3540.05	3528.05	291.42	40°12'01.614"N	104°46'11.978"W	5.78	
11379.00	88.890	357.630	7410.43	3581.67	3569.98	289.18	40°12'02.028"N	104°46'12.006"W	3.32	
11422.00	89.010	358.960	7411.22	3624.40	3612.95	287.90	40°12'02.453"N	104°46'12.023"W	3.11	
11465.00	88.680	359.750	7412.08	3667.21	3655.94	287.41	40°12'02.878"N	104°46'12.029"W	1.99	
11507.00	89.350	2.290	7412.80	3709.12	3697.92	288.16	40°12'03.293"N	104°46'12.020"W	6.25	
11592.00	91.110	3.070	7412.46	3794.07	3782.82	292.13	40°12'04.132"N	104°46'11.968"W	2.26	
11677.00	92.130	4.710	7410.06	3879.03	3867.59	297.90	40°12'04.969"N	104°46'11.894"W	2.27	
11765.00	91.390	3.670	7407.36	3966.98	3955.31	304.32	40°12'05.836"N	104°46'11.811"W	1.45	
11839.00	88.890	2.420	7407.18	4040.95	4029.20	308.26	40°12'06.566"N	104°46'11.761"W	3.78	Last BHI MWD Survey
11900.00	88.890	2.420	7408.36	4101.89	4090.13	310.83	40°12'07.169"N	104°46'11.727"W	0.00	Projection to Bit



Actual Wellpath Report

BARCLAY 4C-27HZ AWP

Page 6 of 7



REFERENCE WELLPATH IDENTIFICATION			
Operator	KERR-MCGEE OIL & GAS ONSHORE LP	Slot	SLOT#37 BARCLAY 4C-27HZ (714'FSL & 504'FWL,SEC27)
Area	COLORADO	Well	BARCLAY 4C-27HZ
Field	WELD COUNTY (KERR MCGEE)	Wellbore	BARCLAY 4C-27HZ AWB
Facility	SEC.27-T3N-R66W		

HOLE & CASING SECTIONS - Ref Wellbore: BARCLAY 4C-27HZ AWB Ref Wellpath: BARCLAY 4C-27HZ AWP									
String/Diameter	Start MD [ft]	End MD [ft]	Interval [ft]	Start TVD [ft]	End TVD [ft]	Start N/S [ft]	Start E/W [ft]	End N/S [ft]	End E/W [ft]
13.5in Open Hole	17.00	894.00	877.00	17.00	892.09	0.00	0.00	-38.89	24.68
9.625in Casing Surface	17.00	894.00	877.00	17.00	892.09	0.00	0.00	-38.89	24.68
8.75in Open Hole	894.00	7912.00	7018.00	892.09	7403.40	-38.89	24.68	107.48	387.12
7in Casing Intermediate	17.00	7892.00	7875.00	17.00	7402.87	0.00	0.00	87.51	388.12
6.125in Open Hole	7892.00	11900.00	4008.00	7402.87	7408.36	87.51	388.12	4090.13	310.83

TARGETS									
Name	MD [ft]	TVD [ft]	North [ft]	East [ft]	Grid East [US ft]	Grid North [US ft]	Latitude	Longitude	Shape
BARCLAY 15-27 PAD SECTION LINES		12.00	-202.70	2921.25	3206570.73	1312996.29	40°11'24.745"N	104°45'38.092"W	polygon
BARCLAY 4C-27HZ BHL ON PLAT (460'FNL & 865'FWL,SEC.27) REV-1		7391.00	4117.70	330.72	3203944.89	1317295.06	40°12'07.441"N	104°46'11.471"W	point
BARCLAY 15-27 PAD HARDLINES (460' SETBACKS)		7429.00	-202.70	2921.25	3206570.73	1312996.29	40°11'24.745"N	104°45'38.092"W	polygon

WELLPATH COMPOSITION - Ref Wellbore: BARCLAY 4C-27HZ AWB Ref Wellpath: BARCLAY 4C-27HZ AWP				
Start MD [ft]	End MD [ft]	Positional Uncertainty Model	Log Name/Comment	Wellbore
17.00	839.00	NaviTrak (Standard)	BHI MWD SURVEYS 13 1/2" HOLE <142-839>	BARCLAY 4C-27HZ AWB
839.00	7857.00	NaviTrak (Standard)	BHI MWD SURVEYS 8 3/4" HOLE <963-7857>	BARCLAY 4C-27HZ AWB
7857.00	11839.00	OnTrak (Standard)	BHI MWD SURVEYS 6 1/8" HOLE <7925-11839>	BARCLAY 4C-27HZ AWB
11839.00	11900.00	Blind Drilling (std)	Projection to bit	BARCLAY 4C-27HZ AWB



Actual Wellpath Report

BARCLAY 4C-27HZ AWP

Page 7 of 7



REFERENCE WELLPATH IDENTIFICATION			
Operator	KERR-MCGEE OIL & GAS ONSHORE LP	Slot	SLOT#37 BARCLAY 4C-27HZ (714'FSL & 504'FWL,SEC27)
Area	COLORADO	Well	BARCLAY 4C-27HZ
Field	WELD COUNTY (KERR MCGEE)	Wellbore	BARCLAY 4C-27HZ AWB
Facility	SEC.27-T3N-R66W		

WELLPATH COMMENTS					
MD [ft]	Inclination [°]	Azimuth [°]	TVD [ft]	Comment	
17.00	0.000	82.290	17.00	Tie-On	
142.00	0.660	82.290	142.00	Begin BHI MWD Surveys	
7892.00	88.107	357.367	7402.87	7" Casing Point	
11839.00	88.890	2.420	7407.18	Last BHI MWD Survey	
11900.00	88.890	2.420	7408.36	Projection to Bit	