

Field—Pink

**The Road to Excellence Starts with Safety**

|  |                      |   |                        |
|--|----------------------|---|------------------------|
| Sold To #: 304535                                    | Ship To #: 2075354   | Quote #:  | Sales Order #: 9282802 |
| Customer: PDC ENERGY EBUS                            |                      | Customer Rep: ALVARODO, PHILIP                          |                        |
| Well Name: Booth                                     | Well #: 25-32        | API/UWI #:  |                        |
| Field: Wattenberg                                    | City (SAP): MILLIKEN | County/Parish: Weld                                     | State: Colorado        |
| Legal Description:                                   |                      |   |                        |
| Lat: N 40.373 deg. OR N 40 deg. 22 min. 22.166 secs. |                      | Long: W 104.838 deg. OR W -105 deg. 9 min. 41.533 secs. |                        |
| Contractor:  |                      | Rig/Platform Name/Num:                                  |                        |
| Job Purpose: Recement Service                        |                      |   | Ticket Amount:         |
| Well Type: Development Well                          |                      | Job Type: Recement Service                              |                        |
| Sales Person: FLING, MATTHEW                         |                      | Srv Supervisor: PICKELL, CHRISTOPHER                    | MBU ID Emp #: 396838   |

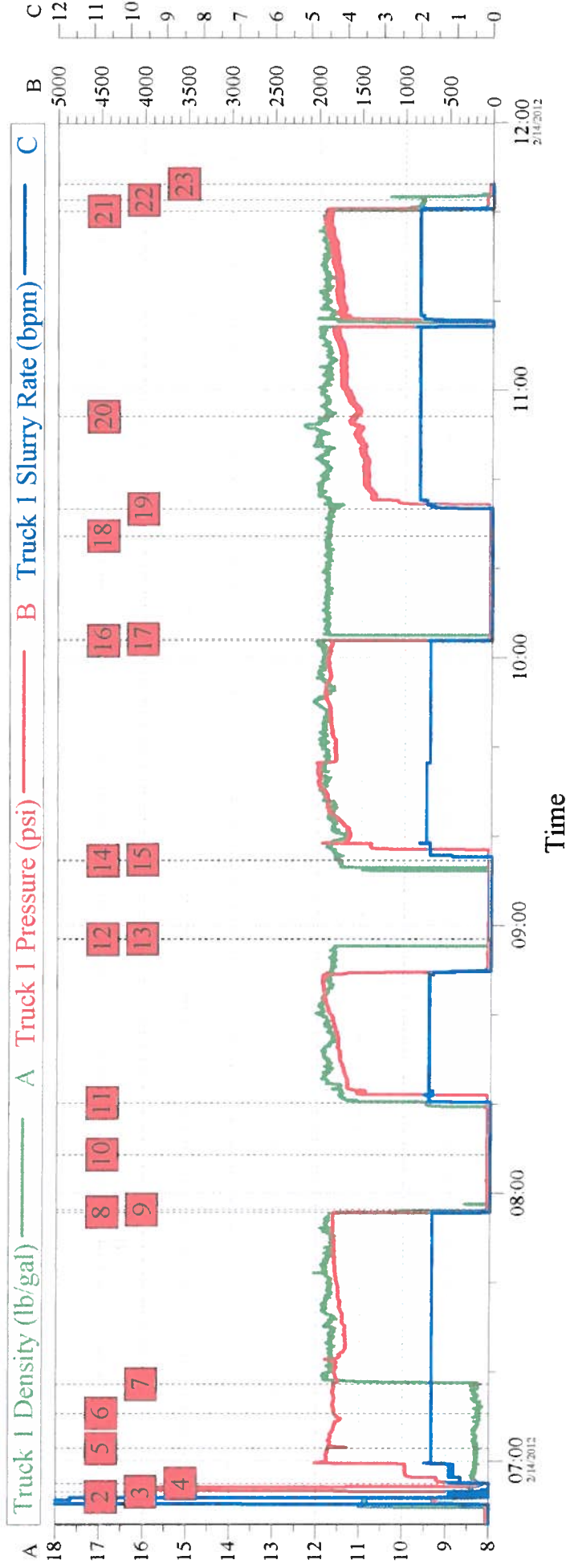
| Activity Description | Date/Time        | Cht # | Rate bbl/min | Volume bbl |       | Pressure psig |        | Comments  |
|----------------------|------------------|-------|--------------|------------|-------|---------------|--------|---|
|                      |                  |       |              | Stage      | Total | Tubing        | Casing |   |
| Start Job            | 02/14/2012 06:51 |       |              |            |       |               |        |   |
| Test Lines           | 02/14/2012 06:53 |       | 1            |            |       | 3800.0        |        | PRESSURE TEST LINES TO 3500 PSI. CHECK FOR VISIBLE LEAKS AND PRESSURE LOSS          |
| Pump Spacer 1        | 02/14/2012 06:54 |       | 1.6          | 10         |       | 1780.0        |        | PUMP WATER SPACER WITH CLAYWEB. WATER PROVIDED BY THE RIG                           |
| Pump Spacer 2        | 02/14/2012 07:02 |       | 1.6          | 12         | 22    | 1780.0        |        | PUMP MUDFLUSH SPACER MIXED WITH WATER FROM THE RIG                                  |
| Pump Spacer 1        | 02/14/2012 07:10 |       | 1.6          | 10         | 32    | 1780.0        |        | PUMP WATER SPACER WITH CLAYWEB. WATER PROVIDED BY THE RIG                           |
| Pump Cement          | 02/14/2012 07:17 |       | 1.6          | 59         | 91    | 1780.0        |        | PUMP FILLCEM CEMENT 156 SKS 11.8 PPG 2.12 CUFT/SK 11.55 GAL/SK MIXED WITH RIG WATER |
| Shutdown             | 02/14/2012 07:55 |       |              |            |       |               |        | SHUTDOWN FOR RIG TO PULL 38 JOINTS OF 1 1/4 INCH TUBING                             |
| Pump Cement          | 02/14/2012 08:20 |       | 1.7          | 50         | 141   | 2000.0        |        | PUMP FILLCEM CEMENT 133 SKS 11.8 PPG 2.12 CUFT/SK 11.55 GAL/SK MIXED WITH RIG WATER |

## Cementing Job Log

| Activity Description | Date/Time           | Cht<br># | Rate<br>bbl/<br>min | Volume<br>bbl |       | Pressure<br>psig |        | Comments   |
|----------------------|---------------------|----------|---------------------|---------------|-------|------------------|--------|--|
|                      |                     |          |                     | Stage         | Total | Tubing           | Casing |  |
| Shutdown             | 02/14/2012<br>08:56 |          |                     |               |       |                  |        | SHUTDOWN FOR RIG<br>TO PULL 35 JOINTS  |
| Pump Cement          | 02/14/2012<br>09:14 |          | 1.7                 | 85            | 226   | 2000.<br>0       |        | PUMP FILLCEM<br>CEMENT 225 SKS 11.8<br>PPG 2.12 CUFT/SK<br>11.55 GAL/SK MIXED<br>WITH RIG WATER  |
| Shutdown             | 02/14/2012<br>10:03 |          |                     |               |       |                  |        | SHUTDOWN FOR RIG<br>TO PULL 53 JOINTS  |
| Pump Cement          | 02/14/2012<br>10:33 |          | 2                   | 38            | 264   | 1400.<br>0       |        | PUMP FILLCEM 11.8<br>PPG 2.06 CUFT/SK<br>11.55 GAL/SK  |
| Pump Tail Cement     | 02/14/2012<br>10:54 |          | 2                   | 105           | 369   | 1500.<br>0       |        | PUMP SECOND<br>FILLCEM BLEND 285<br>SKS 11.8 PPG 2.06<br>CUFT/SK 11.15 GAL/SK<br>MIXED WITH RIG<br>WATER. GOT CEMENT<br>BACK TO SURFACE<br>THEN PUMPED 3 BBL<br>PLUS 8 BBL FROM<br>THE TUB |
| Pump Displacement    | 02/14/2012<br>11:40 |          |                     |               |       |                  |        | DISPLACE TO CLEAN<br>LINES USING RIG<br>WATER  |
| Shutdown             | 02/14/2012<br>11:42 |          |                     |               |       |                  |        |  |
| End Job              | 02/14/2012<br>11:42 |          |                     |               |       |                  |        |  |



# BOOTH 25-32 PDC



## Global Event Log

| Intersection          | T1P            | Intersection          | T1P            | Intersection          | T1P            |
|-----------------------|----------------|-----------------------|----------------|-----------------------|----------------|
| 2 Start Job           | 06:51:55 207.7 | 3 Test Lines          | 06:53:05 141.9 | 4 Pump Water Spacer   | 06:54:53 67.59 |
| 5 Pump Mudflush       | 07:02:48 1855  | 6 Pump Water Spacer   | 07:10:42 1786  | 7 Pump Fillcem 11.8#  | 07:17:11 1798  |
| 8 Shutdown            | 07:55:46 115.0 | 9 Pause               | 07:56:20 36.85 | 10 Resume             | 08:08:37 33.00 |
| 11 Pump Fillcem 11.8# | 08:20:14 44.00 | 12 Shutdown           | 08:56:53 32.00 | 13 Pause              | 08:57:02 32.00 |
| 14 Resume             | 09:14:30 33.00 | 15 Pump Fillcem 11.8# | 09:14:41 39.00 | 16 Shutdown           | 10:03:54 131.9 |
| 17 Pause              | 10:04:08 54.72 | 18 Resume             | 10:27:19 27.00 | 19 Pump Fillcem 11.8# | 10:33:25 34.00 |
| 20 Pump Fillcem 11.8# | 10:54:05 1608  | 21 Pump Displacement  | 11:40:06 1906  | 22 End Job            | 11:42:35 73.00 |
| 23 Ending Job         | 11:46:12 35.00 |                       |                |                       |                |

Customer: PDC  
Well Description: BOOTH 25-32  
SERVICE SUPERVISOR CHRISTOPHER PICKELL

Job Date: 14-Feb-2012  
UWI: 05-123-19894-00  
SERVICE OPERATOR RYAN OZBUN

Sales Order #: 9282802