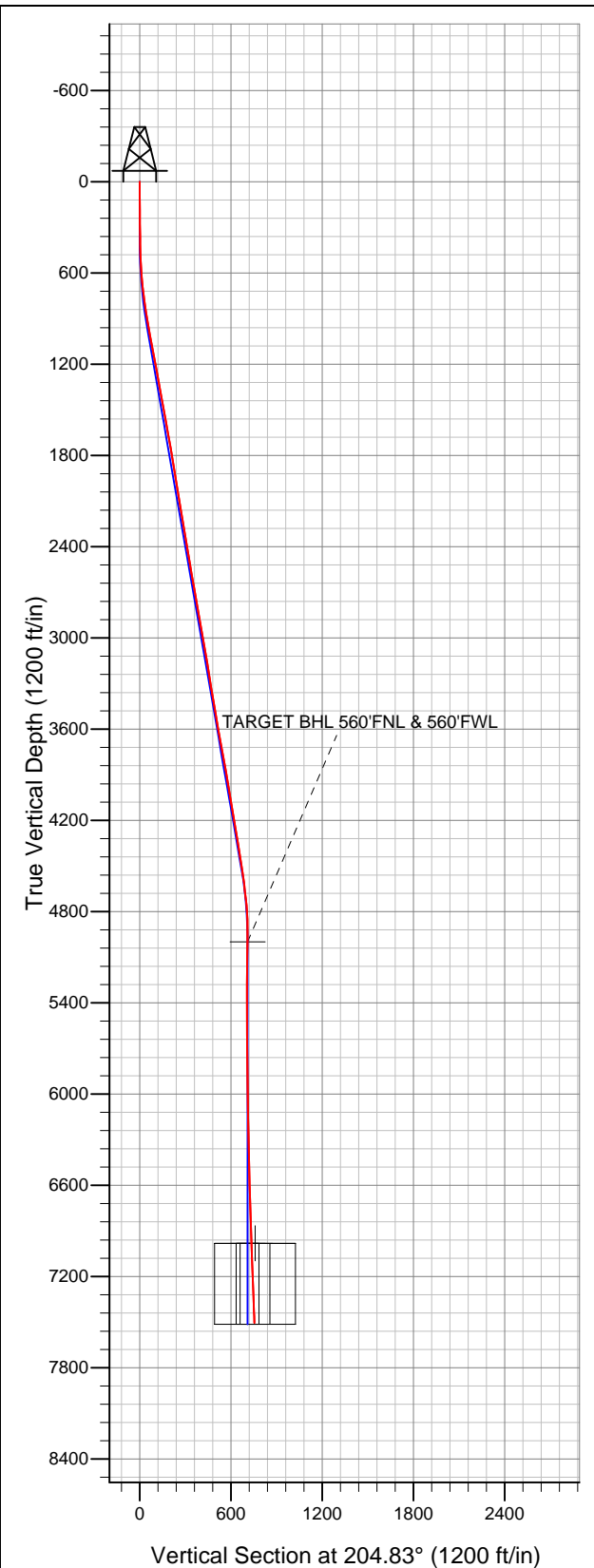


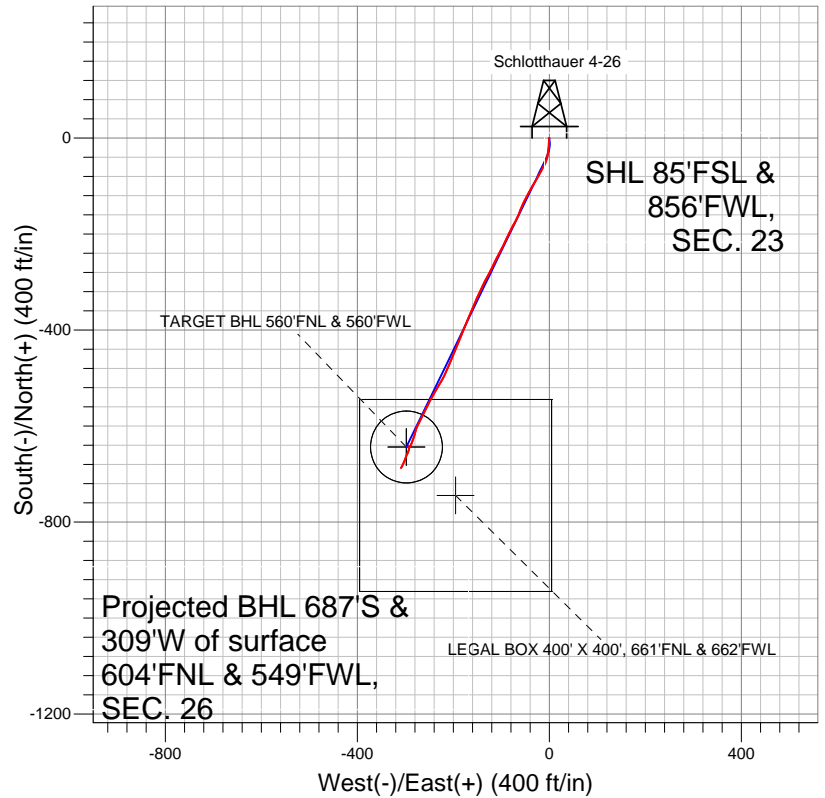
**Well Name: Schlotthauer 4-26**

Surface Location: Schlotthauer 13-23 Pad Sec.23-T7N-R67W  
North American Datum 1983 US State Plane 1983Colorado Northern Zone  
Ground Elevation: 4966.0

+N/-S 0.0	+E/-W 0.0	Northing 1444797.94	Easting 3175940.28	Latitude 40.552646	Longitude -104.866850	Slot
		Original Well Elev	WELL @ 4977.0ft (Original Well Elev)			



**BAYSWATER EXPLORATION & PRODUCTION**



**LEGEND**

- Survey #1
- Schlotthauer 4-26, Wellbore #1, Plan #2 (3-13-12) R V0
- Wellbore #1

**Final Survey Plot**

Projected Final Survey -  
7565'MD & 7506'TVD @ 753'VS  
2.10 deg Inc 205.50 deg AZ

Project: SEC.23-T7N-R67W  
Site: Schlotthauer 13-23 Pad Sec.23-T7N-R67W  
Well: Schlotthauer 4-26  
Plan: Wellbore #1



# **BAYSWATER EXPLORATION & PRODUCTION**

**SEC.23-T7N-R67W**

**Schlotthauer 13-23 Pad Sec.23-T7N-R67W**

**Schlotthauer 4-26**

**Wellbore #1**

**Survey: Survey #1**

## **Standard Survey Report**

**19 March, 2012**

<b>Company:</b>	BAYSWATER EXPLORATION & PRODUCTION	<b>Local Co-ordinate Reference:</b>	Well Schlotthauer 4-26
<b>Project:</b>	SEC.23-T7N-R67W	<b>TVD Reference:</b>	WELL @ 4977.0ft (Original Well Elev)
<b>Site:</b>	Schlotthauer 13-23 Pad Sec.23-T7N-R67W	<b>MD Reference:</b>	WELL @ 4977.0ft (Original Well Elev)
<b>Well:</b>	Schlotthauer 4-26	<b>North Reference:</b>	True
<b>Wellbore:</b>	Wellbore #1	<b>Survey Calculation Method:</b>	Minimum Curvature
<b>Design:</b>	Wellbore #1	<b>Database:</b>	Landmark

<b>Project</b>	SEC.23-T7N-R67W, Weld County, CO		
<b>Map System:</b>	US State Plane 1983	<b>System Datum:</b>	Mean Sea Level
<b>Geo Datum:</b>	North American Datum 1983		Using Well Reference Point
<b>Map Zone:</b>	Colorado Northern Zone		Using geodetic scale factor

Site		Schlotthauer 13-23 Pad Sec.23-T7N-R67W			
Site Position:		Northing:	1,444,798.08ft	Latitude:	40.552646
From:	Lat/Long	Easting:	3,175,955.28ft	Longitude:	-104.866796
Position Uncertainty:	0.0 ft	Slot Radius:	"	Grid Convergence:	0.41 °

Well	Schlotthauer 4-26					
Well Position	+N-S	0.0 ft	Northing:	1,444,797.94 ft	Latitude:	40.552646
	+E-W	0.0 ft	Easting:	3,175,940.28 ft	Longitude:	-104.866850
Position Uncertainty		0.0 ft	Wellhead Elevation:	ft	Ground Level:	4,966.0 ft

Wellbore	Wellbore #1				
Magnetics	Model Name	Sample Date	Declination (°)	Dip Angle (°)	Field Strength (nT)
	IGRF2010	3/13/2012	8.83	67.13	53,121

Design	Wellbore #1				
Audit Notes:					
Version:	1.0	Phase:	ACTUAL	Tie On Depth:	0.0
Vertical Section:	Depth From (TVD) (ft)	+N/-S (ft)	+E/-W (ft)	Direction (°)	
	0.0	0.0	0.0	204.83	

Survey Program		Date	3/19/2012	
From (ft)	To (ft)	Survey (Wellbore)	Tool Name	Description
97.0	7,565.0	Survey #1 (Wellbore #1)	MWD	MWD - Standard

Survey										
	Measured Depth (ft)	Inclination (°)	Azimuth (°)	Vertical Depth (ft)	+N/-S (ft)	+E/-W (ft)	Vertical Section (ft)	Dogleg Rate (°/100ft)	Build Rate (°/100ft)	Turn Rate (°/100ft)
	0.0	0.00	0.00	0.0	0.0	0.0	0.0	0.00	0.00	0.00
	97.0	0.40	250.80	97.0	-0.1	-0.3	0.2	0.41	0.41	0.00
	185.0	0.60	218.60	185.0	-0.6	-0.9	0.9	0.38	0.23	-36.59
	276.0	0.60	142.50	276.0	-1.3	-0.9	1.6	0.81	0.00	-83.63
	368.0	0.60	198.30	368.0	-2.2	-0.8	2.3	0.61	0.00	60.65
	460.0	1.50	172.40	460.0	-3.8	-0.8	3.8	1.08	0.98	-28.15
	552.0	3.50	181.20	551.9	-7.8	-0.7	7.4	2.21	2.17	9.57
	644.0	5.70	187.00	643.6	-15.2	-1.3	14.3	2.44	2.39	6.30
	693.0	6.50	185.70	692.3	-20.3	-1.8	19.2	1.66	1.63	-2.65
	741.0	7.40	184.80	739.9	-26.1	-2.4	24.7	1.89	1.88	-1.88
	835.0	9.00	191.00	833.0	-39.4	-4.3	37.5	1.94	1.70	6.60
	928.0	9.00	206.50	924.9	-53.0	-8.9	51.9	2.60	0.00	16.67

<b>Company:</b>	BAYSWATER EXPLORATION & PRODUCTION	<b>Local Co-ordinate Reference:</b>	Well Schlotthauer 4-26
<b>Project:</b>	SEC.23-T7N-R67W	<b>TVD Reference:</b>	WELL @ 4977.0ft (Original Well Elev)
<b>Site:</b>	Schlotthauer 13-23 Pad Sec.23-T7N-R67W	<b>MD Reference:</b>	WELL @ 4977.0ft (Original Well Elev)
<b>Well:</b>	Schlotthauer 4-26	<b>North Reference:</b>	True
<b>Wellbore:</b>	Wellbore #1	<b>Survey Calculation Method:</b>	Minimum Curvature
<b>Design:</b>	Wellbore #1	<b>Database:</b>	Landmark

Survey									
Measured Depth (ft)	Inclination (°)	Azimuth (°)	Vertical Depth (ft)	+N/-S (ft)	+E/-W (ft)	Vertical Section (ft)	Dogleg Rate (°/100ft)	Build Rate (°/100ft)	Turn Rate (°/100ft)
1,022.0	10.70	208.40	1,017.5	-67.3	-16.3	67.9	1.84	1.81	2.02
1,116.0	11.10	210.60	1,109.8	-82.7	-25.1	85.6	0.61	0.43	2.34
1,209.0	10.50	208.30	1,201.1	-97.9	-33.7	103.0	0.79	-0.65	-2.47
1,303.0	10.30	210.50	1,293.6	-112.7	-42.0	119.9	0.47	-0.21	2.34
1,397.0	10.50	207.70	1,386.0	-127.5	-50.2	136.8	0.58	0.21	-2.98
1,491.0	10.00	202.20	1,478.5	-142.7	-57.3	153.5	1.17	-0.53	-5.85
1,584.0	10.50	201.90	1,570.1	-158.0	-63.5	170.1	0.54	0.54	-0.32
1,678.0	10.50	207.40	1,662.5	-173.5	-70.7	187.2	1.07	0.00	5.85
1,772.0	9.90	209.30	1,755.0	-188.2	-78.6	203.8	0.73	-0.64	2.02
1,865.0	9.10	205.70	1,846.7	-201.8	-85.7	219.1	1.07	-0.86	-3.87
1,959.0	9.40	203.90	1,939.5	-215.5	-92.0	234.2	0.44	0.32	-1.91
2,053.0	9.20	206.60	2,032.3	-229.3	-98.5	249.4	0.51	-0.21	2.87
2,146.0	9.50	210.20	2,124.0	-242.5	-105.7	264.5	0.71	0.32	3.87
2,240.0	9.20	205.50	2,216.8	-256.0	-112.8	279.7	0.87	-0.32	-5.00
2,334.0	9.40	205.60	2,309.5	-269.7	-119.3	294.9	0.21	0.21	0.11
2,427.0	9.70	208.70	2,401.3	-283.4	-126.4	310.3	0.64	0.32	3.33
2,521.0	9.70	206.30	2,493.9	-297.5	-133.7	326.1	0.43	0.00	-2.55
2,615.0	9.60	205.40	2,586.6	-311.7	-140.6	341.9	0.19	-0.11	-0.96
2,708.0	10.50	205.20	2,678.2	-326.3	-147.5	358.1	0.97	0.97	-0.22
2,802.0	9.30	204.70	2,770.8	-341.0	-154.3	374.3	1.28	-1.28	-0.53
2,896.0	10.40	202.60	2,863.4	-355.7	-160.8	390.4	1.23	1.17	-2.23
2,990.0	10.40	202.50	2,955.8	-371.4	-167.3	407.3	0.02	0.00	-0.11
3,083.0	9.70	203.50	3,047.4	-386.3	-173.6	423.5	0.78	-0.75	1.08
3,177.0	9.30	199.80	3,140.1	-400.7	-179.3	439.0	0.78	-0.43	-3.94
3,271.0	9.10	202.40	3,232.9	-414.8	-184.7	454.0	0.49	-0.21	2.77
3,364.0	9.80	201.90	3,324.6	-428.9	-190.5	469.3	0.76	0.75	-0.54
3,458.0	9.70	205.50	3,417.3	-443.5	-196.9	485.2	0.66	-0.11	3.83
3,552.0	9.40	202.00	3,510.0	-457.7	-203.2	500.8	0.70	-0.32	-3.72
3,645.0	9.90	202.30	3,601.7	-472.2	-209.1	516.3	0.54	0.54	0.32
3,739.0	10.30	203.10	3,694.2	-487.4	-215.4	532.8	0.45	0.43	0.85
3,833.0	10.50	209.90	3,786.7	-502.5	-223.0	549.7	1.32	0.21	7.23
3,926.0	9.80	210.90	3,878.2	-516.7	-231.3	566.0	0.78	-0.75	1.08
4,020.0	9.60	210.30	3,970.9	-530.3	-239.3	581.8	0.24	-0.21	-0.64
4,114.0	9.10	207.70	4,063.6	-543.7	-246.7	597.0	0.70	-0.53	-2.77
4,208.0	9.80	206.00	4,156.3	-557.4	-253.7	612.4	0.80	0.74	-1.81
4,301.0	9.50	206.70	4,248.0	-571.4	-260.6	628.0	0.35	-0.32	0.75
4,395.0	9.70	207.60	4,340.7	-585.4	-267.8	643.7	0.27	0.21	0.96
4,489.0	9.00	205.30	4,433.5	-599.0	-274.6	659.0	0.84	-0.74	-2.45
4,582.0	8.40	195.50	4,525.4	-612.1	-279.5	672.9	1.72	-0.65	-10.54
4,676.0	7.50	196.40	4,618.5	-624.6	-283.1	685.8	0.97	-0.96	0.96
4,770.0	6.10	201.10	4,711.8	-635.2	-286.6	696.8	1.60	-1.49	5.00
4,863.0	4.20	212.50	4,804.4	-642.7	-290.2	705.1	2.31	-2.04	12.26
4,957.0	0.90	271.00	4,898.3	-645.6	-292.8	708.8	4.05	-3.51	62.23
5,051.0	1.50	11.00	4,992.3	-644.3	-293.3	708.0	2.00	0.64	106.38
5,058.7	1.44	11.95	5,000.0	-644.2	-293.3	707.8	0.87	-0.81	12.40
TARGET BHL 560'FNL & 560'FWL									
5,144.0	0.80	32.20	5,085.3	-642.6	-292.7	706.1	0.87	-0.75	23.73
5,238.0	0.50	33.20	5,179.3	-641.7	-292.2	705.1	0.32	-0.32	1.06
5,332.0	0.30	347.70	5,273.3	-641.1	-292.0	704.5	0.38	-0.21	-48.40
5,425.0	0.20	295.50	5,366.3	-640.8	-292.2	704.3	0.26	-0.11	-56.13
5,519.0	0.10	215.00	5,460.3	-640.8	-292.4	704.3	0.22	-0.11	-85.64
5,613.0	0.50	138.20	5,554.3	-641.2	-292.2	704.6	0.52	0.43	-81.70
5,707.0	0.40	156.50	5,648.3	-641.8	-291.8	705.0	0.18	-0.11	19.47

<b>Company:</b>	BAYSWATER EXPLORATION & PRODUCTION	<b>Local Co-ordinate Reference:</b>	Well Schlotthauer 4-26
<b>Project:</b>	SEC.23-T7N-R67W	<b>TVD Reference:</b>	WELL @ 4977.0ft (Original Well Elev)
<b>Site:</b>	Schlotthauer 13-23 Pad Sec.23-T7N-R67W	<b>MD Reference:</b>	WELL @ 4977.0ft (Original Well Elev)
<b>Well:</b>	Schlotthauer 4-26	<b>North Reference:</b>	True
<b>Wellbore:</b>	Wellbore #1	<b>Survey Calculation Method:</b>	Minimum Curvature
<b>Design:</b>	Wellbore #1	<b>Database:</b>	Landmark

Survey									
Measured Depth (ft)	Inclination (°)	Azimuth (°)	Vertical Depth (ft)	+N/-S (ft)	+E/-W (ft)	Vertical Section (ft)	Dogleg Rate (°/100ft)	Build Rate (°/100ft)	Turn Rate (°/100ft)
5,800.0	0.80	182.10	5,741.3	-642.7	-291.6	705.8	0.51	0.43	27.53
5,894.0	0.90	194.00	5,835.3	-644.1	-291.9	707.1	0.22	0.11	12.66
5,988.0	1.10	180.80	5,929.3	-645.7	-292.0	708.7	0.32	0.21	-14.04
6,081.0	0.90	191.80	6,022.3	-647.3	-292.2	710.2	0.30	-0.22	11.83
6,175.0	1.20	183.00	6,116.2	-649.0	-292.4	711.8	0.36	0.32	-9.36
6,269.0	1.20	207.80	6,210.2	-650.9	-292.9	713.7	0.55	0.00	26.38
6,362.0	1.10	206.30	6,303.2	-652.6	-293.8	715.6	0.11	-0.11	-1.61
6,456.0	1.50	197.80	6,397.2	-654.5	-294.5	717.7	0.47	0.43	-9.04
6,550.0	1.50	207.60	6,491.1	-656.8	-295.5	720.2	0.27	0.00	10.43
6,643.0	1.30	207.20	6,584.1	-658.8	-296.5	722.4	0.22	-0.22	-0.43
6,737.0	1.40	196.80	6,678.1	-660.9	-297.4	724.6	0.28	0.11	-11.06
6,831.0	1.80	201.70	6,772.1	-663.3	-298.2	727.2	0.45	0.43	5.21
6,925.0	1.80	197.20	6,866.0	-666.1	-299.2	730.2	0.15	0.00	-4.79
7,018.0	1.80	209.00	6,959.0	-668.8	-300.4	733.1	0.40	0.00	12.69
7,040.3	1.82	208.80	6,981.2	-669.4	-300.7	733.8	0.11	0.11	-0.89
TARGET CIRCLE 560'FNL & 560'FWL									
7,041.5	1.83	208.79	6,982.5	-669.4	-300.7	733.8	0.11	0.11	-0.87
LEGAL BOX 400' X 400', 661'FNL & 662'FWL									
7,112.0	1.90	208.20	7,052.9	-671.4	-301.8	736.1	0.11	0.11	-0.84
7,206.0	2.40	194.20	7,146.8	-674.7	-303.0	739.6	0.77	0.53	-14.89
7,299.0	2.20	202.10	7,239.8	-678.3	-304.2	743.3	0.40	-0.22	8.49
7,393.0	2.30	212.40	7,333.7	-681.5	-305.9	747.0	0.44	0.11	10.96
7,487.0	2.10	204.70	7,427.6	-684.7	-307.6	750.6	0.38	-0.21	-8.19
7,523.0	2.10	205.50	7,463.6	-685.9	-308.2	751.9	0.08	0.00	2.22
7,565.0	2.10	205.50	7,505.6	-687.3	-308.8	753.4	0.00	0.00	0.00

Checked By: \_\_\_\_\_ Approved By: \_\_\_\_\_ Date: \_\_\_\_\_