
WILLIAMS PRODUCTION RMT INC - EBUS

**KP 423-21
MAMM CREEK
Garfield County , Colorado**

Cement Surface Casing
23-Sep-2011

Post Job Report

The Road to Excellence Starts with Safety

Sold To #: 300721		Ship To #: 2878356		Quote #:		Sales Order #: 8469948	
Customer: WILLIAMS PRODUCTION RMT INC - EBUS				Customer Rep: Dunihoo, Al			
Well Name: KP			Well #: 423-21			API/UWI #: 05-045-20264	
Field: MAMM CREEK		City (SAP): SILT		County/Parish: Garfield		State: Colorado	
Lat: N 39.51 deg. OR N 39 deg. 30 min. 37.757 secs.				Long: E 107.557 deg. OR E 107 deg. 33 min. 26.59 secs.			
Contractor: Cyclone Drilling, Inc.			Rig/Platform Name/Num: Cylone 30				
Job Purpose: Cement Surface Casing							
Well Type: Development Well			Job Type: Cement Surface Casing				
Sales Person: KOHL, KYLE			Srv Supervisor: SLAUGHTER, JESSE			MBU ID Emp #: 454315	

Job Personnel

HES Emp Name	Exp Hrs	Emp #	HES Emp Name	Exp Hrs	Emp #	HES Emp Name	Exp Hrs	Emp #
BATH, KYLE Thomas	13.5	477632	BECK, MICHAEL George	13.5	489151	SLAUGHTER, JESSE Dean	13.5	454315
YOUNG, JEREMY R	13.5	418013						

Equipment

HES Unit #	Distance-1 way	HES Unit #	Distance-1 way	HES Unit #	Distance-1 way	HES Unit #	Distance-1 way
10592964	60 mile	10744549	60 mile	10744648C	60 mile	10951245	60 mile
10998508	60 mile						

Job Hours

Date	On Location Hours	Operating Hours	Date	On Location Hours	Operating Hours	Date	On Location Hours	Operating Hours
09-22-2011	4	0	09-23-2011	9.5	3			

TOTAL Total is the sum of each column separately

Job

Job Times

Formation Name	Formation Depth (MD)	Top	Bottom	Called Out	Date	Time	Time Zone
Form Type			BHST	On Location	22 - Sep - 2011	15:30	MST
Job depth MD	1079.5 ft		Job Depth TVD	Job Started	22 - Sep - 2011	20:00	MST
Water Depth			Wk Ht Above Floor	Job Completed	23 - Sep - 2011	06:43	MST
Perforation Depth (MD)	From		To	Job Completed	23 - Sep - 2011	07:48	MST
				Departed Loc	23 - Sep - 2011	09:30	MST

Well Data

Description	New / Used	Max pressure psig	Size in	ID in	Weight lbm/ft	Thread	Grade	Top MD ft	Bottom MD ft	Top TVD ft	Bottom TVD ft
13 1/2" Open Hole				13.5				.	1095.		
9 5/8" Surface Casing	New		9.625	9.001	32.3		H-40	.	1079.5		

Sales/Rental/3rd Party (HES)

Description	Qty	Qty uom	Depth	Supplier
PLUG,CMTG,TOP,9 5/8,HWE,8.16 MIN/9.06 MA	1	EA		

Tools and Accessories

Type	Size	Qty	Make	Depth	Type	Size	Qty	Make	Depth	Type	Size	Qty	Make
Guide Shoe					Packer					Top Plug	9.625	1	HES
Float Shoe					Bridge Plug					Bottom Plug			
Float Collar					Retainer					SSR plug set			
Insert Float										Plug Container	9.625	1	HES
Stage Tool										Centralizers			

Miscellaneous Materials

Gelling Agt	Conc	Surfactant	Conc	Acid Type	Qty	Conc	%
Treatment Fld	Conc	Inhibitor	Conc	Sand Type	Size	Qty	

Fluid Data

Stage/Plug #: 1

Fluid #	Stage Type	Fluid Name	Qty	Qty uom	Mixing Density lbm/gal	Yield ft ³ /sk	Mix Fluid Gal/sk	Rate bbl/min	Total Mix Fluid Gal/sk
1	Water Spacer	FRESH WATER	20.00	bbl	8.33	.0	.0	4	
2	VersaCem Tail Cement	VERSACEM (TM) SYSTEM (452010)	315.0	sacks	12.8	2.11	11.75	8	11.75
	11.75 Gal	FRESH WATER							
3	Displacement Fluid	FRESH WATER	81.5	bbl	8.33	.0	.0	10	
Calculated Values		Pressures		Volumes					
Displacement	81.5	Shut In: Instant		Lost Returns	NO	Cement Slurry	118.4	Pad	
Top Of Cement	SURFACE	5 Min		Cement Returns	25	Actual Displacement	81.5	Treatment	
Frac Gradient		15 Min		Spacers	20	Load and Breakdown		Total Job	220
Rates									
Circulating		Mixing	8	Displacement	10	Avg. Job	9		
Cement Left In Pipe	Amount	0 ft	Reason	Shoe Joint					
Frac Ring # 1 @	ID	Frac ring # 2 @	ID	Frac Ring # 3 @	ID	Frac Ring # 4 @	ID		
The Information Stated Herein Is Correct				Customer Representative Signature					

The Road to Excellence Starts with Safety

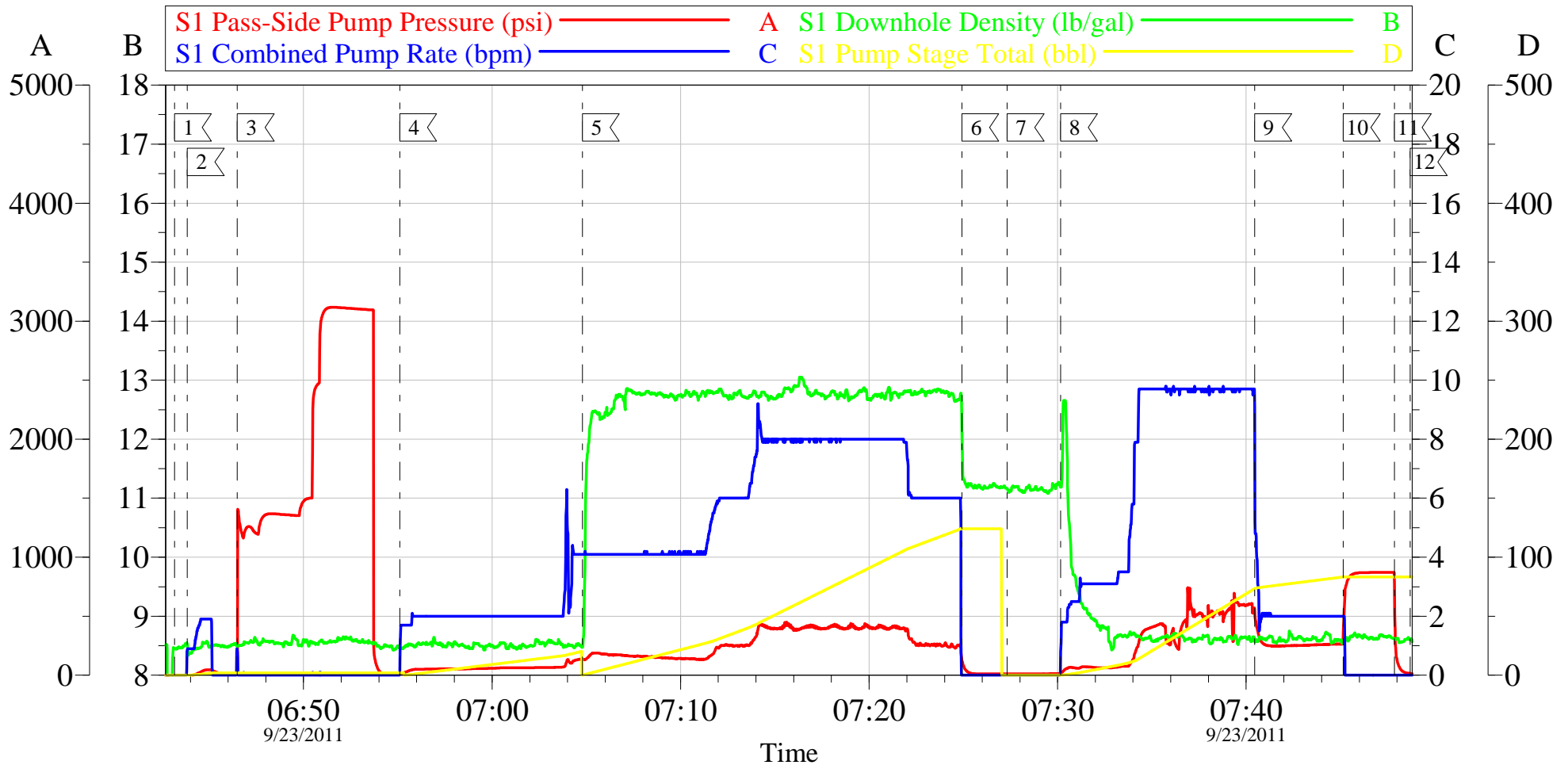
Sold To #: 300721	Ship To #: 2878356	Quote #:	Sales Order #: 8469948
Customer: WILLIAMS PRODUCTION RMT INC - EBUS		Customer Rep: Dunihoo, Al	
Well Name: KP		Well #: 423-21	API/UWI #: 05-045-20264
Field: MAMM CREEK	City (SAP): SILT	County/Parish: Garfield	State: Colorado
Legal Description:			
Lat: N 39.51 deg. OR N 39 deg. 30 min. 37.757 secs.		Long: E 107.557 deg. OR E 107 deg. 33 min. 26.59 secs.	
Contractor: Cyclone Drilling, Inc.		Rig/Platform Name/Num: Cylone 30	
Job Purpose: Cement Surface Casing			Ticket Amount:
Well Type: Development Well		Job Type: Cement Surface Casing	
Sales Person: KOHL, KYLE		Srvc Supervisor: SLAUGHTER, JESSE	MBU ID Emp #: 454315

Activity Description	Date/Time	Cht #	Rate bbl/min	Volume bbl		Pressure psig		Comments
				Stage	Total	Tubing	Casing	
Call Out	09/22/2011 15:30							TD 1095 FT, TP 1079.5 FT, SHOE 44.5 FT, CSG 9 5/8 IN 32.3 LB/FT, HOLE 13 1/2 IN, MUD WT 9.2 PPG
Pre-Convoy Safety Meeting	09/22/2011 17:50							WITH ALL HES PERSONNEL
Crew Leave Yard	09/22/2011 18:00							
Arrive At Loc	09/22/2011 20:00							RIG WAS DRILLING UPON HES ARRIVAL
Assessment Of Location Safety Meeting	09/23/2011 04:50							WITH ALL HES PERSONNEL
Other	09/23/2011 05:00							SPOT EQUIPMENT
Pre-Rig Up Safety Meeting	09/23/2011 05:20							WITH ALL HES PERSONNEL
Rig-Up Equipment	09/23/2011 05:30							
Pre-Job Safety Meeting	09/23/2011 06:30							WITH ALL PERSONNEL ON LOCATION
Start Job	09/23/2011 06:43							
Other	09/23/2011 06:46		2	2			47.0	FILL LINES WITH FRESH WATER
Test Lines	09/23/2011 06:47							TESTED LINES TO 3117 PSI PRESSURE HOLDING
Pump Spacer 1	09/23/2011 06:55		4	20			135.0	FRESH WATER
Pump Tail Cement	09/23/2011 07:04		8	118.4			275.0	315 SKS AT 12.8 PPG 2.11 FT3/SK, 11.75 GAL/SK
Shutdown	09/23/2011 07:24							

Activity Description	Date/Time	Cht #	Rate bbl/min	Volume bbl		Pressure psig		Comments
				Stage	Total	Tubing	Casing	
Drop Top Plug	09/23/2011 07:27							PLUG LAUNCHED
Pump Displacement	09/23/2011 07:30		10	71.5			550.0	
Slow Rate	09/23/2011 07:40		2	10			260.0	SLOW RATE 10 BBLS PRIOR TO CALCULATED DISPLACEMENT
Bump Plug	09/23/2011 07:45		2		81.5		865.0	PLUG BUMPED
Check Floats	09/23/2011 07:47							FLOATS HOLDING. HES RETURNED 1/2 BBL H2O TO PUMP
End Job	09/23/2011 07:48							PIPE WAS STATIC DURING JOB, GOOD CIRCULATION THROUGHOUT JOB. HES RETURNED 25 BBL CEMENT TO SURFACE
Pre-Rig Down Safety Meeting	09/23/2011 07:55							WITH ALL HES PERSONNEL
Rig-Down Equipment	09/23/2011 08:00							
Pre-Convoy Safety Meeting	09/23/2011 09:20							WITH ALL HES PERSONNEL
Crew Leave Location	09/23/2011 09:30							
Comment	09/23/2011 09:31							THANK YOU FOR USING HALLIBURTON CEMENT DEPARTMENT. JESSE SLAUGHTER AND CREW.

WILLIAMS

KP 423-21, 9 5/8 SURFACE



Local Event Log

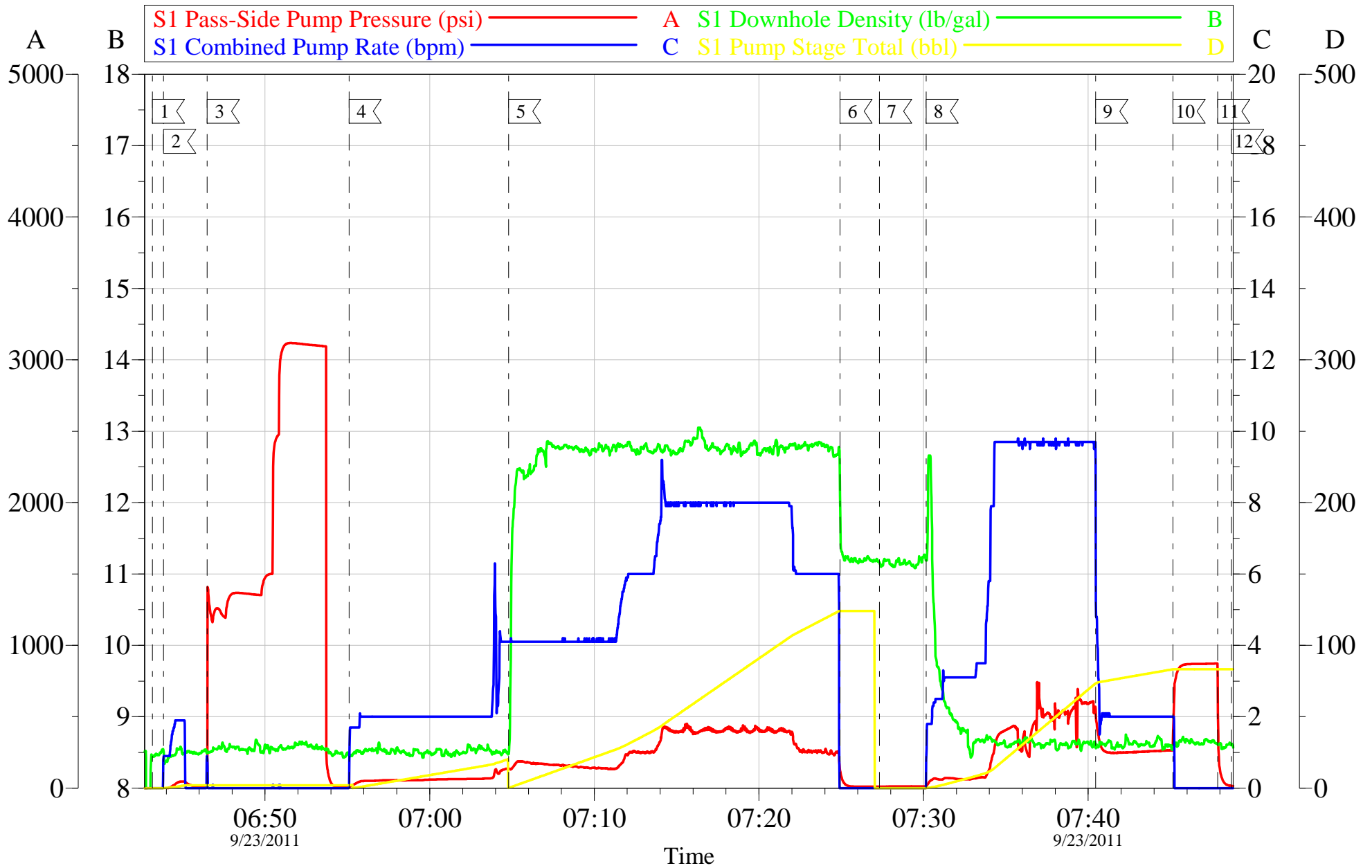
1 START JOB	06:43:09	2 FILL LINES	06:43:50	3 TEST LINES	06:46:29
4 PUMP H2O SPACER	06:55:06	5 PUMP TAIL CEMENT	07:04:48	6 SHUTDOWN	07:24:55
7 DROP TOP PLUG	07:27:19	8 PUMP DISPLACEMENT	07:30:09	9 SLOW RATE	07:40:27
10 BUMP PLUG	07:45:09	11 CHECK FLOATS	07:47:51	12 END JOB	07:48:42

Customer: WILLIAMS	Job Date: 23-Sep-2011	Sales Order #: 8469948
Well Description: KP 423-21	Job Type: SURFACE	ADC Used: YES
Customer Rep: AL DUNIHO	Service Supervisor: JESSE SLAUGHTER	Pump # / Operator: 6/KYLE BATH

OptiCem v6.4.10
23-Sep-11 07:56

WILLIAMS

KP 423-21, 9 5/8 SURFACE



Customer: WILLIAMS	Job Date: 23-Sep-2011	Sales Order #: 8469948
Well Description: KP 423-21	Job Type: SURFACE	ADC Used: YES
Customer Rep: AL DUNIHO	Service Supervisor: JESSE SLAUGHTER	Pump # / Operator: 6/KYLE BATH

OptiCem v6.4.10
23-Sep-11 07:56

HALLIBURTON

Water Analysis Report

Company: WILLIAMS PRODUCTION

Submitted by: JESSE SLAUGHTER

Attention: LAB

Lease KP

Well # 423-21

Date: 9/22/2011

Date Rec.:

S.O.# 8469948

Job Type: SURFACE

Specific Gravity	<i>MAX</i>	1
pH	<i>8</i>	6
Potassium (K)	<i>5000</i>	250 Mg / L
Calcium (Ca)	<i>500</i>	120 Mg / L
Iron (FE2)	<i>300</i>	0 Mg / L
Chlorides (Cl)	<i>3000</i>	0 Mg / L
Sulfates (SO ₄)	<i>1500</i>	UNDER 200 Mg / L
Chlorine (Cl ₂)		0 Mg / L
Temp	<i>40-80</i>	55 Deg
Total Dissolved Solids		210 Mg / L

Respectfully: JESSE SLAUGHTER

Title: CEMENTING SUPERVISOR

Location: Grand Junction, CO

NOTICE:

This report is limited to the described sample tested. Any person using or relying on this report agrees that Halliburton shall not be liable for any loss or damage whether due to act or omission resulting from such report or its

CUSTOMER SATISFACTION SURVEY

Sales Order #: 0	Line Item: 10	
Customer: WILLIAMS PRODUCTION RMT INC - EBUS		Job Type (BOM): CMT SURFACE CASING BOM
Customer Rep./Phone: AL DUNIHO		API / UWI: (leave blank if unknown) 05-045-20264
Well Name: KP		Well Number: 423-21
Well Type: Development Well	Well Country: United States of America	
H2S Present:	Well State:	Well County:

Dear Customer,

We hope that you were satisfied with the service quality of this job performed by Halliburton. It is the aim of our management and service personnel to deliver equipment and service of a standard unmatched in the service sector of the energy industry.

Please take the time to let us know if our performance met with your satisfaction. Please be as critical as possible to ensure we constantly improve our service. Your comments are of great value to us and are intended for the exclusive use of Halliburton.

CATEGORY	CUSTOMER SATISFACTION RESPONSE	
Survey Conducted Date	The date the survey was conducted	9/23/2011
Survey Interviewer	The survey interviewer is the person who initiated the survey.	JESSE SLAUGHTER (HB21762)
Customer Participation	Did the customer participate in this survey? (Y/N)	Yes
Customer Representative	Enter the Customer representative name	AL DUNIHO
HSE	Was our HSE performance satisfactory? Circle Y or N	Yes
Equipment	Were you satisfied with our Equipment? Circle Y or N	Yes
Personnel	Were you satisfied with our people? Circle Y or N	Yes
Customer Comment	Customer's Comment	GOOD JOB MEN!
Job DVA	Did we provide job DVA above our normal service today? Circle Y or N	No

CUSTOMER SIGNATURE