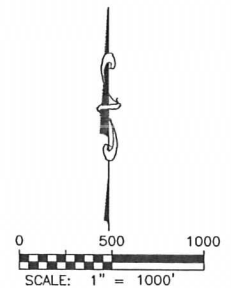
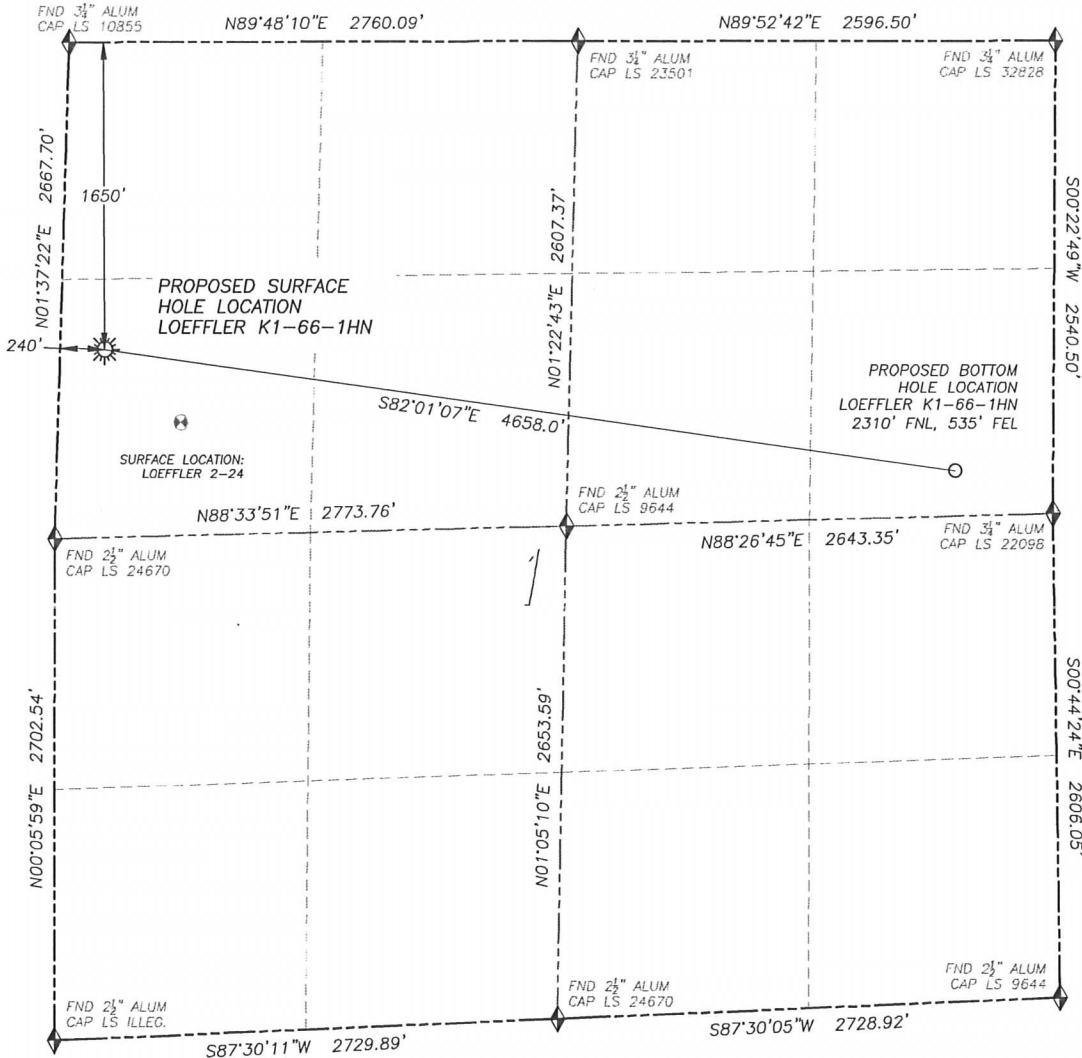


WELL LOCATION CERTIFICATE LOEFFLER K1-66-1HN

SECTION 1, TOWNSHIP 4 NORTH, RANGE 66 WEST OF THE 6TH PRINCIPAL MERIDIAN

**LEGEND**

- ◆ FOUND MONUMENT AS DESCRIBED
- ☼ PROPOSED WELL
- EXISTING WELL
- BOTTOM HOLE
- ⊗ ABANDONED WELL

NAD 83 LATITUDE AND LONGITUDE

LOEFFLER K1-66-1HN

SURFACE HOLE:

LATITUDE: N40.34390°

LONGITUDE: W104.73405°

ELEVATION: 4667'

FOOTAGE: 1650' FNL, 240' FWL

PDOP: 1.8

QTR/QTR: SW4/NW4

PROP LINE: 240'± WEST

BOTTOM HOLE:

LATITUDE: N40.34212°

LONGITUDE: W104.71750°

FOOTAGE: 2310' FNL, 535' FEL

NEAREST EXISTING WELL:

LOEFFLER 2-24 SURFACE HOLE

LATITUDE: N40.34282°

LONGITUDE: W104.73255°

ELEVATION: 4666'

571' SOUTHEAST

IN ACCORDANCE WITH A REQUEST FROM RYAN HAWKINS OF NOBLE ENERGY INC., DALEY LAND SURVEYING, INC. HAS DETERMINED THE SURFACE LOCATION OF THE LOEFFLER K1-66-1HN WELL TO BE 1650' FNL, 240' FWL, AS MEASURED AT NINETY (90) DEGREES FROM THE SECTION LINES OF SECTION 1, TOWNSHIP 4 NORTH, RANGE 66 WEST OF THE 6TH PRINCIPAL MERIDIAN, WELD COUNTY, COLORADO. THE BOTTOM HOLE LOCATION, PROVIDED BY THE CLIENT, IS TO BE 2310' FNL, 535' FEL.

I HEREBY CERTIFY THAT THIS WELL LOCATION CERTIFICATE WAS PREPARED BY ME OR UNDER MY DIRECT SUPERVISION, THAT THE WORK WAS COMPLETED ON 1/31/2012 FOR AND ON BEHALF OF NOBLE ENERGY, INC., AND THAT THIS MAP DOES NOT REPRESENT A BOUNDARY SURVEY, IT IS NOT A LAND SURVEY PLAT OR AN IMPROVEMENT SURVEY PLAT AND IT IS NOT TO BE RELIED UPON FOR THE ESTABLISHMENT OF FENCE, BUILDING OR OTHER FUTURE IMPROVEMENT LINES.

NOTES:

- 1) BEARINGS FOR THIS MAP ARE ASSUMED AND BASED UPON GPS OBSERVATIONS MADE BETWEEN MONUMENTS LOCATED AT THE NORTHEAST CORNER AND NORTH QUARTER CORNER OF SECTION 1, T.4N., R.66W.
- 2) HORIZONTAL DATUM IS NAD83.
- 3) VERTICAL DATUM IS NAVD88 AND ORIGINATES FROM LOCAL C.O.R.S. STATIONS, UTILIZING THE GEOID09 MODEL.
- 4) SEE LOCATION DRAWING FOR VISIBLE IMPROVEMENTS WITHIN 400' OF PROPOSED DISTURBED AREA.
- 5) SURFACE USE: AGRICULTURAL.

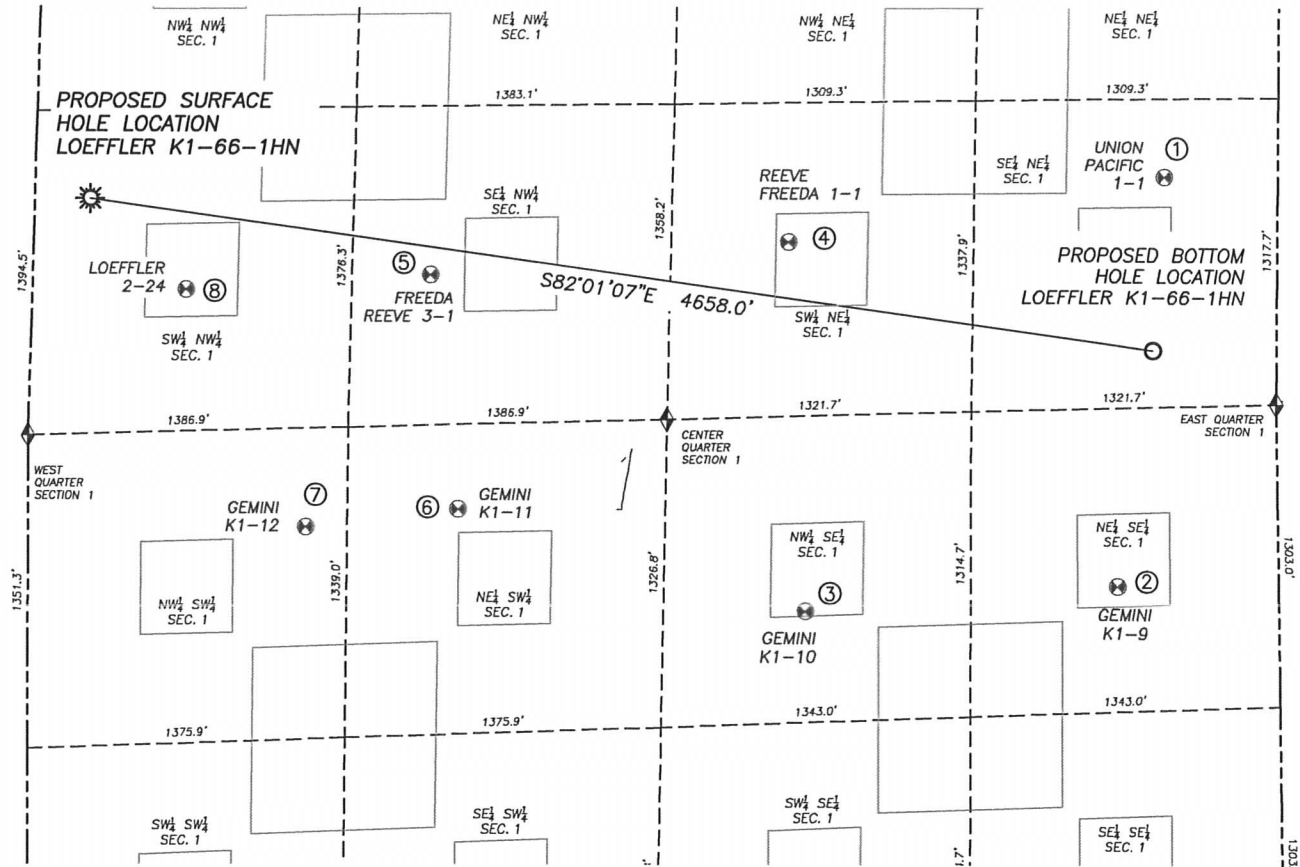
NOTICE: According to Colorado law you MUST commence any legal action based upon any defect in this W.L.C. within three years after you first discover such defect. In no event may any action based upon any such defect in this W.L.C. be commenced more than ten years from the date of the certification shown herein.



FOR AND ON BEHALF OF
DALEY LAND SURVEYING INC.,
Robert Daley, PLS 35597

SITE SKETCH LOEFFLER K1-66-1HN

SECTION 1, TOWNSHIP 4 NORTH, RANGE 66 WEST OF THE 6TH PRINCIPAL MERIDIAN



①

UNION PACIFIC 1-1

SE/NE SEC. 1
 1584' FNL, 490' FEL
 LAT. N40.34417°
 LONG. W104.71732°
 EL: 4692'
 PDOP 1.4

②

GEMINI K1-9

NE/SE SEC. 1
 1847' FSL, 696' FEL
 LAT. N40.33932°
 LONG. W104.71805°
 EL: 4697'
 PDOP 1.8

③

GEMINI K1-10

NW/SE SEC. 1
 1797' FSL, 2055' FEL
 LAT. N40.33902°
 LONG. W104.72292°
 EL: 4705'
 PDOP 1.8

④

REEVE FREEDA 1-1

SW/NE SEC. 1
 1843' FNL, 2120' FEL
 LAT. N40.34339°
 LONG. W104.72318°
 EL: 4673'
 PDOP 1.9

⑤

FREEDA REEVE 3-1

SE/NW SEC. 1
 1982' FNL, 1726' FWL
 LAT. N40.34300°
 LONG. W104.72875°
 EL: 4665'
 PDOP 1.9

⑥

GEMINI K1-11

NE/SW SEC. 1
 2302' FSL, 1866' FWL
 LAT. N40.34023°
 LONG. W104.72832°
 EL: 4684'
 PDOP 1.9

⑦

GEMINI K1-12

NW/SW SEC. 1
 2252' FSL, 1203' FWL
 LAT. N40.34002°
 LONG. W104.73070°
 EL: 4687'
 PDOP 2.1

⑧

LOEFFLER 2-24

SW/NW SEC. 1
 2042' FNL, 667' FWL
 LAT. N40.34282°
 LONG. W104.73255°
 EL: 4666'
 PDOP 2.0

LEGEND

- ◆ FOUND MONUMENT AS DESCRIBED
- ☀ PROPOSED WELL
- ⊙ EXISTING WELL
- BOTTOM HOLE
- ⊘ ABANDONED WELL

NOTES:

1. THIS DOES NOT REPRESENT A BOUNDARY SURVEY
2. HORIZONTAL DATUM IS NAD83
3. VERTICAL DATUM IS NAVD88 AND ORIGINATES FROM LOCAL C.O.R.S. STATIONS, UTILIZING THE GEOID09 MODEL

