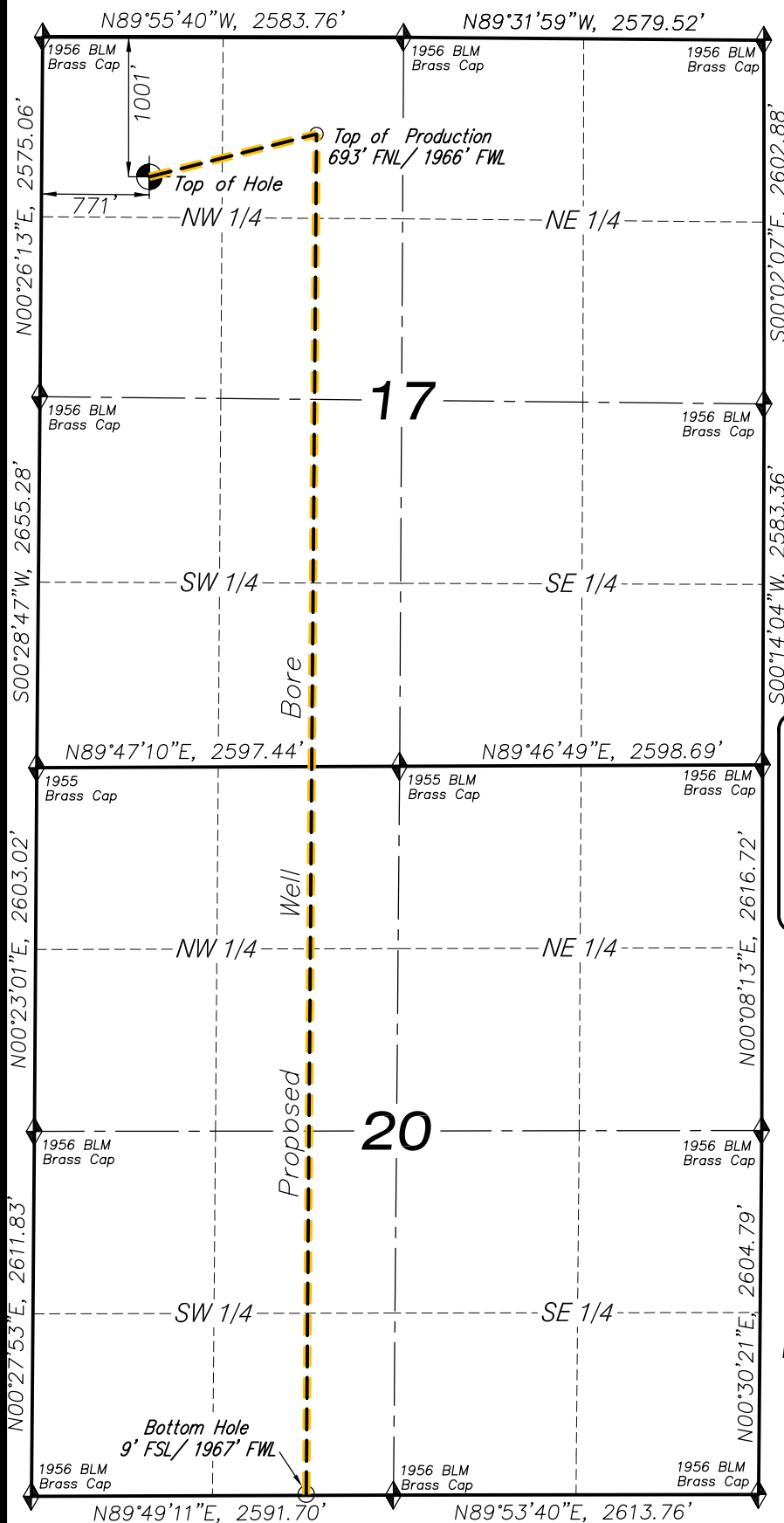


# T9S, R98W, 6TH P.M.

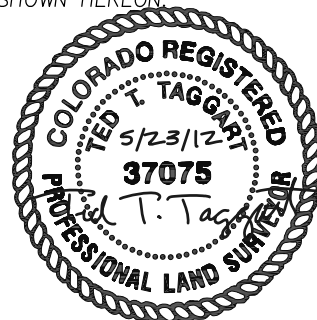


## LEGEND

- SECTION CORNER LOCATED
- SURFACE LOCATION
- BOTTOM HOLE LOCATION
- RECORD LOCATION OF CORNER

## CERTIFICATE OF SURVEYOR

I, TED TAGGART OF FRUITA, COLORADO HEREBY CERTIFY THAT THIS MAP WAS MADE FROM NOTES TAKEN DURING AN ACTUAL SURVEY MADE BY ME OR UNDER MY DIRECTION FOR ENCANA OIL & GAS (USA) INC. AND THAT THIS LOCATION HAS BEEN STAKED ON THE GROUND AS SHOWN HEREON.



## DHS5C-20 (D17 998) WELL

(WELLHEAD LOCATION) NAD 83  
 LATITUDE = 39.277422° N (39°16'38.72000")  
 LONGITUDE = 108.359039° W (108°21'32.54000")  
 (BOTTOM HOLE LOCATION) NAD 83  
 LATITUDE = 39.251547° N (39°15'05.57000")  
 LONGITUDE = 108.355078° W (108°21'18.28000")  
 ELEV. UNGRADED GROUND=5774'

## NOTES

1. WELL FOOTAGES ARE MEASURED AT RIGHT ANGLES TO SECTION LINES.
2. BASIS OF BEARING: GEODETIC- BASED ON GPS OBSERVATIONS.
3. ELEVATIONS BASED ON GPS OBSERVATIONS, NAVD 88 (GEOID 03), POST PROCESSED USING NGS OPUS.
4. SEE ADDENDUM TO LEGAL PLAT (SHEET 1g) FOR VISIBLE IMPROVEMENTS WITHIN 400 FEET OF THE PROPOSED OIL & GAS LOCATION.
5. GPS PROCEDURES COMPLY WITH COGCC RULE NO. 215. PDOP READING: 1.9 GPS OPERATOR: JAY TAGGART

**MAP to ACCOMPANY  
 APPLICATION for PERMIT to DRILL  
 Encana Oil & Gas (USA) Inc.  
 DHS5C-20 (D17 998) Well**

NW1/4 NW1/4, SECTION 17  
 T9S, R98W, 6th P.M.  
 MESA COUNTY, COLORADO

## Location Plat

Project No. 12-04-17  
 Date Drawn: 5/18/12

Scale: 1" = 1200'

Date Surveyed: 3/22/12  
 Latest Revision Date: 5/23/12

SHEET

**1e**  
 OF 10



906 Main Street  
 Evanston, Wyoming 82930  
 Phone No. (307) 789-4545