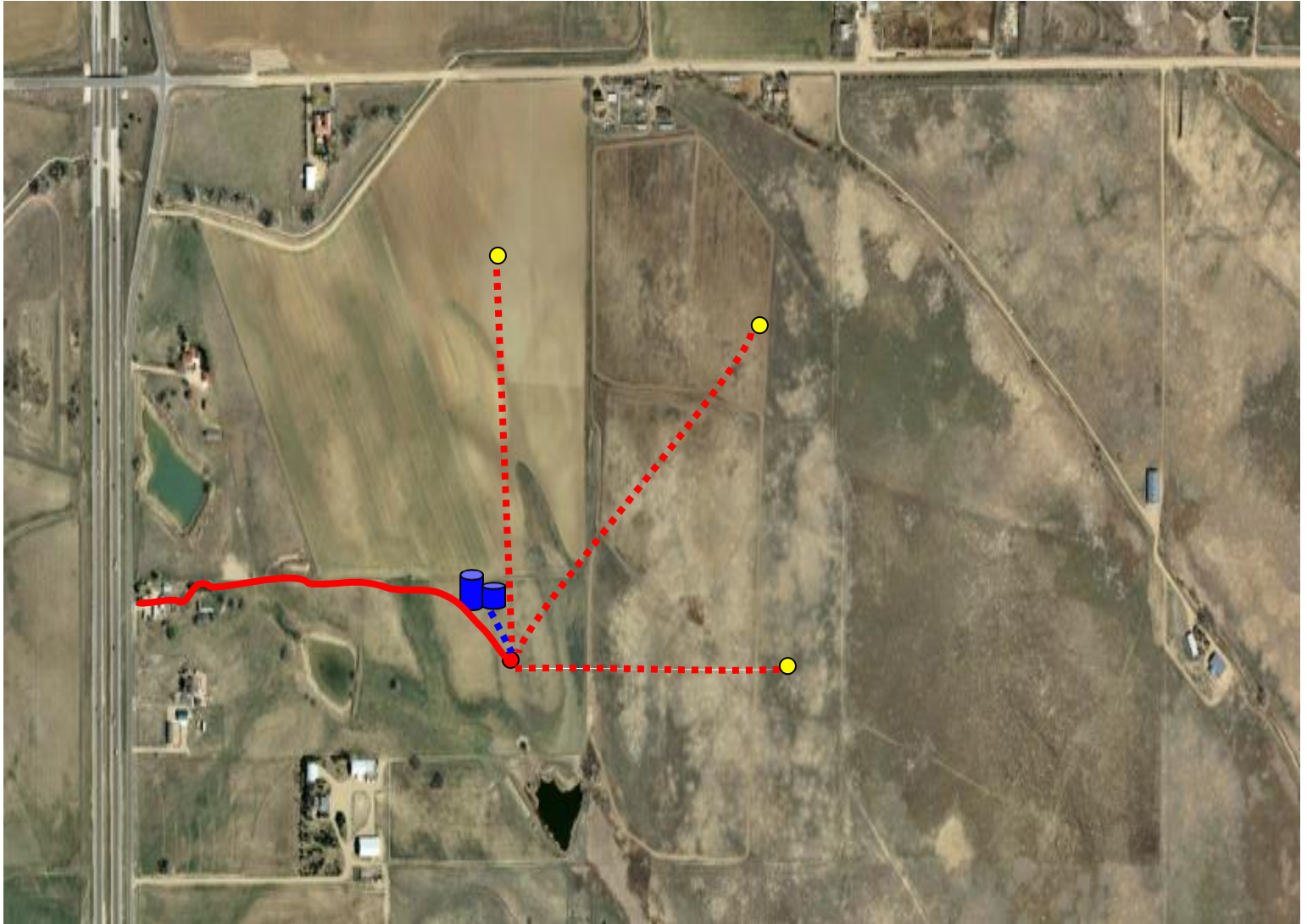







Exhibit "A"  
Township 3 North, Range 68 West, 6<sup>th</sup> P.M.  
Section 2: PT W/2NE/4

Weld County, Colorado



	Permanent Road and Drilling Rig Access
	Flow Lines
	Tank Facility
	<b>FOUR</b> Surface Well Head Location
	Directional Well Bottom Hole Location
	Directional Well Bore

\* All locations are approximate and subject to minor adjustments