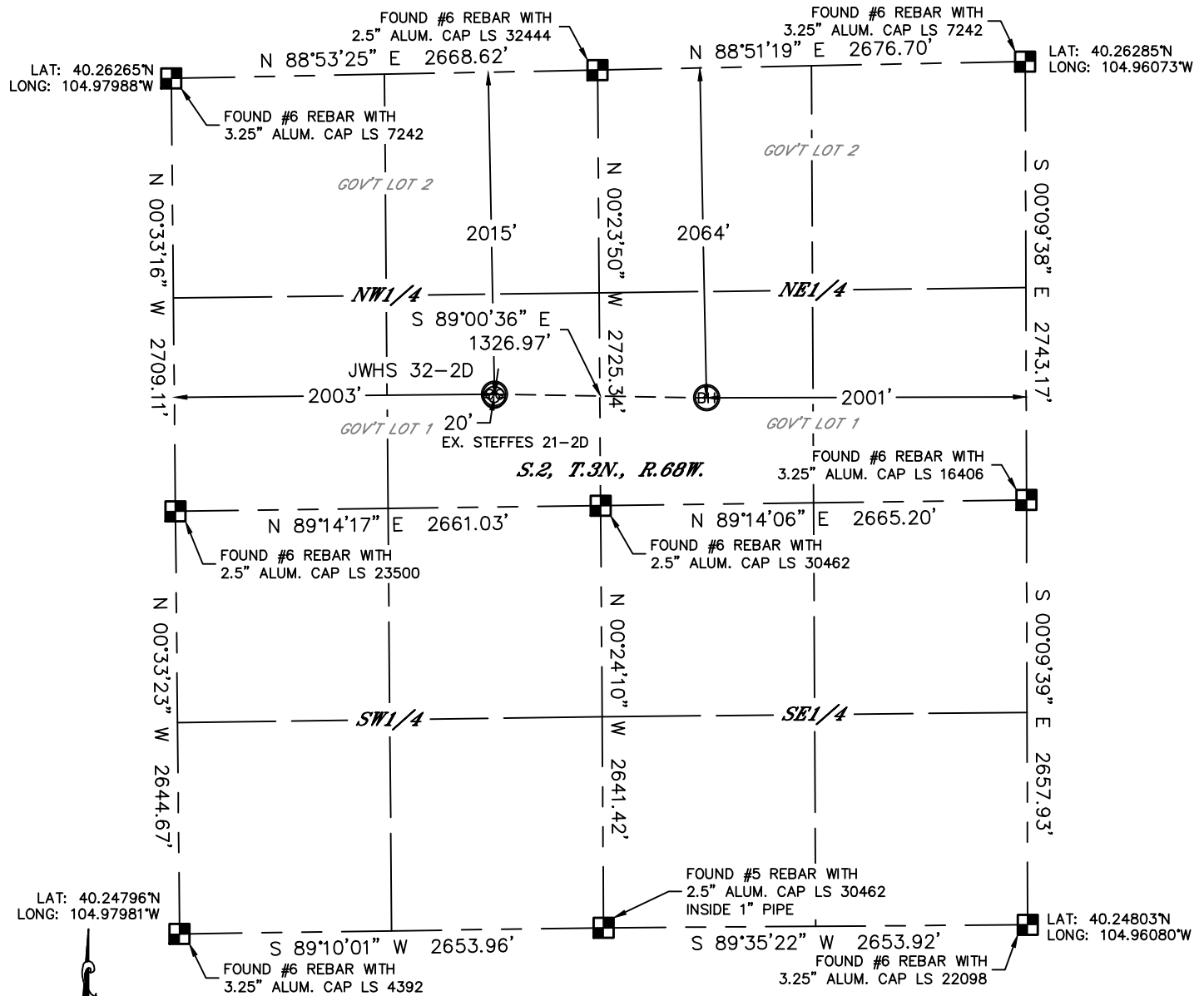


# WELL LOCATION CERTIFICATE

THIS MAP DOES NOT REPRESENT A BOUNDARY SURVEY

SECTION: 2  
TOWNSHIP: 3N  
RANGE: 68W



In accordance with a request from Jesse White with APOLLO OPERATING, LLC. Lat40°, Inc. has determined the surface location of the JWHS 32-2D to be 2015' from the NORTH line and 2003' from the WEST line and the bottom hole to be 2064' from the NORTH line and 2001' from the EAST line as measured at right angles from the section lines of Section 2, Township 3 North, Range 68 West of the Sixth Principal Meridian, County of Weld, State of Colorado.

I hereby state that this Well Location Certificate was prepared by me, or under my direct supervision, that the fieldwork was completed on 5/22/2012, for and on behalf of APOLLO OPERATING, L.L.C. That this is not a Land Survey Plat or an Improvement Survey Plat, and that it is not to be relied upon for establishment of fence, building, or other future improvement lines.

**NOTE:**

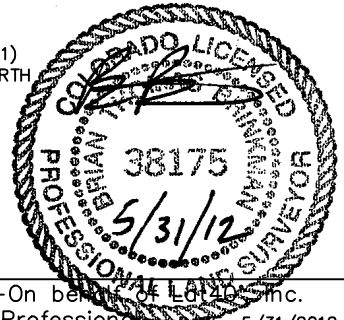
- 1) Bearings shown are Grid Bearings of the Colorado State Plane Coordinate System, North Zone, North American Datum 1983/2007. The lineal dimensions as contained herein are based upon the "U.S. Survey Foot."
- 2) Ground elevations are based on an observed GPS elevation (NAVD 1988 DATUM).
- 3) NEAREST EXISTING WELL: STEFFES 21-2D, 20'
- 4) IMPROVEMENTS: See LOCATION DRAWING for all visible improvements within 400' of disturbed area.
- 5) SURFACE USE: EX. DRILL PAD
- 6) INSTRUMENT OPERATOR: ADAM KELLY

SURFACE LOCATION

LAT: 40.25719°N  
LONG: 104.97268°W  
PDOP: 1.8  
ELEV: 4998'  
1/4,1/4: SE1/4NW1/4 (GOV'T LOT 1)  
NEAREST PROPERTY LINE: 282' NORTH

BOTTOM HOLE



LAT: 40.25711°N  
LONG: 104.96792°W



NOTE

According to Colorado law, you must commence any legal action based upon any defect in this W.L.C. within three years after you discover such defect. In no event, may any action based upon any defect in this survey be commenced more than ten years after the date of the certificate shown hereon. (13-80-105 C.R.S.)

### LEGEND

- LEGEND
-  = ALIQUOT MONUMENT AS DESCRIBED
-  = CALCULATED POSITION

Brian T. Brinkman—On behalf of L&L, Inc.  
Colorado Licensed Professional Land Surveyor No. 38175  
DATE: 5/31/2012  
PROJECT#: 2011113