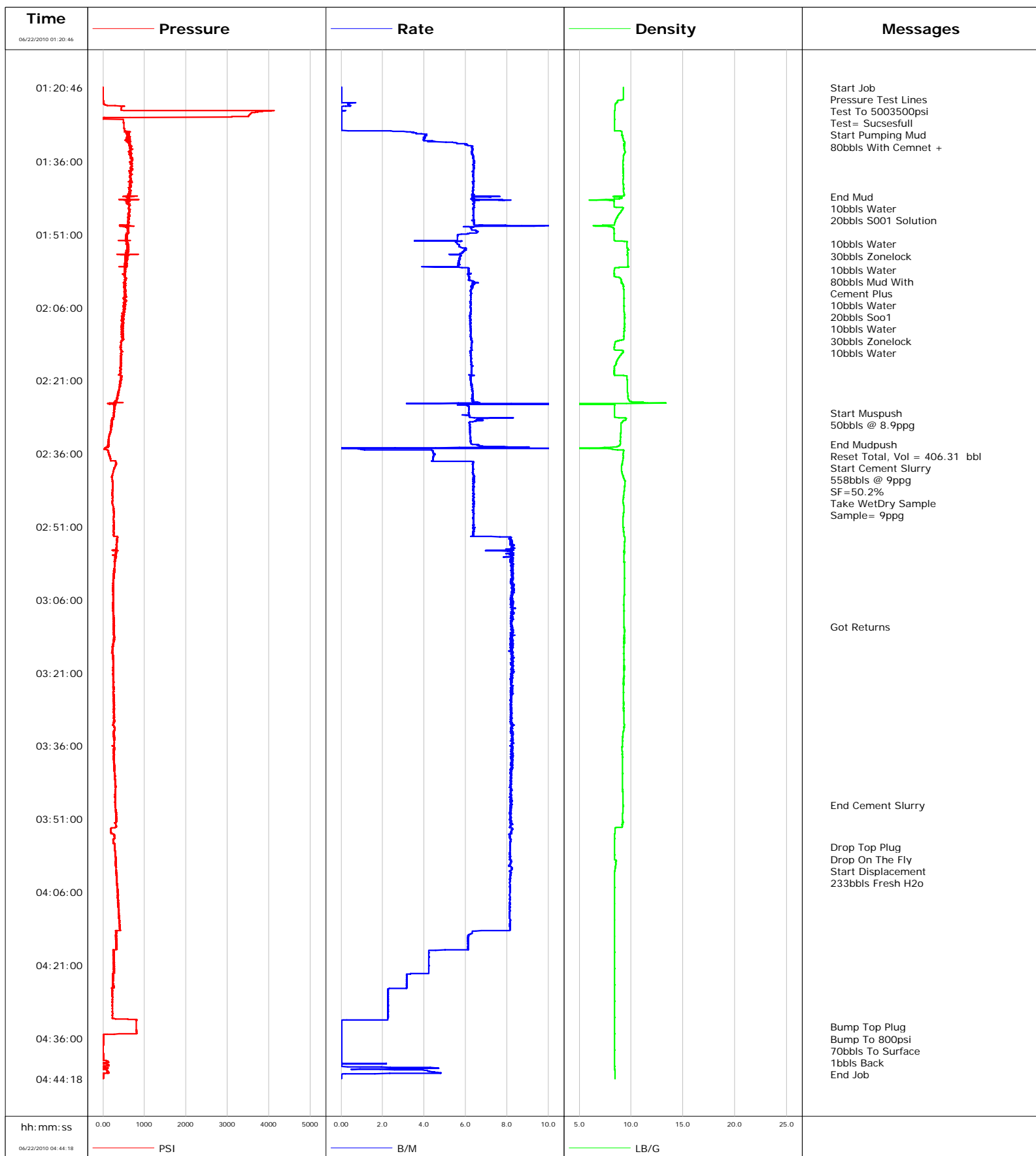


Well SGU 8507D-36
Field N PARACHUTE
Engineer JASON CRICK
Country United States

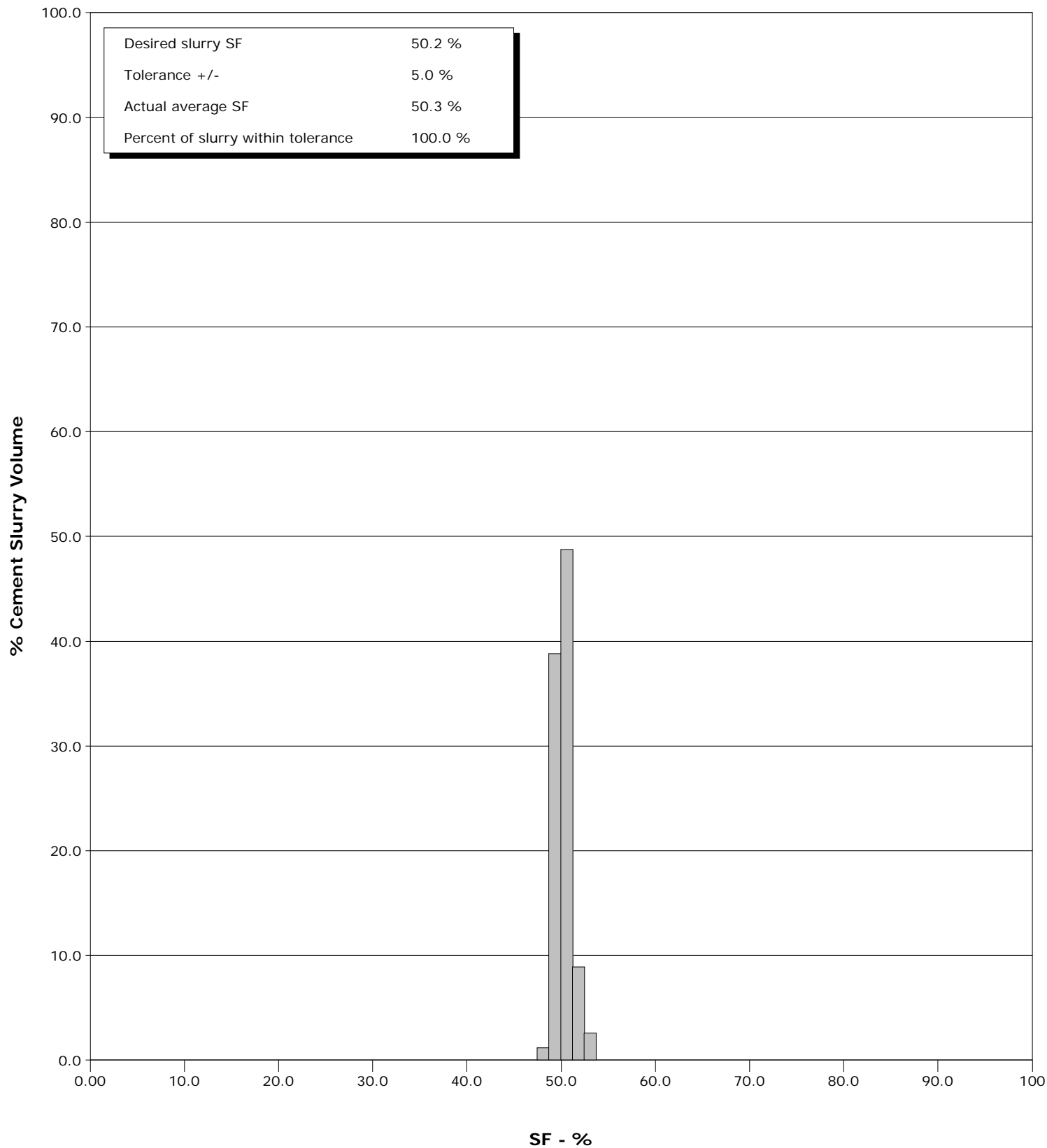
Client ENCANA
SIR No. BAD4-00116
Job Type 9 5/8 SURFACE
Job Date 06-22-2010



Well SGU 8507D-36
Field N PARACHUTE
Engineer JASON CRICK
Country United States

Client ENCANA
SIR No. BAD4-00116
Job Type 9 5/8 SURFACE
Job Date 06-22-2010

Cement Slurry - 06/22/2010 02:37:41 to 06/22/2010 03:48:11





Cementing Service Report

				Customer ENCANA		Job Number BAD4-00116	
Well SGU 8507D-36			Location (legal) GARFIELD		Schlumberger Location GJCO		Job Start Jun/22/2010
Field N PARACHUTE		Formation Name/Type		Deviation	Bit Size 14.8 in	Well MD	Well TVD
County GARFIELD		State/Province Colorado		BHP	BHST	BHCT	Pore Press. Gradient
Well Master 0631190345		API/UWI					
Rig Name PATTERSON 308		Drilled For Gas	Service Via Land	Casing/Liner			
				Depth, ft	Size, in	Weight, lb/ft	Grade
Offshore Zone		Well Class New	Well Type Development	3054.0	9.630	36.0	
				0.0	0.000	0.0	
Drilling Fluid Type		Max. Density	Plastic Viscosity	Tubing/Drill Pipe			
				Depth,	Size,	Weight,	Grade
Service Line Cementing		Job Type 9 5/8 sURFACE					
Max. Allowed Tub. Press		Max. Allowed Ann. Press	WH Connection Single Cement head	Perforations/Open Hole			
				Top,	Bottom,	No. of Shots	Total Interval
							Diameter
				Treat Down Casing	Displacement 232.0 bbl	Packer Type	Packer Depth
				Tubing Vol.	Casing Vol. 234.0 bbl	Annular Vol. 371.0 bbl	Openhole Vol. 607.0 bbl
Casing/Tubing Secured <input checked="" type="checkbox"/>		1 Hole Vol. Circulated prior to Cement <input type="checkbox"/>		Casing Tools		Squeeze Job	
Lift Pressure 1511 psi				Shoe Type Guide		Squeeze Type	
Pipe Rotated <input type="checkbox"/>		Pipe Reciprocated <input type="checkbox"/>		Shoe Depth 3054.0 ft		Tool Type	
No. Centralizers		Top Plugs	Bottom Plugs	Stage Tool Type		Tool Depth	
Cement Head Type				Stage Tool Depth		Tail Pipe Size	
Job Scheduled For Jun/22/2010		Arrived on Location Jun/22/2010	Leave Location Jun/22/2010	Collar Type Diff-Fill		Tail Pipe Depth	
				Collar Depth 3007.0 ft		Sqz. Total Vol.	
Date	Time 24-hr clock	Treating Pressure PSI	Flow Rate B/M	Density LB/G	Volume BBL	Message	
06/22/2010	01:07:32					Started Acquisition	
06/22/2010	01:07:36					Cement 3054'	
06/22/2010	01:07:36					9 5/8" Casing	
06/22/2010	01:07:36					SJ= 3007'	
06/22/2010	01:07:36					Held Safety Meeting	
06/22/2010	01:20:46	-11	0.0	9.26	0.0		
06/22/2010	01:20:48					Start Job	
06/22/2010	01:20:48	-11	0.0	9.26	0.0		
06/22/2010	01:20:50					Pressure Test Lines	
06/22/2010	01:20:50	-11	0.0	9.26	0.0		
06/22/2010	01:20:51					Test To 5003500psi	
06/22/2010	01:20:51					Test= Sucsesfull	
06/22/2010	01:20:51	-11	0.0	9.26	0.0		
06/22/2010	01:21:02	-11	0.0	9.26	0.0		
06/22/2010	01:21:32	-11	0.0	9.26	0.0		
06/22/2010	01:22:02	-11	0.0	9.26	0.0		
06/22/2010	01:22:32	-12	0.0	9.26	0.0		
06/22/2010	01:23:02	-9	0.0	9.26	0.0		
06/22/2010	01:23:32	-7	0.0	8.72	0.0		
06/22/2010	01:24:02	7	0.3	8.55	0.0		
06/22/2010	01:24:32	107	0.4	8.46	0.2		

Well			Field	Job Start		Customer	Job Number
SGU 8507D-36			N PARACHUTE	Jun/22/2010		ENCANA	BAD4-00116
Date	Time 24-hr clock	Treating Pressure PSI	Flow Rate B/M	Density LB/G	Volume BBL	Message	
06/22/2010	01:25:32	504	0.0	8.43	0.3		
06/22/2010	01:26:02	3587	0.0	8.41	0.3		
06/22/2010	01:26:32	3521	0.0	8.42	0.3		
06/22/2010	01:27:02	17	0.0	8.42	0.3		
06/22/2010	01:27:32	493	0.0	8.41	0.3		
06/22/2010	01:28:02	500	0.0	8.42	0.3		
06/22/2010	01:28:32	505	0.0	8.41	0.3		
06/22/2010	01:29:02	510	0.0	8.41	0.3		
06/22/2010	01:29:23					Start Pumping Mud	
06/22/2010	01:29:23	514	0.0	8.41	0.3		
06/22/2010	01:29:24					80bbls With Cemnet +	
06/22/2010	01:29:24	514	0.0	8.41	0.3		
06/22/2010	01:29:32	514	0.0	8.41	0.3		
06/22/2010	01:30:02	583	3.5	9.10	1.2		
06/22/2010	01:30:32	640	4.1	9.10	3.1		
06/22/2010	01:31:02	603	4.0	9.17	5.1		
06/22/2010	01:31:32	640	4.0	9.27	7.1		
06/22/2010	01:32:02	617	5.0	9.37	9.2		
06/22/2010	01:32:32	629	6.0	9.33	12.0		
06/22/2010	01:33:02	653	6.3	9.37	15.1		
06/22/2010	01:33:32	674	6.3	9.36	18.3		
06/22/2010	01:34:02	649	6.3	9.41	21.5		
06/22/2010	01:34:32	655	6.3	9.33	24.6		
06/22/2010	01:35:02	666	6.4	9.26	27.8		
06/22/2010	01:35:32	695	6.4	9.27	31.0		
06/22/2010	01:36:02	663	6.4	9.22	34.2		
06/22/2010	01:36:32	690	6.4	9.23	37.4		
06/22/2010	01:37:02	701	6.4	9.22	40.6		
06/22/2010	01:37:32	662	6.4	9.23	43.8		
06/22/2010	01:38:02	685	6.3	9.25	47.0		
06/22/2010	01:38:32	661	6.4	9.24	50.1		
06/22/2010	01:39:02	658	6.4	9.25	53.3		
06/22/2010	01:39:32	676	6.4	9.24	56.5		
06/22/2010	01:40:02	655	6.4	9.23	59.7		
06/22/2010	01:40:32	665	6.3	9.23	62.9		
06/22/2010	01:41:02	651	6.4	9.26	66.1		
06/22/2010	01:41:32	655	6.3	9.29	69.3		
06/22/2010	01:42:02	653	6.4	9.27	72.4		
06/22/2010	01:42:32	669	6.3	9.31	75.6		
06/22/2010	01:43:02	602	6.3	9.37	78.8		
06/22/2010	01:43:16					End Mud	
06/22/2010	01:43:16	747	7.0	8.28	80.4		
06/22/2010	01:43:19					10bbls Water	
06/22/2010	01:43:19	591	7.2	8.62	80.7		
06/22/2010	01:43:32	605	6.4	9.11	82.1		
06/22/2010	01:44:02	596	6.3	8.26	85.5		
06/22/2010	01:44:32	604	6.4	8.38	88.7		
06/22/2010	01:45:02					20bbls S001 Solution	
06/22/2010	01:45:02	659	6.4	8.37	91.9		
06/22/2010	01:45:32	612	6.4	9.24	95.1		
06/22/2010	01:46:02	634	6.4	9.10	98.3		
06/22/2010	01:46:32	637	6.4	8.97	101.5		
06/22/2010	01:47:02	615	6.4	8.77	104.7		
06/22/2010	01:47:32	609	6.4	8.63	107.9		

Well			Field		Job Start		Customer		Job Number	
SGU 8507D-36			N PARACHUTE		Jun/22/2010		ENCANA		BAD4-00116	
Date	Time 24-hr clock	Treating Pressure PSI	Flow Rate B/M	Density LB/G	Volume BBL	Message				
06/22/2010	01:48:32	629	6.4	8.44	114.3					
06/22/2010	01:49:02	595	6.4	8.43	117.5					
06/22/2010	01:49:32	615	6.2	8.18	121.1					
06/22/2010	01:50:02	599	6.3	8.34	124.3					
06/22/2010	01:50:32	626	6.6	8.37	127.5					
06/22/2010	01:51:02	560	5.6	8.37	130.6					
06/22/2010	01:51:32	587	5.6	8.37	133.4					
06/22/2010	01:52:02	575	5.6	8.37	136.2					
06/22/2010	01:52:32	590	5.5	9.62	138.9					
06/22/2010	01:52:55					10bbls Water				
06/22/2010	01:52:55					30bbls Zonelock				
06/22/2010	01:52:55	609	5.6	9.58	141.1					
06/22/2010	01:53:02	567	5.6	9.60	141.7					
06/22/2010	01:53:32	611	5.7	9.61	144.6					
06/22/2010	01:54:02	593	5.9	9.68	147.5					
06/22/2010	01:54:32	605	5.9	9.66	150.5					
06/22/2010	01:55:32	575	5.7	9.67	156.3					
06/22/2010	01:56:02	549	5.7	9.68	159.1					
06/22/2010	01:56:32	546	5.7	9.67	162.0					
06/22/2010	01:57:02	552	5.7	9.68	164.8					
06/22/2010	01:57:32	538	5.7	9.68	167.6					
06/22/2010	01:58:02	534	6.1	8.39	170.5					
06/22/2010	01:58:14					10bbls Water				
06/22/2010	01:58:14	552	6.1	8.39	171.7					
06/22/2010	01:58:22					80bbls Mud With				
06/22/2010	01:58:22	530	6.1	8.38	172.5					
06/22/2010	01:58:23					Cement Plus				
06/22/2010	01:58:23					10bbls Water				
06/22/2010	01:58:23					20bbls Soo1				
06/22/2010	01:58:23	523	6.1	8.38	172.6					
06/22/2010	01:58:24					10bbls Water				
06/22/2010	01:58:24	519	6.2	8.38	172.7					
06/22/2010	01:58:32	527	6.1	8.38	173.5					
06/22/2010	01:59:02	524	6.1	8.38	176.6					
06/22/2010	01:59:17					30bbls Zonelock				
06/22/2010	01:59:17					10bbls Water				
06/22/2010	01:59:17	527	6.1	8.36	178.1					
06/22/2010	01:59:32	514	6.1	8.37	179.7					
06/22/2010	02:00:02	565	6.2	8.96	182.8					
06/22/2010	02:00:32	546	6.3	9.05	185.9					
06/22/2010	02:01:02	532	6.3	9.13	189.1					
06/22/2010	02:01:32	550	6.3	9.22	192.2					
06/22/2010	02:02:02	515	6.3	9.25	195.4					
06/22/2010	02:02:32	530	6.3	9.30	198.5					
06/22/2010	02:03:02	523	6.2	9.29	201.7					
06/22/2010	02:03:32	539	6.3	9.32	204.8					
06/22/2010	02:04:02	527	6.3	9.33	207.9					
06/22/2010	02:04:32	520	6.2	9.30	211.0					
06/22/2010	02:05:02	499	6.2	9.30	214.2					
06/22/2010	02:05:32	496	6.3	9.31	217.3					
06/22/2010	02:06:02	521	6.2	9.31	220.4					
06/22/2010	02:06:32	503	6.3	9.31	223.5					
06/22/2010	02:07:02	494	6.3	9.35	226.7					
06/22/2010	02:07:32	483	6.2	9.35	229.8					

Well			Field		Job Start	Customer	Job Number
SGU 8507D-36			N PARACHUTE		Jun/22/2010	ENCANA	BAD4-00116
Date	Time 24-hr clock	Treating Pressure PSI	Flow Rate B/M	Density LB/G	Volume BBL	Message	
06/22/2010	02:08:32	477	6.2	9.37	236.0		
06/22/2010	02:09:02	468	6.3	9.35	239.1		
06/22/2010	02:09:32	488	6.2	9.37	242.2		
06/22/2010	02:10:02	471	6.2	9.38	245.4		
06/22/2010	02:10:32	474	6.3	9.35	248.5		
06/22/2010	02:11:02	448	6.3	9.31	251.6		
06/22/2010	02:11:32	481	6.2	9.30	254.7		
06/22/2010	02:12:02	449	6.2	9.29	257.9		
06/22/2010	02:12:32	475	6.3	9.29	261.0		
06/22/2010	02:13:02	435	6.3	8.50	264.1		
06/22/2010	02:13:32	445	6.3	8.43	267.3		
06/22/2010	02:14:02	429	6.3	8.39	270.4		
06/22/2010	02:14:32	437	6.3	8.38	273.6		
06/22/2010	02:15:02	443	6.3	9.28	276.7		
06/22/2010	02:15:32	439	6.3	9.09	279.8		
06/22/2010	02:16:02	428	6.3	8.90	283.0		
06/22/2010	02:16:32	426	6.3	8.75	286.1		
06/22/2010	02:17:02	422	6.3	8.62	289.2		
06/22/2010	02:17:32	432	6.3	8.56	292.4		
06/22/2010	02:18:02	432	6.3	8.38	295.5		
06/22/2010	02:18:32	416	6.3	8.38	298.6		
06/22/2010	02:19:02	417	6.3	8.38	301.8		
06/22/2010	02:19:32	415	6.3	8.38	304.9		
06/22/2010	02:20:02	427	6.3	9.54	308.1		
06/22/2010	02:20:32	432	6.2	9.61	311.2		
06/22/2010	02:21:02	423	6.3	9.62	314.3		
06/22/2010	02:21:32	431	6.3	9.63	317.5		
06/22/2010	02:22:02	413	6.3	9.64	320.6		
06/22/2010	02:22:32	385	6.3	9.64	323.7		
06/22/2010	02:23:02	382	6.3	9.65	326.9		
06/22/2010	02:23:32	369	6.3	9.67	330.1		
06/22/2010	02:24:02	366	6.3	9.68	333.3		
06/22/2010	02:24:32	339	6.3	9.70	336.4		
06/22/2010	02:25:02	324	6.4	9.83	339.6		
06/22/2010	02:25:32	297	6.6	11.15	342.8		
06/22/2010	02:26:02	254	5.7	8.46	348.9		
06/22/2010	02:26:32	275	6.2	8.39	352.0		
06/22/2010	02:27:02	273	6.2	8.38	355.0		
06/22/2010	02:27:32	263	6.2	8.38	358.1		
06/22/2010	02:27:41					Start Muspush	
06/22/2010	02:27:41					50bbls @ 8.9ppg	
06/22/2010	02:27:41	256	6.1	8.38	359.0		
06/22/2010	02:28:02	264	6.2	8.38	361.2		
06/22/2010	02:28:32	259	6.2	8.39	364.3		
06/22/2010	02:29:02	217	6.5	9.50	367.7		
06/22/2010	02:29:32	209	6.2	9.14	370.9		
06/22/2010	02:30:02	218	6.2	9.03	374.0		
06/22/2010	02:30:32	206	6.2	9.04	377.1		
06/22/2010	02:31:02	192	6.2	9.02	380.2		
06/22/2010	02:31:32	181	6.2	9.02	383.3		
06/22/2010	02:32:02	163	6.2	9.00	386.5		
06/22/2010	02:32:32	151	6.2	8.98	389.6		
06/22/2010	02:33:02	137	6.2	8.97	392.7		
06/22/2010	02:33:32	134	6.2	8.96	395.8		

Well			Field		Job Start		Customer		Job Number	
SGU 8507D-36			N PARACHUTE		Jun/22/2010		ENCANA		BAD4-00116	
Date	Time 24-hr clock	Treating Pressure PSI	Flow Rate B/M	Density LB/G	Volume BBL	Message				
06/22/2010	02:34:02	132	6.3	8.96	398.9					
06/22/2010	02:34:32	122	6.9	8.76	402.2					
06/22/2010	02:35:02	42	0.9	8.17	404.8					
06/22/2010	02:35:32					Reset Total, Vol = 406.31 bbl				
06/22/2010	02:35:32	121	4.4	9.28	406.3					
06/22/2010	02:36:02	141	4.5	9.23	408.5					
06/22/2010	02:36:32	164	4.4	9.25	410.8					
06/22/2010	02:37:02	183	4.4	9.23	413.0					
06/22/2010	02:37:32	302	4.4	9.19	415.2					
06/22/2010	02:37:41					Start Cement Slurry				
06/22/2010	02:37:41	309	6.4	9.17	416.1					
06/22/2010	02:37:44					558bbls @ 9ppg				
06/22/2010	02:37:44					SF=50.2%				
06/22/2010	02:37:44					Take WetDry Sample				
06/22/2010	02:37:44					Sample= 9ppg				
06/22/2010	02:37:44	304	6.4	9.16	416.4					
06/22/2010	02:38:02	310	6.4	9.13	418.3					
06/22/2010	02:38:32	303	6.3	9.08	421.5					
06/22/2010	02:39:02	278	6.3	9.06	424.6					
06/22/2010	02:39:32	257	6.4	9.08	427.8					
06/22/2010	02:40:02	245	6.3	9.13	431.0					
06/22/2010	02:40:32	229	6.4	9.23	434.2					
06/22/2010	02:41:02	219	6.4	9.27	437.4					
06/22/2010	02:41:32	234	6.4	9.38	440.6					
06/22/2010	02:42:02	239	6.4	9.39	443.8					
06/22/2010	02:42:32	242	6.4	9.38	447.0					
06/22/2010	02:43:02	239	6.4	9.37	450.1					
06/22/2010	02:43:32	225	6.4	9.34	453.3					
06/22/2010	02:44:02	235	6.4	9.31	456.5					
06/22/2010	02:44:32	225	6.4	9.29	459.7					
06/22/2010	02:45:02	239	6.4	9.26	462.9					
06/22/2010	02:45:32	231	6.4	9.24	466.1					
06/22/2010	02:46:02	225	6.4	9.23	469.3					
06/22/2010	02:46:32	231	6.4	9.28	472.5					
06/22/2010	02:47:02	251	6.4	9.30	475.7					
06/22/2010	02:47:32	249	6.4	9.32	478.9					
06/22/2010	02:48:02	274	6.4	9.29	482.1					
06/22/2010	02:48:32	271	6.4	9.28	485.2					
06/22/2010	02:49:02	261	6.4	9.24	488.4					
06/22/2010	02:49:32	260	6.4	9.21	491.6					
06/22/2010	02:50:02	257	6.4	9.20	494.8					
06/22/2010	02:50:32	259	6.4	9.21	498.0					
06/22/2010	02:51:02	262	6.4	9.23	501.2					
06/22/2010	02:51:32	260	6.4	9.25	504.4					
06/22/2010	02:52:02	250	6.4	9.29	507.6					
06/22/2010	02:52:32	268	6.3	9.31	510.8					
06/22/2010	02:53:02	327	6.5	9.34	513.9					
06/22/2010	02:53:32	348	8.2	9.39	518.0					
06/22/2010	02:54:02	350	8.2	9.38	522.1					
06/22/2010	02:54:32	327	8.2	9.36	526.2					
06/22/2010	02:55:02	327	8.2	9.37	530.3					
06/22/2010	02:55:32	318	8.2	9.36	534.4					
06/22/2010	02:56:02	316	8.2	9.34	538.3					
06/22/2010	02:56:32	310	8.1	9.34	542.4					

Well			Field		Job Start		Customer		Job Number	
SGU 8507D-36			N PARACHUTE		Jun/22/2010		ENCANA		BAD4-00116	
Date	Time 24-hr clock	Treating Pressure PSI	Flow Rate B/M	Density LB/G	Volume BBL	Message				
06/22/2010	02:57:32	308	8.3	9.31	550.6					
06/22/2010	02:58:02	288	8.2	9.33	554.7					
06/22/2010	02:58:32	282	8.3	9.34	558.9					
06/22/2010	02:59:02	285	8.2	9.34	563.0					
06/22/2010	02:59:32	276	8.2	9.35	567.1					
06/22/2010	03:00:02	272	8.2	9.37	571.2					
06/22/2010	03:00:32	268	8.2	9.36	575.3					
06/22/2010	03:01:02	267	8.2	9.36	579.5					
06/22/2010	03:01:32	263	8.3	9.37	583.6					
06/22/2010	03:02:02	250	8.2	9.36	587.7					
06/22/2010	03:02:32	252	8.2	9.35	591.8					
06/22/2010	03:03:02	250	8.2	9.35	595.9					
06/22/2010	03:03:32	246	8.2	9.35	600.1					
06/22/2010	03:04:02	248	8.2	9.37	604.2					
06/22/2010	03:04:32	252	8.3	9.36	608.3					
06/22/2010	03:05:02	253	8.2	9.34	612.5					
06/22/2010	03:05:32	257	8.2	9.32	616.6					
06/22/2010	03:06:02	249	8.2	9.31	620.7					
06/22/2010	03:06:32	252	8.3	9.30	624.8					
06/22/2010	03:07:02	255	8.2	9.28	628.9					
06/22/2010	03:07:32	255	8.2	9.30	633.0					
06/22/2010	03:08:02	255	8.2	9.30	637.2					
06/22/2010	03:08:32	245	8.2	9.31	641.3					
06/22/2010	03:09:02	250	8.3	9.31	645.4					
06/22/2010	03:09:32	252	8.2	9.32	649.5					
06/22/2010	03:10:02	257	8.3	9.33	653.7					
06/22/2010	03:10:32	258	8.2	9.32	657.8					
06/22/2010	03:11:02	254	8.2	9.32	661.9					
06/22/2010	03:11:29					Got Returns				
06/22/2010	03:11:29	260	8.2	9.32	665.6					
06/22/2010	03:11:32	259	8.2	9.32	666.0					
06/22/2010	03:12:02	267	8.2	9.36	670.1					
06/22/2010	03:12:32	266	8.3	9.38	674.2					
06/22/2010	03:13:02	262	8.2	9.36	678.3					
06/22/2010	03:13:32	279	8.3	9.33	682.5					
06/22/2010	03:14:02	270	8.2	9.33	686.6					
06/22/2010	03:14:32	256	8.2	9.33	690.7					
06/22/2010	03:15:02	242	8.3	9.30	694.8					
06/22/2010	03:15:32	242	8.2	9.30	698.9					
06/22/2010	03:16:02	240	8.2	9.31	703.0					
06/22/2010	03:16:32	236	8.2	9.30	707.1					
06/22/2010	03:17:02	237	8.3	9.28	711.2					
06/22/2010	03:17:32	242	8.3	9.31	715.3					
06/22/2010	03:18:02	246	8.2	9.31	719.5					
06/22/2010	03:18:32	254	8.2	9.31	723.6					
06/22/2010	03:19:02	250	8.2	9.31	727.7					
06/22/2010	03:19:32	254	8.2	9.33	731.8					
06/22/2010	03:20:02	255	8.3	9.33	735.9					
06/22/2010	03:20:32	252	8.2	9.33	740.1					
06/22/2010	03:21:02	253	8.3	9.32	744.2					
06/22/2010	03:21:32	255	8.2	9.30	748.3					
06/22/2010	03:22:02	252	8.2	9.29	752.4					
06/22/2010	03:22:32	247	8.2	9.28	756.5					
06/22/2010	03:23:02	251	8.2	9.28	760.6					

Well			Field		Job Start		Customer		Job Number	
SGU 8507D-36			N PARACHUTE		Jun/22/2010		ENCANA		BAD4-00116	
Date	Time 24-hr clock	Treating Pressure PSI	Flow Rate B/M	Density LB/G	Volume BBL	Message				
06/22/2010	03:24:02	250	8.2	9.27	768.8					
06/22/2010	03:24:32	253	8.2	9.26	773.0					
06/22/2010	03:25:02	249	8.2	9.25	777.1					
06/22/2010	03:25:32	251	8.2	9.25	781.2					
06/22/2010	03:26:02	255	8.2	9.26	785.3					
06/22/2010	03:26:32	257	8.2	9.27	789.4					
06/22/2010	03:27:02	267	8.2	9.29	793.5					
06/22/2010	03:27:32	265	8.2	9.29	797.6					
06/22/2010	03:28:02	262	8.2	9.28	801.6					
06/22/2010	03:28:32	258	8.2	9.28	805.7					
06/22/2010	03:29:02	260	8.2	9.29	809.8					
06/22/2010	03:29:32	269	8.2	9.29	813.9					
06/22/2010	03:30:02	265	8.2	9.29	818.0					
06/22/2010	03:30:32	264	8.2	9.30	822.1					
06/22/2010	03:31:02	276	8.2	9.30	826.2					
06/22/2010	03:31:32	258	8.2	9.33	830.3					
06/22/2010	03:32:02	276	8.3	9.34	834.4					
06/22/2010	03:32:32	290	8.2	9.33	838.6					
06/22/2010	03:33:02	267	8.2	9.27	842.7					
06/22/2010	03:33:32	261	8.3	9.21	846.8					
06/22/2010	03:34:02	262	8.3	9.20	850.9					
06/22/2010	03:34:32	280	8.2	9.18	855.0					
06/22/2010	03:35:02	272	8.3	9.18	859.1					
06/22/2010	03:35:32	269	8.2	9.16	863.3					
06/22/2010	03:36:02	271	8.3	9.15	867.4					
06/22/2010	03:36:32	278	8.2	9.14	871.5					
06/22/2010	03:37:02	266	8.2	9.14	875.6					
06/22/2010	03:37:32	264	8.3	9.15	879.7					
06/22/2010	03:38:02	266	8.2	9.15	883.8					
06/22/2010	03:38:32	263	8.2	9.15	887.9					
06/22/2010	03:39:02	264	8.3	9.16	892.1					
06/22/2010	03:39:32	269	8.2	9.16	896.2					
06/22/2010	03:40:02	276	8.2	9.16	900.3					
06/22/2010	03:40:32	281	8.3	9.16	904.4					
06/22/2010	03:41:02	276	8.2	9.16	908.5					
06/22/2010	03:41:32	280	8.2	9.16	912.6					
06/22/2010	03:42:02	293	8.2	9.16	916.7					
06/22/2010	03:42:32	294	8.2	9.17	920.8					
06/22/2010	03:43:02	296	8.2	9.16	924.9					
06/22/2010	03:43:32	297	8.2	9.17	929.0					
06/22/2010	03:44:02	301	8.2	9.17	933.1					
06/22/2010	03:44:32	310	8.1	9.18	937.1					
06/22/2010	03:45:02	301	8.2	9.18	941.2					
06/22/2010	03:45:32	302	8.2	9.20	945.3					
06/22/2010	03:46:02	304	8.2	9.21	949.4					
06/22/2010	03:46:32	293	8.2	9.22	953.5					
06/22/2010	03:47:02	297	8.1	9.22	957.6					
06/22/2010	03:47:32	296	8.2	9.23	961.7					
06/22/2010	03:48:02	296	8.2	9.23	965.8					
06/22/2010	03:48:11					End Cement Slurry				
06/22/2010	03:48:11	297	8.2	9.23	967.0					
06/22/2010	03:48:32	294	8.2	9.23	969.9					
06/22/2010	03:49:02	308	8.1	9.21	974.0					
06/22/2010	03:49:32	313	8.2	9.20	978.0					

Well			Field		Job Start		Customer		Job Number	
SGU 8507D-36			N PARACHUTE		Jun/22/2010		ENCANA		BAD4-00116	
Date	Time 24-hr clock	Treating Pressure PSI	Flow Rate B/M	Density LB/G	Volume BBL	Message				
06/22/2010	03:50:32	326	8.2	9.18	986.2					
06/22/2010	03:51:02	318	8.2	9.18	990.3					
06/22/2010	03:51:32	326	8.2	9.23	994.4					
06/22/2010	03:52:02	304	8.2	9.19	998.4					
06/22/2010	03:52:32	316	8.2	9.16	1002.5					
06/22/2010	03:53:02	190	8.3	8.44	1006.6					
06/22/2010	03:53:32	197	8.2	8.45	1010.7					
06/22/2010	03:54:02	196	8.2	8.43	1014.8					
06/22/2010	03:54:32	273	8.1	8.43	1018.9					
06/22/2010	03:55:02	272	8.1	8.43	1023.0					
06/22/2010	03:55:32	255	8.2	8.43	1027.1					
06/22/2010	03:56:02	279	8.1	8.42	1031.1					
06/22/2010	03:56:32	276	8.1	8.42	1035.2					
06/22/2010	03:56:47					Drop Top Plug				
06/22/2010	03:56:47					Drop On The Fly				
06/22/2010	03:56:47	282	8.1	8.42	1037.2					
06/22/2010	03:56:49					Start Displacement				
06/22/2010	03:56:49	288	8.1	8.42	1037.5					
06/22/2010	03:56:50					233bbls Fresh H2o				
06/22/2010	03:56:50	288	8.1	8.42	1037.7					
06/22/2010	03:57:02	277	8.1	8.42	1039.3					
06/22/2010	03:57:32	290	8.1	8.42	1043.4					
06/22/2010	03:58:02	293	8.1	8.42	1047.4					
06/22/2010	03:58:32	297	8.1	8.42	1051.5					
06/22/2010	03:59:02	303	8.1	8.42	1055.6					
06/22/2010	03:59:32	303	8.2	8.55	1059.6					
06/22/2010	04:00:02	312	8.2	8.52	1063.7					
06/22/2010	04:00:32	306	8.1	8.49	1067.8					
06/22/2010	04:01:02	315	8.2	8.48	1071.9					
06/22/2010	04:01:32	320	8.2	8.47	1076.0					
06/22/2010	04:02:02	321	8.2	8.42	1080.1					
06/22/2010	04:03:02	333	8.1	8.42	1088.2					
06/22/2010	04:03:32	331	8.2	8.42	1092.3					
06/22/2010	04:04:02	333	8.1	8.42	1096.4					
06/22/2010	04:04:32	344	8.1	8.42	1100.4					
06/22/2010	04:05:02	352	8.1	8.42	1104.5					
06/22/2010	04:05:32	347	8.1	8.42	1108.6					
06/22/2010	04:06:02	362	8.1	8.42	1112.6					
06/22/2010	04:06:32	362	8.1	8.42	1116.7					
06/22/2010	04:07:02	360	8.1	8.42	1120.8					
06/22/2010	04:07:32	367	8.1	8.42	1124.8					
06/22/2010	04:08:02	372	8.1	8.42	1128.9					
06/22/2010	04:08:32	370	8.1	8.42	1133.0					
06/22/2010	04:09:02	370	8.1	8.42	1137.0					
06/22/2010	04:09:32	375	8.1	8.42	1141.1					
06/22/2010	04:10:02	375	8.1	8.42	1145.2					
06/22/2010	04:10:32	388	8.1	8.42	1149.2					
06/22/2010	04:11:02	393	8.1	8.42	1153.3					
06/22/2010	04:11:32	388	8.1	8.42	1157.3					
06/22/2010	04:12:02	389	8.1	8.42	1161.4					
06/22/2010	04:12:32	400	8.1	8.42	1165.5					
06/22/2010	04:13:02	391	8.1	8.42	1169.5					
06/22/2010	04:13:32	397	8.1	8.42	1173.6					
06/22/2010	04:14:02	335	6.3	8.42	1177.5					

Well			Field		Job Start		Customer		Job Number	
SGU 8507D-36			N PARACHUTE		Jun/22/2010		ENCANA		BAD4-00116	
Date	Time 24-hr clock	Treating Pressure PSI	Flow Rate B/M	Density LB/G	Volume BBL	Message				
06/22/2010	04:15:02	316	6.1	8.42	1183.8					
06/22/2010	04:15:32	312	6.1	8.42	1186.8					
06/22/2010	04:16:02	313	6.1	8.42	1189.9					
06/22/2010	04:16:32	327	6.1	8.42	1192.9					
06/22/2010	04:17:02	340	6.1	8.42	1196.0					
06/22/2010	04:17:32	330	6.1	8.42	1199.1					
06/22/2010	04:18:02	247	4.2	8.42	1201.9					
06/22/2010	04:18:32	256	4.2	8.42	1204.0					
06/22/2010	04:19:02	249	4.2	8.42	1206.1					
06/22/2010	04:19:32	256	4.2	8.42	1208.3					
06/22/2010	04:20:02	262	4.2	8.42	1210.4					
06/22/2010	04:20:32	262	4.2	8.42	1212.5					
06/22/2010	04:21:02	261	4.2	8.42	1214.6					
06/22/2010	04:21:32	257	4.2	8.42	1216.7					
06/22/2010	04:22:02	279	4.2	8.42	1218.8					
06/22/2010	04:22:32	266	4.2	8.42	1220.9					
06/22/2010	04:23:02	255	3.2	8.42	1222.8					
06/22/2010	04:23:32	246	3.2	8.42	1224.4					
06/22/2010	04:24:02	231	3.2	8.42	1226.0					
06/22/2010	04:24:32	237	3.2	8.42	1227.6					
06/22/2010	04:25:02	239	3.2	8.42	1229.1					
06/22/2010	04:25:32	233	3.2	8.42	1230.7					
06/22/2010	04:26:02	225	2.3	8.42	1232.1					
06/22/2010	04:26:32	229	2.3	8.42	1233.2					
06/22/2010	04:27:02	233	2.3	8.42	1234.3					
06/22/2010	04:27:32	234	2.3	8.42	1235.5					
06/22/2010	04:28:02	227	2.3	8.42	1236.6					
06/22/2010	04:28:32	227	2.3	8.42	1237.7					
06/22/2010	04:29:02	227	2.3	8.42	1238.9					
06/22/2010	04:29:32	233	2.3	8.42	1240.0					
06/22/2010	04:30:02	233	2.3	8.42	1241.1					
06/22/2010	04:30:32	233	2.3	8.42	1242.3					
06/22/2010	04:31:02	232	2.3	8.42	1243.4					
06/22/2010	04:31:32	233	2.3	8.42	1244.5					
06/22/2010	04:32:02	307	2.3	8.42	1245.6					
06/22/2010	04:32:32	804	0.0	8.42	1246.2					
06/22/2010	04:33:02	806	0.0	8.42	1246.2					
06/22/2010	04:33:32	807	0.0	8.42	1246.2					
06/22/2010	04:33:42					Bump Top Plug				
06/22/2010	04:33:42	808	0.0	8.42	1246.2					
06/22/2010	04:33:43					Bump To 800psi				
06/22/2010	04:33:43	808	0.0	8.42	1246.2					
06/22/2010	04:33:56					70bbbls To Surface				
06/22/2010	04:33:56	808	0.0	8.42	1246.2					
06/22/2010	04:34:02	808	0.0	8.42	1246.2					
06/22/2010	04:34:32	809	0.0	8.42	1246.2					
06/22/2010	04:35:02	808	0.0	8.42	1246.2					
06/22/2010	04:35:32	1	0.0	8.42	1246.2					
06/22/2010	04:36:02	1	0.0	8.42	1246.2					
06/22/2010	04:36:11					1bbbls Back				
06/22/2010	04:36:11	1	0.0	8.42	1246.2					
06/22/2010	04:36:32					End Job				
06/22/2010	04:36:32	2	0.0	8.42	1246.2					
06/22/2010	04:37:02	3	0.0	8.42	1246.2					

Well			Field		Job Start	Customer		Job Number
SGU 8507D-36			N PARACHUTE		Jun/22/2010	ENCANA		BAD4-00116
Date	Time 24-hr clock	Treating Pressure PSI	Flow Rate B/M	Density LB/G	Volume BBL	Message		
06/22/2010	04:38:02	-1	0.0	8.42	1246.2			
06/22/2010	04:38:32	-1	0.0	8.42	1246.2			
06/22/2010	04:39:02	0	0.0	8.42	1246.2			
06/22/2010	04:39:32	0	0.0	8.42	1246.2			
06/22/2010	04:40:02	1	0.0	8.42	1246.2			
06/22/2010	04:40:32	6	0.0	8.42	1246.2			
06/22/2010	04:41:02	115	0.0	8.42	1246.2			
06/22/2010	04:41:32	138	0.0	8.42	1246.4			
06/22/2010	04:42:02	105	3.2	8.42	1246.6			
06/22/2010	04:42:32	106	3.5	8.43	1248.1			
06/22/2010	04:43:02	147	4.5	8.43	1250.3			
06/22/2010	04:43:32	3	0.0	8.43	1251.5			

Post Job Summary

Average Pump Rates, bbl/min					Volume of Fluid Injected, bbl			
Slurry 6.7	N2	Mud 5.9	Maximum Rate 25.0	Total Slurry 1251.5	Mud 80.0	Spacer 416.0	N2	
Treating Pressure Summary, psi					Breakdown Fluid			
Maximum 4127	Final 3	Average 370	Bump Plug to 800	Breakdown	Type	Volume	Density	
Avg. N2 Percent	Designed Slurry Volume 558.0 bbl		Displacement 209.0 bbl	Mix Water Temp 66 degF	Cement Circulated to Surface? <input checked="" type="checkbox"/>	Volume 70.0 bbl		
					Washed Thru Perfs <input type="checkbox"/>	To		
Customer or Authorized Representative IRA COX			Schlumberger Supervisor JASON CRICK			Circulation Lost <input type="checkbox"/>	Job Completed <input checked="" type="checkbox"/>	
					-		-	