

T12N, R90W, 6th P.M.

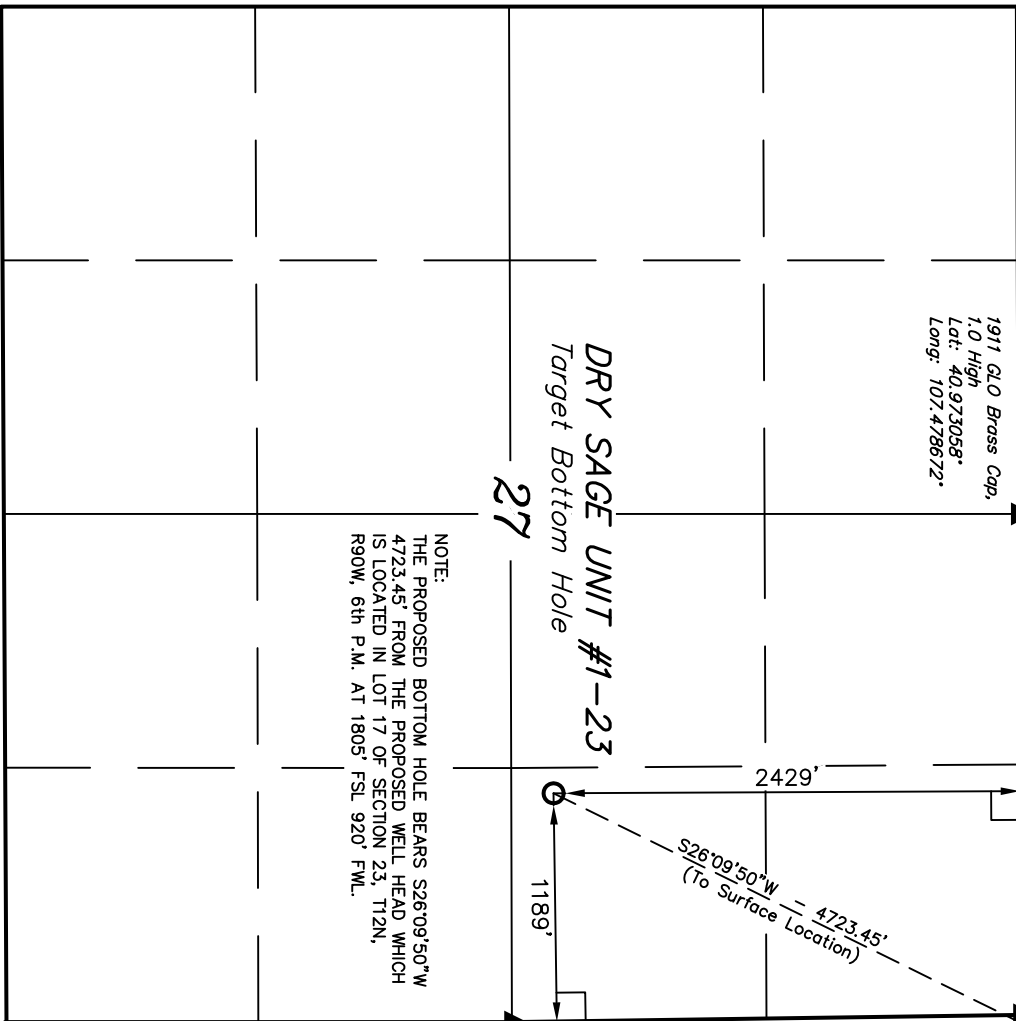
SWEP1 LP

Set Marked Stone,
N/S Fence
Lat: 40.973094°
Long: 107.469228°

589°43'40"W
2608.68' (Meas.)

1911 G.L.O. Brass Cap,
1.0' High
Lat: 40.973058°
Long: 107.478672°

S89°48'W - 2642.64' (G.L.O.)



500°49'08"E - 2652.00' (Meas.)

Set Marked Stone
Lat: 40.965819°
Long: 107.469089°

NORTH - 2640.00' (G.L.O.)

NORTH - 5280.00' (G.L.O.)

S89°42'W - 5287.92' (G.L.O.)

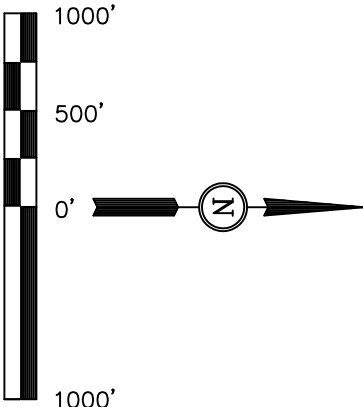
Well location, DRY SAGE UNIT #1-23 (TARGET BOTTOM HOLE), located as shown in the SE 1/4 NE 1/4 of Section 27, T12N, R90W, 6th P.M., Moffat County, Colorado.

BASIS OF ELEVATION

SPOT ELEVATION AT A ROAD INTERSECTION LOCATED IN THE NE 1/4 OF SECTION 14, T12N, R90W, 6th P.M., TAKEN FROM THE BAKERS PEAK, QUADRANGLE, COLORADO, MOFFAT COUNTY, 7.5 MINUTE QUAD (TOPOGRAPHIC MAP) PUBLISHED BY THE UNITED STATES DEPARTMENT OF THE INTERIOR, GEOLOGICAL SURVEY. SAID ELEVATION IS MARKED AS BEING 6582 FEET.

BASIS OF BEARINGS

BASIS OF BEARINGS IS A G.P.S. OBSERVATION.



CERTIFICATE

THIS IS TO CERTIFY THAT THE ABOVE PLAT WAS PREPARED FROM FIELD NOTES OF ACTUAL SURVEYS MADE BY ME OR UNDER MY SUPERVISION AND THAT THE SAME ARE TRUE AND CORRECT TO THE BEST OF MY KNOWLEDGE AND BELIEF.

REVISD: 05-30-12 J.M.H.
REVISD: 05-14-12

REGISTERED LAND SURVEYOR
REGISTRATION No. 12492
STATE OF COLORADO
05-30-12

UTAH ENGINEERING & LAND SURVEYING
85 SOUTH 200 EAST - VERNAL, UTAH 84078
(435) 789-1017

SCALE 1" = 1000'

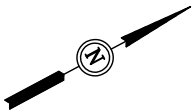
DATE SURVEYED: 07-11-11 DATE DRAWN: 07-20-11

NAD 83 (TARGET BOTTOM HOLE)
LATITUDE = 40°57'59.09" (40.966414)
LONGITUDE = 107°28'24.25" (107.473403)
NAD 27 (TARGET BOTTOM HOLE)
LATITUDE = 40°57'59.21" (40.966447)
LONGITUDE = 107°28'22.02" (107.472783)

PARTY	REFERENCES
B.H. N.F. Z.L.	G.L.O. PLAT
WEATHER	FILE
WARM	SWEP1 LP

LEGEND:

- = 90° SYMBOL
- = PROPOSED WELL HEAD.
- = SECTION CORNERS LOCATED.



SWEPI LP
ADDENDUM TO LEGAL PLAT FOR
DRY SAGE UNIT #1-23
SECTION 23, T12N, R90W, 6th P.M.
1805' FSL 920' FWL

SCALE: 1" = 200'
DATE: 07-20-11
DRAWN BY: Z.L.
REVISED: 05-14-12

