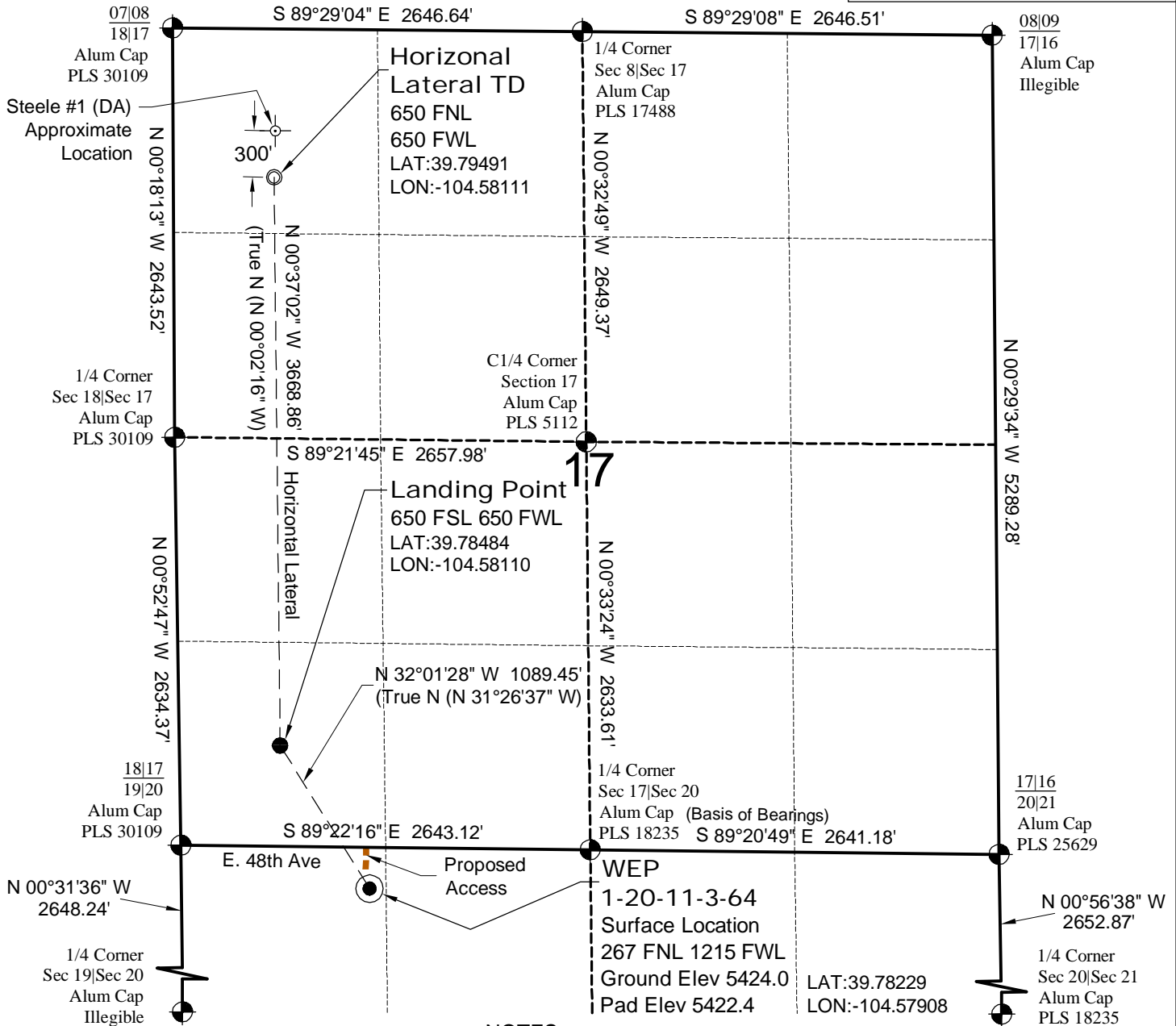


WELL LOCATION MAP

WEP
20-11-3-64 PAD

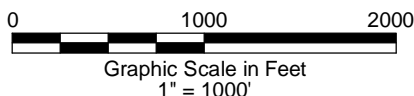


SURVEYOR'S STATEMENT

The undersigned hereby states that the well location shown hereon was staked on the ground based on existing monumentation and/or physical evidence found in the field and is correct to the best of my knowledge, information and belief.



North



NOTES

- 1.) Horizontal (NAD 83) and vertical (NAVD 88) datum is based on the Leica Geosystems SmartNet of Colorado.
 - 2.) All directions, distances, and dimensions shown hereon are based on coordinates from the "Colorado coordinate system of 1983 central zone" (article 52 of title 38, C.R.S.).
 - 3.) All section line dimensions shown hereon are based on field measurements of existing monuments and/or physical evidence found in the field unless otherwise indicated. Refer to land survey plats deposited in Weld County.
 - 4.) Physical features shown hereon are for graphical representation only.
 - 5.) See Form 2A for visible improvements within 400' of wellhead.
 - 6.) Distances to nearest section lines are measured perpendicularly.
 - 7.) This is not a land survey nor land survey plat.
 - 8.) Date of Survey 5/17/12; Date of Drawing 5/23/12. REV 0
- PDOP Reading: 2.6 Instrument Operator: Dave Murrey



CARRIZO OIL & GAS, INC
WEP 1-20-11-3-64

SL NW1/4 NW1/4 SEC.20 T3S R64W
HL TD NW1/4 NW1/4 SEC.17 T3S R64W
6th PM ADAMS COUNTY COLORADO