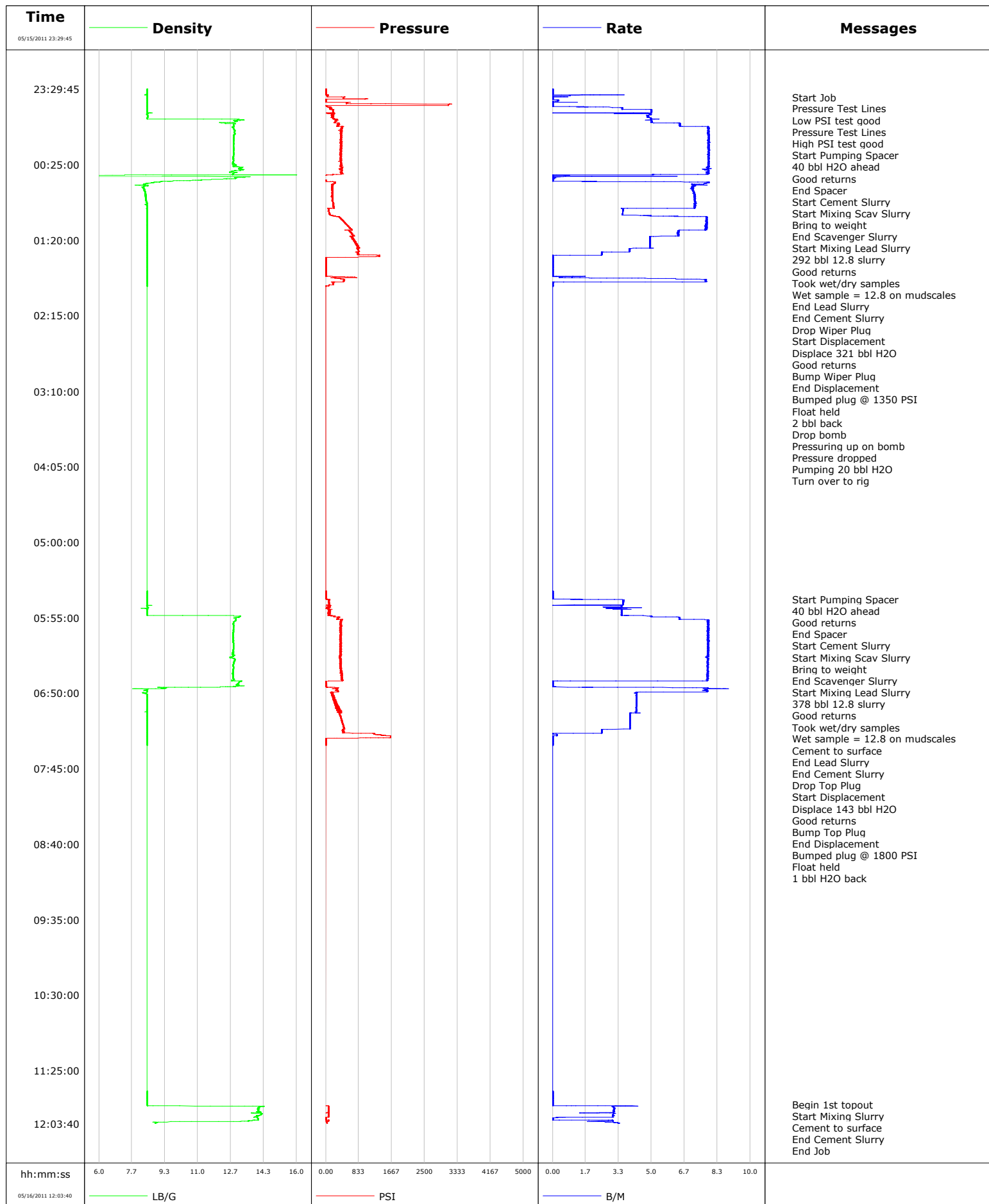


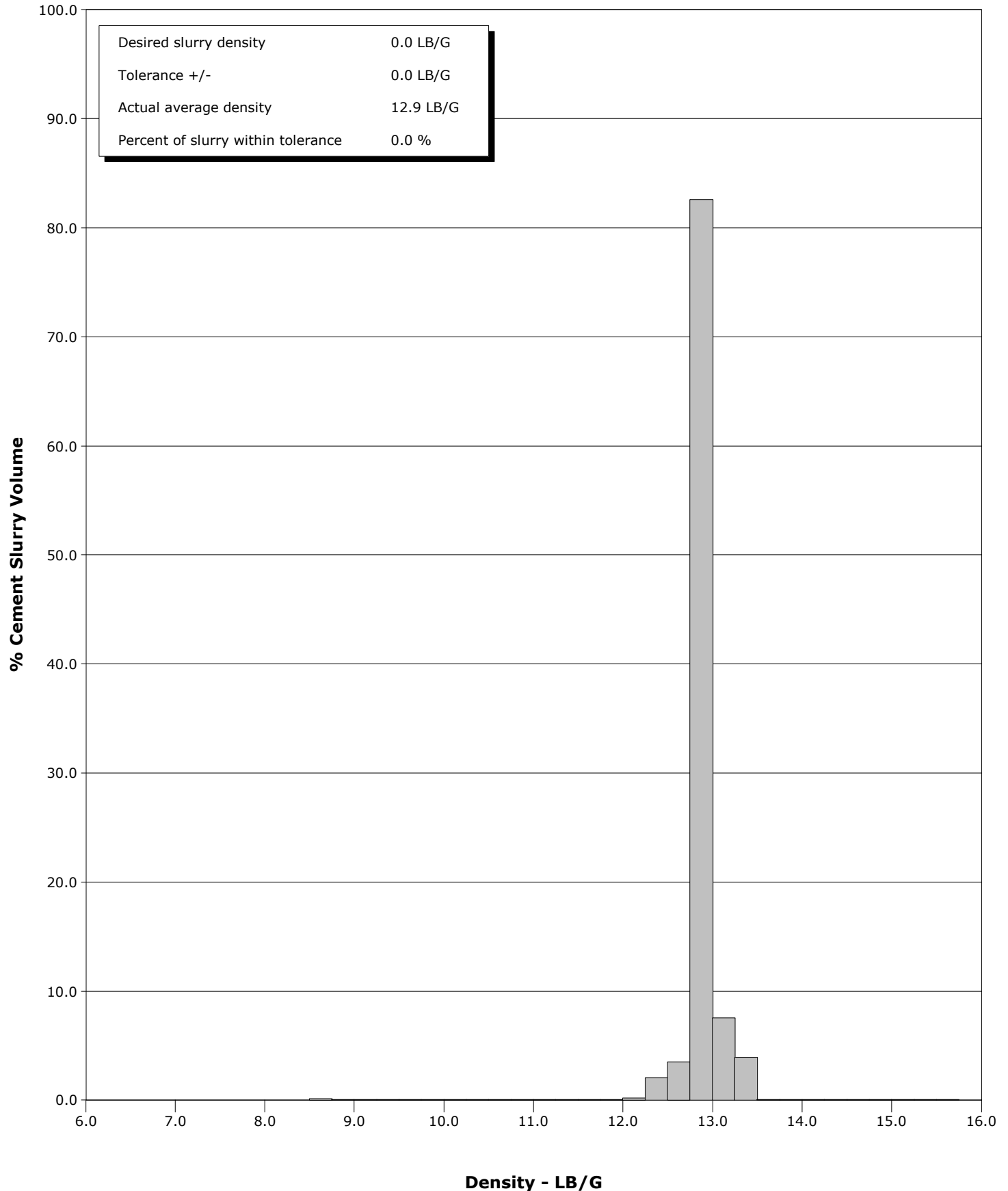
Well	RGU 541-25-198	Client	Williams
Field	Ryan Gulch	SIR No.	BP3Z-00097
Engineer	Matt Fair	Job Type	2 stage surface
Country	United States	Job Date	05-15-2011



Well RGU 541-25-198
Field Ryan Gulch
Engineer Matt Fair
Country United States

Client Williams
SIR No. BP3Z-00097
Job Type 2 stage surface
Job Date 05-15-2011

Cement Slurry - 05/15/2011 23:51:41 to 05/16/2011 00:32:49



				Customer Williams			Job Number BP3Z-00097										
Well RGU 541-25-198			Location (legal)			Schlumberger Location			Job Start May/15/2011								
Field Ryan Gulch		Formation Name/Type Shale			Deviation deg		Bit Size 13.5 in		Well MD 4196.0 ft		Well TVD 4196.0 ft						
County Rio Blanco		State/Province Colorado			BHP psi		BHST 125 degF		BHCT 90 degF		Pore Press. Gradient lb/gal						
Well Master 0631261237		API/UWI															
Rig Name Cyclone 29		Drilled For Gas		Service Via Land		Casing/Liner											
						Depth, ft		Size, in		Weight, lb/ft		Grade		Thread			
Offshore Zone		Well Class New		Well Type Exploration		4196.0		9.6		36.0		J55		BUTT			
						0.0		0.0		0.0							
Drilling Fluid Type Bentonite		Max. Density lb/gal		Plastic Viscosity cP		Tubing/Drill Pipe											
						T/D		Depth, ft		Size, in		Weight, lb/ft		Grade		Thread	
Service Line Cementing		Job Type 2 stage surface															
Max. Allowed Tub. Press 2030 psi		Max. Allowed Ann. Press 3520 psi		WH Connection 9 5/8		Perforations/Open Hole											
						Top, ft		Bottom, ft		shot/ft		No. of Shots		Total Interval ft			
Service Instructions Cement 2 stage surface Stage 1-960 sks 12.8 lead Stage 2-1240 sks 12.8 lead						ft		ft									
						ft		ft						Diameter in			
						ft		ft									
		Treat Down Casing				Displacement 321.0 bbl		Packer Type		Packer Depth ft							
		Tubing Vol. bbl				Casing Vol. 324.0 bbl		Annular Vol. 204.0 bbl		Openhole Vol. 557.0 bbl							
Casing/Tubing Secured <input checked="" type="checkbox"/>		1 Hole Vol. Circulated prior to Cement <input checked="" type="checkbox"/>				Casing Tools				Squeeze Job							
Lift Pressure 2076 psi						Shoe Type Float				Squeeze Type							
Pipe Rotated <input type="checkbox"/>		Pipe Reciprocated <input type="checkbox"/>				Shoe Depth 4196.0 ft				Tool Type							
No. Centralizers 10		Top Plugs 1		Bottom Plugs 0		Stage Tool Type DV				Tool Depth ft							
Cement Head Type Single						Stage Tool Depth 1852.0 ft				Tail Pipe Size in							
Job Scheduled For May/15/2011 22:00		Arrived on Location May/15/2011 22:00		Leave Location May/15/2011 07:00		Collar Type Float				Tail Pipe Depth ft							
						Collar Depth 4153.0 ft				Sqz. Total Vol. bbl							
Date	Time 24-hr clock	CPF1_DENSITY LB/G		CPF1_PRESS PSI		CPF1_TTL_RATE B/M		Message									
05/15/2011	23:29:45	8.44		6		0.0		Started Acquisition									
05/15/2011	23:31:25	8.44		5		0.0											
05/15/2011	23:33:05	8.44		4		0.0											
05/15/2011	23:34:45	8.44		60		0.9											
05/15/2011	23:35:27	8.44		39		0.0		Start Job									
05/15/2011	23:36:25	8.44		448		0.0											
05/15/2011	23:38:05	8.44		6		0.3											
05/15/2011	23:39:07	8.44		12		0.0		Pressure Test Lines									
05/15/2011	23:39:08	8.44		12		0.0		Low PSI test good									
05/15/2011	23:39:45	8.44		538		0.0											
05/15/2011	23:40:10	8.44		518		0.0		Pressure Test Lines									
05/15/2011	23:40:11	8.44		518		0.0		High PSI test good									
05/15/2011	23:41:25	8.44		3098		0.0											
05/15/2011	23:43:05	8.44		122		2.2											
05/15/2011	23:43:15	8.44		131		3.4		Start Pumping Spacer									
05/15/2011	23:43:17	8.44		111		3.5		40 bbl H2O ahead									
05/15/2011	23:44:45	8.44		191		4.0											
05/15/2011	23:46:24	8.44		181		5.0		Good returns									
05/15/2011	23:46:25	8.44		189		5.0											
05/15/2011	23:48:05	8.42		194		4.9											
05/15/2011	23:49:45	8.45		160		4.8											

Well			Field	Job Start	Customer	Job Number
RGU 541-25-198			Ryan Gulch	May/15/2011	Williams	BP3Z-00097
Date	Time 24-hr clock	CPF1_DENSITY LB/G	CPF1_PRESS PSI	CPF1_TTL_RATE B/M	Message	
05/15/2011	23:51:37	8.44	204	5.0	End Spacer	
05/15/2011	23:51:41	8.45	212	4.9	Start Cement Slurry	
05/15/2011	23:51:42	8.45	212	4.9	Start Mixing Scav Slurry	
05/15/2011	23:51:45	8.45	207	5.4	Bring to weight	
05/15/2011	23:53:05	12.97	257	5.0		
05/15/2011	23:53:49	12.88	244	5.0	End Scavenger Slurry	
05/15/2011	23:53:51	12.88	237	5.0	Start Mixing Lead Slurry	
05/15/2011	23:53:54	12.87	236	5.0	292 bbl 12.8 slurry	
05/15/2011	23:53:55	12.87	236	5.0	Good returns	
05/15/2011	23:53:58	12.88	240	5.0	Took wet/dry samples	
05/15/2011	23:53:59	12.88	226	5.0	Wet sample = 12.8 on mudscales	
05/15/2011	23:54:45	12.38	310	6.4		
05/15/2011	23:56:25	12.82	314	6.4		
05/15/2011	23:58:05	12.77	411	7.9		
05/15/2011	23:59:45	12.84	392	7.9		
05/16/2011	00:01:25	12.86	389	7.9		
05/16/2011	00:03:05	12.84	393	7.9		
05/16/2011	00:04:45	12.83	389	7.9		
05/16/2011	00:06:25	12.81	386	7.9		
05/16/2011	00:08:05	12.81	388	7.9		
05/16/2011	00:09:45	12.81	372	7.9		
05/16/2011	00:11:25	12.80	391	7.9		
05/16/2011	00:13:05	12.82	397	7.9		
05/16/2011	00:14:45	12.81	391	7.9		
05/16/2011	00:16:25	12.81	386	7.9		
05/16/2011	00:18:05	12.81	380	7.9		
05/16/2011	00:19:45	12.79	389	7.9		
05/16/2011	00:21:25	12.79	391	7.9		
05/16/2011	00:23:05	12.79	379	7.9		
05/16/2011	00:24:45	12.77	380	7.9		
05/16/2011	00:26:25	12.82	379	7.9		
05/16/2011	00:28:05	13.10	356	7.7		
05/16/2011	00:29:45	12.74	395	7.9		
05/16/2011	00:31:25	12.81	400	7.9		
05/16/2011	00:32:48	4.07	10	0.8	End Lead Slurry	
05/16/2011	00:32:49	4.07	10	0.8	End Cement Slurry	
05/16/2011	00:32:55	0.50	4	0.0	Drop Wiper Plug	
05/16/2011	00:32:57	0.24	1	0.0	Start Displacement	
05/16/2011	00:33:05	0.13	-1	0.0		
05/16/2011	00:34:45	12.89	-1	0.0		
05/16/2011	00:36:25	11.01	1	0.0		
05/16/2011	00:38:05	8.72	233	7.9		
05/16/2011	00:39:45	8.02	157	7.5		
05/16/2011	00:39:48	8.07	179	7.1	Displace 321 bbl H2O	
05/16/2011	00:41:25	8.21	159	7.0		
05/16/2011	00:43:05	8.29	154	7.1		
05/16/2011	00:44:45	8.33	165	7.1		
05/16/2011	00:46:25	8.35	171	7.2		
05/16/2011	00:48:05	8.37	164	7.2		
05/16/2011	00:49:45	8.35	173	7.2		
05/16/2011	00:51:25	8.38	163	7.2		
05/16/2011	00:53:05	8.43	189	7.2		
05/16/2011	00:54:45	8.43	189	7.2		
05/16/2011	00:56:25	8.43	203	7.2		

Well RGU 541-25-198			Field Ryan Gulch	Job Start May/15/2011	Customer Williams	Job Number BP3Z-00097
Date	Time 24-hr clock	CPF1_DENSITY LB/G	CPF1_PRESS PSI	CPF1_TTL_RATE B/M	Message	
05/16/2011	00:59:45	8.43	83	3.5		
05/16/2011	01:01:25	8.43	108	3.5		
05/16/2011	01:03:05	8.43	338	7.8		
05/16/2011	01:04:45	8.43	395	7.8		
05/16/2011	01:06:25	8.43	455	7.8		
05/16/2011	01:08:05	8.43	505	7.8		
05/16/2011	01:09:45	8.43	568	7.8		
05/16/2011	01:11:25	8.43	624	7.8		
05/16/2011	01:13:05	8.43	602	6.4		
05/16/2011	01:14:45	8.43	631	6.3		
05/16/2011	01:16:25	8.43	698	6.4		
05/16/2011	01:18:05	8.43	671	4.9		
05/16/2011	01:19:45	8.43	703	4.9		
05/16/2011	01:21:25	8.43	752	4.9		
05/16/2011	01:23:05	8.43	797	4.9		
05/16/2011	01:24:45	8.43	821	4.9		
05/16/2011	01:26:25	8.44	807	3.9		
05/16/2011	01:28:05	8.44	836	3.9		
05/16/2011	01:29:45	8.44	814	2.5		
05/16/2011	01:31:00	8.44	1343	0.9	Bump Wiper Plug	
05/16/2011	01:31:01	8.44	1354	0.9	End Displacement	
05/16/2011	01:31:04	8.44	1346	0.2	Bumped plug @ 1350 PSI	
05/16/2011	01:31:25	8.44	1356	0.0		
05/16/2011	01:32:42	8.44	3	0.0	Float held	
05/16/2011	01:33:00	8.44	5	0.0	Drop bomb	
05/16/2011	01:33:05	8.44	6	0.0		
05/16/2011	01:34:45	8.44	7	0.0		
05/16/2011	01:36:25	8.44	7	0.0		
05/16/2011	01:38:05	8.44	7	0.0		
05/16/2011	01:39:45	8.44	6	0.0		
05/16/2011	01:41:25	8.44	6	0.0		
05/16/2011	01:43:05	8.44	6	0.0		
05/16/2011	01:44:45	8.44	5	0.0		
05/16/2011	01:46:25	8.44	84	1.6		
05/16/2011	01:46:31	8.44	254	1.3	Pressuring up on bomb	
05/16/2011	01:47:19	8.44	204	1.0	Pressure dropped	
05/16/2011	01:47:59	8.43	346	5.3	Pumping 20 bbl H2O	
05/16/2011	01:48:05	8.44	363	5.9		
05/16/2011	01:49:45	8.44	452	7.8		
05/16/2011	01:51:25	8.44	192	0.0		
05/16/2011	01:52:41	8.44	90	0.0	Turn over to rig	
05/16/2011	01:53:05	8.44	77	0.0		
05/16/2011	05:36:25	8.44	4	0.0		
05/16/2011	05:38:05	8.44	4	0.0		
05/16/2011	05:39:45	8.44	3	0.0		
05/16/2011	05:41:25	8.44	4	0.0		
05/16/2011	05:41:42	8.44	30	1.3	Start Pumping Spacer	
05/16/2011	05:43:05	8.43	79	3.6		
05/16/2011	05:44:00	8.43	88	3.6	40 bbl H2O ahead	
05/16/2011	05:44:06	8.43	90	3.6	Good returns	
05/16/2011	05:44:45	8.44	79	3.6		
05/16/2011	05:46:25	8.43	85	3.5		
05/16/2011	05:48:05	8.50	69	3.1		
05/16/2011	05:49:45	8.44	93	3.5		

Well RGU 541-25-198			Field Ryan Gulch	Job Start May/15/2011	Customer Williams	Job Number BP3Z-00097
Date	Time 24-hr clock	CPF1_DENSITY LB/G	CPF1_PRESS PSI	CPF1_TTL_RATE B/M	Message	
05/16/2011	05:53:05	8.43	99	3.5		
05/16/2011	05:53:31	8.43	101	3.5	End Spacer	
05/16/2011	05:53:36	8.43	61	3.5	Start Cement Slurry	
05/16/2011	05:53:38	8.43	78	3.5	Start Mixing Scav Slurry	
05/16/2011	05:53:43	11.54	165	3.6	Bring to weight	
05/16/2011	05:54:45	13.08	348	6.1		
05/16/2011	05:55:19	12.84	302	6.4	End Scavenger Slurry	
05/16/2011	05:55:20	12.84	306	6.4	Start Mixing Lead Slurry	
05/16/2011	05:55:23	12.84	307	6.4	378 bbl 12.8 slurry	
05/16/2011	05:55:25	12.88	300	6.4	Good returns	
05/16/2011	05:55:26	12.91	322	6.4	Wet sample = 12.8 on mudscales	
05/16/2011	05:56:25	12.92	304	6.4		
05/16/2011	05:58:05	12.83	374	7.9		
05/16/2011	05:59:45	12.78	376	7.9		
05/16/2011	06:01:25	12.81	370	7.8		
05/16/2011	06:03:05	12.80	387	7.8		
05/16/2011	06:04:45	12.79	384	7.9		
05/16/2011	06:06:25	12.79	393	7.9		
05/16/2011	06:08:05	12.78	385	7.8		
05/16/2011	06:09:45	12.79	390	7.9		
05/16/2011	06:11:25	12.78	377	7.8		
05/16/2011	06:13:05	12.78	379	7.9		
05/16/2011	06:14:45	12.80	373	7.8		
05/16/2011	06:16:25	12.80	389	7.8		
05/16/2011	06:18:05	12.79	393	7.9		
05/16/2011	06:19:45	12.79	388	7.8		
05/16/2011	06:21:25	12.81	397	7.9		
05/16/2011	06:23:05	12.78	344	7.9		
05/16/2011	06:24:45	12.80	378	7.9		
05/16/2011	06:26:25	12.86	391	7.9		
05/16/2011	06:28:05	12.81	373	7.8		
05/16/2011	06:29:45	12.78	388	7.9		
05/16/2011	06:31:25	12.80	379	7.8		
05/16/2011	06:33:05	12.78	391	7.8		
05/16/2011	06:34:45	12.78	374	7.8		
05/16/2011	06:36:25	12.77	405	7.8		
05/16/2011	06:38:05	12.78	400	7.8		
05/16/2011	06:38:40	12.78	390	7.9	Cement to surface	
05/16/2011	06:39:45	12.79	416	7.8		
05/16/2011	06:41:16	12.71	-3	3.2	End Lead Slurry	
05/16/2011	06:41:17	12.88	-4	3.2	End Cement Slurry	
05/16/2011	06:41:23	13.21	4	0.2	Drop Top Plug	
05/16/2011	06:41:25	13.21	5	0.0	Start Displacement	
05/16/2011	06:43:05	13.03	13	0.0		
05/16/2011	06:44:45	13.37	3	0.0		
05/16/2011	06:46:07	9.36	293	6.7	Displace 143 bbl H2O	
05/16/2011	06:46:25	9.36	302	7.9		
05/16/2011	06:46:59	8.18	165	8.6	Good returns	
05/16/2011	06:48:05	8.44	296	7.8		
05/16/2011	06:49:45	8.21	157	4.2		
05/16/2011	06:51:25	8.44	180	4.3		
05/16/2011	06:53:05	8.44	214	4.3		
05/16/2011	06:54:45	8.44	182	4.3		
05/16/2011	06:56:25	8.44	237	4.3		

Well			Field		Job Start	Customer	Job Number
RGU 541-25-198			Ryan Gulch		May/15/2011	Williams	BP3Z-00097
Date	Time 24-hr clock	CPF1_DENSITY LB/G	CPF1_PRESS PSI	CPF1_TTL_RATE B/M	Message		
05/16/2011	06:59:45	8.44	294	4.2			
05/16/2011	07:01:25	8.45	288	4.2			
05/16/2011	07:03:05	8.44	310	4.2			
05/16/2011	07:04:45	8.44	349	3.9			
05/16/2011	07:06:25	8.45	360	3.9			
05/16/2011	07:08:05	8.45	385	3.9			
05/16/2011	07:09:45	8.45	404	3.9			
05/16/2011	07:11:25	8.45	413	3.9			
05/16/2011	07:13:05	8.45	434	3.9			
05/16/2011	07:14:45	8.45	457	3.9			
05/16/2011	07:16:25	8.45	433	3.9			
05/16/2011	07:18:05	8.45	444	2.5			
05/16/2011	07:19:05	8.45	448	2.5	Bump Top Plug		
05/16/2011	07:19:06	8.45	451	2.5	End Displacement		
05/16/2011	07:21:25	8.45	1635	0.0			
05/16/2011	07:22:38	8.45	1326	0.0	Bumped plug @ 1800 PSI		
05/16/2011	07:23:05	8.45	116	0.0			
05/16/2011	07:23:23	8.45	5	0.0	Float held		
05/16/2011	07:23:25	8.45	5	0.0	1 bbl H2O back		
05/16/2011	07:24:45	8.45	5	0.0			
05/16/2011	07:26:25	8.45	5	0.0			
05/16/2011	07:28:05	8.45	5	0.0			
05/16/2011	11:41:25	8.43	-1	0.0			
05/16/2011	11:43:05	8.43	-1	0.0			
05/16/2011	11:44:45	8.44	-1	0.0			
05/16/2011	11:46:25	8.44	-1	0.0			
05/16/2011	11:48:05	8.44	-1	0.0			
05/16/2011	11:49:35	8.43	-10	0.0	Begin 1st topout		
05/16/2011	11:49:45	8.43	-2	0.0			
05/16/2011	11:51:01	12.72	69	4.2	Start Mixing Slurry		
05/16/2011	11:51:25	14.24	70	3.0			
05/16/2011	11:53:05	14.11	69	3.1			
05/16/2011	11:54:45	14.10	63	3.1			
05/16/2011	11:56:25	14.14	66	3.1			
05/16/2011	11:58:05	14.02	62	3.1			
05/16/2011	11:58:44	13.97	62	3.1	Cement to surface		
05/16/2011	11:59:14	13.87	-5	1.5	End Cement Slurry		
05/16/2011	11:59:45	14.02	-6	0.0			
05/16/2011	12:01:25	13.86	71	3.0			
05/16/2011	12:03:05	8.94	33	3.1			

Well RGU 541-25-198	Field Ryan Gulch	Job Start May/15/2011	Customer Williams	Job Number BP3Z-00097
-------------------------------	----------------------------	---------------------------------	-----------------------------	---------------------------------

Post Job Summary

Average Pump Rates, bbl/min					Volume of Fluid Injected, bbl			
Slurry 5.9	N2	Mud	Maximum Rate 8.9		Total Slurry 1284.6	Mud 0.0	Spacer 71.3	N2
Treating Pressure Summary, psi					Breakdown Fluid			
Maximum 3186	Final 35	Average 117	Bump Plug to 1400	Breakdown	Type	Volume bbl	Density lb/gal	
Avg. N2 Percent %		Designed Slurry Volume 670.0 bbl	Displacement 473.9 bbl	Mix Water Temp 54 degF	Cement Circulated to Surface? <input type="checkbox"/>	Volume bbl		
					Washed Thru Perfs <input type="checkbox"/>	To ft		
Customer or Authorized Representative Andrew Brunk			Schlumberger Supervisor Matt Fair			Circulation Lost <input type="checkbox"/>	Job Completed <input checked="" type="checkbox"/>	
						-		-



Service Quality Evaluation

Client:	Williams
Field:	Ryan Gulch
Rig:	Cyclone 29
Well:	RGU 541-25-198
Service Line:	Cementing
Job Type:	2 stage surface

Service Order #:	
Date:	May/15/2011
Operating Time (hh:mm):	00:00
Client Rep:	Andrew Brunk
Schlumberger Engineer:	Matt Fair
Schlumberger FSM:	

Main Objective:

To be completed by Company Rep. Please answer Y (Yes) or N (No) and add any comments below.

		Score	Yes / No		Result
1	HSE				
1a	Free of lost time injury and compliance with SLB and loc. spec. HSE practice	5	yes <input checked="" type="checkbox"/>	no <input type="checkbox"/>	5
1b	Free of environmental spill or non-compliant discharge	5	yes <input checked="" type="checkbox"/>	no <input type="checkbox"/>	5
1c	Wellsite left clean	4	yes <input checked="" type="checkbox"/>	no <input type="checkbox"/>	4
Sub-total					100%

2	Design / Preparation				
2a	Program incl. job simulation (CemCADE) & pump schedule / tool hydraulic calcs	3	yes <input checked="" type="checkbox"/>	no <input type="checkbox"/>	3
2b	Equipment maintenance schedule completed / Green tagged	2	yes <input checked="" type="checkbox"/>	no <input type="checkbox"/>	2
2c	All materials and equipment required for job/contingency checked & on location	2	yes <input checked="" type="checkbox"/>	no <input type="checkbox"/>	2
2d	Safety / pre-job meeting conducted with all involved present	2	yes <input checked="" type="checkbox"/>	no <input type="checkbox"/>	2
Sub-total					100%

3	Execution				
3a	Lost time < 30 mins	3	yes <input checked="" type="checkbox"/>	no <input type="checkbox"/>	3
3b	Equipment pressure tested succesfully	3	yes <input checked="" type="checkbox"/>	no <input type="checkbox"/>	3
3c	All key parameters monitored and recorded accurately (Pressure, Rate, Density)	2	yes <input checked="" type="checkbox"/>	no <input type="checkbox"/>	2
3d	Plugs / darts released and tested succesfully	2	yes <input checked="" type="checkbox"/>	no <input type="checkbox"/>	2
3e	Density variation met expectations	2	yes <input checked="" type="checkbox"/>	no <input type="checkbox"/>	2
3f	Personnel performed as per expectations	2	yes <input checked="" type="checkbox"/>	no <input type="checkbox"/>	2
3g	Equipment performed as per expectations	2	yes <input checked="" type="checkbox"/>	no <input type="checkbox"/>	2
3h	Job pumped as per design	3	yes <input checked="" type="checkbox"/>	no <input type="checkbox"/>	3
3i	Did job start on time	2	yes <input checked="" type="checkbox"/>	no <input type="checkbox"/>	2
3j	Free of Operational failures (screen out, Cementing Example, etc.)	3	yes <input checked="" type="checkbox"/>	no <input type="checkbox"/>	3
Sub-total					100%

4	Evaluation				
4a	Main job objective achieved with no consequential non-productive time	10	yes <input checked="" type="checkbox"/>	no <input type="checkbox"/>	10
Sub-total					100%

Total 100%

Comments: (Please include a brief explanation for a "NO" response and summarize any innovations attempted on this well.)

Client:	Schlumberger:
Client Signature:	Schlumberger Signature: