



LOG created using LPLOT VH Version 3.0, March 08, 2012, Copyright (C) 1999-2009 Pason Systems Corp.

OPERATOR: CONTINENTAL RESOURCES, INC.

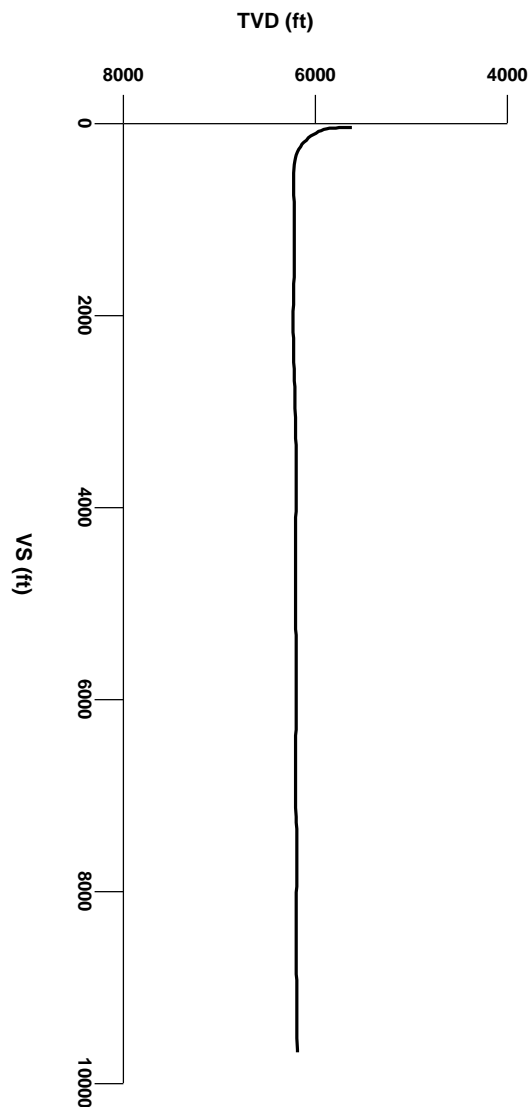
WELL: BUCHNER 1-2H

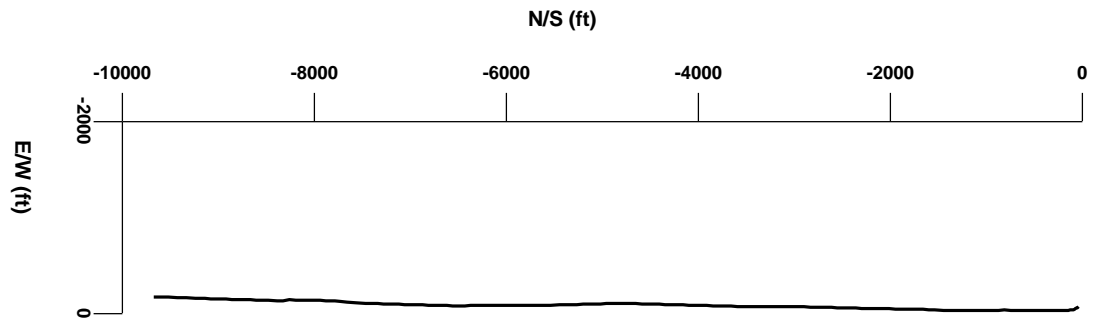
PRINT DATE: 3/8/2012 12:48:55 PM

LOCATION: SEC. 2&11 T7N R60W

COUNTY: WELD

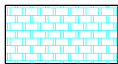
STATE: CO





Survey Plan

LITHOLOGIES



Chalk



Coal



Marl



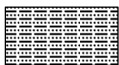
No Sample



Shaly Sandstone



Shaly Siltstone



Silty Shale

ENGINEERING SYMBOLS



Casing



Casing



Connection Gas



Midnight Depth

BAR SYMBOLS

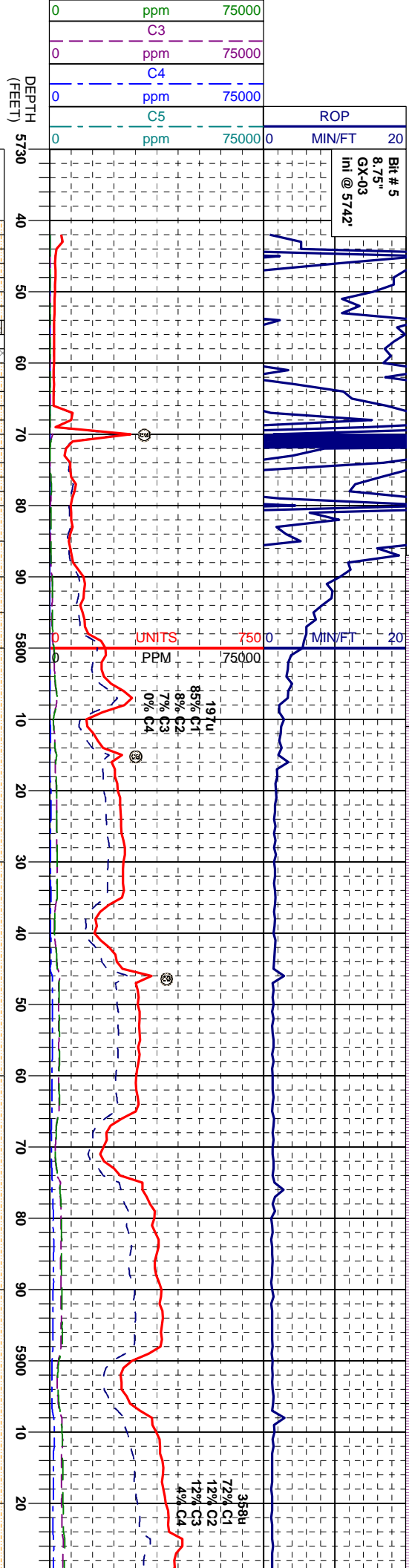
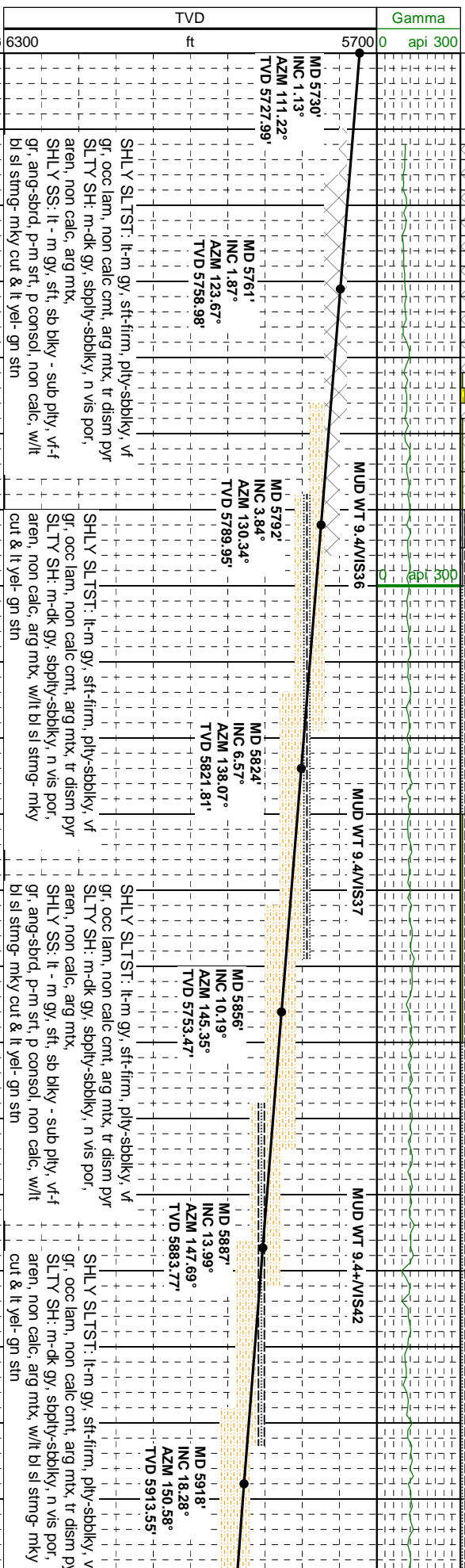


Rotating



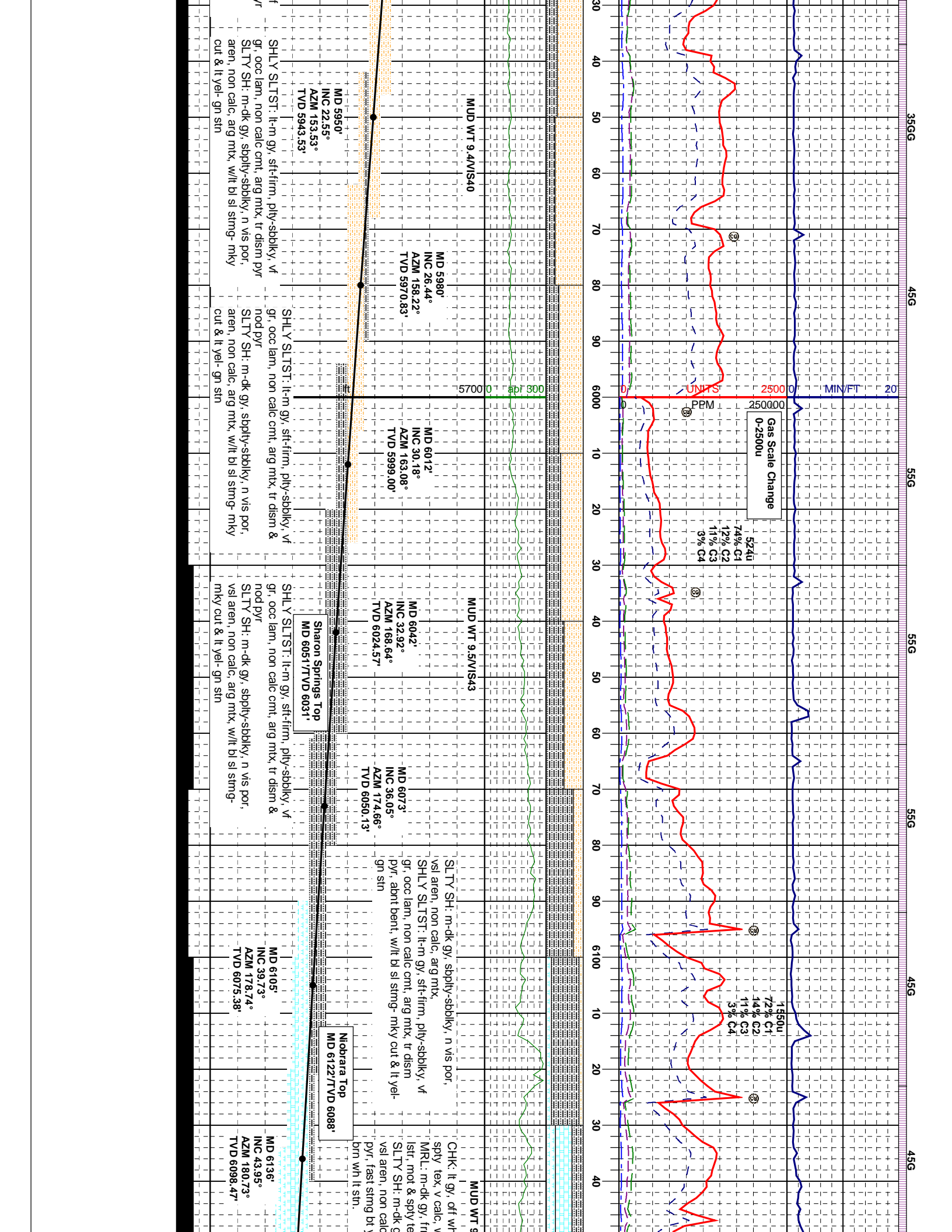
Sliding

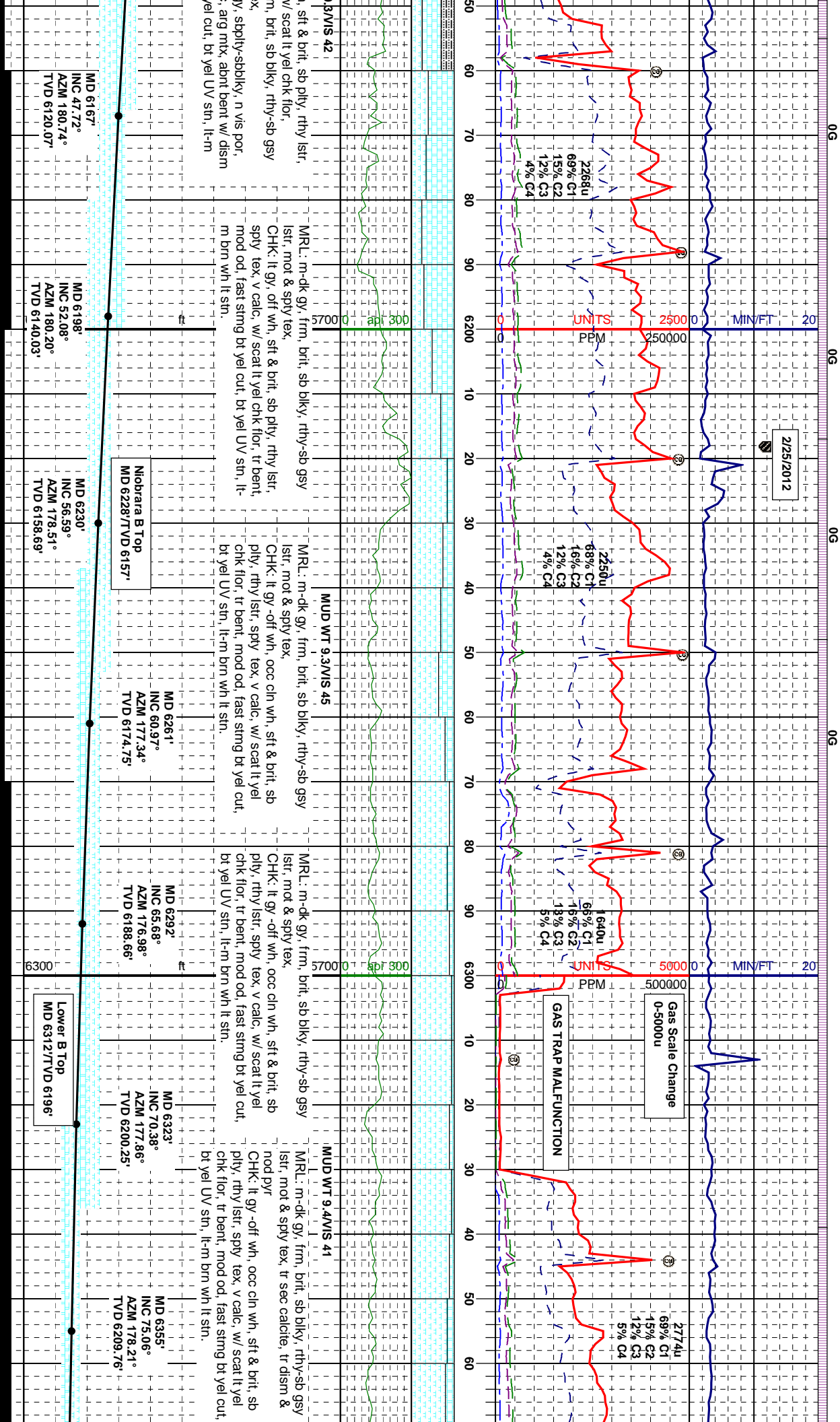
GAS		
0	UNITS	750
C1		
0	ppm	75000
C2		

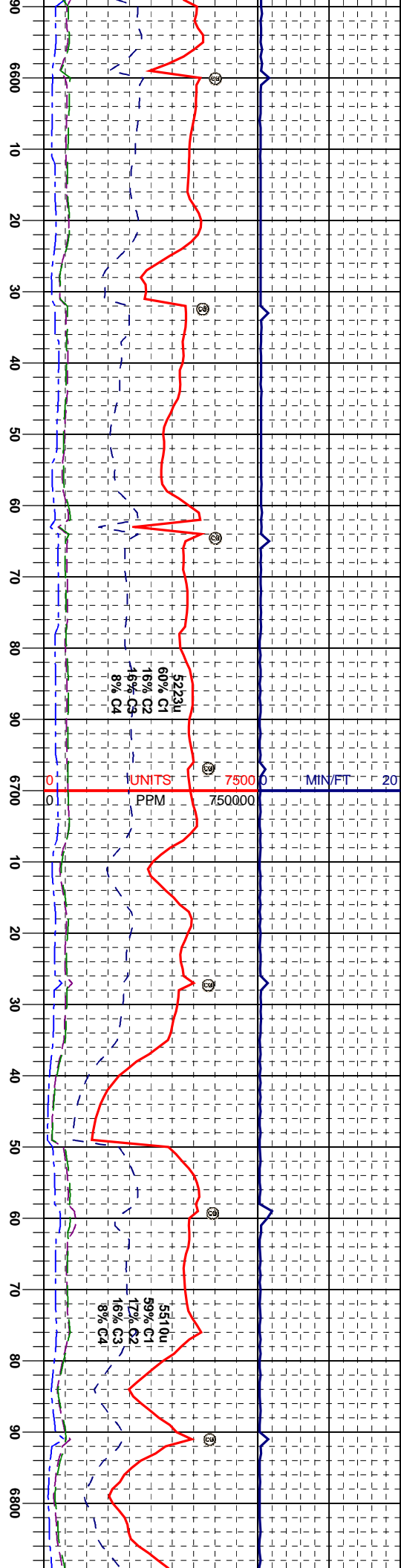
CUTTINGS
LITHOLOGY

OIL SHOW
T F

SAMPLE PHOTOS







CHK: It gy -off wh, occ cin wh, sft & brit, sb
ply, rthy lstr, spy tex, v calc, w/ scat It yel
chk flr.

MR: m-dk gy, frm, brit, sb blk, rthy-sb gsy
lstr, mot & spy tex, tr sec calcite, tr dism &
nod pyr, tr bent, mod od, fast stimg bt yel cut,
bt yel UV str, lt-m brn wh lt str.

CHK: It gy -off wh, occ cin wh, sft & brit, sb
ply, rthy lstr, spy tex, v calc, w/ scat It yel
chk flr.

MR: m-dk gy, frm, brit, sb blk, rthy-sb gsy
lstr, mot & spy tex, tr sec calcite, tr dism &
nod pyr, tr bent, mod od, fast stimg bt yel cut,
bt yel UV str, lt-m brn wh lt str.

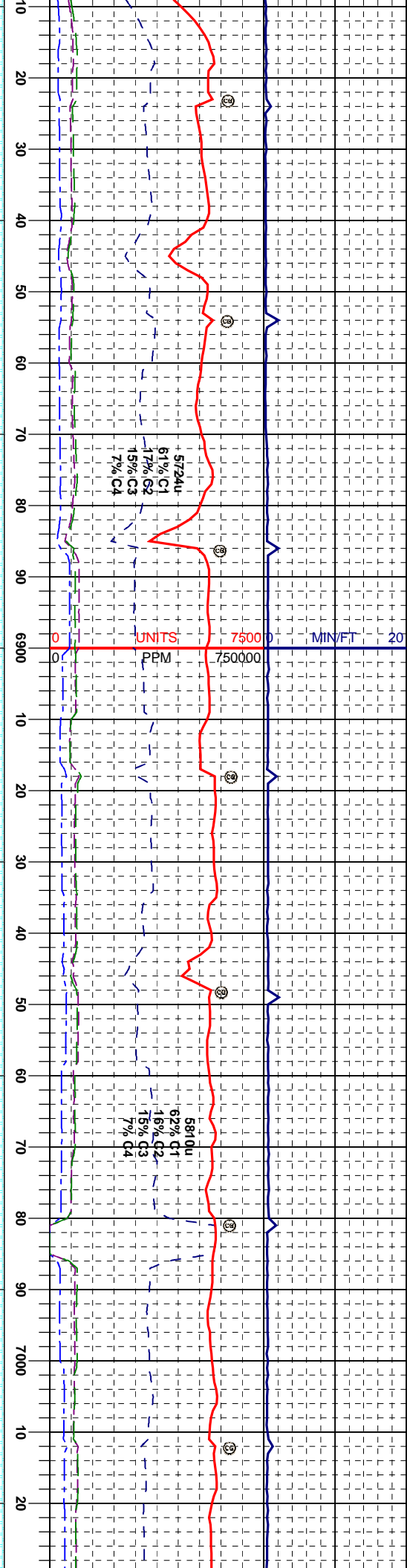
CHK: It gy -off wh, occ cin wh, sft & brit, sb
ply, rthy lstr, spy tex, v calc, w/ scat It yel
chk flr.

MR: m-dk gy, frm, brit, sb blk, rthy-sb gsy
lstr, mot & spy tex, tr sec calcite, tr dism &
nod pyr, tr bent, mod od, fast stimg bt yel cut,
bt yel UV str, lt-m brn wh lt str.

CHK: It gy -off wh, occ cin wh, sft & brit, sb
ply, rthy lstr, spy tex, v calc, w/ scat It yel
chk flr.

MR: m-dk gy, frm, brit, sb blk, rthy-sb gsy
lstr, mot & spy tex, tr sec calcite, tr dism &
nod pyr, tr bent, mod od, fast stimg bt yel cut,
bt yel UV str, lt-m brn wh lt str.

MD 6624'				MD 6687'				MD 6751'			
INC 90.19°				INC 90.37°				INC 90.19°			
AZM 181.41°				AZM 181.01°				AZM 180.55°			
TVD 6227.34'				TVD 6227.04'				TVD 6226.72'			
STRONG HC ODOR @ SHAKERS				MODERATE OIL ON SHAKERS				STRONG HC ODOR @ SHAKERS			
MODERATE OIL ON SHAKERS				MODERATE OIL ON SHAKERS				HEAVY OIL ON SHAKERS			



off wh, occ cin wh, sft & brit, sb
tr spy tex, v calc, w/ scat lt yel

CHK: lt gy -off wh, occ cin wh, sft & brit, sb
ply, rthy lstr, spy tex, v calc, w/ scat lt yel
chk flr.

MRL: m-dk gy, frm, brit, sb blk, rthy-sb gsy
lstr, mot & spy tex, tr sec calcite, tr dism &
nod pyr, tr bent, mod od, fast stmg bt yel cut,
bt yel UV stm, lt-m brn wh lt stm.

MD 6814' INC 90.37°
AZM 180.04°
TVD 6226.42'

MD 6877' INC 90.19°
AZM 179.49°
TVD 6226.04'

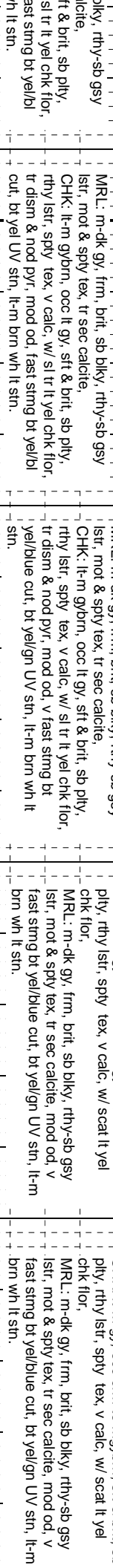
MD 6940' INC 90.25°
AZM 179.14°
TVD 6225.73'

MD 7004' INC 90.31°
AZM 178.73°
TVD 6225.42'

STRONG HC ODOR @ SHAKERS
HEAVY OIL ON SHAKERS

STRONG HC ODOR @ SHAKERS
MODERATE/HEAVY OIL ON SHAKERS

ST MC



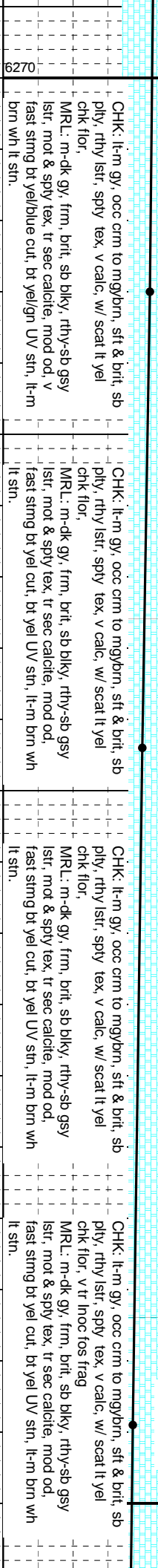
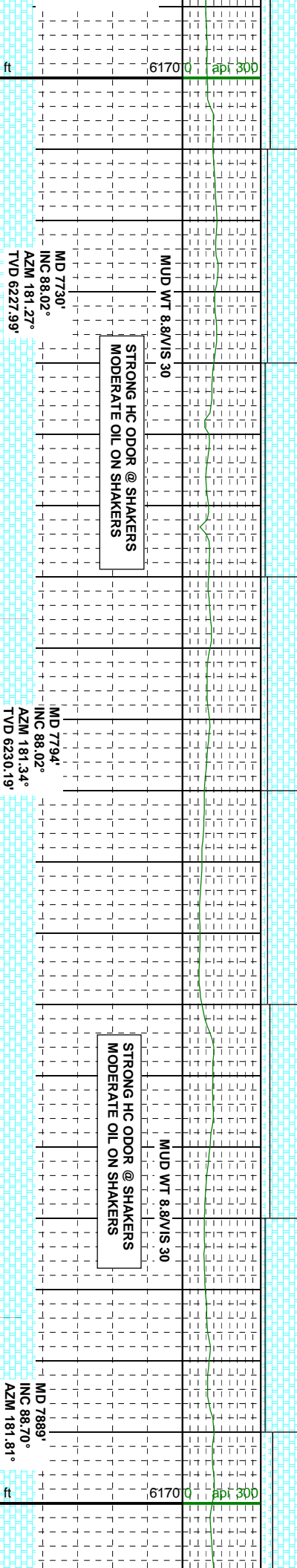
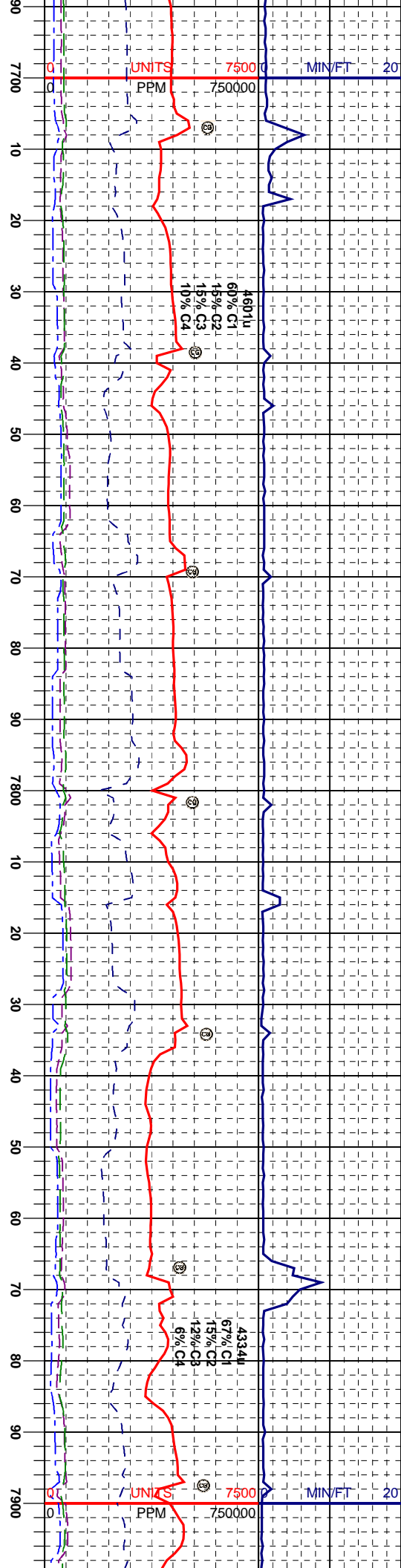
6270

**STRONG HC ODOR @ SHAKERS
FAIR OIL ON SHAKERS**

INC	89.20°
AZM	182.04°
TVD	6225.89'

**STRONG HC ODOR @ SHAKERS
MODERATE OIL ON SHAKERS**

MD /666'	+	+	-	-	-	-
INC 89.51°	+	+	-	-	-	-
AZM 182.13°	-	-	-	-	-	-
TVD 6226.61'	+	+	-	-	-	-



STRONG HC ODOR @ SHAKERS
MODERATE OIL ON SHAKERS

STRONG HC ODOR @ SHAKERS
MODERATE OIL ON SHAKERS

MD 7730°
INC 88.02°
AZM 181.27°
TVD 6227.99'

MD 7794°
INC 88.02°
AZM 181.34°
TVD 6230.19'

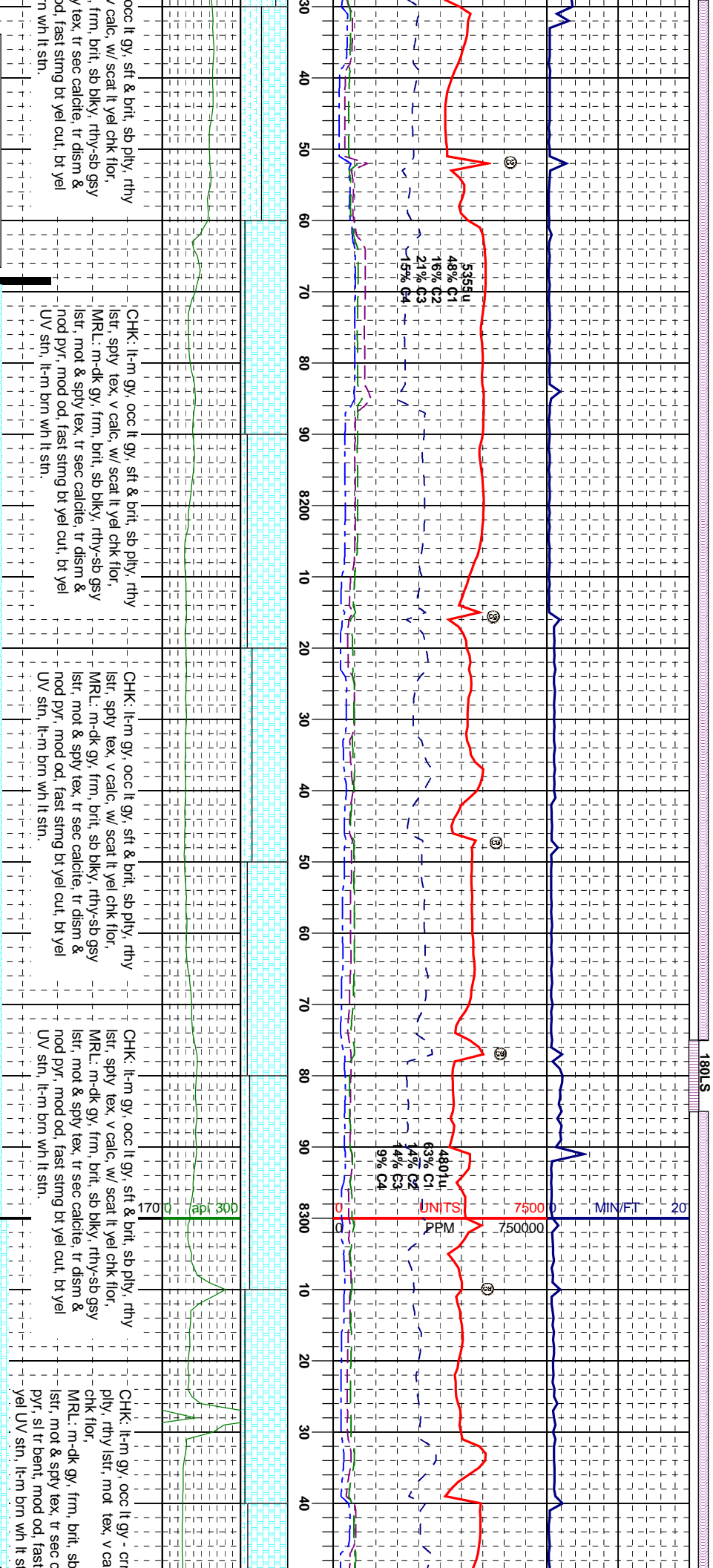
MD 7889°
INC 88.70°
AZM 181.81°
TVD 6232.91'

CHK: lt-m gy, occ crm to mgy/brn, sft & brit, sb
ply, rthy lstr, spy tex, v calc, w/ scat lt yel
chk flor,
MRL: m-dk gy, frm, brit, sb blk, rthy-sb gsy
lstr, mot & spy tex, tr sec calcite, mod od, v
fast stmg bt yel/blue cut, bt yel/gn UV sn, lt-m
brn wh lt sn.

CHK: lt-m gy, occ crm to mgy/brn, sft & brit, sb
ply, rthy lstr, spy tex, v calc, w/ scat lt yel
chk flor,
MRL: m-dk gy, frm, brit, sb blk, rthy-sb gsy
lstr, mot & spy tex, tr sec calcite, mod od,
fast stmg bt yel cut, bt yel UV sn, lt-m brn wh
lt sn.

CHK: lt-m gy, occ crm to mgy/brn, sft & brit, sb
ply, rthy lstr, spy tex, v calc, w/ scat lt yel
chk flor,
MRL: m-dk gy, frm, brit, sb blk, rthy-sb gsy
lstr, mot & spy tex, tr sec calcite, mod od,
fast stmg bt yel cut, bt yel UV sn, lt-m brn wh
lt sn.

CHK: lt-m gy, occ crm to mgy/brn, sft & brit, sb
ply, rthy lstr, spy tex, v calc, w/ scat lt yel
chk flor, v tr inoc fos frag
MRL: m-dk gy, frm, brit, sb blk, rthy-sb gsy
lstr, mot & spy tex, tr sec calcite, mod od,
fast stmg bt yel cut, bt yel UV sn, lt-m brn wh
lt sn.



**STRONG HC ODOR @ SHAKERS
FAIR OIL ON SHAKERS**

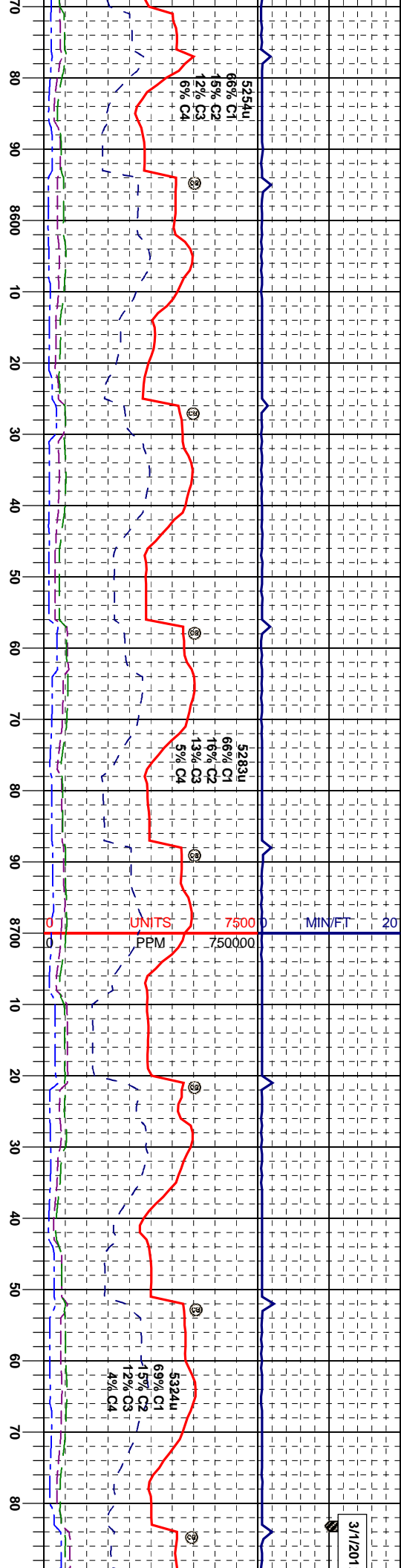
MD 8174'
INC 91.73°
AZM 180.62°
TVD 6233.19'

MD 8237'
INC 91.98°
AZM 180.72°
TVD 6231.16

**STRONG HC ODOR @ SHAKERS
FAIR OIL ON SHAKERS**

MD 8300'
INC 90.12°
AZM 181.21°
TVD 6230.01

ft



MODERATE HC ODOR @ SHAKERS
FAIR OIL ON SHAKERS

MD 8617'
INC 92.35°
AZM 181.57°
TVD 6223.14'

MD 8680'
INC 92.35°
AZM 181.38°
TVD 6220.56'

MD 8744'
INC 92.29°
AZM 181.63°
TVD 6217.97'

STRONG HC ODOR @ SHAKERS
FAIR OIL ON SHAKERS

CHK: lt-m gy, occ lt gy - crm, sft & brit, sb
ply, rthy - gsy lstr, mot - sl lam tex, v calc, w/
scat lt yel chk flr.
MRL: m-dk gy, frm, brit, sb blk, rthy-sb gsy
lstr, mot & sply tex, scat sec calcite, sl tr dism
pyr, mod od, fast smg bt yel cut, bt yel UV
stin, lt-m brn wh lt stn.

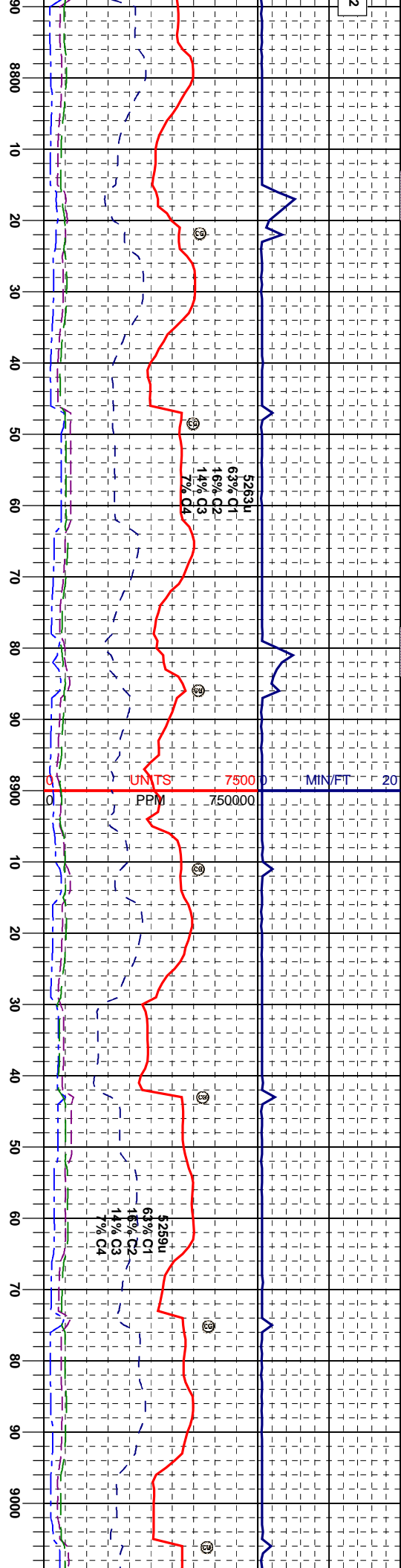
CHK: lt-m gy, occ lt crm, sft & brit, sb ply,
rthy - gsy lstr, mot lam tex, v calc, w/ scat lt
yel chk flr.
MRL: m-dk gy, frm, brit, sb blk, rthy-sb gsy
lstr, mot & sply tex, scat sec calcite, sl tr dism
pyr, tr bent, mod od, fast smg bt yel cut, bt
yel UV stn, lt-m brn wh lt stn.

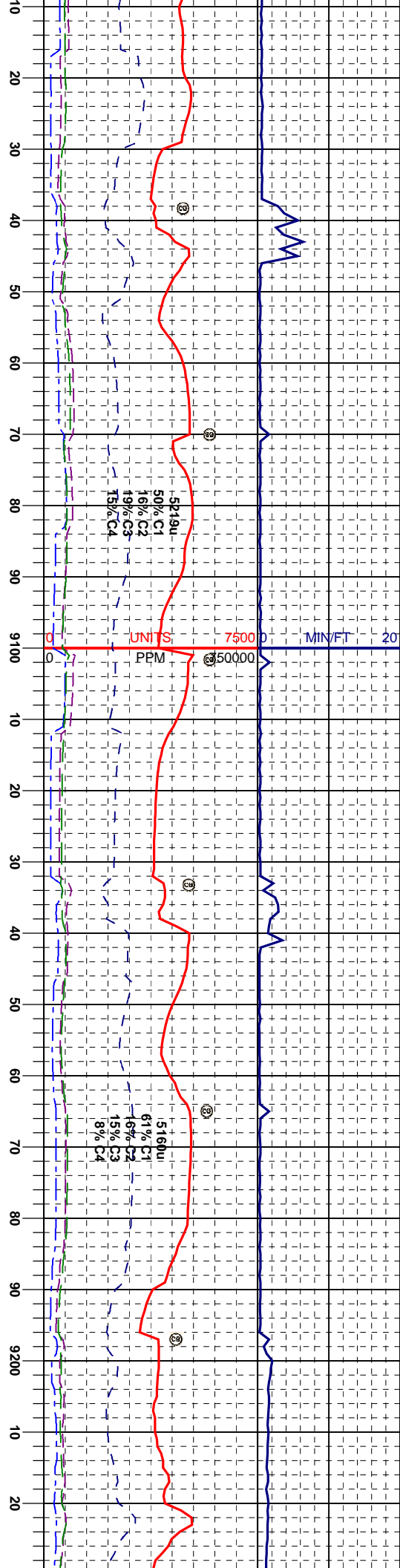
CHK: lt-m gy, occ lt crm, sft & brit, sb ply,
rthy - gsy lstr, mot lam tex, v calc, w/ scat lt
yel chk flr.
MRL: m-dk gy, frm, brit, sb blk, rthy-sb gsy
lstr, mot & sply tex, tr sec calcite, sl tr dism
pyr, tr bent, mod od, fast smg bt yel cut, bt
yel UV stn, lt-m brn wh lt stn.

CHK: lt-m gy, occ
rthy - gsy lstr, mot
yel chk flr.
MRL: m-dk gy, frm
lstr, mot & sply tex
pyr, tr bent, mod c
yel UV stn, lt-m br

1801.5

1801.5





STRONG HC ODOR @ SHAKERS
FAIR OIL ON SHAKERS

MD 9061'
INC 90.99°
AZM 180.49°
TVD 6212.19'

MUD WT 9.2V/S 30

STRONG HC ODOR @ SHAKERS
FAIR OIL ON SHAKERS

MD 9157'
INC 91.67°
AZM 180.11°
TVD 6209.95'

MUD W

MD 9220'
INC 91.91°
AZM 179.86°
TVD 6208.00'

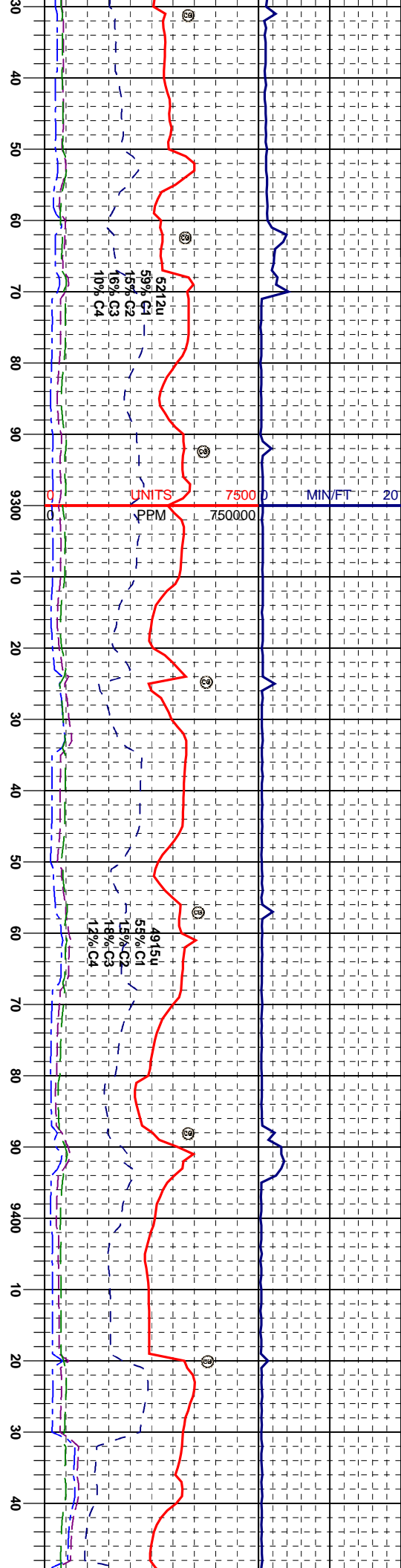
hy - gsy	CHK: lt-m gy, crm, sft & brit, sb ply, rthy - gsy	CHK: lt-m gy, crm, sft & brit, sb ply, rthy - gsy	CHK: lt-m gy, crm, sft & brit, sb ply, rthy - gsy	CHK: lt-m gy, crm, sft & brit, sb ply, rthy - gsy
flor,	istr, mot sp tex, v calc, w/ scat lt yel chk flr,	istr, mot sp tex, v calc, w/ scat lt yel chk flr,	istr, mot sp tex, v calc, w/ scat lt yel chk flr,	istr, mot sp tex, v calc, w/ scat lt yel chk flr,
-sb gsy	MRL: m-dk gy, frm, brit, sb biky, rthy-sb gsy	MRL: m-dk gy, frm, brit, sb biky, rthy-sb gsy	MRL: m-dk gy, frm, brit, sb biky, rthy-sb gsy	MRL: m-dk gy, frm, brit, sb biky, rthy-sb gsy
t, mod	istr, mot & sp tex, sl tr dism pyr, tr bent, mod	istr, mot & sp tex, sl tr dism pyr, tr bent, mod	istr, mot & sp tex, sl tr dism pyr, tr bent, mod	istr, mot & sp tex, sl tr dism pyr, tr bent, mod
lt-m brn	od, fast sting bt yel cut, bt yel UV sin, lt-m brn	od, fast sting bt yel cut, bt yel UV sin, lt-m brn	od, fast sting bt yel cut, bt yel UV sin, lt-m brn	od, fast sting bt yel cut, bt yel UV sin, lt-m brn
wh lt sin.	wh lt sin.	wh lt sin.	wh lt sin.	wh lt sin.

ft

61700 apt 300

1801.5

1801.5

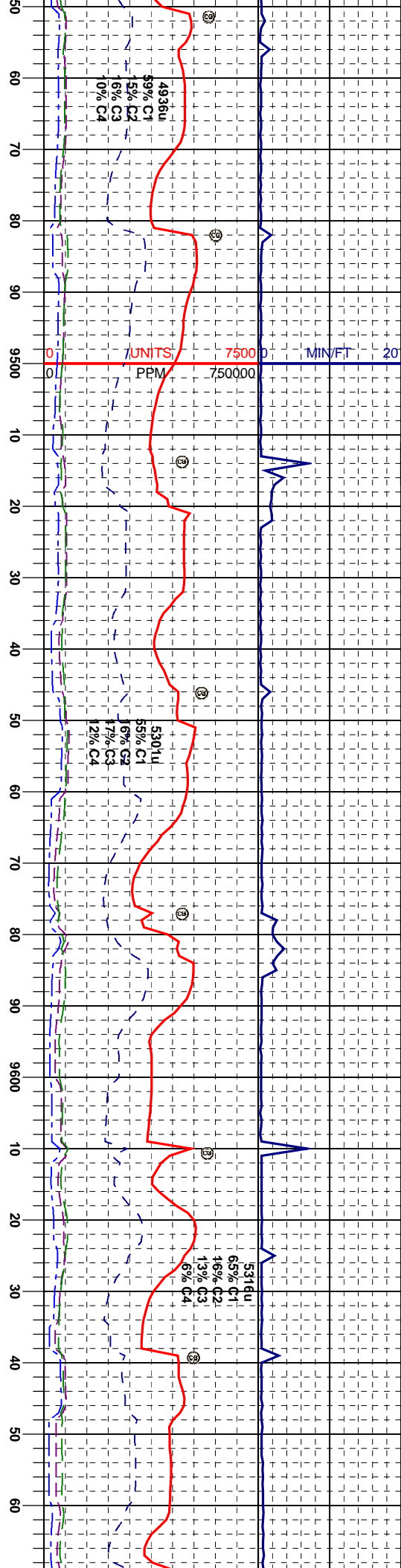


9.2MIS 30		MUD WT 9.2+MIS 30		MUD WT 9.25/MIS 30	
STRONG HC ODOR @ SHAKERS FAIR OIL ON SHAKERS		STRONG HC ODOR @ SHAKERS FAIR OIL ON SHAKERS		STRONG HC ODOR @ SHAKERS FAIR OIL ON SHAKERS	
MD 9284' INC 90.49° AZM 180.11° TVD 6206.65'		MD 9347' INC 90.80° AZM 180.26° TVD 6205.94'		MD 9410' INC 89.69° AZM 180.69° TVD 6205.67'	

It gy -off wh, occ cin wh, sft & brt, sb rthy lstr, sply tex, v calc, w/ scat lt yel pr.	CHK: It gy -off wh, occ cin wh, sft & brt, sb ply, rthy lstr, sply tex, v calc, w/ scat lt yel chk flr.	MRL: m-dk gy, frm, brt, sb blk, rthy-sb gsy lstr, mot & sply tex, tr sec calcite, tr dism & nod pyr, tr bent	CHK: It gy -off wh, occ cin wh, sft & brt, sb ply, rthy lstr, sply tex, v calc, w/ scat lt yel chk flr, mod od, fast string bt yel cut, bt yel UV str, lt-m brn wh lt sin.
m-dk gy, frm, brt, sb blk, rthy-sb gsy mot & sply tex, tr sec calcite, tr dism & nod pyr, tr bent, mod od, fast string bt yel cut, UV str, lt-m brn wh lt sin.	CHK: It gy -off wh, occ cin wh, sft & brt, sb ply, rthy lstr, sply tex, v calc, w/ scat lt yel chk flr.	MRL: m-dk gy, frm, brt, sb blk, rthy-sb gsy lstr, mot & sply tex, tr sec calcite, tr dism & nod pyr, tr bent	CHK: It gy -off wh, occ cin wh, sft & brt, sb ply, rthy lstr, sply tex, v calc, w/ scat lt yel chk flr, mod od, fast string bt yel cut, bt yel UV str, lt-m brn wh lt sin.

180G

180G



FOR @ SHAKERS
AKERS

STRONG HC ODOR @ SHAKERS
FAIR OIL ON SHAKERS

STRONG HC ODOR @ SHAKER
FAIR OIL ON SHAKERS

MD 9473'
INC 90.87°
AZM 180.93°
TVD 6205.36'

MD 9536'
INC 90.43°
AZM 180.80°
TVD 6204.65'

MD 9599'
INC 89.63°
AZM 181.58°
TVD 6204.62'

MD 9661'
INC 90.37°
AZM 181.57°
TVD 6204.62'

MD 9473' INC 90.87° AZM 180.93° TVD 6205.36'

MD 9536' INC 90.43° AZM 180.80° TVD 6204.65'

MD 9599' INC 89.63° AZM 181.58° TVD 6204.62'

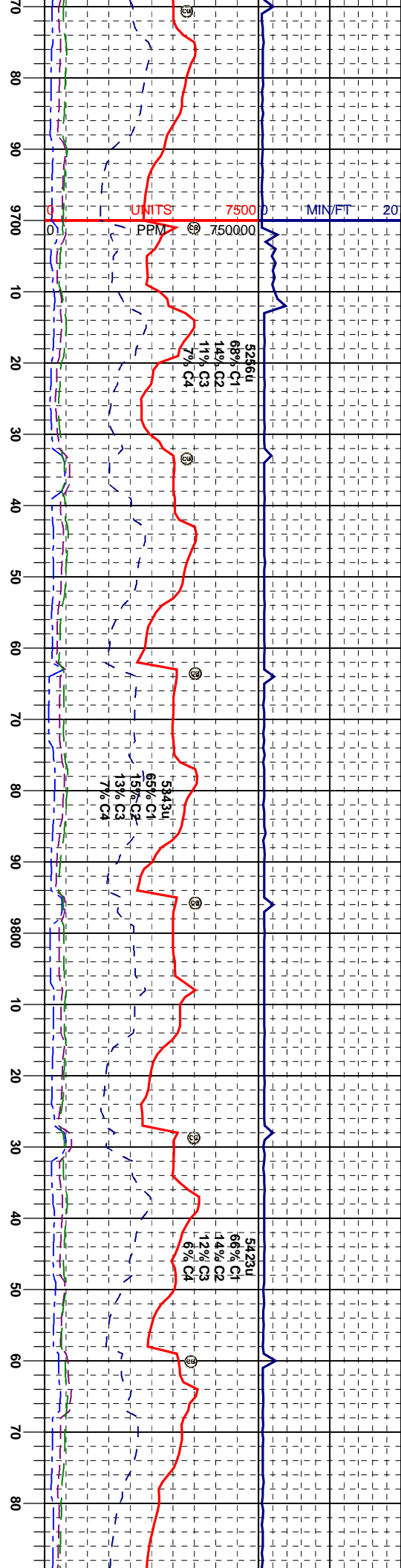
MD 9661' INC 90.37° AZM 181.57° TVD 6204.62'

MR. m-dk gy, frm, brit, sb blk, rthy-sb gsy
lsr, mot & spy tex.
CHK: It gy -off wh, occ cin wh, sft & brit, sb
ply, rthy lsr, spy tex, v calc, w/ scat It yel
chk flor, sl tr dsm, tr bent, mod od, fast string
bt yel cut, bt yel UV str, lt-m brn wh It sin.

MR. m-dk gy, frm, brit, sb blk, rthy-sb gsy
lsr, mot & spy tex.
CHK: It gy -off wh, occ cin wh, sft & brit, sb
ply, rthy lsr, spy tex, v calc, w/ scat It yel
chk flor, sl tr dsm pyf, mod od, fast string bt
yel cut, bt yel UV str, lt-m brn wh It sin.

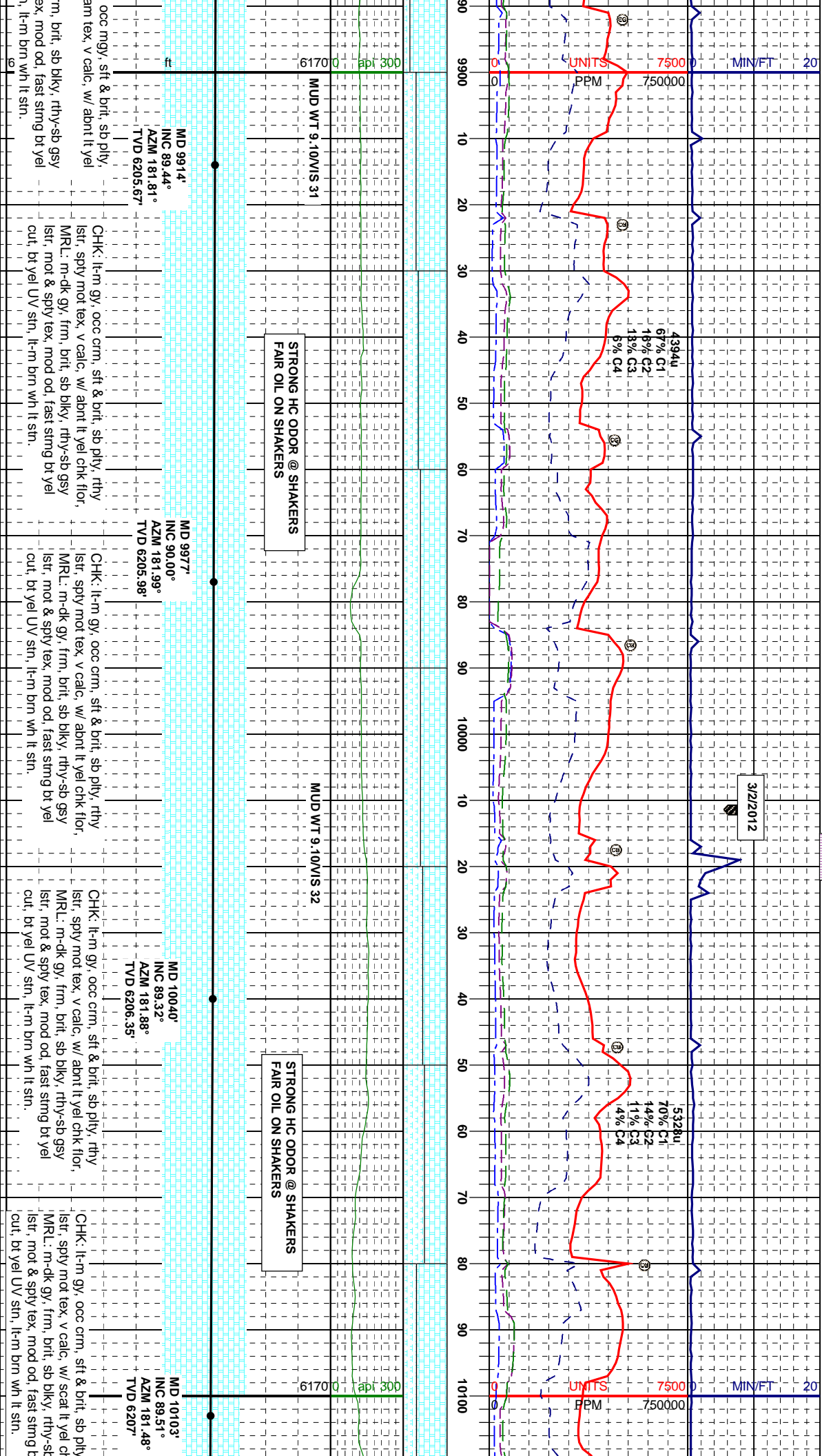
MR. m-dk gy, frm, brit, sb blk, rthy-sb gsy
lsr, mot & spy tex, mod od, fast string bt yel
cut, bt yel UV str, lt-m brn wh It sin.

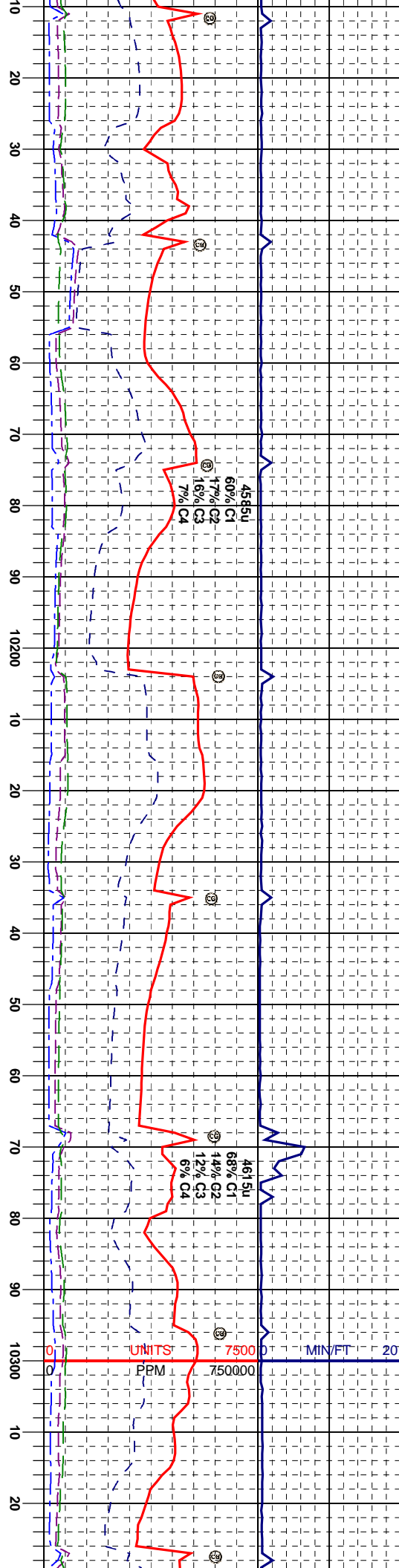
MR. m-dk gy, frm, brit, sb blk, rthy-sb gsy
lsr, mot & spy tex, mod od, fast string bt yel
cut, bt yel UV str, lt-m brn wh It sin.



MUD WT 9.10/MIS 31		MUD WT 9.10/MIS 32	
STRONG HC ODOR @ SHAKERS FAIR OIL ON SHAKERS		STRONG HC ODOR @ SHAKERS FAIR OIL ON SHAKERS	
MD 9724' INC 89.57° AZM 181.35° TVD 6204.65'		MD 9787' INC 89.75° AZM 181.62° TVD 6205.02'	
MD 9851 INC 89.81° AZM 181.10° TVD 6205.27'			

CHK: It gy -off wh, occ It crm, sft & brit, sb ply, rthy lstr, spy tex, v calc, w/ about It yel chk flr,	CHK: It gy -off wh, occ It crm, sft & brit, sb ply, rthy lstr, spy tex, v calc, w/ about It yel chk flr,	CHK: It gy - crm, occ mgy, sft & brit, sb ply, rthy lstr, spy sl lam tex, v calc, w/ about It yel chk flr,	CHK: It gy - crm, rthy lstr, spy sl l
MRL: m-dk gy, frm, brit, sb blk, rthy-sb gsy lstr, mot & spy tex, mod od, fast stmg bt yel cut, bt yel UV str, lt-m brn wh It sin.	MRL: m-dk gy, frm, brit, sb blk, rthy-sb gsy lstr, mot & spy tex, sl tr sec calcite, mod od, fast stmg bt yel cut, bt yel UV str, lt-m brn wh It sin.	MRL: m-dk gy, frm, brit, sb blk, rthy-sb gsy lstr, mot & spy tex, tr sec calcite, sl tr bent, mod od, fast stmg bt yel cut, bt yel UV str, lt- m brn wh It sin.	MRL: m-dk gy, fr lstr, mot & spy t cut, bt yel UV str





STRONG HC ODOR @ SHAKERS
FAIR OIL ON SHAKERS

MUD WT 9.10/VIS 32

STRONG HC ODOR @ SHAKERS
FAIR OIL ON SHAKERS

MUD WT 9.10/VIS 32

MD 10164'
INC 89.32°
AZM 181.44°
TVD 6207.62'

MD 10225'
INC 89.26°
AZM 181.57°
TVD 6208.38'

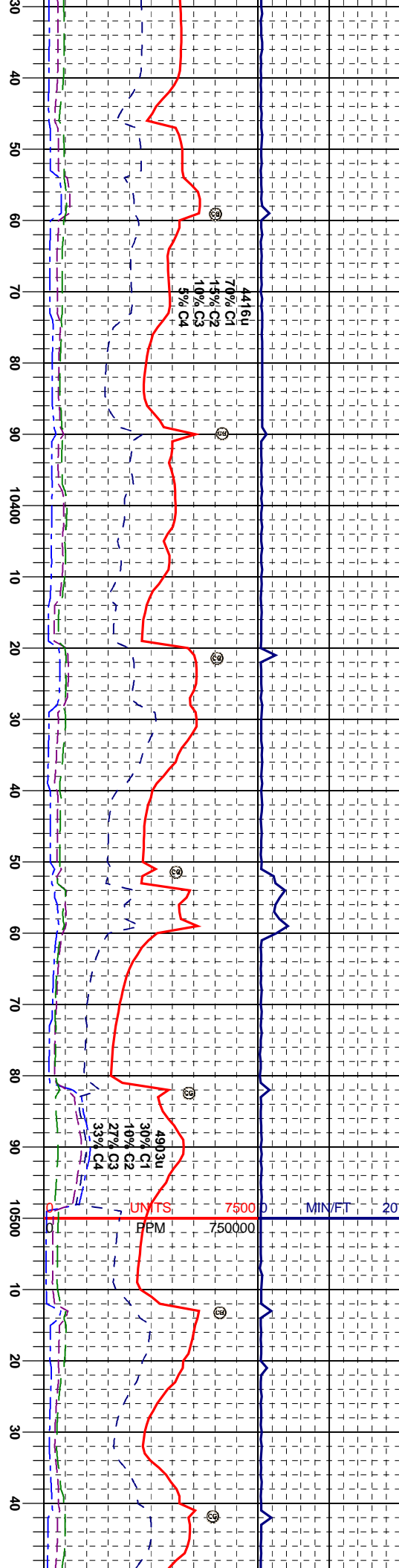
MD 10285'
INC 89.13°
AZM 181.79°
TVD 6209.26'

CHK: lt-m gy, occ crm, sft & brit, sb ply, rthy
istr, sply mot tex, v calc, w/ scat lt yel chk flor,
MR.L: m-dk gy, frm, brit, sb biky, rthy-sb gsy
istr, mot & sply tex, mod od, fast string bt yel
cut, bt yel UV sin, lt-m brn wh lt sin.

CHK: ltgy - crm, occ mgy, sft & brit, sb ply,
rthy istr, sply mot tex, v calc, w/ about lt yel chk
flor,
MR.L: m-dk gy, frm, brit, sb biky, rthy-sb gsy
istr, mot & sply tex, tr sec calcite, mod od,
fast string bt yel cut, bt yel UV sin, lt-m brn wh
lt sin.

CHK: ltgy - crm, occ mgy, sft & brit, sb ply,
rthy istr, sply mot tex, v calc, w/ about lt yel chk
flor,
MR.L: m-dk gy, frm, brit, sb biky, rthy-sb gsy
istr, mot & sply tex, tr sec calcite, mod od,
fast string bt yel cut, bt yel UV sin, lt-m brn wh
lt sin.

CHK: ltgy - crm, occ mgy, sft & brit, sb ply,
rthy istr, sply mot tex, v calc, w/ about lt yel chk
flor,
MR.L: m-dk gy, frm, brit, sb biky, rthy-sb gsy
istr, mot & sply tex, tr sec calcite, mod od,
fast string bt yel cut, bt yel UV sin, lt-m brn wh
lt sin.



STRONG HC ODOR @ SHAKERS
FAIR OIL ON SHAKERS

MUD WT 9.20/VIS 33

STRONG HC ODOR @ SHAKERS
TRACE OIL ON SHAKERS

MD 10473'
INC 89.81°
AZM 181.02°
TVD 6211.56'

MUD WT 9.20/VIS 34

MD 10532'
INC 90.37°
AZM 181.68°
TVD 6211.46'

STR
TRA

MD 10349'
INC 89.20°
AZM 181.53°
TVD 6210.15'

CHK: lly - crm, occ mgy, sft & brit, sb ply,
rthy lstr, spy mot tex, v calc, w/ abnt lt yel chk
flor.

MR.L: m-dk gy, frm, brit, sb blkly, rthy-sb gsy
lstr, mot & spy tex, tr sec calcite, mod od,
fast stmg bt yel cut, bt yel UV sin, lt-m brn wh
lt sin.

MD 10411'
INC 89.20°
AZM 181.68°
TVD 6211.02'

CHK: lly - crm, occ mgy, sft & brit, sb ply,
rthy lstr, spy mot tex, v calc, w/ abnt lt yel chk
flor.

MR.L: m-dk gy, frm, brit, sb blkly, rthy-sb gsy
lstr, mot & spy tex, tr sec calcite, mod od,
fast stmg bt yel cut, bt yel UV sin, lt-m brn wh
lt sin.

CHK: lly - crm, occ mgy, sft & brit, sb ply,
rthy lstr, spy mot tex, v calc, w/ abnt lt yel chk
flor.

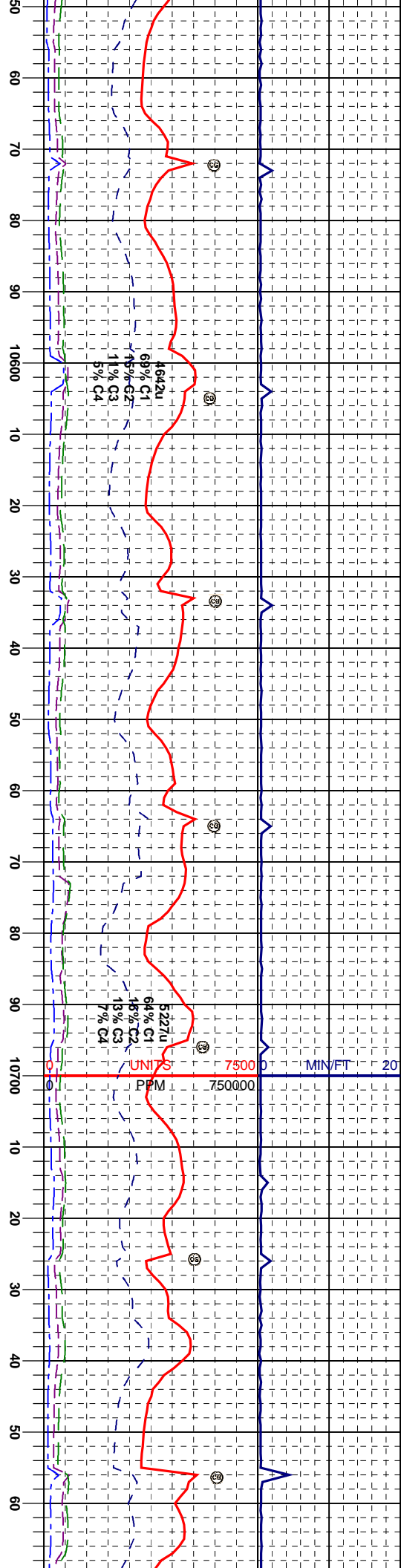
MR.L: m-dk gy, frm, brit, sb blkly, rthy-sb gsy
lstr, mot & spy tex, tr sec calcite, mod od,
fast stmg bt yel cut, bt yel UV sin, lt-m brn wh
lt sin.

CHK: lly - crm, occ mgy, sft & brit, sb ply,
rthy lstr, spy mot tex, v calc, w/ abnt lt yel chk
flor.

MR.L: m-dk gy, frm, brit, sb blkly, rthy-sb gsy
lstr, mot & spy tex, tr sec calcite, mod od,
fast stmg bt yel cut, bt yel UV sin, lt-m brn wh
lt sin.

CHK: lly - crm, occ mgy, sft & brit, sb ply,
rthy lstr, spy mot tex, v calc, w/ abnt lt yel chk
flor.

MR.L: m-dk gy, frm, brit, sb blkly, rthy-sb gsy
lstr, mot & spy tex, tr sec calcite, mod od,
fast stmg bt yel cut, bt yel UV sin, lt-m brn wh
lt sin.



ONG HC ODOR @ SHAKERS
CE OIL ON SHAKERS

MUD WT 9.20/VIS 33

MD 10593'
INC 90.62°
AZM 181.53°
TVD 6210.93'

STRONG HC ODOR @ SHAKERS
TRACE OIL ON SHAKERS

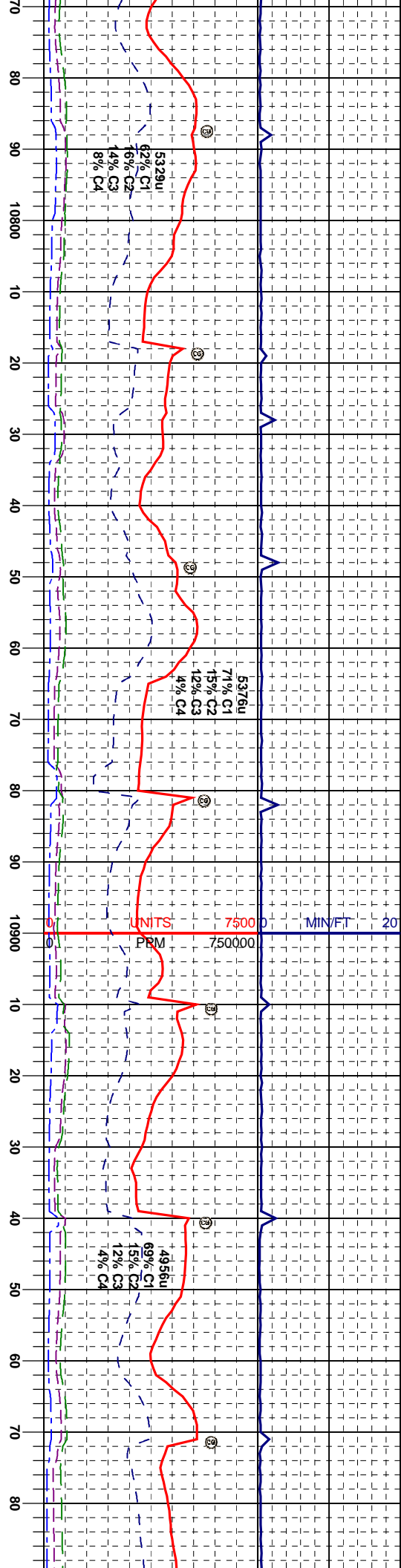
MD 10655'
INC 90.49°
AZM 180.79°
TVD 6210.33'

MUD WT 9.20/VIS 33

MD 10716'
INC 90.19°
AZM 180.24°
TVD 6209.97'

STRONG HC ODOR @ SHAKERS
TRACE OIL ON SHAKERS

occ mgy, sft & brit, sb ply, tex, v calc, w/ about lt yel chk flor.	CHK: lty - crm, occ mgy, sft & brit, sb ply, rthy lstr, spy mot tex, v calc, w/ about lt yel chk flor.	MRL: m-dk gy, frm, brit, sb biky, rthy-sb gsy lstr, mot & spy tex, tr sec calcite, mod od, fast stmg bt yel cut, bt yel UV str, lt-m brn wh lt sin.
occ mgy, sft & brit, sb ply, tex, v calc, w/ about lt yel chk flor.	CHK: lty - crm, occ mgy, sft & brit, sb ply, rthy lstr, spy mot tex, v calc, w/ about lt yel chk flor.	MRL: m-dk gy, frm, brit, sb biky, rthy-sb gsy lstr, mot & spy tex, tr sec calcite, mod od, fast stmg bt yel cut, bt yel UV str, lt-m brn wh lt sin.
occ mgy, sft & brit, sb ply, tex, v calc, w/ about lt yel chk flor.	CHK: lty - crm, occ mgy, sft & brit, sb ply, rthy lstr, spy mot tex, v calc, w/ about lt yel chk flor.	MRL: m-dk gy, frm, brit, sb biky, rthy-sb gsy lstr, mot & spy tex, tr sec calcite, mod od, fast stmg bt yel cut, bt yel UV str, lt-m brn wh lt sin.



MD 10778'
INC 90.31°
AZM 180.70°
TVD 6209.70'

MUD WT 9.20/VIS 34

STRONG HC ODOR @ SHAKERS
TRACE OIL ON SHAKERS

MD 10839'
INC 90.49°
AZM 179.81°
TVD 6209.28'

61700 apt 300

MD 10900'
INC 90.19°
AZM 179.94°
TVD 6208.91'

MUD WT 9.10/VIS 33

STRONG HC ODOR @ SHAKERS
FAIR OIL ON SHAKERS

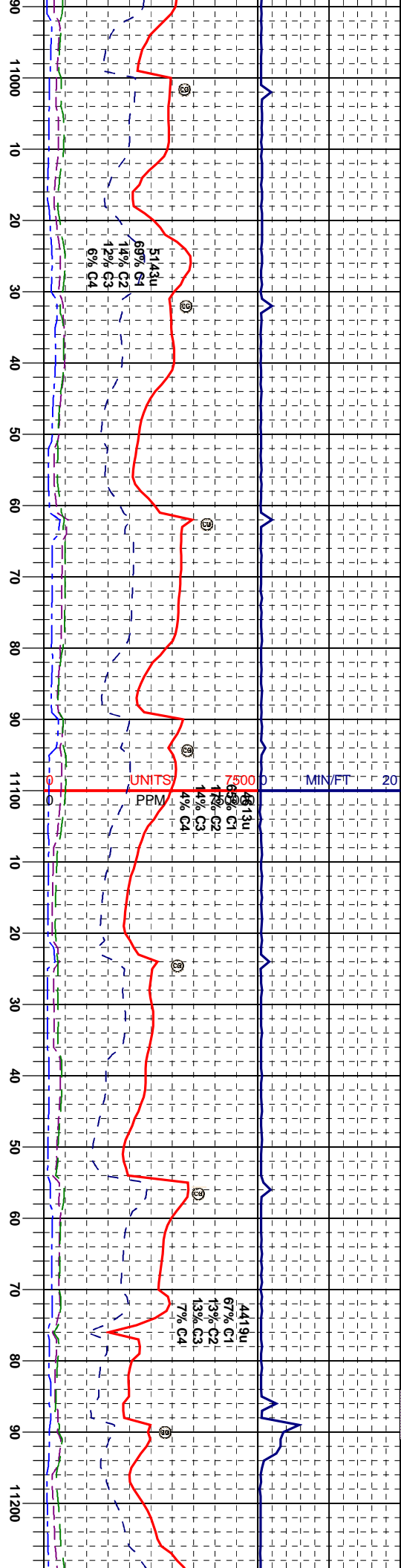
MD 10961'
INC 90.25°
AZM 179.03°
TVD 6208.68'

bit, sb ply,
about lt yel chk
rthy-sb gsy
e, mod od,
tn, lt-m brn wh
CHK: llyg - crm, occ mgy, sft & brit, sb ply,
rthy lstr, spy mot tex, v calc, w/ about lt yel chk
flor.
MR.L: m-dk gy, frm, brit, sb blkly, rthy-sb gsy
lstr, mot & spy tex, tr sec calcite, mod od,
fast stmg bt yel cut, bt yel UV sin, lt-m brn wh
lt sin.

CHK: llyg - crm, occ mgy, sft & brit, sb ply,
rthy lstr, spy mot tex, v calc, w/ about lt yel chk
flor.
MR.L: m-dk gy, frm, brit, sb blkly, rthy-sb gsy
lstr, mot & spy tex, tr sec calcite, mod od,
fast stmg bt yel cut, bt yel UV sin, lt-m brn wh
lt sin.

CHK: llyg - crm, occ mgy, sft & brit, sb ply,
rthy lstr, spy mot tex, v calc, w/ about lt yel chk
flor.
MR.L: m-dk gy, frm, brit, sb blkly, rthy-sb gsy
lstr, mot & spy tex, tr dism pyr, tr sec calcite,
mod od, fast stmg bt yel cut, bt yel UV sin, lt-
m brn wh lt sin.

CHK: llyg - crm, occ mgy, sft & brit, sb ply,
rthy lstr, spy mot tex, v calc, w/ about lt yel chk
flor.
MR.L: m-dk gy, frm, brit, sb blkly, rthy-sb gsy
lstr, mot & spy tex, tr dism pyr, tr sec calcite,
mod od, fast stmg bt yel cut, bt yel UV sin, lt-
m brn wh lt sin.



MUD WT 9.10+VIS 33
MD 11022'
INC 90.19°
AZM 178.75°
TVD 6208.45'

STRONG HC ODOR @ SHAKERS
FAIR OIL ON SHAKERS

MD 11084'
INC 90.00°
AZM 178.06°
TVD 6208.35'

MUD WT 9.10/VIS 33
MD 11146'
INC 90.25°
AZM 177.89°
TVD 6208.21'

STRONG HC ODOR @ SHAKERS
MODERATE OIL ON SHAKERS

MD 11207'
INC 90.74°
AZM 178.°
TVD 6207'

CHK: llyg - crm, occ mgy, sft & brit, sb ply,
rthy lstr, spy mot tex, v calc, w/ abnt lt yel chk
flor.
MRL: m-dk gy, frm, brit, sb biky, rthy-sb gt
lstr, mot & spy tex, tr dism pyr, tr sec calcite,
mod od, fast sting bt yel cut, bt yel UV sn, lt-
m brn wh lt sn.

CHK: llyg - crm, occ mgy, sft & brit, sb ply,
rthy lstr, spy mot tex, v calc, w/ abnt lt yel chk
flor.
MRL: m-dk gy, frm, brit, sb biky, rthy-sb gt
lstr, mot & spy tex, tr dism pyr, tr sec calcite,
mod od, fast sting bt yel cut, bt yel UV sn, lt-
m brn wh lt sn.

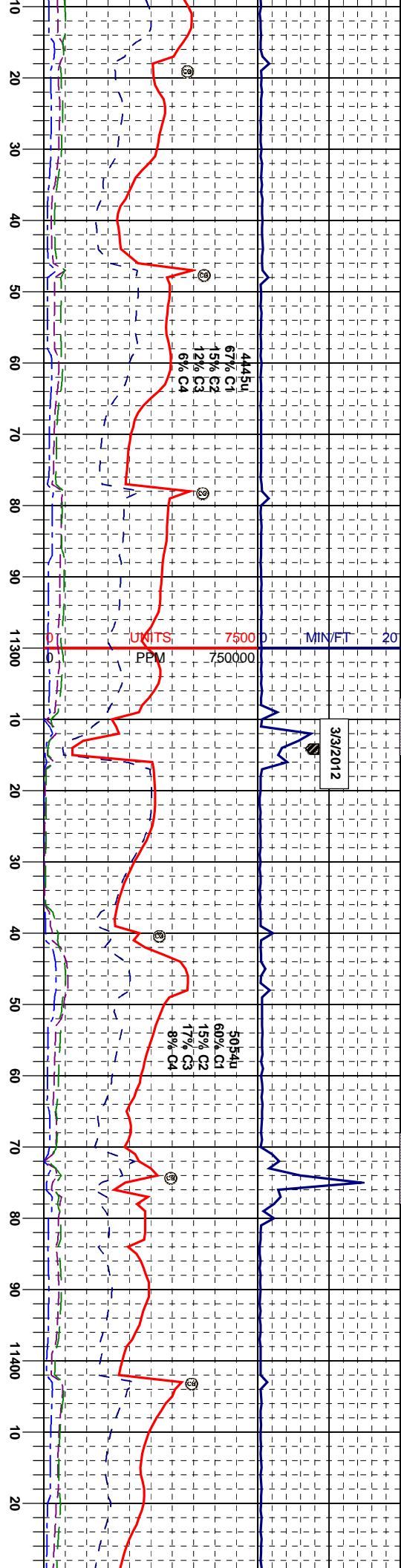
CHK: llyg - crm, occ mgy, sft & brit, sb ply,
rthy lstr, spy mot tex, v calc, w/ abnt lt yel chk
flor.
MRL: m-dk gy, frm, brit, sb biky, rthy-sb gt
lstr, mot & spy tex, tr dism pyr, tr sec calcite,
mod od, fast sting bt yel cut, bt yel UV sn, lt-
m brn wh lt sn.

CHK: llyg - crm, occ mgy, sft & brit, sb ply,
rthy lstr, spy mot tex, v calc, w/ abnt lt yel chk
flor.
MRL: m-dk gy, frm, brit, sb biky, rthy-sb gt
lstr, mot & spy tex, tr dism pyr, tr sec calcite,
mod od, fast sting bt yel cut, bt yel UV sn, lt-
m brn wh lt sn.

CHK: llyg - crm, c
rthy lstr, spy mot
flor.
MRL: m-dk gy, fr
lstr, mot & spy te
mod od, fast stin
m brn wh lt sn.

90G

160G



STRONG HC ODOR @ SHAKERS
MODERATE OIL ON SHAKERS

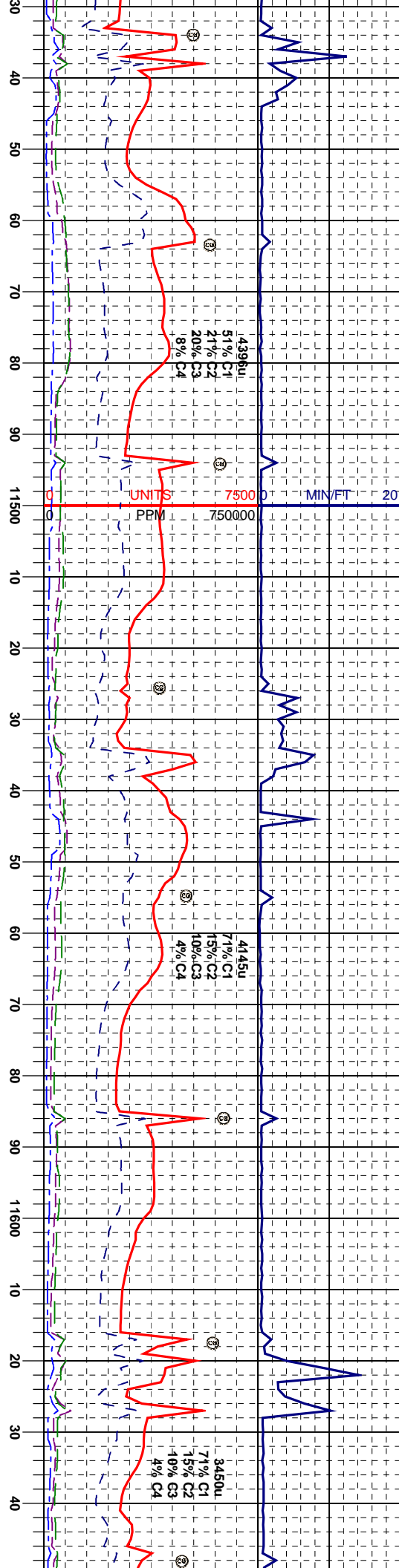
STRONG HC ODOR @ SHAKERS
MODERATE OIL ON SHAKERS

MUD WT 9.10/VIS 33		MUD WT 9.10/VIS 33		MUD WT 9.10/VIS 33	
MD 11269'		MD 11331'		MD 11392'	
INC 90.62°		INC 90.93°		INC 90.68°	
AZM 178.08°		AZM 178.37°		AZM 177.91°	
TVD 6206.95'		TVD 6206.12'		TVD 6205.26'	
CHK: lgy - crm, occ mgy, sft & brit, sb ply, rthy lstr, spy mot tex, v calc, w/ about lt yel chk floor.		CHK: lgy - crm, occ mgy, sft & brit, sb ply, rthy lstr, spy mot tex, v calc, w/ about lt yel chk floor.		CHK: lgy - crm, occ mgy, sft & brit, sb ply, rthy lstr, spy mot tex, v calc, w/ about lt yel chk floor.	
MR.L: m-dk gy, frm, brit, sb blkly, rthy-sb gt lstr, mot & spy tex, tr dism pyr, tr sec calcite, mod od, fast string bt yel cut, bt yel UV sn, lt-m brn wh lt stn.		MR.L: m-dk gy, frm, brit, sb blkly, rthy-sb gt lstr, mot & spy tex, tr dism pyr, tr sec calcite, mod od, fast string bt yel cut, bt yel UV sn, lt-m brn wh lt stn.		MR.L: m-dk gy, frm, brit, sb blkly, rthy-sb gt lstr, mot & spy tex, tr dism pyr, tr sec calcite, mod od, fast string bt yel cut, bt yel UV sn, lt-m brn wh lt stn.	

90R

130R

140R



MUD WT 9.10/VIS 33

STRONG HC ODOR @ SHAKERS
MODERATE OIL ON SHAKERS

MUD WT 9.30/VIS 33

STRONG HC ODOR @ SHAKERS
MODERATE OIL ON SHAKERS

MUD WT 9.10/VIS 33

MD 11453'

INC 90.62°

AZM 178.19°

TVD 6204.56'

CHK: lgy - crm, occ mgy, sft & brit, sb ply, rthy lstr, spy mot tex, v calc, w/ about lt yel chk flor.

MRL: m-dk gy, frm, brit, sb blk, rthy-sb gt lstr, mot & spy tex, tr dism pyr, tr sec calcite, mod od, fast stimg bt yel cut, bt yel UV sin, lt-m brn wh lt sin.

MD 11546'

INC 90.62°

AZM 179.17°

TVD 6203.55'

CHK: lgy - crm, occ mgy, sft & brit, sb ply, rthy lstr, spy mot tex, v calc, w/ about lt yel chk flor.

MRL: m-dk gy, frm, brit, sb blk, rthy-sb gt lstr, mot & spy tex, tr dism pyr, tr sec calcite, mod od, fast stimg bt yel cut, bt yel UV sin, lt-m brn wh lt sin.

MD 11607'

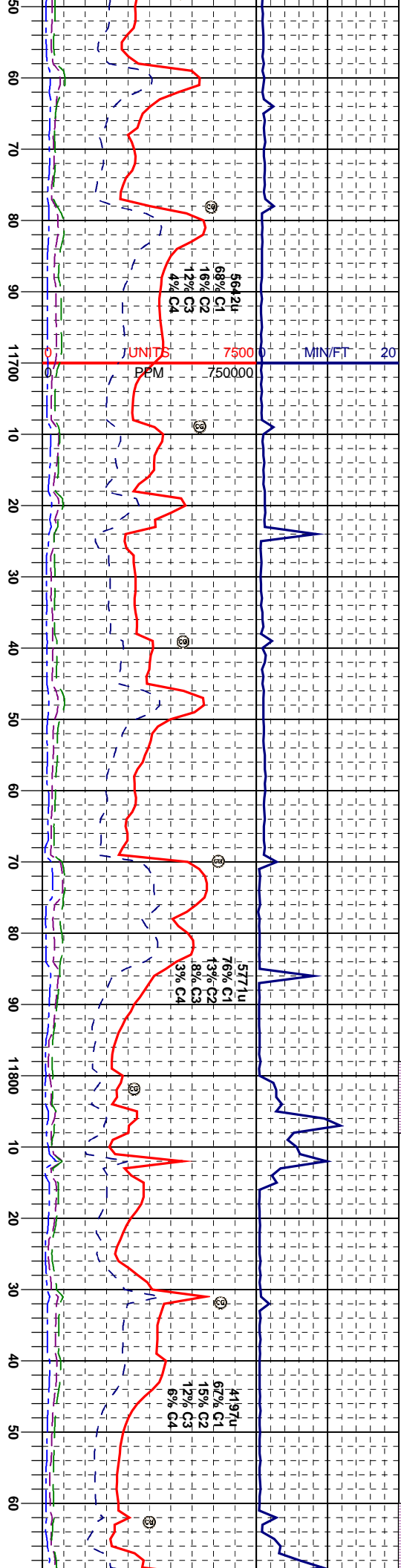
INC 90.43°

AZM 179.87°

TVD 6202.99'

CHK: lgy - crm, occ mgy, sft & brit, sb ply, rthy lstr, spy mot tex, v calc, w/ about lt yel chk flor.

MRL: m-dk gy, frm, brit, sb blk, rthy-sb gt lstr, mot & spy tex, tr dism pyr, tr sec calcite, mod od, fast stimg bt yel cut, bt yel UV sin, lt-m brn wh lt sin.



STRONG HC ODOR @ SHAKERS
MODERATE OIL ON SHAKERS

MUD WT 9.25/MIS 34

STRONG HC ODOR @ SHAKERS
MODERATE OIL ON SHAKERS

MUD WT 9.20/MIS 34

STRONG FAIR OIL

MD 11668'

INC 89.94°

AZM 179.25°

TVD 6202.79'

CHK: lity - crm, occ mgy, sft & brit, sb ply,
rthy lstr, sply mot tex, v calc, w/ about lt yel chk
flor.
MRL: m-dk gy, frm, brit, sb blkly, rthy-sb gt
lstr, mot & sply tex, tr dism pyr, tr sec calcite,
mod od, fast string bt yel cut, bt yel UV str, lt-
m brn wh lt str.

MD 11729'

INC 89.94°

AZM 179.45°

TVD 6202.87'

CHK: lity - crm, occ mgy, sft & brit, sb ply,
rthy lstr, sply mot tex, v calc, w/ about lt yel chk
flor.
MRL: m-dk gy, frm, brit, sb blkly, rthy-sb gt
lstr, mot & sply tex, tr dism pyr, tr sec calcite,
mod od, fast string bt yel cut, bt yel UV str, lt-
m brn wh lt str.

MD 11822'

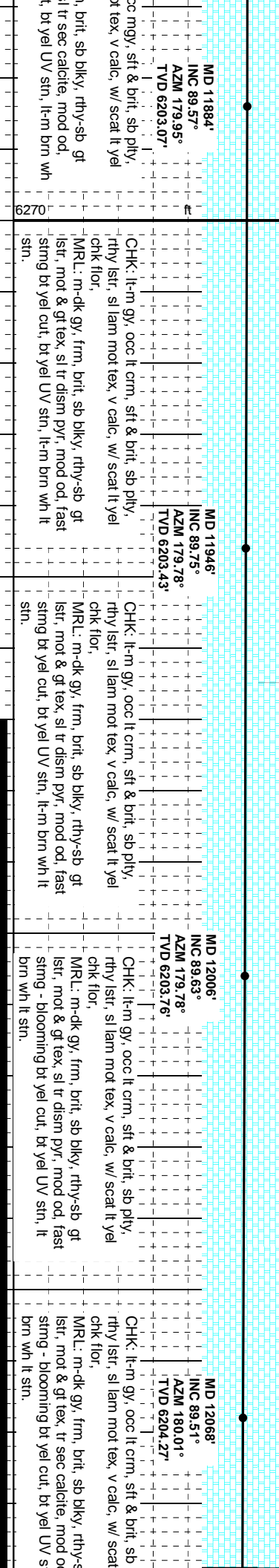
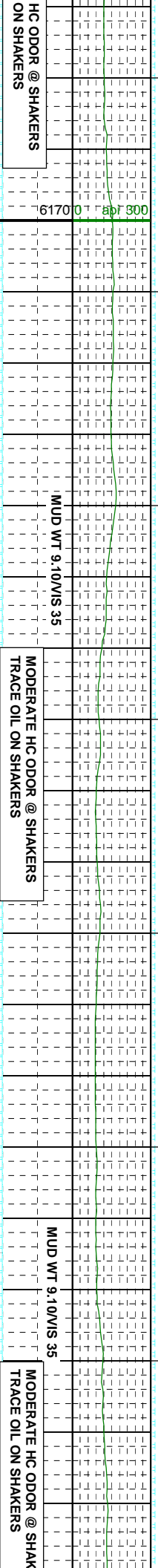
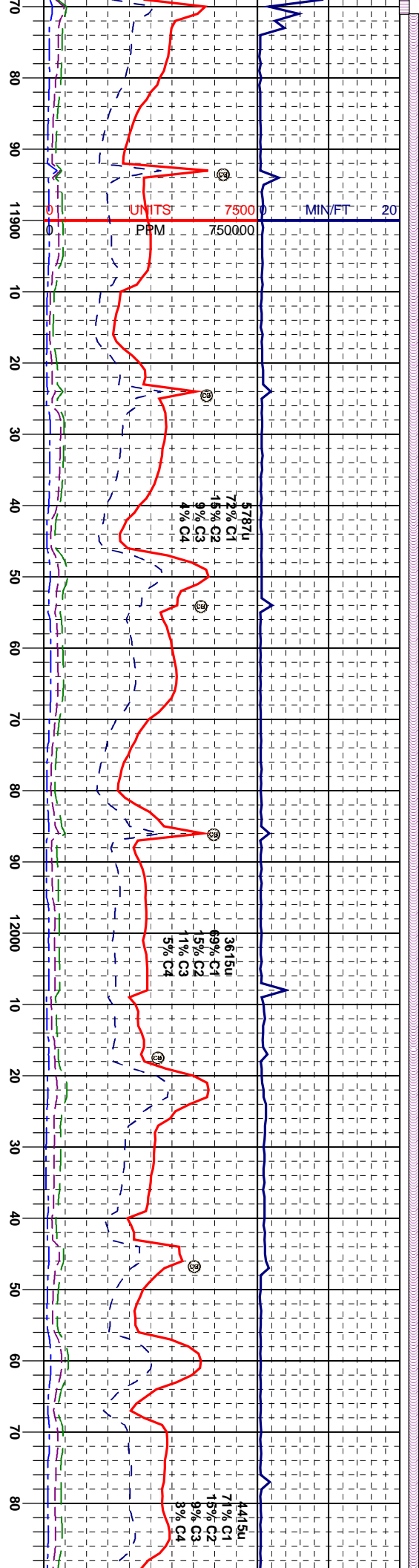
INC 90.06°

AZM 180.05°

TVD 6202.87'

CHK: lity - crm, occ mgy, sft & brit, sb ply,
rthy lstr, spgt mot tex, v calc, w/ scat lt yel chk
flor.
MRL: m-dk gy, frm, brit, sb blkly, rthy-sb gt
lstr, mot & sply tex, sl tr sec calcite, mod od,
fast string bt yel cut, bt yel UV str, lt-m brn wh
lt str.

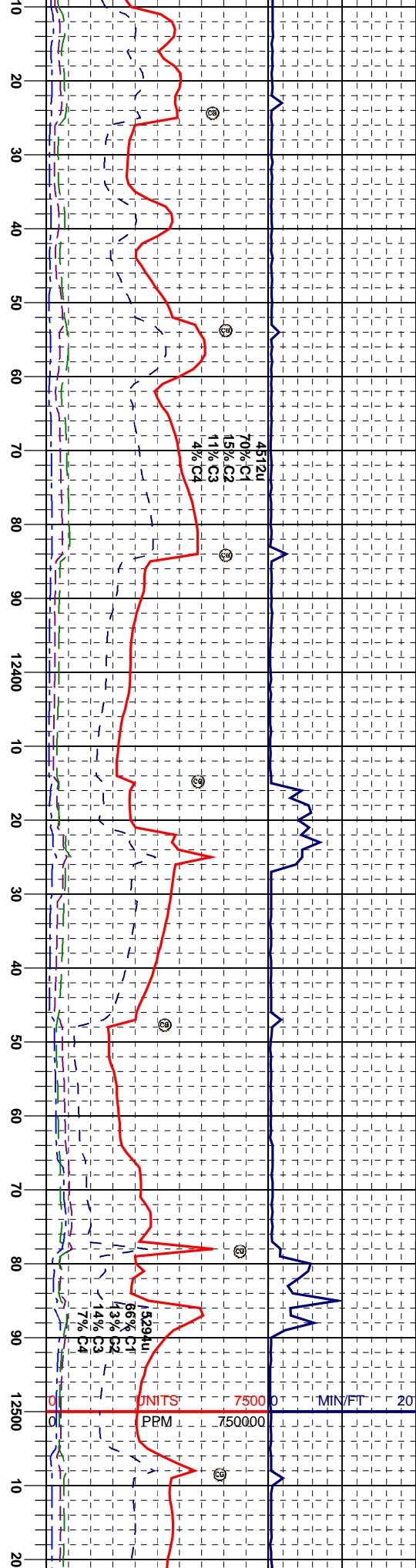
CHK: lity - crm, occ mgy, sft & brit, sb ply,
rthy lstr, sl sply mot tex, v calc, w/ scat lt yel chk
flor.
MRL: m-dk gy, frm, brit, sb blkly, rthy-sb gt
lstr, mot & sply tex, sl tr sec calcite, mod od,
fast string bt yel cut, bt yel UV str, lt-m brn wh
lt str.

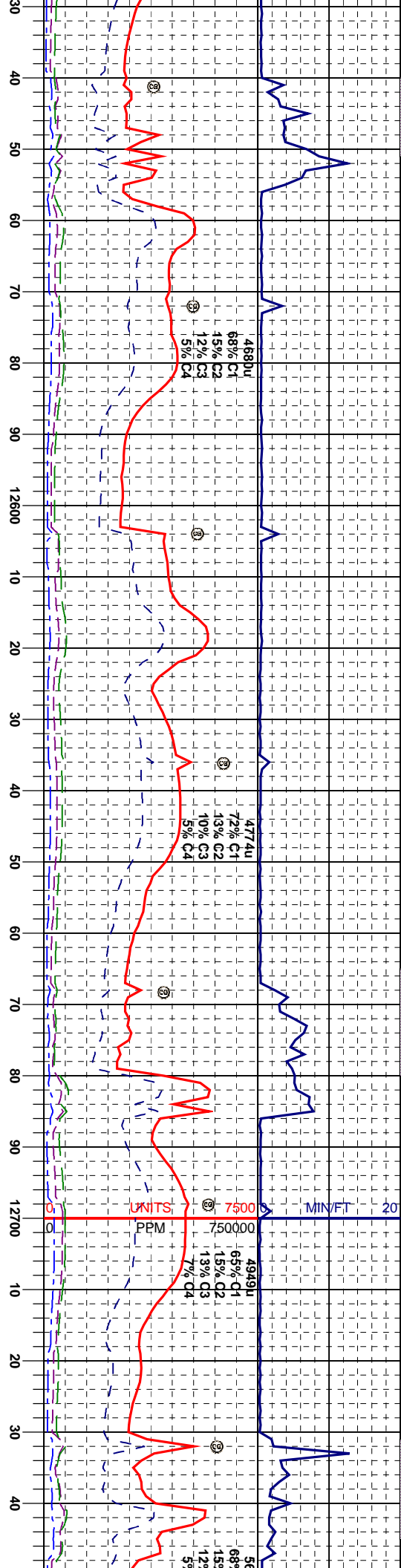


MD 11884'				MD 11946'				MD 12068'				MD 12068'			
INC 89.57°				INC 89.75°				INC 89.63°				INC 89.51°			
AZM 179.95°				AZM 179.78°				AZM 179.78°				AZM 180.01°			
TVD 6203.07'				TVD 6203.43'				TVD 6203.76'				TVD 6204.27'			
CHK: It-m gy, occ It crm, sft & brt, sb ply, rthy lstr, sl lam mot tex, v calc, w/ scat It yel chk flr.				CHK: It-m gy, occ It crm, sft & brt, sb ply, rthy lstr, sl lam mot tex, v calc, w/ scat It yel chk flr.				CHK: It-m gy, occ It crm, sft & brt, sb ply, rthy lstr, sl lam mot tex, v calc, w/ scat It yel chk flr.				CHK: It-m gy, occ It crm, sft & brt, sb ply, rthy lstr, sl lam mot tex, v calc, w/ scat It yel chk flr.			
MR: m-dk gy, frm, brt, sb blk, rthy-sb gt lstr, mot & gt tex, sl tr dism pyr, mod od, fast stmg bt yel cut, bt yel UV stn, lt-m brn wh It stn.				MR: m-dk gy, frm, brt, sb blk, rthy-sb gt lstr, mot & gt tex, sl tr dism pyr, mod od, fast stmg bt yel cut, bt yel UV stn, lt-m brn wh It stn.				MR: m-dk gy, frm, brt, sb blk, rthy-sb gt lstr, mot & gt tex, sl tr dism pyr, mod od, fast stmg - blooming bt yel cut, bt yel UV stn, lt brn wh It stn.				MR: m-dk gy, frm, brt, sb blk, rthy-sb gt lstr, mot & gt tex, tr sec calcite, mod od, stmg - blooming bt yel cut, bt yel UV s			

50G

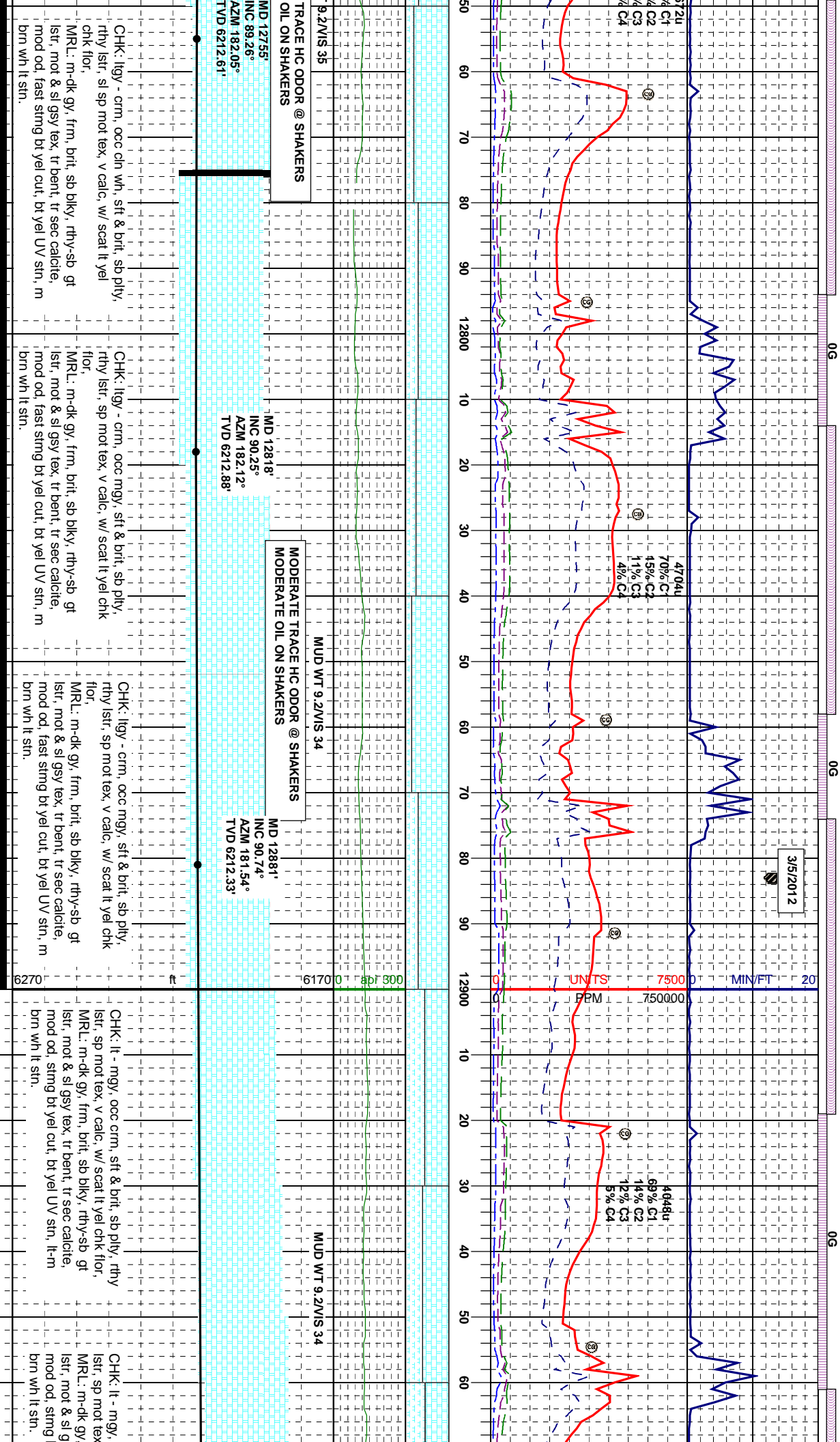
30G





MUD WT 9.25/VIS 43		MUD WT 9.1/VIS 41		MUD WT	
FACE HC ODOR @ SHAKERS		SLIGHT TRACE HC ODOR @ SHAKERS		MODERATE MODERATE	
MD 12563'		MD 12627'		MD 12691'	
INC 89.07°		INC 88.58°		INC 88.95°	
AZM 180.27°		AZM 180.48°		AZM 181.17°	
TVD 6208.92'		TVD 6210.23'		TVD 6211.61'	

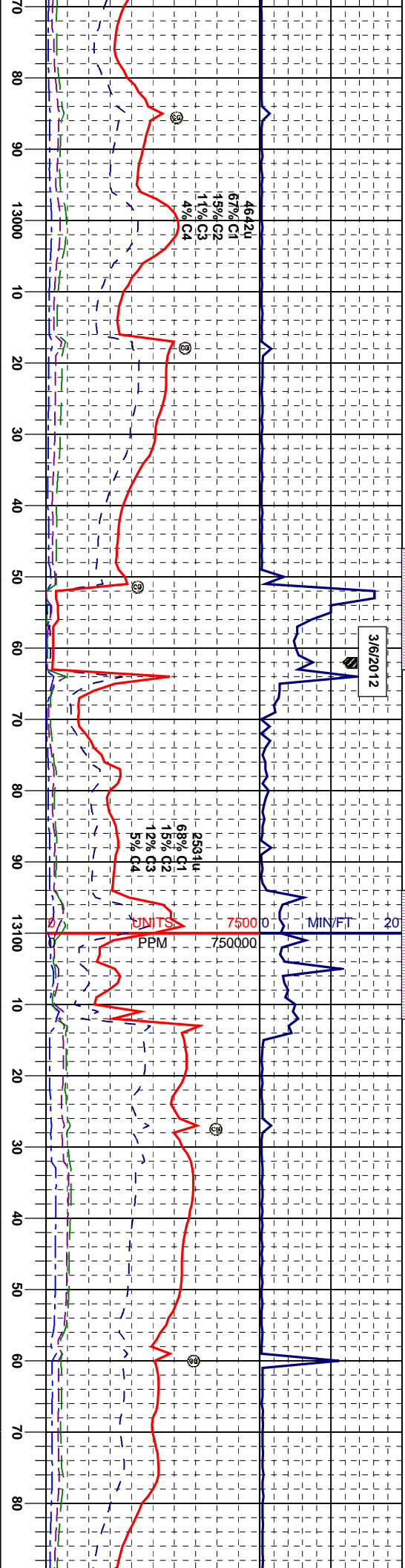
CHK: llyg - crm, occ mgy, sft & brit, sb ply, rthy lstr, sl sp mot tex, v calc, w/ scat lt yel	CHK: llyg - crm, occ mgy, sft & brit, sb ply, rthy lstr, sl sp mot tex, v calc, w/ scat lt yel	CHK: llyg - crm, occ cin wh, sft & brit, sb ply, rthy lstr, sl sp mot tex, v calc, w/ scat lt yel	CHK: llyg - crm, occ cin wh, sft & brit, sb ply, rthy lstr, sl sp mot tex, v calc, w/ scat lt yel
MR: m-dk gy, frm, brit, sb blk, rthy-sb gt lstr, mot & gt tex, tr sec calcite, mod od, fast stmg bt yel cut, bt yel UV sin, m brn wh lt stn.	MR: m-dk gy, frm, brit, sb blk, rthy-sb gt lstr, mot & gt tex, tr sec calcite, mod od, fast stmg bt yel cut, bt yel UV sin, m brn wh lt stn.	MR: m-dk gy, frm, brit, sb blk, rthy-sb gt lstr, mot & sl gsy tex, tr sec calcite, mod od, fast stmg bt yel cut, bt yel UV sin, lt-m brn wh lt stn.	MR: m-dk gy, frm, brit, sb blk, rthy-sb gt lstr, mot & sl gsy tex, tr sec calcite, mod od, fast stmg bt yel cut, bt yel UV sin, m brn wh lt stn.



30G

0G

3/6/2012



MD 12977'
INC 90.56°
AZM 181.33°
TVD 6211.24'

FAIR HC ODOR @ SHAKERS
TRACE OIL ON SHAKERS

MUD WT 9.4/VIS 35

<<<<<<Base Of Target>>>>>>

MD 13063'
INC 90.19°
AZM 181.28°
TVD 6210.73'

MD 13127'
INC 92.35°
AZM 182.24°
TVD 6209.3'

MUD WT 9.4/VIS 35

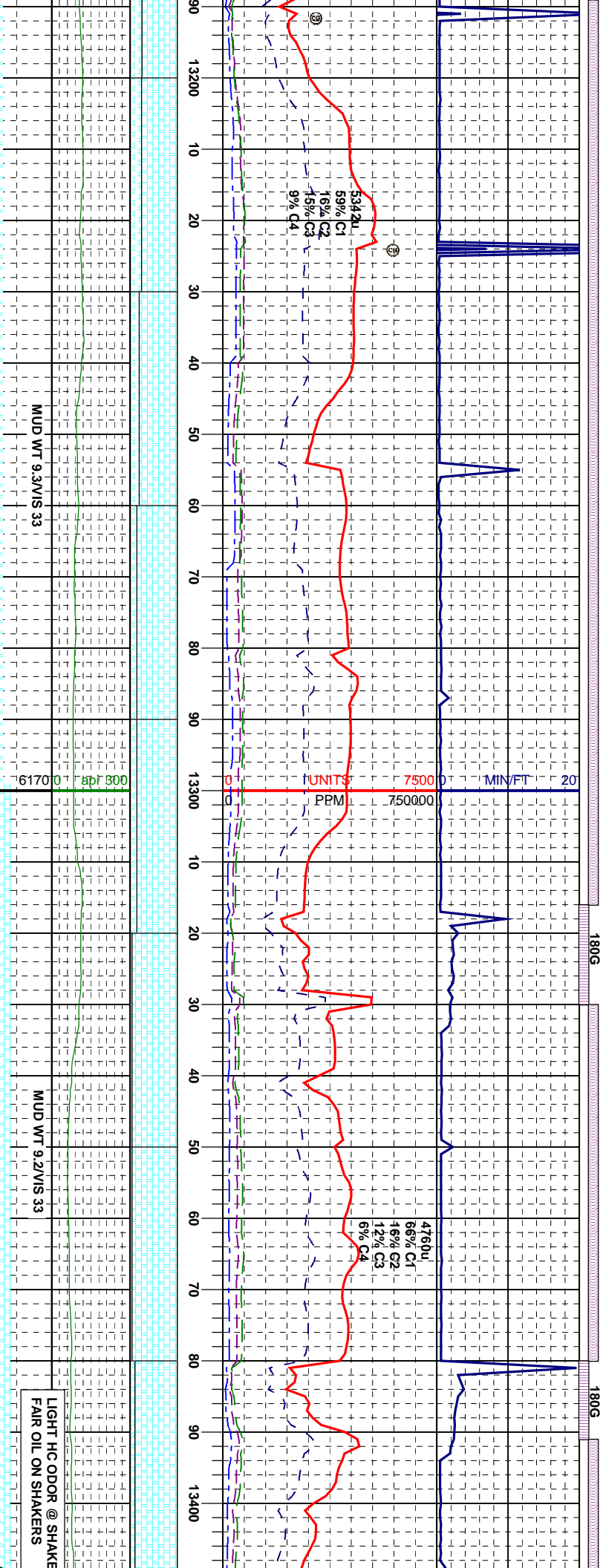
occ crm, sft & brit, sb ply, rthy
v calc, w/ scat lt yel chk flor,
frm, brit, sb biky, rthy-sb gt
isy tex, tr bent, tr sec calcite,
bt yel cut, bt yel UV sin, lt-m

CHK: lt - mgy, occ crm, sft & brit, sb ply, rthy
lsr, sp mot tex, v calc, w/ scat lt yel chk flor,
MR: m-dk gy, frm, brit, sb biky, rthy-sb gt
lsr, mot & sl gsy tex, tr bent, tr sec calcite,
mod od, sting bt yel cut, bt yel UV sin, lt-m
brn wh lt sin.

CHK: lt - mgy, occ crm, sft & brit, sb ply, rthy
lsr, sp mot tex, v calc, w/ scat lt yel chk flor,
MR: m-dk gy, frm, brit, sb biky, rthy-sb gt
lsr, mot & sl gsy tex, tr bent, tr sec calcite,
mod od, sting bt yel cut, bt yel UV sin, lt-m
brn wh lt sin.

CHK: lt - mgy, occ crm, sft & brit, sb ply, rthy
lsr, sp mot tex, v calc, w/ scat lt yel chk flor,
MR: m-dk gy, frm, brit, sb biky, rthy-sb gt
lsr, mot & sl gsy tex, tr bent, tr sec calcite,
mod od, sting bt yel cut, bt yel UV sin, lt-m
brn wh lt sin.

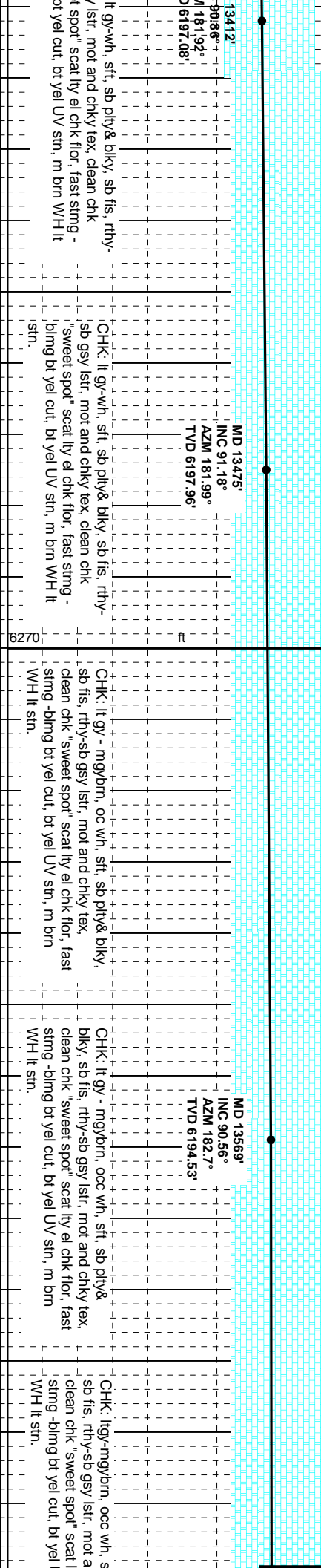
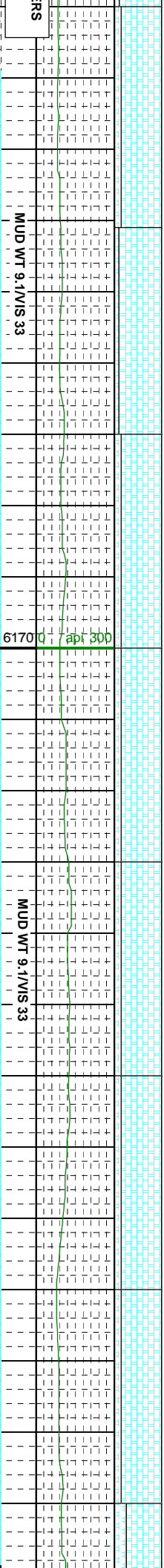
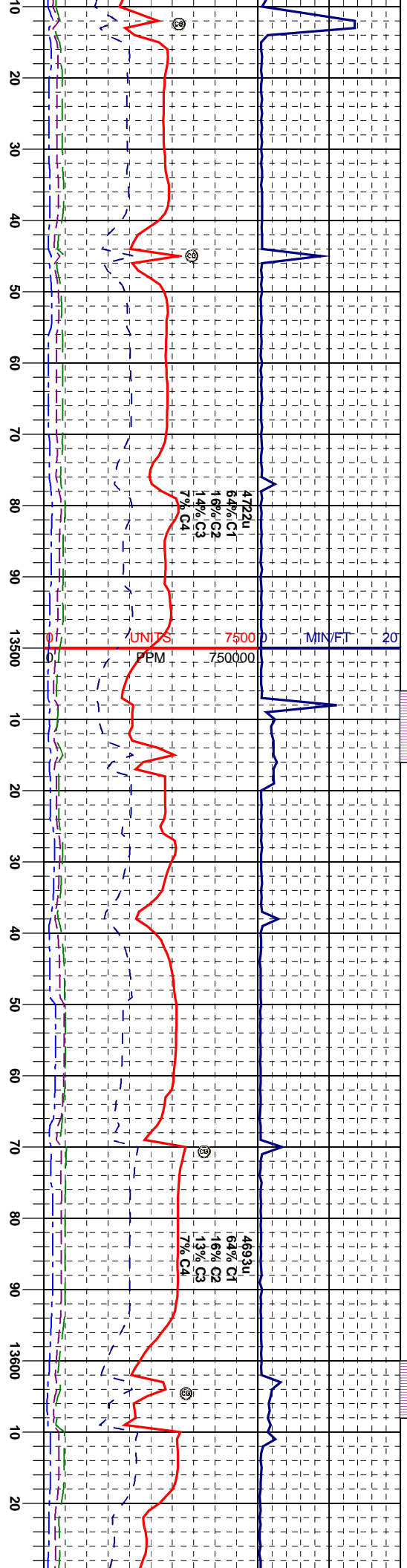
CHK: lt - mgy, occ crm, sft & brit, sb
lsr, sp mot tex, v calc, w/ scat lt yel c
MR: m-dk gy, frm, brit, sb biky, rthy-
lsr, mot & sl gsy tex, tr bent, tr sec ce
mod od, sting bt yel cut, bt yel UV sin
wh lt sin.

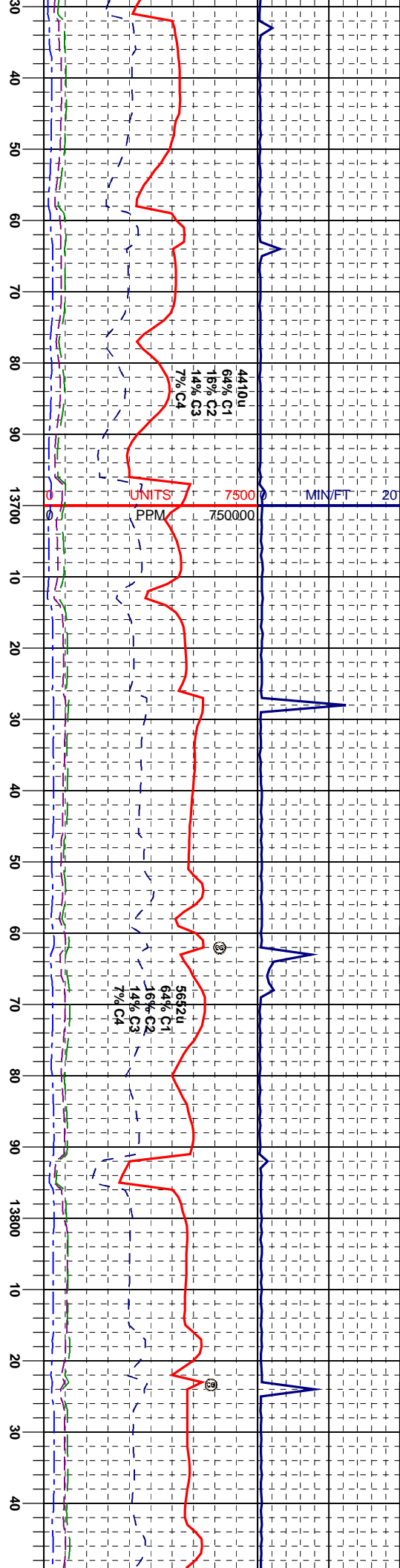


MD 13222	INC 92.66°	AZM 182.22°	TVD 6205.16'	CHK: It -mgy, occ crm, sft & bnt, sb ply, rthy -sb gsy lstr, mot and chky tex, clean chk "sweet spot" scat lly el chk flor, fast sting - blimg bt yel cut, bt yel UV str, m brn WH it stin.	MD 13285	INC 93.34°	AZM 181.87°	TVD 6201.87'	CHK: It gy-wh, sft, sb ply& bky, sb fls, rthy- -sb gsy lstr, mot and chky tex, clean chk "sweet spot" scat lly el chk flor, fast sting - blimg bt yel cut, bt yel UV str, m brn WH it stin.	MD 13348	INC 92.23°	AZM 181.77°	TVD 6198.7'	CHK: It gy-wh, sft, sb ply& bky, sb fls, rthy- -sb gsy lstr, mot and chky tex, clean chk "sweet spot" scat lly el chk flor, fast sting - blimg bt yel cut, bt yel UV str, m brn WH it stin.	MD 13385	INC 92.23°	AZM 181.77°	TVD 6198.7'	CHK: It gy-wh, sft, sb ply& bky, sb fls, rthy- -sb gsy lstr, mot and chky tex, clean chk "sweet spot" scat lly el chk flor, fast sting - blimg bt yel cut, bt yel UV str, m brn WH it stin.
----------	------------	-------------	--------------	---------------------------------------------------------------------------------------------------------------------------------------------------------------------------------------------------------	----------	------------	-------------	--------------	---------------------------------------------------------------------------------------------------------------------------------------------------------------------------------------------------------	----------	------------	-------------	-------------	---------------------------------------------------------------------------------------------------------------------------------------------------------------------------------------------------------	----------	------------	-------------	-------------	---------------------------------------------------------------------------------------------------------------------------------------------------------------------------------------------------------

180G

-150G





MUD WT 9.3/VIS 31

MUD WT 9.3/VIS 31

MUD W

MD 13664'

INC 89.81°

AZM 191.95°

TVD 6194.33'

MD 13728'

INC 89.91°

AZM 191.95°

TVD 6194.33'

MD 13792'

INC 89.57°

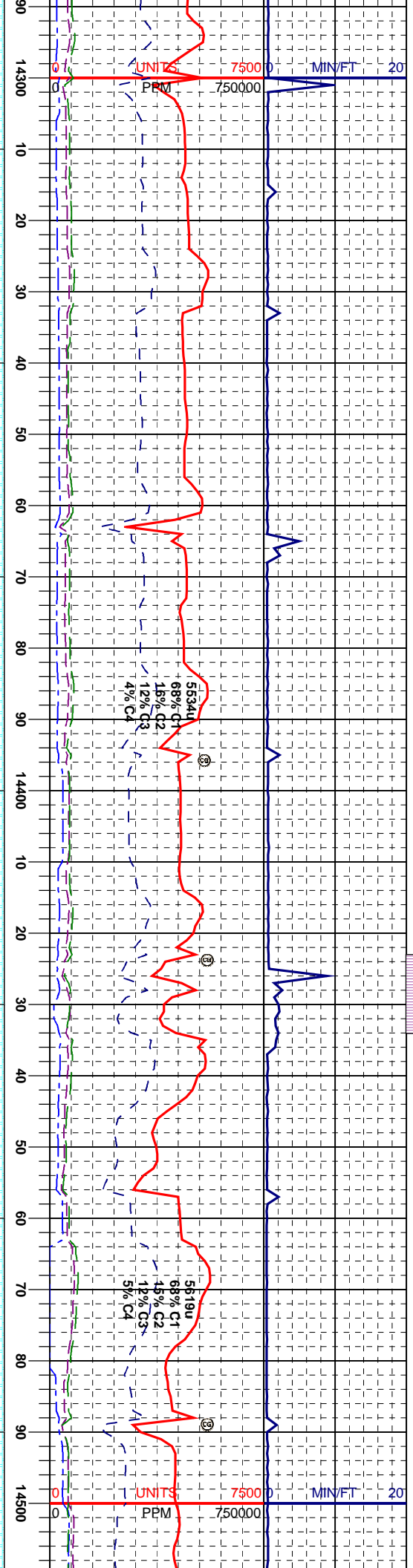
AZM 182.5°

TVD 6194.62'

CHK: llyg - crm, occ wh, sft & brit, sb pily, rthy
lstr, sp mot tex, v calc, w/ scat lt yel chk flr,
MRL: m-dk gy, frm, brit, sb bily, rthy-sb gt
lstr, mot & sl gt tex, tr bent, vsi tr sec calcite,
mod od, fast string - bling bt yel cut, bt yel UV
stin, m brn wh lt stn.

CHK: llyg - crm, occ wh, sft & brit, sb pily, rthy
lstr, sp mot tex, v calc, w/ scat lt yel chk flr,
MRL: m-dk gy, frm, brit, sb bily, rthy-sb gt
lstr, mot & sl gt tex, tr bent, vsi tr sec calcite,
mod od, fast string - bling bt yel cut, bt yel UV
stin, m brn wh lt stn.

CHK: llyg - crm, occ wh, sft & brit, sb pily, rthy
lstr, sp mot tex, v calc, w/ scat lt yel chk flr,
MRL: m-dk gy, frm, brit, sb bily, rthy-sb gt
lstr, mot & sl gt tex, tr bent, vsi tr sec calcite,
mod od, string bt yel cut, bt yel UV sin, lt-m
brn wh lt stn.

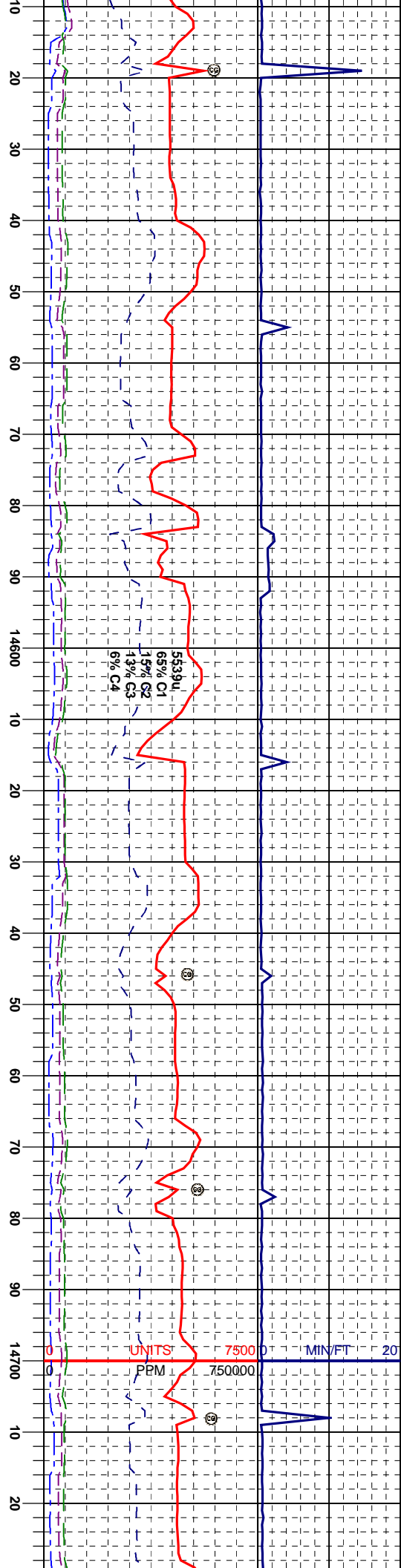


6170	0	apt 300	MD 14330° INC 90.86° AZM 181.64° TVD 6204.2'	WT 9.3/ VIS 32	MD 14392° INC 90.87° AZM 181.15° TVD 6203.8'	MD 14486° INC 90.43° AZM 182.14° TVD 6202.3'	WT 9.3/ VIS 32
------	---	---------	-------------------------------------------------------	----------------	-------------------------------------------------------	-------------------------------------------------------	----------------

CHK: lt-mgy, off wh, w/ dk gy dreaks, sft, sb
ply & sb fis, rthy-sb gsy lstr, silty and lam tex,
tr fos, scat lt yel chk flor, fast stmg bt yel cut,
bt yel UV stn, m brn WH lt stn, scat bent, w/
pyr, MRL: dk gy, sft, gsy, mot, v calc w/ org.

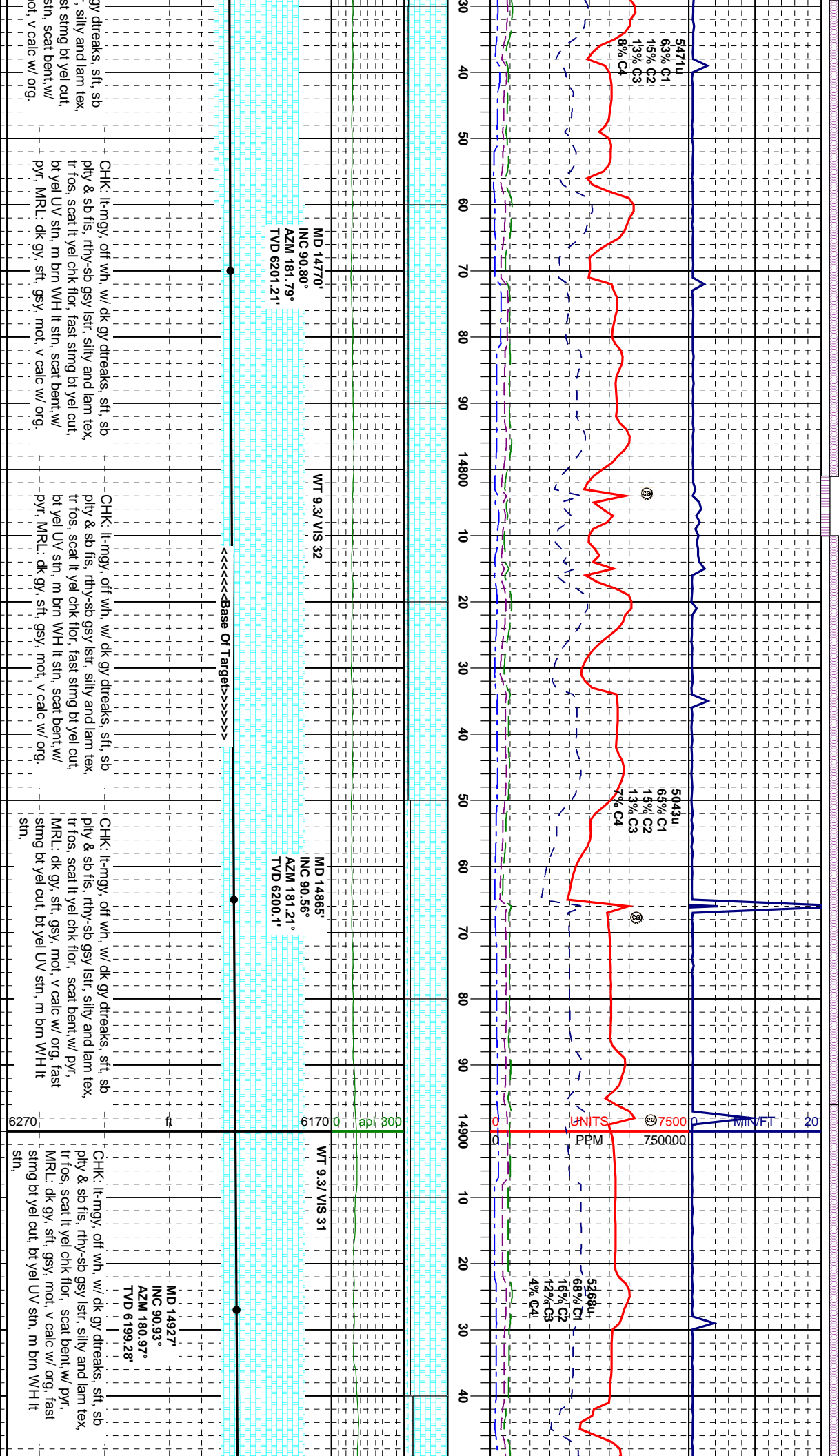
CHK: lt-mgy, off wh, w/ dk gy dreaks, sft, sb
ply & sb fis, rthy-sb gsy lstr, silty and lam tex,
tr fos, scat lt yel chk flor, fast stmg bt yel cut,
bt yel UV stn, m brn WH lt stn, scat bent, w/
pyr, MRL: dk gy, sft, gsy, mot, v calc w/ org.

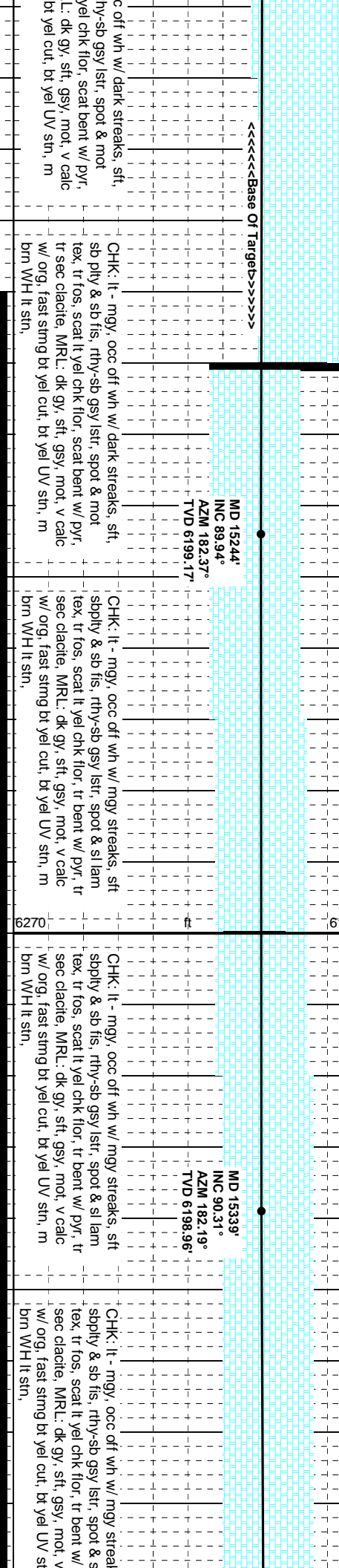
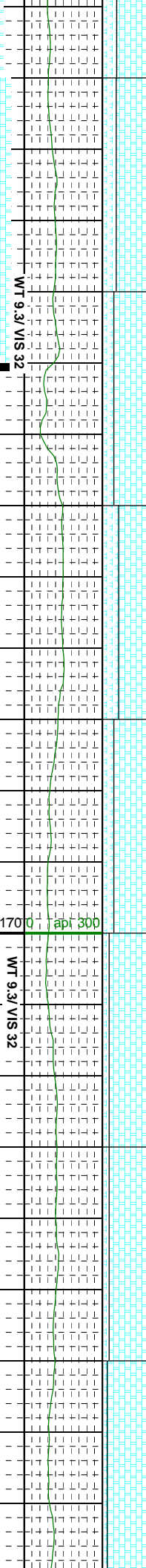
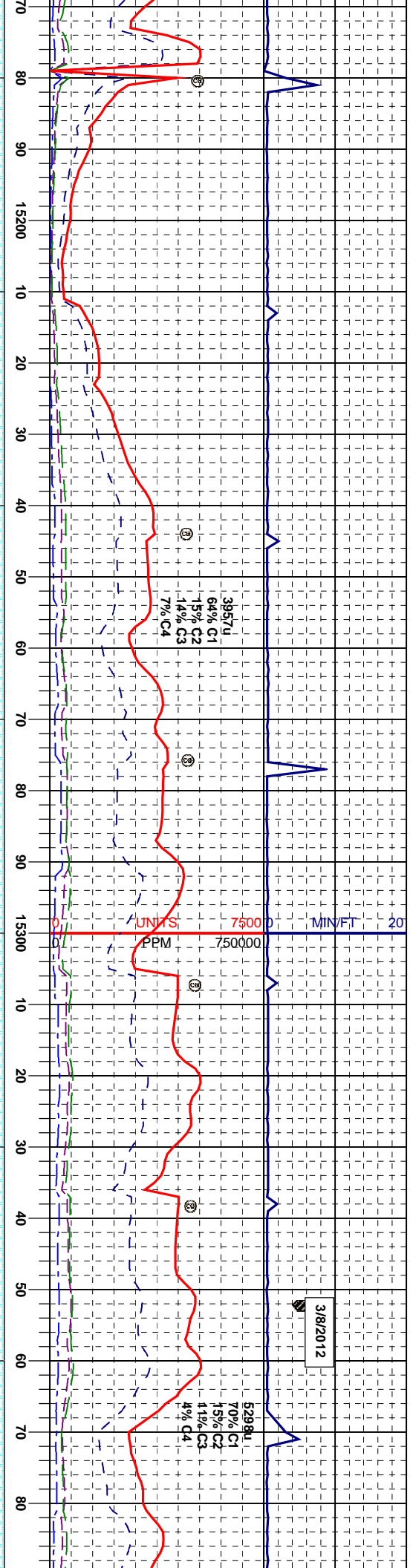
CHK: lt-mgy, off wh, w/ dk gy dreaks, sft, sb
ply & sb fis, rthy-sb gsy lstr, silty and lam tex,
tr fos, scat lt yel chk flor, fast stmg bt yel cut,
bt yel UV stn, m brn WH lt stn, scat bent, w/
pyr, MRL: dk gy, sft, gsy, mot, v calc w/ org.

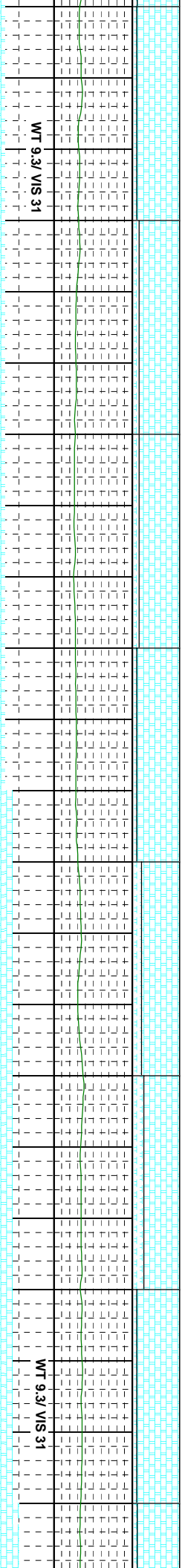


S 32		MD 14549°	MD 14612°	MD 14675°
INC 90.56°		INC 89.63°	INC 90.0°	INC 90.0°
AZM 181.77°		AZM 181.44°	WT 9.3/ VIS 32	AZM 181.64°
TVD 6201.71'		TVD 6201.6'		TVD 6201.8'

It-mgy, off wh, w/ dk gy dreaks, sft, sb sb fis, rthy-sb gsy istr, silly and lam tex, tr fos, scat lt yel chk flor, fast sting bt yel cut, UV sin, m brn WH lt sin, scat bent, w/ pyr, MRL: dk gy, sft, gsy, mot, v calc w/ org.	CHK: It-mgy, off wh, w/ dk gy dreaks, sft, sb ply & sb fis, rthy-sb gsy istr, silly and lam tex, tr fos, scat lt yel chk flor, fast sting bt yel cut, bt yel UV sin, m brn WH lt sin, scat bent, w/ pyr, MRL: dk gy, sft, gsy, mot, v calc w/ org.	CHK: It-mgy, off wh, w/ dk gy dreaks, sft, sb ply & sb fis, rthy-sb gsy istr, silly and lam tex, tr fos, scat lt yel chk flor, fast sting bt yel cut, bt yel UV sin, m brn WH lt sin, scat bent, w/ pyr, MRL: dk gy, sft, gsy, mot, v calc w/ org.	CHK: It-mgy, off wh, w/ dk gy dreaks, sft, sb ply & sb fis, rthy-sb gsy istr, silly and lam tex, tr fos, scat lt yel chk flor, fast sting bt yel cut, bt yel UV sin, m brn WH lt sin, scat bent, w/ pyr, MRL: dk gy, sft, gsy, mot, v calc w/ org.
----------------------------------------------------------------------------------------------------------------------------------------------------------------------------------------------------------------------------------------------	----------------------------------------------------------------------------------------------------------------------------------------------------------------------------------------------------------------------------------------------------------------	----------------------------------------------------------------------------------------------------------------------------------------------------------------------------------------------------------------------------------------------------------------	----------------------------------------------------------------------------------------------------------------------------------------------------------------------------------------------------------------------------------------------------------------







WI 9.3/ VIS 31

AZM 182.39°
TVD 6198.08'

MD 15529°
INC 91.79°
AZM 182.09°
TVD 6196.09

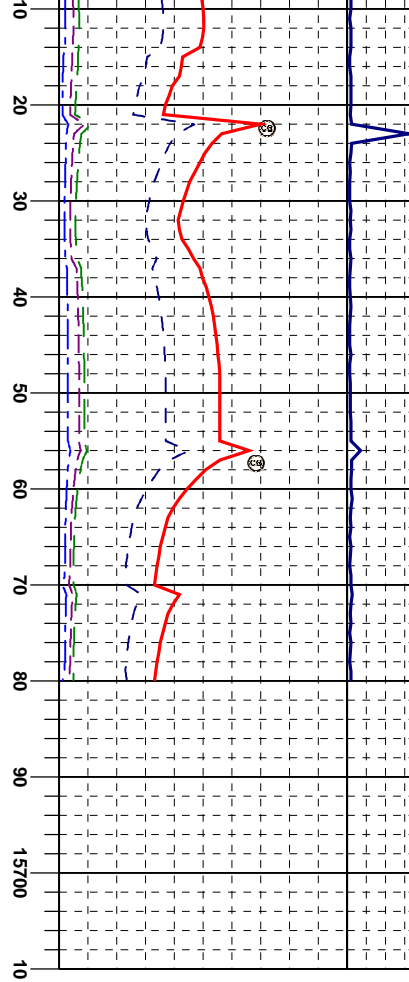
CHK: It mgy, occ off wh w/ mgy streaks, sft
sibly & sb 'is, rthy-chk gsy 'str, spot & sl lam
tex, tr fos, scat it yel-chk 'lor, tr bent w/ pyr, tr
sec clacite, MR.L: dk gy, sft, gsy, mot, v calc
w/ org, fast stmg bt yel cut, bt yel UV stn, m
bm W/H lt sin,

CHK: illy - oft white, w occ mgy streaks, sit
 supply & sb fil, rthy-sb gsy lst, spot & sl lam
 tex, tr fos, scat it yel chk flwr, tr bent w pyr, t
 sec clacite, MR.L: dk gy, sft, gsy, mot, v calc
 w/ org, fast sming bt yel cut, bt yel UV stn, m
 brn WH lt sin,

Cf. *it mdy*, *occ off wn w/ dark streaks*, *sh
sb ply & sb fis*, *rthysb gsy /lsr*, *spot & mot
-tex*, *tr fos*, *scat it yel chk flwr*, *scat bent w/ py
tr sec clacite*, *MRL: dk gy*, *sft*, *gsy*, *mot*, *v cal
-w org*, *fast smng bt yel cut*, *bt yel UV stn*, *m
brn WH lt stn*.

sb plty
tex, tr f
tr sec
w/ org,
brn W

TD @ 06:05 HRS MST 3/8/2012
Thank You for Using Columbine Logging



MD 15649'

INC 90.68°

AZM 179.63°

TVD 6194.4'

SLP to Bit

MD 15680'

INC 90.68°

AZM 179.63°

TVD 6192.7'

- mgy, occ off wh w/ dark streaks, sft,
& sb fis, rthy-sb gsy lstr, spot & mot
os, scat lt yel chk flor, scat bent w/ pyr,
lactite, MRL: dk gy, sft, gsy, mot, v calc
fast stimg bt yel cut, bt yel UV sin, m
- lt sin,

CHK: lt - mgy, occ off wh w/ dark streaks, sft,
sb ply & sb fis, rthy-sb gsy lstr, spot & mot
tex, tr fos, scat lt yel chk flor, scat bent w/ pyr,
tr sec clactite, MRL: dk gy, sft, gsy, mot, v calc
w/ org, fast stimg bt yel cut, bt yel UV sin, m
brn WH lt sin,