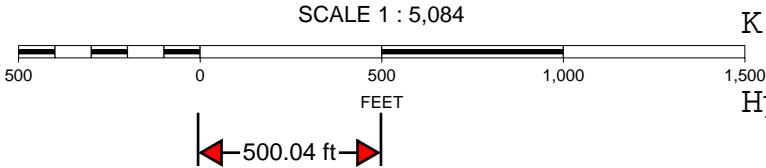
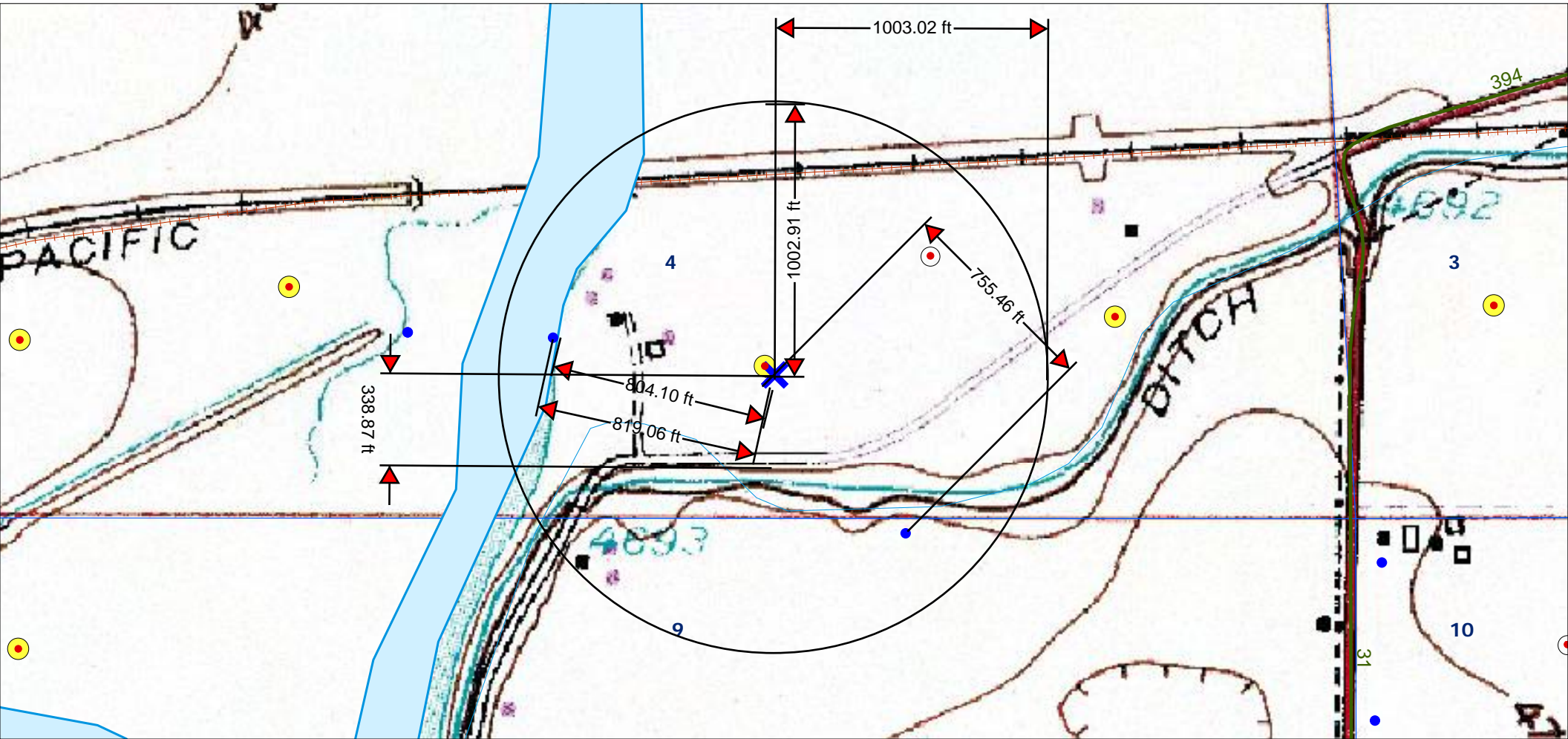


Surface waters and water wells in 1000': Union Ditch bearing S at 339 ft.; irrigaton well bearing SE at 755 ft.; South Platte River bearing W at 804 ft.; domestic well bearing W at 819 ft.



K. P. Kauffman Company, Inc.

Hydrology map; indicating surface waters and water wells

Rumsey Land #15-4-37

SESW section 4-T4N-R66W

Weld Co., Colorado