
OXY GRAND JUNCTION EBUSINESS

**CC 697-08-02A
GRAND VALLEY
Garfield County , Colorado**

**Cement Surface Casing
19-Apr-2012**

Post Job Summary

The Road to Excellence Starts with Safety

Sold To #: 344034	Ship To #: 2921942	Quote #:	Sales Order #: 9416014
Customer: OXY GRAND JUNCTION EBUSINESS	Customer Rep: Rosser, Terry		
Well Name: CC	Well #: 697-08-02A	API/UWI #: 05-045-20953	
Field: GRAND VALLEY	City (SAP):	County/Parish: Garfield	State: Colorado
Lat: N 39.544 deg. OR N 39 deg. 32 min. 37.248 secs.	Long: W 108.246 deg. OR W -109 deg. 45 min. 12.78 secs.		
Contractor: H&P 353	Rig/Platform Name/Num: H&P 353		
Job Purpose: Cement Surface Casing			
Well Type: Development Well	Job Type: Cement Surface Casing		
Sales Person: HIMES, JEFFREY	Srv Supervisor: MAGERS, MICHAEL	MBU ID Emp #: 339439	

Job Personnel

HES Emp Name	Exp Hrs	Emp #	HES Emp Name	Exp Hrs	Emp #	HES Emp Name	Exp Hrs	Emp #
DEUSSEN, EDWARD Eric	10	485182	EICKHOFF, ROBERT Edward	10	495311	MAGERS, MICHAEL Gerard	10	339439
SPARKS, CLIFFORD Paul	2	502476						

Equipment

HES Unit #	Distance-1 way	HES Unit #	Distance-1 way	HES Unit #	Distance-1 way	HES Unit #	Distance-1 way
10722398	120 mile	10744648C	120 mile	10938678	120 mile	10988964	120 mile
11139330	120 mile	11259886	120 mile	11808845	120 mile	4901	120 mile
6543	120 mile						

Job Hours

Date	On Location Hours	Operating Hours	Date	On Location Hours	Operating Hours	Date	On Location Hours	Operating Hours
04/18/2012	7	4	4/19/2012	3	1			

TOTAL Total is the sum of each column separately

Job

Formation Name	Top	Bottom	Called Out	Date	Time	Time Zone
Formation Depth (MD)			On Location	18 - Apr - 2012	14:00	MST
Form Type		BHST	Job Started	18 - Apr - 2012	19:36	MST
Job depth MD	2725. ft	Job Depth TVD	Job Completed	19 - Apr - 2012	02:22	MST
Water Depth		Wk Ht Above Floor	Departed Loc	19 - Apr - 2012	04:00	MST
Perforation Depth (MD)	From	To				

Well Data

Description	New / Used	Max pressure psig	Size in	ID in	Weight lbm/ft	Thread	Grade	Top MD ft	Bottom MD ft	Top TVD ft	Bottom TVD ft
-------------	------------	-------------------	---------	-------	---------------	--------	-------	-----------	--------------	------------	---------------

Sales/Rental/3rd Party (HES)

Description	Qty	Qty uom	Depth	Supplier
PLUG,CMTG,TOP,9 5/8,HWE,8.16 MIN/9.06 MA	1	EA		
R/A DENSOMETER W/CHART RECORDER,/JOB,ZI	1	JOB		
PORT. DATA ACQUIS. W/OPTICEM RT W/HES	1	EA		
ADC (AUTO DENSITY CTRL) SYS, /JOB,ZI	1	JOB		

Tools and Accessories

Type	Size	Qty	Make	Depth	Type	Size	Qty	Make	Depth	Type	Size	Qty	Make
Guide Shoe					Packer					Top Plug	9.625	1	HES
Float Shoe					Bridge Plug					Bottom Plug			
Float Collar					Retainer					SSR plug set			
Insert Float										Plug Container	9.625	1	HES
Stage Tool										Centralizers			

Miscellaneous Materials

Gelling Agt	Conc	Surfactant	Conc	Acid Type	Qty	Conc	%
Treatment Fld	Conc	Inhibitor	Conc	Sand Type	Size	Qty	

Fluid Data

Stage/Plug #: 1									
Fluid #	Stage Type	Fluid Name	Qty	Qty uom	Mixing Density lbm/gal	Yield ft ³ /sk	Mix Fluid Gal/sk	Rate bbl/min	Total Mix Fluid Gal/sk
1	Fresh Water Spacer		10.00	bbl	8.33	.0	.0	.0	
2	Gel Water Spacer		20.00	bbl	8.34	.0	.0	.0	
0.25 gal/bbl		LGC-36 UC, BULK (101582749)							
3	Fresh Water Spacer		10.00	bbl	8.33	.0	.0	.0	
4	HalCem Lead Cement	HALCEM (TM) SYSTEM (452986)	1160.0	sacks	12.3	2.15	11.83		11.83
11.83 Gal		FRESH WATER							
5	VersaCem Tail Cement	VARICEM (TM) CEMENT (452009)	149.0	sacks	12.8	2.07	10.67		10.67
10.67 Gal		FRESH WATER							
6	Fresh Water Displacement		207.00	bbl	8.34	.0	.0	.0	
Calculated Values		Pressures		Volumes					
Displacement	207	Shut In: Instant		Lost Returns	673	Cement Slurry	531	Pad	
Top Of Cement	SURFACE	5 Min		Cement Returns	5	Actual Displacement	210	Treatment	
Frac Gradient		15 Min		Spacers	40	Load and Breakdown		Total Job	767
Rates									
Circulating	RIG	Mixing	5	Displacement	6/2	Avg. Job	5		
Cement Left In Pipe	Amount	47 ft	Reason	Shoe Joint					
Frac Ring # 1 @	ID	Frac ring # 2 @	ID	Frac Ring # 3 @	ID	Frac Ring # 4 @	ID		
The Information Stated Herein Is Correct				Customer Representative Signature					

The Road to Excellence Starts with Safety

Sold To #: 344034	Ship To #: 2921942	Quote #:	Sales Order #: 9416014
Customer: OXY GRAND JUNCTION EBUSINESS		Customer Rep: Rosser, Terry	
Well Name: CC	Well #: 697-08-02A	API/UWI #: 05-045-20953	
Field: GRAND VALLEY	City (SAP):	County/Parish: Garfield	State: Colorado
Legal Description:			
Lat: N 39.544 deg. OR N 39 deg. 32 min. 37.248 secs.		Long: W 108.246 deg. OR W -109 deg. 45 min. 12.78 secs.	
Contractor: H&P 353		Rig/Platform Name/Num: H&P 353	
Job Purpose: Cement Surface Casing			Ticket Amount:
Well Type: Development Well		Job Type: Cement Surface Casing	
Sales Person: HIMES, JEFFREY		Srv Supervisor: MAGERS, MICHAEL	MBU ID Emp #: 339439

Activity Description	Date/Time	Cht #	Rate bbl/min	Volume bbl		Pressure psig		Comments
				Stage	Total	Tubing	Casing	
Call Out	04/18/2012 09:00							ALL HES PERSONNEL
Pre-Convoy Safety Meeting	04/18/2012 11:20							ALL HES PRESONNEL
Crew Leave Yard	04/18/2012 11:30							ALL HES PERSONNEL
Arrive At Loc	04/18/2012 14:00							HES ARRIVED ON LOCATION AT 14:00 3 HOURS EARLY TIME STARTS AT 17:00 RIG STILL RUNNING CASING/ RIG CIRCULATED WHILE HES RAN IRON UNDERNEATH RIG FLOOR
Assessment Of Location Safety Meeting	04/18/2012 14:10							LOCATION IN GOOD CONDITION/WINDY/MU DDY IN SPOTS
Pre-Rig Up Safety Meeting	04/18/2012 16:45							JSA ON RIGGING UP
Rig-Up Equipment	04/18/2012 17:00							1 PICKUP 1 ELITE 2 SILO 1 BULK TRUCK
Safety Huddle	04/18/2012 19:00							RIG CREW AND HES CREW ALL PRESENT
Start Job	04/18/2012 19:36							TD-2725 TP-2675 SJ-47 CSG 9 5/8 36# J-55 OH-14 3/4" MW-9.5
Other	04/18/2012 19:37		2	2			50.0	FILL LINES
Pressure Test	04/18/2012 19:42		0.5	0.5			3420.0	PSI TEST OK
Pump Spacer 1	04/18/2012 19:47		4	10			97.0	FRESH WATER
Pump Spacer 2	04/18/2012 19:51		4	20			84.0	LGC GEL SPACER/ 2.5 GAL PER 10 BBLS

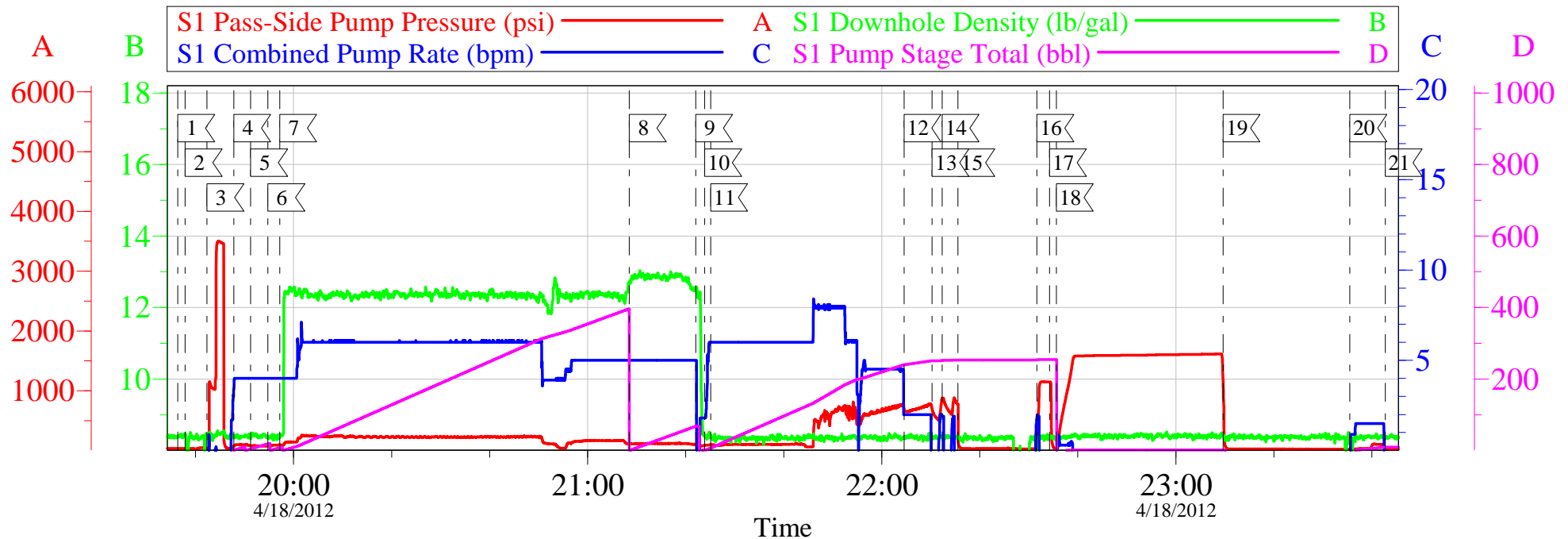
Activity Description	Date/Time	Cht #	Rate bbl/ min	Volume bbl		Pressure psig		Comments
				Stage	Total	Tubing	Casing	
Pump Spacer 1	04/18/2012 19:54		4	10			100.0	FRESH WATER
Pump Lead Cement	04/18/2012 19:57		6	444.2			243.0	HALCEM 1160 SKS 12.3 PPG 2.15 FT3/SK 11.83 GAL/SK 7 BOXES TUFF FIBER
Pump Tail Cement	04/18/2012 21:08		6	54.9			129.0	VARICEM 149 SKS 12.8 PPG 2.07 FT3/SK 10.67 GAL/SK
Shutdown	04/18/2012 21:22							
Drop Top Plug	04/18/2012 21:23							PLUG AWAY NO PROBLEMS
Pump Displacement	04/18/2012 21:25		6	197			727.0	PUMP FRESH WATER DISPLACEMENT
Slow Rate	04/18/2012 22:04		2	10			690.0	GOT RETURNS AT 135 BBLs INTO DISPLACEMENT TOTAL LOST RETURNS 673 BBLs
Shutdown	04/18/2012 22:10			207				SHUT DOWN ON CALCULATED DISPLACEMENT
Pump Displacement	04/18/2012 22:12		2	2			860.0	PER COMPANY REP PUMP 2 BBLs MORE OF DISPLACEMENT
Shutdown	04/18/2012 22:15							CHECK PLUG CONTAINER TO CHECK STATUS OF PLUG/PLUG AWAY
Bump Plug	04/18/2012 22:31		1	1.5			890.0	BUMPED PLUG
Check Floats	04/18/2012 22:34			210			1200. 0	FLOATS HELD
Pressure Test	04/18/2012 22:35		1	1.5			1510. 0	PRESSURE TEST 9 5/8" CASING TO 1510 PSI
Release Casing Pressure	04/18/2012 23:09						1614. 0	RELEASE PRESSURE AT 1614 PSI
Other	04/18/2012 23:35		1.5	10			112.0	PUMP 10 BBLs OF SUGAR WATER
End Job	04/18/2012 23:42							HAD 75 TOTAL BBLs OF RETURNS/DID NOT GET CEMENT TO SURFACE
Start Job	04/19/2012 01:36							

Cementing Job Log

Activity Description	Date/Time	Cht #	Rate bbl/ min	Volume bbl		Pressure psig		Comments
				Stage	Total	Tubing	Casing	
Pump Spacer 1	04/19/2012 01:36		1	2			24.0	FRESH WATER
Pump Cement	04/19/2012 01:38		2.5	14			110.0	TOPOUT 12.5 PPG 1.97 FT3/SK 10.96 GAL/SK
Shutdown	04/19/2012 01:46							GOT CEMENT TO SURFACE 1 BBL
Pump Cement	04/19/2012 01:58		2	11			75.0	TOPOUT
Shutdown	04/19/2012 02:07							GOT CEMENT TO SURFACE 1 BBL
Pump Cement	04/19/2012 02:12		2	13			75.0	TOPOUT
Shutdown	04/19/2012 02:19							GOT CEMENT TO SURFACE 3 BBL
Clean Lines	04/19/2012 02:20		1	2				CLEAN LINES
End Job	04/19/2012 02:22							THANKS FOR USING HES AND THE CREW OF MIKE MAGERS

OXY CC 697-08-02A

9.625 OFFLINE SURFACE



Local Event Log

1 START JOB	19:36:23	2 FILL LINES	19:37:53
3 PRESSURE TEST	19:42:20	4 PUMP H2O SPACER	19:47:48
5 PUMP GEL SPACER	19:51:15	6 PUMP H2O SPACER	19:54:45
7 PUMP LEAD CEMENT	19:57:11	8 PUMP TAIL CEMENT	21:08:30
9 SHUT DOWN	21:22:03	10 DROP PLUG	21:23:53
11 PUMP FRSH WTR DISPLACEMENT	21:25:05	12 SLOW RATE	22:04:33
13 SHUT DOWN	22:10:15	14 PUMP DISPLACEMENT	22:12:18
15 SHUT DOWN	22:15:32	16 BUMP PLUG	22:31:40
17 CHECK FLOATS	22:34:14	18 PRESSURE TEST CASING	22:35:37
19 RELEASE PRESSURE	23:09:37	20 PUMP THROUGH PARASITE	23:35:30
21 END JOB	23:42:43		

Customer: OXY H&P 353
Well Description: CC 697-08-02A
Company Rep: ALEX

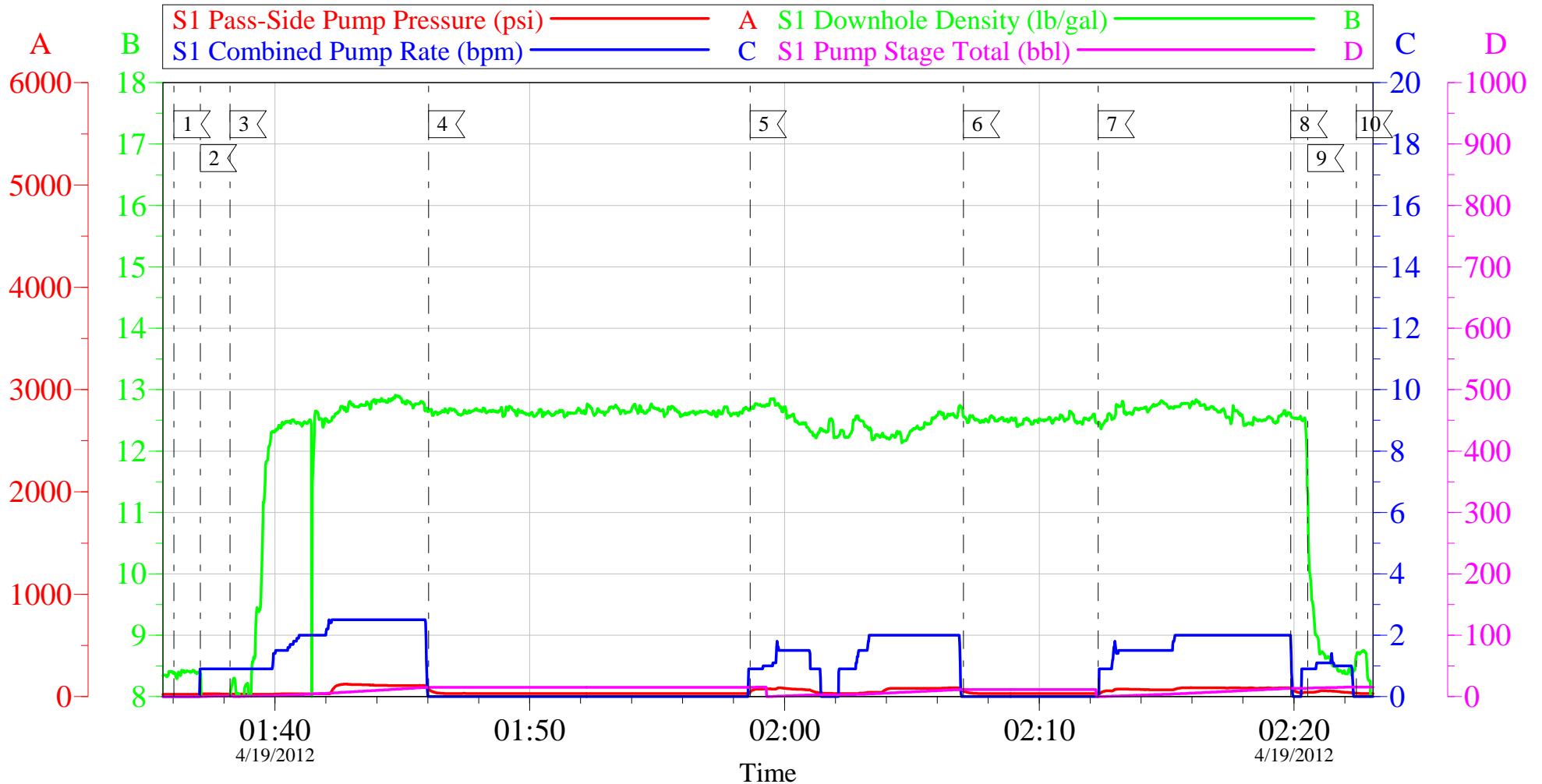
Job Date: 18-Apr-2012
Job Type: SURFACE
Cement Supervisor: MIKE MAGERS

Sales Order #: 9416014
ADC Used: YES
Elite # 6 ROB EICKHOFF

OptiCem v6.4.10
19-Apr-12 00:27

OXY CC 697-08-02A TOPOUT 1

TOPOUT



Local Event Log

1 START JOB	01:36:02	2 PUMP H2O SPACER	01:37:04	3 PUMP TOPOUT CEMENT	01:38:14
4 SHUT DOWN	01:46:02	5 PUMP TOPOUT CEMENT	01:58:39	6 SHUT DOWN	02:07:01
7 PUMP TOPOUT CEMENT	02:12:19	8 SHUT DOWN	02:19:53	9 CLEAN LINES	02:20:32
10 END JOB	02:22:27				

Customer: OXY H&P 353
Well Description: CC 697-08-02A
Company Rep: ALEX

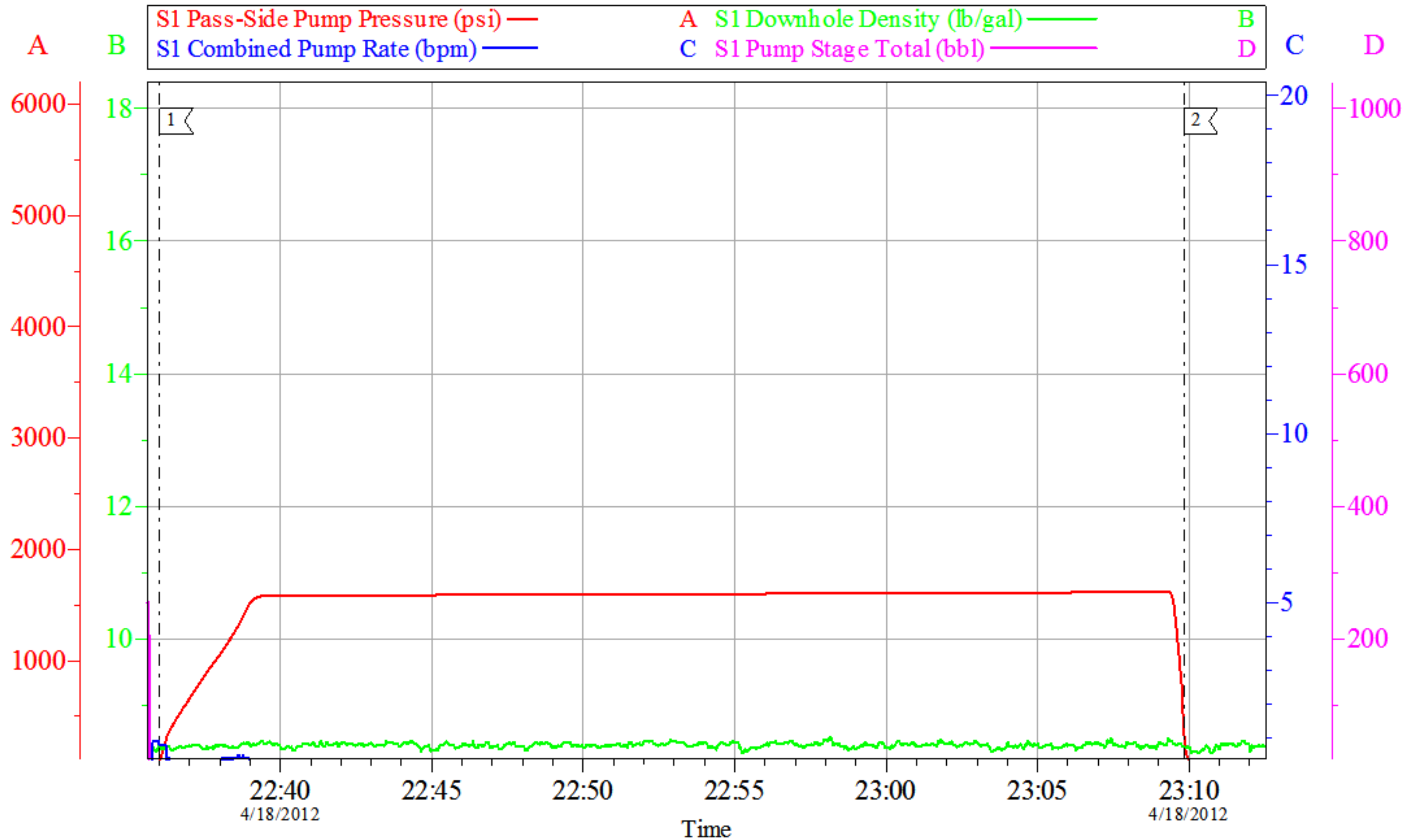
Job Date: 19-Apr-2012
Job Type: TOPOUT
Cement Supervisor: MIKE MAGERS

Sales Order #: 9416014
ADC Used: YES
Elite # 6 ROB EICKHOFF

OptiCem v6.4.10
19-Apr-12 02:40

OXY CC 697-08-02A

9.625 CASING PRESSURE TEST



Local Event Log			
1	PRESSURE UP	22:36:01	2
			RELEASE PRESSURE 23:09:51

Customer: OXY H&P 353	Job Date: 18-Apr-2012	Sales Order #: 9416014
Well Description: CC 697-08-02A	Job Type: PRESSURE TEST	ADC Used: NO
Company Rep: ALEX	Cement Supervisor: MIKE MAGERS	Elite # 6 ROB EICKHOFF

Sales Order #: 9416014	Line Item: 10	Survey Conducted Date: 4/19/2012
Customer: OXY GRAND JUNCTION EBUSINESS		Job Type (BOM): CMT SURFACE CASING BOM
Customer Representative: ALEX		API / UWI: (leave blank if unknown) 05-045-20953
Well Name: CC		Well Number: 697-08-02A
Well Type: Development Well	Well Country: United States of America	
H2S Present:	Well State: Colorado	Well County: Garfield

Dear Customer,

We hope that you were satisfied with the service quality of this job performed by Halliburton. It is the aim of our management and service personnel to deliver equipment and service of a standard unmatched in the service sector of the energy industry.

Please take the time to let us know if our performance met with your satisfaction. Please be as critical as possible to ensure we constantly improve our service. Your comments are of great value to us and are intended for the exclusive use of Halliburton.

CUSTOMER SATISFACTION SURVEY

CATEGORY	CUSTOMER SATISFACTION RESPONSE	
Survey Conducted Date	The date the survey was conducted	4/19/2012
Survey Interviewer	The survey interviewer is the person who initiated the survey.	MICHAEL MAGERS (HX13672)
Customer Participation	Did the customer participate in this survey? (Y/N)	Yes
Customer Representative	Enter the Customer representative name	ALEX
HSE	Was our HSE performance satisfactory? Circle Y or N	
Equipment	Were you satisfied with our Equipment? Circle Y or N	
Personnel	Were you satisfied with our people? Circle Y or N	
Customer Comment	Customer's Comment	

CUSTOMER SIGNATURE

Sales Order #: 9416014	Line Item: 10	Survey Conducted Date: 4/19/2012
Customer: OXY GRAND JUNCTION EBUSINESS		Job Type (BOM): CMT SURFACE CASING BOM
Customer Representative: ALEX		API / UWI: (leave blank if unknown) 05-045-20953
Well Name: CC		Well Number: 697-08-02A
Well Type: Development Well	Well Country: United States of America	
H2S Present:	Well State: Colorado	Well County: Garfield

KEY PERFORMANCE INDICATORS

General	
Survey Conducted Date	4/19/2012
The date the survey was conducted	

Cementing KPI Survey	
Type of Job	0
Select the type of job. (Cementing or Non-Cementing)	
Select the Maximum Deviation range for this Job	Vertical
What is the highest deviation for the job you just completed? This may not be the maximum well deviation.	
Total Operating Time (hours)	7
Total Operating Hours Including Rig-up, Pumping, Rig-down. Enter in decimal format.	
HSE Incident, Accident, Injury	No
HSE Incident, Accident, Injury. This should be recordable incidents only.	
Was the job purpose achieved?	Yes
Was the job delivered correctly as per customer agreed design?	
Operating Hours (Pumping Hours)	5
Total number of hours pumping fluid on this job. Enter in decimal format.	
Customer Non-Productive Rig Time (hrs)	0
Lost time due to Halliburton in the start, execution, or completion of an ordered service or product, or delays in a follow-on service. Enter in decimal format. 0 if none.	
Type of Rig Classification Job Was Performed	Drilling Rig (Portable)
Type Of Rig (classification) Job Was Performed On	
Number Of JSAs Performed	4
Number Of Jsas Performed	
Number of Unplanned Shutdowns	0
Unplanned shutdown is when injection stops for any period of time.	
Was this a Primary Cement Job (Yes / No)	Yes

Sales Order #: 9416014	Line Item: 10	Survey Conducted Date: 4/19/2012
Customer: OXY GRAND JUNCTION EBUSINESS		Job Type (BOM): CMT SURFACE CASING BOM
Customer Representative: ALEX		API / UWI: (leave blank if unknown) 05-045-20953
Well Name: CC		Well Number: 697-08-02A
Well Type: Development Well	Well Country: United States of America	
H2S Present:	Well State: Colorado	Well County: Garfield

Primary Cement Job= Casing job, Liner job, or Tie-back job.	
Did We Run Wiper Plugs? Did We Run Top And Bottom Casing Wiper Plugs?	Top
Mixing Density of Job Stayed in Designed Density Range (0-100%) Density Range defined as +/- .20 ppg. Calculation: Total BBLs cement mixed at designed density divided by total BBLs of cement multiplied by 100	93
Was Automated Density Control Used? Was Automated Density Control (ADC) Used ?	Yes
Pump Rate (percent) of Job Stayed At Designed Pump Rate Pump Rate range defined as +/- 1bbl/min. Calculation: Total BBLs of fluid pumped at the designed rate divided by Total BBLs of fluid pumped, multiplied by 100	94
Nbr of Remedial Sqz Jobs Rqd - Competition Number Of Remedial Squeeze Jobs Required After Primary Job Performed By Competition	0
Nbr of Remedial Plug Jobs Rqd - HES Number Of Remedial Plug Jobs Needed After Primary Plug Pumped By HES	0
Nbr of Remedial Sqz Jobs Rqd - HES Number Of Remedial Squeeze Jobs Required After Primary Job Performed By HES	0