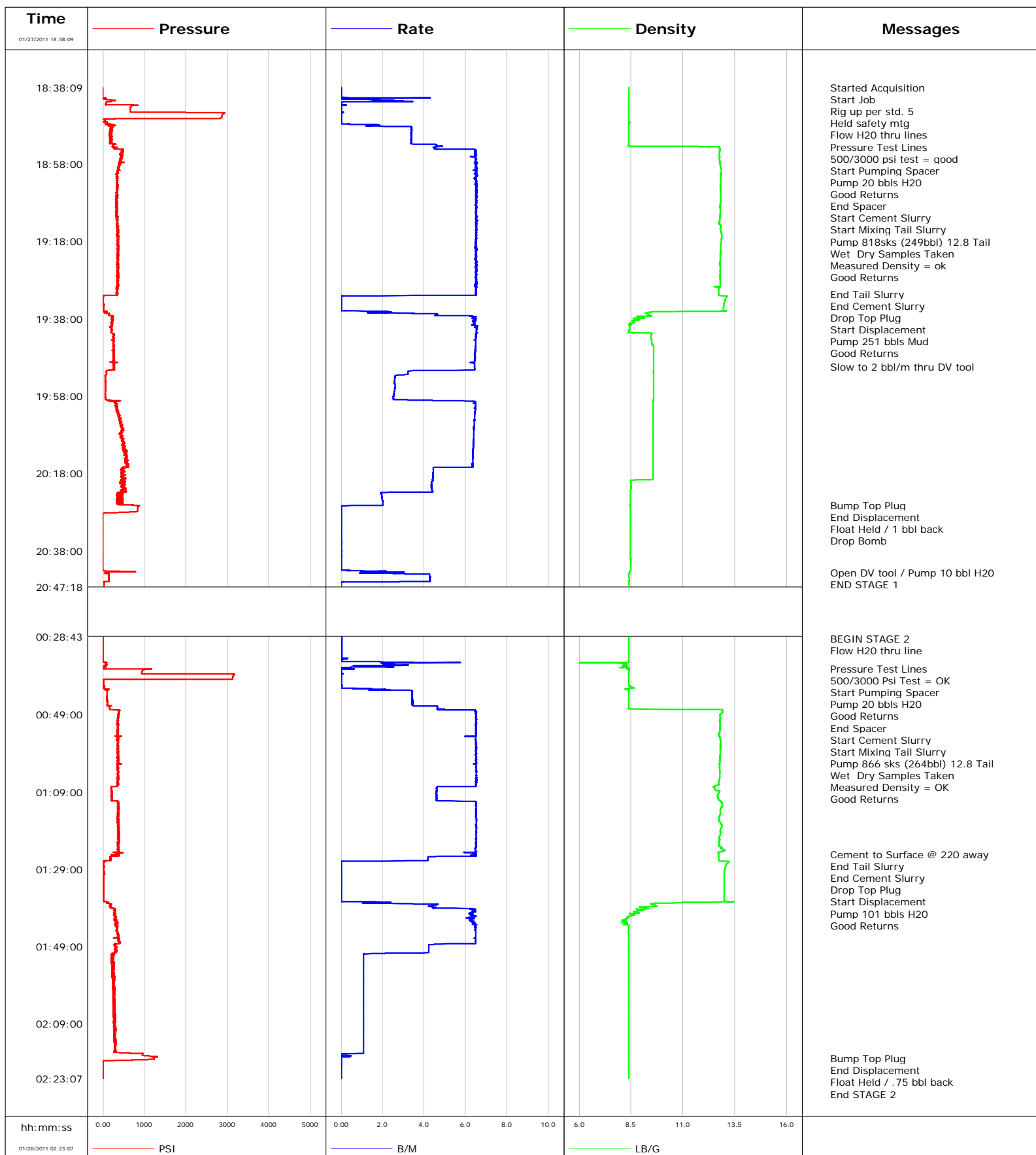


**Well** RGU 333-14-298  
**Field** Ryan Gulch  
**Engineer** B. Farnham  
**Country** United States

**Client** Williams Production  
**SIR No.** 457776  
**Job Type** 9 5/8" 2 Stage Surface  
**Job Date** 1/27/2011



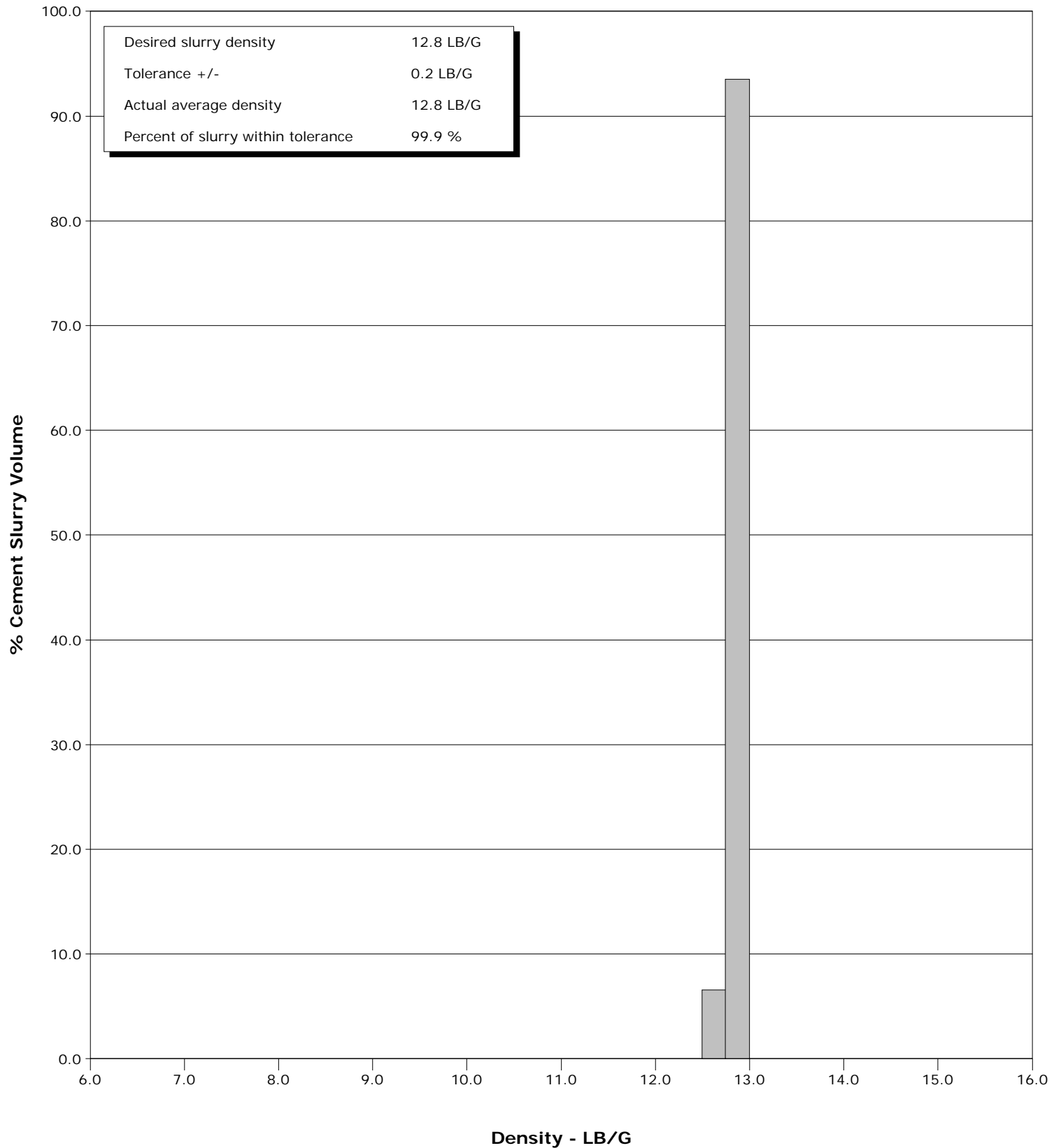


# Cementing Qa/Qc Density Report

**Well** RGU 333-14-298  
**Field** Ryan Gulch  
**Engineer** B. Farnham  
**Country** United States

**Client** Williams Production  
**SIR No.** 457776  
**Job Type** 9 5/8" 2 Stage Surface  
**Job Date** 1/27/2011

Cement Slurry - 01/27/2011 18:53:33 to 01/27/2011 19:31:38



Page 1 of 12

Well			Field	Job Start	Customer	Job Number
RGU 333-14-298			Ryan Gulch	Jan/27/2011	Williams Production	457776
Date	Time 24-hr clock	Treating Pressure PSI	Flow Rate B/M	Density LB/G	Volume BBL	Message
01/27/2011	18:43:39	661	0.0	8.39	2.2	
01/27/2011	18:44:09	658	0.0	8.39	2.2	
01/27/2011	18:44:39	1998	0.1	8.39	2.2	
01/27/2011	18:45:09	2888	0.0	8.39	2.2	
01/27/2011	18:45:39	2864	0.0	8.38	2.3	
01/27/2011	18:46:09	2828	0.0	8.39	2.3	
01/27/2011	18:46:16					Start Pumping Spacer
01/27/2011	18:46:16	2811	0.0	8.39	2.3	
01/27/2011	18:46:17					Pump 20 bbls H2O
01/27/2011	18:46:17					Good Returns
01/27/2011	18:46:17	2810	0.0	8.39	2.3	
01/27/2011	18:46:39	49	0.0	8.39	2.3	
01/27/2011	18:47:09	48	0.0	8.39	2.3	
01/27/2011	18:47:39	73	0.0	8.41	2.3	
01/27/2011	18:48:09	135	1.4	8.38	2.9	
01/27/2011	18:48:39	190	3.4	8.39	4.4	
01/27/2011	18:49:09	172	3.4	8.38	6.1	
01/27/2011	18:49:39	212	3.4	8.38	7.8	
01/27/2011	18:50:09	200	3.4	8.38	9.5	
01/27/2011	18:50:39	190	3.4	8.38	11.2	
01/27/2011	18:51:09	168	3.4	8.38	12.9	
01/27/2011	18:51:39	173	3.4	8.38	14.6	
01/27/2011	18:52:09	185	3.4	8.38	16.2	
01/27/2011	18:52:39	175	3.4	8.38	17.9	
01/27/2011	18:53:09	247	4.6	8.38	19.9	
01/27/2011	18:53:29					End Spacer
01/27/2011	18:53:29	235	4.7	11.78	21.5	
01/27/2011	18:53:33					Start Cement Slurry
01/27/2011	18:53:33	257	4.6	12.71	21.8	
01/27/2011	18:53:38					Start Mixing Tail Slurry
01/27/2011	18:53:38	291	4.5	12.75	22.2	
01/27/2011	18:53:39	291	4.5	12.75	22.3	
01/27/2011	18:54:09	482	5.3	12.79	24.5	
01/27/2011	18:54:39	456	6.5	12.76	27.7	
01/27/2011	18:54:45					Pump 818sks (249bbl) 12.8 Tail
01/27/2011	18:54:45	441	6.5	12.75	28.4	
01/27/2011	18:54:46					Wet Dry Samples Taken
01/27/2011	18:54:46					Measured Density = ok
01/27/2011	18:54:46	441	6.5	12.75	28.5	
01/27/2011	18:54:47					Good Returns
01/27/2011	18:54:47	445	6.5	12.75	28.6	
01/27/2011	18:55:09	450	6.5	12.75	30.9	
01/27/2011	18:55:39	464	6.5	12.74	34.2	
01/27/2011	18:56:09	423	6.2	12.76	37.4	
01/27/2011	18:56:39	427	6.5	12.75	40.7	
01/27/2011	18:57:09	441	6.5	12.77	43.9	
01/27/2011	18:57:39	406	6.5	12.77	47.1	
01/27/2011	18:58:09	397	6.5	12.80	50.4	
01/27/2011	18:58:39	379	6.5	12.81	53.6	
01/27/2011	18:59:09	359	6.5	12.83	56.9	
01/27/2011	18:59:39	413	6.4	12.84	60.1	
01/27/2011	19:00:09	345	6.5	12.84	63.4	
01/27/2011	19:00:39	347	6.5	12.83	66.6	
01/27/2011	19:01:09	341	6.5	12.83	69.9	

Well			Field		Job Start	Customer	Job Number
RGU 333-14-298			Ryan Gulch		Jan/27/2011	Williams Production	457776
Date	Time 24-hr clock	Treating Pressure PSI	Flow Rate B/M	Density LB/G	Volume BBL	Message	
01/27/2011	19:02:09	332	6.5	12.82	76.4		
01/27/2011	19:02:39	338	6.5	12.81	79.7		
01/27/2011	19:03:09	339	6.5	12.81	82.9		
01/27/2011	19:03:39	355	6.5	12.80	86.2		
01/27/2011	19:04:09	358	6.5	12.81	89.4		
01/27/2011	19:04:39	357	6.5	12.81	92.7		
01/27/2011	19:05:09	338	6.5	12.81	95.9		
01/27/2011	19:05:39	346	6.5	12.81	99.2		
01/27/2011	19:06:09	337	6.5	12.82	102.5		
01/27/2011	19:06:39	331	6.5	12.82	105.7		
01/27/2011	19:07:09	307	6.5	12.82	109.0		
01/27/2011	19:07:39	325	6.5	12.81	112.2		
01/27/2011	19:08:09	317	6.5	12.81	115.5		
01/27/2011	19:08:39	326	6.5	12.80	118.7		
01/27/2011	19:09:09	357	6.5	12.78	122.0		
01/27/2011	19:09:39	330	6.5	12.80	125.2		
01/27/2011	19:10:09	321	6.5	12.80	128.5		
01/27/2011	19:10:39	340	6.5	12.80	131.7		
01/27/2011	19:11:09	323	6.5	12.79	135.0		
01/27/2011	19:11:39	329	6.5	12.78	138.3		
01/27/2011	19:12:39	354	6.6	12.77	144.8		
01/27/2011	19:13:09	343	6.5	12.76	148.0		
01/27/2011	19:13:39	355	6.5	12.77	151.3		
01/27/2011	19:14:09	340	6.5	12.83	154.5		
01/27/2011	19:14:39	355	6.5	12.81	157.8		
01/27/2011	19:15:09	347	6.5	12.82	161.1		
01/27/2011	19:15:39	356	6.5	12.85	164.3		
01/27/2011	19:16:09	351	6.5	12.87	167.6		
01/27/2011	19:16:39	340	6.5	12.87	170.8		
01/27/2011	19:17:09	351	6.5	12.87	174.1		
01/27/2011	19:17:39	376	6.5	12.84	177.3		
01/27/2011	19:18:09	378	6.5	12.84	180.6		
01/27/2011	19:18:39	368	6.5	12.82	183.8		
01/27/2011	19:19:09	344	6.5	12.82	187.1		
01/27/2011	19:19:39	358	6.4	12.82	190.3		
01/27/2011	19:20:09	369	6.5	12.82	193.6		
01/27/2011	19:20:39	365	6.5	12.81	196.8		
01/27/2011	19:21:09	350	6.5	12.81	200.1		
01/27/2011	19:21:39	368	6.5	12.80	203.3		
01/27/2011	19:22:09	358	6.5	12.80	206.6		
01/27/2011	19:22:39	343	6.5	12.79	209.8		
01/27/2011	19:23:09	358	6.5	12.79	213.1		
01/27/2011	19:23:39	369	6.5	12.78	216.3		
01/27/2011	19:24:09	338	6.6	12.79	219.6		
01/27/2011	19:24:39	345	6.5	12.79	222.8		
01/27/2011	19:25:09	352	6.5	12.79	226.1		
01/27/2011	19:25:39	362	6.5	12.79	229.4		
01/27/2011	19:26:09	371	6.5	12.80	232.6		
01/27/2011	19:26:39	358	6.5	12.78	235.9		
01/27/2011	19:27:09	352	6.5	12.80	239.1		
01/27/2011	19:27:39	352	6.5	12.79	242.4		
01/27/2011	19:28:09	372	6.5	12.79	245.6		
01/27/2011	19:28:39	362	6.5	12.80	248.9		
01/27/2011	19:29:09	350	6.5	12.79	252.1		

Well			Field		Job Start	Customer	Job Number
RGU 333-14-298			Ryan Gulch		Jan/27/2011	Williams Production	457776
Date	Time 24-hr clock	Treating Pressure PSI	Flow Rate B/M	Density LB/G	Volume BBL	Message	
01/27/2011	19:30:09	347	6.5	12.72	258.6		
01/27/2011	19:30:39	335	6.5	12.73	261.9		
01/27/2011	19:31:09	349	6.5	12.73	265.1		
01/27/2011	19:31:36					End Tail Slurry	
01/27/2011	19:31:36	344	6.5	12.73	268.1		
01/27/2011	19:31:38					End Cement Slurry	
01/27/2011	19:31:38	348	6.5	12.73	268.3		
01/27/2011	19:31:39	348	6.5	12.73	268.4		
01/27/2011	19:32:05					Drop Top Plug	
01/27/2011	19:32:05	2	1.9	13.05	271.0		
01/27/2011	19:32:08					Start Displacement	
01/27/2011	19:32:08	3	0.1	13.13	271.1		
01/27/2011	19:32:09	2	0.0	13.14	271.1		
01/27/2011	19:32:39	5	0.0	13.08	271.1		
01/27/2011	19:33:09	7	0.0	13.03	271.1		
01/27/2011	19:33:39	8	0.0	13.00	271.1		
01/27/2011	19:34:09	8	0.0	12.98	271.1		
01/27/2011	19:34:39	15	0.0	12.97	271.1		
01/27/2011	19:35:09	15	0.0	12.95	271.1		
01/27/2011	19:35:39	17	0.0	12.95	271.1		
01/27/2011	19:36:09	101	2.3	10.53	271.3		
01/27/2011	19:36:39	107	3.4	9.25	272.5		
01/27/2011	19:37:09	139	4.6	9.38	274.8		
01/27/2011	19:37:39	209	6.4	9.11	277.8		
01/27/2011	19:38:09	210	6.5	8.83	281.0		
01/27/2011	19:38:39	233	6.5	8.58	284.2		
01/27/2011	19:38:40					Pump 251 bbls Mud	
01/27/2011	19:38:40	228	6.5	8.57	284.3		
01/27/2011	19:39:09	222	6.4	8.53	287.4		
01/27/2011	19:39:11					Good Returns	
01/27/2011	19:39:11	231	6.4	8.44	287.7		
01/27/2011	19:39:39	222	6.3	8.40	290.7		
01/27/2011	19:40:09	206	6.5	8.43	293.9		
01/27/2011	19:40:39	204	6.5	8.44	297.2		
01/27/2011	19:41:09	208	6.5	8.36	300.4		
01/27/2011	19:41:39	200	6.6	8.59	303.7		
01/27/2011	19:42:09	263	6.5	9.47	307.0		
01/27/2011	19:42:39	244	6.5	9.47	310.2		
01/27/2011	19:43:09	261	6.5	9.47	313.5		
01/27/2011	19:43:39	254	6.5	9.49	316.7		
01/27/2011	19:44:09	249	6.5	9.50	319.9		
01/27/2011	19:44:39	244	6.5	9.51	323.2		
01/27/2011	19:45:09	253	6.5	9.59	326.4		
01/27/2011	19:45:39	263	6.5	9.58	329.7		
01/27/2011	19:46:09	248	6.5	9.58	332.9		
01/27/2011	19:46:39	270	6.5	9.58	336.1		
01/27/2011	19:47:09	250	6.4	9.58	339.4		
01/27/2011	19:47:39	257	6.5	9.58	342.6		
01/27/2011	19:48:09	267	6.5	9.58	345.8		
01/27/2011	19:48:39	261	6.5	9.58	349.1		
01/27/2011	19:49:09	265	6.4	9.58	352.3		
01/27/2011	19:49:39	274	6.4	9.58	355.5		
01/27/2011	19:50:09	264	6.4	9.58	358.7		
01/27/2011	19:50:23					Slow to 2 bbl/m thru DV tool	

Well			Field		Job Start	Customer	Job Number
RGU 333-14-298			Ryan Gulch		Jan/27/2011	Williams Production	457776
Date	Time 24-hr clock	Treating Pressure PSI	Flow Rate B/M	Density LB/G	Volume BBL	Message	
01/27/2011	19:50:39	263	6.4	9.58	361.9		
01/27/2011	19:51:09	266	6.4	9.58	365.1		
01/27/2011	19:51:39	84	3.2	9.57	367.5		
01/27/2011	19:52:09	84	3.2	9.58	369.2		
01/27/2011	19:52:39	61	2.6	9.59	370.7		
01/27/2011	19:53:09	61	2.6	9.59	372.0		
01/27/2011	19:53:39	56	2.6	9.59	373.3		
01/27/2011	19:54:09	61	2.6	9.59	374.6		
01/27/2011	19:54:39	60	2.6	9.59	375.9		
01/27/2011	19:55:09	61	2.6	9.58	377.2		
01/27/2011	19:55:39	62	2.6	9.58	378.5		
01/27/2011	19:56:09	64	2.6	9.58	379.8		
01/27/2011	19:56:39	63	2.6	9.58	381.1		
01/27/2011	19:57:09	59	2.6	9.58	382.3		
01/27/2011	19:57:39	57	2.5	9.58	383.6		
01/27/2011	19:58:09	60	2.5	9.58	384.9		
01/27/2011	19:58:39	59	2.5	9.58	386.1		
01/27/2011	19:59:09	124	4.4	9.57	387.6		
01/27/2011	19:59:39	279	6.5	9.57	390.7		
01/27/2011	20:00:09	312	6.5	9.57	393.9		
01/27/2011	20:00:39	313	6.5	9.57	397.1		
01/27/2011	20:01:09	318	6.5	9.56	400.4		
01/27/2011	20:01:39	316	6.5	9.56	403.6		
01/27/2011	20:02:09	360	6.5	9.57	406.8		
01/27/2011	20:02:39	370	6.5	9.57	410.1		
01/27/2011	20:03:09	381	6.4	9.56	413.3		
01/27/2011	20:03:39	430	6.4	9.57	416.5		
01/27/2011	20:04:09	399	6.4	9.57	419.7		
01/27/2011	20:04:39	432	6.4	9.56	422.9		
01/27/2011	20:05:09	439	6.4	9.57	426.2		
01/27/2011	20:05:39	462	6.4	9.56	429.4		
01/27/2011	20:06:09	446	6.4	9.57	432.6		
01/27/2011	20:06:39	467	6.4	9.56	435.8		
01/27/2011	20:07:09	443	6.4	9.57	439.0		
01/27/2011	20:07:39	423	6.4	9.56	442.2		
01/27/2011	20:08:09	455	6.4	9.56	445.4		
01/27/2011	20:08:39	434	6.4	9.57	448.6		
01/27/2011	20:09:09	450	6.4	9.57	451.8		
01/27/2011	20:09:39	462	6.4	9.57	455.0		
01/27/2011	20:10:09	517	6.4	9.57	458.1		
01/27/2011	20:10:39	480	6.4	9.56	461.3		
01/27/2011	20:11:09	504	6.4	9.57	464.5		
01/27/2011	20:11:39	500	6.4	9.57	467.7		
01/27/2011	20:12:09	516	6.4	9.56	470.9		
01/27/2011	20:12:39	551	6.4	9.57	474.1		
01/27/2011	20:13:09	560	6.4	9.57	477.2		
01/27/2011	20:13:39	581	6.4	9.57	480.4		
01/27/2011	20:14:09	534	6.4	9.57	483.6		
01/27/2011	20:14:39	606	6.3	9.57	486.8		
01/27/2011	20:15:09	558	6.3	9.57	489.9		
01/27/2011	20:15:39	599	6.3	9.57	493.1		
01/27/2011	20:16:09	598	6.3	9.57	496.3		
01/27/2011	20:16:39	480	4.4	9.57	499.0		
01/27/2011	20:17:09	475	4.4	9.57	501.3		

Well			Field		Job Start		Customer		Job Number	
RGU 333-14-298			Ryan Gulch		Jan/27/2011		Williams Production		457776	
Date	Time 24-hr clock	Treating Pressure PSI	Flow Rate B/M	Density LB/G	Volume BBL	Message				
01/27/2011	20:18:09	450	4.4	9.56	505.7					
01/27/2011	20:18:39	471	4.4	9.56	507.9					
01/27/2011	20:19:09	489	4.4	9.57	510.1					
01/27/2011	20:19:39	494	4.4	9.04	512.3					
01/27/2011	20:20:09	490	4.3	8.49	514.5					
01/27/2011	20:20:39	407	4.4	8.50	516.7					
01/27/2011	20:21:09	523	4.4	8.50	518.9					
01/27/2011	20:21:39	485	4.4	8.50	521.1					
01/27/2011	20:22:09	508	4.4	8.49	523.3					
01/27/2011	20:22:39	550	4.4	8.46	525.4					
01/27/2011	20:23:09	365	1.9	8.46	527.0					
01/27/2011	20:23:39	395	2.0	8.46	528.0					
01/27/2011	20:24:09	345	2.0	8.46	528.9					
01/27/2011	20:24:39	331	2.0	8.46	529.9					
01/27/2011	20:25:09	341	2.0	8.46	530.9					
01/27/2011	20:25:39	345	2.0	8.46	531.9					
01/27/2011	20:26:09					Bump Top Plug				
01/27/2011	20:26:09	577	2.0	8.45	532.9					
01/27/2011	20:26:11					End Displacement				
01/27/2011	20:26:11	712	2.0	8.45	533.0					
01/27/2011	20:26:22					Float Held / 1 bbl back				
01/27/2011	20:26:22	869	0.1	8.45	533.3					
01/27/2011	20:26:39	842	0.0	8.45	533.3					
01/27/2011	20:27:09	842	0.0	8.45	533.3					
01/27/2011	20:27:39	844	0.0	8.46	533.3					
01/27/2011	20:28:09	334	0.0	8.46	533.3					
01/27/2011	20:28:39	-10	0.0	8.46	533.3					
01/27/2011	20:29:09	-7	0.0	8.46	533.3					
01/27/2011	20:29:39	-8	0.0	8.46	533.3					
01/27/2011	20:30:09	-7	0.0	8.46	533.3					
01/27/2011	20:30:37					Drop Bomb				
01/27/2011	20:30:37	-7	0.0	8.46	533.3					
01/27/2011	20:30:39	-8	0.0	8.46	533.4					
01/27/2011	20:31:09	-7	0.0	8.46	533.4					
01/27/2011	20:31:39	-6	0.0	8.46	533.4					
01/27/2011	20:32:09	-5	0.0	8.46	533.4					
01/27/2011	20:32:39	-5	0.0	8.46	533.4					
01/27/2011	20:33:09	-4	0.0	8.46	533.4					
01/27/2011	20:33:39	-4	0.0	8.46	533.4					
01/27/2011	20:34:09	-3	0.0	8.46	533.4					
01/27/2011	20:34:39	-4	0.0	8.46	533.4					
01/27/2011	20:35:09	-3	0.0	8.46	533.4					
01/27/2011	20:35:39	-3	0.0	8.46	533.4					
01/27/2011	20:36:09	-2	0.0	8.47	533.4					
01/27/2011	20:36:39	-2	0.0	8.47	533.4					
01/27/2011	20:37:09	-2	0.0	8.47	533.5					
01/27/2011	20:37:39	-2	0.0	8.47	533.5					
01/27/2011	20:38:09	-2	0.0	8.47	533.5					
01/27/2011	20:38:39	-3	0.0	8.47	533.5					
01/27/2011	20:39:09	-2	0.0	8.47	533.5					
01/27/2011	20:39:39	-2	0.0	8.47	533.5					
01/27/2011	20:40:09	-2	0.0	8.48	533.5					
01/27/2011	20:40:39	-2	0.0	8.48	533.5					
01/27/2011	20:41:09	-3	0.0	8.48	533.5					



Well			Field		Job Start		Customer		Job Number	
RGU 333-14-298			Ryan Gulch		Jan/27/2011		Williams Production		457776	
Date	Time 24-hr clock	Treating Pressure PSI	Flow Rate B/M	Density LB/G	Volume BBL	Message				
01/27/2011	20:42:09	-2	0.0	8.48	533.5					
01/27/2011	20:42:39	-3	0.0	8.48	533.5					
01/27/2011	20:43:09	7	0.3	8.47	533.6					
01/27/2011	20:43:39	65	2.4	8.43	534.5					
01/27/2011	20:43:41					Open DV tool / Pump 10 bbl H2O				
01/27/2011	20:43:41	38	2.2	8.42	534.6					
01/27/2011	20:44:09	150	4.3	8.40	535.8					
01/27/2011	20:44:39	143	4.3	8.39	538.0					
01/27/2011	20:45:09	138	4.3	8.42	540.1					
01/27/2011	20:45:39	143	4.3	8.41	542.3					
01/27/2011	20:46:02					END STAGE 1				
01/27/2011	20:46:02	31	2.8	8.40	543.9					
01/27/2011	20:46:09	37	0.0	8.40	543.9					
01/28/2011	00:29:24					BEGIN STAGE 2				
01/28/2011	00:29:24	3	0.0	8.39	543.9					
01/28/2011	00:29:36					Flow H2O thru line				
01/28/2011	00:29:36	3	0.0	8.39	543.9					
01/28/2011	00:29:39	3	0.0	8.39	543.9					
01/28/2011	00:30:09	2	0.0	8.39	544.0					
01/28/2011	00:30:39	3	0.0	8.39	544.0					
01/28/2011	00:31:09	3	0.0	8.39	544.0					
01/28/2011	00:31:39	3	0.0	8.39	544.0					
01/28/2011	00:32:09	3	0.0	8.39	544.0					
01/28/2011	00:32:39	2	0.0	8.39	544.0					
01/28/2011	00:33:09	2	0.0	8.39	544.0					
01/28/2011	00:33:39	3	0.0	8.39	544.0					
01/28/2011	00:34:09	0	0.0	8.39	544.0					
01/28/2011	00:34:39	4	0.3	8.39	544.1					
01/28/2011	00:35:09	7	0.0	8.39	544.1					
01/28/2011	00:35:39	76	2.8	6.64	545.1					
01/28/2011	00:36:09	102	2.6	8.19	546.2					
01/28/2011	00:36:39	67	2.2	8.12	547.3					
01/28/2011	00:37:07					Pressure Test Lines				
01/28/2011	00:37:07	15	0.0	8.38	547.5					
01/28/2011	00:37:08					500/3000 Psi Test = OK				
01/28/2011	00:37:08	15	0.0	8.30	547.5					
01/28/2011	00:37:09	15	0.0	8.31	547.5					
01/28/2011	00:37:39	953	0.0	8.42	547.6					
01/28/2011	00:38:09	938	0.0	8.39	547.6					
01/28/2011	00:38:39	3165	0.0	8.39	547.6					
01/28/2011	00:39:09	3133	0.0	8.39	547.6					
01/28/2011	00:39:39	3127	0.0	8.39	547.6					
01/28/2011	00:40:04					Start Pumping Spacer				
01/28/2011	00:40:04	13	0.0	8.39	547.6					
01/28/2011	00:40:06					Pump 20 bbls H2O				
01/28/2011	00:40:06					Good Returns				
01/28/2011	00:40:06	13	0.0	8.39	547.6					
01/28/2011	00:40:09	13	0.0	8.39	547.6					
01/28/2011	00:40:39	13	0.0	8.39	547.6					
01/28/2011	00:41:09	15	0.0	8.39	547.6					
01/28/2011	00:41:39	22	0.0	8.48	547.6					
01/28/2011	00:42:09	23	0.0	8.63	0.0					
01/28/2011	00:42:39	50	1.5	8.37	0.7					
01/28/2011	00:43:09	101	3.4	8.38	2.2					

Well			Field		Job Start		Customer	Job Number
RGU 333-14-298			Ryan Gulch		Jan/27/2011		Williams Production	457776
Date	Time 24-hr clock	Treating Pressure PSI	Flow Rate B/M	Density LB/G	Volume BBL	Message		
01/28/2011	00:44:09	98	3.4	8.39	5.7			
01/28/2011	00:44:39	102	3.4	8.38	7.4			
01/28/2011	00:45:09	107	3.4	8.38	9.1			
01/28/2011	00:45:39	101	3.4	8.38	10.8			
01/28/2011	00:46:09	109	3.4	8.38	12.5			
01/28/2011	00:46:39	105	3.4	8.38	14.2			
01/28/2011	00:47:09	154	4.6	8.38	16.4			
01/28/2011	00:47:39	158	5.0	10.47	18.8			
01/28/2011	00:47:40					End Spacer		
01/28/2011	00:47:40	158	4.8	11.64	18.8			
01/28/2011	00:47:42					Start Cement Slurry		
01/28/2011	00:47:42	163	4.7	12.26	19.0			
01/28/2011	00:47:54					Start Mixing Tail Slurry		
01/28/2011	00:47:54	397	6.5	12.91	20.1			
01/28/2011	00:48:09	397	6.5	12.92	21.7			
01/28/2011	00:48:39	385	6.5	12.88	25.0			
01/28/2011	00:49:09	375	6.5	12.79	28.2			
01/28/2011	00:49:28					Pump 866 sks (264bbl) 12.8 Tail		
01/28/2011	00:49:28	372	6.5	12.80	30.3			
01/28/2011	00:49:29					Wet Dry Samples Taken		
01/28/2011	00:49:29					Measured Density = OK		
01/28/2011	00:49:29	367	6.5	12.79	30.4			
01/28/2011	00:49:31					Good Returns		
01/28/2011	00:49:31	365	6.5	12.79	30.6			
01/28/2011	00:49:39	363	6.5	12.79	31.5			
01/28/2011	00:50:09	357	6.5	12.81	34.7			
01/28/2011	00:50:39	361	6.5	12.77	38.0			
01/28/2011	00:51:09	357	6.5	12.78	41.2			
01/28/2011	00:51:39	356	6.5	12.79	44.5			
01/28/2011	00:52:09	350	6.5	12.79	47.8			
01/28/2011	00:52:39	355	6.5	12.78	51.0			
01/28/2011	00:53:09	360	6.5	12.77	54.3			
01/28/2011	00:53:39	354	6.5	12.74	57.5			
01/28/2011	00:54:09	360	6.5	12.73	60.8			
01/28/2011	00:54:39	371	6.0	12.75	64.0			
01/28/2011	00:55:09	350	6.5	12.79	67.2			
01/28/2011	00:55:39	356	6.5	12.80	70.5			
01/28/2011	00:56:09	370	6.5	12.82	73.7			
01/28/2011	00:56:39	360	6.5	12.81	77.0			
01/28/2011	00:57:09	373	6.5	12.81	80.2			
01/28/2011	00:57:39	369	6.5	12.80	83.5			
01/28/2011	00:58:09	363	6.5	12.80	86.7			
01/28/2011	00:58:39	364	6.5	12.80	90.0			
01/28/2011	00:59:09	352	6.5	12.80	93.2			
01/28/2011	00:59:39	357	6.5	12.78	96.5			
01/28/2011	01:00:09	357	6.5	12.78	99.7			
01/28/2011	01:00:39	362	6.5	12.77	103.0			
01/28/2011	01:01:09	349	6.5	12.78	106.2			
01/28/2011	01:01:39	352	6.5	12.76	109.5			
01/28/2011	01:02:09	358	6.5	12.77	112.7			
01/28/2011	01:02:39	364	6.5	12.75	116.0			
01/28/2011	01:03:09	351	6.5	12.77	119.3			
01/28/2011	01:03:39	370	6.5	12.78	122.5			
01/28/2011	01:04:09	363	6.5	12.78	125.8			

Well			Field		Job Start	Customer	Job Number
RGU 333-14-298			Ryan Gulch		Jan/27/2011	Williams Production	457776
Date	Time 24-hr clock	Treating Pressure PSI	Flow Rate B/M	Density LB/G	Volume BBL	Message	
01/28/2011	01:05:09	369	6.5	12.78	132.3		
01/28/2011	01:05:39	378	6.5	12.77	135.5		
01/28/2011	01:06:09	358	6.5	12.73	138.8		
01/28/2011	01:06:39	360	6.5	12.74	142.1		
01/28/2011	01:07:09	352	6.5	12.72	145.3		
01/28/2011	01:07:39	191	5.0	12.48	148.5		
01/28/2011	01:08:09	206	4.6	12.53	150.8		
01/28/2011	01:08:39	212	4.6	12.62	153.2		
01/28/2011	01:09:09	210	4.6	12.74	155.5		
01/28/2011	01:09:39	217	4.6	12.69	157.8		
01/28/2011	01:10:09	215	4.6	12.66	160.1		
01/28/2011	01:10:39	212	4.6	12.69	162.4		
01/28/2011	01:11:09	212	4.6	12.75	164.7		
01/28/2011	01:11:39	367	6.5	12.86	167.4		
01/28/2011	01:12:09	365	6.5	12.89	170.7		
01/28/2011	01:12:39	381	6.5	12.91	173.9		
01/28/2011	01:13:09	364	6.5	12.83	177.2		
01/28/2011	01:13:39	367	6.5	12.80	180.4		
01/28/2011	01:14:09	380	6.5	12.80	183.7		
01/28/2011	01:14:39	350	6.5	12.79	186.9		
01/28/2011	01:15:09	348	6.5	12.77	190.2		
01/28/2011	01:15:39	360	6.5	12.73	193.4		
01/28/2011	01:16:09	343	6.5	12.73	196.7		
01/28/2011	01:16:39	354	6.5	12.74	200.0		
01/28/2011	01:17:09	357	6.5	12.82	203.2		
01/28/2011	01:17:39	387	6.5	12.86	206.5		
01/28/2011	01:18:09	358	6.5	12.86	209.7		
01/28/2011	01:18:39	374	6.5	12.81	213.0		
01/28/2011	01:19:09	387	6.5	12.81	216.3		
01/28/2011	01:19:39	374	6.5	12.81	219.5		
01/28/2011	01:20:09	372	6.5	12.80	222.8		
01/28/2011	01:20:39	395	6.5	12.75	226.0		
01/28/2011	01:21:09	385	6.5	12.76	229.3		
01/28/2011	01:21:39	374	6.5	12.77	232.5		
01/28/2011	01:22:09	356	6.5	12.75	235.8		
01/28/2011	01:22:39	365	6.5	12.75	239.0		
01/28/2011	01:23:09	366	6.5	12.74	242.3		
01/28/2011	01:23:39	374	6.5	12.82	245.5		
01/28/2011	01:24:09	371	6.5	13.00	248.8		
01/28/2011	01:24:39	241	5.9	12.70	252.0		
01/28/2011	01:25:06					Cement to Surface @ 220 away	
01/28/2011	01:25:06	291	6.5	12.72	254.8		
01/28/2011	01:25:09	389	6.5	12.72	255.1		
01/28/2011	01:25:39	215	5.4	12.72	258.4		
01/28/2011	01:26:09	181	4.2	12.73	260.5		
01/28/2011	01:26:39	193	4.2	12.73	262.6		
01/28/2011	01:26:58					End Tail Slurry	
01/28/2011	01:26:58	5	0.1	13.17	263.6		
01/28/2011	01:27:00					End Cement Slurry	
01/28/2011	01:27:00	5	0.0	13.17	263.6		
01/28/2011	01:27:09	13	0.0	13.19	263.6		
01/28/2011	01:27:17					Drop Top Plug	
01/28/2011	01:27:17	11	0.0	13.17	263.6		
01/28/2011	01:27:19					Start Displacement	

Well			Field		Job Start		Customer		Job Number	
RGU 333-14-298			Ryan Gulch		Jan/27/2011		Williams Production		457776	
Date	Time 24-hr clock	Treating Pressure PSI	Flow Rate B/M	Density LB/G	Volume BBL	Message				
01/28/2011	01:27:20					Pump 101 bbls H2O				
01/28/2011	01:27:20	11	0.0	13.16	263.6					
01/28/2011	01:27:21					Good Returns				
01/28/2011	01:27:21	11	0.0	13.16	263.6					
01/28/2011	01:27:39	11	0.0	13.11	263.6					
01/28/2011	01:28:09	12	0.0	13.06	263.6					
01/28/2011	01:28:39	16	0.0	13.03	263.6					
01/28/2011	01:29:09	18	0.0	13.01	263.6					
01/28/2011	01:29:39	35	0.0	13.00	263.6					
01/28/2011	01:30:09	36	0.0	12.99	263.6					
01/28/2011	01:30:39	21	0.0	12.98	263.6					
01/28/2011	01:31:09	21	0.0	12.98	263.6					
01/28/2011	01:31:39	23	0.0	12.98	263.6					
01/28/2011	01:32:09	23	0.0	12.99	263.6					
01/28/2011	01:32:39	22	0.0	12.99	263.6					
01/28/2011	01:33:09	21	0.0	12.99	263.6					
01/28/2011	01:33:39	22	0.0	12.98	263.6					
01/28/2011	01:34:09	21	0.0	12.98	263.6					
01/28/2011	01:34:39	21	0.0	12.98	263.6					
01/28/2011	01:35:09	21	0.0	12.99	263.6					
01/28/2011	01:35:39	20	0.0	12.99	263.6					
01/28/2011	01:36:09	21	0.0	12.99	263.6					
01/28/2011	01:36:39	20	0.0	13.00	263.6					
01/28/2011	01:37:09	20	0.0	13.00	263.6					
01/28/2011	01:37:39	117	2.3	10.86	264.1					
01/28/2011	01:38:09	192	4.6	9.49	265.6					
01/28/2011	01:38:39	178	4.2	9.76	267.8					
01/28/2011	01:39:09	271	5.9	9.31	270.0					
01/28/2011	01:39:39	251	6.4	9.09	273.2					
01/28/2011	01:40:09	278	6.4	8.77	276.4					
01/28/2011	01:40:39	279	6.3	8.60	279.6					
01/28/2011	01:41:09	317	6.5	8.41	282.7					
01/28/2011	01:41:39	302	6.1	8.33	285.9					
01/28/2011	01:42:09	264	6.3	8.10	289.0					
01/28/2011	01:42:39	295	6.3	8.20	292.2					
01/28/2011	01:43:09	355	6.4	8.28	295.4					
01/28/2011	01:43:39	306	6.5	8.39	298.6					
01/28/2011	01:44:09	344	6.5	8.39	301.8					
01/28/2011	01:44:39	353	6.5	8.39	305.1					
01/28/2011	01:45:09	348	6.5	8.38	308.3					
01/28/2011	01:45:39	352	6.5	8.38	311.5					
01/28/2011	01:46:09	381	6.5	8.38	314.8					
01/28/2011	01:46:39	355	6.5	8.38	318.0					
01/28/2011	01:47:09	373	6.5	8.38	321.3					
01/28/2011	01:47:39	393	6.5	8.38	324.5					
01/28/2011	01:48:09	413	6.5	8.38	327.8					
01/28/2011	01:48:39	291	4.2	8.38	330.3					
01/28/2011	01:49:09	314	4.2	8.38	332.4					
01/28/2011	01:49:39	322	4.2	8.38	334.6					
01/28/2011	01:50:09	295	4.2	8.38	336.7					
01/28/2011	01:50:39	308	4.2	8.38	338.8					
01/28/2011	01:51:09	207	1.1	8.39	339.7					
01/28/2011	01:51:39	255	1.1	8.39	340.2					
01/28/2011	01:52:09	210	1.1	8.38	340.8					

Well			Field		Job Start	Customer		Job Number	
RGU 333-14-298			Ryan Gulch		Jan/27/2011	Williams Production		457776	
Date	Time 24-hr clock	Treating Pressure PSI	Flow Rate B/M	Density LB/G	Volume BBL	Message			
01/28/2011	01:53:09	227	1.1	8.38	341.9				
01/28/2011	01:53:39	221	1.1	8.38	342.4				
01/28/2011	01:54:09	221	1.1	8.38	342.9				
01/28/2011	01:54:39	218	1.1	8.38	343.5				
01/28/2011	01:55:09	257	1.1	8.38	344.0				
01/28/2011	01:55:39	223	1.1	8.38	344.6				
01/28/2011	01:56:09	244	1.1	8.38	345.1				
01/28/2011	01:56:39	234	1.1	8.38	345.7				
01/28/2011	01:57:09	228	1.1	8.39	346.2				
01/28/2011	01:57:39	233	1.1	8.39	346.7				
01/28/2011	01:58:09	231	1.1	8.38	347.3				
01/28/2011	01:58:39	233	1.1	8.38	347.8				
01/28/2011	01:59:09	235	1.1	8.38	348.4				
01/28/2011	01:59:39	233	1.1	8.38	348.9				
01/28/2011	02:00:09	242	1.1	8.38	349.4				
01/28/2011	02:00:39	240	1.1	8.38	350.0				
01/28/2011	02:01:09	243	1.1	8.38	350.5				
01/28/2011	02:01:39	241	1.1	8.38	351.1				
01/28/2011	02:02:09	262	1.1	8.38	351.6				
01/28/2011	02:02:39	243	1.1	8.38	352.1				
01/28/2011	02:03:09	244	1.1	8.38	352.7				
01/28/2011	02:03:39	255	1.1	8.38	353.2				
01/28/2011	02:04:09	252	1.1	8.38	353.8				
01/28/2011	02:04:39	253	1.1	8.38	354.3				
01/28/2011	02:05:09	275	1.1	8.38	354.9				
01/28/2011	02:05:39	252	1.1	8.38	355.4				
01/28/2011	02:06:09	267	1.1	8.38	355.9				
01/28/2011	02:06:39	262	1.1	8.38	356.5				
01/28/2011	02:07:09	256	1.1	8.38	357.0				
01/28/2011	02:07:39	263	1.1	8.39	357.6				
01/28/2011	02:08:09	265	1.1	8.38	358.1				
01/28/2011	02:08:39	280	1.1	8.39	358.6				
01/28/2011	02:09:09	264	1.1	8.39	359.2				
01/28/2011	02:09:39	264	1.1	8.39	359.7				
01/28/2011	02:10:09	264	1.1	8.38	360.3				
01/28/2011	02:10:39	267	1.1	8.38	360.8				
01/28/2011	02:11:09	273	1.1	8.38	361.3				
01/28/2011	02:11:39	279	1.1	8.39	361.9				
01/28/2011	02:12:09	271	1.1	8.38	362.4				
01/28/2011	02:12:39	270	1.1	8.39	362.9				
01/28/2011	02:13:09	272	1.1	8.38	363.5				
01/28/2011	02:13:39	272	1.1	8.39	364.0				
01/28/2011	02:14:09	278	1.1	8.39	364.6				
01/28/2011	02:14:39	281	1.1	8.38	365.1				
01/28/2011	02:15:09	282	1.1	8.39	365.6				
01/28/2011	02:15:39	276	1.1	8.39	366.2				
01/28/2011	02:16:09	285	1.1	8.38	366.7				
01/28/2011	02:16:39	806	1.1	8.39	367.3				
01/28/2011	02:17:09	943	0.0	8.39	367.4				
01/28/2011	02:17:39	1252	0.0	8.39	367.5				
01/28/2011	02:17:58					Bump Top Plug			
01/28/2011	02:17:58					End Displacement			
01/28/2011	02:17:58	1233	0.0	8.39	367.5				
01/28/2011	02:18:01					Float Held / .75 bbl back			

Well RGU 333-14-298			Field Ryan Gulch		Job Start Jan/27/2011		Customer Williams Production		Job Number 457776	
Date	Time 24-hr clock	Treating Pressure PSI	Flow Rate B/M	Density LB/G	Volume BBL	Message				
01/28/2011	02:18:09	1225	0.0	8.39	367.5					
01/28/2011	02:18:39	1	0.0	8.39	367.5					
01/28/2011	02:19:09	3	0.0	8.39	367.5					
01/28/2011	02:19:39	3	0.0	8.39	367.5					
01/28/2011	02:20:09	3	0.0	8.39	367.5					
01/28/2011	02:20:39	3	0.0	8.39	367.5					
01/28/2011	02:22:32					End STAGE 2				
01/28/2011	02:22:32	2	0.0	8.39	367.5					

Post Job Summary

Average Pump Rates, bbl/min					Volume of Fluid Injected, bbl				
Slurry 5.0	N2	Mud	Maximum Rate 8.0	Total Slurry 493.0	Mud	Spacer 40.0	N2		
Treating Pressure Summary, psi					Breakdown Fluid				
Maximum 4500	Final 1250	Average 300	Bump Plug to 1250	Breakdown	Type FreshWater	Volume 700.0 bbl	Density 8.34 lb/gal		
Avg. N2 Percent		Designed Slurry Volume 513.0 bbl		Displacement 250.0 bbl		Mix Water Temp 60 degF		Cement Circulated to Surface? <input checked="" type="checkbox"/>	Volume 110.0 bbl
								Washed Thru Perfs <input type="checkbox"/>	To
Customer or Authorized Representative Brent Bascom				Schlumberger Supervisor B. Farnham			Circulation Lost <input checked="" type="checkbox"/>	Job Completed <input checked="" type="checkbox"/>	
							-	-	