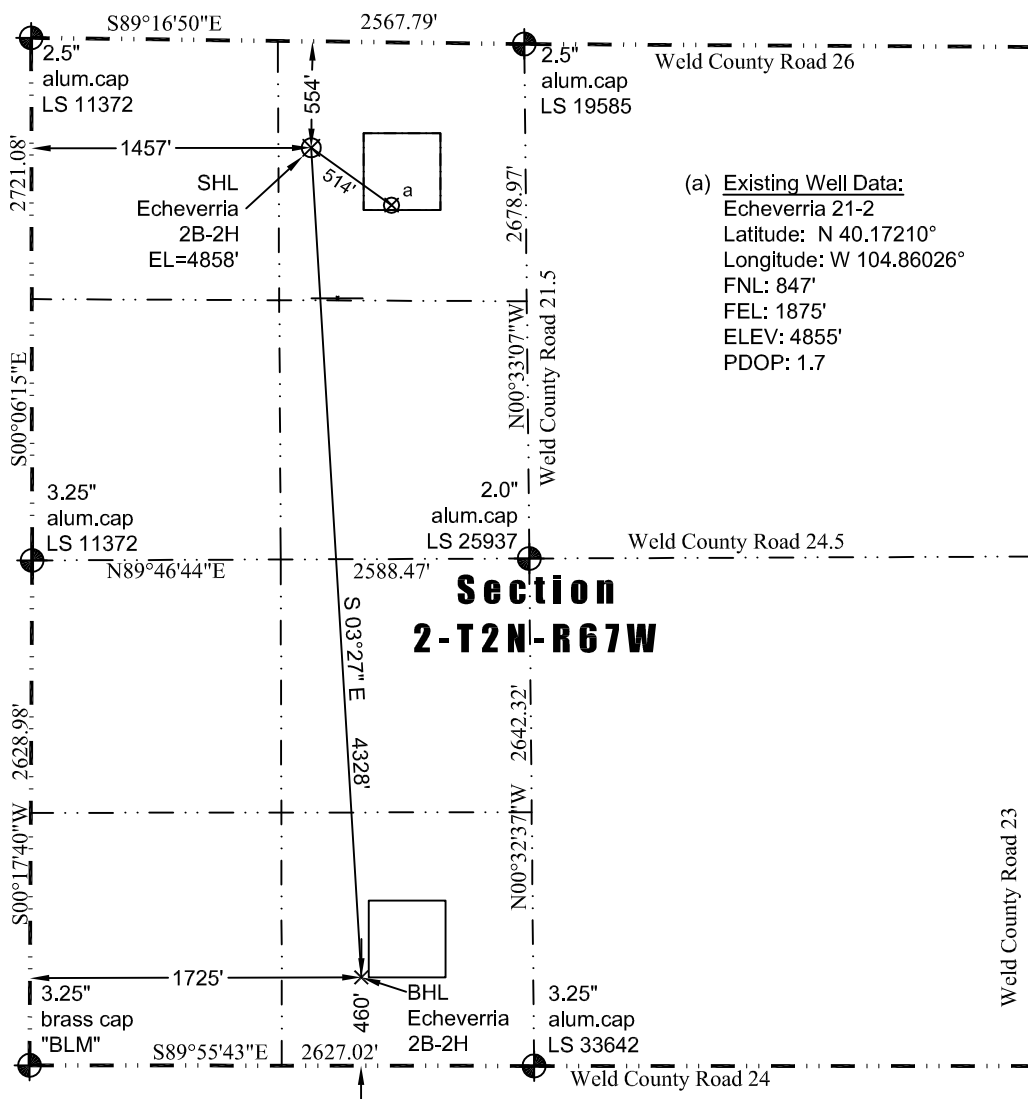


# JR Land Surveying, LLC

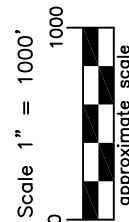
8114 Northstar Drive  
Windsor, Colorado 80528  
P. 970-576-4641

## WELL LOCATION CERTIFICATE

THIS MAP DOES NOT REPRESENT A BOUNDARY SURVEY



(a) Existing Well Data:  
Echeverria 21-2  
Latitude: N 40.17210°  
Longitude: W 104.86026°  
FNL: 847'  
FEL: 1875'  
ELEV: 4855'  
PDOP: 1.7



LEGEND  
— found survey monument  
— calculated dimension  
(c)

In accordance with a request from Jay Knutson of EnCana Oil & Gas (USA) Inc., JR Land Surveying, LLC has determined the location of the **Echeverria 2B-2H** well site to be SHL: 554' FNL and 1457' FWL, (BHL 460' FSL and 1725' FWL) as measured at ninety (90) degrees from the section lines of Section 2, Township 2 North, Range 67 West, 6th Principal Meridian, County of Weld, CO.

### Proposed Surface Hole Data:

Latitude: N 40.17293° (BHL 40.16107°)  
Longitude: W 104.86175° (BHL 104.86093°)  
PDOP: 2.4

### Nearest:

Building: 942' northeast  
Public Road: 539' north  
Property Line: 554' north  
Existing Well: Echeverria 21-2, 514' southeast  
Above Ground Utility: 575' north  
Railroad: 12,809' east  
Well Window: SHL is 273' outside

### Notes:

- 1) Bearings and distances based on NAD 83 Colorado North State Plane Coordinates using RTK GPS observations taken 2/29/12 by operator J.R. McGehee.
- 2) Conversion factor to ground (1.000271871).
- 3) Elevations based on NAVD 88 GPS heights and Geoid 2003 corrections.
- 4) See location drawing for visible improvements within 400 feet.
- 5) The surface use is cultivated field.

**NOTICE:** According to Colorado law you must commence any legal action based upon any defect in this W.L.C. within three years after you first discover such defect. In no event may any action based upon any defect in this W.L.C. be commenced more than ten years from this said date of the certification shown hereon.

I hereby certify that this Well Location Certificate was prepared by me or under my direct supervision on 4/10/12 for and on behalf of EnCana Oil & Gas (USA) Inc. That it is not a Land Survey Plat or an Improvement Survey Plat and that it is not to be relied upon for establishment of fences, buildings, or other future improvement lines.

JOHN ROBERT MCGEEHEE  
38219  
4-10-2012  
PROFESSIONAL LAND SURVEYOR

John Robert McGehee LS#38219  
Well: Echeverria 2B-2H WLC