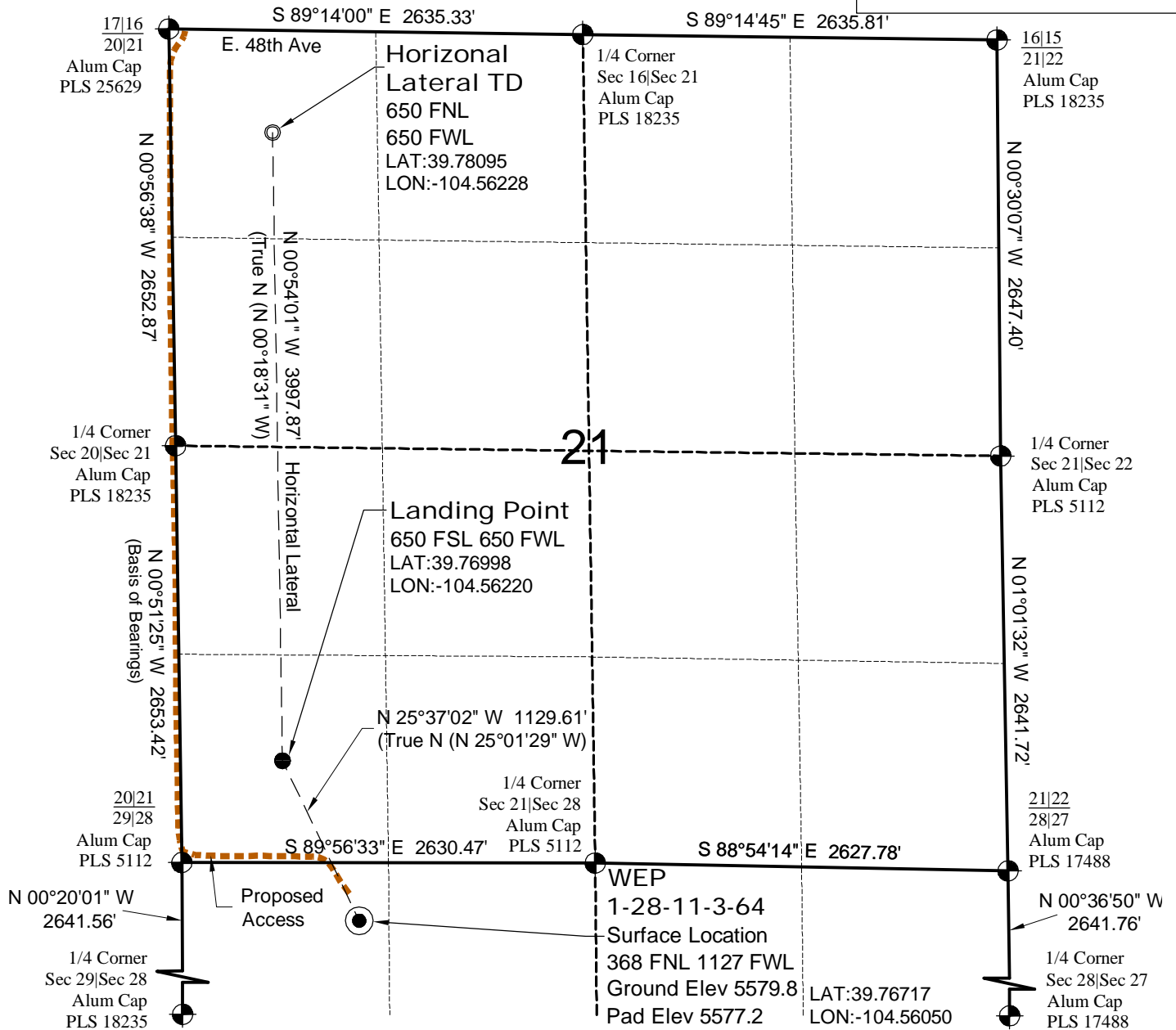


WELL LOCATION MAP

WEP
28-11-3-64 PAD

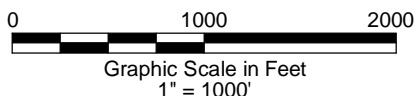


SURVEYOR'S STATEMENT

The undersigned hereby states that the well location shown hereon was staked on the ground based on existing monumentation and/or physical evidence found in the field and is correct to the best of my knowledge, information and belief.

NOTES

- 1.) Horizontal (NAD 83) and vertical (NAVD 88) datum is based on the Leica Geosystems SmartNet of Colorado.
 - 2.) All directions, distances, and dimensions shown hereon are based on coordinates from the "Colorado coordinate system of 1983 central zone" (article 52 of title 38, C.R.S.).
 - 3.) All section line dimensions shown hereon are based on field measurements of existing monuments and/or physical evidence found in the field unless otherwise indicated. Refer to land survey plats deposited in Weld County.
 - 4.) Physical features shown hereon are for graphical representation only.
 - 5.) See Form 2A for visible improvements within 400' of wellhead.
 - 6.) Distances to nearest section lines are measured perpendicularly.
 - 7.) This is not a land survey nor land survey plat.
 - 8.) Date of Survey 5/11/12; Date of Drawing 5/17/12. REV 0
- PDOP Reading: 1.6 Instrument Operator: Marc Woodard



CARRIZO OIL & GAS, INC
WEP 1-28-11-3-64

SL NW1/4 NW1/4 SEC.28 T3S R64W
HL TD NW1/4 NW1/4 SEC.21 T3S R64W
6th PM ADAMS COUNTY COLORADO