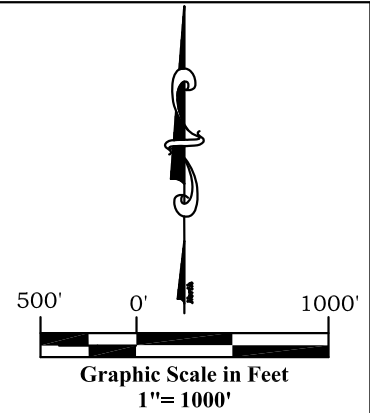
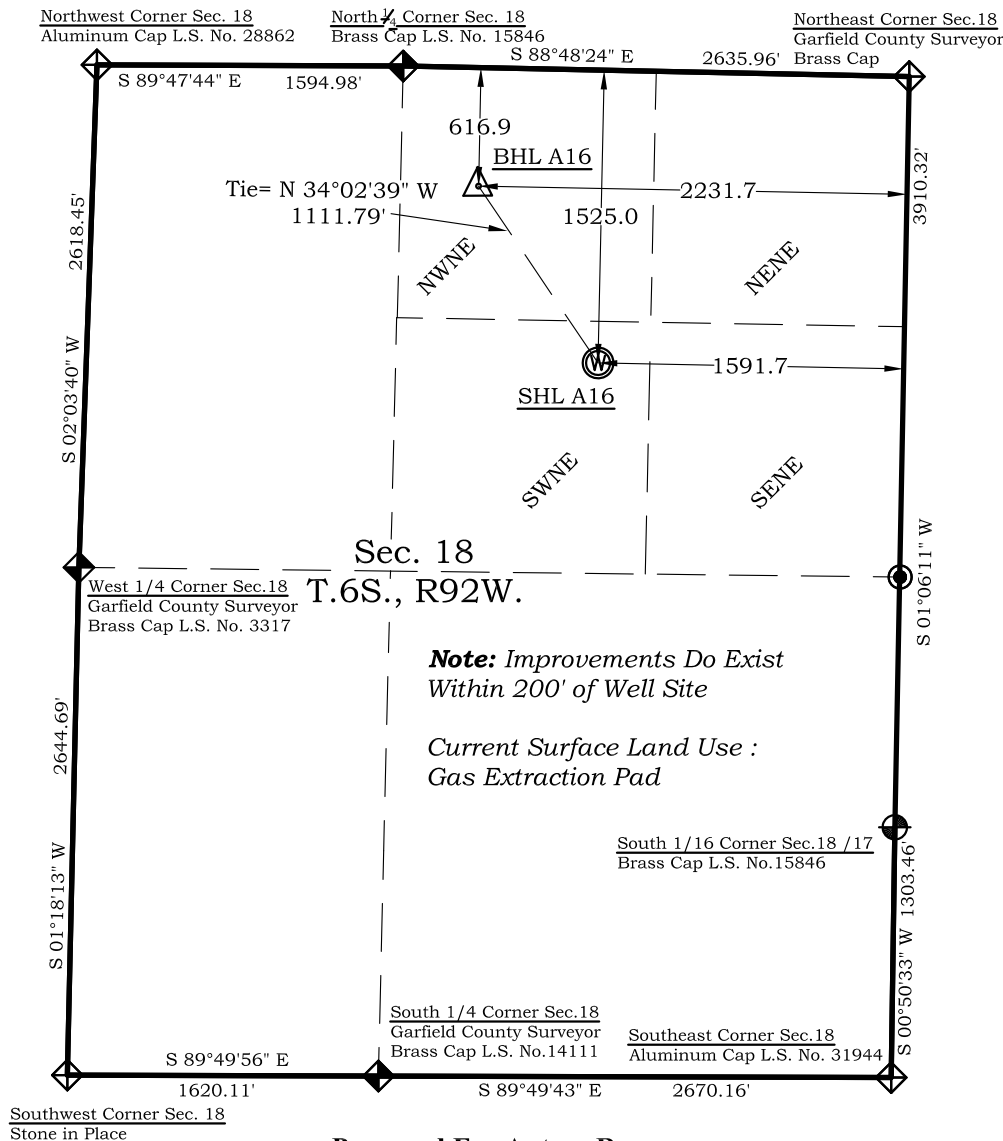


Well Location Plat

Dixon A16

Section 18, Township 6 South, Range 92 West



Legend

- ◈ - Field Surveyed Section Corner
- ◈ - Field Surveyed Quarter Corner
- - Calculated Section Corner Location
- ◈ - Field Surveyed 1/6 Corner

Surface: Dixon A16

1525' FNL

1592' FEL

Gnd El= 5535.0

Pad El= 5535.0

NAD83

Lat: 39.529610125°N

Long: 107.705643101°W

NAD27

Lat: 39.529629618°N

Long: 107.705026406°W

UTM 13 NORTH

NAD 1983

NORTHING

14366922.715

EASTING

877470.776

Bottom Hole: Dixon A16

617' FNL

2232' FEL

NAD83

Lat: 39.532086003°N

Long: 107.707946314°W

NAD27

Lat: 39.532105501°N

Long: 107.707329500°W

Note: Improvements Do Exist
Within 200' of Well Site

Current Surface Land Use :
Gas Extraction Pad

Prepared For Antero Resources

Proposed Dixon A16 Well Situate in The SW 1/4 NE 1/4 Section
18, Township 6 South, Range 92 West of the 6th. Principal
Meridian, County of Garfield, State of Colorado

SURVEYOR'S CERTIFICATE

I, SCOTT E. AIBNER, A REGISTERED LAND SURVEYOR, LICENSED UNDER THE LAWS OF THE STATE OF COLORADO, DO HEREBY CERTIFY THAT THE SURVEY SHOWN HEREON WAS PREPARED BY RIVER VALLEY SURVEY, INC., FOR ANTERO RESOURCES, BY ME OR UNDER MY DIRECT SUPERVISION AND THAT THIS PLAT IS A TRUE REPRESENTATION THEREOF.

SCOTT E. AIBNER
31143
PROFESSIONAL LAND SURVEYOR
BY: SCOTT E. AIBNER, COLORADO REG. NO. 31143

Notes:

1. LATITUDE AND LONGITUDE COORDINATES ARE DIFFERENTIALLY CORRECTED AND BASED ON PUBLISHED NGS CONTROL STATION "WDP-5". SYSTEM: UTM ZONE: 13 NORTH DATUM: NAD 1983 (CONUS)
2. ELEVATIONS ARE BASED ON NAVD OF 1983.
3. ALL BOTTOM AND TOP HOLE LOCATIONS ARE MEASURED 90 DEGREES FROM SECTION LINE.
4. USGS QUADRANGLE MAP "SILT".
5. CURRENT SURFACE LAND USE: GAS PAD.
6. PDOP AT THE TIME OF LOCATION OF SURFACE WELL = 3.6



River Valley Survey, Inc.
110 East 3rd. Street, Suite 213
Rifle, Colorado 81650
Ph: 970-379-7846

Project: Dixon A Pad

File No. 06001-07A

Field Date: 01-19-10

Scale: 1"= 1000'

Date: 05-21-12

Sheet: 1 of 1

Well Location Plat
Prepared For Antero Resources

Situate In:
SW 1/4 NE 1/4 Section 18, T6S., R. 92 W.
of the 6th P.M., Garfield County,
Colorado

