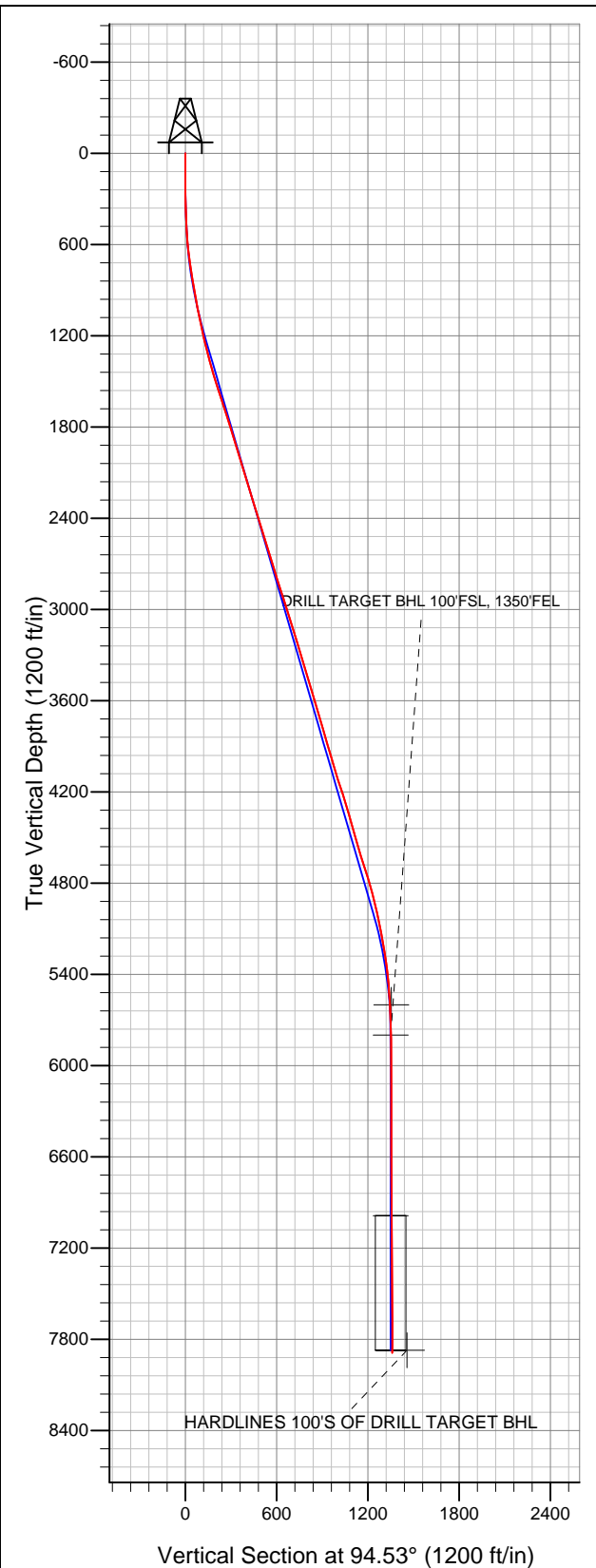


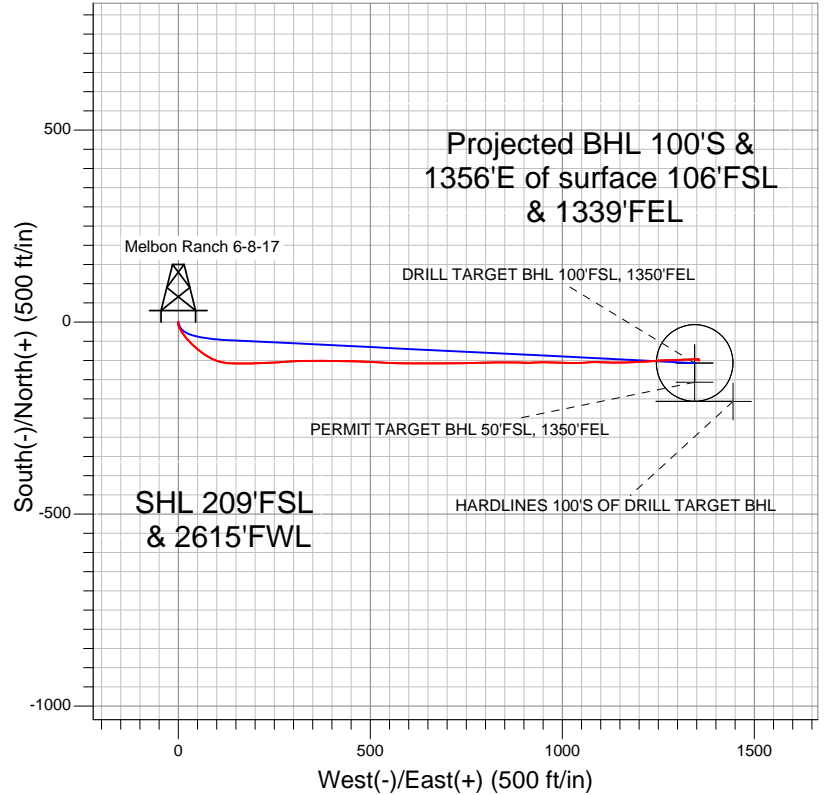
Well Name: Melbon Ranch 6-8-17

Surface Location: Melbon Ranch 2-8-17 Pad Sec.17-T2N-R65W
 North American Datum 1983 US State Plane 1983Colorado Northern Zone
 Ground Elevation: 4918.0

+N/-S	+E/-W	Northing	Easting	Latitude	Longitude	Slot
0.0	0.0	1291974.32	3227024.42	40.132010	-104.688060	
		Original Well Elev	WELL @ 4930.0ft (Original Well Elev)			



EnCana Oil & Gas Weld County CO



- LEGEND
- Wellbore #1
 - Melbon Ranch 6-8-17, Wellbore #1, Plan #1 (4-02-12) R V0
 - Survey #1

Final Survey Plot

Projected Final Survey -
 8080'MD & 7889'TVD @ 1360'VS
 0.60 deg Inc 221.20 deg AZ

Project: SEC.17-T2N-R65W
 Site: Melbon Ranch 2-8-17 Pad Sec.17-T2N-R65W
 Well: Melbon Ranch 6-8-17
 Plan: Wellbore #1



EnCana Oil & Gas Weld County CO

SEC.17-T2N-R65W

Melbon Ranch 2-8-17 Pad Sec.17-T2N-R65W

Melbon Ranch 6-8-17

Wellbore #1

Survey: Survey #1

Standard Survey Report

11 April, 2012

Company:	EnCana Oil & Gas Weld County CO	Local Co-ordinate Reference:	Well Melbon Ranch 6-8-17
Project:	SEC.17-T2N-R65W	TVD Reference:	WELL @ 4930.0ft (Original Well Elev)
Site:	Melbon Ranch 2-8-17 Pad Sec.17-T2N-R65W	MD Reference:	WELL @ 4930.0ft (Original Well Elev)
Well:	Melbon Ranch 6-8-17	North Reference:	True
Wellbore:	Wellbore #1	Survey Calculation Method:	Minimum Curvature
Design:	Wellbore #1	Database:	Landmark

Project	SEC.17-T2N-R65W, Weld County, Colorado		
Map System:	US State Plane 1983	System Datum:	Mean Sea Level
Geo Datum:	North American Datum 1983		Using Well Reference Point
Map Zone:	Colorado Northern Zone		Using geodetic scale factor

Site	Melbon Ranch 2-8-17 Pad Sec.17-T2N-R65W				
Site Position:		Northing:	1,291,973.98ft	Latitude:	40.132010
From:	Lat/Long	Easting:	3,226,985.28ft	Longitude:	-104.688200
Position Uncertainty:	0.0 ft	Slot Radius:	"	Grid Convergence:	0.52 °

Well	Melbon Ranch 6-8-17					
Well Position	+N/-S	0.0 ft	Northing:	1,291,974.32 ft	Latitude:	40.132010
	+E/-W	0.0 ft	Easting:	3,227,024.42 ft	Longitude:	-104.688060
Position Uncertainty		0.0 ft	Wellhead Elevation:	ft	Ground Level:	4,918.0 ft

Wellbore	Wellbore #1				
Magnetics	Model Name	Sample Date	Declination (°)	Dip Angle (°)	Field Strength (nT)
	IGRF2010	4/2/2012	8.69	66.82	52,914

Design	Wellbore #1				
Audit Notes:					
Version:	1.0	Phase:	ACTUAL	Tie On Depth:	0.0
Vertical Section:	Depth From (TVD) (ft)	+N/-S (ft)	+E/-W (ft)	Direction (°)	
	5,800.0	0.0	0.0	94.53	

Survey Program	Date	4/11/2012			
From (ft)	To (ft)	Survey (Wellbore)	Tool Name	Description	
90.0	8,080.0	Survey #1 (Wellbore #1)	MWD	MWD - Standard	

Survey										
Measured Depth (ft)	Inclination (°)	Azimuth (°)	Vertical Depth (ft)	+N/-S (ft)	+E/-W (ft)	Vertical Section (ft)	Dogleg Rate (°/100ft)	Build Rate (°/100ft)	Turn Rate (°/100ft)	
0.0	0.00	0.00	0.0	0.0	0.0	0.0	0.00	0.00	0.00	
90.0	0.70	207.70	90.0	-0.5	-0.3	-0.2	0.78	0.78	0.00	
181.0	1.30	187.80	181.0	-2.0	-0.7	-0.5	0.75	0.66	-21.87	
273.0	2.60	164.80	272.9	-5.0	-0.2	0.2	1.62	1.41	-25.00	
364.0	3.70	163.90	363.8	-9.9	1.1	1.9	1.21	1.21	-0.99	
456.0	5.00	153.90	455.5	-16.3	3.7	5.0	1.63	1.41	-10.87	
548.0	7.30	146.70	547.0	-24.8	8.7	10.6	2.63	2.50	-7.83	
639.0	9.40	142.50	637.0	-35.5	16.4	19.1	2.40	2.31	-4.62	
733.0	11.00	139.00	729.5	-48.4	26.9	30.7	1.82	1.70	-3.72	
827.0	11.90	131.10	821.7	-61.5	40.1	44.8	1.92	0.96	-8.40	
923.0	11.70	130.00	915.6	-74.3	55.0	60.7	0.31	-0.21	-1.15	
1,017.0	12.10	123.50	1,007.6	-85.9	70.5	77.1	1.49	0.43	-6.91	
1,111.0	12.70	115.10	1,099.4	-95.7	88.1	95.4	2.02	0.64	-8.94	

Company:	EnCana Oil & Gas Weld County CO	Local Co-ordinate Reference:	Well Melbon Ranch 6-8-17
Project:	SEC.17-T2N-R65W	TVD Reference:	WELL @ 4930.0ft (Original Well Elev)
Site:	Melbon Ranch 2-8-17 Pad Sec.17-T2N-R65W	MD Reference:	WELL @ 4930.0ft (Original Well Elev)
Well:	Melbon Ranch 6-8-17	North Reference:	True
Wellbore:	Wellbore #1	Survey Calculation Method:	Minimum Curvature
Design:	Wellbore #1	Database:	Landmark

Survey									
Measured Depth (ft)	Inclination (°)	Azimuth (°)	Vertical Depth (ft)	+N/-S (ft)	+E/-W (ft)	Vertical Section (ft)	Dogleg Rate (°/100ft)	Build Rate (°/100ft)	Turn Rate (°/100ft)
1,204.0	13.50	105.90	1,190.0	-103.0	107.8	115.6	2.40	0.86	-9.89
1,298.0	13.70	95.50	1,281.4	-107.1	129.5	137.5	2.61	0.21	-11.06
1,392.0	15.10	90.60	1,372.5	-108.3	152.8	160.9	1.97	1.49	-5.21
1,485.0	16.80	87.80	1,461.9	-107.9	178.3	186.3	2.01	1.83	-3.01
1,579.0	18.20	88.90	1,551.5	-107.1	206.6	214.4	1.53	1.49	1.17
1,673.0	18.30	87.30	1,640.8	-106.1	236.0	243.6	0.54	0.11	-1.70
1,766.0	18.50	86.60	1,729.0	-104.5	265.3	272.7	0.32	0.22	-0.75
1,860.0	17.60	85.20	1,818.4	-102.5	294.4	301.5	1.06	-0.96	-1.49
1,954.0	16.50	88.00	1,908.3	-100.8	321.9	328.8	1.46	-1.17	2.98
2,047.0	16.60	91.20	1,997.4	-100.6	348.3	355.2	0.99	0.11	3.44
2,141.0	17.50	90.40	2,087.3	-101.0	375.9	382.7	0.99	0.96	-0.85
2,235.0	17.00	91.30	2,177.1	-101.4	403.8	410.5	0.60	-0.53	0.96
2,328.0	17.10	90.10	2,266.0	-101.7	431.0	437.7	0.39	0.11	-1.29
2,422.0	17.30	90.40	2,355.8	-101.9	458.8	465.4	0.23	0.21	0.32
2,516.0	17.60	95.00	2,445.5	-103.2	487.0	493.6	1.50	0.32	4.89
2,609.0	17.50	91.50	2,534.1	-104.8	515.0	521.6	1.14	-0.11	-3.76
2,703.0	17.00	92.90	2,623.9	-105.9	542.8	549.5	0.69	-0.53	1.49
2,797.0	16.80	92.60	2,713.8	-107.2	570.1	576.8	0.23	-0.21	-0.32
2,890.0	16.70	89.20	2,802.9	-107.6	596.9	603.5	1.06	-0.11	-3.66
2,984.0	18.30	90.80	2,892.5	-107.6	625.2	631.7	1.78	1.70	1.70
3,078.0	18.10	89.90	2,981.8	-107.8	654.5	661.0	0.37	-0.21	-0.96
3,171.0	17.50	89.70	3,070.4	-107.7	682.9	689.3	0.65	-0.65	-0.22
3,265.0	17.30	89.70	3,160.1	-107.5	711.0	717.3	0.21	-0.21	0.00
3,359.0	16.80	88.30	3,250.0	-107.1	738.6	744.8	0.69	-0.53	-1.49
3,452.0	17.00	88.50	3,338.9	-106.3	765.6	771.6	0.22	0.22	0.22
3,546.0	16.70	88.50	3,428.9	-105.6	792.9	798.7	0.32	-0.32	0.00
3,640.0	16.10	89.60	3,519.1	-105.2	819.4	825.1	0.72	-0.64	1.17
3,733.0	16.40	90.30	3,608.4	-105.1	845.4	851.1	0.39	0.32	0.75
3,827.0	16.80	90.40	3,698.4	-105.3	872.3	877.9	0.43	0.43	0.11
3,920.0	16.70	92.00	3,787.5	-105.9	899.1	904.6	0.51	-0.11	1.72
4,014.0	15.90	87.50	3,877.7	-105.8	925.4	930.9	1.59	-0.85	-4.79
4,108.0	16.60	87.60	3,968.0	-104.6	951.7	957.0	0.75	0.74	0.11
4,201.0	16.40	94.10	4,057.1	-105.0	978.1	983.3	2.00	-0.22	6.99
4,295.0	18.60	91.90	4,146.8	-106.5	1,006.3	1,011.6	2.44	2.34	-2.34
4,389.0	18.00	88.30	4,236.0	-106.5	1,035.8	1,041.0	1.36	-0.64	-3.83
4,482.0	16.50	85.50	4,324.9	-105.1	1,063.3	1,068.3	1.84	-1.61	-3.01
4,576.0	14.80	90.60	4,415.4	-104.2	1,088.7	1,093.5	2.32	-1.81	5.43
4,670.0	16.50	93.10	4,505.9	-105.0	1,114.0	1,118.8	1.95	1.81	2.66
4,763.0	17.20	89.60	4,594.9	-105.6	1,140.9	1,145.7	1.33	0.75	-3.76
4,857.0	17.80	88.00	4,684.5	-105.0	1,169.2	1,173.8	0.82	0.64	-1.70
4,951.0	17.10	87.30	4,774.2	-103.9	1,197.4	1,201.8	0.78	-0.74	-0.74
5,044.0	14.90	85.70	4,863.6	-102.3	1,222.9	1,227.2	2.41	-2.37	-1.72
5,138.0	13.50	86.40	4,954.7	-100.7	1,245.9	1,250.0	1.50	-1.49	0.74
5,232.0	11.70	87.80	5,046.5	-99.7	1,266.4	1,270.3	1.94	-1.91	1.49
5,325.0	11.30	87.60	5,137.6	-98.9	1,284.9	1,288.7	0.43	-0.43	-0.22
5,419.0	9.50	88.90	5,230.1	-98.4	1,301.9	1,305.6	1.93	-1.91	1.38
5,513.0	7.70	88.70	5,323.0	-98.1	1,316.0	1,319.6	1.92	-1.91	-0.21
5,606.0	6.20	86.20	5,415.3	-97.6	1,327.2	1,330.8	1.65	-1.61	-2.69
5,700.0	4.50	86.10	5,508.9	-97.0	1,335.9	1,339.4	1.81	-1.81	-0.11
5,791.3	3.04	87.54	5,600.0	-96.7	1,341.9	1,345.4	1.60	-1.60	1.57
PERMIT TARGET BHL 50'FSL, 1350'FEL									
5,794.0	3.00	87.60	5,602.7	-96.7	1,342.1	1,345.5	1.60	-1.59	2.36
5,887.0	1.50	97.00	5,695.6	-96.7	1,345.7	1,349.2	1.66	-1.61	10.11
5,981.0	0.90	104.20	5,789.6	-97.1	1,347.7	1,351.1	0.66	-0.64	7.66

Company: EnCana Oil & Gas Weld County CO
Project: SEC.17-T2N-R65W
Site: Melbon Ranch 2-8-17 Pad Sec.17-T2N-R65W
Well: Melbon Ranch 6-8-17
Wellbore: Wellbore #1
Design: Wellbore #1

Local Co-ordinate Reference: Well Melbon Ranch 6-8-17
TVD Reference: WELL @ 4930.0ft (Original Well Elev)
MD Reference: WELL @ 4930.0ft (Original Well Elev)
North Reference: True
Survey Calculation Method: Minimum Curvature
Database: Landmark

Survey

Measured Depth (ft)	Inclination (°)	Azimuth (°)	Vertical Depth (ft)	+N/-S (ft)	+E/-W (ft)	Vertical Section (ft)	Dogleg Rate (°/100ft)	Build Rate (°/100ft)	Turn Rate (°/100ft)
5,991.4	0.88	107.37	5,800.0	-97.1	1,347.8	1,351.3	0.52	-0.23	30.34
DRILL TARGET BHL 100'FSL, 1350'FEL									
6,075.0	0.80	137.20	5,883.6	-97.7	1,348.8	1,352.3	0.52	-0.09	35.70
6,168.0	0.60	139.70	5,976.6	-98.6	1,349.6	1,353.1	0.22	-0.22	2.69
6,262.0	0.20	248.70	6,070.6	-99.0	1,349.7	1,353.3	0.74	-0.43	115.96
6,356.0	0.20	16.10	6,164.6	-98.9	1,349.6	1,353.2	0.38	0.00	135.53
6,450.0	0.30	37.00	6,258.6	-98.6	1,349.8	1,353.4	0.14	0.11	22.23
6,544.0	0.10	244.30	6,352.6	-98.4	1,349.9	1,353.4	0.42	-0.21	-162.45
6,638.0	0.10	63.20	6,446.6	-98.4	1,349.9	1,353.4	0.21	0.00	190.32
6,732.0	0.40	61.10	6,540.6	-98.2	1,350.3	1,353.8	0.32	0.32	-2.23
6,827.0	0.20	68.70	6,635.6	-98.0	1,350.7	1,354.2	0.21	-0.21	8.00
6,921.0	0.40	49.10	6,729.6	-97.7	1,351.1	1,354.6	0.24	0.21	-20.85
7,015.0	0.60	22.80	6,823.6	-97.0	1,351.5	1,355.0	0.32	0.21	-27.98
7,110.0	0.40	72.00	6,918.6	-96.5	1,352.0	1,355.4	0.48	-0.21	51.79
7,179.4	0.39	87.47	6,987.9	-96.4	1,352.5	1,355.9	0.15	-0.01	22.30
TARGET CIRCLE 100'FSL & 1350'FEL									
7,204.0	0.40	92.90	7,012.6	-96.4	1,352.7	1,356.1	0.15	0.02	22.06
7,298.0	0.20	78.30	7,106.6	-96.4	1,353.2	1,356.6	0.23	-0.21	-15.53
7,392.0	0.50	62.50	7,200.6	-96.2	1,353.7	1,357.1	0.33	0.32	-16.81
7,487.0	0.70	121.70	7,295.6	-96.3	1,354.6	1,357.9	0.65	0.21	62.32
7,581.0	0.40	134.00	7,389.5	-96.8	1,355.3	1,358.7	0.34	-0.32	13.09
7,675.0	0.50	145.60	7,483.5	-97.4	1,355.8	1,359.2	0.14	0.11	12.34
7,770.0	0.60	142.00	7,578.5	-98.1	1,356.3	1,359.8	0.11	0.11	-3.79
7,864.0	0.60	152.00	7,672.5	-98.9	1,356.8	1,360.4	0.11	0.00	10.64
7,958.0	0.40	221.40	7,766.5	-99.6	1,356.8	1,360.5	0.63	-0.21	73.83
8,035.0	0.60	221.20	7,843.5	-100.1	1,356.4	1,360.1	0.26	0.26	-0.26
8,063.7	0.60	221.20	7,872.2	-100.3	1,356.2	1,359.9	0.00	0.00	0.00
HARDLINES 100'S OF DRILL TARGET BHL									
8,080.0	0.60	221.20	7,888.5	-100.5	1,356.1	1,359.8	0.00	0.00	0.00

Checked By: _____ Approved By: _____ Date: _____