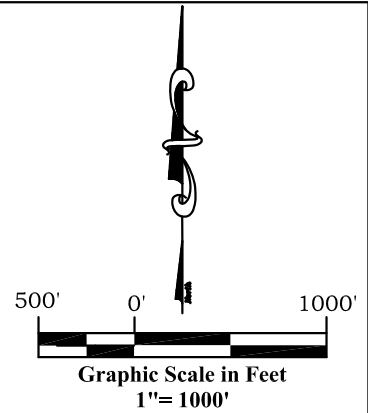
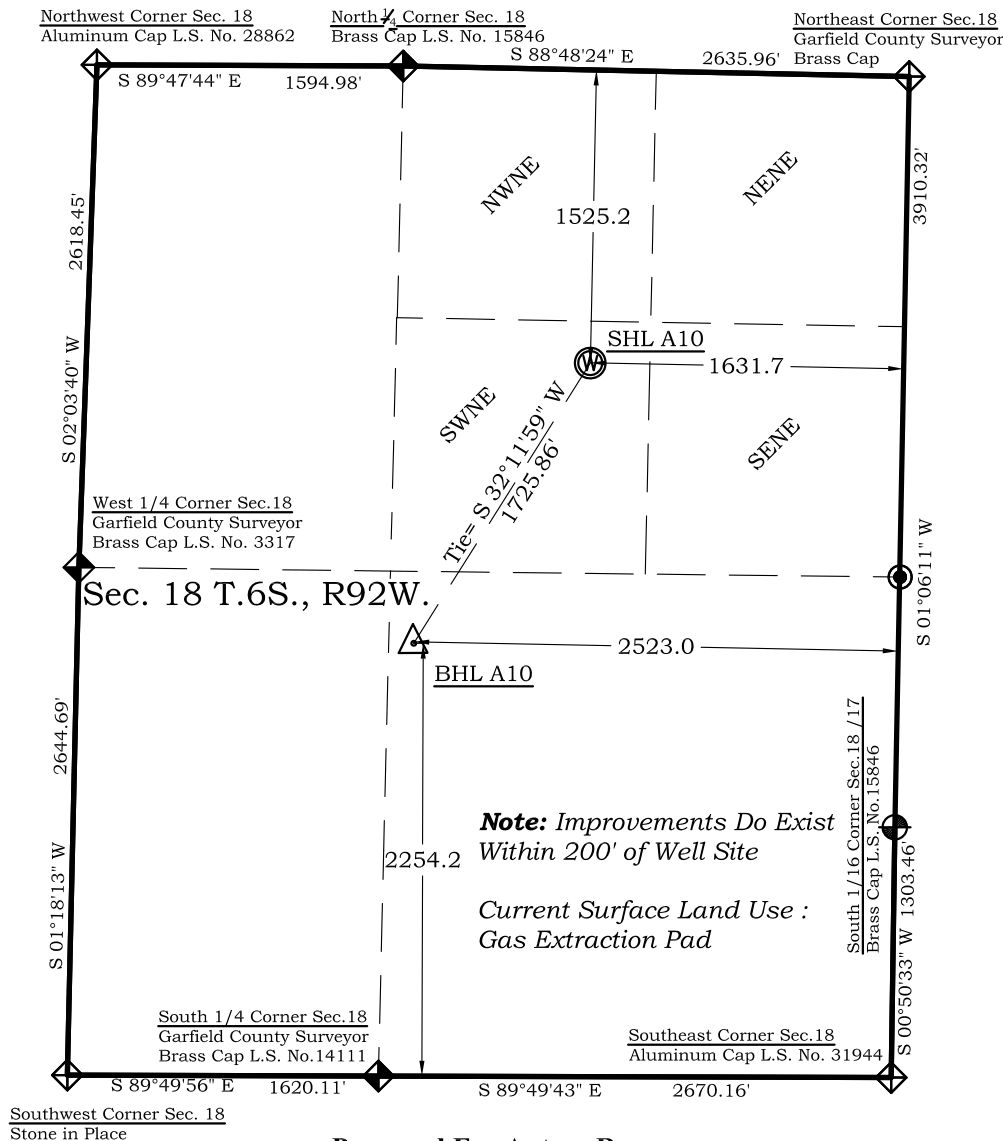


Well Location Plat

Dixon A10

Section 18, Township 6 South, Range 92 West



Legend

- ◈ - Field Surveyed Section Corner
- ◈ - Field Surveyed Quarter Corner
- ⊙ - Calculated Section Corner Location
- ⊙ - Field Surveyed 1/6 Corner

Surface: Dixon A10

1525' FNL

1632' FEL

Gnd El= 5535.0

Pad El= 5535.0

NAD83

Lat: 39.529608575°N

Long: 107.705784855°W

NAD27

Lat: 39.529628068°N

Long: 107.705168155°W

UTM 13 NORTH

NAD 1983

NORTHING

14366923.353

EASTING

877430.782

Bottom Hole: Dixon A10

2254' FSL

2523' FEL

NAD83

Lat: 39.525526207°N

Long: 107.708887057°W

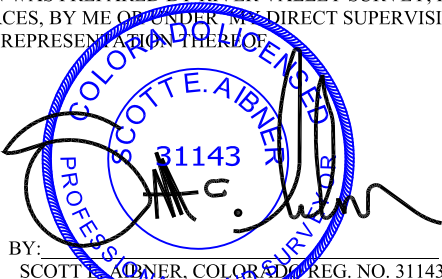
NAD27

Lat: 39.525545701°N

Long: 107.708270300°W

SURVEYOR'S CERTIFICATE

I, SCOTT E. AIBNER, A REGISTERED LAND SURVEYOR, LICENSED UNDER THE LAWS OF THE STATE OF COLORADO DO HEREBY CERTIFY THAT THE SURVEY SHOWN HEREON WAS PREPARED BY RIVER VALLEY SURVEY, INC., FOR ANTERO RESOURCES, BY ME OR UNDER MY DIRECT SUPERVISION AND THAT THIS PLAT IS A TRUE REPRESENTATION THEREOF.

BY:  SCOTT E. AIBNER, COLORADO REG. NO. 31143

Notes:

1. LATITUDE AND LONGITUDE COORDINATES ARE DIFFERENTIALLY CORRECTED AND BASED ON PUBLISHED NGS CONTROL STATION "WDP-5". SYSTEM: UTM ZONE: 13 NORTH DATUM: NAD 1983 (CONUS)
2. ELEVATIONS ARE BASED ON NAVD OF 1983.
3. ALL BOTTOM AND TOP HOLE LOCATIONS ARE MEASURED 90 DEGREES FROM SECTION LINE.
4. USGS QUADRANGLE MAP "SILT".
5. CURRENT SURFACE LAND USE: GAS PAD.
6. PDOP AT THE TIME OF LOCATION OF SURFACE WELL = 3.6



River Valley Survey, Inc.
110 East 3rd. Street, Suite 213
Rifle, Colorado 81650
Ph: 970-379-7846

Project: Dixon A Pad

File No. 06001-07A

Field Date: 01-19-10

Scale: 1"= 1000'

Date: 05-21-12

Sheet: 1 of 1

Well Location Plat
Prepared For Antero Resources

Situate In:
SW1/4NE1/4 Section 18, T6S., R. 92 W.
of the 6th P.M., Garfield County,
Colorado

