

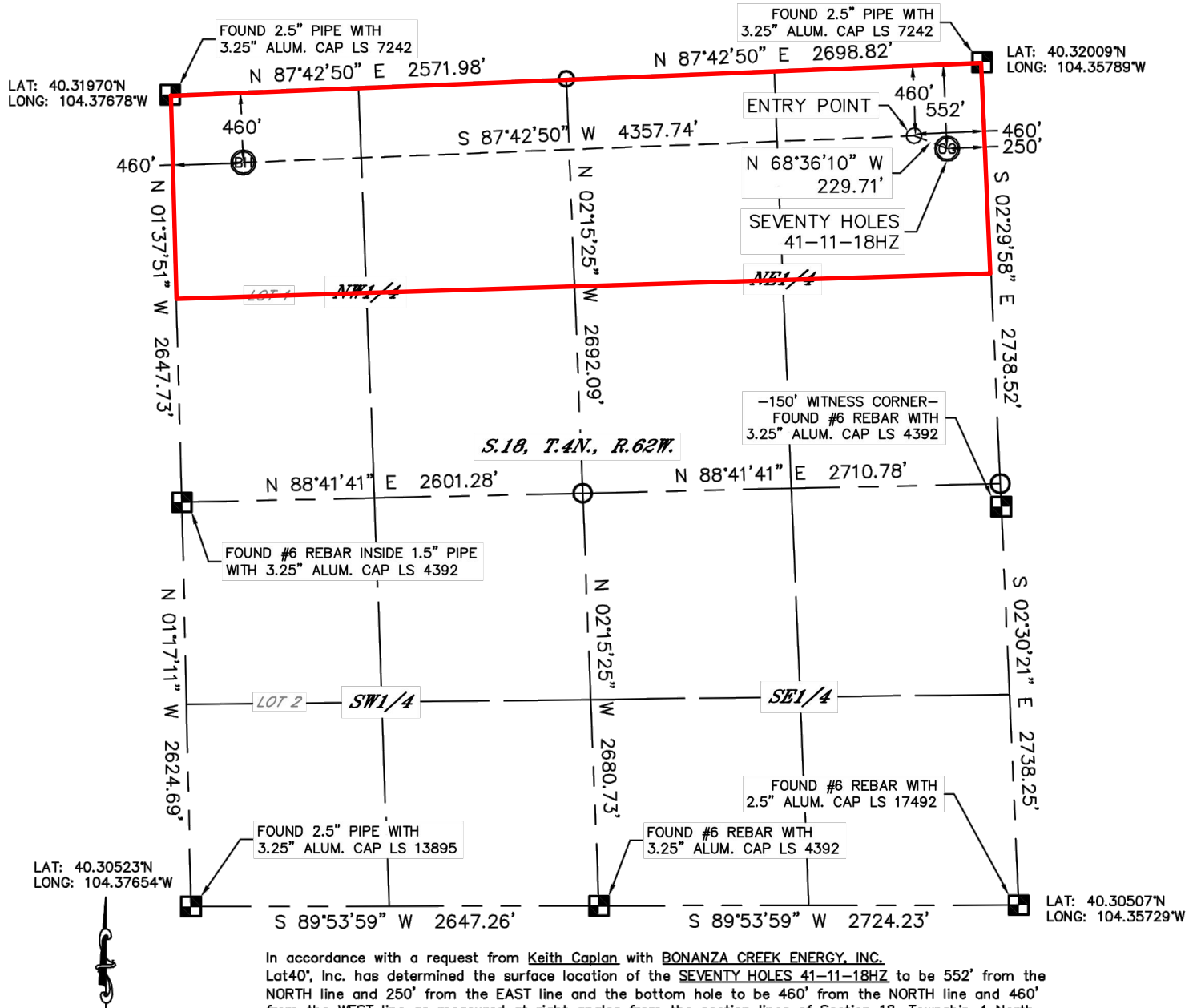


Lat40°, Inc. 1635 Foxtrail Drive, Suite 325 Loveland, CO 970-776-3321

## WELL LOCATION CERTIFICATE

THIS MAP DOES NOT REPRESENT A BOUNDARY SURVEY

SECTION: 18  
TOWNSHIP: 4N  
RANGE: 62W



Wellbore Spacing Unit Outline



File: G:\Bakersfield\Operations\Rocky Mtn Region\Permitting\COGCC Business\Bonanza\_Creek\_logo\_full.png  
Shading for invalid reference

### Wellbore Spacing Unit Map

01 June 2012 ksc

Seventy Holes 41-11-18HZ  
N/2 N/2 Sec 18 T4N R62W 6th PM  
Weld County, Colorado