

77N, R89W, 6th P.M.

AXIA ENERGY

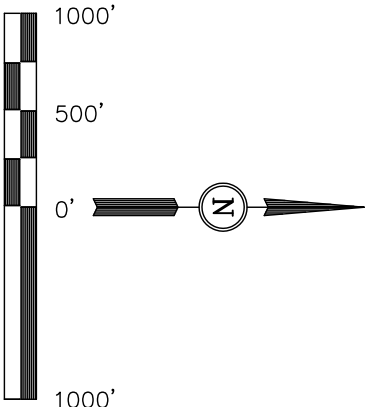
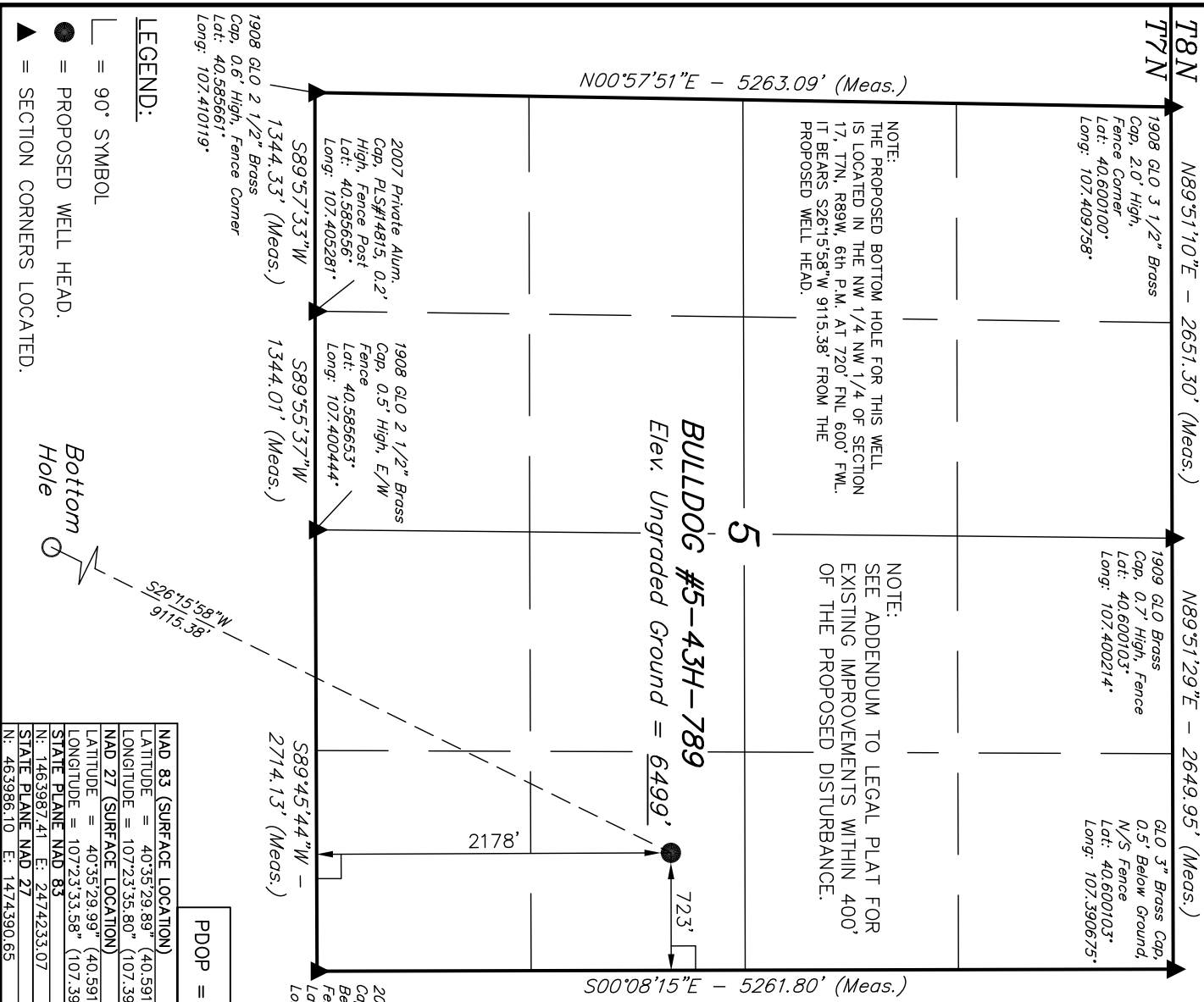
Well location, BULLDOG #5-43H-789 (SURFACE LOCATION), located as shown in the NE 1/4 SE 1/4 of Section 5, 77N, R89W, 6th P.M., Moffat County, Colorado.

BASIS OF ELEVATION

SPOT ELEVATION LOCATED AT THE SOUTHWEST CORNER OF SECTION 15, 77N, R91W, 6th P.M. TAKEN FROM THE CRAIG QUADRANGLE, COLORADO, MOFFAT COUNTY, 7.5 MINUTE QUAD (TOPOGRAPHIC MAP) PUBLISHED BY THE UNITED STATES DEPARTMENT OF THE INTERIOR, GEOLOGICAL SURVEY. SAID ELEVATION IS MARKED AS BEING 6672 FEET.

BASIS OF BEARINGS

BASIS OF BEARINGS IS A G.P.S. OBSERVATION.



CERTIFICATE

THIS IS TO CERTIFY THAT THE ABOVE PLAT WAS PREPARED FROM FIELD NOTES OF ACTUAL SURVEYS MADE BY ME OR UNDER MY SUPERVISION AND THAT THE SAME ARE TRUE AND CORRECT TO THE BEST OF MY KNOWLEDGE AND BELIEF.

REGISTERED LAND SURVEYOR
REGISTRATION NO. 14592
STATE OF COLORADO
04-25-12

UINTAH ENGINEERING & LAND SURVEYING
85 SOUTH 200 EAST - VERNAL, UTAH 84078
(435) 789-1017

NAD 83 (SURFACE LOCATION)	
LATITUDE = 40°35'29.89" (40.591636)	
LONGITUDE = 107°23'35.80" (107.393278)	
NAD 27 (SURFACE LOCATION)	
LATITUDE = 40°35'29.99" (40.591664)	
LONGITUDE = 107°23'33.58" (107.392661)	
STATE PLANE NAD 83	
N: 1463987.41 E: 2474233.07	
STATE PLANE NAD 27	
N: 463986.10 E: 1474390.65	
SCALE 1" = 1000'	DATE SURVEYED: 03-23-12
PARTY G.O. S.W. Z.L.	DATE DRAWN: 04-04-12
WEATHER WARM	REFERENCES G.L.O. PLAT
	FILE AXIA ENERGY

PDOP = 1.5

- LEGEND:
- 90° SYMBOL
 - PROPOSED WELL HEAD.
 - SECTION CORNERS LOCATED.

77N, R89W, 6th P.M.

BULLDOG #5-43H-789

Surface Location

589°45'39"W - 2693.48' (Meas.)

589°44'37"W - 2692.12' (Meas.)

1980 GLO 3" Brass Cap,
0.5' High, Fence Corner
Lat: 40.600100°
Long: 107.410031°

1909 GLO 3" Brass Cap,
0.4' High, Fence Corner
Lat: 40.571219°
Long: 107.400339°

1909 GLO 3" Brass Cap,
0.6' High, E/S Fence
Lat: 40.571236°
Long: 107.390653°

600'
720'
S26°15'58"W
91°15'38'

Target
Bottom
Hole

NOTE:
THE PROPOSED BOTTOM HOLE BEARS S26°15'58"W
91°15'38' FROM THE PROPOSED WELL HEAD WHICH
IS LOCATED IN THE NW 1/4 NW 1/4 OF SECTION
17, T7N, R89W, 6th P.M. AT 2178' FSL 723' FEL.

17

S00°22'09"E - 5279.91' (Meas.)

S00°01'W - 5272.74' (G.L.O.)

1908 GLO 2 1/2"
Brass Cap 0.9' High,
Fence Corner
Lat: 40.556717°
Long: 107.409950°

S89°54'E - 5362.50' (G.L.O.)

LEGEND:

- 90° SYMBOL
- PROPOSED WELL HEAD.
- SECTION CORNERS LOCATED.

AXIA ENERGY

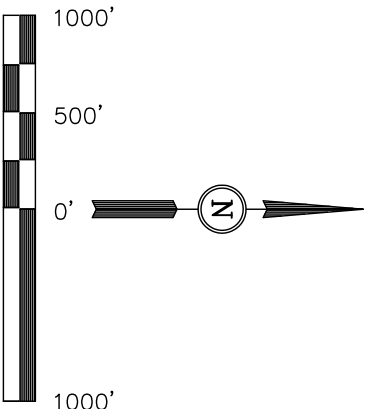
Well location, BULLDOG #5-43H-789 (TARGET
BOTTOM HOLE), located as shown in the NW 1/4
NW 1/4 of Section 17, T7N, R89W, 6th P.M.,
Moffat County, Colorado.

BASIS OF ELEVATION

SPOT ELEVATION LOCATED AT THE SOUTHWEST CORNER OF
SECTION 15, T7N, R91W, 6th P.M. TAKEN FROM THE CRAIG
QUADRANGLE, COLORADO, MOFFAT COUNTY, 7.5 MINUTE QUAD
(TOPOGRAPHIC MAP) PUBLISHED BY THE UNITED STATES
DEPARTMENT OF THE INTERIOR, GEOLOGICAL SURVEY. SAID
ELEVATION IS MARKED AS BEING 6672 FEET.

BASIS OF BEARINGS

BASIS OF BEARINGS IS A G.P.S. OBSERVATION.



CERTIFICATE

THIS IS TO CERTIFY THAT THE ABOVE PLAT WAS PREPARED FROM
FIELD NOTES OF ACTUAL SURVEYS MADE BY ME OR UNDER MY
SUPERVISION AND THAT THE SAME ARE TRUE AND CORRECT TO THE
BEST OF MY KNOWLEDGE AND BELIEF.

REGISTERED LAND SURVEYOR
REGISTRATION NO. 145913
STATE OF COLORADO

04-25-12

UINTAH ENGINEERING & LAND SURVEYING

85 SOUTH 200 EAST - VERNAL, UTAH 84078

(435) 789-1017

SCALE 1" = 1000'	DATE SURVEYED: 03-23-12	DATE DRAWN: 04-04-12
PARTY G.O. S.W. Z.L.	REFERENCES G.L.O. PLAT	
WEATHER WARM	FILE AXIA ENERGY	