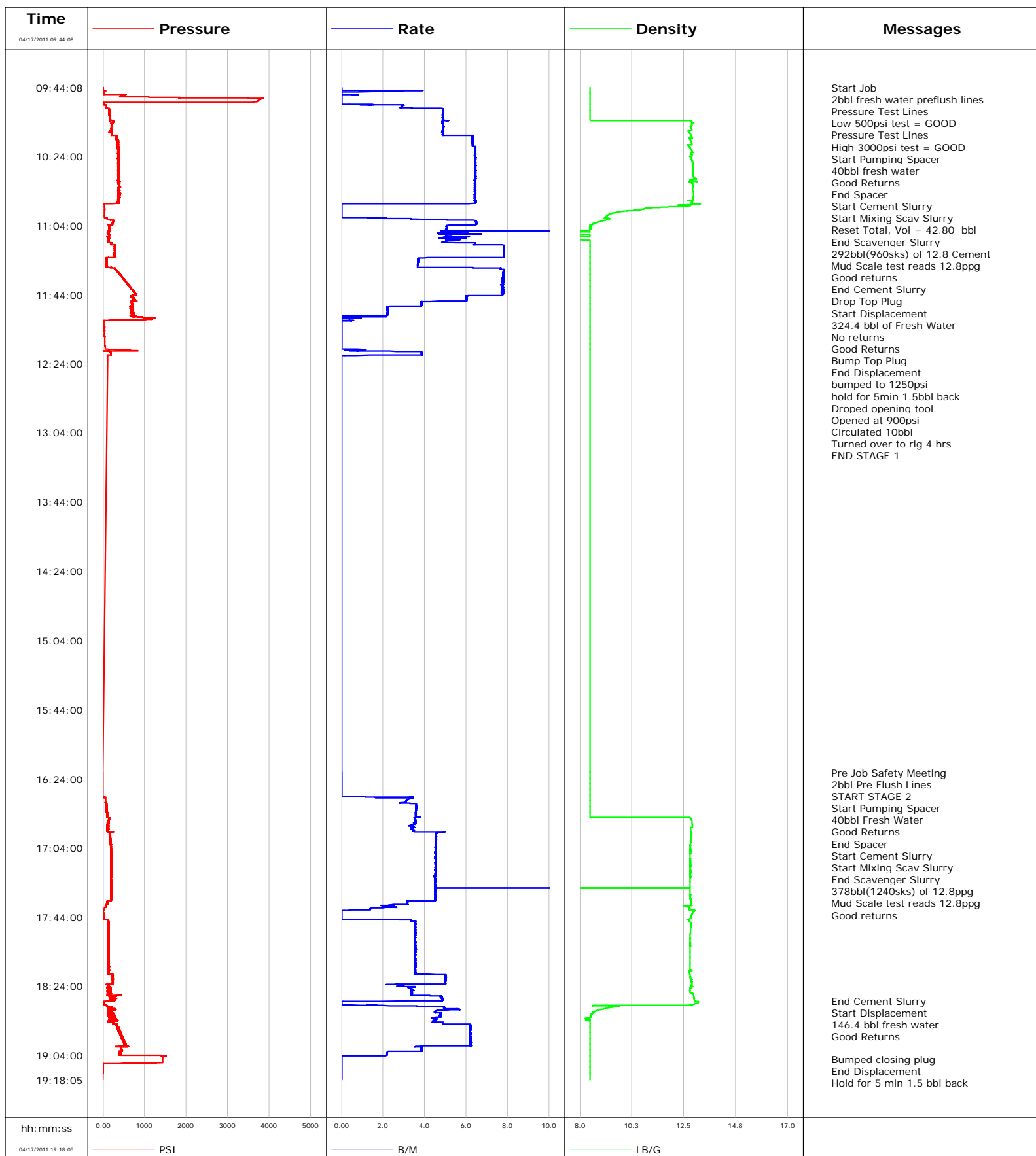
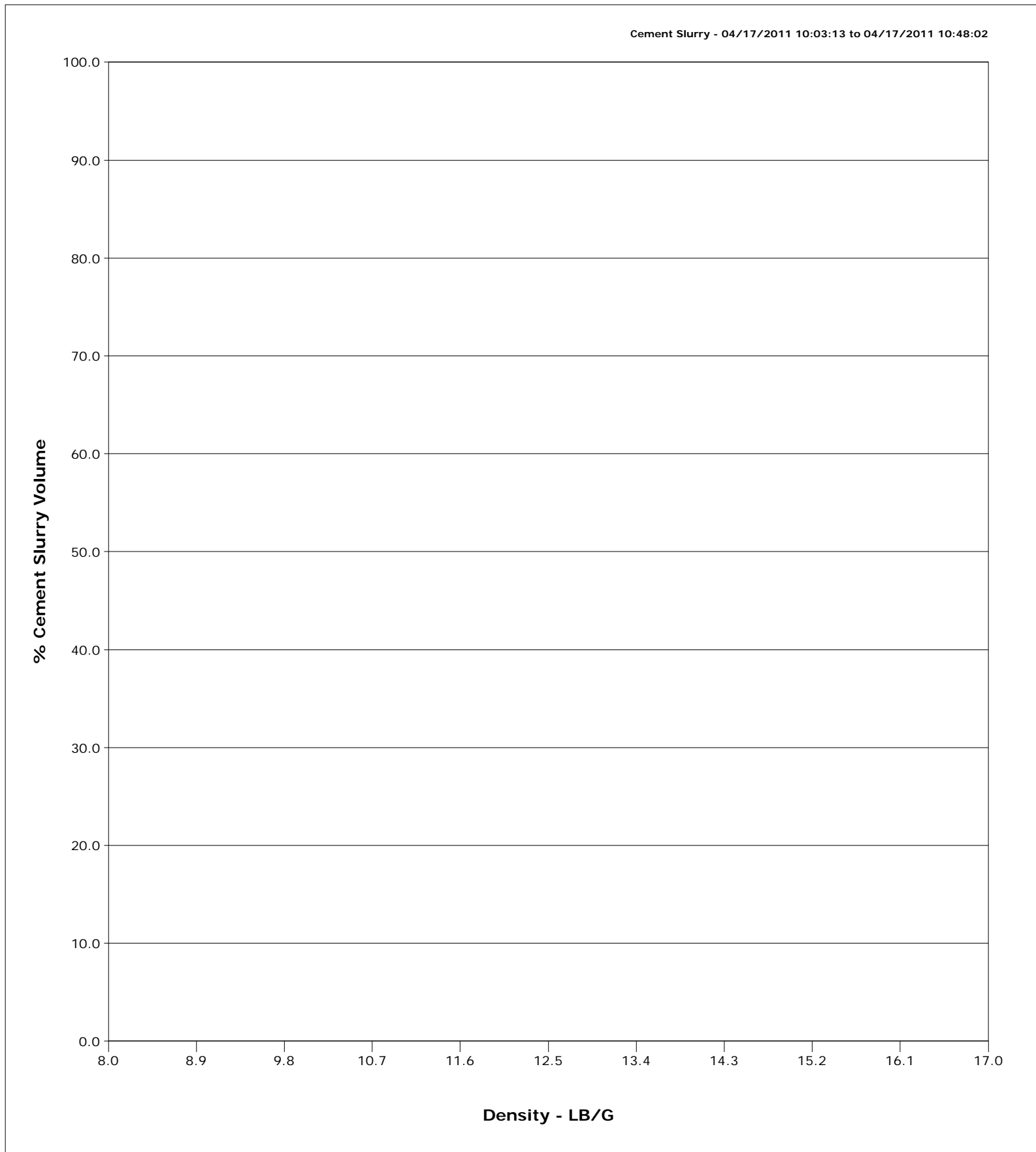


**Well** RGU 524-24-198  
**Field** Ryan Gulch  
**Engineer** Dustin C Krueger  
**Country** United States

**Client** WILLIAMS  
**SIR No.** 000515006  
**Job Type** 9 5/8 2-STAGE SURFACE @ 4,237'  
**Job Date** 04-17-2011



<b>Well</b>	RGU 524-24-198	<b>Client</b>	WILLIAMS
<b>Field</b>	Ryan Gulch	<b>SIR No.</b>	000515006
<b>Engineer</b>	Dustin C Krueger	<b>Job Type</b>	9 5/8 2-STAGE SURFACE @ 4,237'
<b>Country</b>	United States	<b>Job Date</b>	04-17-2011



# Cementing Service Report

				Customer WILLIAMS			Job Number 000515006				
Well RGU 524-24-198 RGU 524-24-198			Location (legal) RIFLE, CO			Schlumberger Location Grand Junction			Job Start Apr/17/2011		
Field Ryan Gulch		Formation Name/Type Shale		Deviation deg		Bit Size 14.0 in		Well MD 4237.0 ft		Well TVD 4237.0 ft	
County RIO BLANCO		State/Province Colorado		BHP psi		BHST 122 degF		BHCT 89 degF		Pore Press. Gradient lb/gal	
Well Master		API/UWI									
Rig Name CYCLONE 29		Drilled For Gas		Service Via Land		Casing/Liner					
						Depth, ft		Size, in		Weight, lb/ft	
										Grade	
										Thread	
Offshore Zone		Well Class New		Well Type Development		80.0		18.0		94.0	
						4237.0		9.6		36.0	
										con	
										J55	
										welded	
										8RD	
Drilling Fluid Type Bentonite		Max. Density 9.00 lb/gal		Plastic Viscosity 19.000 cP		Tubing/Drill Pipe					
						T/D		Depth, ft		Size, in	
										Weight, lb/ft	
										Grade	
										Thread	
Service Line Cementing		Job Type 9 5/8 2-STAGE SURFACE @ 4,237'									
Max. Allowed Tub. Press 1250 psi		Max. Allowed Ann. Press 3000 psi		WH Connection 9 5/8 8RD		Perforations/Open Hole					
						Top, ft		Bottom, ft		shot/ft	
										No. of Shots	
										Total Interval ft	
										Diameter in	
						Treat Down Casing		Displacement 324.0 bbl		Packer Type	
										Packer Depth ft	
						Tubing Vol. bbl		Casing Vol. 327.8 bbl		Annular Vol. 435.0 bbl	
										Openhole Vol. 616.0 bbl	
Casing/Tubing Secured <input checked="" type="checkbox"/>		1 Hole Vol. Circulated prior to Cement <input checked="" type="checkbox"/>		Casing Tools				Squeeze Job			
Lift Pressure 750 psi				Shoe Type Guide				Squeeze Type			
Pipe Rotated <input type="checkbox"/>		Pipe Reciprocated <input type="checkbox"/>		Shoe Depth 4237.0 ft				Tool Type			
No. Centralizers		Top Plugs		Bottom Plugs		Stage Tool Type DV				Tool Depth ft	
Cement Head Type Single						Stage Tool Depth 1894.0 ft				Tail Pipe Size in	
Job Scheduled For Apr/17/2011 02:00		Arrived on Location Apr/17/2011 01:00		Leave Location Apr/17/2011 21:00		Collar Type Float				Tail Pipe Depth ft	
						Collar Depth 4193.0 ft				Sqz. Total Vol. bbl	
Date	Time 24-hr clock	Treating Pressure PSI	Flow Rate B/M	Density LB/G	Volume BBL	Message					
04/17/2011	09:44:08	3	0.0	8.44	0.0	Started Acquisition					
04/17/2011	09:44:14	3	0.0	8.44	0.0	Start Job					
04/17/2011	09:44:15	3	0.0	8.44	0.0	2bbl fresh water preflush lines					
04/17/2011	09:44:34	3	0.0	8.44	0.0	Pressure Test Lines					
04/17/2011	09:44:36	3	0.0	8.44	0.0	Low 500psi test = GOOD					
04/17/2011	09:44:38	3	0.0	8.44	0.0	Pressure Test Lines					
04/17/2011	09:44:41	4	0.0	8.44	0.0	High 3000psi test = GOOD					
04/17/2011	09:44:48	3	0.0	8.44	0.0	Start Pumping Spacer					
04/17/2011	09:44:50	3	0.0	8.44	0.0	40bbl fresh water					
04/17/2011	09:44:51	3	0.0	8.44	0.0	Good Returns					
04/17/2011	09:46:38	64	2.8	8.44	2.3						
04/17/2011	09:49:08	431	0.0	8.44	2.5						
04/17/2011	09:51:38	3738	0.0	8.44	2.5						
04/17/2011	09:54:08	37	1.5	8.44	2.6						
04/17/2011	09:56:38	140	4.9	8.44	10.3						
04/17/2011	09:59:08	138	4.9	8.44	22.5						
04/17/2011	10:01:38	158	4.9	8.44	34.7						
04/17/2011	10:03:11	171	4.9	8.44	42.2	End Spacer					
04/17/2011	10:03:13	174	4.9	8.44	42.4	Start Cement Slurry					
04/17/2011	10:03:18	164	5.1	8.48	42.8	Reset Total, Vol = 42.80 bbl					
04/17/2011	10:03:43	256	4.9	12.83	44.9	End Scavenger Slurry					

Well RGU 524-24-198 RGU 524-24-198			Field Ryan Gulch		Job Start Apr/17/2011	Customer WILLIAMS		Job Number 000515006
Date	Time 24-hr clock	Treating Pressure PSI	Flow Rate B/M	Density LB/G	Volume BBL	Message		
04/17/2011	10:04:08	245	4.9	12.85	46.9			
04/17/2011	10:06:38	208	4.9	12.79	59.1			
04/17/2011	10:09:08	209	4.9	12.70	71.4			
04/17/2011	10:11:38	207	4.9	12.79	83.6			
04/17/2011	10:14:08	334	6.3	12.76	98.9			
04/17/2011	10:16:38	346	6.3	12.84	114.6			
04/17/2011	10:19:08	362	6.4	12.77	130.5			
04/17/2011	10:21:38	403	6.4	12.87	146.6			
04/17/2011	10:24:08	370	6.4	12.76	162.7			
04/17/2011	10:26:38	386	6.5	12.86	178.8			
04/17/2011	10:29:08	398	6.4	12.90	194.9			
04/17/2011	10:31:38	363	6.4	12.90	211.0			
04/17/2011	10:34:08	370	6.5	12.90	227.1			
04/17/2011	10:36:38	367	6.5	12.95	243.2			
04/17/2011	10:39:08	395	6.4	12.77	259.3			
04/17/2011	10:41:38	391	6.4	12.90	275.4			
04/17/2011	10:44:08	380	6.5	12.90	291.5			
04/17/2011	10:46:38	368	6.4	12.92	307.6			
04/17/2011	10:48:02	389	6.4	12.90	316.6	End Cement Slurry		
04/17/2011	10:48:08	403	6.4	12.90	317.2	Drop Top Plug		
04/17/2011	10:48:10	362	6.4	12.90	317.4	Start Displacement		
04/17/2011	10:48:12	361	6.4	12.90	317.6	324.4 bbl of Fresh Water		
04/17/2011	10:49:08	372	6.4	12.90	323.6			
04/17/2011	10:51:38	28	0.0	13.16	338.3			
04/17/2011	10:54:08	36	0.0	10.84	338.3			
04/17/2011	10:56:38	27	0.0	9.50	338.3			
04/17/2011	10:59:08	27	0.0	9.11	338.3			
04/17/2011	11:01:38	256	6.5	8.91	347.4			
04/17/2011	11:04:08	156	5.1	8.47	363.2			
04/17/2011	11:06:38	149	5.1	8.44	375.9			
04/17/2011	11:09:08	157	5.2	7.50	389.6			
04/17/2011	11:11:38	136	5.2	7.04	402.5			
04/17/2011	11:14:08	190	6.4	8.44	415.5			
04/17/2011	11:16:38	292	7.8	8.44	433.4			
04/17/2011	11:19:08	280	7.8	8.44	453.0			
04/17/2011	11:21:38	295	7.8	8.44	472.5			
04/17/2011	11:24:08	83	3.7	8.44	486.1			
04/17/2011	11:26:38	84	3.7	8.44	495.3			
04/17/2011	11:29:08	284	7.7	8.44	507.5			
04/17/2011	11:30:32	338	7.8	8.44	518.4	Good Returns		
04/17/2011	11:31:38	377	7.8	8.44	526.9			
04/17/2011	11:34:08	467	7.8	8.44	546.4			
04/17/2011	11:36:38	540	7.8	8.44	565.8			
04/17/2011	11:39:08	631	7.8	8.44	585.2			
04/17/2011	11:41:38	726	7.7	8.44	604.6			
04/17/2011	11:44:08	795	7.8	8.44	624.0			
04/17/2011	11:46:38	718	6.0	8.44	639.9			
04/17/2011	11:49:08	695	3.9	8.44	652.3			
04/17/2011	11:51:38	676	2.2	8.44	660.4			
04/17/2011	11:54:08	712	2.2	8.44	665.9			
04/17/2011	11:56:38	747	2.2	8.44	670.9			
04/17/2011	11:57:50	1184	0.0	8.44	672.3	Bump Top Plug		
04/17/2011	11:57:52	1180	0.0	8.44	672.3	End Displacement		
04/17/2011	11:57:54	1182	0.0	8.44	672.3	bumped to 1250psi		

Well			Field		Job Start		Customer		Job Number	
RGU 524-24-198 RGU 524-24-198			Ryan Gulch		Apr/17/2011		WILLIAMS		000515006	
Date	Time 24-hr clock	Treating Pressure PSI		Flow Rate B/M	Density LB/G		Volume BBL		Message	
04/17/2011	11:59:08	19		0.5	8.44		672.3			
04/17/2011	12:01:38	16		0.0	8.44		672.4			
04/17/2011	12:04:08	24		0.0	8.44		672.4			
04/17/2011	12:06:38	27		0.0	8.44		672.4			
04/17/2011	12:09:08	38		0.0	8.44		672.4			
04/17/2011	12:11:38	44		0.0	8.44		672.4			
04/17/2011	12:14:08	48		0.0	8.44		672.4			
04/17/2011	12:16:36	281		0.6	8.44		672.9		Dropped opening tool	
04/17/2011	12:16:38	21		0.8	8.44		672.9			
04/17/2011	12:16:42	126		0.7	8.44		673.0		Opened at 900psi	
04/17/2011	12:18:07	191		3.9	8.44		678.1		Circulated 10bbl	
04/17/2011	12:18:33	187		3.9	8.44		679.7		Turned over to rig 4 hrs	
04/17/2011	12:18:34	197		3.9	8.44		679.8		END STAGE 1	
04/17/2011	12:19:08	113		0.7	8.44		681.9			
04/17/2011	16:20:29	-3		0.0	8.43		681.9		Pre Job Safety Meeting	
04/17/2011	16:20:33	-3		0.0	8.43		681.9		2bbl Pre Flush Lines	
04/17/2011	16:20:38	-3		0.0	8.43		681.9		START STAGE 2	
04/17/2011	16:21:38	-2		0.0	8.43		681.9			
04/17/2011	16:24:08	-3		0.0	8.43		681.9			
04/17/2011	16:26:38	-4		0.0	8.43		681.9			
04/17/2011	16:29:08	-5		0.0	8.43		681.9			
04/17/2011	16:30:40	-4		0.0	8.43		681.9		Start Pumping Spacer	
04/17/2011	16:30:41	-4		0.0	8.43		681.9		40bbl Fresh Water	
04/17/2011	16:31:38	-5		0.0	8.43		681.9			
04/17/2011	16:34:08	-5		0.0	8.43		681.9			
04/17/2011	16:36:38	60		3.1	8.43		688.6			
04/17/2011	16:39:08	82		3.6	8.43		696.8			
04/17/2011	16:41:38	78		3.6	8.43		705.8			
04/17/2011	16:44:08	111		3.6	8.43		714.7			
04/17/2011	16:46:38	143		3.5	12.79		723.7			
04/17/2011	16:46:44	162		3.5	12.79		724.0		End Spacer	
04/17/2011	16:46:45	172		3.5	12.79		724.1		Start Cement Slurry	
04/17/2011	16:46:47	177		3.5	12.79		724.2		Start Mixing Scav Slurry	
04/17/2011	16:46:52	150		3.5	12.79		724.5		End Scavenger Slurry	
04/17/2011	16:46:54	172		3.5	12.80		724.6		378bbl(1240sks) of 12.8ppg	
04/17/2011	16:46:55	172		3.5	12.80		724.7		Good returns	
04/17/2011	16:49:08	131		3.5	12.86		732.5			
04/17/2011	16:51:38	95		3.5	12.87		741.2			
04/17/2011	16:54:08	115		3.5	12.80		749.8			
04/17/2011	16:56:38	165		4.5	12.82		760.8			
04/17/2011	16:59:08	169		4.6	12.81		772.1			
04/17/2011	17:01:38	188		4.5	12.78		783.5			
04/17/2011	17:04:08	193		4.5	12.78		794.9			
04/17/2011	17:06:38	192		4.5	12.78		806.2			
04/17/2011	17:09:08	189		4.5	12.78		817.5			
04/17/2011	17:11:38	204		4.5	12.78		828.8			
04/17/2011	17:14:08	197		4.5	12.78		840.2			
04/17/2011	17:16:38	200		4.5	12.78		851.5			
04/17/2011	17:19:08	192		4.5	12.78		862.8			
04/17/2011	17:21:38	193		4.5	12.76		874.1			
04/17/2011	17:24:08	208		4.5	12.77		885.2			
04/17/2011	17:26:38	190		4.5	12.77		896.5			
04/17/2011	17:29:08	205		4.5	12.77		911.3			
04/17/2011	17:31:38	191		4.5	12.78		922.5			

Well RGU 524-24-198 RGU 524-24-198			Field Ryan Gulch		Job Start Apr/17/2011		Customer WILLIAMS		Job Number 000515006	
Date	Time 24-hr clock	Treating Pressure PSI		Flow Rate B/M	Density LB/G		Volume BBL		Message	
04/17/2011	17:36:38	103		3.2	12.82		942.4			
04/17/2011	17:39:08	29		1.4	12.76		947.8			
04/17/2011	17:41:38	14		0.0	12.88		948.9			
04/17/2011	17:44:08	12		0.0	12.80		948.9			
04/17/2011	17:46:38	130		3.5	12.76		953.4			
04/17/2011	17:49:08	134		3.5	12.81		962.2			
04/17/2011	17:51:38	136		3.5	12.79		971.1			
04/17/2011	17:54:08	141		3.6	12.78		980.0			
04/17/2011	17:56:38	143		3.5	12.78		988.9			
04/17/2011	17:59:08	127		3.5	12.78		997.7			
04/17/2011	18:01:38	130		3.5	12.77		1006.6			
04/17/2011	18:04:08	138		3.6	12.78		1015.5			
04/17/2011	18:06:38	133		3.5	12.78		1024.4			
04/17/2011	18:09:08	151		3.5	12.77		1033.2			
04/17/2011	18:11:38	142		3.5	12.77		1042.1			
04/17/2011	18:14:08	136		3.5	12.77		1051.0			
04/17/2011	18:16:38	141		3.6	12.74		1059.9			
04/17/2011	18:19:08	236		5.0	12.77		1071.6			
04/17/2011	18:21:38	226		5.0	12.84		1084.1			
04/17/2011	18:24:08	149		3.3	12.91		1093.8			
04/17/2011	18:26:38	163		3.4	12.77		1102.3			
04/17/2011	18:29:08	123		3.4	12.92		1110.7			
04/17/2011	18:31:38	254		4.9	12.94		1122.2			
04/17/2011	18:32:32	153		4.9	12.95		1126.6		End Cement Slurry	
04/17/2011	18:32:40	22		0.7	13.10		1127.0		Start Displacement	
04/17/2011	18:32:42	21		0.2	13.14		1127.0		146.4 bbl fresh water	
04/17/2011	18:34:08	10		0.0	12.96		1127.0			
04/17/2011	18:36:38	212		4.9	9.19		1133.8			
04/17/2011	18:39:08	150		4.5	8.57		1146.1			
04/17/2011	18:41:38	271		4.7	8.47		1157.9			
04/17/2011	18:44:08	174		4.5	8.44		1169.2			
04/17/2011	18:46:38	349		6.2	8.44		1182.2			
04/17/2011	18:49:08	387		6.2	8.44		1197.7			
04/17/2011	18:51:38	423		6.2	8.44		1213.2			
04/17/2011	18:54:08	459		6.2	8.44		1228.7			
04/17/2011	18:56:38	521		6.2	8.43		1244.2			
04/17/2011	18:59:08	438		3.9	8.43		1258.2			
04/17/2011	19:01:38	421		2.3	8.43		1267.7			
04/17/2011	19:04:08	1464		1.2	8.44		1273.2			
04/17/2011	19:06:16	1433		0.0	8.44		1273.2		Bumped closing plug	
04/17/2011	19:06:33	1433		0.0	8.44		1273.2		End Displacement	
04/17/2011	19:06:34	1433		0.0	8.44		1273.2		Hold for 5 min 1.5 bbl back	
04/17/2011	19:06:38	1433		0.0	8.44		1273.2			
04/17/2011	19:09:08	3		0.0	8.44		1273.2			
04/17/2011	19:11:38	1		0.0	8.44		1273.2			
04/17/2011	19:14:08	-0		0.0	8.44		1273.2			

<b>Well</b> RGU 524-24-198 RGU 524-24-198	<b>Field</b> Ryan Gulch	<b>Job Start</b> Apr/17/2011	<b>Customer</b> WILLIAMS	<b>Job Number</b> 000515006
--	----------------------------	---------------------------------	-----------------------------	--------------------------------

Post Job Summary

Average Pump Rates, bbl/min					Volume of Fluid Injected, bbl						
Slurry 4.8	N2		Mud 0.0	Maximum Rate 217.4	Total Slurry 1273.2	Mud 0.0		Spacer 42.4	N2 0		
Treating Pressure Summary, psi					Breakdown Fluid						
Maximum 3000	Final -1	Average 257	Bump Plug to 1250	Breakdown 400	Type FreshWater		Volume 1192.0 bbl		Density 8.34 lb/gal		
Avg. N2 Percent %		Designed Slurry Volume 0.0 bbl		Displacement 501.3 bbl		Mix Water Temp 68 degF		Cement Circulated to Surface?	<input type="checkbox"/>	Volume bbl	
								Washed Thru Perfs		<input type="checkbox"/>	To ft
Customer or Authorized Representative Andrew Brunk				Schlumberger Supervisor Dustin C Krueger				Circulation Lost	<input checked="" type="checkbox"/>	Job Completed	<input checked="" type="checkbox"/>
								-			-