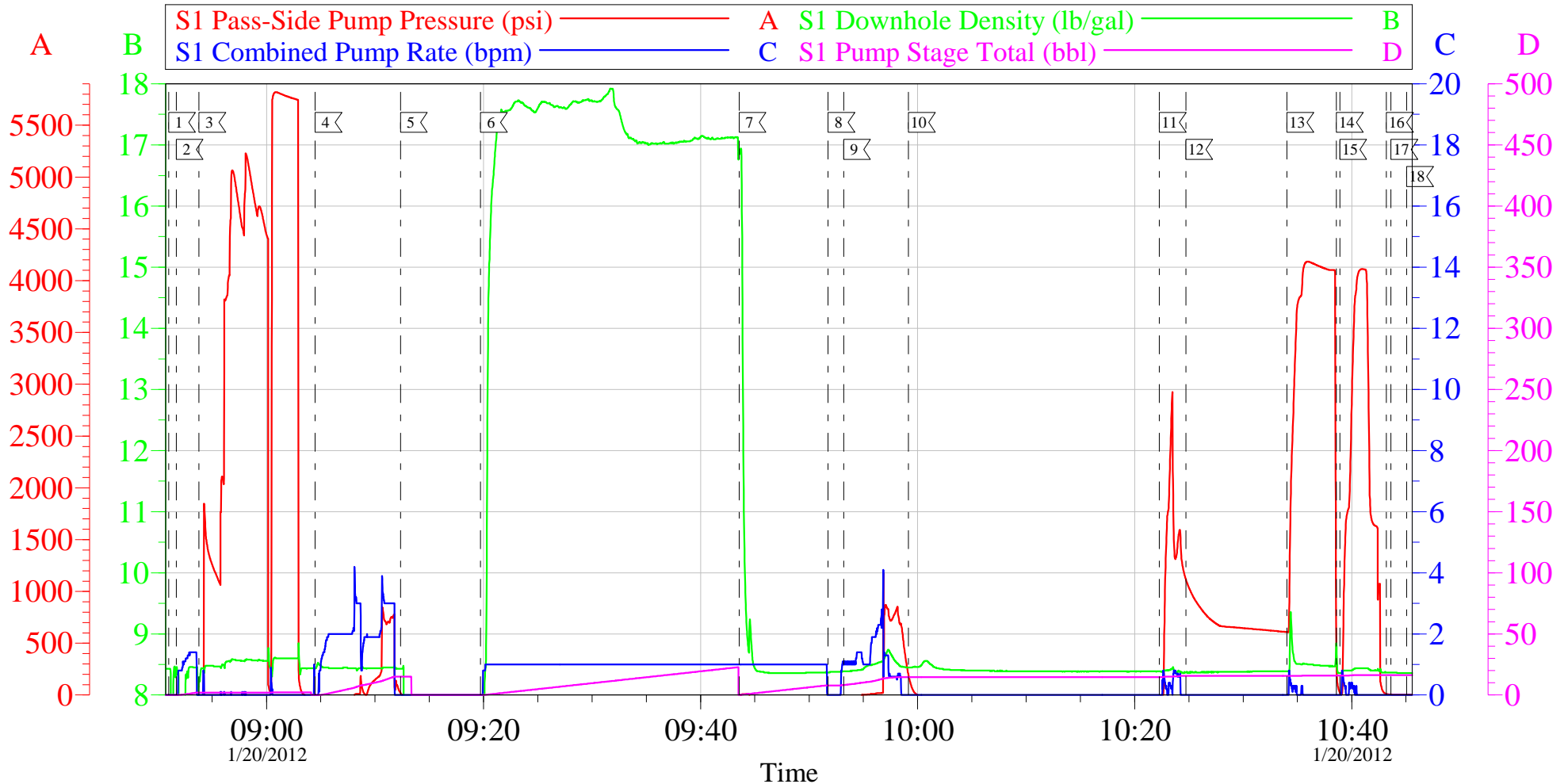


# WILLIAMS PRODUCTION PA 13-6

## SQUEEZE PERFS



Local Event Log								
1	START JOB	08:50:59	2	FILL LINES	08:51:41	3	TEST LINES	08:53:47
4	PUMP INJECTION TEST	09:04:28	5	ESTABLISH ISIP	09:12:21	6	PUMP TAIL CEMENT	09:19:43
7	PUMP DISPLACEMENT	09:43:33	8	SHUTDOWN	09:51:45	9	SQUEEZE CEMENT	09:53:11
10	SHUTDOWN	09:59:09	11	SQUEEZE CEMENT	10:22:17	12	SHUTDOWN	10:24:43
13	PRESSURE UP	10:34:02	14	RELEASE PRESSURE	10:38:35	15	PRESSURE UP	10:38:55
16	RIG PULL OUT OF PACKER	10:43:12	17	RIG REVERSE OUT	10:43:37	18	END JOB	10:45:04

Customer:	WILLIAMS PRODUCTION	Job Date:	20-Jan-2012	Sales Order #:	9215194
Well Description:	PA 13-6	Job Type:	SQUEEZE PERFS	ADC Used:	YES
Company Rep:	BRIAN DUNNICK	Cement Supervisor:	DUSTIN SMITH	Elite #:	7 REGGIE MILLER

OptiCem v6.4.10  
20-Jan-12 10:57