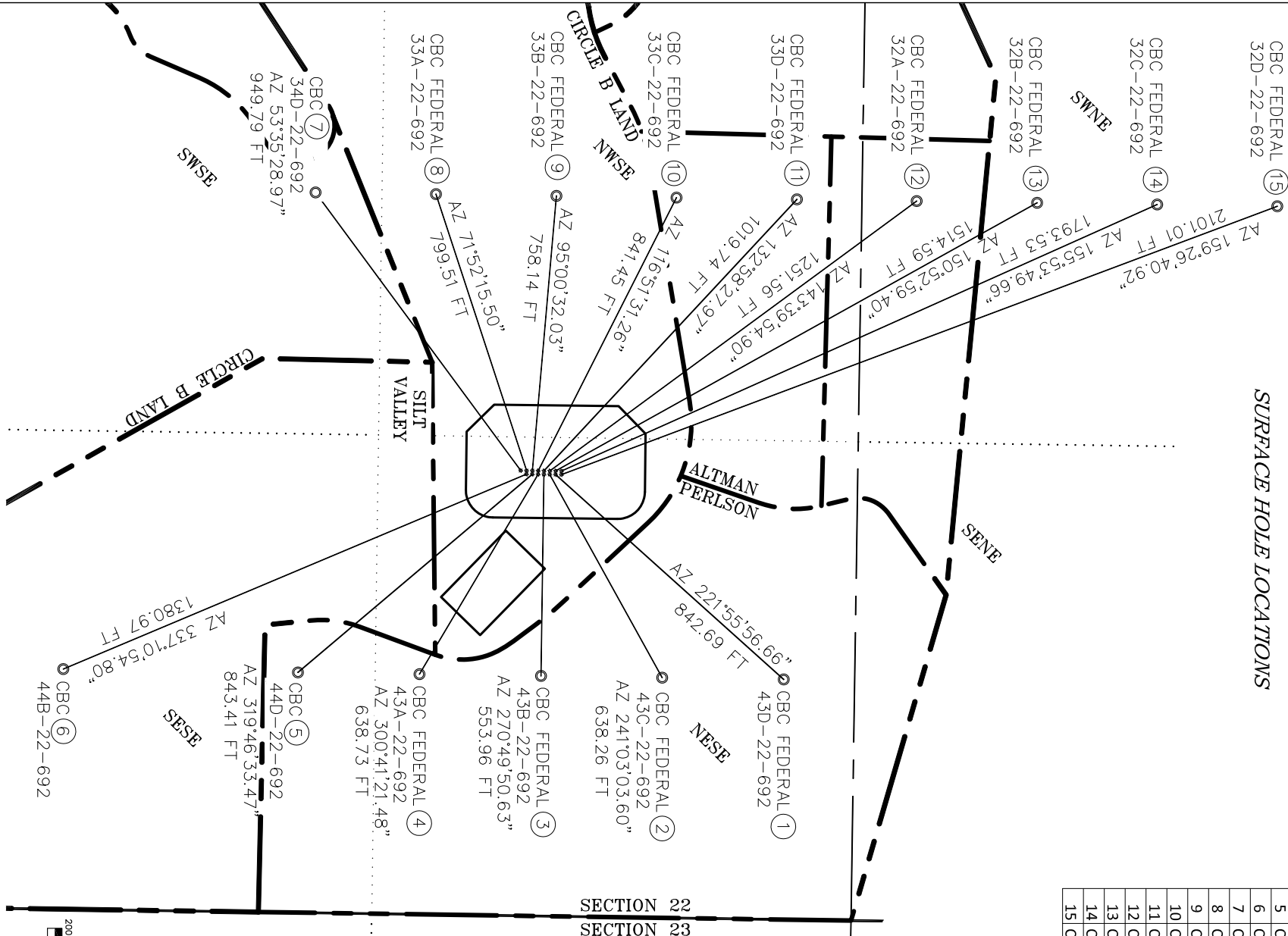


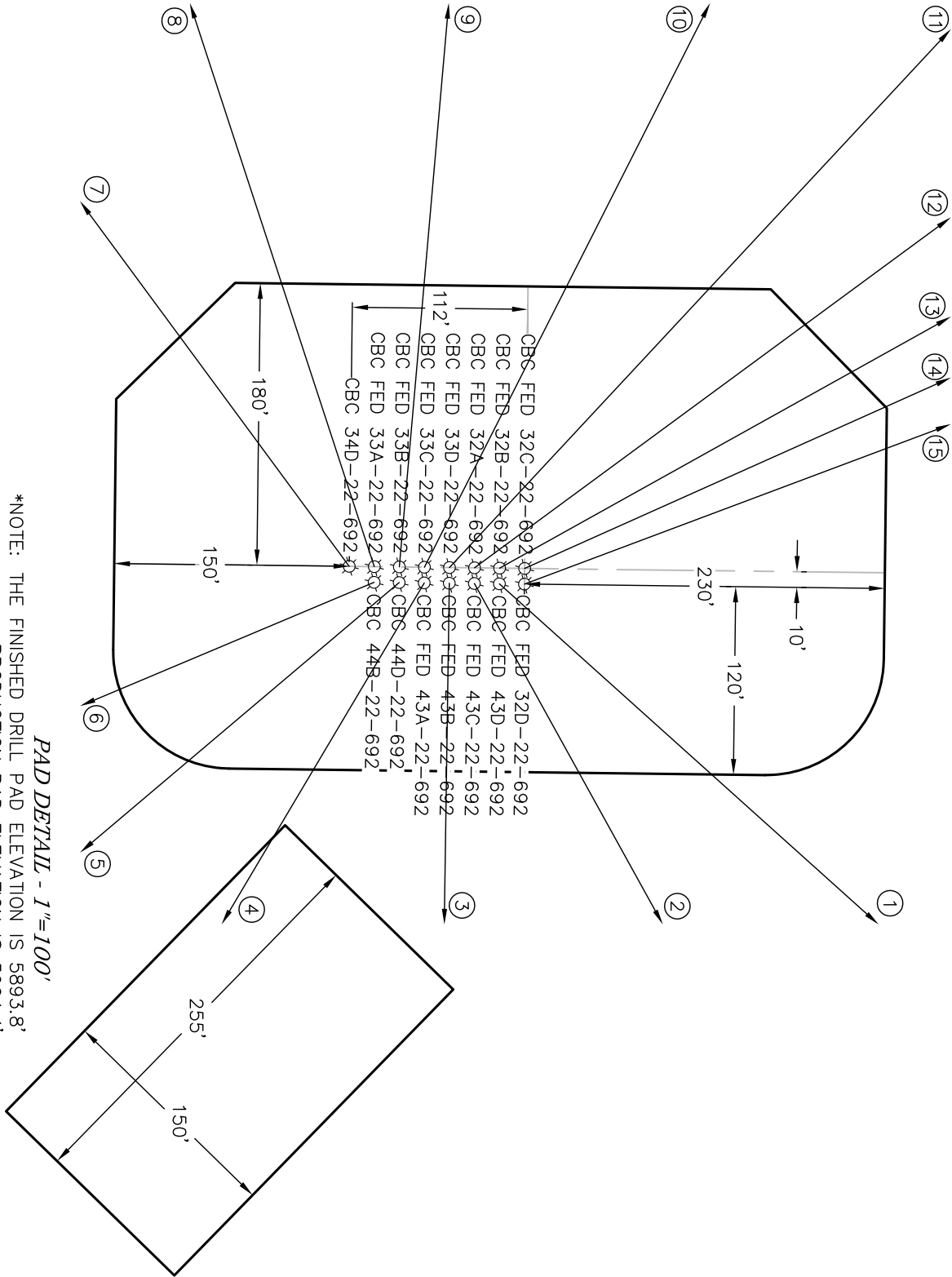
WELL INTERFERENCE EXHIBIT

CBC PAD #2

NAD 83 COLORADO CENTRAL ZONE
SURFACE HOLE LOCATIONS

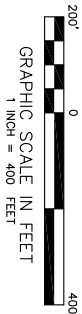



SURFACE HOLE LOCATIONS							BOTTOM HOLE LOCATIONS						
WELL NAME	FSL	FEL	NORTHING	EASTING	LATITUDE	LONGITUDE	FSL	FEL	NORTHING	EASTING	LATITUDE	LONGITUDE	
1 CBC FEDERAL 43D-22-692	1807	1214	1617926.3	2394025.6	39.510318	-107.647956	2441	660	1618553.2	2394588.8	39.512076	-107.646013	
2 CBC FEDERAL 43C-22-692	1791	1214	1617910.3	2394025.5	39.510275	-107.647955	2107	660	1618219.2	2394584.0	39.511159	-107.646002	
3 CBC FEDERAL 43B-22-692	1775	1214	1617894.3	2394025.3	39.510231	-107.647954	1774	660	1617886.3	2394579.2	39.510244	-107.645991	
4 CBC FEDERAL 43A-22-692	1759	1214	1617878.3	2394025.1	39.510187	-107.647954	1440	660	1617552.3	2394574.3	39.509328	-107.645980	
5 CBC 44D-22-692	1743	1214	1617862.3	2394024.9	39.510143	-107.647953	1106	660	1617218.3	2394569.5	39.508411	-107.645969	
6 CBC 44B-22-692	1727	1214	1617846.3	2394024.7	39.510099	-107.647953	461	660	1616573.4	2394560.2	39.506640	-107.645948	
7 CBC 34D-22-692	1711	1224	1617830.4	2394014.5	39.510055	-107.647987	1137	1980	1617266.7	2393250.1	39.508458	-107.650649	
8 CBC FEDERAL 33A-22-692	1727	1224	1617846.4	2394014.7	39.510098	-107.647988	1468	1980	1617597.6	2393254.9	39.509366	-107.650659	
9 CBC FEDERAL 33B-22-692	1743	1224	1617862.4	2394014.9	39.510142	-107.647989	1799	1980	1617928.6	2393259.6	39.510275	-107.650670	
10 CBC FEDERAL 33C-22-692	1759	1224	1617878.4	2394015.1	39.510186	-107.647989	2129	1980	1618258.6	2393264.4	39.511181	-107.650681	
11 CBC FEDERAL 33D-22-692	1775	1224	1617894.4	2394015.3	39.510230	-107.647990	2460	1980	1618589.6	2393269.2	39.512090	-107.650692	
12 CBC FEDERAL 32A-22-692	1791	1224	1617910.4	2394015.5	39.510274	-107.647991	2489-N	1980	1618918.6	2393273.9	39.512993	-107.650703	
13 CBC FEDERAL 32B-22-692	1807	1224	1617926.4	2394015.6	39.510318	-107.647991	2158-N	1980	1619249.6	2393278.7	39.513902	-107.650714	
14 CBC FEDERAL 32C-22-692	1823	1224	1617942.4	2394015.8	39.510362	-107.647992	1828-N	1980	1619579.6	2393283.4	39.514808	-107.650724	
15 CBC FEDERAL 32D-22-692	1823	1214	1617942.3	2394025.8	39.510362	-107.647956	1498-N	1980	1619909.5	2393288.1	39.515714	-107.650735	



*NOTE: THE FINISHED DRILL PAD ELEVATION IS 5893.8'
PRODUCTION PAD ELEVATION IS 5904.4'

PAD DETAIL - 1"=100'





ECLIPSE

surveying

111 E. THIRD ST., SUITE 208 RIFLE, CO 81650

(970) 625-3048

REV. DATE: 1/31/12


SCALE: 1" = 400'

DATE: 04/23/10

SHEET: 1 OF 1

PROJECT: CBC2

DFT: TAB

Bill Barrett Corporation

NE1/4SE1/4, SECTION 22

T. 6 S., R. 92 W. of the 6th. P.M.

GARFIELD COUNTY, COLORADO